

Appendix B

Consultation material

Hillston Sun Farm



Overland Sun Farming

Summary of consultation record and outcomes

Table 1 Consultation record and outcomes – regulators and industry stakeholders

Stakeholder	Method of engagement	Date	Purpose	Outcome/comment
CSC	Presentation	07/07/2016	General project briefing	Presentation to CSC to identify OVERLAND's intentions to seek approval for a large-scale solar PV generation facility within the Carrathool Shire LGA.
	Letter	12/01/2017	General project briefing	Letter to provide an introduction to the project, contact details and request opportunity to meet if required, to discuss the project and relevant matters
	Information session	03/05/2017	General project briefing	Seven attendees registered attendance at the community information session for the project while a number of others attended without registering. The session was held at the Ex-Servicemen's and Citizens Club.
	Phone call and email correspondence	25/05/2017 26/05/2017	Impacts to the Hillston aerodrome	A phone conversation and email correspondence between OVERLAND and Rowan Johnson (Town Overseer, CSC) to discuss potential impacts of the project on flights to and from the Hillston aerodrome. Rowan confirmed that due to the distance between the aerodrome and the project, it is unlikely that the project will have an impact on aircraft landing at the aerodrome.
	Phone call and letter	22/06/2017 29/06/2017	Access to paper road	A phone conversation between OVERLAND and a representative from CSC to discuss the potential impacts of the project on the paper road between the northern boundary of the site and the Hillston Substation. A letter was provided by CSC, granting consent for vehicular access from Kidman Way across the paper roads to the site of the Hillston Sun Farm and to the Hillston Substation. The letter also grants consent for the erection of the overhead transmission line above the paper roads to connect the project to the Hillston Substation.
	Phone calls and email correspondence	Ongoing	General update	Ongoing updates regarding the project status.
DPE-DRE	Letter	12/01/2017	General project briefing	Letter to provide an introduction to the project, contact details and request opportunity to meet if required, to discuss the project and relevant matters.
RMS	Letter	12/01/2017	General project briefing	Letter to provide an introduction to the project, contact details and request opportunity to meet if required, to discuss the project and relevant matters.
	Meeting	31/01/2017	Consider options available for site access	Provided an introduction to the project and discussed site access options for the project. Officer provided advice regarding the proposed site access locations off Kidman Way.
	Phone calls and email correspondence	02/02/2017 08/02/2017	Clarify requirements for site access options raised during meeting and site screening requirements and recommendations	RMS officer confirmed that if appropriate site distance lines were adhered to then there should not be any issues with access from Kidman Way.
		03/04/2017 23/05/2017		
OEH	Letter	12/01/2017	General project briefing	Letter to provide an introduction to the project, contact details and request opportunity to meet if required, to discuss the project and relevant matters.

Table 1 Consultation record and outcomes – regulators and industry stakeholders

Stakeholder	Method of engagement	Date	Purpose	Outcome/comment
	Phone calls and email correspondence	26/04/2017	General update	Phone call to update on project progress.
EPA	Letter and follow-up phone/email correspondence	12/01/2017	General project briefing	Letter to provide an introduction to the project, contact details and request opportunity to meet if required, to discuss the project and relevant matters. Follow-up phone correspondence with EPA officer confirmed that EPA did not have any specific matters to raise in relation to the project at this time, and the EPA did not see the need for a meeting at this time.
DPI	Letter	12/01/2017	General project briefing	Letter to provide an introduction to the project, contact details and request opportunity to meet if required, to discuss the project and relevant matters.
CASA	Phone call	10/02/2017	General project briefing	Confirmed that consultation is recommended.
	Phone call and email correspondence	11/05/2017	Potential impacts on air traffic and Hillston Airport	Email and phone call to provide an introduction to the project. The outcomes of discussions confirmed that: <ul style="list-style-type: none"> Hillston Sun Farm is not runway aligned and is therefore unlikely to present a hazard to aircraft operations; Hillston Airport is not certified or registered and CASA has no oversight of operations at this location; CASA recommended that discussion with local users take place to gauge the potential impact on aircraft operations; and there have not been any reports of glare or safety issues or concerns raised by pilots in relation to solar farm developments in Australia.
		17/05/2017		
		24/05/2017		
Essential Energy	Meetings, phone calls, email correspondence and letter	Ongoing	Grid connection	A letter was provided by Essential Energy to OVERLAND (dated 29 June 2017) acknowledging that a connection enquiry has been submitted and noting that OVERLAND have entered into a Connection Services Investigation Agreement with Essential Energy.
RFS	Phone call	18/05/2017	General project briefing	Phone call to Deborah Dawson (Development Assessment and Planning Officer) to provide an introduction to the project. Deborah confirmed that there were no issues for the Hillston Sun Farm at this stage in the assessment process.

Table 2 Consultation records and outcomes – adjoining landholders

Stakeholder	Method of engagement	Date	Purpose	Outcome/comment
Owner of residence R17 to the west of the site	Phone call	26/04/2017	General project briefing	Phone call to provide contact details and discuss project details.
	Meeting	03/05/2017	Assessment of visual impacts	Photographs taken from the residence at R17 to enable assessment of visual impacts.
	Phone call	05/05/2017	General update	General project discussion.
	Phone call	19/06/2017	General update	Discussion of visual impacts and landscaping to minimise views of the project infrastructure.

Essential Energy consultation



Our Ref: fC112433

29 June 2017

Shane Brosnan
Connections Manager
OVERLAND Sun Farming
PO Box 318
Wellers Hill QLD 4121

Dear Shane

Hillston Sun Farm

This is to confirm that Overland Sun Farming Pty Ltd ("the proponent") has submitted a connection enquiry to Essential Energy, as required under the National Electricity Rules and is progressing in the connection process.

Subsequently the proponent entered into a Connection Services Investigation Agreement (CISA) with Essential Energy. A CISA is taken by Essential Energy to be good indicator of a project's commitment to connection.

Yours Sincerely,

A handwritten signature in dark ink, appearing to read "D. Elliott", written in a cursive style.

Darren Elliott
Major Connections Manager
Network Connections
Essential Energy

Government and regulatory agencies consultation

9 January 2017

Ground Floor, Suite 01, 20 Chandos Street
St Leonards, NSW, 2065
PO Box 21
St Leonards, NSW, 1590

Mitchell Isaacs
Director, Planning Policy & Assessment Advice
Department of Primary Industries

T +61 2 9493 9500
F +61 2 9493 9599
E info@emmconsulting.com.au
www.emmconsulting.com.au

Re: State Significant Development applications – Hillston Sun Farm; Limondale Sun Farm; and Hay Sun Farm. Your ref: OUT16/37921; 16/40839; and 16/49632

Dear Mitchell,

We are writing to you on behalf of OVERLAND Sun Farming Company Pty Ltd (OVERLAND) in relation to three photovoltaic (PV) solar developments proposed by OVERLAND in south-western NSW.

OVERLAND's personnel have successfully led benchmark renewable energy and infrastructure projects from start to finish and have a sound record that traverses early stage site identification, working with landowners and communities, obtaining consents and licences from government to build and operate, securing energy and grid connection contracts, arranging financing and managing construction and ongoing operations and power generation.

This experience includes responsibility for the development, financing, construction and operation of over 320 MW of renewable energy generation projects including the delivery of approximately 50 MW of renewable energy generation in NSW.

Each of the three proposals are State Significant Development (SSD) under the *Environmental Planning and Assessment Act 1979*. OVERLAND will be supported by EMM Consulting Pty Limited (EMM) in the preparation of the environmental impact statements (EISs) to support the applications for each of the proposals. The proposals include:

- Hillston Sun Farm (SSD 7955), on Kidman Way, Hillston within the Carrathool local government area (LGA);
- Limondale Sun Farm (SSD 8025), on Yanga Way, Balranald within the Balranald and Murray River LGAs; and
- Hay Sun Farm (SSD 8113), on Sidonia Road, Hay within the Hay LGA.

We acknowledge your responses to the Department of Planning and Environment (DP&E) dated 12 October 2016 (SSD 7955), 3 November 2016 (SSD 8025) and 16 December 2016 (SSD 8113), providing details of assessment requirements for these proposals as part of the Secretary's Environmental Assessment Requirements (SEARs). The matters raised within your responses were primarily in relation to biodiversity, land and water. We have reviewed these letters and their attachments and will give consideration to the matters raised during the preparation of the EISs for these proposals. We have attached a copy of the SEARs for these proposals for your reference.

We would welcome the opportunity to meet with you at your office in Sydney to discuss these proposals. Should you have any questions or if you would be available to meet for a more detailed briefing, please do not hesitate to contact John Zammit at OVERLAND Sun Farming Company in the first instance.

John Zammit
Development Manager, OVERLAND
john.zammit@overlandsunfarming.com.au
M: 0433 293 427

Kate Cox
Associate Environmental Scientist, EMM Consulting
kcox@emmconsulting.com.au
M: 0402 259 892 or P: 02 9493 9500

Yours sincerely

A handwritten signature in black ink, appearing to read 'John Zammit', with a stylized flourish at the end.

John Zammit
Development Manager
OVERLAND Sun Farming Company

A handwritten signature in black ink, appearing to read 'Kate Cox', with a stylized flourish at the end.

Kate Cox
Associate Environmental Scientist
EMM Consulting

9 January 2017

Ground Floor, Suite 01, 20 Chandos Street
St Leonards, NSW, 2065
PO Box 21
St Leonards, NSW, 1590

Steve Cozens
Senior Project Officer, Royalty & Advisory Services
Department of Industry – Division of Resources and Energy

T +61 2 9493 9500
F +61 2 9493 9599
E info@emmconsulting.com.au
www.emmconsulting.com.au

Re: State Significant Development applications – Hillston Sun Farm; Limondale Sun Farm; and Hay Sun Farm. Your ref: OUT16/37529; and 16/49077

Dear Steve,

We are writing to you on behalf of OVERLAND Sun Farming Company Pty Ltd (OVERLAND) in relation to three photovoltaic (PV) solar developments proposed by OVERLAND in south-western NSW.

OVERLAND's personnel have successfully led benchmark renewable energy and infrastructure projects from start to finish and have a sound record that traverses early stage site identification, working with landowners and communities, obtaining consents and licences from government to build and operate, securing energy and grid connection contracts, arranging financing and managing construction and ongoing operations and power generation.

This experience includes responsibility for the development, financing, construction and operation of over 320 MW of renewable energy generation projects including the delivery of approximately 50 MW of renewable energy generation in NSW.

Each of the three proposals are State Significant Development (SSD) under the *Environmental Planning and Assessment Act 1979*. OVERLAND will be supported by EMM Consulting Pty Limited (EMM) in the preparation of the environmental impact statements (EISs) to support the applications for each of the proposals. The proposals include:

- Hillston Sun Farm (SSD 7955), on Kidman Way, Hillston within the Carrathool local government area (LGA);
- Limondale Sun Farm (SSD 8025), on Yanga Way, Balranald within the Balranald and Murray River LGAs; and
- Hay Sun Farm (SSD 8113), on Sidonia Road, Hay within the Hay LGA.

We acknowledge your response to the Department of Planning and Environment (DP&E) (SSD 8113) noting that Hydes Pit is located within the proposed development area. We have reviewed this letter and will give consideration to the matters raised during the preparation of the EIS for this proposal.

We also acknowledge your response to DP&E dated 11 October 2016 (SSD 7955) noting that the Department of Industry (DoI) – Division of Resources and Energy (DRE) has no specific recommendations or requirements as part of the Secretary's Environmental Assessment Requirements (SEARs) for this proposal.

We note that no response to DP&E was received for the Limondale Sun Farm (SSD 8025) proposal.

We have attached a copy of the SEARs for each of the proposals for your reference.

We would welcome the opportunity to meet with you at your office in Maitland to discuss these proposals. Should you have any questions or if you would be available to meet for a more detailed briefing, please do not hesitate to contact John Zammit at OVERLAND Sun Farming Company in the first instance.

John Zammit
Development Manager, OVERLAND
john.zammit@overlandsunfarming.com.au
M: 0433 293 427

Kate Cox
Associate Environmental Scientist, EMM Consulting
kcox@emmconsulting.com.au
M: 0402 259 892 or P: 02 9493 9500

Yours sincerely



John Zammit
Development Manager
OVERLAND Sun Farming Company



Kate Cox
Associate Environmental Scientist
EMM Consulting

9 January 2017

Ground Floor, Suite 01, 20 Chandos Street
St Leonards, NSW, 2065
PO Box 21
St Leonards, NSW, 1590

Stephanie Todd
Operations Officer, South West – Griffith
Environment Protection Authority

T +61 2 9493 9500
F +61 2 9493 9599
E info@emmconsulting.com.au
www.emmconsulting.com.au

Re: State Significant Development applications – Hillston Sun Farm; Limondale Sun Farm; and Hay Sun Farm. Your ref: EF13/5561; and DOC16/614622-01

Dear Stephanie,

We are writing to you on behalf of OVERLAND Sun Farming Company Pty Ltd (OVERLAND) in relation to three photovoltaic (PV) solar developments proposed by OVERLAND in south-western NSW.

OVERLAND's personnel have successfully led benchmark renewable energy and infrastructure projects from start to finish and have a sound record that traverses early stage site identification, working with landowners and communities, obtaining consents and licences from government to build and operate, securing energy and grid connection contracts, arranging financing and managing construction and ongoing operations and power generation.

This experience includes responsibility for the development, financing, construction and operation of over 320 MW of renewable energy generation projects including the delivery of approximately 50 MW of renewable energy generation in NSW.

Each of the three proposals are State Significant Development (SSD) under the *Environmental Planning and Assessment Act 1979*. OVERLAND will be supported by EMM Consulting Pty Limited (EMM) in the preparation of the environmental impact statements (EISs) to support the applications for each of the proposals. The proposals include:

- Hillston Sun Farm (SSD 7955), on Kidman Way, Hillston within the Carrathool local government area (LGA);
- Limondale Sun Farm (SSD 8025), on Yanga Way, Balranald within the Balranald and Murray River LGAs; and
- Hay Sun Farm (SSD 8113), on Sidonia Road, Hay within the Hay LGA.

The Department of Planning and Environment (DP&E) has issued Secretary's Environmental Assessment Requirements (SEARs) for the Hillston Sun Farm (SSD 7955), the Limondale Sun Farm (SSD 8025) and the Hay Sun Farm (SSD 8113). We acknowledge your response to DP&E dated 8 December 2016 (SSD 8113) noting that the Environment Protection Authority (EPA) has reviewed the draft SEARs and has no further considerations to include about this proposal. We also note that the EPA did not provide additional assessment requirements to DP&E to inform the SEARs for both the Hillston Sun Farm (SSD 7955) and the Limondale Sun Farm (SSD 8025). We have attached a copy of the SEARs for each of the proposals for your reference.

We would welcome the opportunity to meet with you at your office in Griffith to discuss these proposals. Should you have any questions or if you would be available to meet for a more detailed briefing, please do not hesitate to contact OVERLAND Sun Farming Company in the first instance.

John Zammit
Development Manager, OVERLAND
john.zammit@overlandsunfarming.com.au
M: 0433 293 427

Kate Cox
Associate Environmental Scientist, EMM Consulting
kcox@emmconsulting.com.au
M: 0402 259 892 or P: 02 9493 9500

Yours sincerely

A handwritten signature in black ink, appearing to read 'John Zammit', with a long horizontal flourish extending to the right.

John Zammit
Development Manager
OVERLAND Sun Farming Company

A handwritten signature in black ink, appearing to read 'Kate Cox', with a long horizontal flourish extending to the right.

Kate Cox
Associate Environmental Scientist
EMM Consulting

9 January 2017

Ground Floor, Suite 01, 20 Chandos Street
St Leonards, NSW, 2065
PO Box 21
St Leonards, NSW, 1590

Silvana Keating
Team Leader, Native Vegetation
Local Land Services Western Region

T +61 2 9493 9500
F +61 2 9493 9599
E info@emmconsulting.com.au
www.emmconsulting.com.au

Re: State Significant Development applications – Hillston Sun Farm; Limondale Sun Farm; and Hay Sun Farm. Your ref: VF16/4184; and VF16/4401

Dear Silvana,

We are writing to you on behalf of OVERLAND Sun Farming Company Pty Ltd (OVERLAND) in relation to three photovoltaic (PV) solar developments proposed by OVERLAND in south-western NSW.

OVERLAND's personnel have successfully led benchmark renewable energy and infrastructure projects from start to finish and have a sound record that traverses early stage site identification, working with landowners and communities, obtaining consents and licences from government to build and operate, securing energy and grid connection contracts, arranging financing and managing construction and ongoing operations and power generation.

This experience includes responsibility for the development, financing, construction and operation of over 320 MW of renewable energy generation projects including the delivery of approximately 50 MW of renewable energy generation in NSW.

Each of the three proposals are State Significant Development (SSD) under the *Environmental Planning and Assessment Act 1979*. OVERLAND will be supported by EMM Consulting Pty Limited (EMM) in the preparation of the environmental impact statements (EISs) to support the applications for each of the proposals. The proposals include:

- Hillston Sun Farm (SSD 7955), on Kidman Way, Hillston within the Carrathool local government area (LGA);
- Limondale Sun Farm (SSD 8025), on Yanga Way, Balranald within the Balranald and Murray River LGAs; and
- Hay Sun Farm (SSD 8113), on Sidonia Road, Hay within the Hay LGA.

We acknowledge your responses to the Department of Planning and Environment (DP&E) dated 15 October 2016 (SSD 7955) and 3 November 2016 (SSD 8025), providing details of assessment requirements for these proposals as part of the Secretary's Environmental Assessment Requirements (SEARs). The matters raised within your responses were primarily in relation to: Local Land Services' strategic plans and activities; native vegetation; soil and land capability; biosecurity; Crown Land; and Aboriginal cultural heritage. We have reviewed these letters and their attachments and will give consideration to the matters raised during the preparation of the EISs for these proposals.

We note that no response to DP&E was received for the Hay Sun Farm (SSD 8113) proposal.

We have attached a copy of the SEARs for each of the proposals for your reference.

We would welcome the opportunity to meet with you at your office in Buronga to discuss these proposals. Should you have any questions or if you would be available to meet for a more detailed briefing, please do not hesitate to contact John Zammit at OVERLAND Sun Farming Company in the first instance.

John Zammit
Development Manager, OVERLAND
john.zammit@overlandsunfarming.com.au
M: 0433 293 427

Kate Cox
Associate Environmental Scientist, EMM Consulting
kcox@emmconsulting.com.au
M: 0402 259 892 or P: 02 9493 9500

Yours sincerely



John Zammit
Development Manager
OVERLAND Sun Farming Company



Kate Cox
Associate Environmental Scientist
EMM Consulting

9 January 2017

Ground Floor, Suite 01, 20 Chandos Street
St Leonards, NSW, 2065
PO Box 21
St Leonards, NSW, 1590

Miranda Kerr
Regional Biodiversity Conservation Officer
Office of Environment and Heritage

T +61 2 9493 9500
F +61 2 9493 9599
E info@emmconsulting.com.au
www.emmconsulting.com.au

Re: State Significant Development applications – Hillston Sun Farm; and Limondale Sun Farm. Your ref: DOC16/492937; and 16/534380

Dear Miranda,

We are writing to you on behalf of OVERLAND Sun Farming Company Pty Ltd (OVERLAND) in relation to two photovoltaic (PV) solar developments proposed by OVERLAND in south-western NSW.

OVERLAND's personnel have successfully led benchmark renewable energy and infrastructure projects from start to finish and have a sound record that traverses early stage site identification, working with landowners and communities, obtaining consents and licences from government to build and operate, securing energy and grid connection contracts, arranging financing and managing construction and ongoing operations and power generation.

This experience includes responsibility for the development, financing, construction and operation of over 320 MW of renewable energy generation projects including the delivery of approximately 50 MW of renewable energy generation in NSW.

Both of the proposals are State Significant Development (SSD) under the *Environmental Planning and Assessment Act 1979*. OVERLAND will be supported by EMM Consulting Pty Limited (EMM) in the preparation of the environmental impact statements (EISs) to support the applications for both of the proposals. The proposals include:

- Hillston Sun Farm (SSD 7955), on Kidman Way, Hillston within the Carrathool local government area (LGA); and
- Limondale Sun Farm (SSD 8025), on Yanga Way, Balranald within the Balranald and Murray River LGAs.

We acknowledge your responses to the Department of Planning and Environment (DP&E) dated 12 October 2016 (SSD 7955) and 3 November 2016 (SSD 8025), providing details of assessment requirements for these proposals as part of the Secretary's Environmental Assessment Requirements (SEARs). The matters raised within your responses were primarily in relation to: biodiversity and offsetting; Aboriginal cultural and historic heritage; water and soils; flooding; and cumulative impacts. We have reviewed these letters and their attachments and will give consideration to the matters raised during the preparation of the EISs for these proposals. We have attached a copy of the SEARs for each of these proposals for your reference.

We would welcome the opportunity to meet with you at your office in Albury to discuss these proposals. Should you have any questions or if you would be available to meet for a more detailed briefing, please do not hesitate to contact John Zammit at OVERLAND Sun Farming Company in the first instance.

John Zammit
Development Manager, OVERLAND
john.zammit@overlandsunfarming.com.au
M: 0433 293 427

Kate Cox
Associate Environmental Scientist, EMM Consulting
kcox@emmconsulting.com.au
M: 0402 259 892 or P: 02 9493 9500

Yours sincerely



John Zammit
Development Manager
OVERLAND Sun Farming Company



Kate Cox
Associate Environmental Scientist
EMM Consulting

9 January 2017

Ground Floor, Suite 01, 20 Chandos Street
St Leonards, NSW, 2065
PO Box 21
St Leonards, NSW, 1590

Maurice Morgan
Manager, Land Use (South West Region)
Roads and Maritime Services

T +61 2 9493 9500
F +61 2 9493 9599
E info@emmconsulting.com.au
www.emmconsulting.com.au

Re: State Significant Development applications – Hillston Sun Farm; Limondale Sun Farm; and Hay Sun Farm. Your ref: SWT16/00131; SF2016/217988; SW16/00137; SF2016/235976; SWT 16/00150; and SF2016/273275

Dear Maurice,

We are writing to you on behalf of OVERLAND Sun Farming Company Pty Ltd (OVERLAND) in relation to three photovoltaic (PV) solar developments proposed by OVERLAND in south-western NSW.

OVERLAND's personnel have successfully led benchmark renewable energy and infrastructure projects from start to finish and have a sound record that traverses early stage site identification, working with landowners and communities, obtaining consents and licences from government to build and operate, securing energy and grid connection contracts, arranging financing and managing construction and ongoing operations and power generation.

This experience includes responsibility for the development, financing, construction and operation of over 320 MW of renewable energy generation projects including the delivery of approximately 50 MW of renewable energy generation in NSW.

Each of the three proposals are State Significant Development (SSD) under the *Environmental Planning and Assessment Act 1979*. OVERLAND will be supported by EMM Consulting Pty Limited (EMM) in the preparation of the environmental impact statements (EISs) to support the applications for each of the proposals. The proposals include:

- Hillston Sun Farm (SSD 7955), on Kidman Way, Hillston within the Carrathool local government area (LGA);
- Limondale Sun Farm (SSD 8025), on Yanga Way, Balranald within the Balranald and Murray River LGAs; and
- Hay Sun Farm (SSD 8113), on Sidonia Road, Hay within the Hay LGA.

We acknowledge your responses to the Department of Planning and Environment (DP&E) dated 10 October 2016 (SSD 7955), 3 November 2016 (SSD 8025) and 15 December 2016 (SSD 8113), providing details of assessment requirements for these proposals as part of the Secretary's Environmental Assessment Requirements (SEARs). The matters raised within your responses were primarily in relation to traffic and transport. We have reviewed these letters and their attachments and will give consideration to the matters raised during the preparation of the EISs for these proposals. We have attached a copy of the SEARs for each of the proposals for your reference.

We would welcome the opportunity to meet with you at your office in Wagga Wagga to discuss these proposals. Should you have any questions or if you would be available to meet for a more detailed briefing, please do not hesitate to contact John Zammit at OVERLAND Sun Farming Company in the first instance.

John Zammit
Development Manager, OVERLAND
john.zammit@overlandsunfarming.com.au
M: 0433 293 427

Kate Cox
Associate Environmental Scientist, EMM Consulting
kcox@emmconsulting.com.au
M: 0402 259 892 or P: 02 9493 9500

Yours sincerely

A handwritten signature in black ink, appearing to read 'John Zammit', with a stylized, sweeping underline.

John Zammit
Development Manager
OVERLAND Sun Farming Company

A handwritten signature in black ink, appearing to read 'Kate Cox', with a stylized, sweeping underline.

Kate Cox
Associate Environmental Scientist
EMM Consulting



9 January 2017

Ground Floor, Suite 01, 20 Chandos Street
St Leonards, NSW, 2065
PO Box 21
St Leonards, NSW, 1590

Shane Wilson
Director, Development Services
Carrathool Shire Council

T +61 2 9493 9500
F +61 2 9493 9599
E info@emmconsulting.com.au
www.emmconsulting.com.au

Re: | State Significant Development application – Hillston Sun Farm (SSD 7955)

Dear Shane,

We are writing to you on behalf of OVERLAND Sun Farming Company Pty Ltd (OVERLAND) in relation to the Hillston Sun Farm, a photovoltaic (PV) solar development proposed by OVERLAND. The proposal will be developed on Kidman Way, Hillston in the Carrathool local government area (LGA).

OVERLAND's personnel have successfully led benchmark renewable energy and infrastructure projects from start to finish and have a sound record that traverses early stage site identification, working with landowners and communities, obtaining consents and licences from government to build and operate, securing energy and grid connection contracts, arranging financing and managing construction and ongoing operations and power generation.

This experience includes responsibility for the development, financing, construction and operation of over 320 MW of renewable energy generation projects including the delivery of approximately 50 MW of renewable energy generation in NSW.

The proposal is State Significant Development (SSD) under the *Environmental Planning and Assessment Act 1979*. OVERLAND will be supported by EMM Consulting Pty Limited (EMM) in the preparation of the environmental impact statement (EIS) to support the application for this proposal.

The Department of Planning and Environment (DP&E) provided details of assessment requirements for this proposal as part of the Secretary's Environmental Assessment Requirements (SEARs) on 14 October 2016. We have reviewed the SEARs and their attachments and will give consideration to the matters raised during the preparation of the EIS for this proposal. We have attached a copy of the SEARs for your reference.

We would welcome the opportunity to meet with you at your office in Goolgowi to discuss this proposal. Should you have any questions or if you would be available to meet for a more detailed briefing, please do not hesitate to contact John Zammit at OVERLAND Sun Farming Company in the first instance.

John Zammit
Development Manager, OVERLAND
john.zammit@overlandsunfarming.com.au
M: 0433 293 427

Kate Cox
Associate Environmental Scientist, EMM Consulting
kcox@emmconsulting.com.au
M: 0402 259 892 or P: 02 9493 9500

Yours sincerely

A handwritten signature in black ink, appearing to read 'John Zammit', with a stylized, sweeping flourish extending to the right.

John Zammit
Development Manager
OVERLAND Sun Farming Company

A handwritten signature in black ink, appearing to read 'Kate Cox', with a stylized, sweeping flourish extending to the right.

Kate Cox
Associate Environmental Scientist
EMM Consulting

Carrathool Shire Council

Please address all correspondence to the
General Manager



**PO Box 12
GOOLGOWI NSW 2652**

In reply quote:

Telephone: (02) 6965 1900

Enquiries to: **BP: File:**

Fax: (02) 6965 1379

Mr Bill Prosser

**E-mail: council@carrathool.nsw.gov.au
website: www.carrathool.nsw.gov.au**

29 June 2017

Mr J Zammit
Development Manager
Overland Sun Farming
L1, 23 Milton Parade
Malvern Vic., 3144

Dear Mr Zammit

Proposed Hillston Sun Farm

This is to advise that Carrathool Shire Council grants consent for vehicular access from Kidman Way across the paper roads to the site of the proposed Hillston Sun Farm and to the Essential Energy Substation immediately north of the site and for erection of the overhead transmission line above the paper roads to the Essential Energy Substation as shown in Fig. 2.3 in your Environmental Impact Statement.

Yours faithfully

**JOANNE TREACY
GENERAL MANAGER**

Per

A handwritten signature in blue ink, appearing to read "Bill Prosser", is written over a horizontal line.

**BILL PROSSER
DIRECTOR INFRASTRUCTURE SERVICES**

Carrathool Shire Council

Please address all correspondence to the
General Manager

In reply quote:
SW:sw File
Enquiries to:
Mr Shane Wilson



PO Box 12
GOOLGOWI NSW 2652

Telephone: (02) 6965 1900
Fax: (02) 6965 1379
E-mail: council@carrathool.nsw.gov.au
website: www.carrathool.nsw.gov.au

24 August 2016

NSW Planning & Environment
Major Projects

Dear Sir/Madam

OVERLAND SUN FARMING COMPANY – PROPOSED SOLAR FARM HILLSTON


Overland has been working with the Carrathool Shire Council for nearly three years since 2013 to identify, review and secure suitable land for the proposed development.

John Zammit (Development Manager, Overland) met with myself and Shane Wilson – Director Development Services on the 21st of July 2016 to discuss the project in detail with Council.

Council is fully supportive of the proposed development and consider the proposed site to be suitable for the development and we look forward to working with Overland up to and during the development.

If you have further concerns in regard to this matter please contact Council's Director Development Services, Mr Shane Wilson during office hours.

Yours faithfully



PHIL MARSHALL
GENERAL MANAGER

UNCLASSIFIED

Hi John,

Thanks for the information.

The Hay sun farm is close but not fully runway aligned and is 7km from the runway end at Hay Airport. Given its location and distance from the airport CASA does not consider it to be a potential hazard to aircraft operations.

The Hillston Sun Farm is very close to Hillston Airport. It is not runway aligned and so it is unlikely to present a hazard to aircraft operations. This airport is not certified or registered and CASA has no oversight of aerodrome operations at this location. CASA would recommend that discussion with local users take place to gauge the potential impact on aircraft operations.

CASA acknowledges that modern solar panels are designed to absorb and not reflect light. CASA's experience to date is that despite the large number of solar farms being developed around Australia – some on airports themselves – there have been no pilot reports of glare or of any safety issues or concerns related to these solar farms.

Regards

Matthew Windebank

Aerodrome Engineer

Air Navigation, Airspace & Aerodromes Branch

CASA \ Aviation Group

GPO BOX 2005 CANBERRA ACT 2601

T - 02 6217 1183

F - 02 6217 1500



From: Rowan Johnson <RJohnson@carrathool.nsw.gov.au>
Subject: Hillston Aerodrome
Date: 26 May 2017 at 10:31:57 am AEST
To: "john.zammit@overlandsunfarming.com.au"
<john.zammit@overlandsunfarming.com.au>
Cc: Shane Wilson <SWilson@carrathool.nsw.gov.au>

Hi John

Just replying by email to our phone conversation yesterday regarding Hillston aerodrome as requested, your sunfarm is approximately four kilometres south of our aerodrome, our bitumen runway runs east west as i am not a pilot or do i fly i am not certain if there will be glare off your panels for pilots to contend with when flying but in saying that the distance between aerodrome and your sunfarm will have no impact on planes landing at our aerodrome, i hope this answers your question.

Kind Regards

Rowan Johnson
Town Overseer
Carrathool Shire Council
Mobiile: 0429919092
Phone: (02) 69 672 243
Fax: (02) 69 672 245
Email: rjohnson@carrathool.nsw.gov.au

This e-mail, together with any attachments, is for the exclusive and confidential use of the addressee(s). Any other distribution, use of, or reproduction without prior written consent is strictly prohibited. Views expressed in this e-mail are those of the individual, except where specifically stated otherwise. No employee or agent is authorised to conclude any binding agreement on behalf of council by email. Carrathool Shire Council does not warrant or guarantee this message to be free of errors, interference or viruses.

Community consultation – community fact sheet and information boards presented at the community information session (May 2017), newspaper article and newspaper advertisement



FACTsheet APRIL 2017

Hillston Sun Farm

OVERVIEW

OVERLAND Sun Farming is proposing to develop the Hillston Sun Farm, a large-scale solar photovoltaic (PV) generation facility near Hillston. The Hillston Sun Farm will be located on land adjacent to the Essential Energy electrical substation and will connect to the 132 kV electricity distribution network. The sun farm will be made up of approximately 300,000 panels and cover an area of up to 300 hectares which is similar in size to around 420 football fields..

Site location

The Hillston Sun Farm is proposed on a site 3.5 kilometres south of Hillston, west of Kidman Way.

Reasons for choosing this site include:

- high availability of solar radiation;
- the land has been settled, cleared and farmed over a long period and hence there will be minimal impacts on native vegetation and Aboriginal heritage;
- adjacent to the Hillston substation which enables access to the electricity transmission network whilst not adversely impacting on sensitive native vegetation or heritage values in the surrounding landscape; and
- good access to the regional road network, which will allow infrastructure to be delivered to the site during the construction phase of the project.

Project components

Once constructed, the Hillston Sun Farm will include:

- a network of PV solar panel arrays;
- electrical collection systems, a project switchyard and a control room;
- a management hub, with demountable offices, amenities and equipment sheds;
- parking and internal access roads; and
- construction of a short electrical connection line to connect the sun farm to the substation.

Location of the Hillston Sun Farm





Community information session

OVERLAND is seeking the views of local community members about the Hillston Sun Farm. We value your comments and insight and encourage you to attend the upcoming community information session to share your views with us.

*Hillston Ex-Servicemen's and Citizens Club
111 High Street, Hillston
Wednesday 3 May from 8-10am.*

About OVERLAND Sun Farming

OVERLAND Sun Farming is an Australian business that is developing a world class portfolio of solar energy "sun farms" across regional Australia. OVERLAND has been responsible for the development, financing, construction and operation of over 320 MW of renewable energy generation. During 2016, OVERLAND led the development and financing of two 20 MW solar PV plants in Queensland and recently announced the construction of a further three large-scale solar PV projects in north western Victoria, totalling 320 MW.

OVERLAND are developing future solar energy sun farms across Australia including proposed sun farms at Hay and Balranald in south-west NSW.

Benefits of the project

It is anticipated that the project will provide a number of benefits to the local and wider community including:

- it will create employment opportunities, including a peak of between 100-150 employees during construction and up to five full-time positions during operations;
- it will generate enough electricity to power up to 32,000 homes each year;
- it will help NSW meet the renewable energy targets established under the NSW Government's Renewable Energy Action Plan;
- it will contribute to the Commonwealth Government's target of 33,000 gigawatt hours (GWh) of renewable energy generated by 2020; and
- it will increase energy security by contributing to a more diverse energy mix.

Approval process

The project is State Significant Development, and therefore OVERLAND is required to submit a Development Application and Environmental Impact Statement to the NSW Department of Planning and Environment. OVERLAND will also consult with other government stakeholders including Carrathool Shire Council.

Where to go for more information

For further information about the Hillston Sun Farm project, please visit their website.



www.overlandsunfarming.com.au/hillston-sun-farm

www.overlandsunfarming.com.au/hillston-contact-page







> *The Project*

The project will:

-  involve the installation of around 300,000 photovoltaic (PV) solar panels, and connection to the adjacent 132kV Essential Energy electricity substation; and
-  cover an area of up to 300 hectares, an area similar in size to around 420 football fields.

> PROJECT BENEFITS FOR HILLSTON COMMUNITY

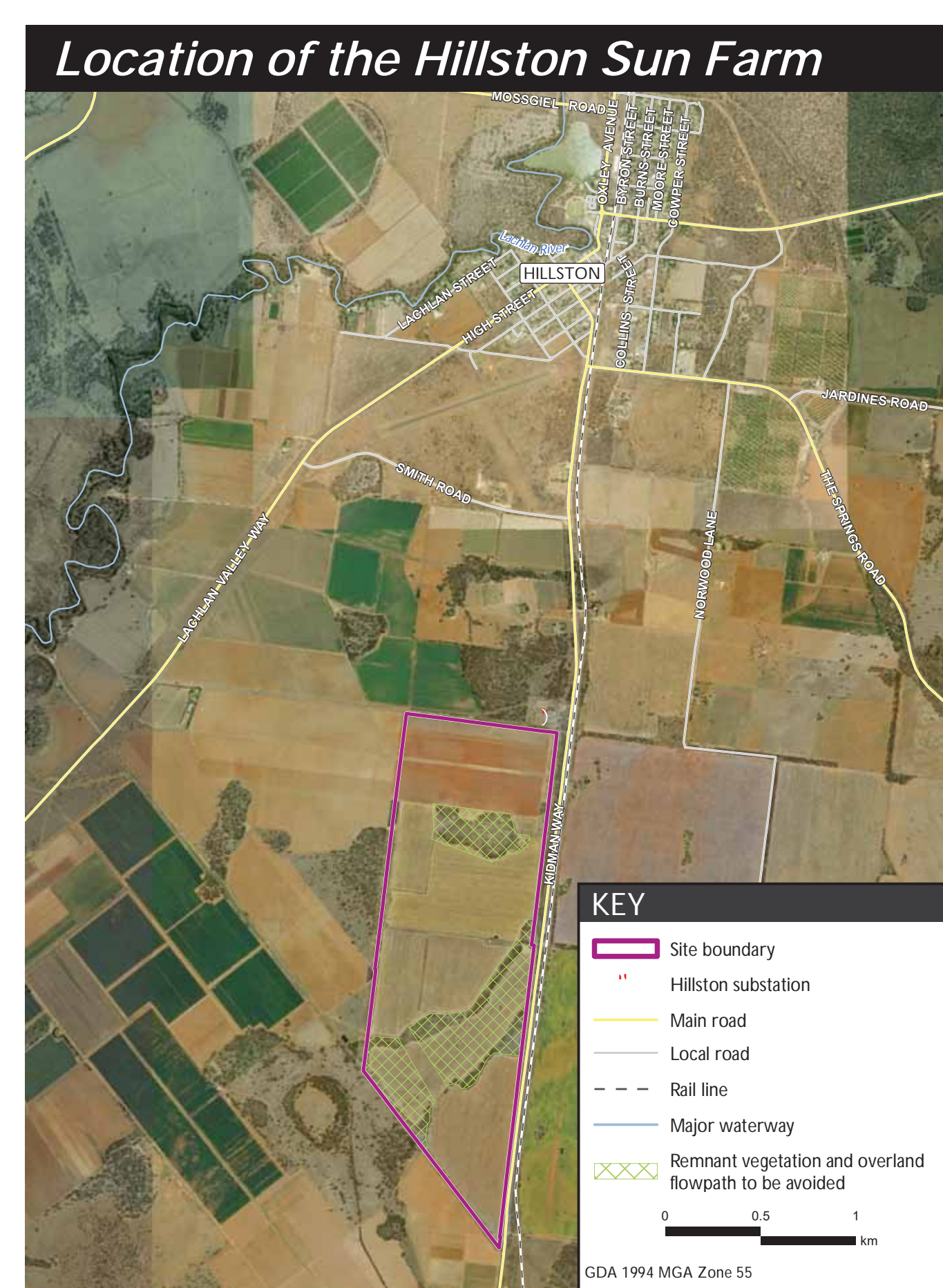
-  **Employment** – it will create employment opportunities, including a peak of between 100 - 150 employees during construction and up to five full-time positions during operations;
-  **Industry and business diversification** – it will diversify and strengthen the local economy;
-  **Expenditure** – it will inject money into the local area through employee expenditure locally and services catering to the project;
-  **Electricity generation** – once constructed, it will produce enough electricity to power up to 32,000 homes each year, which is enough electricity to support more than 53 communities with a population similar to the town of Hillston.

OVERLAND would like to be a part of the Hillston community and will work with the landholder, Carrathool Shire Council, the community and other stakeholders to maximise the project's benefits for the wider community.

> SITE SELECTION AND PROJECT DESIGN

OVERLAND has been working with the landholder for an extensive period of time. The objective of the site selection and project design process has been to work with the landowner to develop an efficient project that avoids and minimises environmental impacts and surrounding land uses. OVERLAND's team, together with environmental specialists and the landholder have actively sought to identify and avoid environmental constraints as part of this process.

Agricultural production and land management practices will continue on surrounding land.



OVERLAND SUN FARM FOR HILLSTON

Overland Sun Farming is proposing to develop the Hillston Sun Farm, a large-scale solar Photovoltaic (PV) generation facility near Hillston.

The Hillston Sun Farm will be located on land adjacent to the Essential Energy electrical substation and will connect to the 132 KV electricity distribution network.

The Sun farm will be made up of approximately 300,000 panels and cover an area of up to 300 hectares which is similar in size to around 420 football fields.

Overland Sun Farming

DOCTOR'S ARRIVAL

Latest report on the arrival of our new Doctor and his possible commencement at the Hillston Medical Centre is that Doctor Ahmed Hosni may commence next Monday 15th May.

DEATH Mr BILL VIANT

The death has taken place Mr Bill Viant at the age of 82 years.

Bill, formerly "Val-roona" Willanthry and more recently of Hillston passed away at Hillston Hospital.

He is survived by his wife Joan, and their children Steven, Lindy Martin and Craig.

His funeral is to be held from the Anglican Church to-morrow Thursday.

would like to be part of the Hillston Community and will work with Carrathool Shire Council and other local stakeholders to maximise the project's benefits for the wider community.

The project will involve the installation of around 300,000 photovoltaic solar panels and connection to the adjacent 132kv Essential Energy electricity substation; and cover an area of up to 300 hectares, an area similar in size to around 4200 football fields.

PROJECT BENEFITS FOR HILLSTON COMMUNITY

Employment - it will create employment opportunities, including a peak of between 100 - 150 employees during construction and up to

five full-time positions during operations.

Industry and business diversification - it will

COTTON CROPS LOOKING GOOD

Local Cotton crops along the Lachlan river road close to Hillston town are looking good and are a picture as they spread over hundreds of hectares on both sides of the road.

Most local cotton crops are almost ready for picking. Those already picked are being stockpiled with ginning expected to begin with two weeks.

diversity and strengthen the local economy.

Expenditure - it will inject money into the local area through employee expenditure locally and services catering to the project.

Electricity generation - once constructed, it will produce enough electricity to power up to 32,000 homes each year, which is enough electricity to support more than 53 communities with a population similar to the town of Hillston.

SPECTATOR NOTICE PHOTOS

We at the Spectator Office appreciate Photos sent for publication in the SPEC, but would ask that any photos sent in have notation of who they are or a caption stating what the photo is of and name of any people in the photo. Thanks in Advance

Editor



John Zammit, Development Manager for Overland Sun Farming and Kate Cox from EMM Consultancy, Sydney giving a presentation and answering concerns of local residents at the Exservicemen's Club last Wednesday. 12-14 people were in attendance to ask questions and listen to the presentation about the establishment of a solar farm on the Kidman Way. Those present included local tradesmen, farmers and representatives of various local community organisations.

CENTRAL SCHOOL EXCURSION

Hillston Central School students and parents have embarked on a project to harvest Olives to raise funds for their excursion to Central Australia.

Students will be harvesting the olives on Ross McLachlan's Boundary this coming Sunday, 14th May.

Once harvested the olives will be processed to produce olive oil at the Montoro Olives Plant on Mitchell's Road at no cost to the school.

Taste and Smell Chlorine in Water?

Drinking water which sometimes may taste or smell of chlorine is still safe to drink.

The smell will evaporate simply by leaving a jug of uncovered water in the fridge for a short period of time or just pour water from one jug to another several times.

If you are still concerned please don't hesitate to contact Council on 02 6965 1900 or 02 6961 7600.

Council Applying For Storm Damage Funding

Director Infrastructure Services has advised of Council's intention to advertise Invitation to Tender for

Storm Damage Rectification Works.

"Documents were drawn up towards the end of last year to obtain tenders from Contractors to carry out repairs to the roads damaged by flood and storms. Due to changes in staff etc. tenders were not called."

"I have had discussion with RMS and additional inspections were carried. The RMS coordinator is now satisfied with the sections of roads to be treated. There was a suggestion that Council may be permitted to do the work as the Federal Minister offered this avenue to the States but only Queensland has taken it up. Even if NSW

did decide to take up this offer it would take too long for approval to come through, so we must go with Contractors."

"The tender documents previously drawn up need some amendments to give more precise information to the tenderers so each party is clear on the work to be done. Staff are working on that now and it should be completed very soon. The RMS Co-ordinator has indicated that he wants to check the amount of gravel proposed for each repair before tenders are called but that should only take a couple of days."

LADIES GOLF

On Wednesday 3rd May three ladies played versus par. Noreen Blunden winning at +2 in a c/b from Sue Connor. Sue hit NTP on the 4th.

Sunday 6th saw 4 ladies playing stableford. Kay Irvine won the ay on 39 pts with next best Noreen Blunden on 36. Noreen hit the best drive and chip on the 10th.

Sunday 7th was the second day of medal and putting comp with four ladies playing. Kay Irvine won with 67 nett from next best Angela Mearburn with 70 nett. Kay also scored least putts (26) - on fire Kay!!

Alison Jardine and Heather Lyall travelled to Leeton on Sunday for a ladies open comp. Alison did a bit of gardening and Heather now has a lot of experience with bunker shots. Both had a great day despite mediocre scores and managed to win Div. 3 best 9 holes - Alison on holes 1-9 and Heather on 10-18. Thanks to the ladies for their hospitality

Well done to all players and looking forward to our Breast Cancer day on Sunday 21st.

ACWW's Women Walk the World



CWA members and friends participated in ACWW's Women Walk the World" on Sunday 1st May.

If you have news for
"Around & About"
or other news
please phone
6967 2512

HILLSTON SUN FARM

Community Information Session

OVERLAND Sun Farming invites you to attend a community information and feedback session on the proposed Hillston Sun Farm, 3.5 kilometres south of the town of Hillston.

Date: *Wednesday 3 May - 8 - 10am*

Venue: *Hillston Ex-Servicemen's and Citizens Club, 111 High Street, Hillston*

Representatives from OVERLAND and the project team will be available to discuss the project, answer your questions and hear your views.

For further information about the Hillston Sun Farm, please visit OVERLAND's website.

www.overlandsunfarming.com.au/Hillston-sun-farm



