

SHEET No. SHEET NAME

000 INFORMATION

L000	TITLE SHEET
L001	LEGEND AND MATERIALS SCHEDULE
L002	PLANT SCHEDULE
L003	TREE RETENTION AND REMOVAL PLAN
L004	ILLUSTRATIVE MASTERPLAN

200 SURFACE FINISHES PLAN

L200	OVERALL PLAN
L201	SURFACE FINISHES PLAN 1
L202	SURFACE FINISHES PLAN 2
L203	SURFACE FINISHES PLAN 3
L204	SURFACE FINISHES PLAN 4

600 SECTIONS + ELEVATIONS

L600	SECTION LOCATION PLAN
L601	SECTIONS AND ELEVATIONS 1
L602	SECTIONS AND ELEVATIONS 2
L603	SECTIONS AND ELEVATIONS 3
L604	SECTIONS AND ELEVATIONS 5
L605	SECTIONS AND ELEVATIONS 6

700 DETAILS

L700	POOL DETAILS
L701	POOL DETAILS
L703	CABANA DETAILS
L704	PLAYGROUND DETAILS



PROJECT PERSPECTIVE - CHC



LOCATION PLAN



Department of Planning
and Environment

Issued under the Environmental Planning and Assessment Act 1979

Approved Section 4.55 (2) Modification Application

No: SSD 7942 MOD 1

Granted on 15 February 2022

Signed: R.R.

Sheet No: 1 of 19

NOTES

THESE DRAWINGS ARE TO BE READ IN CONJUNCTION WITH ALL LANDSCAPE SCHEDULES AND TECHNICAL SPECIFICATION AND OTHER CONSULTANTS DRAWINGS. CHECK AND VERIFY ALL DIMENSIONS AND SITE CONDITIONS PRIOR TO THE COMMENCEMENT OF ANY WORK. DO NOT SCALE DRAWINGS - REFER TO FIGURED DIMENSIONS ONLY. INFORM OCULUS OF ANY DISCREPANCIES FOR CLARIFICATION BEFORE PROCEEDING. UNLESS NOTED OTHERWISE THIS DRAWING IS NOT FOR CONSTRUCTION.

© OCULUS 2019. All rights reserved



SERVICES SHOWN ON THIS DRAWING ARE APPROXIMATELY ONLY. THE EXACT LOCATION IS TO BE CONFIRMED ON SITE BY CONTRACTOR PRIOR TO COMMENCEMENT WORK.

KEY PLAN

ISSUE	DATE	AMENDMENT	DRN	APRVD
A	10.03.21	ISSUE FOR S4.55	BJ	AK
B	29.10.21	ISSUE FOR S4.55	BJ	AK

O C U L U S

level 1 / 5 wilson street, p.o. box 307, newtown, nsw 2042
p 02.9557.5533 australia@oculus.info
SYDNEY MELBOURNE WASHINGTON

PROJECT
URBN SURF SYDNEY
HILL ROAD, SYDNEY OLYMPIC PARK NSW
CLIENT
URBN SURF
LVL 2, 95 PITT STREET SYDNEY NSW 2000
ARCHITECT
CLARKE HOPKINS CLARKE
HOLT STREET, SURRY HILLS 2010

STATUS
S4.55
DEVELOPMENT APPLICATION

DRAWING SCALE

NORTH POINT



DRAWING
COVER SHEET

PROJECT No
S19-023

DRAWING No
L000

SHEET SIZE
A1

ISSUE
B

MATERIALS, FINISHES & FIXTURES SCHEDULE

CODE	TYPE	ITEM	LOCATION	SPECIFICATION/ DESCRIPTION	DIMENSIONS
PAVING					
PV01	Paving	Insitu Concrete paving Exposed Aggregate	Public Domain	Paving Unit Thickness: 150mm Colour: Uncoloured Finish: Grit Blast	Varies
PV02	Paving	Insitu Concrete paving Custom Aggregate	Public Domain	Paving Unit Thickness: 150mm Colour: Bondi Pacific Finish: Honed, Grit blast	Varies
PV03	Paving	Crazy Pave	Public Domain	Paving Unit Thickness: Varies 15 - 30 mm Colour: Endicott Finish: split Supplier: Eco Outdoor	Varies
PV04	Sand	Playground Sand	Play area	Product: TBC Supplier: TBC	Varies
PV05	Softfall	Softfall	Outdoor exercise area	Product: TBC Supplier: TBC	Varies
WALLS AND EDGES					
WA01	Walls	Insitu concrete seating wall	various locations	Material: Class 2 insitu concrete Colour: White Finishes: Fillet edge	Varies
WA02	Walls	Rendered Blockwork retaining wall	Carpark edge	Material: Class 2 insitu concrete Colour: White Finishes: Fillet edge	Varies
TE01	Edges	Recycled Timber Edge	Planter edges	Material: Recycled hardwood timber Colour: TBC Supplier: Ironwood timber	
SE01	Edges	Steel Edge	Planter edges	Material: Galvanised Mild Steel Finish:	
BA01	Balustrade	Powder coated mild Steel Balustrade	Lagoon Walls	Material: Galvanised Mild Steel Finish: Powdercoated	1050mm High
FE01	Fence	Recycled timber screen fence	Along Carpark	Material: Recycled Timber batton Supplier: Ironwood timber	1800mm High
FE02	Fence	Recycled timber fence	Along Carpark	Material: Recycled Timber palling Finish: Painted	1800mm High
FE03	Fence	Security Fence	West of Lagoon	Material: Steel mesh Finish: Painted	1800mm High
FURNITURE					
FN01	Furniture	Recycled Brick seats	Site entrance	Material: Recycled Brick Colour: To match architectural Finishes: Bagged Supplier: tbc	450h x 500w x varies(l)
FN02	Furniture	Recycled Timber Bench Seats	Various locations	Material: Steel and Recycled hardwood timber Colour: Painted Steel Finishes: TBC Supplier: TBC	Varies
FN03	Furniture	Recycled Timber Table	Cabanas	Material: Steel and hardwood timber Colour: Painted Steel Finishes: Stained Timber	
FN04	Furniture	Cabana - Recycled Timber and steel Refer to Detail	Southern Lagoon edge	Material: Steel and Recycled hardwood timber Colour: Painted Steel Finishes: Recycled Timber	3000 x 4000mm
FN05	Furniture	Lounge Chairs	Southern Lagoon edge	Material: Timber Colour: TBC Product: TBC Supplier: TBC	TBC
FN06	Furniture	Shade umbrella	Various locations	Material: TBC Colour: TBC Finishes: TBC Supplier: TBC	3500Ø
FN07	Furniture	Picnic tables	West of Lagoon	Product: Sturt Picnic Set Supplier: Mos urban Material: Hardwood timber	
FN08	Furniture	Bike racks	Site entrance	Material: TBC Colour: TBC Finishes: TBC Supplier: TBC	
FN09	Furniture	Water bubbler	Lagoon Edge	Material: Stainless Steel Colour: TBC Finishes: TBC Supplier: TBC	
FN10	Furniture	Rubbish bins	Various locations	Material: Timber and stainless steel Colour: TBC Finishes: TBC Supplier: TBC	
FN11	Furniture	Shade Sail	Play area	Material: Colour: Sand Finishes: Supplier: Shade Us Now	
DR01	Drainage	Drainage pit	Various locations	Product: TBC Supplier: TBC	TBC

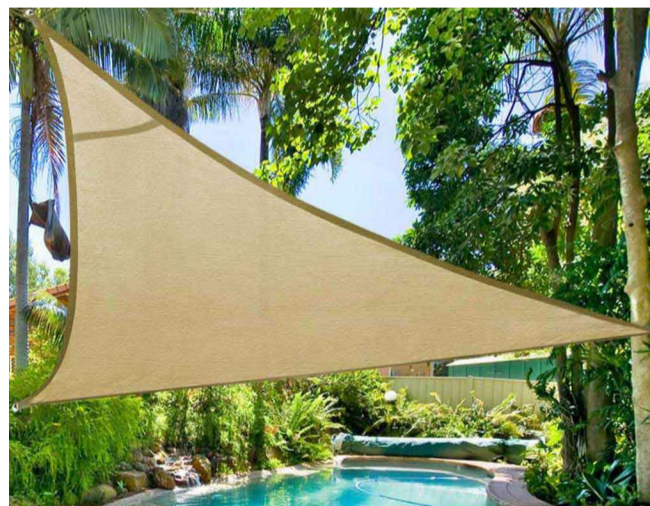
POOLS					
RP01	Pool	Shallow Pool end	Southern Lagoon edge	Shallow concrete pool with organic edge.	0 - 300mm Depth
RP02	Pool	Wading pool	Southern Lagoon edge	Concrete pool with organic edge, seating	Varies
RP03	Pool	Spa pool	Southern Lagoon edge	Concrete spa pool with organic edge, seating	900mm Depth(MAX) 8 person capacity
PLAY					
PL01	Play	Water Jets	Southern Lagoon edge	Product: TBC Supplier: TBC	
PL02	Play	Boat Structure	Play area	Product: TBC Supplier: TBC Colour: TBC Material: TBC	
PL03	Play	Timber stepping logs	Play area	Product: Recycled Hardwood timber logs Supplier: Ironwood timber Material: Recycled Hardwood timber Finish: Sanded to ensure no sharp edges	250Ø x 300mm high
PL04	Play	Timber balance beams	Play area	Product: Recycled Hardwood timber logs Supplier: Ironwood timber Material: Recycled Hardwood timber Finish: Sanded to ensure no sharp edges	Varies
PL05	Play	Timber climbing net	Play area	Material: Recycled timber and rope Colour: Finishes: Supplier: TBC	
PL06	Play	Balance surf boards	Play area	Material: TBC Colour: Finishes: Supplier: TBC	
PL07	Play	Timber Lifeguard tower	Play area	Recycled and painted timber tower with slide, ladder, rope bridge, ramp and rock climbing wall	
PL08	Outdoor Fitness Area	Outdoor exercise area	West of Lagoon	Material: Galvanised steel, HDPE, various Colour: Nut brown Finishes: various Supplier:	Varies
SOFTSCAPE					
AT01	Artificial Turf	Artificial Turf	Southern Lagoon edge	Pile Height: 35mm Manufacturer: Tiger Turf Product: Summer Envy 35 XWR Base: Compacted Road Base	Varies
TF01	Natural Turf	Natural Turf Lawn	Various locations	Cultivar Name: Village Green Kikuyu Species: Male Sterile Kikuyu	Varies
MP01	Planting	Mass Planting on Grade	Various locations	Refer Planting Schedule	Varies
MP02	Planting	Native Batter Planting	Various locations	Refer Planting Schedule	Varies
TP01	Tree Planting	Tree on Grade	Various locations	Refer Planting Schedule	Varies



RP02: WADING POOL



PV03: CRAZY PAVE



FN11: SHADE SAIL



FN04: RECYCLED TIMBER AND STEEL CABANA



FN02: RECYCLED TIMBER BENCH SEATS



AT01: ARTIFICIAL TURF



PL04: TIMBER BALANCE BEAMS




PL01: WATER JETS



FN06: SHADE UMBRELLA



PV01: INSITU CONCRETE PAVING, EXPOSED AGGREGATE



Department of Planning
and Environment

Issued under the *Environmental Planning and Assessment Act 1979*
Approved Section 4.55 (2) Modification Application
No: SSD 7942 MOD 1
Granted on 15 February 2022
Signed: R.R.
Sheet No: 2 of 19

NOTES

THESE DRAWINGS ARE TO BE READ IN CONJUNCTION WITH ALL LANDSCAPE SCHEDULES AND TECHNICAL SPECIFICATION AND OTHER CONSULTANTS DRAWINGS. CHECK AND VERIFY ALL DIMENSIONS AND SITE CONDITIONS PRIOR TO THE COMMENCEMENT OF ANY WORK. DO NOT SCALE DRAWINGS - REFER TO FIGURED DIMENSIONS ONLY. INFORM OCULUS OF ANY DISCREPANCIES FOR CLARIFICATION BEFORE PROCEEDING. UNLESS NOTED OTHERWISE THIS DRAWING IS NOT FOR CONSTRUCTION.



SERVICES SHOWN ON THIS DRAWING ARE APPROXIMATELY ONLY. THE EXACT LOCATION IS TO BE CONFIRMED ON SITE BY CONTRACTOR PRIOR TO COMMENCEMENT WORK.

NOTE: ALL MATERIALS AND FINISHES ARE SUBJECT TO FINAL APPROVAL AND MAY BE SUBSTITUTED BASED ON AVAILABILITY OF MATERIALS, EQUIVALENT ALTERNATES AND SUPPLIER PROCUREMENT. THE SCHEDULE IS PROVIDED FOR INDICATIVE REFERENCE ONLY.

KEY PLAN

ISSUE	DATE	AMENDMENT	DRN	APPRD
A	10.03.21	ISSUE FOR \$4.55	RB	AK
B	29.10.21	ISSUE FOR \$4.55	BJ	AK

O C U L U S

level 1 / 5 wilson street, p.o. box 307, newtown, nsw 2042
p 02.9557.5533 australia@oculus.info
SYDNEY MELBOURNE WASHINGTON

PROJECT
**URBN SURF SYDNEY
HILL ROAD, SYDNEY OLYMPIC PARK NSW**

CLIENT
**URBN SURF
LVL 2, 95 PITT STREET SYDNEY NSW 2000**

ARCHITECT
**CLARKE HOPKINS CLARKE
HOLT STREET, SURRY HILLS 2010**

STATUS
**\$4.55
DEVELOPMENT APPLICATION**

DRAWING SCALE

NORTH POINT

DRAWING
**LEGEND AND
MATERIALS SCHEDULE**

PROJECT №
S19-023

SHEET SIZE
A1

DRAWING №
L001

ISSUE
B

Indicative Plant Schedule

Feature Trees

Symbol	Botanic Name	Common Name	Size	Preferred Position	Mature Ht and Sp	Density / SQ.m	Quantity
AH	<i>Araucaria heterophylla</i>	Norfolk Island Pine	1000lt	Full Sun	18.0 x 7.0m	as shown	2
BI	<i>Banksia integrifolia 'sentinal'</i>	Coast Banksia	200lt	Full Sun	5.0 x 3.0m	as shown	11
HT	<i>Hibiscus tiliaceus</i>	Cottonwood	400lt	Full Sun	8.0 x 5.0m	as shown	13
PP	<i>Pandanus pedunculatus</i>	Screw pine	1000L	Full Sun	10.0 x 4.0m	as shown	4
PR	<i>Plumeria rubra var. acutifolia</i>	Frangipani	400lt	Full sun or Part Shade	3.5 x 2.5m	as shown	1

Feature and Accent Plants

Symbol	Botanic Name	Common Name	Size	Preferred Position	Mature Ht and Sp	Density / SQ.m	Quantity
AlSi	<i>Alcantarea imperialis 'Silver Plum'</i>	Giant Bromeliad	45lt	Full sun or Part Shade	1.0 x 1.5m	as shown	28
CyRe	<i>Cycas revoluta</i>	Sago Palm	45lt	Full Sun	1.5 x 1.5m	as shown	17
HoFo	<i>Howea forsteriana</i>	Kentia palm	100lt	Full sun or Part Shade	6.0 x 3.0m	as shown	8
PhRo	<i>Philodendron 'Rojo Congo'</i>	Rojo Congo Philodendron	25lt	Part Shade	1.2 x 1.2m	4	208
StNi	<i>Strelitzia nicolai</i>	Giant White Bird of Paradise	100lt	Full Sun	3.0 x 2.5m	as shown	45
ZaFu	<i>Zamia furfuracea</i>	Cardboard Palm	25lt	Full sun or Part Shade	1.0 x 0.8m	as shown	23

Shrubs & Groundcovers MP01

Symbol	Botanic Name	Common Name	Size	Preferred Position	Mature Ht and Sp	Spacing / Ctrs	Quantity
BrMu	<i>Brachyscome multifida</i>	Cut-Leaf Daisy	150mm	Full sun	0.2 x 0.5m	4	42
CaGI	<i>Carpobrotus glaucescens</i>	Pig face	150mm	Full Sun	0.2 x 2.0m	4	104
CaCo	<i>Casuarina glauca 'Cousin It'</i>	Casurina Cousin it	200mm	Full sun	0.2 x 1.5m	2	21
ChAp	<i>Chryscephalum apiculatum</i>	Common Everlasting	200mm	Full Sun	0.2 x 0.5m	6	156
CrOv	<i>Crassula ovata 'Blue Bird'</i>	Blue Jade	200mm	Full Sun	1.0 x 1.0m	4	104
DIMi	<i>Dichelachne micrantha</i>	Short-hair Plume-grass	150mm	Full Sun	1.0 x 0.8m	8	208
FiNo	<i>Ficinia nodosa</i>	Knobby Club Rush	200mm	Full Sun	1.0 x 0.8m	8	416
FiPu	<i>Ficus pumila</i>	Creeping fig	150mm	Part Shade	6.0 x 6.0m	4	21
KaOr	<i>Kalanchoe orgyalis 'Copper Spoons'</i>	Copper spoons	200mm	Full Sun	1.0 x 1.0m	4	104
LiMu	<i>Liriope muscari 'Evergreen Giant'</i>	Evergreen Giant	150mm	Full Sun	0.5 x 0.5m	6	468
LoLo	<i>Lomandra longifolia 'tanika'</i>	Lomandra Tanika	150mm	Full Sun	0.5 x 0.6m	4	104
MaSe	<i>Maireana sedifolia</i>	Bluebush	150mm	Full Sun	1.0 x 1.0m	4	104
MyPa	<i>Myoporum parvifolium</i>	Creeping Boobialla	150mm	Full sun	0.2 x 1.5m	4	104
PoLa	<i>Poa labillardieri 'Eskdale'</i>	Poa 'Eskdale'	150mm	Full sun or Part Shade	0.6 x 0.5m	8	416
SeMe	<i>Sedum mexicanum 'gold mound'</i>	Mexican stonecrop	150mm	Full Sun	0.2 x 0.6m	6	63
WaSt	<i>Wahlenbergia stricta</i>	Native Bluebelle	150mm	Full Sun	0.4 x 0.4m	6	63
WeFr	<i>Westringia fruticosa 'grey box'</i>	Grey Box Westringia	200mm	Full sun or Part Shade	0.45 x 0.45m	2	52
						AREA	520
						TOTAL	2706

Native Batter Planting Mix MP02

Symbol	Botanic Name	Common Name	Size	Preferred Position	Mature Ht and Sp	Spacing / Ctrs	Quantity
TREES							
ET	<i>Eucalyptus tereticornis</i>	Forest Red Gum	75lt	Full Sun	35.0 x 10.0m	as shown	4
EP	<i>Eucalyptus paniculata</i>	Thin Leaved Stringybark	75lt	Full Sun	30.0 x 10.0m	as shown	4
SG	<i>Syncarpia glomulifera</i>	Turpentine	75lt	Full Sun	50.0 x 10.0m	as shown	3
EP	<i>Eucalyptus punctata</i>	Grey Ironbark	75lt	Full Sun	35.0 x 10.0m	as shown	3
SHRUBS AND GROUNDCOVERS							
AcMy	<i>Acacia myrtifolia</i>	Myrtle Wattle	tube	Full Sun	2.0 x 2.0m	2	360
ArMi	<i>Arthropodum milleflorum</i>	Vanilla Lily	tube	Full Sun	0.5 x 0.4m	2	360
AuD	<i>Austromyrtus dulcis</i>	Midgenberry	tube	Full Sun	0.8 x 1.0m	2	360
DiRe	<i>Dianella revoluta</i>	Blueberry Lily	tube	Full Sun	1.0 x 1.5m	2	180
DIMi	<i>Dichelachne micrantha</i>	Short-hair Plume-grass	tube	Full Sun	1.0 x 0.8m	2	360
HaVi	<i>Hardenbergia violacea</i>	Native sarsaparilla	tube	Full sun or Part Shade	0.8 x 2.0m	2	180
HyGr	<i>Hypericum gramineum</i>	Small St Johnswort	tube	Full Sun	0.3 x 0.2m	2	360
LoLo	<i>Lomandra longifolia 'Tanika'</i>	Lomandra Tanika	tube	Full Sun	0.5 x 0.6m	2	360
OzDi	<i>Ozothamnus diosmitifolius</i>	Rice flower	tube	Full Sun	1.5 x 0.8m	2	360
PePi	<i>Persoonia pinitolia</i>	Pine-leaved Geebung	tube	Full sun or Part Shade	4.0 x 4.0m	2	180
ThAu	<i>Themeda australis</i>	Kangaroo grass	tube	Full sun or Part Shade	0.7 x 0.5m	2	540
						AREA	1800
						TOTAL	3074

LEGEND

Araucaria heterophylla

Pandanus pedunculatus

Banksia integrifolia 'sentinal'

Plumeria rubra var. acutifolia

Howea forsteriana

Eucalyptus varieties

Hibiscus tiliaceus

Strelitzia nicolai

Cycas revoluta

Zamia furfuracea

Alcantarea imperialis 'Silver Plum'

Banksia integrifolia 'sentinal'
Coast Banksia

Hibiscus tiliaceus
Cottonwood

Pandanus pedunculatus
Screw pine

Plumeria rubra var. acutifolia
Frangipani

Cycas revolta
Sago Palm

Philodendron 'Rojo Congo'
Rojo Congo Philodendron

Strelitzia nicolai
Giant White Bird of Paradise

Zamia furfuracea
Cardboard Palm

Brachyscome multifida
Cut-Leaf Daisy

Casuarina glauca 'Cousin It'
Casurina Cousin it

Chryscephalum apiculatum
Common Everlasting

Crassula ovata 'Blue Bird'
Blue Jade

Ficinia nodosa
Knobby Club Rush

Kalanchoe orgyalis 'Copper Spoons'
Copper spoons

Maireana sedifolia
Bluebush

Westringia fruticosa 'grey box'
Grey Box Westringia

Eucalyptus punctata
Grey Ironbark

Acacia myrtifolia
Myrtle Wattle

Dichelachne micrantha
Short-hair Plume-grass

Themeda australis
Kangaroo grass

Department of Planning and Environment

Issued under the Environmental Planning and Assessment Act 1979

Approved Section 4.55 (2) Modification Application

No: SSD 7942 MOD 1

Granted on 15 February 2022

Signed: R.R.

Sheet No: 3 of 19

NOTES

THESE DRAWINGS ARE TO BE READ IN CONJUNCTION WITH ALL LANDSCAPE SCHEDULES AND TECHNICAL SPECIFICATION AND OTHER CONSULTANTS DRAWINGS. CHECK AND VERIFY ALL DIMENSIONS AND SITE CONDITIONS PRIOR TO THE COMMENCEMENT OF ANY WORK. DO NOT SCALE DRAWINGS - REFER TO FIGURED DIMENSIONS ONLY. INFORM OCULUS OF ANY DISCREPANCIES FOR CLARIFICATION BEFORE PROCEEDING. UNLESS NOTED OTHERWISE THIS DRAWING IS NOT FOR CONSTRUCTION.

© OCULUS 2019. All rights reserved

SERVICES SHOWN ON THIS DRAWING ARE APPROXIMATELY ONLY. THE EXACT LOCATION IS TO BE CONFIRMED ON SITE BY CONTRACTOR PRIOR TO COMMENCEMENT WORK.

KEY PLAN

ISSUE	DATE	AMENDMENT	DRN	APRVD
A	10.03.21	ISSUE FOR S4.55	RB	AK
B	29.10.21	ISSUE FOR S4.55	BJ	AK

OCULUS

level 1 / 5 wilson street, p.o. box 307, newtown, nsw 2042
p 02.9557.5533 australia@oculus.info
SYDNEY MELBOURNE WASHINGTON

PROJECT

URBN SURF SYDNEY
HILL ROAD, SYDNEY OLYMPIC PARK NSW

CLIENT

URBN SURF
LVL 2, 95 PITT STREET SYDNEY NSW 2000

ARCHITECT

CLARKE HOPKINS CLARKE
HOLT STREET, SURRY HILLS 2010

STATUS

S4.55
DEVELOPMENT APPLICATION

DRAWING SCALE

NORTH POINT

DRAWING

PLANT SCHEDULE

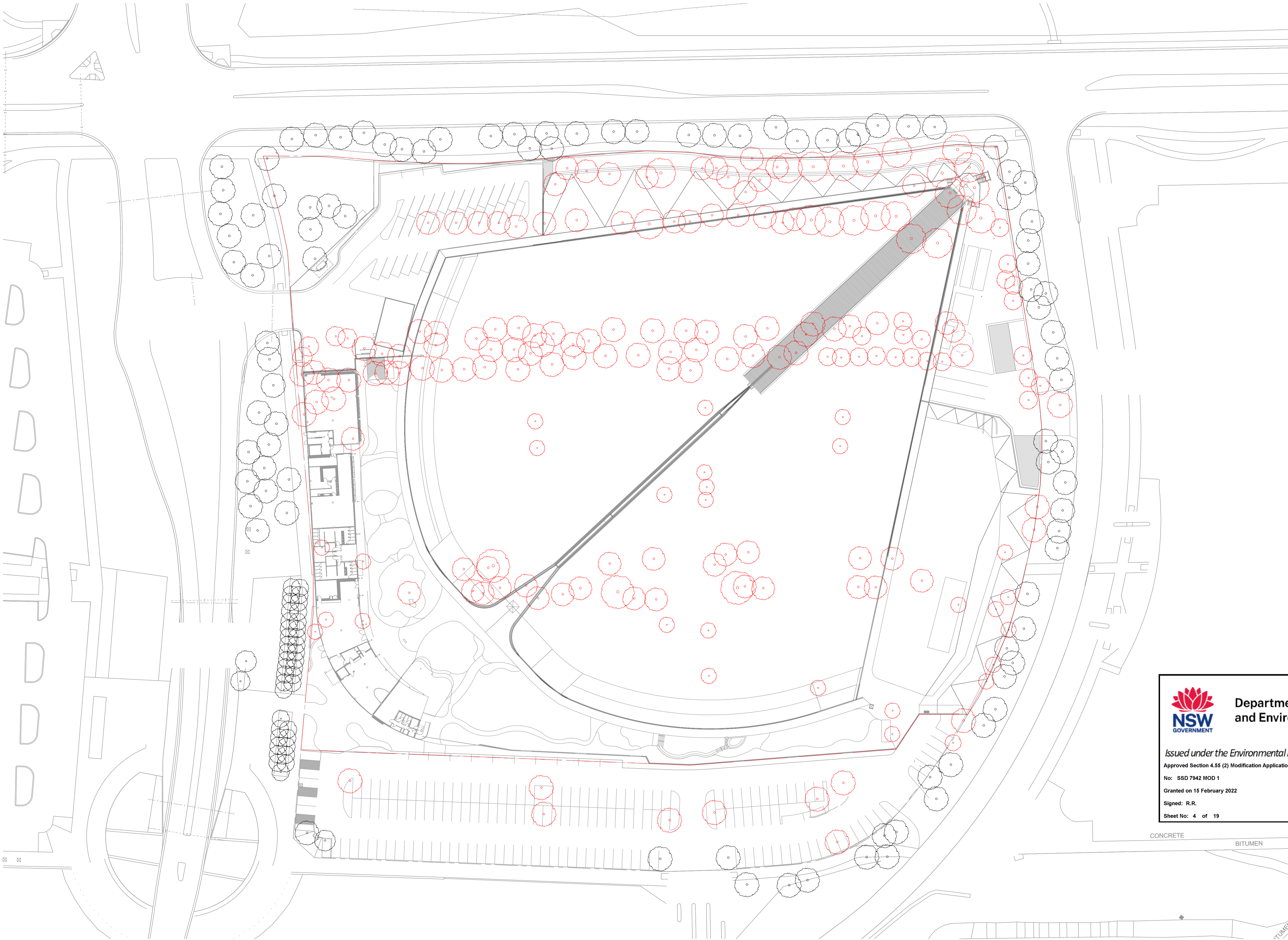
PROJECT №
S19-023

DRAWING №
L002


SHEET SIZE
A1


ISSUE
B


FILE PATH:P:\SYDNEY\S19-023 WAVE PARK URBN SURF.06. CONCEPT DESIGN.02. CAD DRAWINGS\01. SHEET SETS\OC_S19-023_000_INFORMATION.DWG; DATE PLOTTED:29/10/2021; PLOTTED BY:BRITTANY JOHNSTON



LEGEND

 TREE TO BE REMOVED

 TREE TO BE RETAINED



Department of Planning
and Environment

Issued under the Environmental Planning and Assessment Act 1979

Approved Section 4.55 (2) Modification Application

No: SSD 7942 MOD 1

Granted on 15 February 2022

Signed: R.R.

Sheet No: 4 of 19

CONCRETE

BITUMEN

TUMEN

NOTES

THESE DRAWINGS ARE TO BE READ IN CONJUNCTION WITH ALL LANDSCAPE SCHEDULES AND TECHNICAL SPECIFICATION AND OTHER CONSULTANTS DRAWINGS. CHECK AND VERIFY ALL DIMENSIONS AND SITE CONDITIONS PRIOR TO THE COMMENCEMENT OF ANY WORK. DO NOT SCALE DRAWINGS - REFER TO FIGURED DIMENSIONS ONLY. INFORM OCULUS OF ANY DISCREPANCIES FOR CLARIFICATION BEFORE PROCEEDING. UNLESS NOTED OTHERWISE THIS DRAWING IS NOT FOR CONSTRUCTION.



DIAL BEFORE YOU DIG
www.1100.com.au

SERVICES SHOWN ON THIS DRAWING ARE APPROXIMATELY ONLY. THE EXACT LOCATION IS TO BE CONFIRMED ON SITE BY CONTRACTOR PRIOR TO COMMENCEMENT WORK.

FILE PATH:P:\SYDNEY\S19-023 WAVE PARK URBN SURF06. CONCEPT DESIGN\02. CAD DRAWINGS\01. SHEET SETS\OC_S19-023_000_INFORMATION.DWG; DATE PLOTTED:10/03/2021; PLOTTED BY:BRITTANY JOHNSTON

KEY PLAN

ISSUE	DATE	AMENDMENT	DRN	APRVD
A	10.03.21	ISSUE FOR S4.55	BJ	AK

OCULUS

level 1 / 5 wilson street, p.o. box 307, newtown, nsw 2042
p 02.9557.5533 australia@oculus.info
SYDNEY MELBOURNE WASHINGTON


PROJECT
URBN SURF SYDNEY
HILL ROAD, SYDNEY OLYMPIC PARK NSW

CLIENT
URBN SURF
LVL 2, 95 PITT STREET SYDNEY NSW 2000

ARCHITECT
CLARKE HOPKINS CLARKE
HOLT STREET, SURRY HILLS 2010

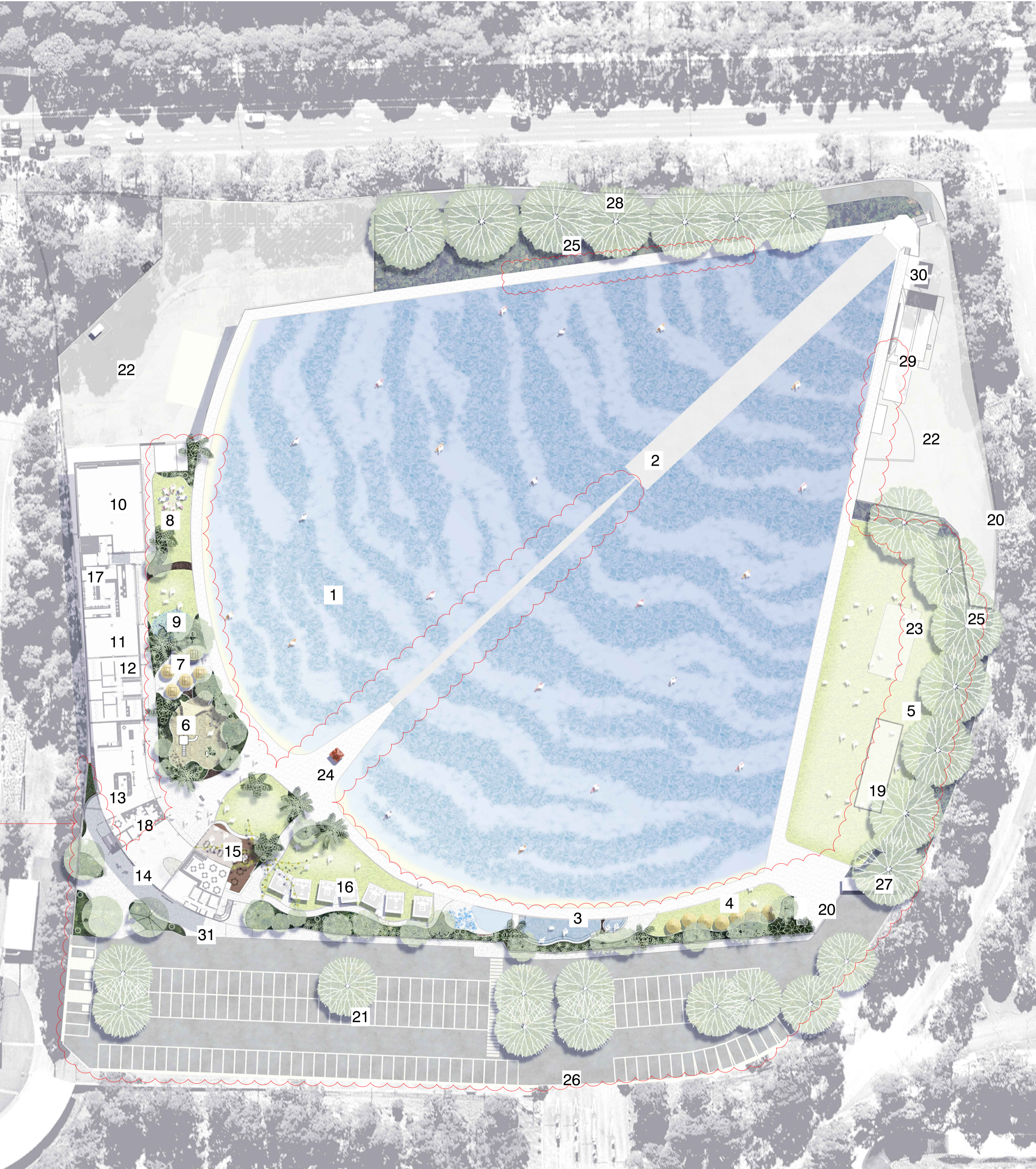
STATUS
S4.55
DEVELOPMENT APPLICATION

DRAWING SCALE
SCALE 1:500 @ A1
15 0 5 10 30m

NORTH POINT


DRAWING
TREE RETENTION AND REMOVAL PLAN

PROJECT No S19-023	SHEET SIZE A1
DRAWING No L003	ISSUE A



MAJOR LANDSCAPE CHANGES FROM PREVIOUS APPROVED DA

LEGEND

1. SURF LAGOON
2. WAVE GENERATOR
3. POOL ZONE
4. BEACH LOUNGING
5. GRASSY KNOLL
6. PLAYGROUND
7. PICNIC SPOT
8. SURF PRACTICE LAWN
9. OUTDOOR EXERCISE
10. SURF ACADEMY
11. RENTAL
12. AMENITIES
13. RETAIL + EXIT
14. ENTRANCE COURTYARD
15. OUTDOOR DINING
16. CABANAS FOR HIRE
17. FIRST AID
18. OFFICE + TICKETS
19. WAVE SKATE RAMP
20. VEHICLE ACCESS
21. CARPARK (159 SPACES)
22. SERVICE YARD
23. POTENTIAL VOLLEYBALL COURT
24. LIFEGUARD TOWER
25. NATIVE BATTER PLANTING
26. CARPARK ENTRY
27. EVENTS SWITCHBOARD
28. SMALL VEHICLE ACCESS
29. E-HOUSES + TRANSFORMER
30. WATER TREATMENT
31. F+B LOADING ZONE



Department of Planning
and Environment

Issued under the Environmental Planning and Assessment Act 1979
Approved Section 4.55 (2) Modification Application
No: SSD 7942 MOD 1
Granted on 15 February 2022
Signed: R.R.
Sheet No: 5 of 19

NOTES

THESE DRAWINGS ARE TO BE READ IN CONJUNCTION WITH ALL LANDSCAPE SCHEDULES AND TECHNICAL SPECIFICATION AND OTHER CONSULTANTS DRAWINGS. CHECK AND VERIFY ALL DIMENSIONS AND SITE CONDITIONS PRIOR TO THE COMMENCEMENT OF ANY WORK. DO NOT SCALE DRAWINGS - REFER TO FIGURED DIMENSIONS ONLY. INFORM OCULUS OF ANY DISCREPANCIES FOR CLARIFICATION BEFORE PROCEEDING. UNLESS NOTED OTHERWISE THIS DRAWING IS NOT FOR CONSTRUCTION.



SERVICES SHOWN ON THIS DRAWING ARE APPROXIMATELY ONLY. THE EXACT LOCATION IS TO BE CONFIRMED ON SITE BY CONTRACTOR PRIOR TO COMMENCEMENT WORK.

KEY PLAN

ISSUE	DATE	AMENDMENT	DRN	APRVD
A	08.04.21	ISSUE FOR \$4.55	RB	AK
B	03.08.21	ISSUE FOR \$4.55	RB	AK
C	29.10.21	ISSUE FOR \$4.55	BJ	AK

OCULUS

level 1 / 5 wilson street, p.o. box 307, newtown, nsw 2042
p 02.9557.5533 australia@oculus.info
SYDNEY MELBOURNE WASHINGTON

PROJECT
URBN SURF SYDNEY
HILL ROAD, SYDNEY OLYMPIC PARK NSW
CLIENT
URBN SURF
LVL 2, 95 PITT STREET SYDNEY NSW 2000
ARCHITECT
CLARKE HOPKINS CLARKE
HOLT STREET, SURRY HILLS 2010

STATUS
\$4.55
DEVELOPMENT APPLICATION

DRAWING SCALE
SCALE 1:500 @ A1
15 0 5 10 30m



DRAWING
ILLUSTRATIVE MASTERPLAN
PROJECT No
\$19-023
DRAWING No
L004
SHEET SIZE
A1
ISSUE
C

L203

HILL ROAD

L204

HOLKER BUSWAY

L201

L202

MAJOR LANDSCAPE CHANGES FROM PREVIOUS APPROVED DA



Department of Planning
and Environment

Issued under the Environmental Planning and Assessment Act 1979

Approved Section 4.55 (2) Modification Application

No: SSD 7942 MOD 1

Granted on 15 February 2022

Signed: R.R.

Sheet No: 6 of 19

NOTES

THESE DRAWINGS ARE TO BE READ IN CONJUNCTION WITH ALL LANDSCAPE SCHEDULES AND TECHNICAL SPECIFICATION AND OTHER CONSULTANTS DRAWINGS. CHECK AND VERIFY ALL DIMENSIONS AND SITE CONDITIONS PRIOR TO THE COMMENCEMENT OF ANY WORK. DO NOT SCALE DRAWINGS - REFER TO FIGURED DIMENSIONS ONLY. INFORM OCULUS OF ANY DISCREPANCIES FOR CLARIFICATION BEFORE PROCEEDING. UNLESS NOTED OTHERWISE THIS DRAWING IS NOT FOR CONSTRUCTION.

© OCULUS 2019 All rights reserved



SERVICES SHOWN ON THIS DRAWING ARE APPROXIMATELY ONLY. THE EXACT LOCATION IS TO BE CONFIRMED ON SITE BY CONTRACTOR PRIOR TO COMMENCEMENT WORK.

FILE PATH: P:\SYDNEY\S19-023 WAVE PARK URBAN SURF\06. CONCEPT DESIGN\02. CAD DRAWINGS\01. SHEET SETS\OC_S19-023_200_SURFACES FINISHES.DWG; DATE PLOTTED: 13/08/2021; PLOTTED BY: BRITTANY JOHNSTON

KEY PLAN

ISSUE	DATE	AMENDMENT	DRN	APPRD
A	08.04.21	ISSUE FOR S4.55	BJ	AK
B	04.08.21	ISSUE FOR S4.55	BJ	AK
C	29.10.21	ISSUE FOR S4.55	BJ	AK

OCULUS

level 1 / 5 wilson street, p.o. box 307, newtown, nsw 2042
p 02.9557.5533 australia@oculus.info
SYDNEY MELBOURNE WASHINGTON

PROJECT
URBN SURF SYDNEY
HILL ROAD, SYDNEY OLYMPIC PARK NSW

CLIENT
URBN SURF
LVL 2, 95 PITT STREET SYDNEY NSW 2000

ARCHITECT
CLARKE HOPKINS CLARKE
HOLT STREET, SURRY HILLS 2010

STATUS
S4.55
DEVELOPMENT APPLICATION

DRAWING SCALE

SCALE 1:500 @ A1
15 0 5 10 30m

NORTH POINT



DRAWING
SITE PLAN

PROJECT No
S19-023

DRAWING No
L200

SHEET SIZE
A1

ISSUE
C



REFER PAGE L203

REFER PAGE L202



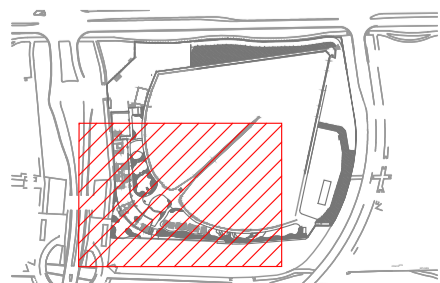
NOTES

THESE DRAWINGS ARE TO BE READ IN CONJUNCTION WITH ALL LANDSCAPE SCHEDULES AND TECHNICAL SPECIFICATION AND OTHER CONSULTANTS DRAWINGS. CHECK AND VERIFY ALL DIMENSIONS AND SITE CONDITIONS PRIOR TO THE COMMENCEMENT OF ANY WORK. DO NOT SCALE DRAWINGS - REFER TO FIGURED DIMENSIONS ONLY. INFORM OCULUS OF ANY DISCREPANCIES FOR CLARIFICATION BEFORE PROCEEDING. UNLESS NOTED OTHERWISE THIS DRAWING IS NOT FOR CONSTRUCTION.



SERVICES SHOWN ON THIS DRAWING ARE APPROXIMATELY ONLY. THE EXACT LOCATION IS TO BE CONFIRMED ON SITE BY CONTRACTOR PRIOR TO COMMENCEMENT WORK.

KEY PLAN



ISSUE	DATE	AMENDMENT	DRN	APRVD
A	10.03.21	ISSUE FOR S4.55	BJ	AK
B	04.08.21	ISSUE FOR S4.55	BJ	AK
C	29.10.21	ISSUE FOR S4.55	BJ	AK

OCULUS

level 1 / 5 wilson street, p.o. box 307, newtown, nsw 2042
p 02.9557.5533 australia@oculus.info
SYDNEY MELBOURNE WASHINGTON

PROJECT
URBN SURF SYDNEY
HILL ROAD, SYDNEY OLYMPIC PARK NSW
CLIENT
URBN SURF
LVL 2, 95 PITT STREET SYDNEY NSW 2000
ARCHITECT
CLARKE HOPKINS CLARKE
HOLT STREET, SURRY HILLS 2010

STATUS
S4.55
DEVELOPMENT APPLICATION

DRAWING SCALE

SCALE 1:200 @ A1
2 0 2 4 10m

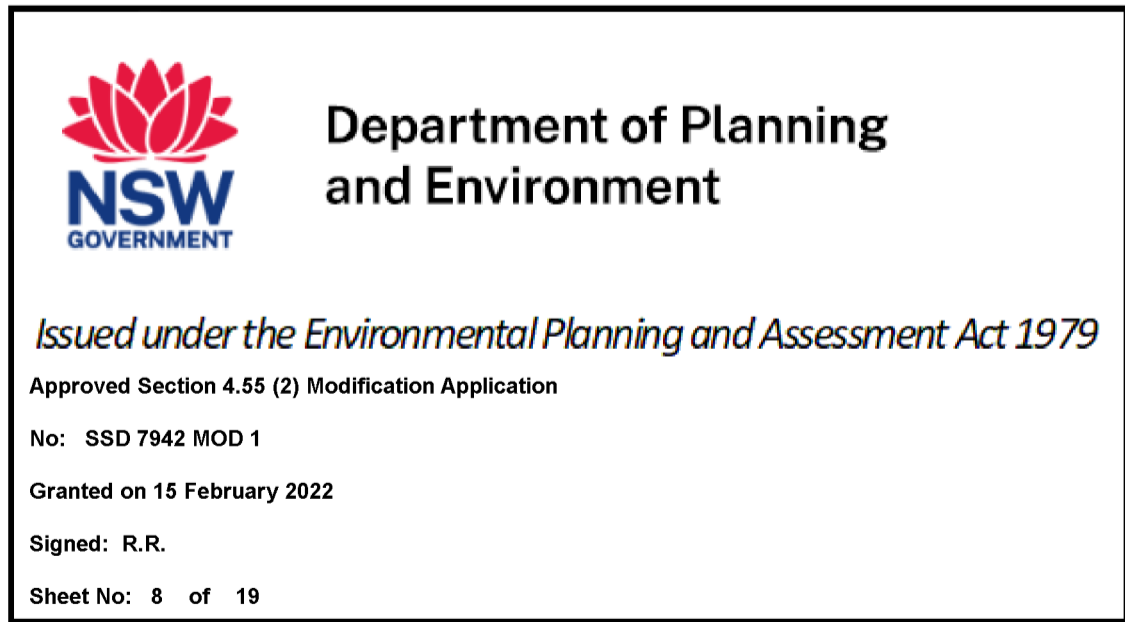
NORTH POINT



DRAWING
SURFACE FINISHES
AND MATERIALS

PROJECT No
S19-023
DRAWING No
L201

SHEET SIZE
A1
ISSUE
C



**DIAL BEFORE
YOU DIG**
www.1100.com.au

FILE PATH:P:\SYDNEY\S19-023 WAVE PARK URBN SURF\06. CONCEPT DESIGN\02. CAD DRAWINGS\01. SHEET SETS\OC S19-023 200 SURFACES FINISHES.DWG; DATE PLOTTED:13/08/2021; PLOTTED BY:BRITTANY JOHNSTON


O C U L U S

DRAWING SCALE

SCALE 1:200 @ A1

2 0 2 4 10m

NORTH POINT

A compass rose with a circle in the center. Four lines extend from the center to the top, bottom, left, and right edges of the circle, representing the cardinal directions. The top line is labeled 'NORTH POINT'.

PROJECT № S19-023	SHEET SIZE A1
DRAWING № L202	ISSUE C



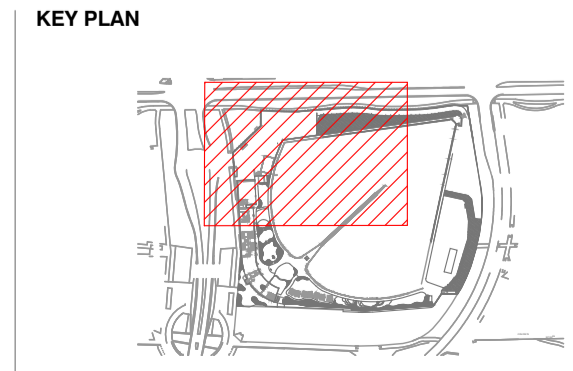
NOTES
THESE DRAWINGS ARE TO BE READ IN CONJUNCTION WITH ALL LANDSCAPE SCHEDULES AND TECHNICAL SPECIFICATION AND OTHER CONSULTANTS DRAWINGS. CHECK AND VERIFY ALL DIMENSIONS AND SITE CONDITIONS PRIOR TO THE COMMENCEMENT OF ANY WORK. DO NOT SCALE DRAWINGS - REFER TO FIGURED DIMENSIONS ONLY. INFORM OCULUS OF ANY DISCREPANCIES FOR CLARIFICATION BEFORE PROCEEDING. UNLESS NOTED OTHERWISE THIS DRAWING IS NOT FOR CONSTRUCTION.

© OCULUS 2019 All rights reserved

DIAL BEFORE YOU DIG
www.1100.com.au

SERVICES SHOWN ON THIS DRAWING ARE APPROXIMATELY ONLY. THE EXACT LOCATION IS TO BE CONFIRMED ON SITE BY CONTRACTOR PRIOR TO COMMENCEMENT WORK.

FILE PATH: P:\SYDNEY\S19-023 WAVE PARK URBN SURF.06. CONCEPT DESIGN\02. CAD DRAWINGS\01. SHEET SETS\OC_S19-023_200_SURFACES FINISHES.DWG; DATE PLOTTED: 13/08/2021; PLOTTED BY: BRITTANY JOHNSTON



ISSUE	DATE	AMENDMENT	DRN	APRVD
A	10.03.21	ISSUE FOR S4.55	BJ	AK
B	04.08.21	ISSUE FOR S4.55	BJ	AK
C	29.10.21	ISSUE FOR S4.55	BJ	AK

OCULUS
level 1 / 5 wilson street, p.o. box 307, newtown, nsw 2042
p 02.9557.5533 australia@oculus.info
SYDNEY MELBOURNE WASHINGTON

PROJECT
URBN SURF SYDNEY
HILL ROAD, SYDNEY OLYMPIC PARK NSW

CLIENT
URBN SURF
LVL 2, 95 PITT STREET SYDNEY NSW 2000

ARCHITECT
CLARKE HOPKINS CLARKE
HOLT STREET, SURRY HILLS 2010

STATUS
S4.55
DEVELOPMENT APPLICATION

DRAWING SCALE
SCALE 1:200 @ A1
2 0 2 4 10m

NORTH POINT

DRAWING	SHEET SIZE
SURFACE FINISHES AND MATERIALS	A1
PROJECT No S19-023	ISSUE C
DRAWING No L203	

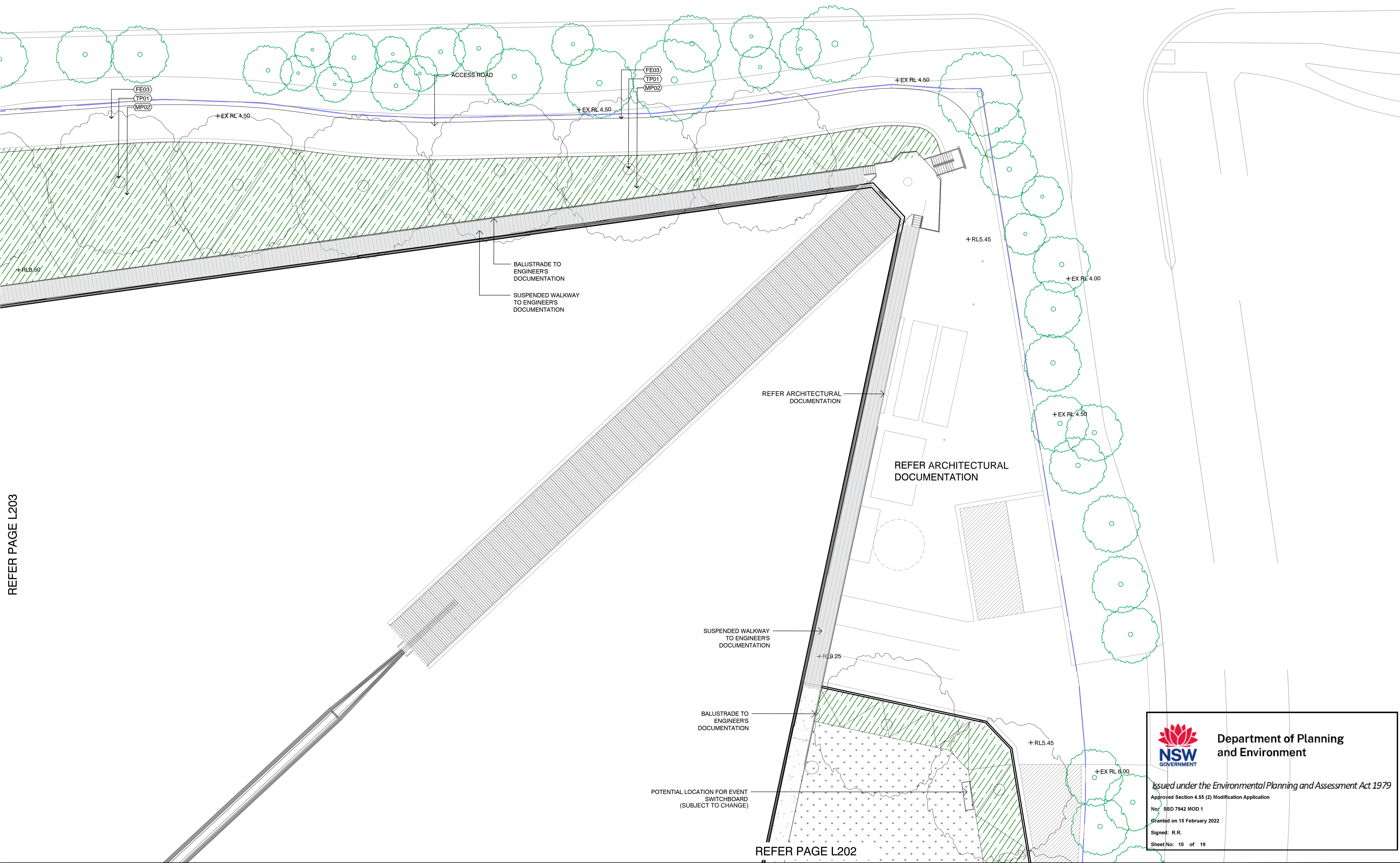
Department of Planning and Environment


Issued under the Environmental Planning and Assessment Act 1979
Approved Section 4.56 (2) Modification Application
No: SSD 7942 MOD 1
Granted on 15 February 2022
Signed: R.R.
Sheet No: 9 of 19

REFER PAGE L204

REFER PAGE L201

REFER PAGE L203





NSW
GOVERNMENT

Department of Planning and Environment

Issued under the Environmental Planning and Assessment Act 1979

Approved Section 4.55 (2) Modification Application

No: SSD 7942 MOD 1

Granted on 15 February 2022

Signed: R.R.

Sheet No: 10 of 19

NOTES

THESE DRAWINGS ARE TO BE READ IN CONJUNCTION WITH ALL LANDSCAPE SCHEDULES AND TECHNICAL SPECIFICATION AND OTHER CONSULTANTS DRAWINGS. CHECK AND VERIFY ALL DIMENSIONS AND SITE CONDITIONS PRIOR TO THE COMMENCEMENT OF ANY WORK. DO NOT SCALE DRAWINGS - REFER TO FIGURED DIMENSIONS ONLY. INFORM OCULUS OF ANY DISCREPANCIES FOR CLARIFICATION BEFORE PROCEEDING. UNLESS NOTED OTHERWISE THIS DRAWING IS NOT FOR CONSTRUCTION.

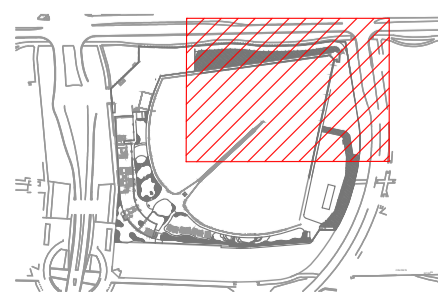
© OCULUS 2019 All rights reserved.

 **DIAL BEFORE
YOU DIG**
www.1100.com.au

SERVICES SHOWN ON THIS DRAWING ARE APPROXIMATELY ONLY. THE EXACT LOCATION IS TO BE CONFIRMED ON SITE BY CONTRACTOR PRIOR TO COMMENCEMENT WORK.

FILE PATH:P:\SYDNEY\S19-023 WAVE PARK URBN SURF\06. CONCEPT DESIGN\02. CAD DRAWINGS\01. SHEET SETS\OC S19-023 200 SURFACES FINISHES.DWG; DATE PLOTTED:13/08/2021; PLOTTED BY:BRITTANY JOHNSTON

KEY PLAN



ISSUE	DATE	AMENDMENT	DRN	APPRVD
A	10.03.21	ISSUE FOR \$4.55	BJ	AK
B	04.08.21	ISSUE FOR \$4.55	BJ	AK
C	29.10.21	ISSUE FOR \$4.55	BJ	AK

O C U L U S

level 1 / 5 wilson street, p.o. box 307, newtown, nsw 2042
p 02.9557.5533 australia@oculus.info
SYDNEY **MELBOURNE** **WASHINGTON**

PROJECT

URBN SURF SYDNEY
HILL ROAD, SYDNEY OLYMPIC PARK NSW

CLIENT

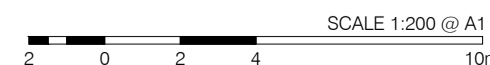
URBN SURF
LVL 2, 95 PITT STREET SYDNEY NSW 2000

ARCHITECT

CLARKE HOPKINS CLARKE
HOLT STREET, SURRY HILLS 2010

STATUS
S4.55
DEVELOPMENT APPLICATION

DRAWING SCALE



NORTH POINT



DRAWING

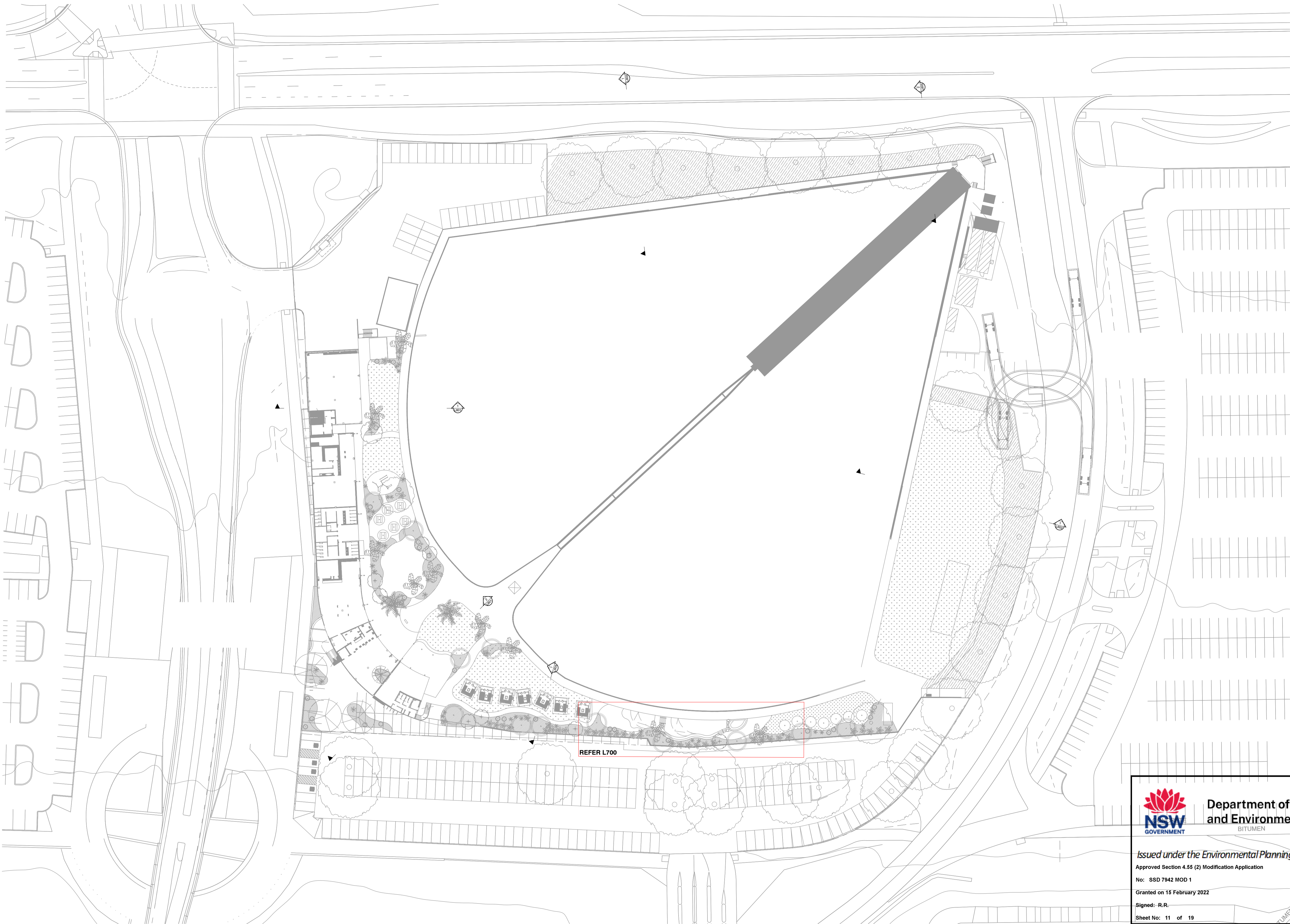
SURFACE FINISHES AND MATERIALS


PROJECT No.
S19-023

DRAWING No.
L204

SHEET SIZE
A1

ISSUE
C





Department of Planning
and Environment
BITUMEN

Issued under the Environmental Planning and Assessment Act 1979

Approved Section 4.55 (2) Modification Application

No: SSD 7942 MOD 1

Granted on 15 February 2022

Signed: R.R.

Sheet No: 11 of 19

NOTES

THESE DRAWINGS ARE TO BE READ IN CONJUNCTION WITH ALL LANDSCAPE SCHEDULES AND TECHNICAL SPECIFICATION AND OTHER CONSULTANTS DRAWINGS. CHECK AND VERIFY ALL DIMENSIONS AND SITE CONDITIONS PRIOR TO THE COMMENCEMENT OF ANY WORK. DO NOT SCALE DRAWINGS - REFER TO FIGURED DIMENSIONS ONLY. INFORM OCULUS OF ANY DISCREPANCIES FOR CLARIFICATION BEFORE PROCEEDING. UNLESS NOTED OTHERWISE THIS DRAWING IS NOT FOR CONSTRUCTION.



SERVICES SHOWN ON THIS DRAWING ARE APPROXIMATELY ONLY. THE EXACT LOCATION IS TO BE CONFIRMED ON SITE BY CONTRACTOR PRIOR TO COMMENCEMENT WORK.

FOR SECTION LOCATION
INFORMATION ONLY

KEY PLAN

ISSUE	DATE	AMENDMENT	DRN	APRVD
A	10.03.21	ISSUE FOR S4.55	RB	AK
B	29.10.21	ISSUE FOR S4.55	BJ	AK

OCULUS

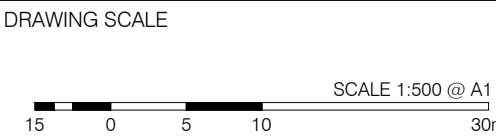
level 1 / 5 wilson street, p.o. box 307, newtown, nsw 2042
p 02.9557.5533 australia@oculus.info
SYDNEY MELBOURNE WASHINGTON

PROJECT
URBN SURF SYDNEY
HILL ROAD, SYDNEY OLYMPIC PARK NSW

CLIENT
URBN SURF
LVL 2, 95 PITT STREET SYDNEY NSW 2000

ARCHITECT
CLARKE HOPKINS CLARKE
HOLT STREET, SURRY HILLS 2010

STATUS
S4.55
DEVELOPMENT APPLICATION



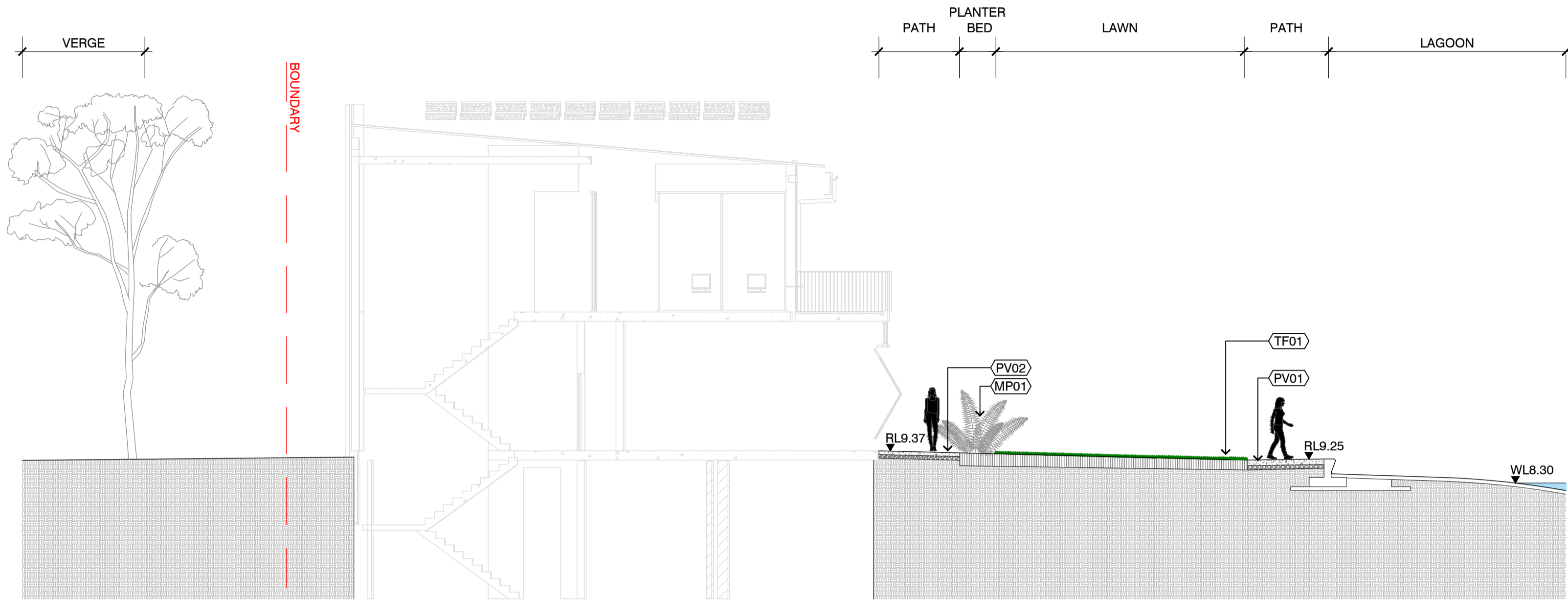
DRAWING
SECTIONS & ELEVATIONS
SECTION LOCATION PLAN

PROJECT No
S19-023

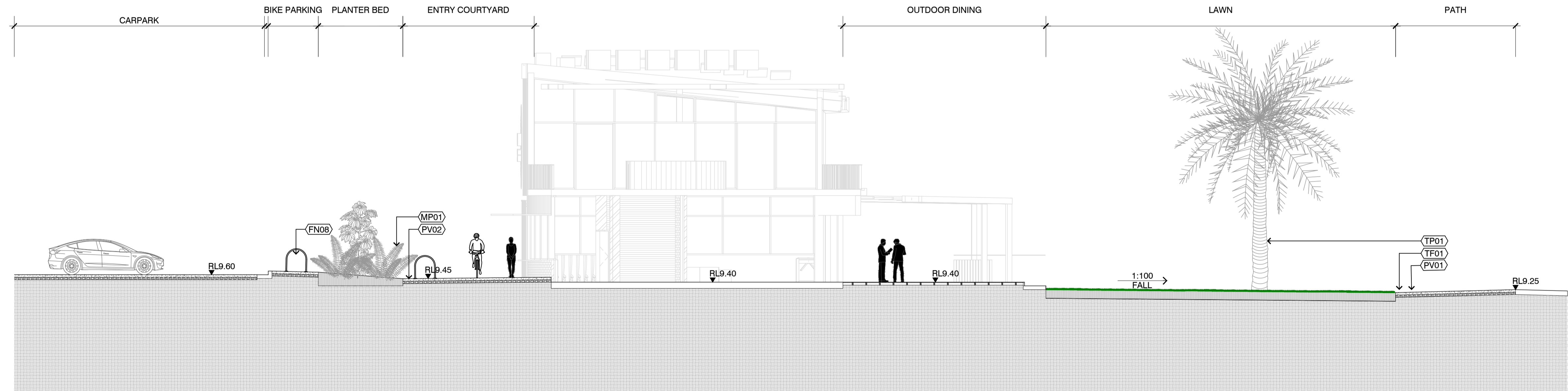
DRAWING No
L600

SHEET SIZE
A1


ISSUE
B



1 SECTION THROUGH SURF PRACTICE LAWN
SCALE 1:100



2 SECTION THROUGH ENTRANCE COURTYARD
SCALE 1:100



Department of Planning
and Environment

Issued under the Environmental Planning and Assessment Act 1979

Approved Section 4.55 (2) Modification Application

No: SSD 7942 MOD 1

Granted on 15 February 2022

Signed: R.R.

Sheet No: 12 of 19

NOTES

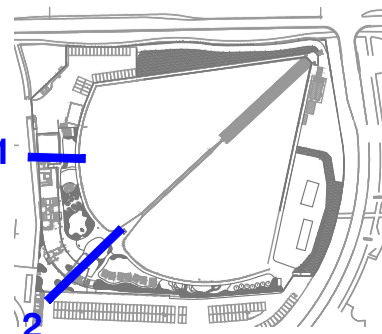
THESE DRAWINGS ARE TO BE READ IN CONJUNCTION WITH ALL LANDSCAPE SCHEDULES AND TECHNICAL SPECIFICATION AND OTHER CONSULTANTS DRAWINGS. CHECK AND VERIFY ALL DIMENSIONS AND SITE CONDITIONS PRIOR TO THE COMMENCEMENT OF ANY WORK. DO NOT SCALE DRAWINGS - REFER TO FIGURED DIMENSIONS ONLY. INFORM OCULUS OF ANY DISCREPANCIES FOR CLARIFICATION BEFORE PROCEEDING. UNLESS NOTED OTHERWISE THIS DRAWING IS NOT FOR CONSTRUCTION.



SERVICES SHOWN ON THIS DRAWING ARE APPROXIMATELY ONLY. THE EXACT LOCATION IS TO BE CONFIRMED ON SITE BY CONTRACTOR PRIOR TO COMMENCEMENT WORK.

INDICATIVE SECTION DETAILS FOR CONTEXT

KEY PLAN



ISSUE	DATE	AMENDMENT	DRN	APRVD
A	10.03.21	ISSUE FOR S4.55	RB	AK
B	29.10.21	ISSUE FOR S4.55	BJ	AK

OCULUS

level 1 / 5 wilson street, p.o. box 307, newtown, nsw 2042
p 02.9557.5533 australia@oculus.info
SYDNEY MELBOURNE WASHINGTON

PROJECT
URBN SURF SYDNEY
HILL ROAD, SYDNEY OLYMPIC PARK NSW

CLIENT
URBN SURF
LVL 2, 95 PITT STREET SYDNEY NSW 2000

ARCHITECT
CLARKE HOPKINS CLARKE
HOLT STREET, SURRY HILLS 2010

STATUS
S4.55
DEVELOPMENT APPLICATION

DRAWING SCALE
SCALE 1:100 @ A1
1 0 1 2 5m

NORTH POINT

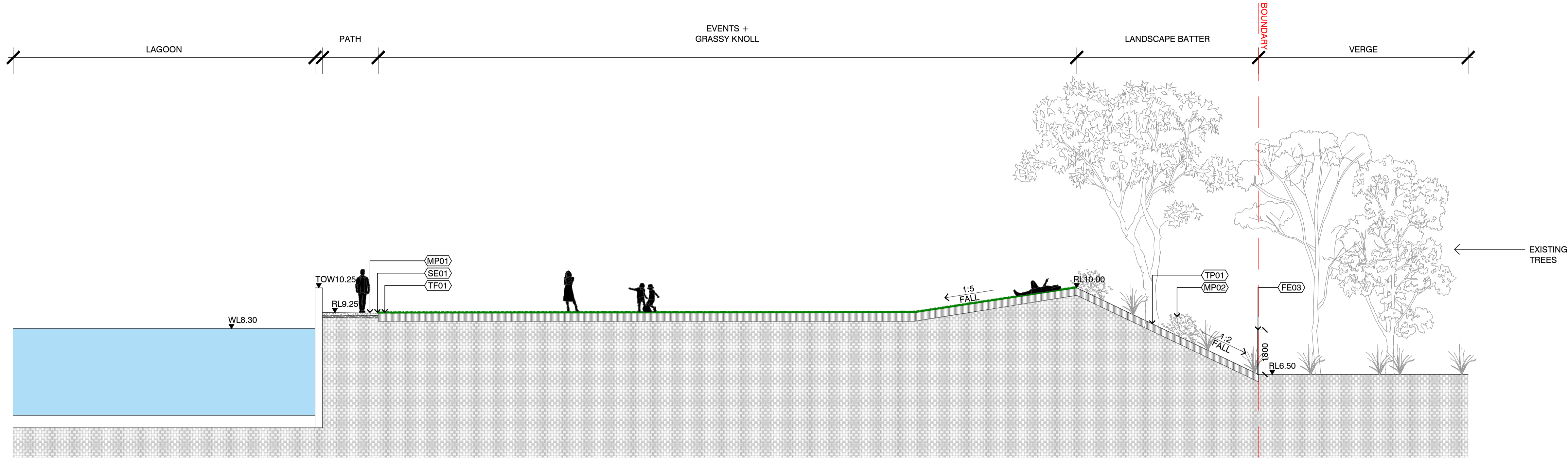
DRAWING
SECTIONS & ELEVATIONS
A + B

PROJECT No
S19-023

DRAWING No
L601

SHEET SIZE
A1

ISSUE
B



1 SECTION THROUGH GRASSY KNOLL
SCALE 1:100



Department of Planning
and Environment

Issued under the Environmental Planning and Assessment Act 1979

Approved Section 4.55 (2) Modification Application

No: SSD 7942 MOD 1

Granted on 15 February 2022

Signed: R.R.

Sheet No: 13 of 19

NOTES

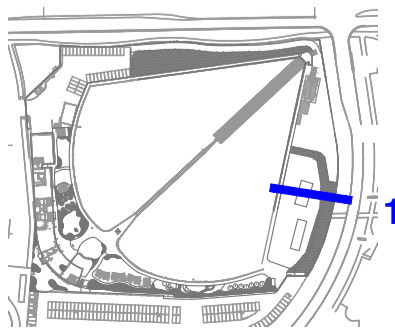
THESE DRAWINGS ARE TO BE READ IN CONJUNCTION WITH ALL LANDSCAPE SCHEDULES AND TECHNICAL SPECIFICATION AND OTHER CONSULTANTS DRAWINGS. CHECK AND VERIFY ALL DIMENSIONS AND SITE CONDITIONS PRIOR TO THE COMMENCEMENT OF ANY WORK. DO NOT SCALE DRAWINGS - REFER TO FIGURED DIMENSIONS ONLY. INFORM OCULUS OF ANY DISCREPANCIES FOR CLARIFICATION BEFORE PROCEEDING. UNLESS NOTED OTHERWISE THIS DRAWING IS NOT FOR CONSTRUCTION.



SERVICES SHOWN ON THIS DRAWING ARE APPROXIMATELY ONLY. THE EXACT LOCATION IS TO BE CONFIRMED ON SITE BY CONTRACTOR PRIOR TO COMMENCEMENT WORK.

INDICATIVE SECTION DETAILS
FOR CONTEXT

KEY PLAN



ISSUE	DATE	AMENDMENT	DRN	APRVD
A	10.03.21	ISSUE FOR S4.55	RB	AK
B	29.10.21	ISSUE FOR S4.55	BJ	AK

OCULUS

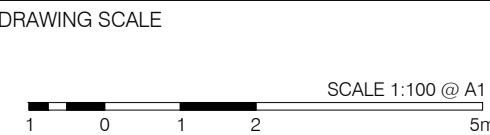
level 1 / 5 wilson street, p.o. box 307, newtown, nsw 2042
p 02.9557.5533 australia@oculus.info
SYDNEY MELBOURNE WASHINGTON

PROJECT
URBN SURF SYDNEY
HILL ROAD, SYDNEY OLYMPIC PARK NSW

CLIENT
URBN SURF
LVL 2, 95 PITT STREET SYDNEY NSW 2000

ARCHITECT
CLARKE HOPKINS CLARKE
HOLT STREET, SURRY HILLS 2010

STATUS
S4.55
DEVELOPMENT APPLICATION



NORTH POINT

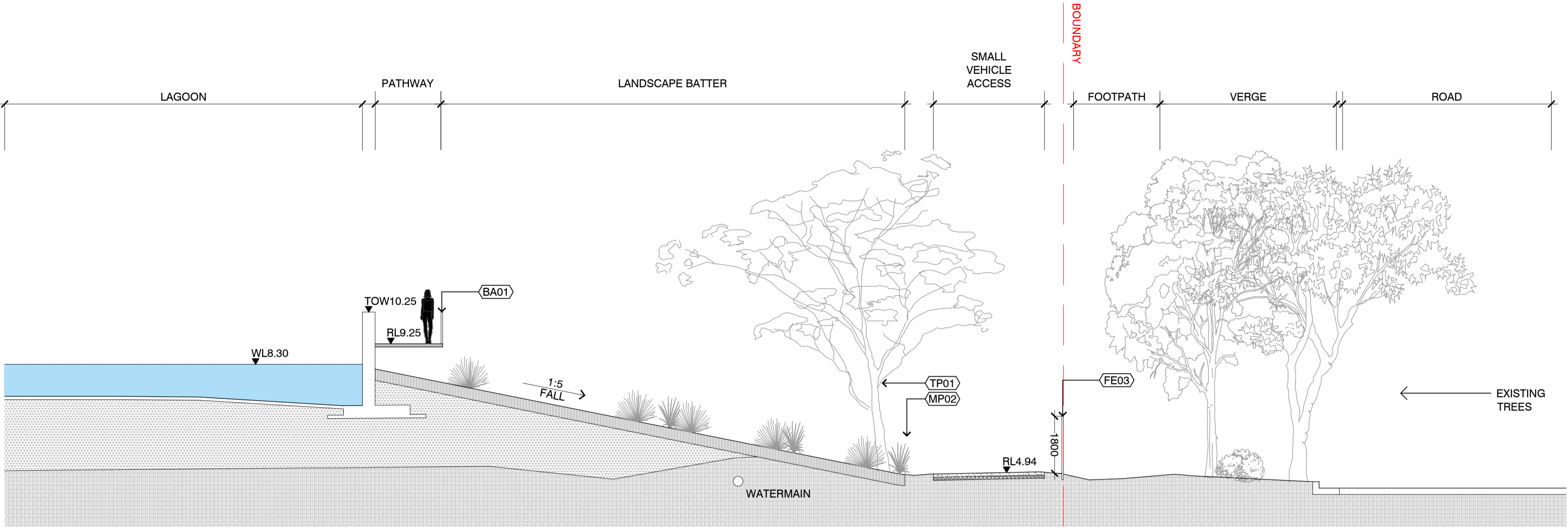
DRAWING
SECTIONS & ELEVATIONS
C + D

PROJECT №
S19-023

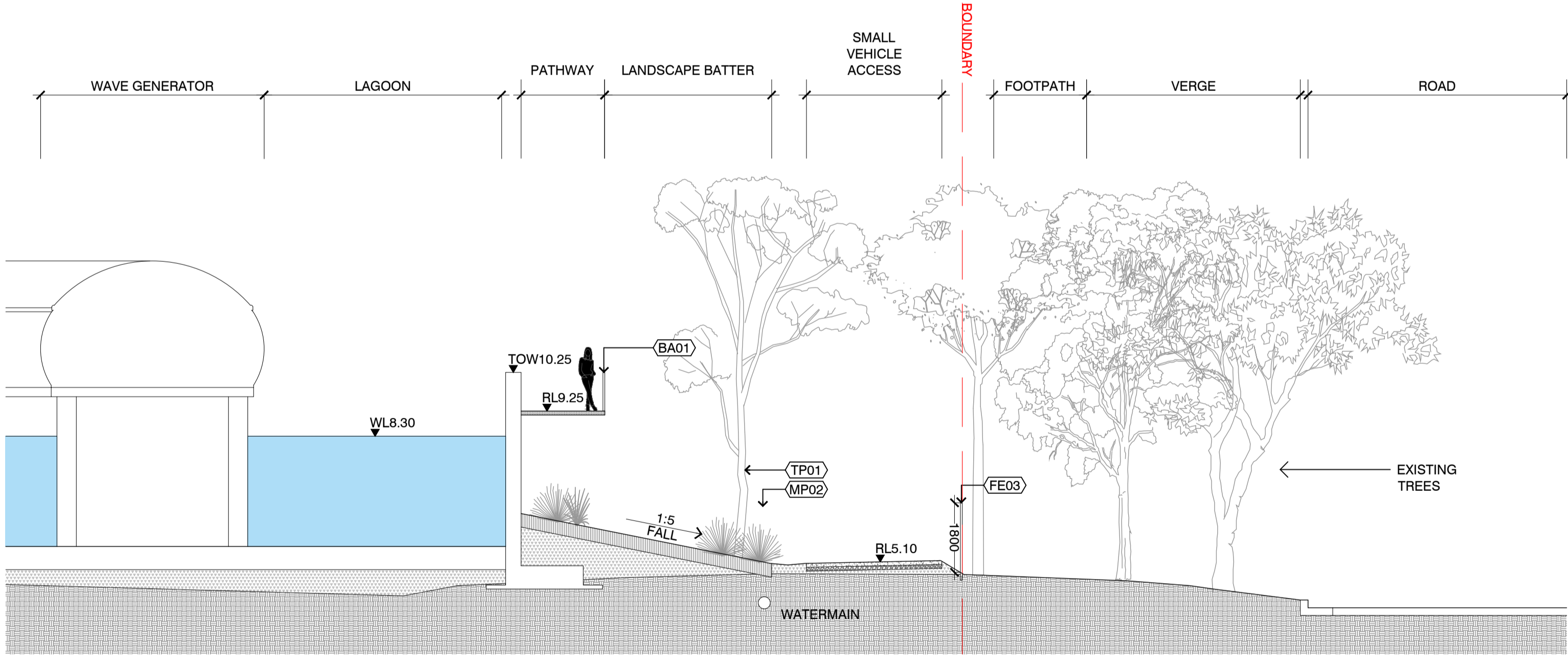
DRAWING №
L602

SHEET SIZE
A1


ISSUE
B



1 SECTION THROUGH NATIVE BATTER
SCALE 1:100



2 SECTION THROUGH NATIVE BATTER
SCALE 1:100



Department of Planning
and Environment

Issued under the Environmental Planning and Assessment Act 1979

Approved Section 4.55 (2) Modification Application

No: SSD 7842 MOD 1


Granted on 15 February 2022

Signed: R.R.

Sheet No: 14 of 19

NOTES

THESE DRAWINGS ARE TO BE READ IN CONJUNCTION WITH ALL LANDSCAPE SCHEDULES AND TECHNICAL SPECIFICATION AND OTHER CONSULTANTS DRAWINGS. CHECK AND VERIFY ALL DIMENSIONS AND SITE CONDITIONS PRIOR TO THE COMMENCEMENT OF ANY WORK. DO NOT SCALE DRAWINGS - REFER TO FIGURED DIMENSIONS ONLY. INFORM OCULUS OF ANY DISCREPANCIES FOR CLARIFICATION BEFORE PROCEEDING. UNLESS NOTED OTHERWISE THIS DRAWING IS NOT FOR CONSTRUCTION.

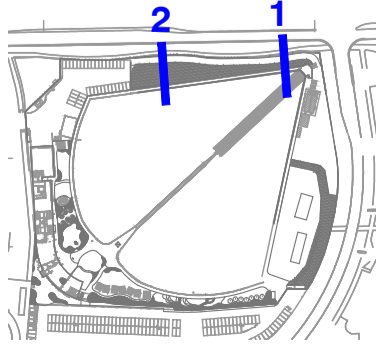


© OCULUS 2019 All rights reserved

SERVICES SHOWN ON THIS DRAWING ARE APPROXIMATELY ONLY. THE EXACT LOCATION IS TO BE CONFIRMED ON SITE BY CONTRACTOR PRIOR TO COMMENCEMENT WORK.

INDICATIVE SECTION DETAILS FOR CONTEXT

KEY PLAN



ISSUE	DATE	AMENDMENT	DRN	APPRD
A	10.03.21	ISSUE FOR S4.55	RB	AK
B	29.10.21	ISSUE FOR S4.55	BJ	AK

OCULUS

level 1 / 5 wilson street, p.o. box 307, newtown, nsw 2042
p 02.9557.5533 australia@oculus.info
SYDNEY MELBOURNE WASHINGTON

PROJECT
URBN SURF SYDNEY
HILL ROAD, SYDNEY OLYMPIC PARK NSW

CLIENT
URBN SURF
LVL 2, 95 PITT STREET SYDNEY NSW 2000

ARCHITECT
CLARKE HOPKINS CLARKE
HOLT STREET, SURRY HILLS 2010

STATUS
S4.55
DEVELOPMENT APPLICATION

DRAWING SCALE

NORTH POINT

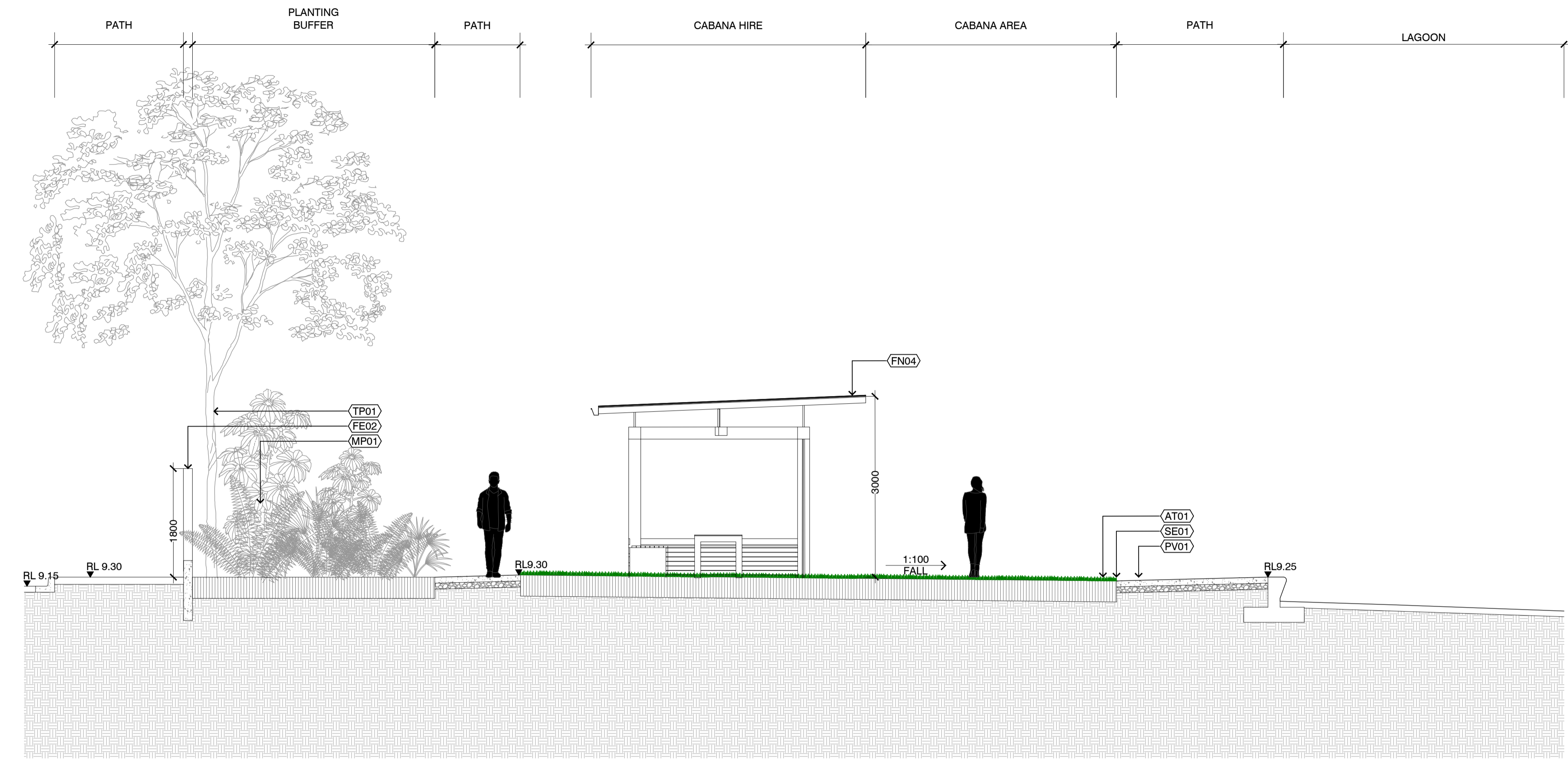
DRAWING
SECTIONS & ELEVATIONS
E + F

PROJECT N°
S19-023

DRAWING N°
L603

SHEET SIZE
A1

ISSUE
B



1 SECTION THROUGH CABANA LAWN
SCALE 1:50



Department of Planning
and Environment

Issued under the Environmental Planning and Assessment Act 1979

Approved Section 4.55 (2) Modification Application

No: SSD 7942 MOD 1

Granted on 15 February 2022

Signed: R.R.

Sheet No: 15 of 19

NOTES

THESE DRAWINGS ARE TO BE READ IN CONJUNCTION WITH ALL LANDSCAPE SCHEDULES AND TECHNICAL SPECIFICATION AND OTHER CONSULTANTS DRAWINGS. CHECK AND VERIFY ALL DIMENSIONS AND SITE CONDITIONS PRIOR TO THE COMMENCEMENT OF ANY WORK. DO NOT SCALE DRAWINGS - REFER TO FIGURED DIMENSIONS ONLY. INFORM OCULUS OF ANY DISCREPANCIES FOR CLARIFICATION BEFORE PROCEEDING. UNLESS NOTED OTHERWISE THIS DRAWING IS NOT FOR CONSTRUCTION.

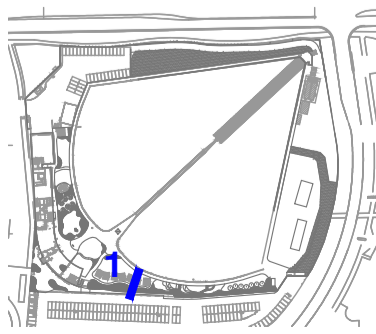
© OCULUS 2019 All rights reserved



SERVICES SHOWN ON THIS DRAWING ARE APPROXIMATELY ONLY. THE EXACT LOCATION IS TO BE CONFIRMED ON SITE BY CONTRACTOR PRIOR TO COMMENCEMENT WORK.

INDICATIVE SECTION DETAILS
FOR CONTEXT

KEY PLAN



ISSUE	DATE	AMENDMENT	DRN	APRVD
A	10.03.21	ISSUE FOR S4.55	RB	AK
B	29.10.21	ISSUE FOR S4.55	BJ	AK

OCULUS

level 1 / 5 wilson street, p.o. box 307, newtown, nsw 2042
p 02.9557.5533 australia@oculus.info
SYDNEY MELBOURNE WASHINGTON

PROJECT
URBN SURF SYDNEY
HILL ROAD, SYDNEY OLYMPIC PARK NSW

CLIENT
URBN SURF
LVL 2, 95 PITT STREET SYDNEY NSW 2000

ARCHITECT
CLARKE HOPKINS CLARKE
HOLT STREET, SURRY HILLS 2010

STATUS
S4.55
DEVELOPMENT APPLICATION

DRAWING SCALE
SCALE 1:50 @ A1
0.5 0 0.5 1 2.5m

NORTH POINT

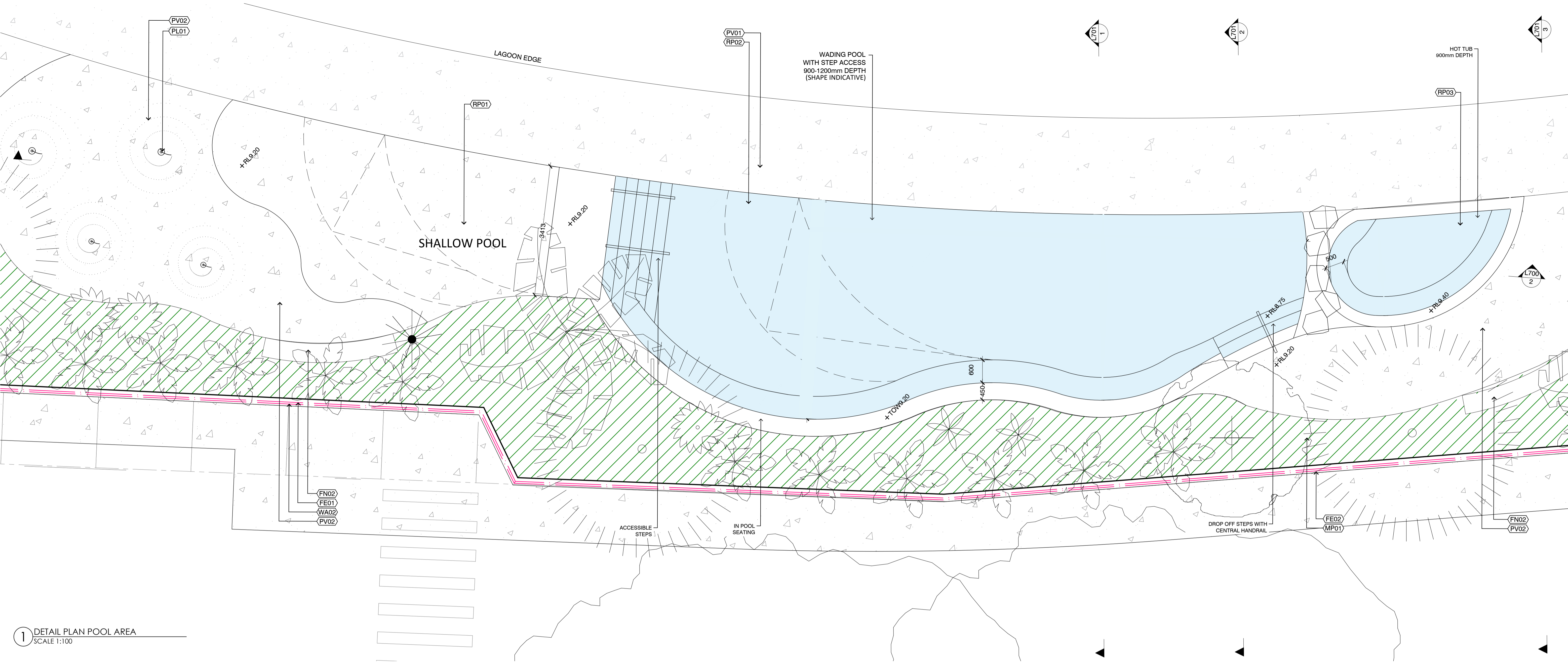
DRAWING
SECTIONS & ELEVATIONS
K + L

PROJECT №
S19-023

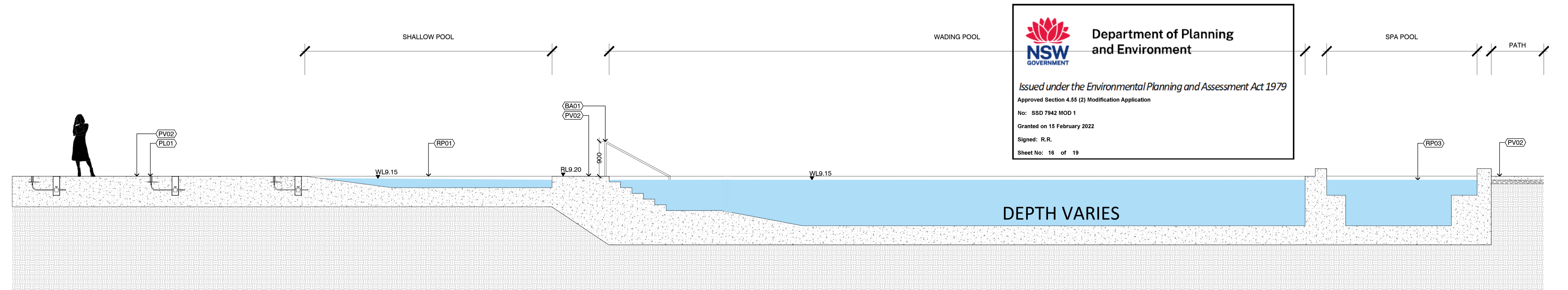
DRAWING №
L604

SHEET SIZE
A1

ISSUE
B



1 DETAIL PLAN POOL AREA
SCALE 1:100



2 SECTION THROUGH ROCK POOLS
SCALE 1:50

NOTES

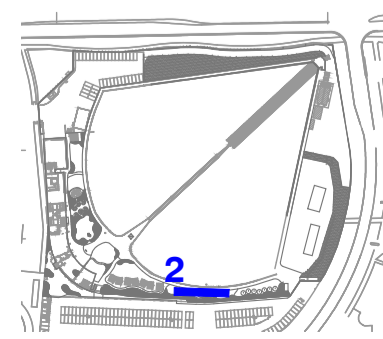
THESE DRAWINGS ARE TO BE READ IN CONJUNCTION WITH ALL LANDSCAPE SCHEDULES AND TECHNICAL SPECIFICATION AND OTHER CONSULTANTS DRAWINGS. CHECK AND VERIFY ALL DIMENSIONS AND SITE CONDITIONS PRIOR TO THE COMMENCEMENT OF ANY WORK. DO NOT SCALE DRAWINGS - REFER TO FIGURED DIMENSIONS ONLY. INFORM OCULUS OF ANY DISCREPANCIES FOR CLARIFICATION BEFORE PROCEEDING. UNLESS NOTED OTHERWISE THIS DRAWING IS NOT FOR CONSTRUCTION.



SERVICES SHOWN ON THIS DRAWING ARE APPROXIMATELY ONLY. THE EXACT LOCATION IS TO BE CONFIRMED ON SITE BY CONTRACTOR PRIOR TO COMMENCEMENT WORK.

INDICATIVE SECTION DETAILS FOR CONTEXT

KEY PLAN



ISSUE	DATE	AMENDMENT	DRN	APRVD
A	10.03.21	ISSUE FOR S4.55	RB	AK
B	04.08.21	ISSUE FOR S4.55	BJ	AK
C	29.10.21	ISSUE FOR S4.55	BJ	AK

OCULUS

level 1 / 5 wilson street, p.o. box 307, newtown, nsw 2042
p 02.9557.5533 australia@oculus.info
SYDNEY MELBOURNE WASHINGTON

PROJECT
URBN SURF SYDNEY
HILL ROAD, SYDNEY OLYMPIC PARK NSW

CLIENT
URBN SURF
LVL 2, 95 PITT STREET SYDNEY NSW 2000

ARCHITECT
CLARKE HOPKINS CLARKE
HOLT STREET, SURRY HILLS 2010

STATUS
S4.55
DEVELOPMENT APPLICATION

DRAWING SCALE

NORTH POINT

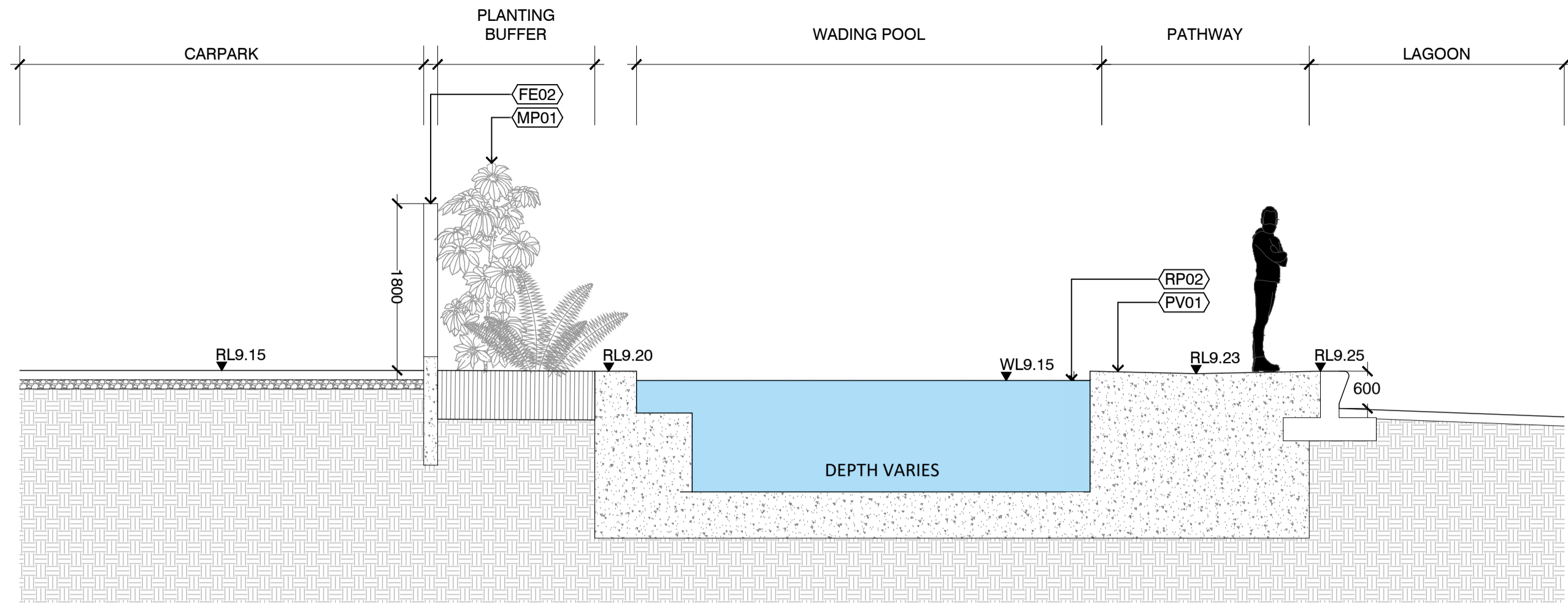
DRAWING SECTIONS & ELEVATIONS K + L

PROJECT N°
S19-023

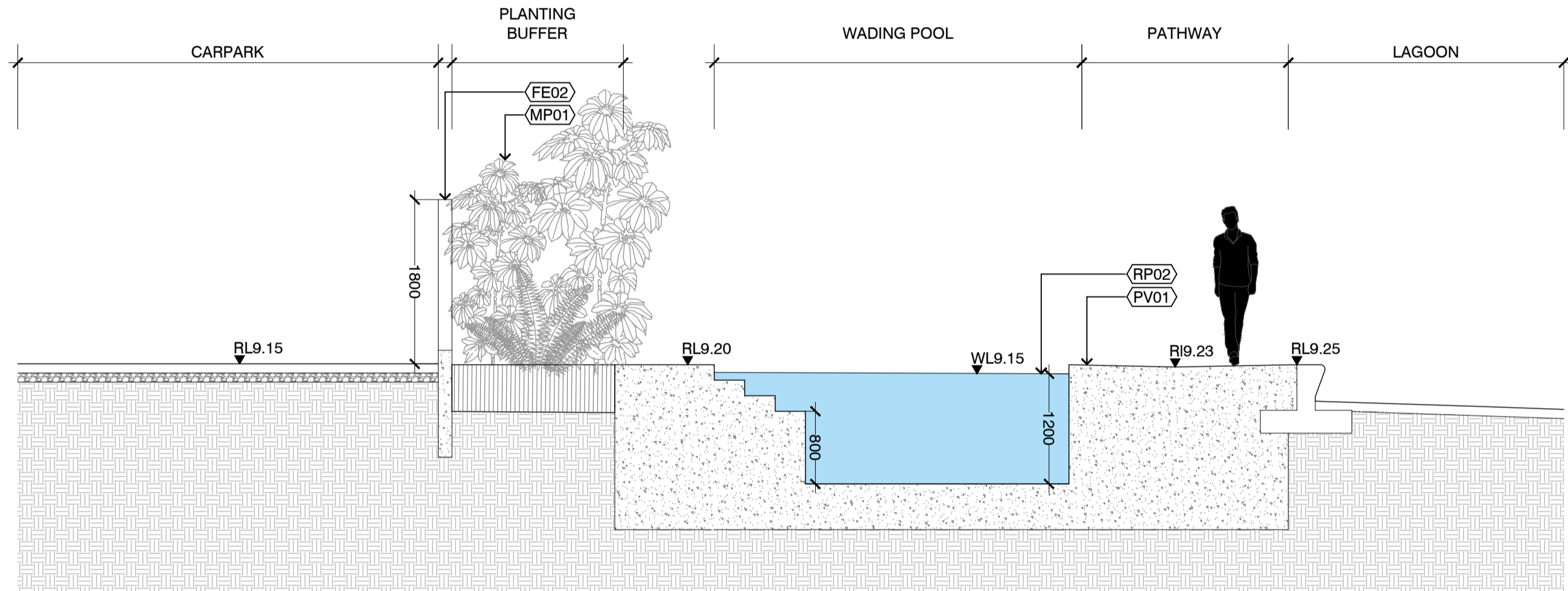
DRAWING N°
L700

SHEET SIZE
A1

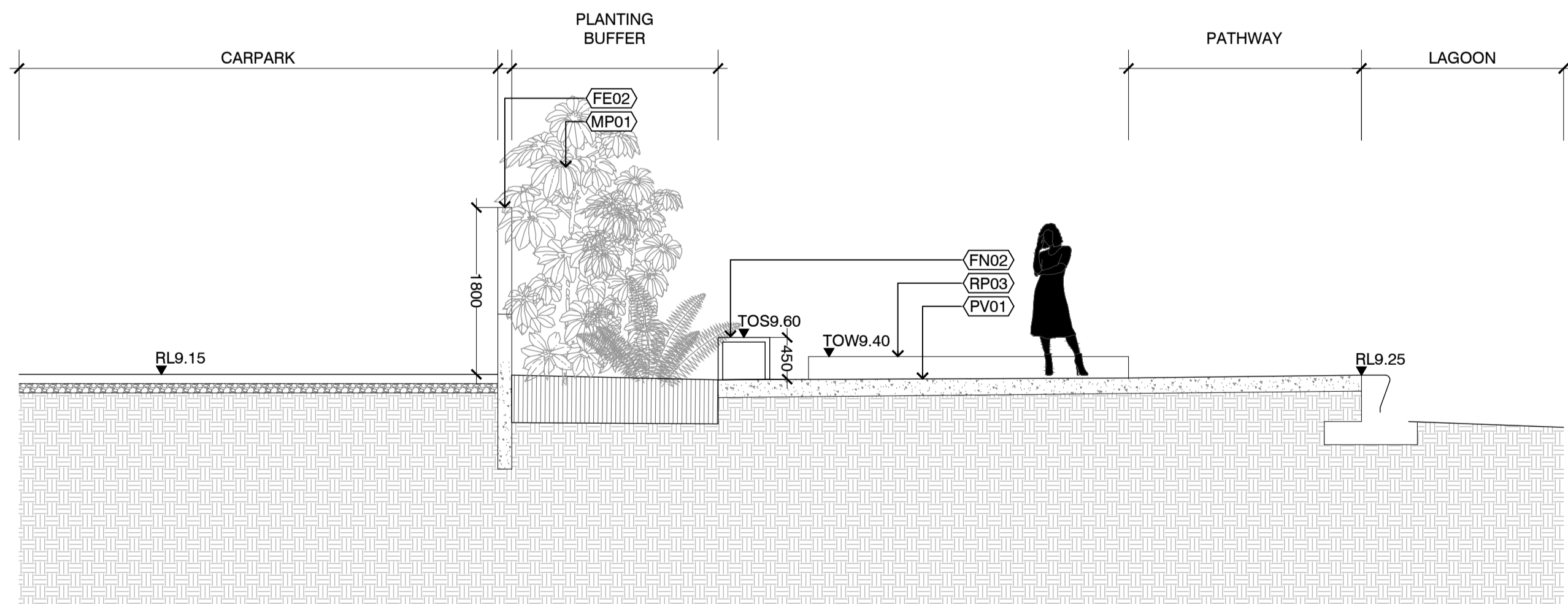
ISSUE
C



1 SECTION THROUGH POOL
SCALE 1:50



2 SECTION THROUGH POOL
SCALE 1:50



3 SECTION THROUGH POOL
SCALE 1:50



Department of Planning
and Environment

Issued under the Environmental Planning and Assessment Act 1979

Approved Section 4.55 (2) Modification Application

No: SSD 7942 MOD 1

Granted on 15 February 2022

Signed: R.R.

Sheet No: 17 of 19

NOTES

THESE DRAWINGS ARE TO BE READ IN CONJUNCTION WITH ALL LANDSCAPE SCHEDULES AND TECHNICAL SPECIFICATION AND OTHER CONSULTANTS DRAWINGS. CHECK AND VERIFY ALL DIMENSIONS AND SITE CONDITIONS PRIOR TO THE COMMENCEMENT OF ANY WORK. DO NOT SCALE DRAWINGS - REFER TO FIGURED DIMENSIONS ONLY. INFORM OCULUS OF ANY DISCREPANCIES FOR CLARIFICATION BEFORE PROCEEDING. UNLESS NOTED OTHERWISE THIS DRAWING IS NOT FOR CONSTRUCTION.

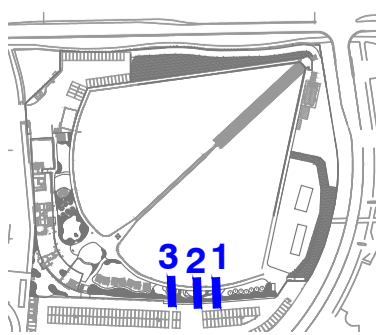
© OCULUS 2019 All rights reserved



SERVICES SHOWN ON THIS DRAWING ARE APPROXIMATELY ONLY. THE EXACT LOCATION IS TO BE CONFIRMED ON SITE BY CONTRACTOR PRIOR TO COMMENCEMENT WORK.

INDICATIVE SECTION DETAILS
FOR CONTEXT

KEY PLAN



ISSUE	DATE	AMENDMENT	DRN	APRVD
A	10.03.21	ISSUE FOR S4.55	RB	AK
B	29.10.21	ISSUE FOR S4.55	BJ	AK

OCULUS

level 1 / 5 wilson street, p.o. box 307, newtown, nsw 2042
p 02.9557.5533 australia@oculus.info
SYDNEY MELBOURNE WASHINGTON

PROJECT
URBN SURF SYDNEY
HILL ROAD, SYDNEY OLYMPIC PARK NSW

CLIENT
URBN SURF
LVL 2, 95 PITT STREET SYDNEY NSW 2000

ARCHITECT
CLARKE HOPKINS CLARKE
HOLT STREET, SURRY HILLS 2010

STATUS
S4.55
DEVELOPMENT APPLICATION

DRAWING SCALE
SCALE 1:50 @ A1
0.5 0 0.5 1 2.5m

NORTH POINT

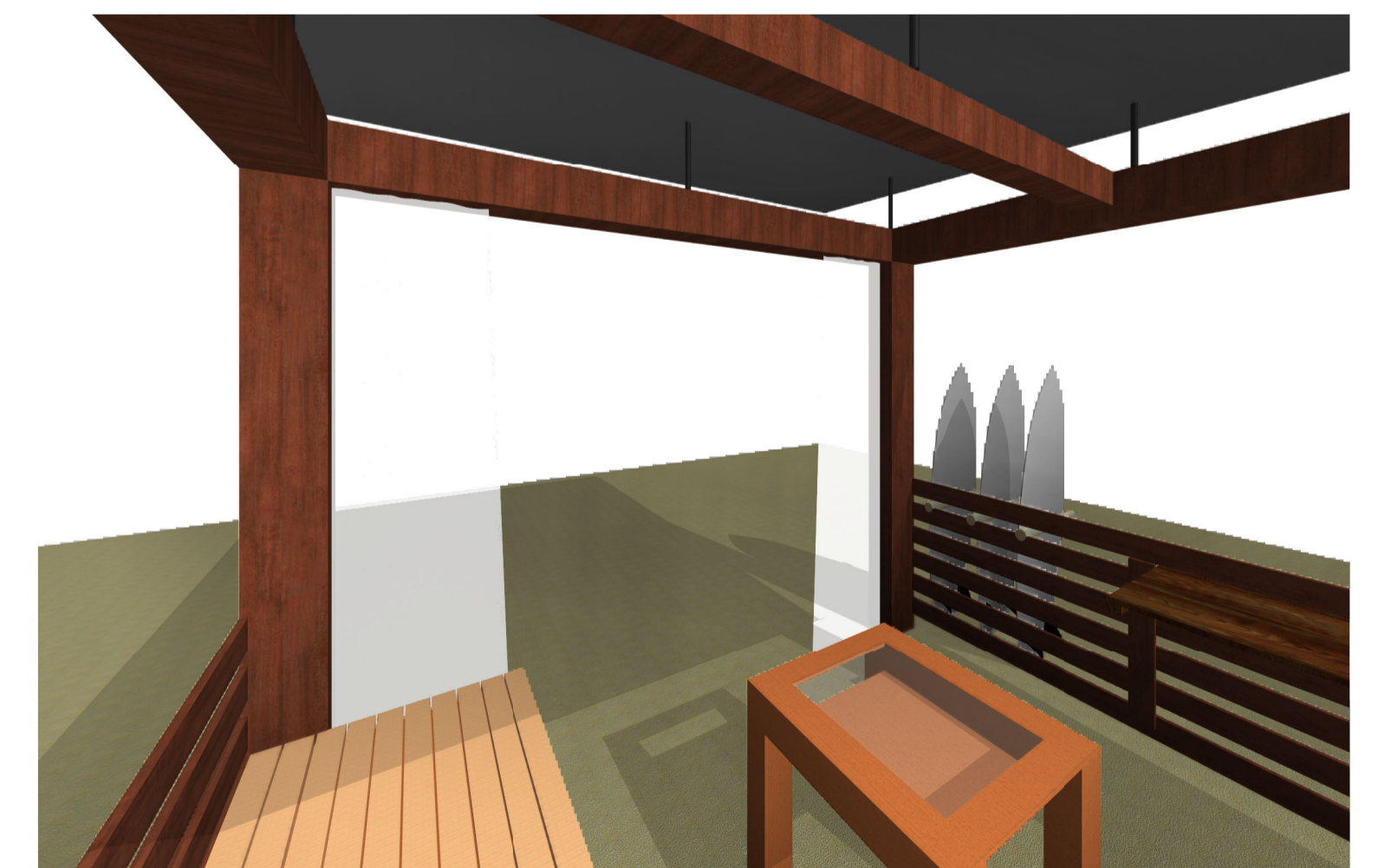
DRAWING
SECTIONS & ELEVATIONS
G, H, I + J

PROJECT No
S19-023

DRAWING No
L701

SHEET SIZE
A1

ISSUE
B



INDICATIVE DETAILS FOR CONTEXT

© OCULUS 2017 All rights reserved

 **DIAL BEFORE YOU DIG**
www.1100.com.au

[illegible]

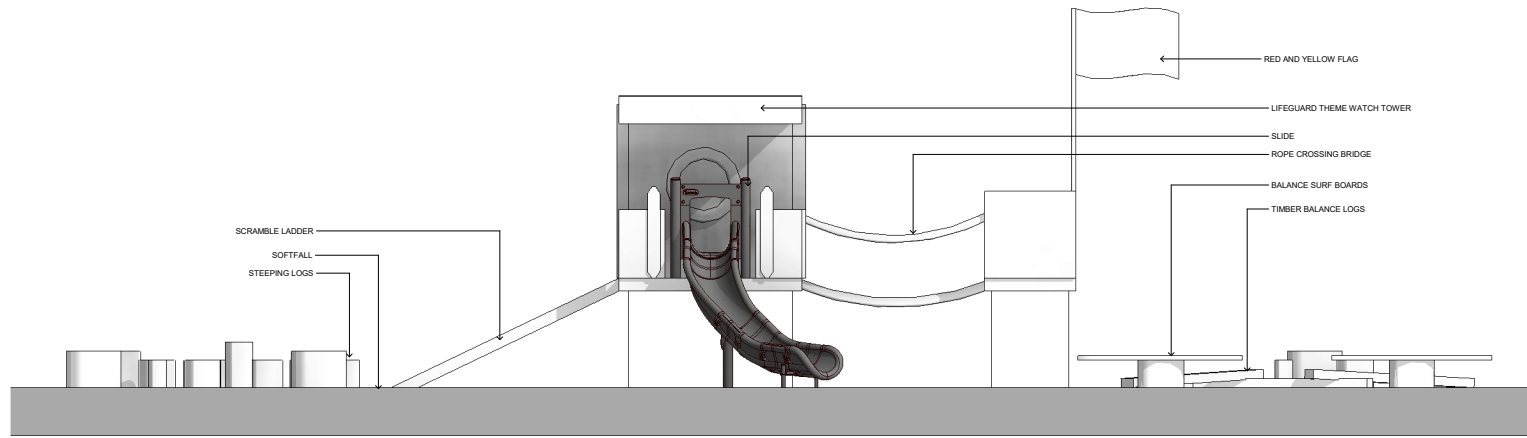
Level 1, 5 Wilson Street, p.o. box 307, Newtown, 2042
p 03.9670.0699 australia@oculus.info
MELBOURNE SYDNEY WASHINGTON

CLIENT
URBN SURF

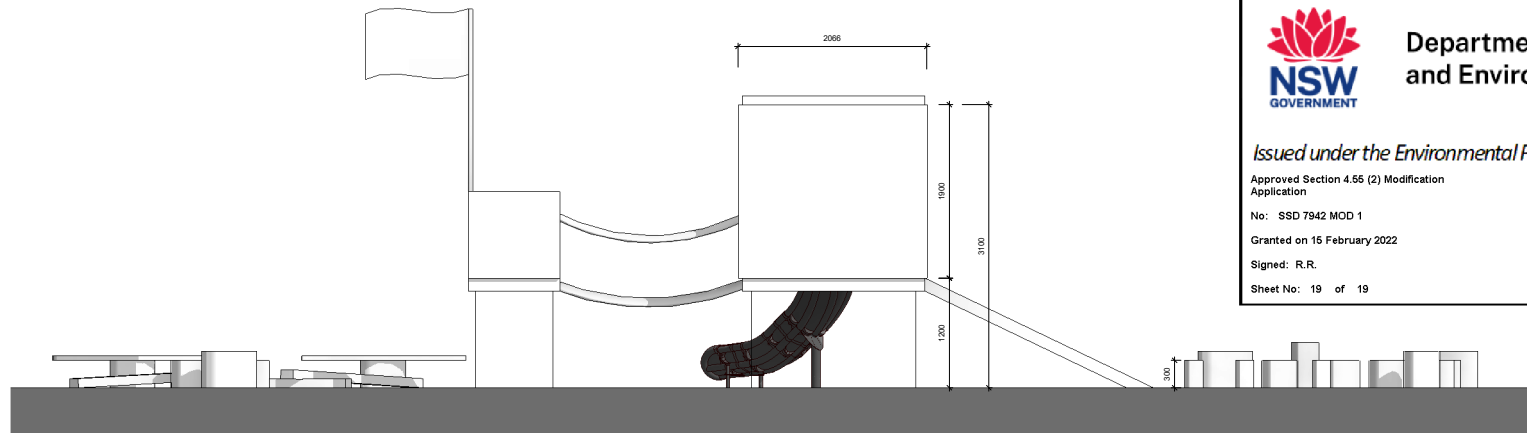
STATUS
S4.55

PROJECT N°	SHEET SIZE
S19-023	A1

DRAWING N°	ISSUE
L703	A



1 FRONT ELEVATION
1:25



2 BACK ELEVATION
1:25



Department of Planning and Environment

Issued under the Environmental Planning and Assessment Act 1979

Approved Section 4.55 (2) Modification
Application

No: SSD 7942 MOD 1

Granted on 15 February 2022

Signed: R.R.

Sheet No: 19 of 19

NOTES
THESE DRAWINGS ARE TO BE READ IN CONJUNCTION WITH ALL LANDSCAPE
SCHEDULES AND TECHNICAL SPECIFICATIONS AND OTHER CONSULTANTS
DRAWINGS. CHECK AND VERIFY ALL DIMENSIONS AND SITE CONDITIONS
PRIOR TO THE COMMENCEMENT OF ANY WORK. DO NOT SCALE DRAWINGS -
REFER TO FIGURED DIMENSIONS ONLY. INFORM OCULUS OF ANY
DISCREPANCIES FOR CLARIFICATION BEFORE PROCEEDING. UNLESS NOTED
OTHERWISE, THIS DRAWING IS NOT FOR CONSTRUCTION.



**INDICATIVE
DETAILS FOR
CONTEXT**

ISSUE	DATE	AMENDMENT	DRAWN	APPROVED
A	10.03.21	ISSUE FOR \$4.55	ST	ST

OCULUS

Level 1, 5 Wilson Street, p.o. box 307, Newtown, 2042
p 03 9670 0699 australia@oculus.info
MELBOURNE SYDNEY WASHINGTON

PROJECT
URBN SURF SYDNEY
HILL ROAD, SYDNEY OLYMPIC PARK NSW

CLIENT
URBN SURF

ARCHITECT
CLARKE HOPKINS CLARKE
HOLT STREET, SURRY HILLS NSW

STATUS
\$4.55



DRAWING TITLE
PLAYGROUND ELEVATIONS

PROJECT NO	SHEET SIZE
S19-023	A1
DRAWING NO	ISSUE
L704	A