

12 June 2019

Bloompark
Suite 2.04, 41 McLaren Street
NORTH SYDNEY NSW 2060

Attention: Mr Peter Brogan

Our Ref: 19-0006Bpbc1

Re: Loretto Kirribilli SSD 7919

Dear Mr Brogan,

GML Heritage Pty Ltd (GML) has been engaged by Loreto Kirribilli to provide heritage services in relation to the proposed works at the school which have been granted development approval under SSD 7919. In 2017 GML prepared a heritage impact assessment statement that accompanied the SSD 7919 DA. GML has now been asked to review a minor change to the approved scope of works as part of a section 4.55 application.

The change to the scope of works involves the widening of the existing and proposed new pedestrian paths between the Chapel building and the school's main entrance drive. A 1:20 grade ramp will be incorporated into the new path. The proposed changes have been designed by fjmt architects in consultation with GML and have been documented in sketches prepared by fjmt architects in June 2019.

The proposed change to the paths will have a minor impact on the lawn and gardens that provide a setting for the Chapel building and entrance drive. The proposed works will not result in the removal of any trees and the visually prominent parts of the existing landscaping will remain intact. Gardens, where affected by the works, will be reinstated alongside the paths.

The proposed widening of the pedestrian paths and incorporation of a ramp represents a minor change to the approved design and will result in little heritage impact on the Chapel building, the school's entrance drive or the school more generally.

It is also proposed to change some existing finishes within the Chapel building. This involves the removal of the existing floor tiles to the Aloysius verandah on the eastern side of the Chapel building, and the removal of the existing ceilings in the level 1 classrooms. The verandah floor tiles and suspended drop-in tile ceilings are not original fabric and there will be no adverse heritage impact in their removal.

The proposed changes will not alter the conclusions of the Loreto Kirribilli Masterplan and Stage 1 Works Heritage Impact Assessment Statement prepared by GML in July 2017.

Sydney Office

Level 6
372 Elizabeth Street
SURRY HILLS NSW Australia 2010
T +61 2 9319 4811
E heritage@gml.com.au

Canberra Office

2A Mugga Way
RED HILL ACT Australia 2603
T +61 2 6273 7540
E heritage@gml.com.au

GML Heritage Pty Ltd

ABN 60 001 179 362

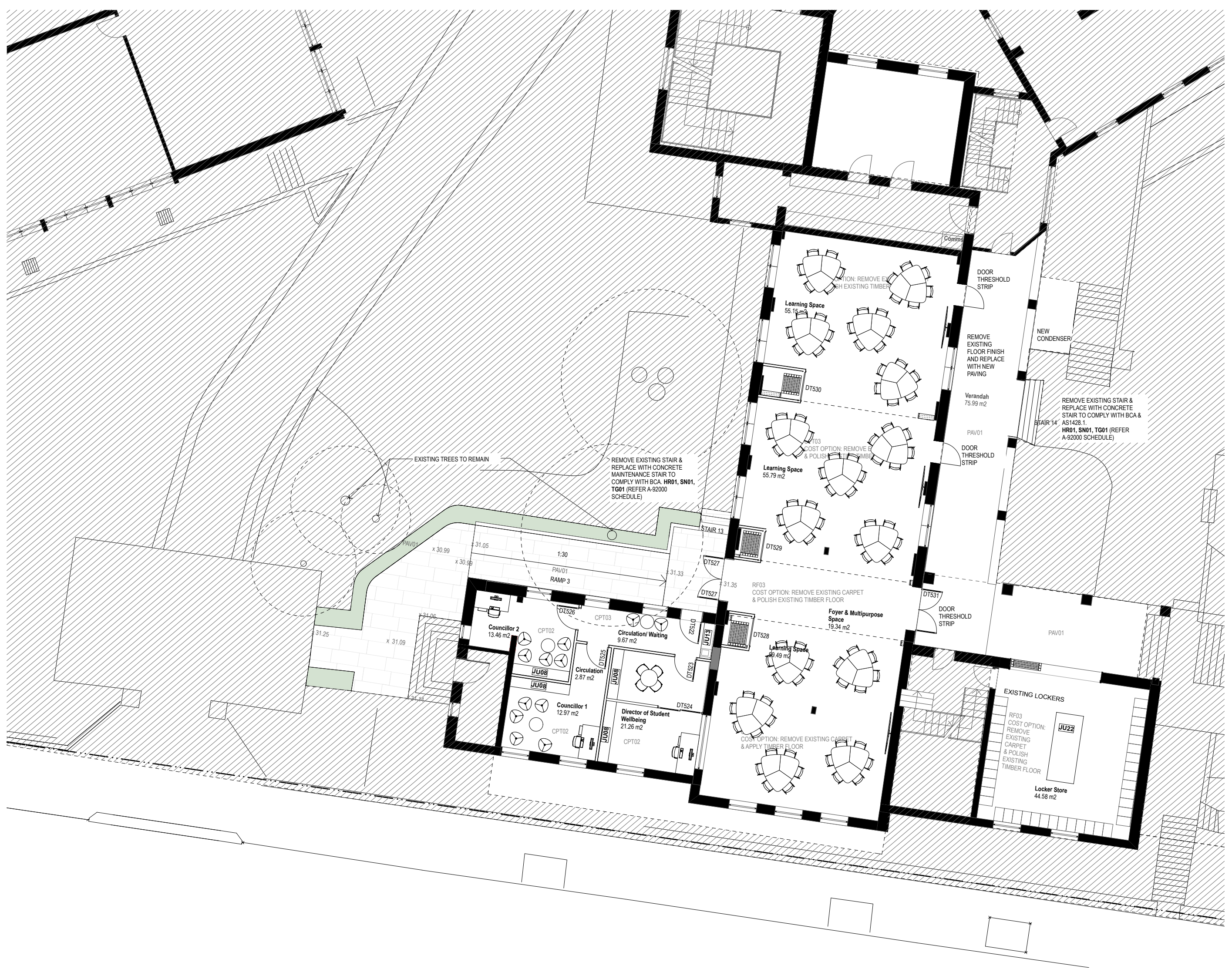
Yours sincerely,
GML Heritage Pty Ltd

A handwritten signature in black ink, appearing to read 'A. Simanowsky', with a small mark above the first letter.

Anna Simanowsky
Senior Heritage Consultant

Attachments:

- fjmt sketches of proposed changes to path.



1 July 2019

Bloompark
Suite 2.04, 41 McLaren Street
NORTH SYDNEY NSW 2060

Attention: Mr Peter Brogan

Our Ref: 19-0006Bpbc2

Re: Loretto Kirribilli SSD 7919

Dear Mr Brogan,

GML Heritage Pty Ltd (GML) has been engaged by Loretto Kirribilli to provide heritage services in relation to the proposed works at the school which have been granted development approval under SSD 7919. In 2017 GML prepared a heritage impact assessment statement that accompanied the SSD 7919 DA. GML has now been asked to review a minor change to the approved scope of works as part of a section 4.55 application.

The change to the scope of works involves the provision of air conditioning to the level 1 classrooms in the Chapel building. The proposed changes have been designed by fjmt architects in consultation with GML and have been documented in sketches prepared by fjmt architects in June 2019.

The air conditioning system consists of externally located condenser units, with air intake points located in external walls of the building. Ductwork within the classrooms will be at a high level, and will be concealed above new suspended ceilings. There will be little heritage impact on the classrooms as a result of the works.

No changes will be made to the Chapel's western elevation, this being its most prominent elevation. There will be no visible plant on the western side of the building, and there will be no impact on views of the building from the west. External changes related to the provision of the air conditioning are limited to the eastern elevation, which is the building's least intact elevation. It is also the least prominent of the building's elevations.

Condenser units are to be located on the eastern side of the building below the floor level of the Aloysius verandah, and on the southern side the building. The condenser adjacent to the Aloysius verandah will be pad mounted at a lower ground level so as minimise the impact on views of the verandah. There will be a positive heritage impact in the removal of the existing condenser units located on top of the verandah roof, which are visually intrusive.

On the building's southern side the proposed condenser unit will be located adjacent to other existing condensers, and will be pad mounted on the ground adjacent to the building. As such it will be concealed from view from Carabella Street by the school's masonry boundary wall.

Sydney Office

Level 6
372 Elizabeth Street
SURRY HILLS NSW Australia 2010
T +61 2 9319 4811
E heritage@gml.com.au

Canberra Office

2A Mugga Way
RED HILL ACT Australia 2603
T +61 2 6273 7540
E heritage@gml.com.au

GML Heritage Pty Ltd

ABN 60 001 179 362

Air intake points will be located on the building's eastern elevation, where it is proposed to remove window sashes to the small windows above the Aloysius verandah roof and replace them with louvre panels. This will result in a minor adverse impact on the building, but is preferable to forming new openings to accommodate the louvres. By making use of existing window openings the rhythms and patterning of the openings on this elevation will remain intact.

The removal of some window sashes and replacement with louvre panels should be undertaken without damage to the window frame. The removed sashes should be retained by the school for reinstallation at a future date if required.

The proposed changes will not alter the conclusions of the Loreto Kirribilli Masterplan and Stage 1 Works Heritage Impact Assessment Statement prepared by GML in July 2017.

Yours sincerely,
GML Heritage Pty Ltd



Anna Simanowsky
Senior Heritage Consultant

Attachments:

- fjmt sketch of air conditioning to Chapel level 1 classrooms.

