



11.0 Area & Accommodation Schedule Summary

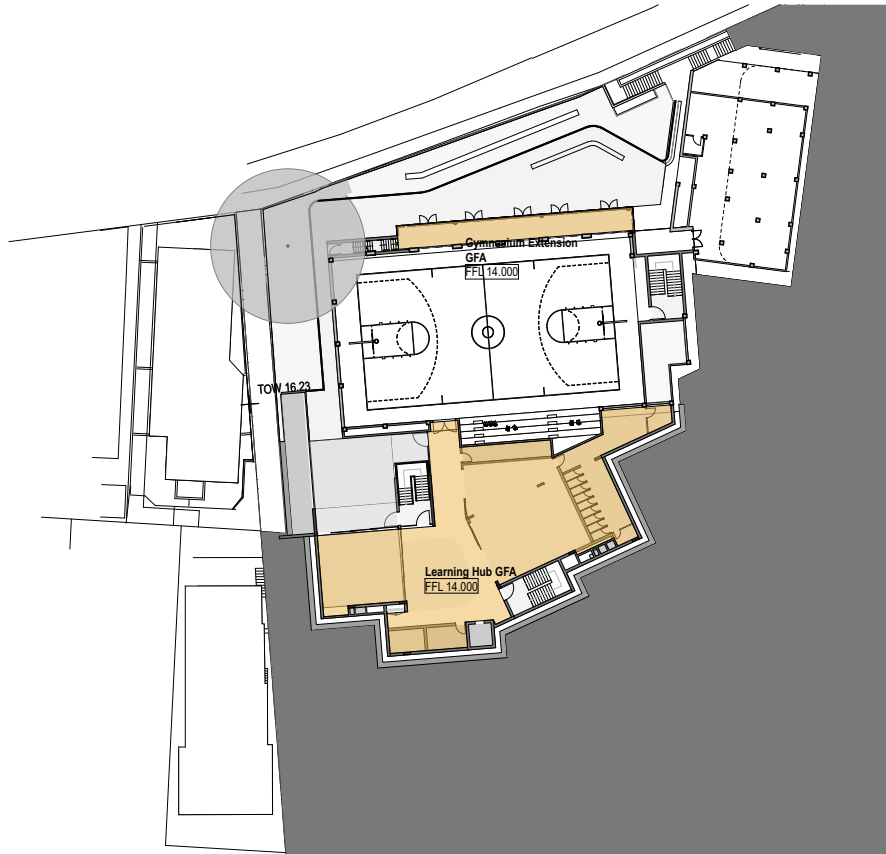
Area - Existing Building GFA Schedule

PROJECT	Master plan		
Room Name	Floor (Story)	Zone Category	Area
B Block GFA			
	Level D	Education	213.60
	Level E	Education	213.60
	Level F	Education	213.60
			640.80 m²
Block J GFA			
	Level F	Education	533.36
	Level G	Education	866.42
	Level H	Education	789.83
	Level I	Education	838.87
			3,028.48 m²
Carpark GFA			
	Level A	Education	2,060.96
			2,060.96 m²
Centenary Hall GFA			
	Level A	Education	212.92
	Level B	Education	1,045.02
	Level C	Education	261.05
			1,518.99 m²
Chapel Block GFA			
	Level D	Education	205.07
	Level E	Education	854.78
	Level F	Education	1,055.77
	Level H	Education	432.15
	Level I	Education	107.03
			2,654.80 m²
Gymnasium GFA			
	Level A	Education	722.62
			722.62 m²
Junior School GFA			
	Level D	Education	472.76
	Level E	Education	1,129.38
	Level F	Education	669.31
			2,271.45 m²

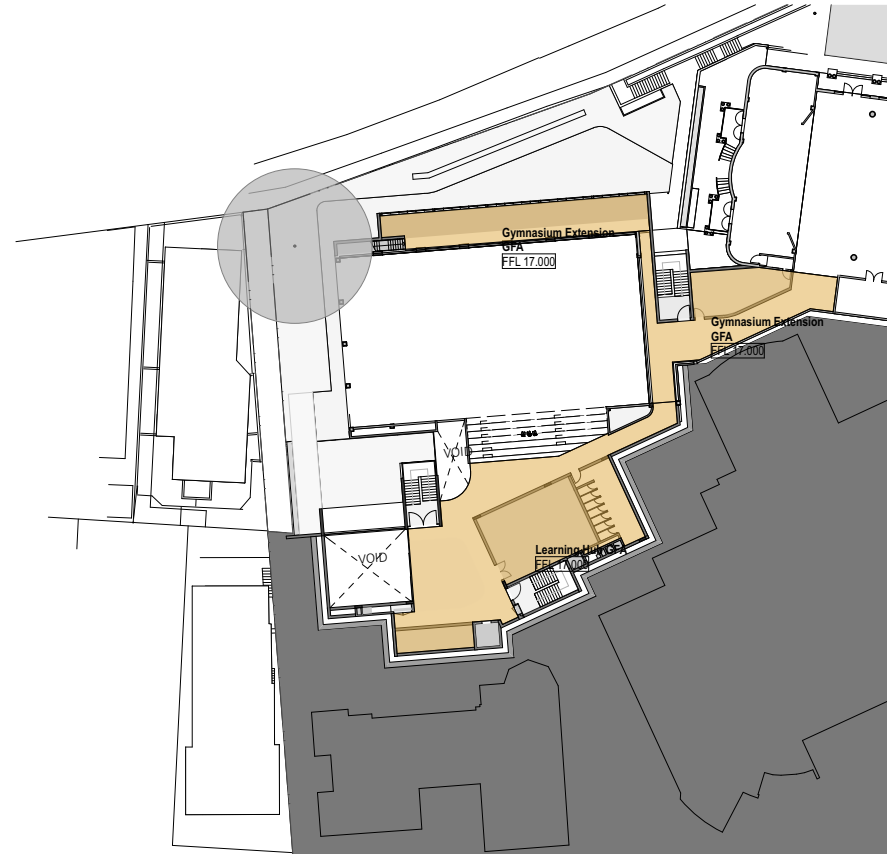
Room Name	Floor (Story)	Zone Category	Area
Marion Centre GFA			
	Level E	Education	195.87
	Level F	Education	313.37
	Level G	Education	329.82
	Level H	Education	328.54
	Level I	Education	253.92
			1,421.52 m²
Performing Arts Centre GFA			
	Level B	Education	640.42
	Level C	Education	854.65
			1,495.07 m²
Science Building GFA			
	Level B	Education	697.49
	Level C	Education	606.60
			1,304.09 m²
Senior School GFA			
	Level E	Education	611.07
			611.07 m²
			17,729.85 m²

Area - Western Precinct Learning Hub GFA Schedule

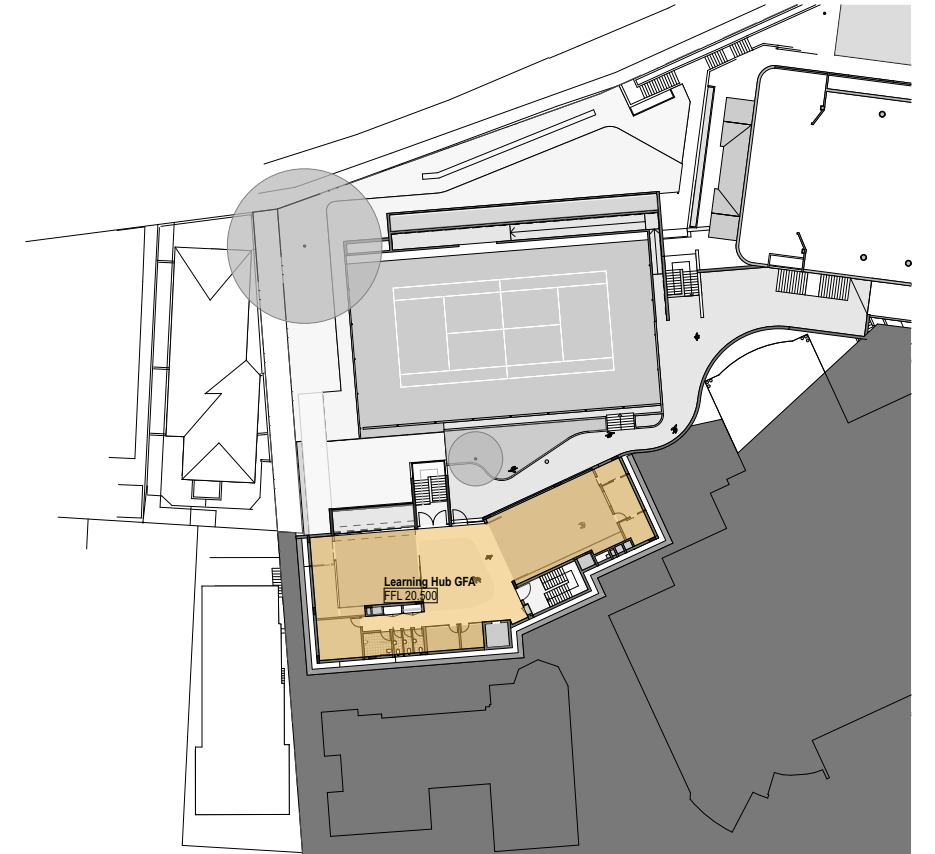
PROJECT	Master plan		
Room Name	Floor (Story)	Zone Category	Area
Learning Hub GFA			
	Level 1	Education	384.05
	Ground	Education	372.72
	Lower Ground 1	Education	425.13
	Lower Ground 2	Education	415.17
	Lower Ground 3	Education	359.37
	Lower Ground 4	Education	489.76
			2,446.20 m²
Gymnasium Extension GFA			
	Lower Ground 3	Education	150.97
	Lower Ground 3	STAFF / ADMINISTRATION	114.04
	Lower Ground 4	PDHPE	67.04
			332.05 m²
			2,778.25 m²



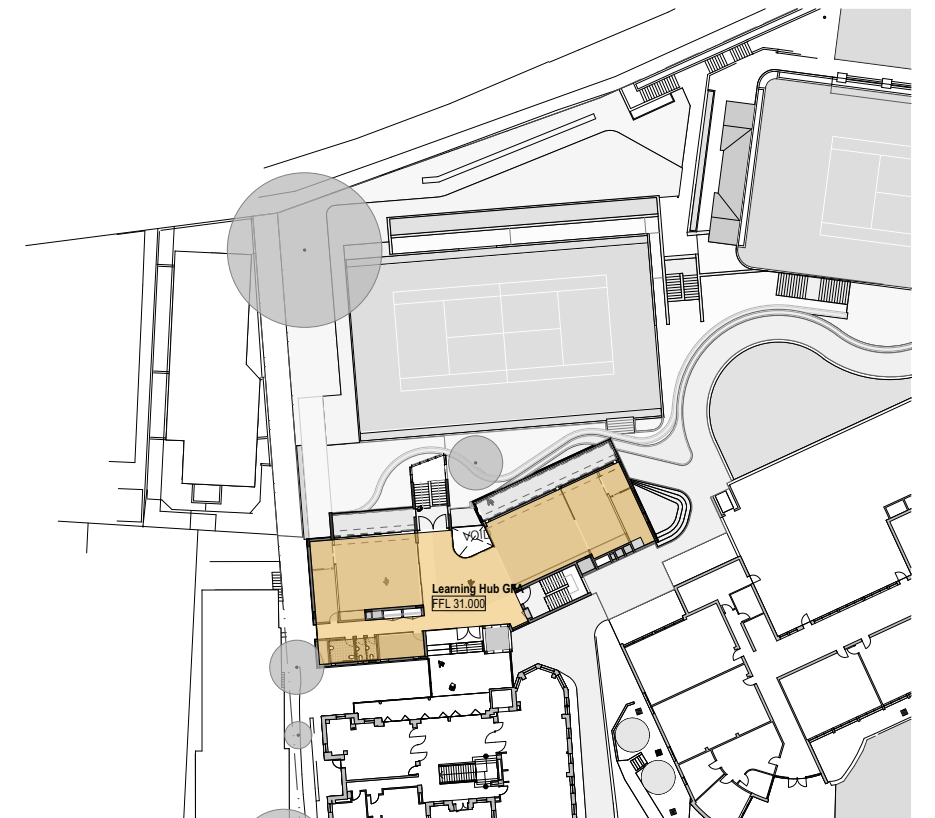
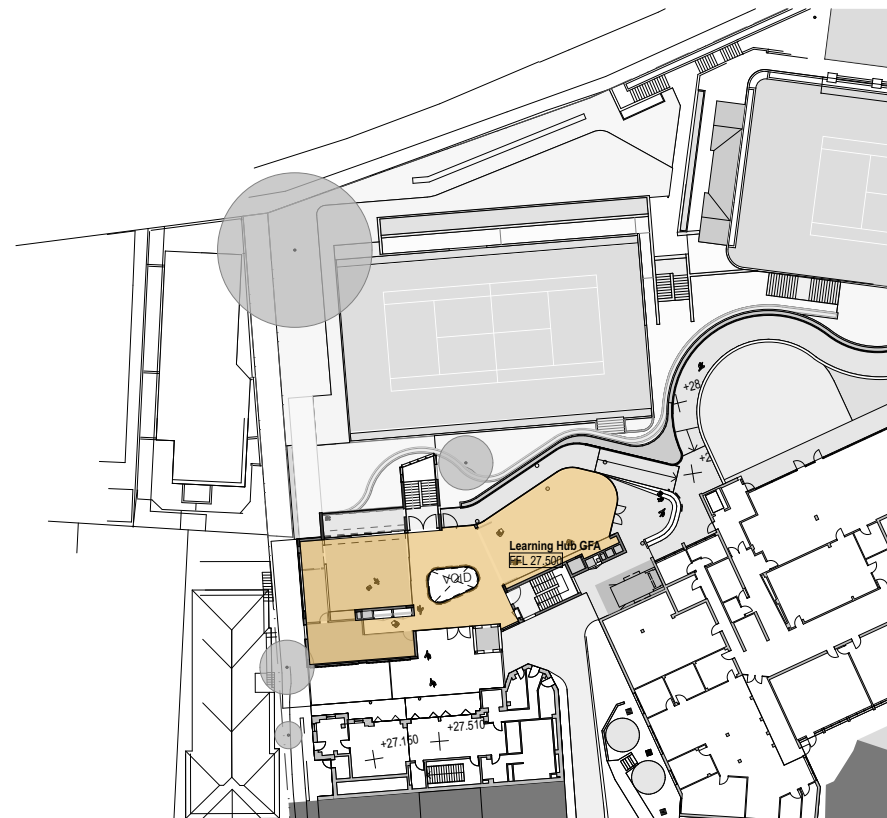
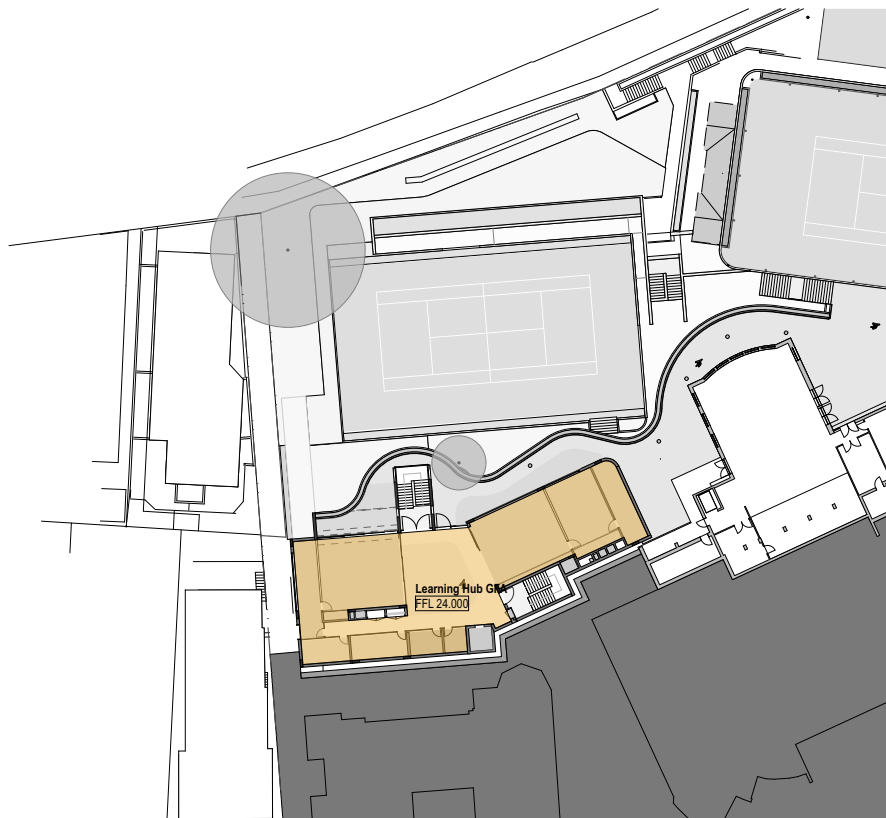
1 PLAN Level A  
1:500



2 PLAN Level B  
1:500



3 PLAN Level C  
1:500



### Area - Western Precinct Learning Hub Accommodation Schedule

PROJECT	Master plan
---------	-------------

Zone Category	Floor (Story)	Room Name	Area	
TAS	Level 2	ROOF TERRACE	91.17	
	Level 1	CIRCULATION / OPEN COLLABORATION	51.96	
	Level 1	LEARNING STUDIO	146.61	
	Level 1	STORE	2.75	
	Level 1	STORE/WET AREA	46.80	
	Level 1	STUDIO WORKSHOP	37.05	
	Level 1	SUPPORT	12.87	
	Ground	CIRCULATION / OPEN COLLABORATION	95.75	
	Ground	LEARNING STUDIO	72.00	
	Ground	PRESENTATION	123.54	
	Ground	STAFF	42.82	
	Ground	STORE	2.75	
	Ground	STORE/WET AREA	22.50	
	Lower Ground 1	CIRCULATION / OPEN COLLABORATION	55.12	
	Lower Ground 1	LEARNING STUDIO	146.24	
	Lower Ground 1	MEETING	15.86	
	Lower Ground 1	STORE	26.44	
	Lower Ground 1	STUDIO WORKSHOP	74.51	
	Lower Ground 2	STUDIO FOOD TECHNOLOGY/ DESIGN	72.00	
	Lower Ground 2	CIRCULATION / OPEN COLLABORATION	55.12	
	Lower Ground 2	CL / LAUNDRY / STORE	21.37	
	Lower Ground 2	COOLROOM	8.68	
	Lower Ground 2	FOOD PREP	13.02	
	Lower Ground 2	FOOD TECHNOLOGY KITCHEN	106.28	
	Lower Ground 2	MEETING	15.86	
	Lower Ground 2	PANTRY	6.00	
	Lower Ground 2	STORE	2.75	
	Lower Ground 2	STORE/WET AREA	22.50	
	Lower Ground 3	CIRCULATION / OPEN COLLABORATION	55.12	
	Lower Ground 4	CIRCULATION / OPEN COLLABORATION	55.12	
				1,500.56 m²
	PDHPE	Lower Ground 3	CHANGEROOM / AMENITIES	86.83
		Lower Ground 3	PDHPE Staff	79.33
Lower Ground 3		STORE	111.12	
Lower Ground 4		CHANGEROOM / AMENITIES	81.73	
Lower Ground 4		PDHPE - EQUIPMENT STORE	35.85	
Lower Ground 4		PDHPE - MOVEMENT STUDIO OR WEIGHTS	132.81	

Zone Category	Floor (Story)	Room Name	Area
Outdoor Learning			
	Level 1	OUTDOOR LEARNING	58.09
	Ground	OUTDOOR LEARNING	22.50
	Lower Ground 1	OUTDOOR LEARNING	65.83
	Lower Ground 2	FOOD TECH GARDEN	61.92
	Lower Ground 2	LANDSCAPE - COURT EXTENSION	47.46
	Lower Ground 2	OUTDOOR LEARNING	22.50
	Lower Ground 4	OUTDOOR LEARNING	104.34
			382.64 m²
Amenities			
	Level 1	AMENITIES	13.65
	Level 1	CL	2.60
	Lower Ground 1	3D PRINTER	16.19
	Lower Ground 1	LASER CUTTER	13.69
	Lower Ground 2	AMENITIES	17.42
			63.55 m²
			2,641.64 m²