



THE UNIVERSITY OF
SYDNEY

Chau Chak Wing Museum

Response to Heritage Council Submission

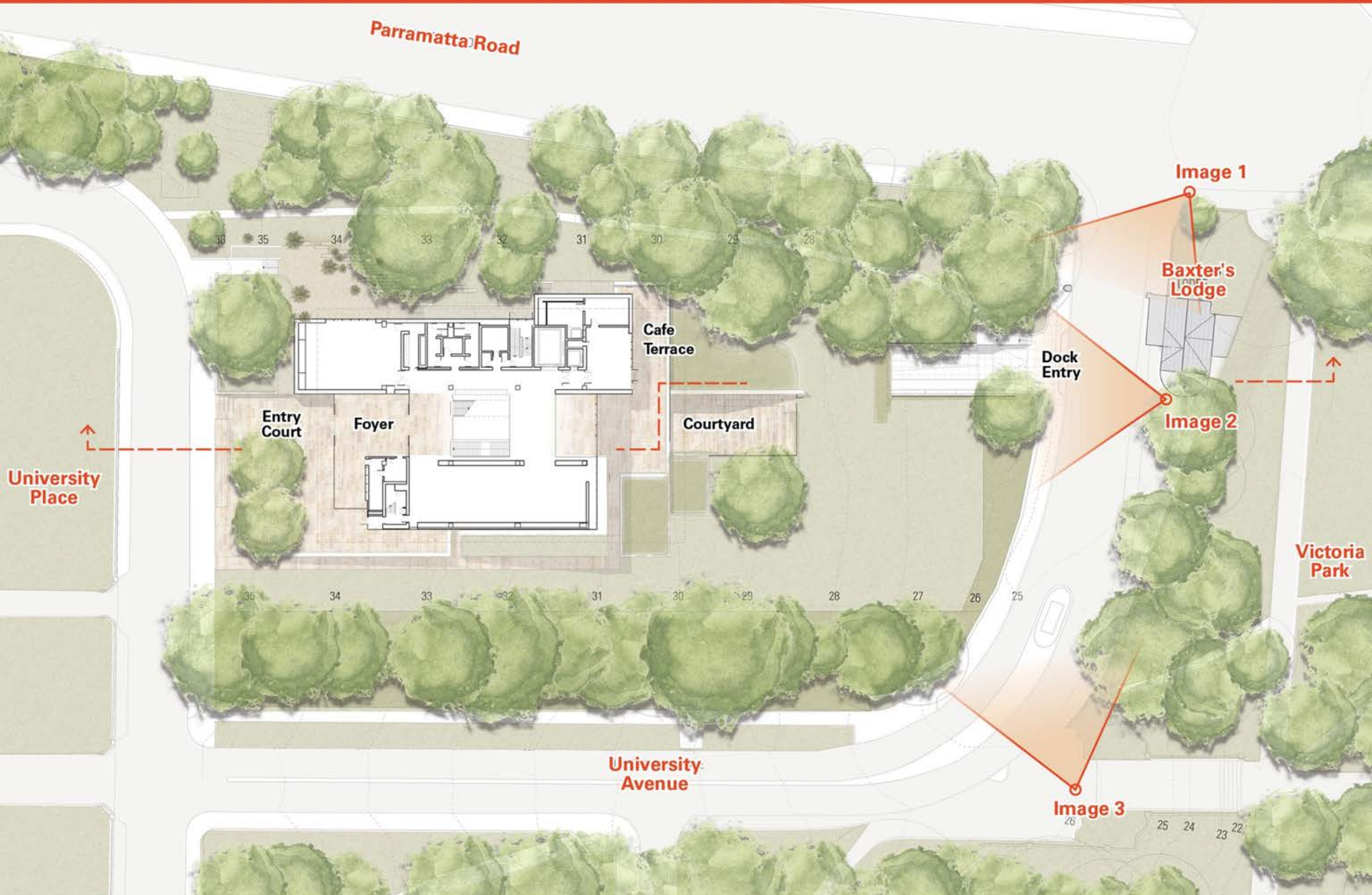
State Significant Application SSD 16_7894

6 September 2017

Summary of issues raised by Heritage Council

Heritage Council Comment	Proponent Response
The view towards the loading dock entry from Baxter's Lodge (View E) photomontage confirms Heritage Council concerns that the impact of the loading dock, located at the main entry to the University is unacceptable.	<p>The "View E" referred to by the Heritage Council was prepared by Richard Lamb & Associates in conjunction with JPW Architects, and was included in the "Certification of View Analysis Assessment Report" within the SSDA, that was intended to "provide certification of the adequacy and accuracy of block photomontages only" ("Certification of View Analysis Assessment Report" by Richard Lamb & Associates, dated 17 May 2017, page 1).</p> <p>This view was not intended to convey a photorealistic "CGI" representation of this aspect of the building design.</p> <p>USYD has however further developed the design of the loading dock entry, and hereby responds with amended drawings, and three "before and after" photos from differing approach perspectives.</p> <p>USYD believes that the proposed location of the loading dock entry driveway is the most appropriate design outcome, and this is demonstrated in the three photomontages included in this response.</p> <p>Upon arriving to site through the Parramatta Road entry gates, the driveway is hidden behind the shadows of the existing trees, as well as being tucked in behind the existing sandstone gate pillar on the western side of the University entrance. This is validated by Image 1, representing the experience of arriving by vehicle or on foot from Parramatta Road travelling in a westerly direction.</p>
It is not designed as a counterpoint for the gate house (Baxter's Lodge).	<p>The argument for the loading dock entry being a counterpoint to Baxter's Lodge is neither logical nor appropriate, since the definition of a counterpoint element can be "a contrasting and parallel element, item or theme"; or "any element that is juxtaposed and contrasted with another".</p> <p>The proposed design however satisfies both definitions, in that the existing sandstone gate pillar on the western side of the University entrance, into which the proposed loading dock entry interlocks, is an appropriate "parallel element"; whilst the "negative space" of the loading dock entry, clad in high quality stone materials, is an appropriate contrasting element to the "positive space" of the Baxter's Lodge urban footprint.</p> <p>The design strategy for the dock entrance has been to minimise visual impacts from Parramatta Road and the main pedestrian axis between Victoria Park and The Quadrangle, without compromising the legibility and prominence of Baxter's Lodge and the University Gates at this entry to the Campus.</p>
The design does not sit comfortably within the site.	<p>As demonstrated in Image 1, the loading dock entry is located as close as possible to the University entry gates, which allows the majority of the existing site curtilage on University Avenue to be preserved as open landscape.</p> <p>Image 3 offers further evidence that the placement of the loading dock entry close to Parramatta Road is a minor component of the overall view when experienced by the majority of pedestrians arriving at the University via the steps from Victoria Park, when the mounded grass landscape and curved low sandstone wall curtilage is the dominant visual cue.</p> <p>Furthermore, any alternative entry point to the basement would be detrimental to the Quadrangle forecourt if placed to the west, and impossible due to existing tree roots if placed to the south.</p>
The design of the loading dock is not well resolved and the utilitarian design has an unacceptable impact on the heritage values of the site.	<p>USYD has continued to refine the design of the loading dock entry since the SSDA submission, and photomontage Image 2 illustrates a closer view (from Baxter's Lodge) of the existing sandstone retaining wall, and how this integrates with the new high quality materiality of the various terraced walls, the new steps at the end of the existing northern pathway, and the visual bulk and scale is further reduced by the introduction of planting and hedges.</p> <p>The proposed alignment of the roadway and roller shutter position enable the landscape levels around the dock entry to be neatly tied back into the existing topography, so that the existing slope and character of the landscape is the dominant expression, rather than the physical expression of the dock entry itself.</p> <p>The materiality and detailing of the dock entrance and surrounds is consistent with the main building.</p>

Site Plan



Section through Loading Dock Entry

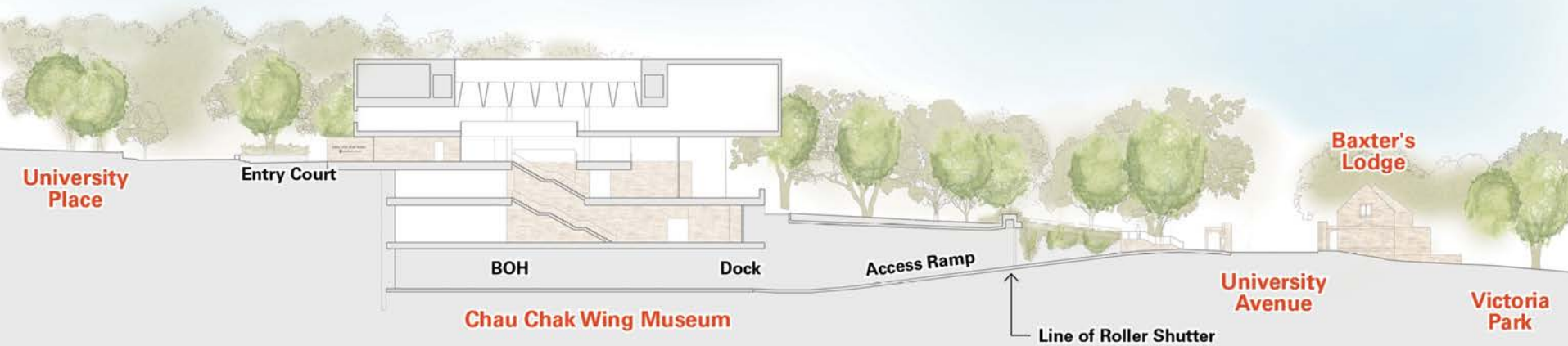


Image 1 - From Parramatta Road - EXISTING



Image 1 - From Parramatta Road - PROPOSED



Image 2 - From south side of Baxter's Lodge - EXISTING



Image 2 - From south side of Baxter's Lodge - PROPOSED



**Image 3 - From entry to Campus from Victoria Park,
on axis with The Quadrangle, looking towards Parramatta Road - EXISTING**



**Image 3 - From entry to Campus from Victoria Park,
on axis with The Quadrangle, looking towards Parramatta Road - PROPOSED**





THE UNIVERSITY OF
SYDNEY

Chau Chak Wing Museum

Response to Heritage Council Submission

State Significant Application SSD 16_7894

6 September 2017