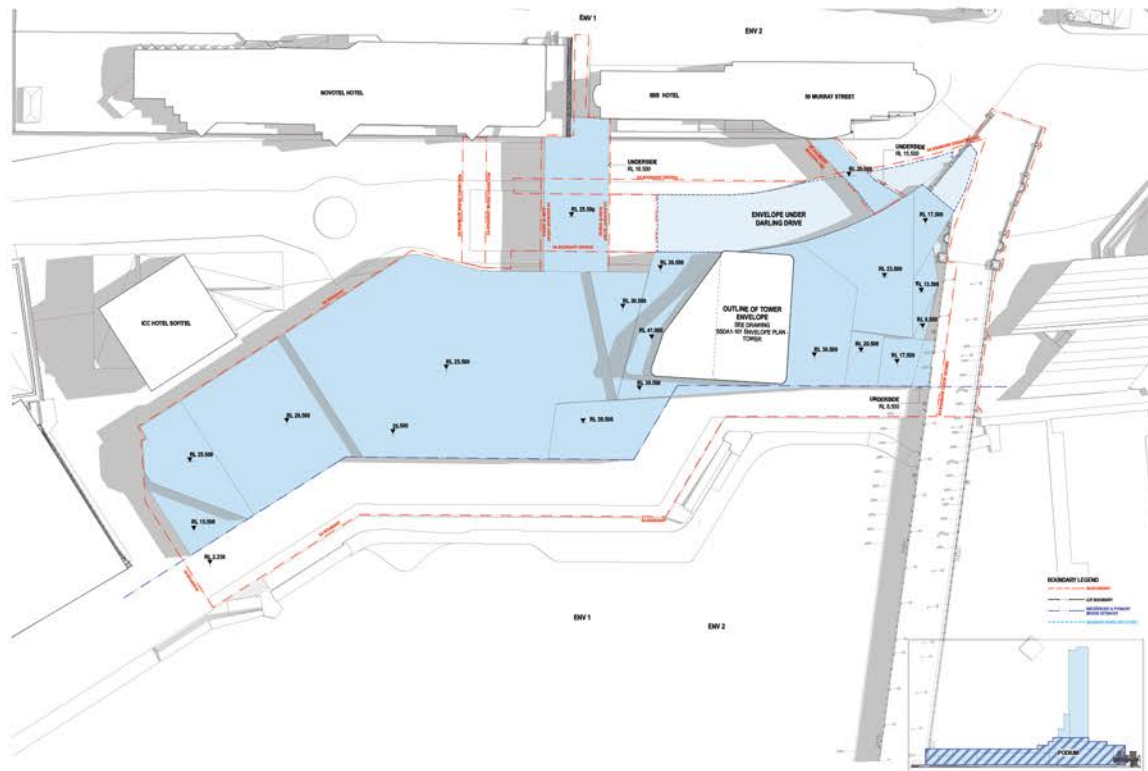


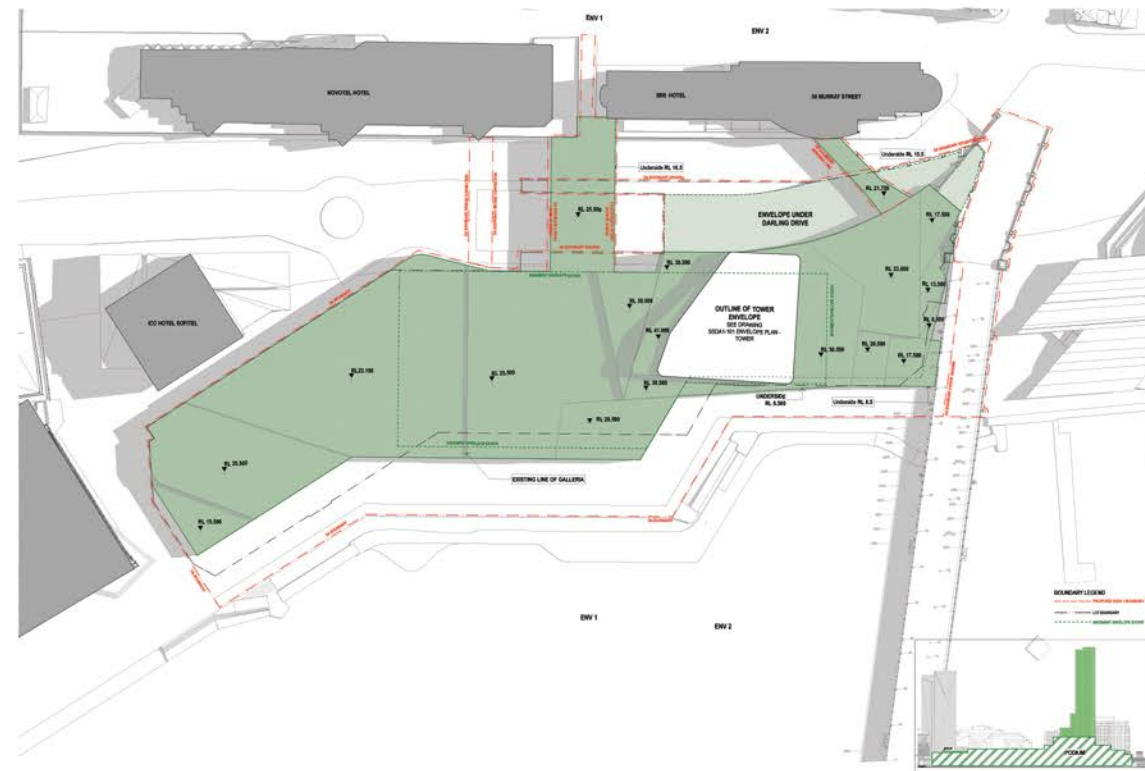
Image 87 Envelope development (4 images)



## Residential SSDA Envelope

June 2016

- Northern bridge link over Darling Drive reinstated following review with representatives from 50 Murray Street
- Northern podium refined to improve view sharing from 50 Murray Street and included lowering the envelope and sculpting to improve view sharing.
- Envelope lowered at the southern end to improve view sharing to ICC and ICC hotel - gym, restaurant, bar and L4 pool deck.



## Residential SSDA Envelope

September 2016

- Southern podium heights and form adjusted following review with ICC and ICC Hotel representatives

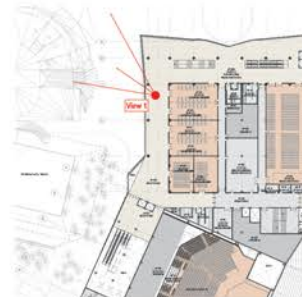
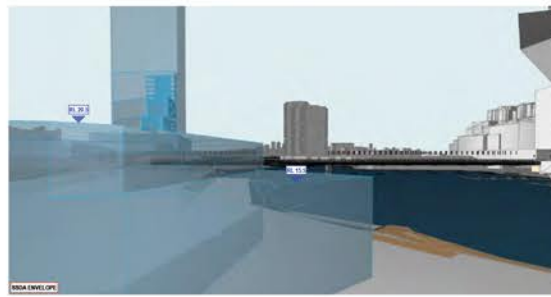
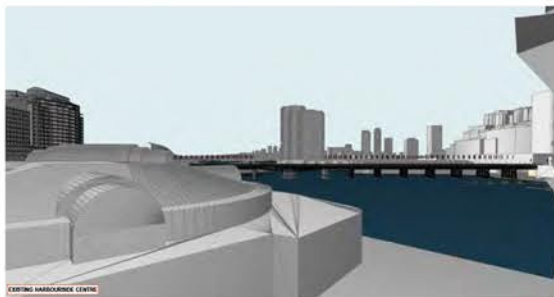


Image 88 'Before and after' diagrams as prepared to review view impacts from ICC foyers, which helped informed the final envelope form at south.