



Blacktown Mt Druitt Hospital Stage 2

Landscape SD Report

June 2016

Contents

Landscape Vision

Landscape Scope

Emergency Carpark

ASB Terraces

- Level 5
- Level 6
- Level 7

Terraces

Former Ambulance Bay

Level 2 Atrium

Level 3 Forecourt

Planting

Landscape Vision

The landscape for Blacktown Hospital Stage 2 aim to address-

- General amenity

New landscape terraces and external spaces shall be created to be used by health workers, patients and visitors. The spaces are designed to compliment adjacent internal spaces and uses and serve as circulation and linkages across the grounds.

- Visual amenity

New planting, paving and furniture shall greatly enhance the general external aesthetics through the site tying in with completed stage 1 works.

- Ecology / Sustainability;

Sustainable materials and low water demanding plants (for example) shall be included within the design where appropriate and possible. Planting will be a mixture of native and exotic species.

The landscape of the site can be described in several areas:

- Carpark

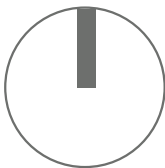
Landscaping within the carpark, shall be enhanced by shade trees, and low groundcovers. This shall assist in shading cars from sun in summer, and the use of deciduous trees shall ensure solar access in winter. Trees shall be maintained to have a clear canopy to ensure good safety sightlines.

- Terraces

Several terraces for varying uses are proposed are proposed. these shall function as spaces for staff, patients and visitors. Creating opportunities for users to converse, and also retreat from their usual settings as well as spaces for treatment and rituals.

- Entry Forecourt

The entry forecourt will act as the central drop off point to the main entry. This space will deliver a sense of arrival and continuity through to the main atrium.



Carpark

The emergency carpark landscape compliments the main hospital frontage to Panorama Parade. A pedestrian path off Panorama Parade is flaked with seating and feature trees linking into broader axis across the campus. Planting to the carpark will be a mixture of trees shrubs and groundcovers to assist with shading the carpark paved area. Planting to the streetscape will feature shrubs to ameliorate headlights shining into adjacent properties.



Low presentational planting to entry sign

Pocket park. Open turf and seating.

Continuation of east west linkage pathway with seating and feature paving.

Low planting and gravel bands to turn around islands

Streetscape planting to public domain shrubs to screen headlights to opposite properties

Low presentational planting to sign



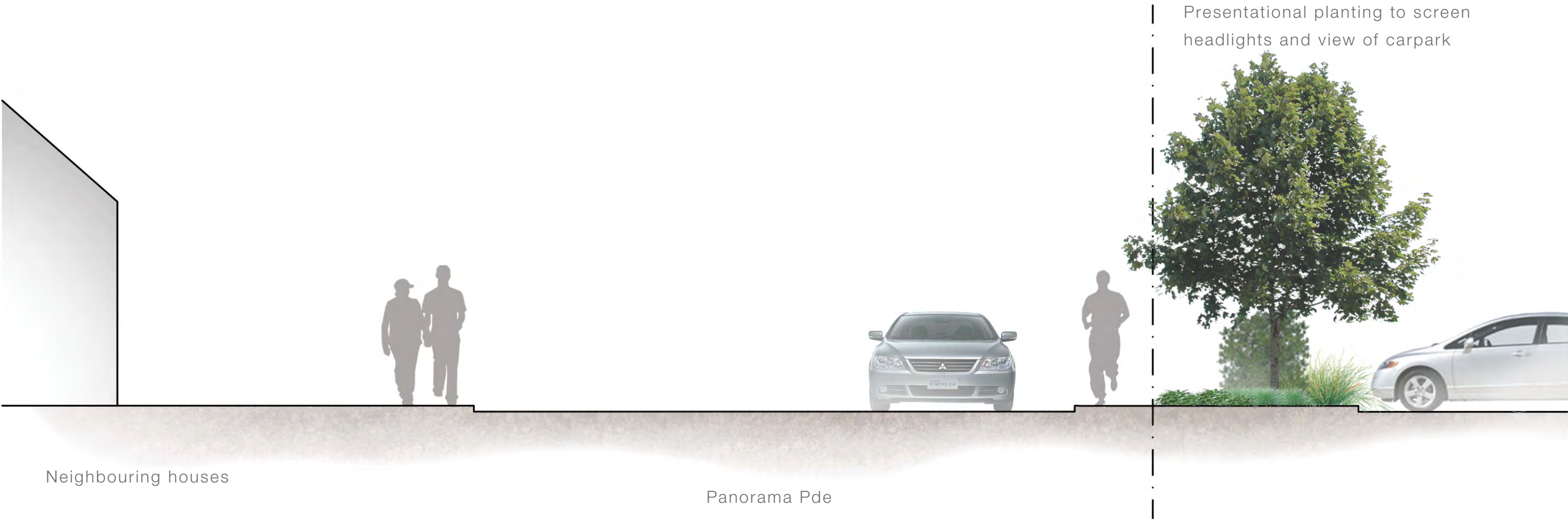
SITE IMAGE
Landscape Architects

JACOBS



Health
Infrastructure

Carpark Section



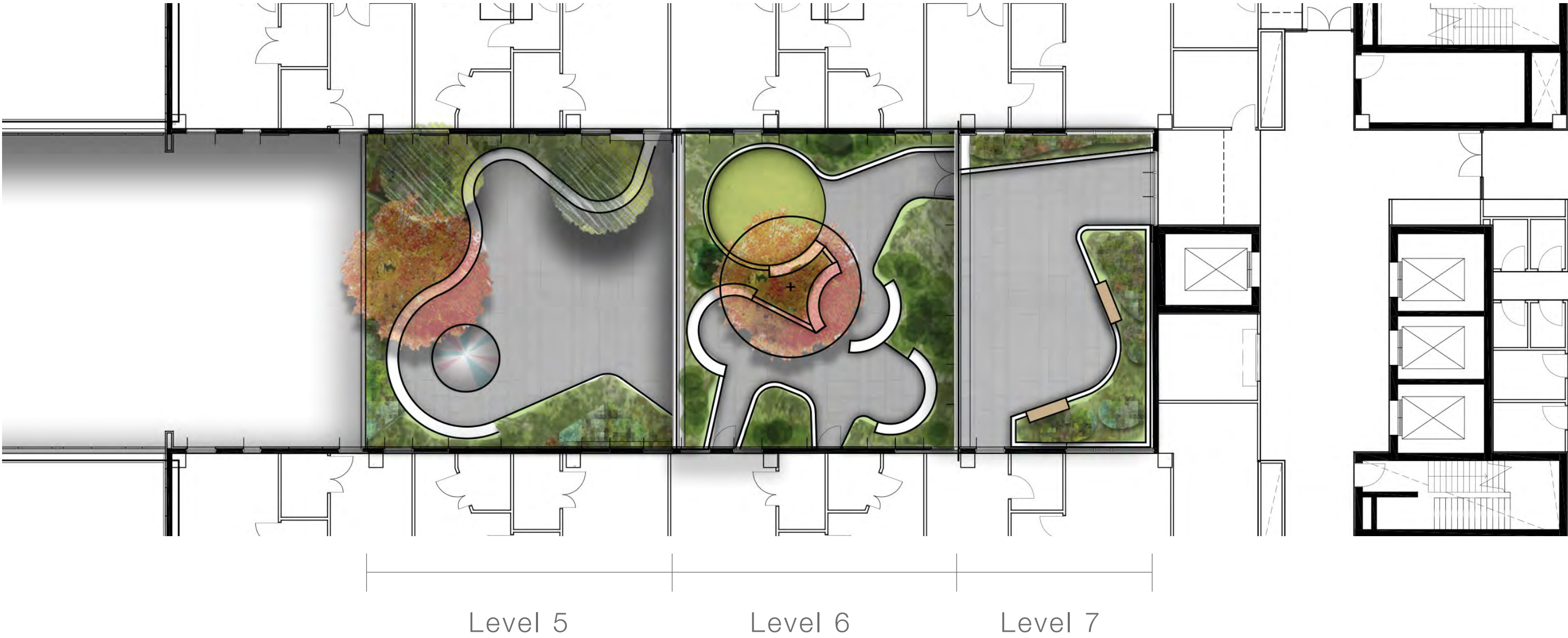
Presentation planting to screen headlights and view of carpark

Neighbouring houses

Panorama Pde

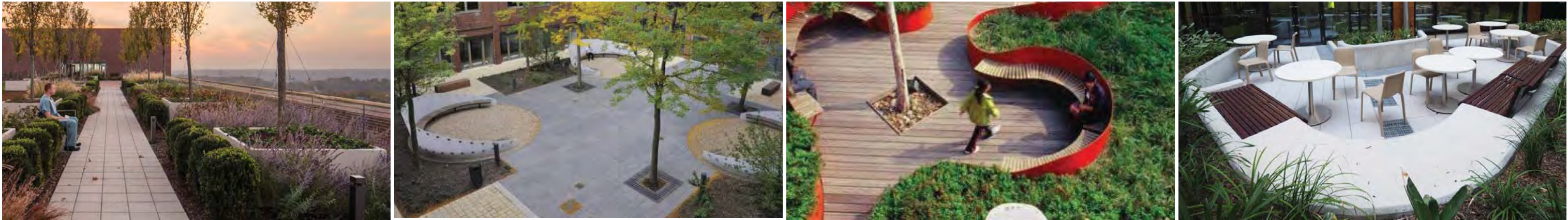
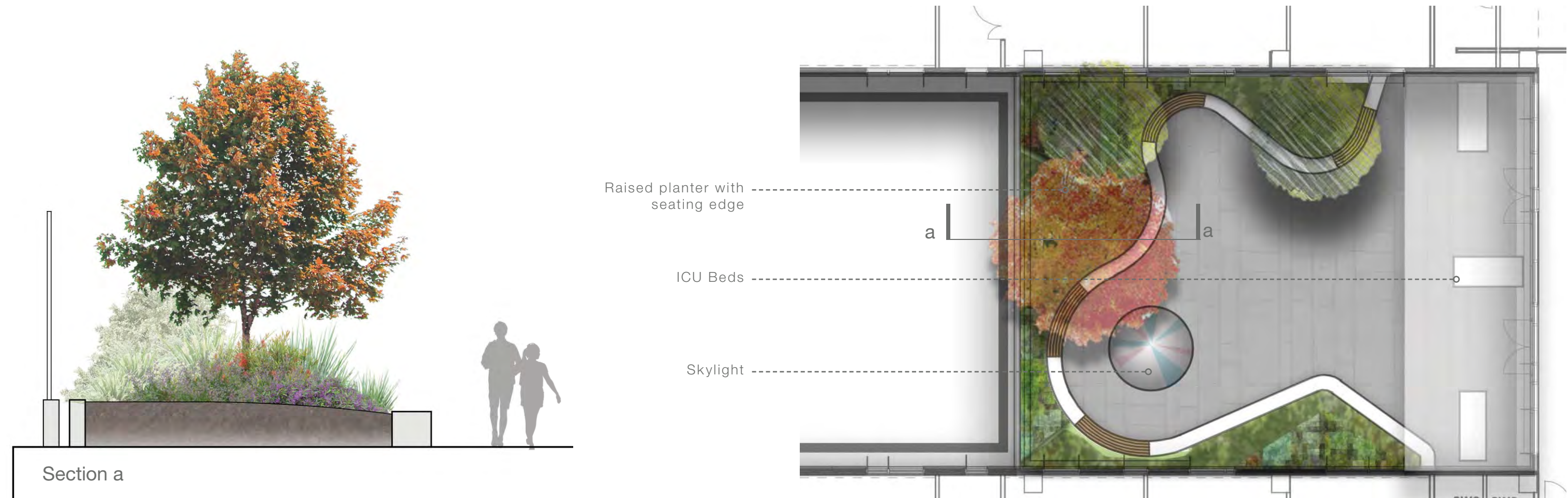
ASB Terraces

The level 5,6 and 7 terraces form the landscape centrepiece of the ASB building, Shapes, materials and planting will compliment each level when viewed from above.



Level 5 ICU Terrace

The level 5 ICU terrace includes provision for patients beds to be wheeled out and parked under the level 6 undercroft. A curvilinear planter snakes around the edge with bench seats fixed to the edge for the use of visitors and staff. A variety of shrubs grasses and groundcovers will soften the edges and provide greening to this central space. The architectural skylight will form the centrepiece of the space,

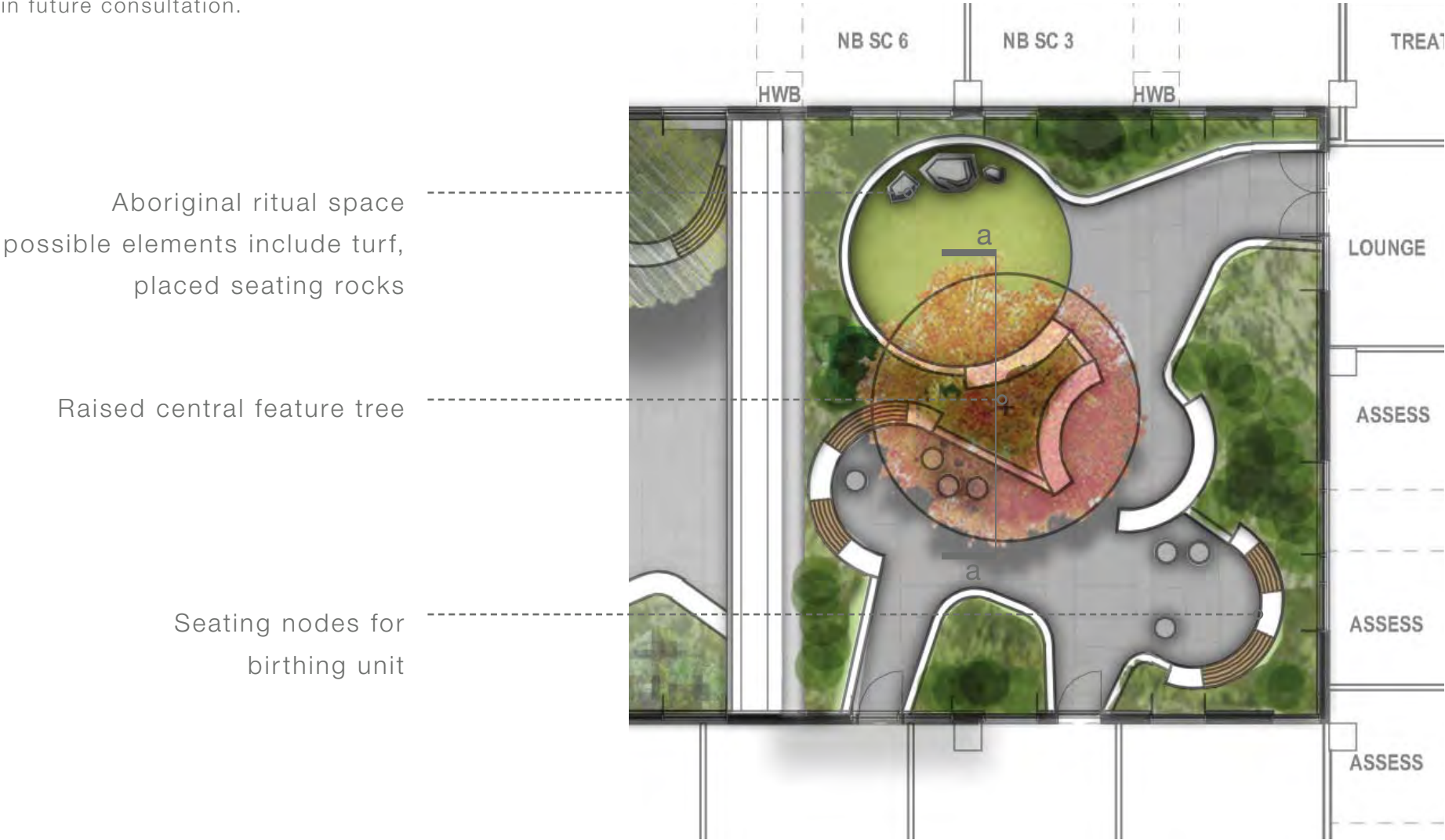


Level 6 Terrace

The level 6 terrace provides spaces for labouring women to be outdoors and an area for aboriginal ritual. Circular nodes allow for a few groups to use the space set amongst planting. Seating will be fixed to the planter edges as well as space to allow for other loose furniture to be added,

The aboriginal ritual space is separated by a planter and a tree for the separation of different ground of users.

A small open turf space is provided with potentially rocks or other items to be determined in future consultation.



Aboriginal ritual space
possible elements include turf,
placed seating rocks

Raised central feature tree

Seating nodes for
birthing unit



Seating node for
birthing unit Feature tree
and separation
planting Aboriginal ritual
area

Section a



Level 7 Terrace

The level 7 terrace will have planters with seating fixed to the edges for the use of patients visitors and staff. An open area can be used for further dining furniture or small gatherings.



Separation planting to building
as required

Raised planters with seating

Flexible paved central space
Dining furniture

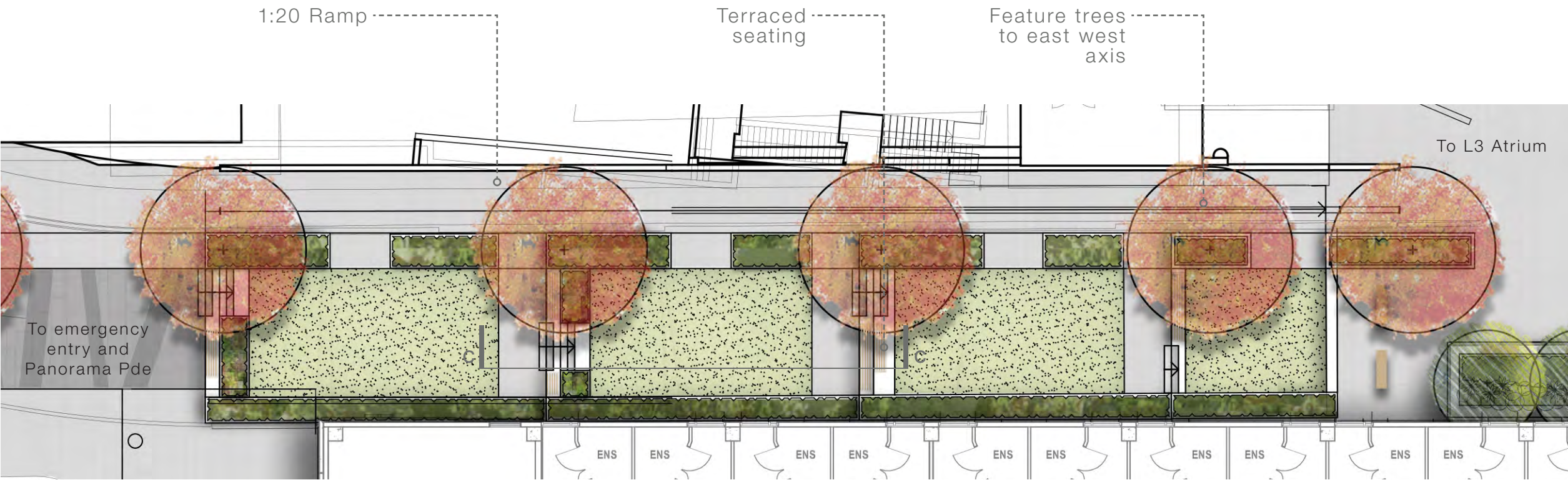


Terraces

The former ambulance ramp terraces form the main pedestrian link from Panorama Parade and the new atrium. The current footpath will be resurfaced with the roadway becoming a series of small terraced gardens with turf, shrubs and groundcovers. Level changes will have seating edges and planting.



section c



SITE IMAGE
Landscape Architects

JACOBS

JOHNSTAFF



Health
Infrastructure

Former Ambulance Bay

The former ambulance bay area will have a central open lawn area making use of good solar access. Raised planter beds to the edge will screen surrounding buildings and provide seating opportunities. Paving will be a continuation of atrium and linking into stage 1 materiality.



Raised planter bed with screening shrubs grasses and groundcovers and seating edge

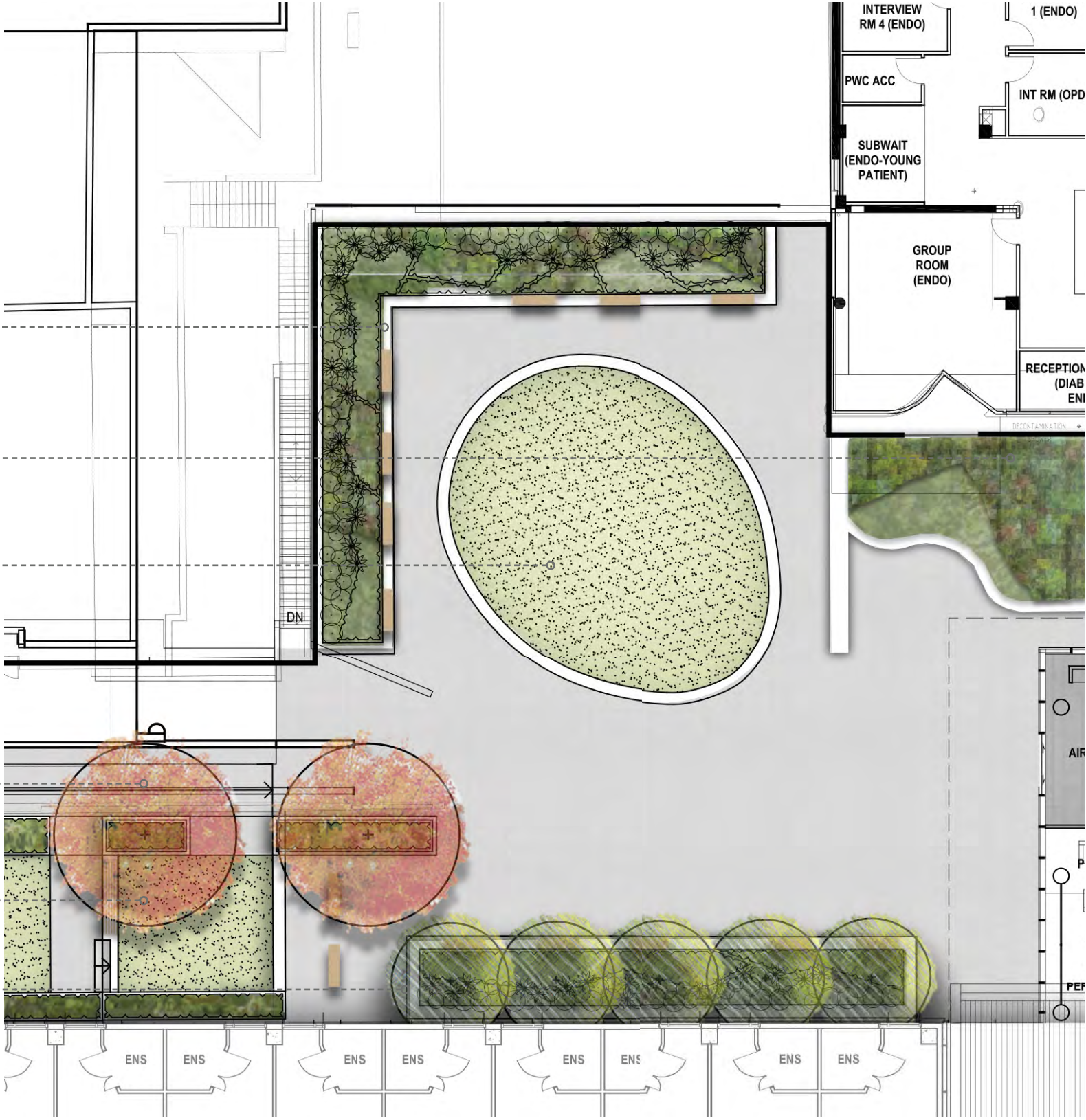
Raised planter bed with screening shrubs grasses and groundcovers

Central common turf area

Ramp from level 2 / Panorama Pde pedestrian entry

Landscape terraces

Raised planter bed with seating edge



Level 2 Atrium

The level 2 atrium indoor planting provides a green centre to the atrium. Planters located on either side of the staircase will have a variety to species suited to the indoor conditions.



Massed shade tolerant groundcover species
Climbers to steel cables for vertical greening
Feature tall planting. Planter sunken below FFL. Possible planting includes palms, trees suitable to atmospheric conditions.



section d



Drop Off Area

The entry forecourt will act as the central drop off point to the main entry. This space will deliver a sense of arrival and continuity through to the main atrium. Careful use of bollards and paving will separate pedestrian and vehicular uses. A central spine of planting adding colour and greening through to the pedestrian entries. Planting will be located to the end of the turn around are to discourage drop off at this location.

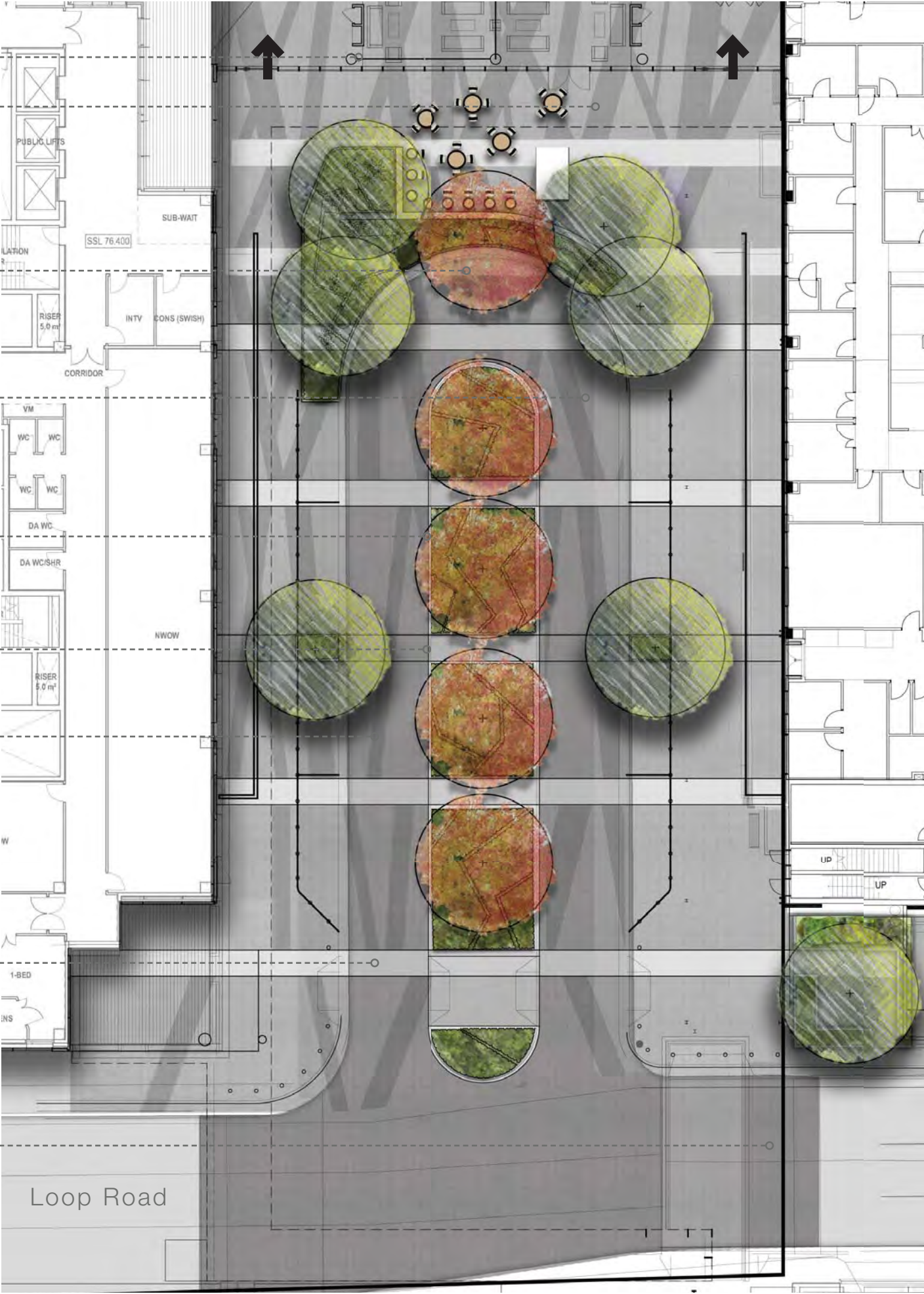


Footpath with bollard Drop off parking Drop off road way

Cental island planting

section e

- Atrium entries
- Cafe / kiosk seating area
- Planting to turn around zone
- Semi Mature feature trees to central median
- Transition between parking zone and roadway with change in texture and rolled kerb
- Trees in blisters
- Walkway from carparks over
- Feature banding to paving
- Pedestrian crossing to carparks



Planting Palette

Botanic Name	Common Name	Mature Size (h x w) (m)	Spacing	Pot Size
TREES				
Casuarina glauca	Swamp Oak	12 x 8	As Shown	45L
Corymbia maculata	Spotted Gum	30 x 8	As Shown	45L
Eucalyptus crebra	Narrow Leafed Ironbark	15 x 6	As Shown	45L
Eucalyptus eugenoides	Thin leaved stringybark	20 x 8	As Shown	45L
Eucalyptus tereticornis	Forest Red Gum	40 x 10	As Shown	45L
Nyssa sylvatica	Tupelo	12 x 6	As Shown	100L
Pistacia chinensis	Chinese Pistachio	8 x 4	As Shown	100L
Pyrus calleryana 'Capital'	Capital Ornamental Pear	11 x 3	As Shown	100L
SHRUBS & ACCENTS				
Acmena smithii var. minor	Lilly Pilly	2 x 2	As Shown	300mm
Buckinghamia celsissima	Ivory Curl Flower	6 x 3	As Shown	300mm
Correa alba	White Correa	1.5 x 1	As Shown	300mm
Callistemon 'Endeavour'		2x3	As Shown	300mm
Grevillea 'Moonlight'	Grevillea	2 x 1.5	As Shown	300mm
Nandina domestica 'Gulf Stream'	Dwarf Heavenly Bamboo	.75 x .5	As Shown	300mm
Phormium tenax 'Purpureum'	Bronze Flax	1.5 x 1	As Shown	300mm
Westringia fruticosa	Coastal Roasemary	2 x 2	As Shown	300mm
GRASSES AND GROUNDCOVERS				
Grevillea Bronze Rambler	Grevillea Bronze Rambler	.3 x 3	5/sqm	150mm
Gazania tomentosa		.15 x 1	5/sqm	150mm
Dianella caerulea 'Breeze'	Blue Flax Lily	0.6 x 0.6	5/sqm	150mm
Liriope muscari	Liriope	.4 x .4	5/sqm	150mm
Lomandra longifolia	Matt Rush	1 x 1	4/sqm	150mm
Myoporum parvifolium	Creeping Boobialla	.3 x 2	5/sqm	150mm
Pennisetum 'Nafray'	Swamp Foxtail Grass	.6 x .6	5/sqm	150mm
Trachelospermum jasminoides	Star Jasmine	0.3 x 0.3	5/sqm	150mm
TERRACE PLANTING				
Ajuga reptans 'Caitlins Giant'		.2 x 1	5/sqm	150mm
Alternanthera dentata 'Little Ruby'		.15 x .6	5/sqm	150mm
Alpinia zerumbet 'Variegata'	Variegated Shell Ginger	1 x 1	As Shown	150mm
Alcanrarea inoerialis 'Rubra'	Empress of Brazil	1.2 x 1.5	5/sqm	150mm
Aspidista elatior	Cast Iron Plant	.7 x .7	As Shown	150mm
Blechnum nudum	Fishbone Water Fern	.6 x .6	As Shown	150mm
Ctenanthe setosa 'Grey Star'	Grey Star Ctenanthe	1 x 1	As Shown	200mm
Dichondra repens	Kidney Weed	.1 x .5	5/sqm	150mm
Hibiscus tiliaceus	Cottonwood	8 x 4	As Shown	400L
Liriope muscari	Liriope	.4 x .4	5/sqm	150mm
Philodendron 'Xanadu'	Xanadu Philodendron	1 x 1	4/sqm	300mm
Rhapis excelsa	Lady Palm	2.5 x 1.5	As Shown	150mm
Viola hederacea	Native Violet	.15 x 1	5/sqm	150mm
Zamia furfuracea	Cardboard Palm	1 x 1	As Shown	300mm
MATRIX PLANTING				
Callistemon 'Little John'	Dwarf Bottle Brush	1 x 1	14/25sqm	150mm
Grevillea 'Moonlight'	Grevillea	2 x 1.5	12/25sqm	150mm
Grevillea Bronze Rambler	Grevillea Bronze Rambler	.3 x 3	6/25sqm	150mm
Lomandra longifolia	Matt Rush	1 x 1	32/25sqm	150mm
ATRIUM PLANTING				
Adonia merrillii	Christmas Palm	5 x 2	As Shown	200L
Ficus benjamina	The Weeping Fig	10 x 4	As Shown	1000L
Alocasia calidora	Elephant Ears	2 x 1	As Shown	300mm
Cissa antartica	Kangaroo Vine	6	5/m2	300mm
Epipremnum aureum	Devils Ivy	2	5/m2	300mm
Stephanotis floribunda	Madagascar Jasmine	3	5/m2	300mm

