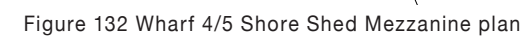
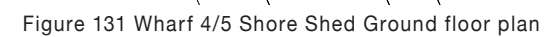


The existing tenancies within the Wharf 2/3 Shore Sheds contain a cafe, restaurant and a function centre. While they fall outside the scope of works, they will contribute to the activation of the precinct. The remaining Wharf 4/5 Shore Sheds will be refurbished to contain:

- The Philharmonia and Gondwana Choirs and The Song Company rehearsal spaces will be refurbished with a new mezzanine over to provide offices for their administration
- Pier 2/3 waste room
- Services rooms
- Commercial tenancy
- STC workshops to upper shed.

- Reconfigured entry to Wharf 4/5, including a new STC Box Office/Welcome Centre to improve the entry sequence.
- New commercial space facing the SDC cafe
- Precinct amenities
- Service rooms
- STC workshops to upper shed.

- Precinct Manager office in the western tenancy
- Wharf 4/5 waste room
- Secure bicycle store
- Commercial tenancy
- STC workshops to upper shed.



-

6.0 EXTERIOR DESIGN

6.1 PIER 2/3 EAST ELEVATION

The eastern elevation of Pier 2 provides a principal entrance to the precinct via the axial bridge and existing colonnade. The existing building facade has a chequerboard pattern of sliding cargo doors which open up to provide panoramic views of the Sydney Harbour Bridge.

The following facade interventions are proposed:

- Cargo doors on the upper and lower floors are to remain operable. Glazing is to be installed to the full extent of the opening.

This will enable flexibility to provide panoramic views of Sydney Harbour Bridge from the internal spaces and also shut them off for possible performance and event scenarios.

- At three key locations, generous steel framed balconies provide breakout space from the internal public areas. The design of these balconies echoes the form and detailing of the original gantries
- The northernmost balcony includes steel framed stairs which provide access to the Level 1 function space.

- An elevated walkway is proposed within the colonnade, at the level of the interior, providing safe pedestrian access separated from service vehicles at the lower apron level.
- A new canopy is proposed on the east facade above the loading area in order to provide shelter for the safe movement of goods. The canopy will be a contemporary element that interprets historical loading platforms that were present.
- Replacement of the existing metal infill panels to every second highlight over the cargo doors with timber framed windows to match the original.



Figure 133 Existing east elevation Pier 2/3.



Figure 134 Proposed east elevation Pier 2/3, (alterations shown in blue).

6.2 PIER 2/3 WEST ELEVATION

The western elevation of Pier 3 provides the ‘public’ face of Pier 2/3 presenting to the new waterfront square. The existing building has an alternating pattern of solid panels and cargo doors at ground level, and a solid wall to the upper shed where there were originally cargo doors.

The following facade interventions are proposed:

- Cargo doors on the lower floor are to remain operable. Openable portions of glazing are to be installed to the full extent of the openings connecting the interior to the public domain.

- Three new steel framed balconies with associated stairs are proposed in front of the primary public spaces to provide access and aegress.
- On the upper level the proposal opens up alternate facade bays to respect the checkerboard rhythm of the building. In some locations the new openings are screened with louvres adapted from the existing sidings to mimic the solidity of the existing facade to provide privace and sun shading.



Figure 135 Existing west elevation Pier 2/3.



Figure 136 Proposed west elevation Pier 2/3, (alterations shown in blue).

6.3 WHARF 4/5 EAST ELEVATION

Alterations to the facade of Wharf 4/5 relate to the internal works associated with both the Walsh Bay Arts Precinct and STC50 projects.

At the lower level the following works are proposed:

- At Sydney Dance Company the facade is proposed to be modified at the Cafe and Board Room to better activate the Waterfront Square. New glazing is proposed to the cargo doors or Studio 5.

- Bangarra Dance Theatre will have a new entrance and new glazing in the alternate bays of sliding cargo doors, opening up the foyer and main studio to the Wharf 4 apron.
- Two new steel framed glazed lifts are proposed to connect the Wharf apron to the Sydney located in the upper shed.
- Two new steel framed gantry balconies and stairs are also proposed. These elements will be detailed in a similar manner to those on Pier 2/3.



Figure 137 Existing East elevation Wharf 4/5.

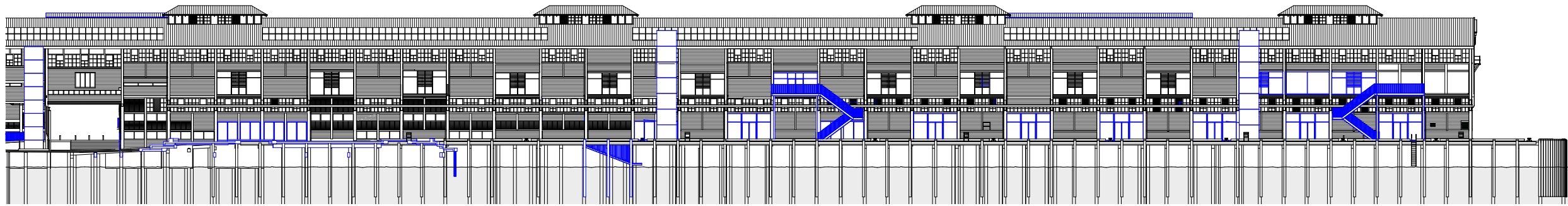


Figure 138 Proposed East elevation Wharf 4/5, (alterations shown in blue).