

Pier 2/3 Walsh Bay Survey of Industrial Items

Zone

Item

Standard item ☐

Description

Zone number

Level

Transverse

Number of items

Condition

Photograph

Number

238



Pier 2/3 Walsh Bay Survey of Industrial Items

Zone	Entrance Driveway	Zone number	8
Item	Stencilled office window	Level	G
Standard item	<input type="checkbox"/>	Transverse	East
Description	Stencilled window pattern. To be recorded.	Number of items	1
		Condition	P
		Photograph	
		Number	239



Pier 2/3 Walsh Bay Survey of Industrial Items

Zone	Ground	Zone number	8
Item	Major strong back	Level	G
Standard item	<input checked="" type="checkbox"/>	Transverse	All
Description	Riveted steel strongback.		
		Number of items	
		Condition	G
		Photograph	
		Number	240



Pier 2/3 Walsh Bay Survey of Industrial Items

Zone

Item

Standard item ☒

Description

Enamelled pendant light shade.

Zone number

Level

Transverse

Number of items

Condition

Photograph

Number

241



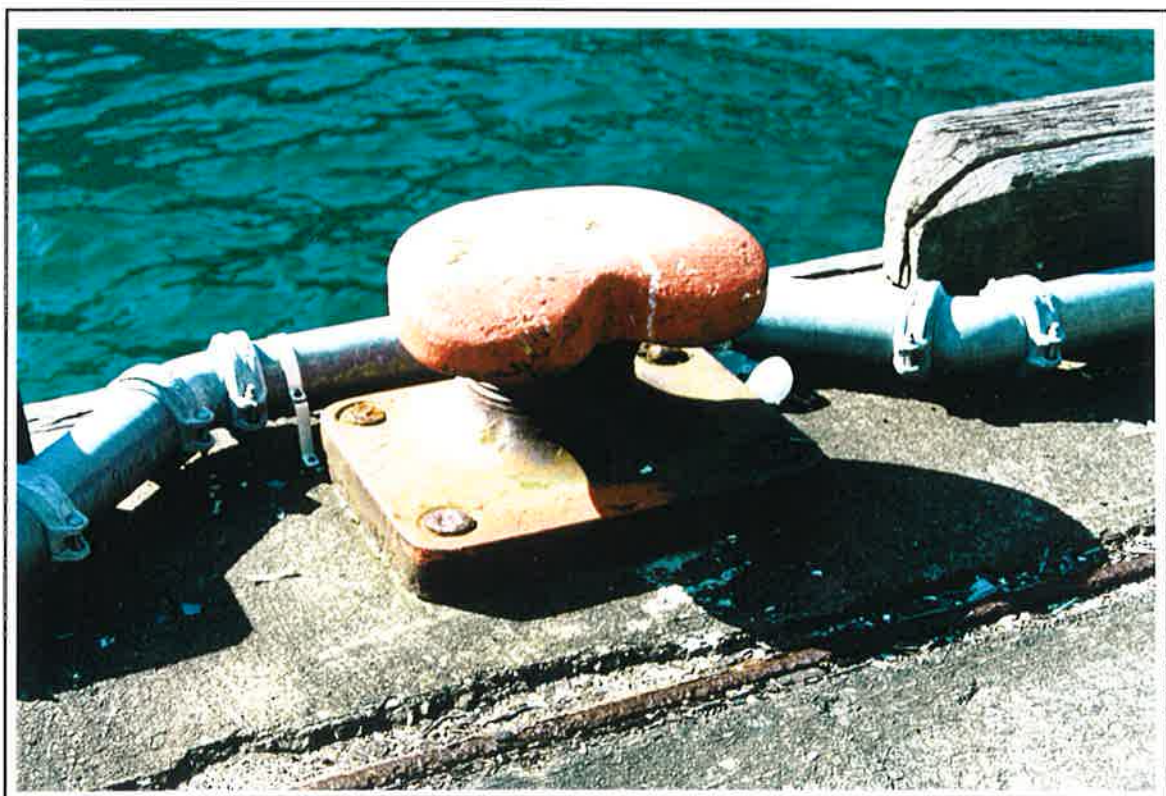
Pier 2/3 Walsh Bay Survey of Industrial Items

Zone	<input type="text" value="Apron East"/>	Zone number	<input type="text" value="8"/>
Item	<input type="text" value="Web plate"/>	Level	<input type="text" value="G"/>
Standard item	<input checked="" type="checkbox"/>	Transverse	<input type="text" value="East"/>
Description	<input type="text" value="Riveted steel web plate used on the east colonnade."/>		
		Number of items	<input type="text" value=""/>
		Condition	<input type="text" value="G"/>
		Photograph	<input type="text" value=""/>
		Number	242



Pier 2/3 Walsh Bay Survey of Industrial Items

Zone	<input type="text" value="Aprons"/>	Zone number	<input type="text" value="8"/>
Item	<input type="text" value="Bollards"/>	Level	<input type="text" value="G"/>
Standard item	<input checked="" type="checkbox"/>	Transverse	<input type="text" value="Both sides"/>
Description	<input type="text" value="Cast steel mooring bollards."/>	Number of items	<input type="text" value=""/>
		Condition	<input type="text" value="G"/>
		Photograph	<input type="text" value=""/>
		Number	243



Pier 2/3 Walsh Bay Survey of Industrial Items

Zone	<div>Apron East</div>	Zone number	<div>8</div>
Item	<div>Gantry Rail (travelling gantry)</div>	Level	<div>G</div>
Standard item	<input type="checkbox"/>	Transverse	<div>East</div>
Description	<div>Gantry rail set into the apron.</div>	Number of items	<div>1</div>
		Condition	<div>M</div>
		Photograph	<div></div>
		Number	244



Pier 2/3 Walsh Bay Survey of Industrial Items

Zone	<input type="text" value="Aprons"/>	Zone number	<input type="text" value="8"/>
Item	<input type="text" value="Apron lights"/>	Level	<input type="text" value="G"/>
Standard item	<input checked="" type="checkbox"/>	Transverse	<input type="text" value="Apron"/>
Description	<input type="text" value="Fluorescent apron lights."/>	Number of items	<input type="text" value=""/>
		Condition	<input type="text" value="G"/>
		Photograph	<input type="text" value=""/>
		Number	245



Pier 2/3 Walsh Bay Survey of Industrial Items

Zone

Item

Gantry rail (upper) (travelling gantry)

Standard item

☐

Description

Gantry rail fixed onto riveted brackets at the upper floor level.

Zone number

8

Level

1

Transverse

East

Number of items

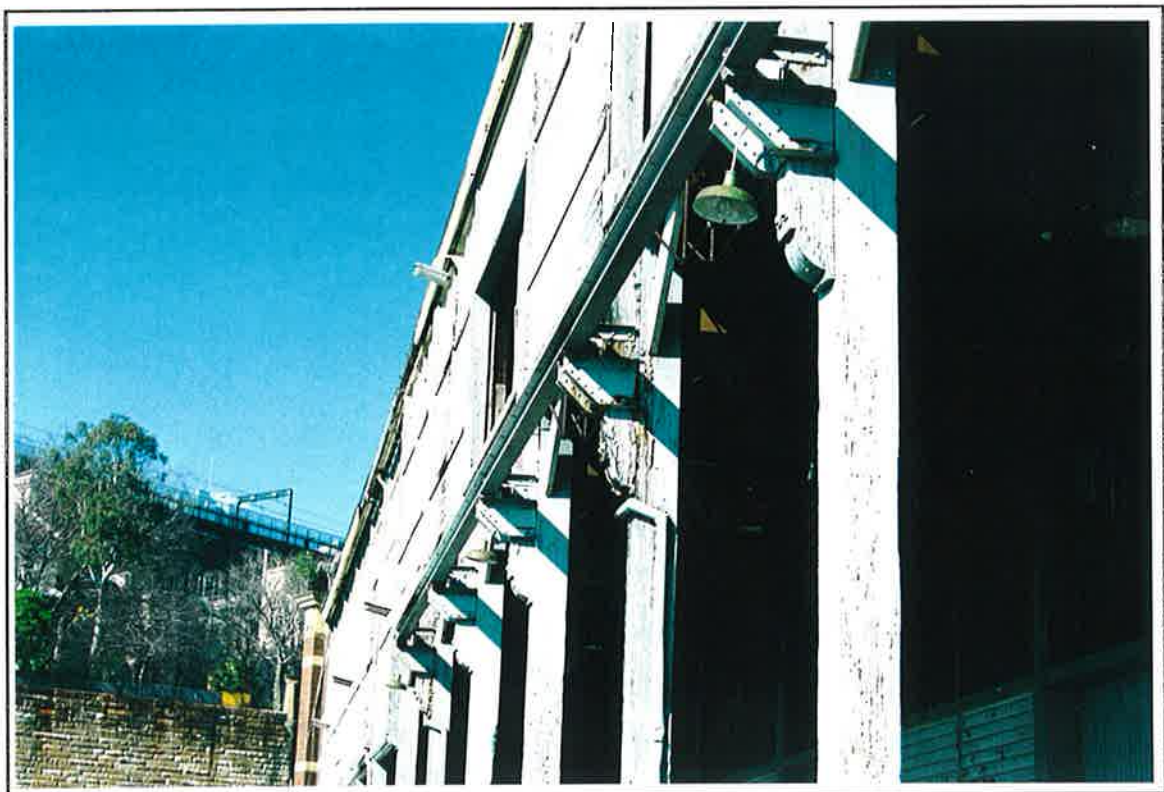
Condition

G

Photograph

Number

246



Pier 2/3 Walsh Bay Survey of Industrial Items

Zone

Item

Standard item ☒

Description

Zone number

Level

Transverse

Number of items

Condition

Photograph

Number

247



Pier 2/3 Walsh Bay Survey of Industrial Items

Zone

Item

Standard item ☒

Description

Cargo doors, on the east they open onto at truck loading height

Zone number

Level

Transverse

Number of items

Condition

Photograph

Number

248



Pier 2/3 Walsh Bay Survey of Industrial Items

Zone

Zone number

Item

Level

Standard item ☒

Transverse

Description

Timber wall mounted life preserver boxes.

Number of items

Condition

Photograph

Number

249



Pier 2/3 Walsh Bay Survey of Industrial Items

Zone

Item

Standard item ☐

Description

Zone number

Level

Transverse

Number of items

Condition

Photograph

Number

250



Pier 2/3 Walsh Bay Survey of Industrial Items

Zone

Item

Standard item ☒

Description

Zone number

Level

Transverse

Number of items

Condition

Photograph

Number

251



Pier 2/3 Walsh Bay Survey of Industrial Items

Zone

Item

Standard item ☒

Description

Zone number

Level

Transverse

Number of items

Condition

Photograph

Number

252



Pier 2/3 Walsh Bay Survey of Industrial Items

Zone

Zone number

Item

Level

Standard item ☒

Transverse

Description

Marker plates fixed to the apron curb designating pier lengths.

Number of items

Condition

Photograph

Number

253



Pier 2/3 Walsh Bay Survey of Industrial Items

Zone

Item

Standard item ☐

Description

Timber shipping fenders fixed to the
end corners of the pier

Zone number

Level

Transverse

Number of items

Condition

Photograph

Number

254



Pier 2/3 Walsh Bay Survey of Industrial Items

Zone	<div>Aprons</div>	Zone number	<div>8</div>
Item	<div>Truck loading ramp</div>	Level	<div>G</div>
Standard item	<input type="checkbox"/>	Transverse	<div>North</div>
Description	<div>Truck loading ramp on the north end apron.</div>	Number of items	<div>1</div>
		Condition	<div>G</div>
		Photograph	<div></div>
		Number	255



Pier 2/3 Walsh Bay Survey of Industrial Items

Zone	Upper Floor	Zone number	8
Item	Wharf numbers	Level	1
Standard item	<input type="checkbox"/>	Transverse	Both sides
Description	Painted pier numbers on the northern facade "2 & 3"	Number of items	2
		Condition	M
		Photograph	
		Number	256



Pier 2/3 Walsh Bay Survey of Industrial Items

Zone

Zone number

Item

Level

Standard item ☐

Transverse

Description

Flag pole and balcony platform used for raising flags.

Number of items

Condition

Photograph

Number

257



Pier 2/3 Walsh Bay Survey of Industrial Items

Zone

Item

Standard item ☒

Description

Zone number

Level

Transverse

Number of items

Condition

Photograph

Number

258



Pier 2/3 Walsh Bay Survey of Industrial Items

Zone

Item

Standard item ☐

Description

Zone number

Level

Transverse

Number of items

Condition

Photograph

Number

259



Pier 2/3 Walsh Bay Survey of Industrial Items

Zone

Zone number

Item

Level

Standard item ☒

Transverse

Description

Number of items

Condition

Photograph

Number

260



Pier 2/3 Walsh Bay Survey of Industrial Items

Zone

Zone number

Item

Level

Standard item ☒

Transverse

Description

Number of items

Condition

Photograph

Number

261



Pier 2/3 Walsh Bay Survey of Industrial Items

Zone

Item

Standard item ☒

Description

Zone number

Level

Transverse

Number of items

Condition

Photograph

Number

262



Pier 2/3 Walsh Bay Survey of Industrial Items

Zone

Item

Standard item ☐

Description

Zone number

Level

Transverse

Number of items

Condition

Photograph

Number

263



Pier 2/3 Walsh Bay Survey of Industrial Items

Zone Apron West

Item Customs Office

Standard item ☐

Description

Shoreshed Customs office and awning.

Zone number

8

Level

G

Transverse

West

Number of items

1

Condition

M

Photograph

Number

264



Pier 2/3 Walsh Bay Survey of Industrial Items

Zone

Apron West

Item

Customs Office

Standard item

☐

Description

"H M Customs" signwriting at the entrance door.

Zone number

8

Level

G

Transverse

West

Number of items

1

Condition

M

Photograph

Number

265



Pier 2/3 Walsh Bay Survey of Industrial Items

Zone

Aprons

Item

Power switches

Standard item



Description

Power switches fixed to the storey posts on the exterior of the building.

Zone number

8

Level

G

Transverse

Apron

Number of items

Condition

M

Photograph

Number

266



Pier 2/3 Walsh Bay Survey of Industrial Items

Zone

Item

Standard item ☐

Description

Zone number

Level

Transverse

Number of items

Condition

Photograph

Number

267



Pier 2/3 Walsh Bay Survey of Industrial Items

Zone

Item

Standard item ☐

Description

Painted bay numbers.

Zone number

Level

Transverse

Number of items

Condition

Photograph

Number

268



Pier 2/3 Walsh Bay Survey of Industrial Items

Zone

Zone number

Item

Level

Standard item ☒

Transverse

Description

Number of items

Condition

Photograph

Number

269



Pier 2/3 Walsh Bay Survey of Industrial Items

Zone	Ground	Zone number	8
Item	Entrance roller door	Level	G
Standard item	<input type="checkbox"/>	Transverse	South
Description	Steel slatted pedestrian door to Hickson Road.		
		Number of items	1
		Condition	
		Photograph	
		Number	270



Pier 2/3 Walsh Bay Survey of Industrial Items

Zone

Zone number

Level

Item

Transverse

Standard item ☐

Description

Timber change room lockers with built in bench seat.

Number of items

Condition

Photograph

Number

271



Pier 2/3 Walsh Bay Survey of Industrial Items

Zone

Item

Standard item ☐

Description

Enamelled cast iron sink fixed to the
storey post.

Zone number

Level

Transverse

Number of items

Condition

Photograph

Number

272



Pier 2/3 Walsh Bay Survey of Industrial Items

Zone

Item

Standard item ☐

Description

Zone number

Level

Transverse

Number of items

Condition

Photograph

Number

273



Pier 2/3 Walsh Bay Survey of Industrial Items

Zone

Item

Standard item ☐

Description

Zone number

Level

Transverse

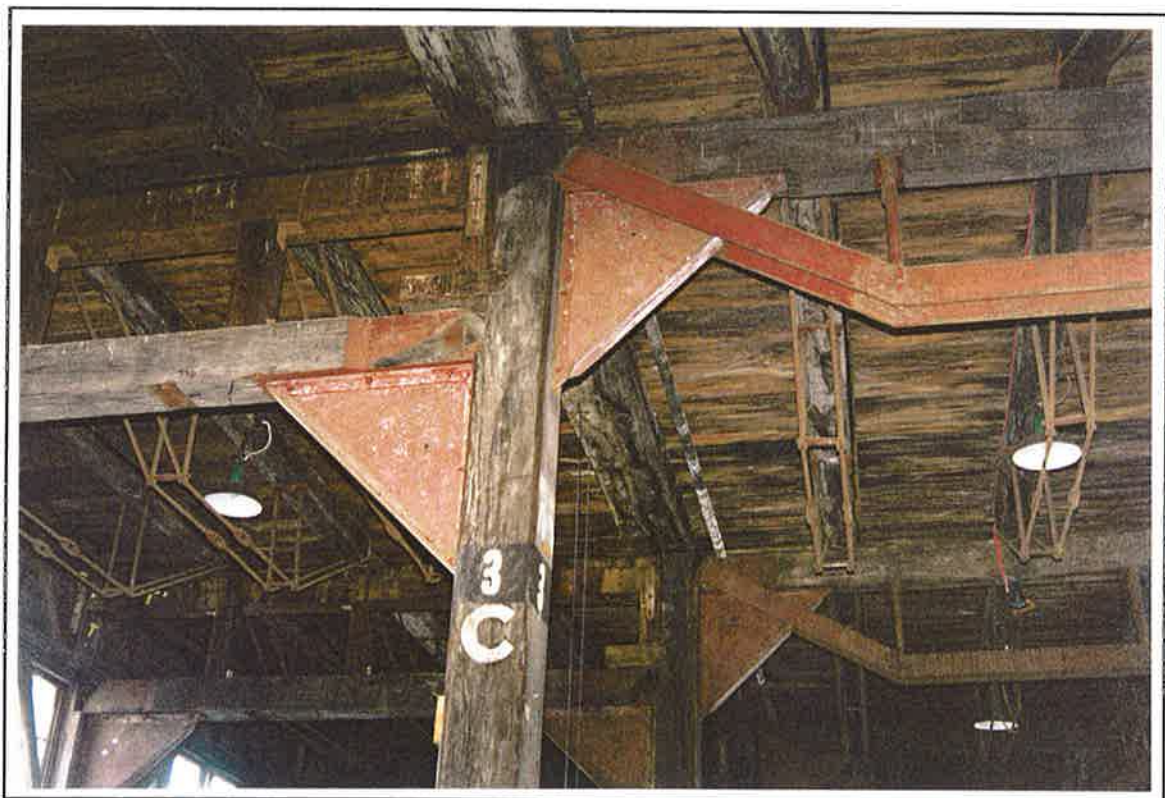
Number of items

Condition

Photograph

Number

274



Pier 2/3 Walsh Bay Survey of Industrial Items

Zone

Zone number

Item

Level

Standard item ☐

Transverse

Description

Timber frames constructed within the walls to take the load being stored within the building. They are placed at all wall panels within the building where goods were stored. The sliding timber doors slide behind the frames.

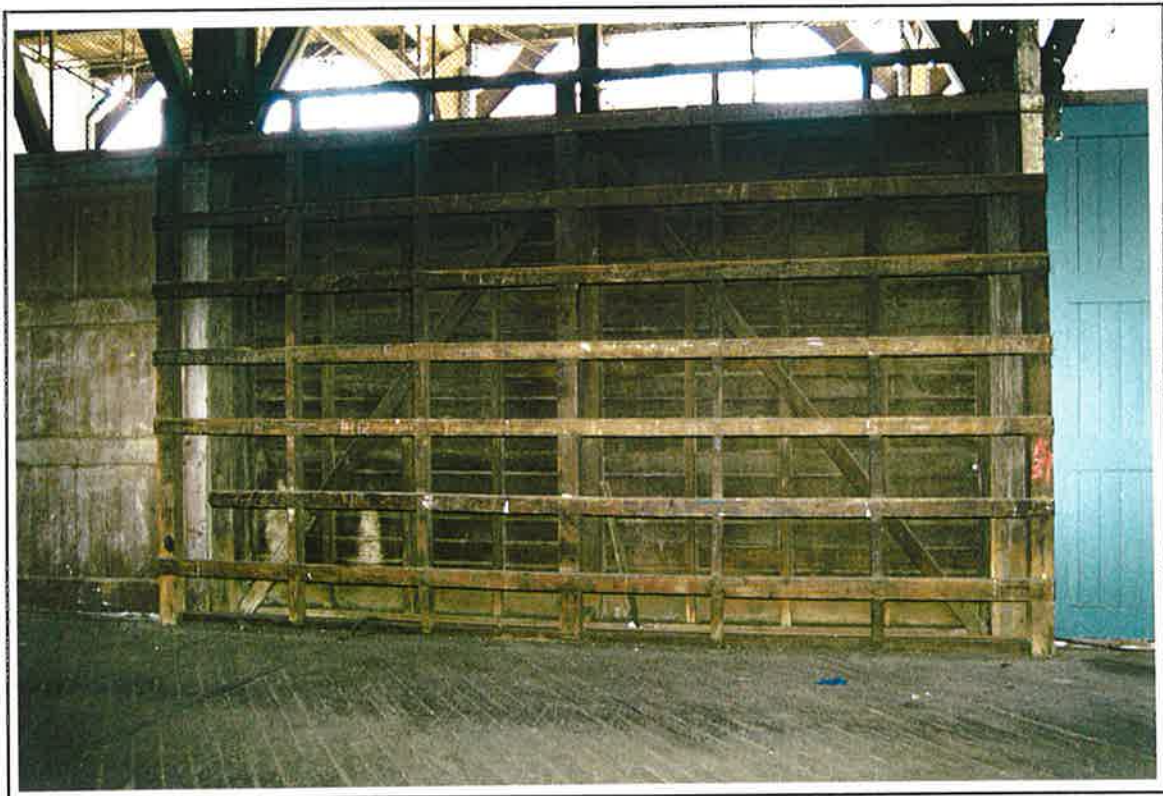
Number of items

Condition

Photograph

Number

275



Pier 2/3 Walsh Bay Survey of Industrial Items

Zone

Item

Standard item ☐

Description

A timber slatted partition wall with a slatted timber sliding gates. The rails & runners for the door are intact. The wall is of a similar construction to the deadhouses.

Zone number

Level

Transverse

Number of items

Condition

Photograph

Number

276



Pier 2/3 Walsh Bay Survey of Industrial Items

Zone

Item

Standard item ☐

Description

Open slatted timber chute with door opening to the east wall onto the apron.
Master list number 89

Zone number

Level

Transverse

Number of items

Condition

Photograph

Number

277



Pier 2/3 Walsh Bay Survey of Industrial Items

Zone

Item

Standard item ☒

Description

Zone number

Level

Transverse

Number of items

Condition

Photograph

Number

278



Pier 2/3 Walsh Bay
Survey of Industrial Items

Zone	Upper Floor	Zone number	8
Item	Timber stairs and kerbing	Level	G - 1
Standard item	<input type="checkbox"/>	Transverse	Centre
Description	Slatted timber stairwell with kerbing on the upper level.		
		Number of items	1
		Condition	G
		Photograph	
		Number	279



Pier 2/3 Walsh Bay Survey of Industrial Items

Zone

Zone number

Level

Item

Transverse

Standard item ☒

Description

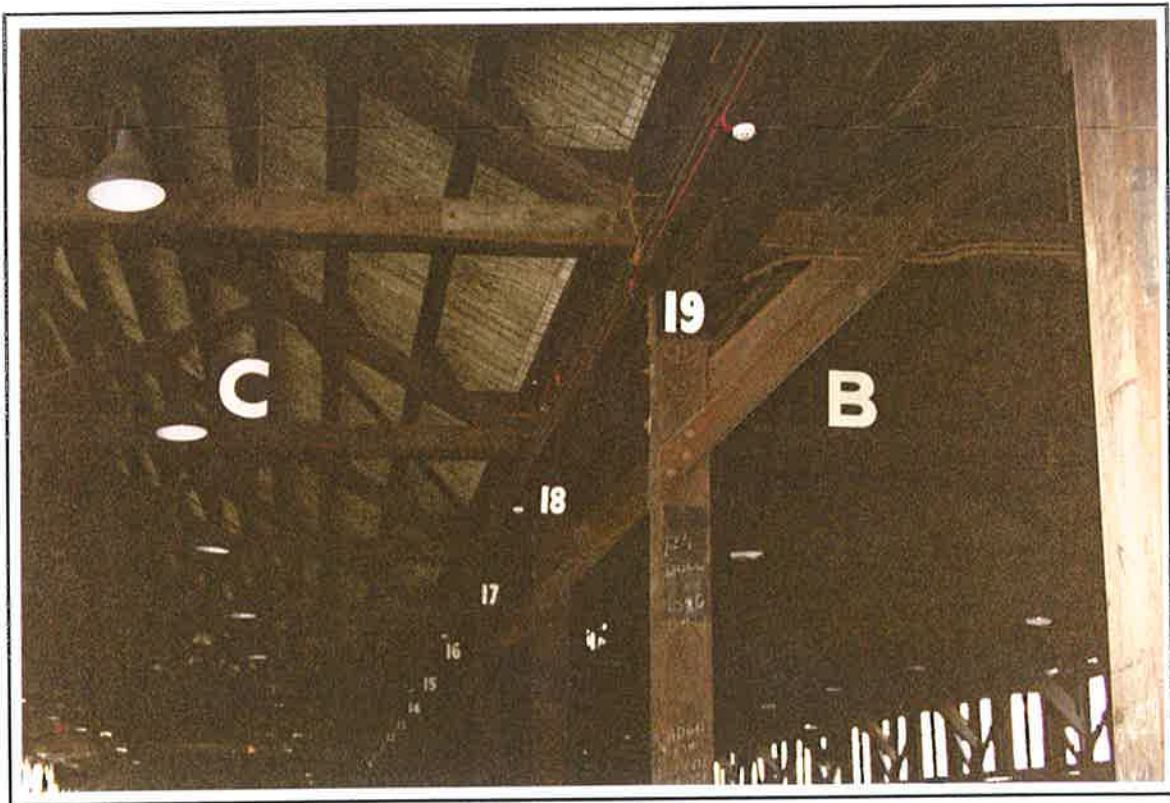
Number of items

Condition

Photograph

Number

280



Pier 2/3 Walsh Bay Survey of Industrial Items

Zone

Item

Standard item ☒

Description

Zone number

Level

Transverse

Number of items

Condition

Photograph

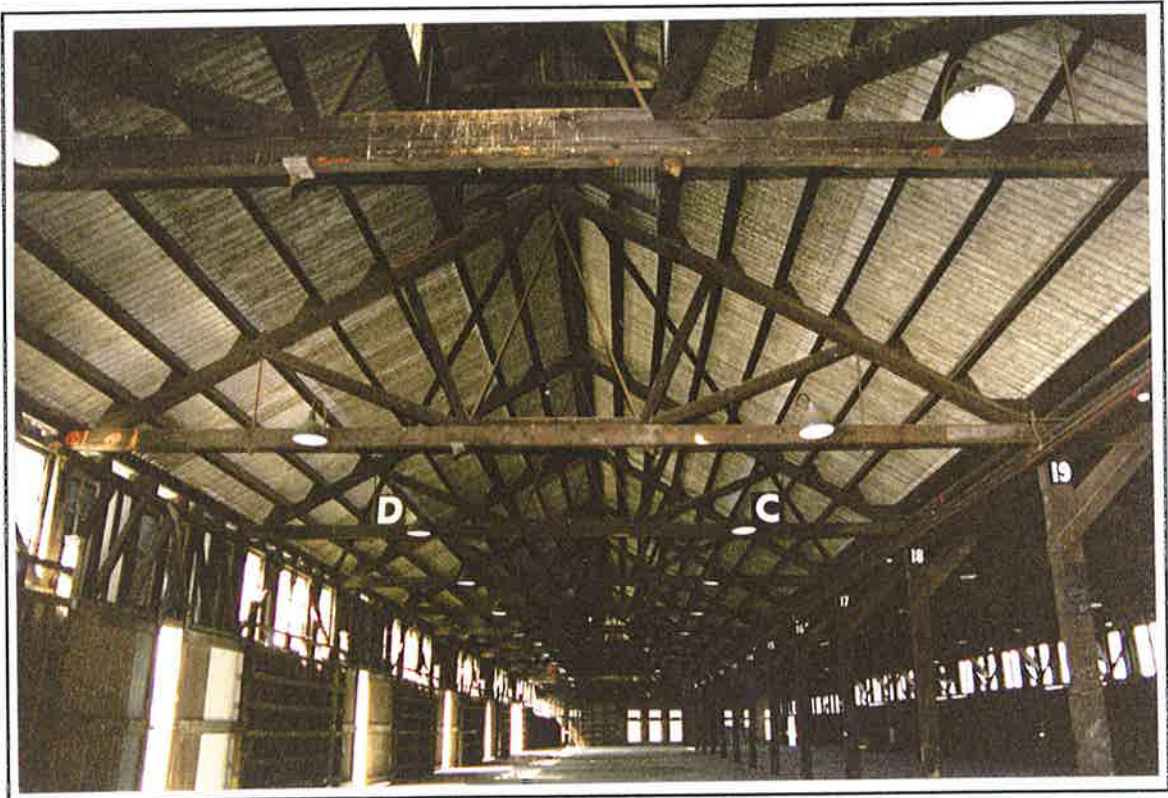
Number

281



Pier 2/3 Walsh Bay Survey of Industrial Items

Zone	Upper Floor	Zone number	8
Item	Truss signage	Level	1
Standard item	<input checked="" type="checkbox"/>	Transverse	Centre
Description	Painted bay numbers.	Number of items	
		Condition	G
		Photograph	
		Number	288



Pier 2/3 Walsh Bay Survey of Industrial Items

Zone

Zone number

Item

Level

Standard item ☒

Transverse

Description

Number of Items

Condition

Photograph

Number

289



Pier 2/3 Walsh Bay Survey of Industrial Items

Zone

Item

Standard item ☒

Description

Zone number

Level

Transverse

Number of items

Condition

Photograph

Number

290



Pier 2/3 Walsh Bay Survey of Industrial Items

Zone

Zone number

Item

Level

Standard item ☐

Transverse

Description

Painted artwork left from the last Biennial exhibition.

Number of items

Condition

Photograph

Number

291



Pier 2/3 Walsh Bay Survey of Industrial Items

Zone

Zone number

Item

Level

Standard item ☒

Transverse

Description

Timber frames constructed within the walls to take the load being stored within the building. They are placed at all wall panels within the building where goods were stored. The sliding timber doors slide behind the frames.

Number of items

Condition

Photograph

Number

292



Pier 2/3 Walsh Bay Survey of Industrial Items

Zone

Zone number

Item

Level

Standard item ☐

Transverse

Description

Timber slatted room with a timber slatted sliding door for storing bonded goods.

Number of items

Condition

Photograph

Number

293

Pier 2/3 Walsh Bay Survey of Industrial Items

Zone

Item

Standard item ☐

Description

Zone number

Level

Transverse

Number of items

Condition

Photograph

Number

294



Pier 2/3 Walsh Bay Survey of Industrial Items

Zone	Upper Floor	Zone number	8
Item	Stone gate post	Level	1
Standard item	<input type="checkbox"/>	Transverse	South
Description	Remnant sections.	Number of items	
		Condition	M
		Photograph	
		Number	295



Pier 2/3 Walsh Bay Survey of Industrial Items

Zone	Upper Floor	Zone number	8
Item	Gate keepers office	Level	1
Standard item	<input type="checkbox"/>	Transverse	South
Description	Timber office building at the entrance to the shoreded.	Number of items	1
		Condition	M
		Photograph	
		Number	296



Pier 2/3 Walsh Bay Survey of Industrial Items

Zone	Upper Floor	Zone number	8
Item	Gents toilets	Level	1
Standard item	<input type="checkbox"/>	Transverse	South
Description	Brick rendered toilet building with painted sign. Later addition.		
		Number of items	1
		Condition	M
		Photograph	
		Number	297



Pier 2/3 Walsh Bay Survey of Industrial Items

Zone	Upper Floor	Zone number	8
Item	Truck ramp (east)	Level	1
Standard item	<input type="checkbox"/>	Transverse	South
Description	Built when the floor on the east side of the pier shed was raised.		
		Number of items	1
		Condition	M
		Photograph	
		Number	298



Pier 2/3 Walsh Bay Survey of Industrial Items

Zone

Item

Standard item ☐

Description

Zone number

Level

Transverse

Number of items

Condition

Photograph

Number

299



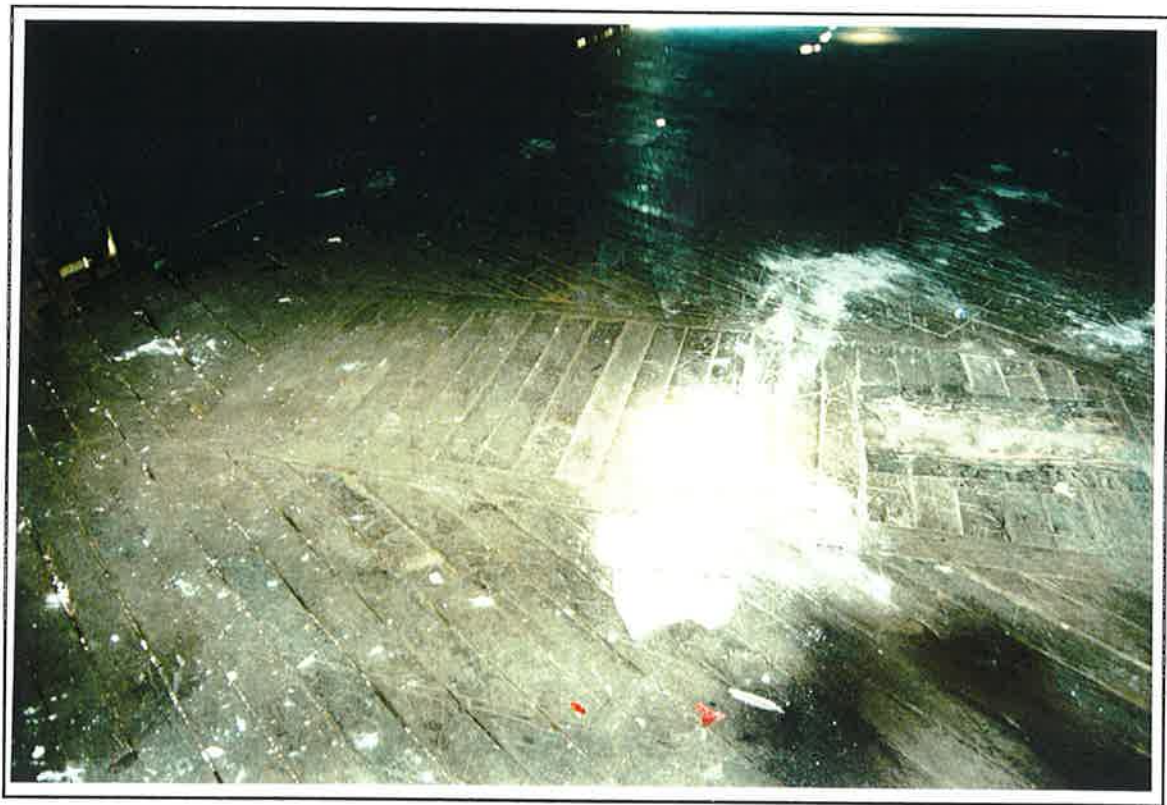
Pier 2/3 Walsh Bay Survey of Industrial Items

Zone	<input type="text" value="Ground"/>	Zone number	<input type="text" value="8"/>
Item	<input type="text" value="Toilet sign"/>	Level	<input type="text" value="1"/>
Standard item	<input type="checkbox"/>	Transverse	<input type="text" value="Centre"/>
Description	<input type="text" value="Painted toilet sign."/>	Number of items	<input type="text" value="1"/>
		Condition	<input type="text" value="G"/>
		Photograph	<input type="text" value=""/>
		Number	300



Pier 2/3 Walsh Bay Survey of Industrial Items

Zone	Upper Floor	Zone number	8
Item	Floor hatches	Level	1
Standard item	<input checked="" type="checkbox"/>	Transverse	Centre
Description	Indicate where previous wharf activities took place.		
		Number of items	
		Condition	G
		Photograph	
		Number	301



Pier 2/3 Walsh Bay Survey of Industrial Items

Zone

Item

Standard item ☒

Description

Zone number

Level

Transverse

Number of items

Condition

Photograph

Number

302



Pier 2/3 Walsh Bay Survey of Industrial Items

Zone

Zone number

Item

Level

Standard item ☒

Transverse

Description

Timber slatted room with a timber slatted sliding door for storing bonded goods.

Number of items

Condition

Photograph

Number

303



Pier 2/3 Walsh Bay Survey of Industrial Items

Zone

Zone number

Item

Level

Standard item ☒

Transverse

Description

Number of items

Condition

Photograph

Number

304



Appendix H

WALSH BAY REDEVELOPMENT PROJECT



MEMORANDUM

Phone: (02) 9338 7903

Fax: (02) 9338 7912

Project Management
Group
Level 5, 234 Sussex
Street
Sydney, NSW 2000.

PROJECT	WALSH BAY REDEVELOPMENT PROJECT	File:
TO	MA	DATE: 17 July 2007
ATTENTION	John Sturday, Christine Gunn	
DISTRIBUTION 1 2 3		
SUBJECT :	Heritage Items in Pier 2/3	
SIGNED:	Rees Mackay	

WBF stored all the recovered heritage items which were not used in interpretive displays throughout the redevelopment in Pier 2/3. Although the items stored would have been identified in the CMP's for each site as they were discovered, there is no single list of the items now in Pier 2/3. It is also probable that some items have been lost or mislaid, and that some items preserved have not been recorded.

In principle, there are 3 groups of items –

1. Items stored in the container near the new internal stair. These comprise hundreds of small items discovered by archaeologists in the Pottinger St, Bond 4 East (now Parbury) and Towns Place sites. They largely comprise shards of glass, pottery, china, pipes, bottles and many unidentified items, and were catalogued by the archaeologists. Some of the items such as china bowls were pieced together by the archaeologists. As I recall, the catalogue was on 2 discs submitted to MA quite some time ago.
2. Large items returned from storage by WBF, generally on the upper level of Pier 2/3. These include large pieces of machinery, cargo doors, hatches, stairways, and large pieces of timber, some of which were treated and conserved by WBF. These items are listed, but the file is in archives.
3. Unlisted items stored on deck level of Pier 2/3. They generally comprise miscellaneous items retrieved from a number of sites, including Pier 2/3; and include light fittings, support brackets for rainheads, items of builder's hardware, pile sections, pieces of stone, panels of batten walls from dead houses, trolleys, bale press and other handling equipment.

Under PDA Clause 27.9 all artefacts are the absolute property of the Maritime Authority. Generally speaking, the Conservation Management Plans and Heritage Office allow and require for all items to be preserved and interpreted. However, there may be the opportunity to review and cull the inventory as the design for re-use and fitout is completed. Before the items in Group 2 above were returned to Walsh Bay they were reviewed by the Heritage Office and slightly culled, and it was stated that further culling would not be considered until a plan for re-use was prepared. The WBF Heritage Consultants will include some of the items in the interpretive displays in Bond Store 1, and other lease holders in the area may choose to display items.

It is necessary that the architects concerned with the re-use and fitout of Pier 2/3 give active consideration to the re-use and/or display of as many of the preserved items as possible, and only when a viable and extensive plan is presented will the Heritage Office consider approving any further culling.

Many of the large items can be incorporated into the building, for example -

- The large hydraulic hoist is an important item of industrial cargo handling and should be installed on the outside of the building at a convenient location beside one of the cargo doors.
- The timber stairways, although too steep for general use, may be used for access to elevated service areas and plant rooms.
- The cargo doors could be re-used as operable walls if spaces are large enough.
- Other cargo doors and sections of dead house walls can be used as partitions or facing panels on new walls.
- Smaller doors, light fittings and miscellaneous builders hardware items can be re-used in appropriate locations.
- Non specific pieces of timber or built up pieces can be recycled for furniture or panelling. For example, an access hatch could be used as a bench or a table.
- The rainhead support brackets should be preserved for re-use on Pier 4/5 when the existing modern rainheads require replacing, at which time the original rainheads can be reproduced. The remains of a rainhead in Pier 2/3 should be preserved for use as a pattern.

Some items will be difficult to re-use due to their size and weight –

- The gantry crane is a bulky piece of machinery, but as it should be mounted at a high level it may be possible to include it the top of a foyer. It may be appropriate for an industrial heritage expert to advise on its rarity before proceeding.
- The built up steel beam is a rivetted fabrication displaying interesting scale and thickness variation according to stress levels, but may be too large and heavy to re-use. It is most unlikely that it will be required structurally, but it could be used as a feature item or as a partition or balustrade. It might be considered inappropriate for structural use in a timber building, and as similar rivetted fabrications can be seen elsewhere, eg the Harbour Bridge, it may be possible to cull this item.

Depending on the use and fitout of the building, many of the other items may be used in small interpretive displays throughout the building, but I cannot see many of the small items stored in the container being of sufficient interest or suitability to display, and it will be necessary for expert advice to be obtained for their culling or relocation.