

10.0 Appendices

Appendix A Catalogue of items stored at Walsh Bay Pier 2/3.

Appendix B Memorandum from Rees Mackay, NSW Department of Commerce, to the Maritime Authority, 17 July 2007.

Appendix C Austral Archaeology Pty Ltd, *Archaeological Monitoring Programme at Towns Place*, prepared for Walsh Bay Finance Pty Ltd, December 2005.

Appendix A

Catalogue of items stored at Walsh Bay Pier 2/3

Location—Lower level and dead house



Item # 1	Name Timber Gates (2)
	Provenance Walsh Bay Wharves Precinct
Significance Moderate	Comments Timber slats.
Management Consider for interpretation and retain examples as part of a collection of Walsh Bay movable heritage, as per Management Recommendation 2 for items of Moderate significance.	



Item # 2	Name Metal Gates (2)
	Provenance Unknown
Significance Low	Comments None.
Management Retain an example of this item as part of a collection of Walsh Bay movable heritage for future re-use, as per Management Recommendation 2 for items of Low significance.	



Item # 3	Name Metal Fence
	Provenance Unknown
Significance Low	Comments Galvanized wire fence.
Management Retain an example of this item as part of a collection of Walsh Bay movable heritage for future re-use, as per Management Recommendation 2 for items of Low significance.	



Item # 4	Name Boxing Posters
	Provenance Towns Place
Significance Low	Comments From gym formerly at Towns Place.
Management The items should be retained as per the recommendations of the Austral Archaeological Monitoring Programme report 2005.	



Item # 5	Name Unused interpretation signage
	Provenance Towns Place
Significance None	Comments Contained in a box marked 'Lester Tropman'.
Management The items should be retained as per the recommendations of the Austral Archaeological Monitoring Programme report 2005.	



Item # 6	Name Wooden Pile with Iron Casing
	Provenance Walsh Bay Wharves Precinct
Significance Moderate	Comments None
Management Consider for interpretation and retain as part of a collection of Walsh Bay movable heritage, as per Management Recommendation 2 for items of Moderate significance.	



Item # 7	Name WT Avery Scale
	Provenance Walsh Bay Wharves Precinct
Significance Moderate	Comments Platform scale, red and black. Platform cracked.
Management Consider for interpretation and retain as part of a collection of Walsh Bay movable heritage, as per Management Recommendation 2 for items of Moderate significance.	



Item # 8	Name Hand-jacked wool press
	Provenance Bond Store No. 2
Significance High	Comments None
Management Should be retained, reinstated and interpreted at Walsh Bay Pier 2/3 as per Management Recommendation 2 for items of High significance.	



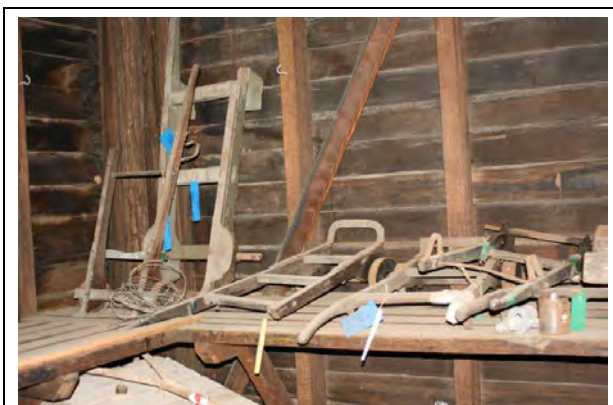
Item # 9	Name Heavy-Weight 4-Wheeled Trolley (4)
	Provenance Shoreshed, Pier 8/9
Significance Moderate	Comments Three with circular handle, one with T-bar handle.
Management Consider for interpretation and retain examples as part of a collection of Walsh Bay movable heritage, as per Management Recommendation 2 for items of Moderate significance.	



Item # 10	Name Boxes of building fittings
	Provenance Walsh Bay Wharves Precinct
Significance Low	Comments Switches, cords and other items.
Management Retain an example of this item as part of a collection of Walsh Bay movable heritage for future re-use, as per Management Recommendation 2 for items of Low significance.	



Item # 11	Name Piece of Wall
	Provenance Unknown
Significance Moderate	Comments 'Gent's Toilet' is painted on the render. It has been deliberately cut away and retained.
Management Consider for interpretation and retain examples as part of a collection of Walsh Bay movable heritage, as per Management Recommendation 2 for items of Moderate significance.	



Item # 12	Name Two-Wheeled Trolley (8)
	Provenance Walsh Bay Wharves Precinct
Significance Moderate	Comments One marked 'Bond Store 1'. Some labelled as 'Sack trolley'.
Management Consider for interpretation and retain examples as part of a collection of Walsh Bay movable heritage, as per Management Recommendation 2 for items of Moderate significance.	



Item # 13	Name Red Metal Lettering
	Provenance Unknown.
Significance Low	Comments Appears to be a random collection of letters.
Management Retain an example of this item as part of a collection of Walsh Bay movable heritage for future re-use, as per Management Recommendation 2 for items of Low significance.	



Item # 14	Name Keg Trolley
	Provenance Walsh Bay Wharves Precinct
Significance High	Comments One of a number of examples at Pier 2/3.
Management Should be retained, reinstated and interpreted at Walsh Bay Pier 2/3 as per Management Recommendation 2 for items of High significance.	



Item # 15	Name Manual Floor Sweeper
	Provenance Walsh Bay Wharves Precinct
Significance Low	Comments Circa 1960s.
Management Retain an example of this item as part of a collection of Walsh Bay movable heritage for future re-use, as per Management Recommendation 2 for items of Low significance.	



Item # 16	Name Goliath Hydraulic Wool Press
	Provenance Walsh Bay Wharves Precinct
Significance High	Comments Most likely dates from 1930s-1950s.
Management Should be retained, reinstated and interpreted at Walsh Bay Pier 2/3 as per Management Recommendation 2 for items of High significance.	



Item # 17	Name Bollard
	Provenance Walsh Bay Wharves Precinct
Significance Moderate	Comments Original fabric. Other examples remain in-situ in Walsh Bay Wharves Precinct.
Management Consider for interpretation and retain examples as part of a collection of Walsh Bay movable heritage, as per Management Recommendation 2 for items of Moderate significance.	



Item # 18	Name Timber Balustrade
	Provenance Walsh Bay Wharves Precinct
Significance Low	Comments None.
Management Retain an example of this item as part of a collection of Walsh Bay movable heritage for future re-use, as per Management Recommendation 2 for items of Low significance.	



Item # 19	Name Components of a Jib Crane
	Provenance Walsh Bay Wharves Precinct
Significance High	Comments Components located together on timber pallet.
Management Should be retained, reinstated and interpreted at Walsh Bay Pier 2/3 as per Management Recommendation 2 for items of High significance.	



Item # 20	Name Timber Pile Sections
	Provenance Walsh Bay Wharves Precinct
Significance Moderate	Comments Varying sizes.
Management Consider for interpretation and retain examples as part of a collection of Walsh Bay movable heritage, as per Management Recommendation 2 for items of Moderate significance.	



Item # 21	Name Cat Head Beam
	Provenance Towns Place
Significance High	Comments Sheave holes.
Management Should be retained, reinstated and interpreted at Walsh Bay Pier 2/3 as per Management Recommendation 2 for items of High significance.	



Item # 22	Name Five-Wheeled Trolley (2)
	Provenance Walsh Bay Wharves Precinct
Significance Moderate	Comments None
Management Consider for interpretation and retain examples as part of a collection of Walsh Bay movable heritage, as per Management Recommendation 2 for items of Moderate significance.	



Item # 23	Name Bag chute with opening east onto the apron.
	Provenance Pier 2/3
Significance Exceptional	Comments This item has been identified previously in CMP 2000.
Management Should be retained, reinstated and interpreted at Walsh Bay Pier 2/3 as per Management Recommendation 2 for items of Exceptional significance.	



Item # 24	Name Components of a Bale Chute
	Provenance Walsh Bay Wharves Precinct
Significance High	Comments Other pieces located beneath the stairs at the southern end of Pier 2/3. (Item # 74)
Management Should be retained, reinstated and interpreted at Walsh Bay Pier 2/3 as per Management Recommendation 2 for items of High significance.	



Item # 25	Name Window Frames
	Provenance Walsh Bay Wharves Precinct
Significance Low	Comments None.
Management Retain an example of this item as part of a collection of Walsh Bay movable heritage for future re-use, as per Management Recommendation 2 for items of Low significance.	



Item # 26	Name Metal Plates and Angle Sections
	Provenance Walsh Bay Wharves Precinct
Significance Low	Comments Doorway and post guards.
Management Retain an example of this item as part of a collection of Walsh Bay movable heritage for future re-use, as per Management Recommendation 2 for items of Low significance.	



Item # 27	Name Crane Accessories
	Provenance Walsh Bay Wharves Precinct
Significance High	Comments None.
Management Should be retained, reinstated and interpreted at Walsh Bay Pier 2/3 as per Management Recommendation 2 for items of High significance.	



Item # 28	Name Window Lock
	Provenance Shoreshed 8/9
Significance Low	Comments None.
Management Retain an example of this item as part of a collection of Walsh Bay movable heritage for future re-use, as per Management Recommendation 2 for items of Low significance.	



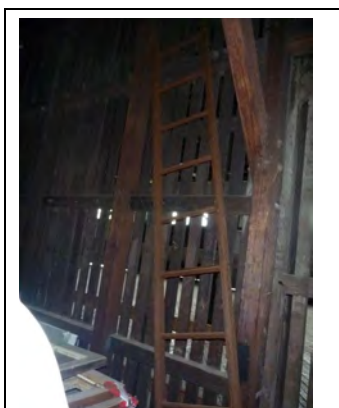
Item # 29	Name Weights (3)
	Provenance Walsh Bay Wharves Precinct
Significance Moderate	Comments None.
Management Consider for interpretation and retain examples as part of a collection of Walsh Bay movable heritage, as per Management Recommendation 2 for items of Moderate significance.	



Item # 30	Name Structural Angle (2)
	Provenance Walsh Bay Wharves Precinct
Significance Low	Comments None.
Management Retain an example of this item as part of a collection of Walsh Bay movable heritage for future re-use, as per Management Recommendation 2 for items of Low significance.	



Item # 31	Name Crane Components
	Provenance Walsh Bay Wharves Precinct
Significance Moderate	Comments None.
Management Consider for interpretation and retain examples as part of a collection of Walsh Bay movable heritage, as per Management Recommendation 2 for items of Moderate significance.	



Item # 32	Name Timber Ladder
	Provenance Walsh Bay Wharves Precinct
Significance Moderate	Comments None.
Management Consider for interpretation and retain examples as part of a collection of Walsh Bay movable heritage, as per Management Recommendation 2 for items of Moderate significance.	



Item # 33	Name Plywood Board
	Provenance Walsh Bay Wharves Precinct
Significance Low	Comments None.
Management Retain an example of this item as part of a collection of Walsh Bay movable heritage for future re-use, as per Management Recommendation 2 for items of Low significance.	



Item # 34	Name Green Pendant Lamps
	Provenance Walsh Bay Wharves Precinct
Significance Low	Comments Numerous examples.
Management Retain an example of this item as part of a collection of Walsh Bay movable heritage for future re-use, as per Management Recommendation 2 for items of Low significance.	



Item # 35	Name Pulley
	Provenance Walsh Bay Wharves Precinct
Significance Low	Comments None.
Management Retain an example of this item as part of a collection of Walsh Bay movable heritage for future re-use, as per Management Recommendation 2 for items of Low significance.	



Item # 36	Name Large Two-Wheeled Trolley
	Provenance Walsh Bay Wharves Precinct
Significance High	Comments None.
Management Should be retained, reinstated and interpreted at Walsh Bay Pier 2/3 as per Management Recommendation 2 for items of High significance.	

Location – Beneath the stairs at the southern end of the building



Item # 37	Name Green Pendant Lamps
	Provenance Walsh Bay Wharves Precinct
Significance Low	Comments Many examples remain installed in the Walsh Bay Wharves Precinct.
Management Retain an example of this item as part of a collection of Walsh Bay movable heritage for future re-use, as per Management Recommendation 2 for items of Low significance.	



Item # 38	Name Window Frames
	Provenance Walsh Bay Wharves Precinct
Significance Low	Comments Many examples.
Management Retain an example of this item as part of a collection of Walsh Bay movable heritage for future re-use, as per Management Recommendation 2 for items of Low significance.	



Item # 39	Name Two-Wheeled Trolleys (6)
	Provenance Walsh Bay Wharves Precinct
Significance Moderate	Comments Numerous examples.
Management Consider for interpretation and retain examples as part of a collection of Walsh Bay movable heritage, as per Management Recommendation 2 for items of Moderate significance.	



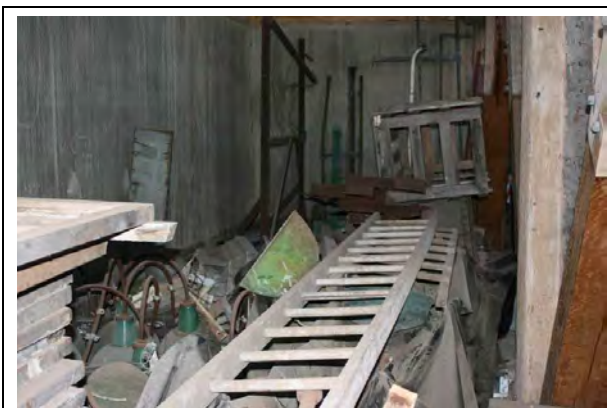
Item # 40	Name Power Boxes (2)
	Provenance Walsh Bay Wharves Precinct
Significance Moderate	Comments For power supply to wharf and ships.
Management Consider for interpretation and retain examples as part of a collection of Walsh Bay movable heritage, as per Management Recommendation 2 for items of Moderate significance.	



Item # 41	Name Miscellaneous Structural Sections
	Provenance Walsh Bay Wharves Precinct
Significance Low	Comments Metalwork.
Management Retain an example of this item as part of a collection of Walsh Bay movable heritage for future re-use, as per Management Recommendation 2 for items of Low significance.	



Item # 42	Name Rain Heads (2)
	Provenance Walsh Bay Wharves Precinct
Significance Moderate	Comments Fabricated from copper sheet.
Management Consider for interpretation and retain examples as part of a collection of Walsh Bay movable heritage, as per Management Recommendation 2 for items of Moderate significance.	



Item # 43	Name Ladders (2)
	Provenance Walsh Bay Wharves Precinct
Significance Moderate	Comments Provided access between floors in Walsh Bay Wharves.
Management Consider for interpretation and retain examples as part of a collection of Walsh Bay movable heritage, as per Management Recommendation 2 for items of Moderate significance.	



Item # 44	Name Doors (2)
	Provenance Walsh Bay Wharves Precinct
Significance Low	Comments Internal doors. Poor condition.
Management Retain an example of this item as part of a collection of Walsh Bay movable heritage for future re-use, as per Management Recommendation 2 for items of Low significance.	



Item # 45	Name Keg Trolley
	Provenance Walsh Bay Wharves Precinct
Significance High	Comments One of a number of examples at the site.
Management Should be retained, reinstated and interpreted at Walsh Bay Pier 2/3 as per Management Recommendation 2 for items of High significance.	



Item # 46	Name Six-Wheeled Trolley
	Provenance Walsh Bay Wharves Precinct
Significance Moderate	Comments None.
Management Consider for interpretation and retain examples as part of a collection of Walsh Bay movable heritage, as per Management Recommendation 2 for items of Moderate significance.	



Item # 47	Name Components of Overhead Cranes
	Provenance Pier 8/9
Significance High	Comments Includes a hand winch.
Management Should be retained, reinstated and interpreted at Walsh Bay Pier 2/3 as per Management Recommendation 2 for items of High significance.	



Item # 48	Name Toilet Cisterns (3)
	Provenance Walsh Bay Wharves Precinct
Significance Low	Comments None.
Management Retain an example of this item as part of a collection of Walsh Bay movable heritage for future re-use, as per Management Recommendation 2 for items of Low significance.	



Item # 49	Name Assorted Timber Pieces
	Provenance Unknown
Significance Low	Comments None.
Management Retain an example of this item as part of a collection of Walsh Bay movable heritage for future re-use, as per Management Recommendation 2 for items of Low significance.	



Item # 50	Name Timber Pile Sections
	Provenance Walsh Bay Wharves Precinct
Significance Moderate	Comments Metal reinforcement at the end of one pile.
Management Consider for interpretation and retain examples as part of a collection of Walsh Bay movable heritage, as per Management Recommendation 2 for items of Moderate significance.	



Item # 51	Name Box of Electrical Switches
	Provenance Walsh Bay Wharves Precinct
Significance Low	Comments Various types and sizes.
Management Retain an example of this item as part of a collection of Walsh Bay movable heritage for future re-use, as per Management Recommendation 2 for items of Low significance.	



Item # 52	Name Ship's Electrical Supply Adapter
	Provenance Walsh Bay Wharves Precinct
Significance High	Comments Wharf equipment.
Management Should be retained, reinstated and interpreted at Walsh Bay Pier 2/3 as per Management Recommendation 2 for items of High significance.	



Item # 53	Name Painted Two-Wheeled Trolley
	Provenance Walsh Bay Wharves Precinct
Significance Moderate	Comments None.
Management Consider for interpretation and retain as part of a collection of Walsh Bay movable heritage, as per Management Recommendation 2 for items of Moderate significance.	



Item # 54	Name Metal Railing
	Provenance Unknown
Significance Low	Comments None.
Management Retain an example of this item as part of a collection of Walsh Bay movable heritage for future re-use, as per Management Recommendation 2 for items of Low significance.	



Item # 55	Name Timber and Mesh Fence
	Provenance Walsh Bay Wharves Precinct
Significance Low	Comments Numerous examples.
Management Retain an example of this item as part of a collection of Walsh Bay movable heritage for future re-use, as per Management Recommendation 2 for items of Low significance.	



Item # 56	Name Sink
	Provenance Unknown
Significance Low	Comments Numerous examples.
Management Retain an example of this item as part of a collection of Walsh Bay movable heritage for future re-use, as per Management Recommendation 2 for items of Low significance.	



Item # 57	Name Carved Sandstone
	Provenance Unknown
Significance Low	Comments None.
Management Retain an example of this item as part of a collection of Walsh Bay movable heritage for future re-use, as per Management Recommendation 2 for items of Low significance.	



Item # 58	Name Sign 'Boiler No. 21'
	Provenance Unknown
Significance Low	Comments Perforated metal.
Management Retain an example of this item as part of a collection of Walsh Bay movable heritage for future re-use, as per Management Recommendation 2 for items of Low significance.	



Item # 59	Name Timber Crate
	Provenance Unknown
Significance Low	Comments Timber slats.
Management Retain an example of this item as part of a collection of Walsh Bay movable heritage for future re-use, as per Management Recommendation 2 for items of Low significance.	



Item # 60	Name Fluorescent Light Fittings
	Provenance Unknown
Significance Low	Comments Various types.
Management Retain an example of this item as part of a collection of Walsh Bay movable heritage for future re-use, as per Management Recommendation 2 for items of Low significance.	



Item # 61	Name Light Fitting
	Provenance Unknown
Significance Low	Comments Metal.
Management Retain an example of this item as part of a collection of Walsh Bay movable heritage for future re-use, as per Management Recommendation 2 for items of Low significance.	



Item # 62	Name Door Handle (3)
	Provenance Unknown
Significance Low	Comments None.
Management Retain an example of this item as part of a collection of Walsh Bay movable heritage for future re-use, as per Management Recommendation 2 for items of Low significance.	



Item # 63	Name Boxes of Glass Bottles
	Provenance Unknown
Significance Low	Comments Various types.
Management Retain an example of this item as part of a collection of Walsh Bay movable heritage for future re-use, as per Management Recommendation 2 for items of Low significance.	



Item # 64	Name Cupboard
	Provenance Unknown
Significance Low	Comments Probably installed in wall.
Management Retain an example of this item as part of a collection of Walsh Bay movable heritage for future re-use, as per Management Recommendation 2 for items of Low significance.	

Beneath the northern side of the stairs



Item # 65	Name Green Pendant Lamps
	Provenance Walsh Bay Wharves Precinct
Significance Low	Comments Numerous examples.
Management Retain an example of this item as part of a collection of Walsh Bay movable heritage for future re-use, as per Management Recommendation 2 for items of Low significance.	



Item # 66	Name Grey Pendant Lamps
	Provenance Walsh Bay Wharves Precinct
Significance Low	Comments Second-generation light fittings.
Management Retain an example of this item as part of a collection of Walsh Bay movable heritage for future re-use, as per Management Recommendation 2 for items of Low significance.	



Item # 67	Name Two large pieces of stone
	Provenance Unknown
Significance Low	Comments Not measured. Most likely from Walsh Bay.
Management Retain an example of this item as part of a collection of Walsh Bay movable heritage for future re-use, as per Management Recommendation 2 for items of Low significance.	



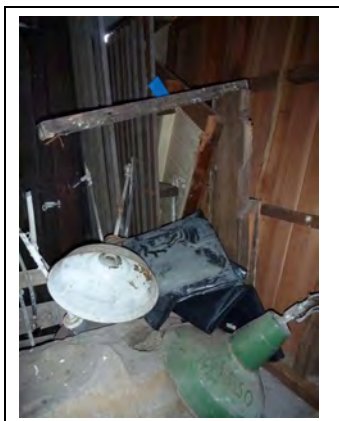
Item # 68	Name Sections of a dead house wall
	Provenance Walsh Bay Wharves Precinct
Significance Low	Comments Dead houses were installed in most Walsh Bay wharves.
Management Retain an example of this item as part of a collection of Walsh Bay movable heritage for future re-use, as per Management Recommendation 2 for items of Low significance.	



Item # 69	Name Miscellaneous architectural timber
	Provenance Walsh Bay Wharves Precinct
Significance Low	Comments Various cuts and sizes.
Management Retain an example of this item as part of a collection of Walsh Bay movable heritage for future re-use, as per Management Recommendation 2 for items of Low significance.	



Item # 70	Name Timber bench
	Provenance Pier 2/3
Significance Low	Comments Timber slats and steel frame.
Management Retain an example of this item as part of a collection of Walsh Bay movable heritage for future re-use, as per Management Recommendation 2 for items of Low significance.	



Item # 71	Name Part of a Hydrant Box
	Provenance Unknown
Significance Low	Comments In two pieces.
Management Retain an example of this item as part of a collection of Walsh Bay movable heritage for future re-use, as per Management Recommendation 2 for items of Low significance.	



Item # 72	Name Metal Basket Trolley
	Provenance Walsh Bay Wharves Precinct
Significance Low	Comments Aesthetic interest in trolley.
Management Retain an example of this item as part of a collection of Walsh Bay movable heritage for future re-use, as per Management Recommendation 2 for items of Low significance.	



Item #	Name Broken Carved Pieces of Sandstone
73	Provenance Walsh Bay Wharves Precinct

Significance	Comments
Low	Four pieces.

Management Retain an example of this item as part of a collection of Walsh Bay movable heritage for future re-use, as per Management Recommendation 2 for items of Low significance.



Item #	Name Part of an Exterior Bale Chute (timber)
74	Provenance Walsh Bay Wharves Precinct

Significance	Comments
High	Other components in dead house (Item #24).

Management Should be retained, reinstated and interpreted at Walsh Bay Pier 2/3 as per Management Recommendation 2 for items of High significance.



Item #	Name Heavy Duty Stairs (2)
75	Provenance Walsh Bay Wharves Precinct

Significance	Comments
Moderate	Internal fittings.

Management Consider for interpretation and retain examples as part of a collection of Walsh Bay movable heritage, as per Management Recommendation 2 for items of Moderate significance.



Item #	Name Wrought Iron Truss Rods (7)
76	Provenance Walsh Bay Wharves Precinct

Significance	Comments
High	Numerous examples remain in-situ in Pier 2/3 and elsewhere in Precinct.

Management Should be retained, reinstated and interpreted at Walsh Bay Pier 2/3 as per Management Recommendation 2 for items of High significance.



Item # 77	Name Low Six-Wheeled Trolley
	Provenance Walsh Bay Wharves Precinct
Significance Moderate	Comments None.
Management Consider for interpretation and retain as part of a collection of Walsh Bay movable heritage, as per Management Recommendation 2 for items of Moderate significance.	



Item # 78	Name Miscellaneous Pulleys
	Provenance Walsh Bay Wharves Precinct
Significance Moderate	Comments May be associated with bale chutes.
Management Consider for interpretation and retain examples as part of a collection of Walsh Bay movable heritage, as per Management Recommendation 2 for items of Moderate significance.	



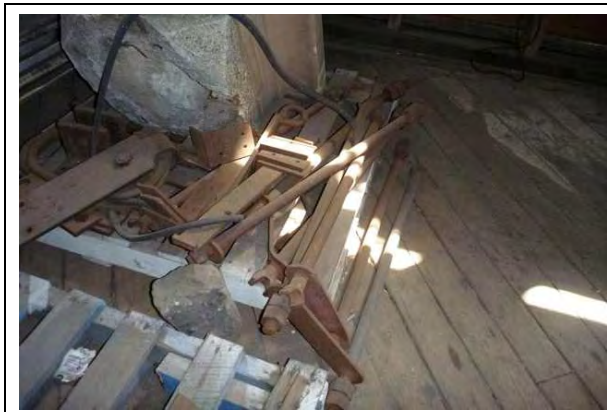
Item # 79	Name Timber Wall Section
	Provenance Walsh Bay Wharves Precinct
Significance Low	Comments Painted white.
Management Retain an example of this item as part of a collection of Walsh Bay movable heritage for future re-use, as per Management Recommendation 2 for items of Low significance.	



Item # 80	Name Sandstone Pieces
	Provenance Unknown
Significance Low	Comments Wrapped up on a timber pallet.
Management Retain an example of this item as part of a collection of Walsh Bay movable heritage for future re-use, as per Management Recommendation 2 for items of Low significance.	



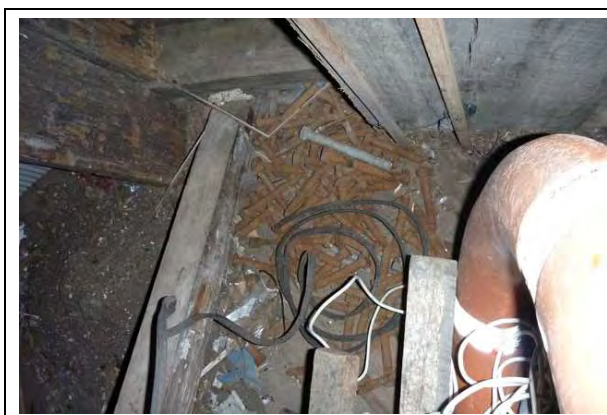
Item # 81	Name Trough/Basin
	Provenance Unknown
Significance Low	Comments Steel.
Management Retain an example of this item as part of a collection of Walsh Bay movable heritage for future re-use, as per Management Recommendation 2 for items of Low significance.	



Item # 82	Name Wrought Iron Truss Components
	Provenance Walsh Bay Wharves Precinct
Significance Moderate	Comments Vertical members of iron trusses. (Item #76)
Management Consider for interpretation and retain examples as part of a collection of Walsh Bay movable heritage, as per Management Recommendation 2 for items of Moderate significance.	



Item # 83	Name Life Preserver
	Provenance Walsh Bay Wharves Precinct
Significance Low	Comments Typical example.
Management Retain an example of this item as part of a collection of Walsh Bay movable heritage for future re-use, as per Management Recommendation 2 for items of Low significance.	



Item # 84	Name Bolts and Screws
	Provenance Walsh Bay Wharves Precinct
Significance Low	Comments Various sizes and types.
Management Retain an example of this item as part of a collection of Walsh Bay movable heritage for future re-use, as per Management Recommendation 2 for items of Low significance.	



Item # 85	Name Crane Accessories
	Provenance Walsh Bay Wharves Precinct
Significance Moderate	Comments In plastic crate.
Management Consider for interpretation and retain examples as part of a collection of Walsh Bay movable heritage, as per Management Recommendation 2 for items of Moderate significance.	

Lower Floor Northern End



Item # 86	Name Timber Pile (Joined)
	Provenance Walsh Bay Wharves Precinct
Significance Moderate	Comments Demonstrates method of repairing piles.
Management Consider for interpretation and retain as part of a collection of Walsh Bay movable heritage, as per Management Recommendation 2 for items of Moderate significance.	



Item # 87	Name Timber Pile (Copper Clad)
	Provenance Walsh Bay Wharves Precinct
Significance Moderate	Comments Demonstrates method of protecting piles.
Management Consider for interpretation and retain as part of a collection of Walsh Bay movable heritage, as per Management Recommendation 2 for items of Moderate significance.	



Item # 88	Name Timber Crane Post
	Provenance Walsh Bay Wharves Precinct
Significance Moderate	Comments From wharf exterior
Management Consider for interpretation and retain as part of a collection of Walsh Bay movable heritage, as per Management Recommendation 2 for items of Moderate significance.	



Item # 89	Name Heavy Timber Beam
	Provenance Walsh Bay Wharves Precinct
Significance Low	Comments Original purpose unclear.
Management Retain an example of this item as part of a collection of Walsh Bay movable heritage for future re-use, as per Management Recommendation 2 for items of Low significance.	



Item # 90	Name Part of Timber Beam/Column
	Provenance Walsh Bay Wharves Precinct
Significance Low	Comments Poor condition.
Management Retain an example of this item as part of a collection of Walsh Bay movable heritage for future re-use, as per Management Recommendation 2 for items of Low significance.	

Upper floor Southern End



Item # 91	Name Assorted timber pieces
	Provenance Unknown
Significance Low	Comments 1-2 metres in length
Management Retain an example of this item as part of a collection of Walsh Bay movable heritage for future re-use, as per Management Recommendation 2 for items of Low significance.	



Item # 92	Name Assorted timber pieces
	Provenance Unknown
Significance Low	Comments 2-5 metres in length.
Management Retain an example of this item as part of a collection of Walsh Bay movable heritage for future re-use, as per Management Recommendation 2 for items of Low significance.	



Item # 93	Name Assorted timber pieces
	Provenance Unknown
Significance Low	Comments 2-5 meters in length
Management Retain an example of this item as part of a collection of Walsh Bay movable heritage for future re-use, as per Management Recommendation 2 for items of Low significance.	



Item # 94	Name Bundle of Floorboards
	Provenance Unknown
Significance Low	Comments None.
Management Retain an example of this item as part of a collection of Walsh Bay movable heritage for future re-use, as per Management Recommendation 2 for items of Low significance.	



Item # 95	Name Assorted Structural Timber Sections
	Provenance Unknown
Significance Low	Comments Various cuts and sizes. Some bracing.
Management Retain an example of this item as part of a collection of Walsh Bay movable heritage for future re-use, as per Management Recommendation 2 for items of Low significance.	



Item # 96	Name Timber Stair and Landing Assembly
	Provenance Walsh Bay Wharves Precinct
Significance High	Comments None.
Management Should be retained, reinstated and interpreted at Walsh Bay Pier 2/3 as per Management Recommendation 2 for items of High significance.	



Item # 97	Name Overhead Sheaths for a Goods Hoist
	Provenance Walsh Bay Wharves Precinct
Significance Exceptional	Comments Associated with items 98 and 121.
Management Should be retained, reinstated and interpreted at Walsh Bay Pier 2/3 as per Management Recommendation 2 for items of Exceptional significance.	



Item # 98	Name Corrugated Cast Iron Sheets
	Provenance Walsh Bay Wharves Precinct
Significance Exceptional	Comments From goods hoist housing. Associated with items 97 and 121.
Management Should be retained, reinstated and interpreted at Walsh Bay Pier 2/3 as per Management Recommendation 2 for items of Exceptional significance.	



Item # 99	Name Electrical Switch
	Provenance Unknown
Significance Low	Comments Attached to piece of timber panel.
Management Retain an example of this item as part of a collection of Walsh Bay movable heritage for future re-use, as per Management Recommendation 2 for items of Low significance.	



Item # 100	Name Timber Pile Section with Metal Tip
	Provenance Walsh Bay Wharves Precinct
Significance Moderate	Comments None.
Management Consider for interpretation and retain as part of a collection of Walsh Bay movable heritage, as per Management Recommendation 2 for items of Moderate significance.	



Item # 101	Name Signs marked 'A', 'B', 'C', and 'D'
	Provenance Unknown
Significance Low	Comments Attached to roof trusses.
Management Retain an example of this item as part of a collection of Walsh Bay movable heritage for future re-use, as per Management Recommendation 2 for items of Low significance.	

Upper floor Northern End



Item # 102	Name Electric Overhead Travelling Crane
	Provenance Pier 8/9
Significance Exceptional	Comments Identified in the Walsh Bay Industrial Heritage Review, 1997.
Management Should be retained, reinstated and interpreted at Walsh Bay Pier 2/3 as per Management Recommendation 2 for items of Exceptional significance.	

Further Information

Originally installed in the shored shed for Wharf 8/9, which was completed in 1912. This wharf was exclusively used throughout its operating life for the exporting of wool. It was identified as being significant at a regional level as an intact example for an electric overhead travelling crane which demonstrates the size and level of activity of the shipping trade carried out at these wharves.



Item # 103	Name Stacks of Structural Timbers
	Provenance Walsh Bay Wharves Precinct
Significance Low	Comments Various cuts and sizes.
Management Retain an example of this item as part of a collection of Walsh Bay movable heritage for future re-use, as per Management Recommendation 2 for items of Low significance.	

Located north of Post 27



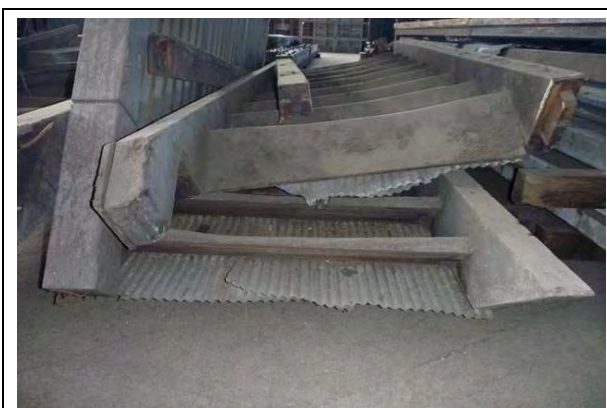
Item # 104	Name Top-Hung Timber Cargo Doors
	Provenance Walsh Bay Wharves Precinct
Significance Low	Comments 14 examples in 4 piles. Part of the original fit-out.
Management Retain an example of this item as part of a collection of Walsh Bay movable heritage for future re-use, as per Management Recommendation 2 for items of Low significance.	



Item # 105	Name Trap Doors (5)
	Provenance Walsh Bay Wharves Precinct
Significance Low	Comments None.
Management Retain an example of this item as part of a collection of Walsh Bay movable heritage for future re-use, as per Management Recommendation 2 for items of Low significance.	



Item # 106	Name Stairs with Balustrade (2)
	Provenance Walsh Bay Wharves Precinct
Significance Low	Comments
Management Retain an example of this item as part of a collection of Walsh Bay movable heritage for future re-use, as per Management Recommendation 2 for items of Low significance.	



Item # 107	Name Stack of ripple iron
	Provenance Unknown
Significance Low	Comments Spare building material.
Management Retain an example of this item as part of a collection of Walsh Bay movable heritage for future re-use, as per Management Recommendation 2 for items of Low significance.	



Item # 108	Name Steel Vertical Ladder
	Provenance Walsh Bay Wharves Precinct
Significance Low	Comments Fire egress.
Management Retain an example of this item as part of a collection of Walsh Bay movable heritage for future re-use, as per Management Recommendation 2 for items of Low significance.	



Item # 109	Name Small Cargo Doors (2)
	Provenance Walsh Bay Wharves Precinct
Significance Low	Comments None.
Management Retain an example of this item as part of a collection of Walsh Bay movable heritage for future re-use, as per Management Recommendation 2 for items of Low significance.	



Item # 110	Name Window Frame
	Provenance Walsh Bay Wharves Precinct
Significance Low	Comments Numerous examples remain in-situ in wharves.
Management Retain an example of this item as part of a collection of Walsh Bay movable heritage for future re-use, as per Management Recommendation 2 for items of Low significance.	



Item # 111	Name Louvres
	Provenance Walsh Bay Wharves Precinct
Significance Low	Comments Numerous examples remain in-situ in wharves.
Management Retain an example of this item as part of a collection of Walsh Bay movable heritage for future re-use, as per Management Recommendation 2 for items of Low significance.	



Item # 112	Name Iron Reinforcement Straps
	Provenance Walsh Bay Wharves Precinct
Significance Moderate	Comments Use at Walsh Bay unclear.
Management Consider for interpretation and retain examples as part of a collection of Walsh Bay movable heritage, as per Management Recommendation 2 for items of Moderate significance.	



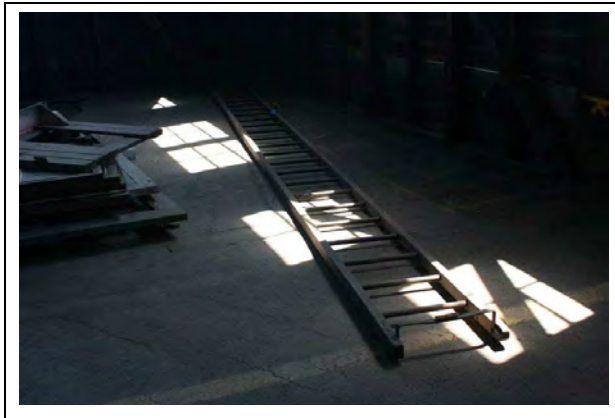
Item # 113	Name Assorted Timber and Boards
	Provenance Walsh Bay Wharves Precinct
Significance Low	Comments
Management Retain an example of this item as part of a collection of Walsh Bay movable heritage for future re-use, as per Management Recommendation 2 for items of Low significance.	



Item # 114	Name Structural Steel Sections
	Provenance Walsh Bay Wharves Precinct
Significance Low	Comments At least four rolled steel joists.
Management Retain an example of this item as part of a collection of Walsh Bay movable heritage for future re-use, as per Management Recommendation 2 for items of Low significance.	



Item # 115	Name Pile of Doors and Window Frames
	Provenance Walsh Bay Wharves Precinct
Significance Low	Comments None.
Management Retain an example of this item as part of a collection of Walsh Bay movable heritage for future re-use, as per Management Recommendation 2 for items of Low significance.	



Item # 116	Name Timber Ladder
	Provenance Walsh Bay Wharves Precinct
Significance Moderate	Comments None.
Management Consider for interpretation and retain examples as part of a collection of Walsh Bay movable heritage, as per Management Recommendation 2 for items of Moderate significance.	



Item # 117	Name Timber Bolted to Steel Sections
	Provenance Walsh Bay Wharves Precinct
Significance Moderate	Comments Structural sections.
Management Consider for interpretation and retain examples as part of a collection of Walsh Bay movable heritage, as per Management Recommendation 2 for items of Moderate significance.	



Item # 118	Name Metal Signs (2)
	Provenance Walsh Bay Wharves Precinct
Significance Low	Comments One from roof. Other unreadable.
Management Retain an example of this item as part of a collection of Walsh Bay movable heritage for future re-use, as per Management Recommendation 2 for items of Low significance.	



Item # 119	Name Timber Columns
	Provenance Pier 8/9
Significance Moderate	Comments Tagged Pier 8/9
Management Consider for interpretation and retain examples as part of a collection of Walsh Bay movable heritage, as per Management Recommendation 2 for items of Moderate significance.	



Item # 120	Name Gym Signs and Posters
	Provenance Towns Place
Significance Low	Comments Various signs and posters from gym formerly at Towns Place.
Management Retain an example of this item as part of a collection of Walsh Bay movable heritage for future re-use, as per Management Recommendation 2 for items of Low significance.	

Outside



Item # 121	Name Hydraulic Ram
	Provenance Pier 6/7
Significance Exceptional	Comments Item is identified in the Walsh Bay Industrial Heritage Review, 1997: Inventory No. 24.
Management Should be retained, reinstated and interpreted at Walsh Bay Pier 2/3 as per Management Recommendation 2 for items of Exceptional significance.	

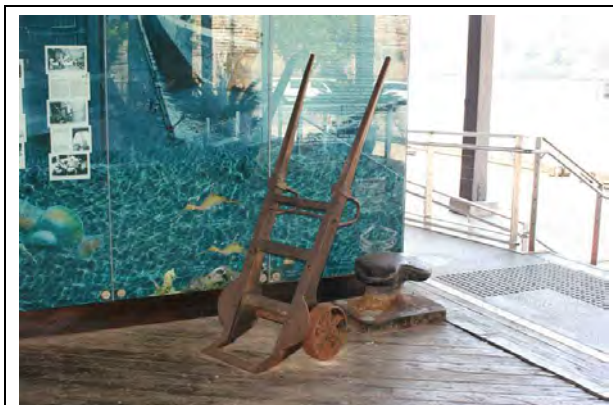
Further Information

Installed as part of the original fit out of Pier 6/7 and used to raise goods from the wharf to the upper level of the shoreded. Pier 6/7 was completed in 1918. The wharf was leased to Burn Philp & Company and used for the export of general cargo. Pier 6/7 was the only wharf in Walsh Bay that had a single-storey wharf shed and thus was the only one in which the bridge over Hickson Road to the upper level of the shoreded does not give any access into the upper level of the wharf.

The statement of significance for this item identifies it as being of State significance. Hydraulic power was the first important alternative to steam as a power source for heavy work. It was reticulated around Sydney from the early 1880s, powering lifts and presses as well as the machines associated with the wool processing industry and the cranes and elevators installed on the wharves of the port upon which NSW relied for its wealth. This technology provided the impetus for multi-storey buildings and the expansion of manufacturing industries in Sydney. The hydraulic ram from Pier 6/7 is a representative example of the operating pistons of the hydraulic system and is among few examples which remain in an operable context. It has associations with the operations carried out at Pier 6/7.



Item # 122	Name Keg Trolley
	Provenance Walsh Bay Wharves Precinct
Significance High	Comments This item is currently being interpreted at Pier 2/3.
Management Should be retained, reinstated and interpreted at Walsh Bay Pier 2/3 as per Management Recommendation 2 for items of High significance.	



Item # 123	Name Two-wheeled Trolley
	Provenance Walsh Bay Wharves Precinct
Significance High	Comments This item is currently being interpreted at Pier 2/3.
Management Should be retained, reinstated and interpreted at Walsh Bay Pier 2/3 as per Management Recommendation 2 for items of High significance.	



Item #	Name Bollard
124	Provenance Walsh Bay Wharves Precinct
Significance	Comments
Moderate	This item is currently being interpreted at Pier 2/3.
Management Consider for interpretation and retain as part of a collection of Walsh Bay movable heritage, as per Management Recommendation 2 for items of Moderate significance.	