

8.0 APPENDICES

8.1 Stratigraphic Contexts

8.1.1 Area A Running Stratigraphy (unit numbers allocated: 001 – 200)

Unit #	Description	Old Area #
001	Fill Between sandstone wall and capping beam, backfill	42 N
002	Mid – dark brown, friable, loose soil	42 N
003	Yellow sandy layer, culturally sterile, but sandstone blocks and lumps	42 N
004	Dark brown rich organic layer, culturally sterile, mangrove??	42 N
005	Dark – mid brown rich organic surface layer with artefacts under 001	42 N
006	Loose soft, dark (chocolate) brown varying to light orange, pit of metal glass and slate (looks like bottle dump)	41 S
007	Fill layer under 006 (diffuse) dump of metal waste	41 S
008	Mixed layers of modern fill (north of clay pipe) dark charcoal, orange yellow mottled layer Under 001	40 S CBEM
009	Mixed layer, various colours (south of clay pipe) recent backfill, under 001	40 S
010	Dark brown fill unit cut by test trench, some artefacts Under units 008 and 011	40 S
011	Charcoal / coal layer, cut by clay pipes and brick housing, some glass Under 008	40, 38 S
012	Glass layer – bottle dump, with limited ceramics. Under 010	40 S
013	Coal surface. Under 012	40 S CBEM
014	Orangey metallic layer, sandy clay with metal objects	40 S CBEM
015	Orangey yellow sandstone fill layer, with sandstone and brick fragments, under 014. Possibly correlated to 214, 401	40 S + N CBEM
016	Green sandy clay layer with some red sandstone pieces and pebbles	40 S
017	Mixed layer of various organic soils, Mangrove?? Dark brown, no artefacts, under 016	40 S
018	Mid – orange brown organic layer along sea wall, sandy with some clay, Under 017 and 015	40 S
019	Dark layer (smelly = contaminated) with the huge artefact layer, under 016 and 017	40 S
020	Coal layer, artefacts pressed on top, potential surface?? Under 018	40 S
021	Sandstone concentration localised deposit no artefacts	38 S
022	Basalt rubble deposit, localised fill event to level site. Under 021	38 S
023	DUPLICATE ENTRY SAME AS 011	

Unit #	Description	Old Area #
024	Cut and fill for pipe, cuts through 011, under 001	38 S
025	Sandstone surface as noted S of capping beam. Dissected by 024, under 022	39 & 38 S
026	Not a unit as recorded	
027	Compact dirt layer 'surface' E of 025	39 & 38 S
028	Mottled fill unit, lensing, associated with reclamation of water area. Minimal artefacts	39 & 38 S
029	Grey silty deposit under 019. waterlogged and anaerobic, lots of artefacts, contaminated	39 & 38 S, TT4, TT5, TT6 TT7
030	Road base / blue metal, under 001	40 – 39 N
031	Brown / black fill layer (similar to 008) below 030, sandstone lumps, charcoal, no artefacts	40 – 39 N
032	Dark – brown very rich organic layer, silty sand with timber fragments, disintegrated wooden drain	42 – 38 N
033	Sandstone layer, land reclamation, similar to 003	41 – 39 N
034	FEATURE Sandstone wall with mortar, 2 courses, not straight, later used as path / roadway. Correlated to 077	41 – 39 N
035	Number missed	
036	Compacted layer on top of sandstone wall 034. very compact, levelling layer / floor sand??	41 – 39 N
037	FEATURE Basalt pavers abutting 038, footpath or roadway	40 – 39 N
038	FEATURE Rounded sandstone blocks, curb of footpath or roadway	40 – 38 N
039	FEATURE Sandstone cobbles extending from 032 -to concrete tank to seawall	39 N
040	White sand below cobbles 039, possibly base fill associated with 039	39 N
041	FEATURE sandstone block with metal pipe in it. Modern-ish	39 N
042	FEATURE 2 nd sandstone block to E of 041, no pipe	39 N
043	FEATURE 3 rd sandstone block to E of 042, no pipe	39 N
044	FEATURE 4 th sandstone block to E of 043, no pipe. 041 – 044 aligned on an E – W orientation.	39 N
045	Mixed rubble / granite layer - fill	39 end & 38 N
046	Silty brown layer, some glass and ceramic, looks organic but no evidence of wood	39 end & 38 N
047	Sandstone rubble, yellow fill with red bricks, no other artefacts	39 end & 38 N
048	Yellow sand, some artefacts including glass and ceramics, fr of red bricks and sandstone chunks. Over whole area N of seawall. From Lucy's notes not on formal sheet.	39 end & 38 N
049	Red / black layer, some green (mottled) still looks like fill (just not the usual quarry fill), some sandstone fr.	39 end & 38 N

Unit #	Description	Old Area #
050	Charcoal layer, black sand and coal layer 'surface'. Under 049	39 end & 38 N
051	Chocolate brown fill layer under 050	39 end & 38 N
052	FEATURE Seawall support wall at repair point where seawall displays different construction method. Western one	39 N
053	Packing around 052, sandy backfill in cut for 052	39 N
054	Dark yellow / grey sand with frr of charcoal, under 051	39 end & 38 N
055	Dark brown sandy fill, no artefact, lenses of contamination	39 end & 38 N
056	Yellow sandstone lumps layer, rubble fill	39 end & 38 N
057	FEATURE seawall support / bracing. Middle one. sandstone	37 N
058	FEATURE seawall support / bracing. Eastern one	37 N
059	Sandstone fill , mottled	37 – 39 N
060	FEATURE sandstone surface keyed into seawall, w of 058. Below 059	37 N
061	Sandstone fill below 060, correlated to 071 on the S (?).	37 N tt9, tt10
062	FEATURE Granite cobbles at 90° to 058	37 N
063	FEATURE Sandstone floor surrounding easternmost 064	37 N
064	FEATURE line of sandstone blocks. Square (sandstone cube) with a square cut in the top, pillar / wooden post supports. Correlated to 231, 402, 403. Six exposed, the two westernmost resting on a support pier, possibly to raise them to an appropriate height.	37 N
065	Black charcoal layer, lensing in area 39 and 38. Under 045, 046 and 047. No artefacts. Higher up than the number would suggest	Nearly all area N
066	Thin layer of black soil, possible contamination staining?? Poss surface but unclear. Under 055 and 056	Nearly all area N. tt8, tt11
067	Grey sand lensing black organic material. Under 061. Goes down onto bedrock in N areas, correlated to 072 (?) on the S side, sitting on deeper marine sediments.	Nearly all area N. tt8 tt11
068 Area B	FEATURE Large pit cut into bedrock. Approx 1000 mm deep, modern excavation	43
069 Area B	Clean sandfill in 068. No artefacts	43
070	Dark grey silt/sand with more organic material, under 029 in S areas	Tt4, tt5, tt6, tt7 all S
071	Sandstone fill unit, under 070 on the S side, correlates to 061 on the N	Tt4, tt5, tt6, tt7 all S
072	Clear sand with few artefacts, mainly wood (organic), correlates to 067 on the N (?)	Tt4, tt5, tt7 all S

Unit #	Description	Old Area #
073	Marine sediment, grey sand with high shell content. Below 072	Tt5, tt6, tt7 all S
074	Marine sand, uniform grey colour with no artefacts and minimal shell content	Tt7 All S
075	Black fill unit between 071 and 072 in tt7, appears to be only localised deposit, as not in any of the other deeper test trenches.	Tt7
076	FEATURE slate flagstones S of bond store walls 078, 091 and 092	42 N
077	FEATURE irregular stone footing orientated E-W. 2 courses remain	42 N
078	FEATURE Phase I bond store wall. Westernmost section of the southern wall of the bond store. Common with Area B	42 N
079	Demolition rubble fill, localised	42 N
080	FEATURE Stoneware pipe in concrete casing extending into area B. Orientated N-S with a 45 degree return to the SE	42 N + S
081	Sandstone fill unit. Small to fist size pieces in a pink matrix, between 002 and 003 in a localised deposit	42 N
082	Tar and bitumen unit, localised to rock shelf, Timmy thinks might be surface, seems quite old (pre 078)	42 N
083	Grey fill unit with sandstone pieces, fist and smaller	42 N
084	FEATURE Seawall, Phase 1 western portion. Landward face is random rubble, seaward face is slightly cambered.	42, 41, 40, part 39
085	FEATURE rough sandstone support wall for 084, westernmost support wall. Orientated N-S	42 N
086	FEATURE semi dressed sandstone support wall for 084. Orientated N-S, between support walls 085 and 052	41 N
087	FEATURE Steel hydraulic hoist pipe, single lifter for cars. C. 1943 when the site was the MSB workshop. Correlated to 210	42 N
088	FEATURE Brick lined rectangular pit/tank N of seawall 084. 1300 mm deep with concrete face on interior. Correlated to 089?	42 N
089	FEATURE Concrete rectangular pit/tank N of seawall 084, dissecting 052. Correlated to 088?	
090	FEATURE Seawall Phase 2. Eastern portion of seawall, upper courses of wall, double skin with rubble infill. Present from the repair point and wall 052. Sitting on 095	
091	FEATURE Bond store wall Phase 2. Southern wall of first bond store, east of wall 078. Common with Area B.	41 N
092	FEATURE Bond store wall, Phase 3. Southern wall of first bond store, east of wall 091. Common with Area B	
093	FEATURE Gutter made of single course of flat topped stones on sandstone rubble fill 033. Correlated with 094 and 039	
094	FEATURE Single course of bevel edged, edging stones, possibly a kerb. Correlated with 093 and 039	

Unit #	Description	Old Area #
095	FEATURE Seawall Phase 2. Lower course of seawall under 090. Different construction method, with rougher dressed stones on a batter.	
096	DUPLICATE ENTRY SAME AS 090	
097	FEATURE Foundation stones as shown on plan. They are sitting above 037 and 038 and are correlated to 041, 042, 043 and 044.	

8.1.2 Area B Running Stratigraphy (unit numbers allocated: 201 - 400)

Unit #	Description	Old Area #
201	Sandy sandstone fill along W face of 203	36
202	Localised patch of coal along W face of 203	36
203	FEATURE: E wall of area 36 in Tim's notes, sandstone wall	36
204	FEATURE: N wall of area 36 in Tim's notes, sandstone wall / footing common with Area C	36
205	N – S orientated drain (Drain A in Tim's area 36 notes)	36
206	Brick and concrete drain junction box (Box A in Tim's notes)	36
207	E – W orientated drain (Drain B in Tim's notes)	36
208	Brick and concrete drain junction box (Box B in Tim's notes)	36
209	Drain, NE – SW axis (Drain C in Tim's notes)	36
210	FEATURE Concrete footing and steel collars	36
211	FEATUER: Cut in bedrock for 210	36
212	Timber and bitumen floor remains N of 208 (not S of 208)	36
213	FEATURE: Cut for drain running NE – SW (Drain D in Tim's notes)	36
214	Bulk fill event, dense thick sandstone fill, c. 1950s??? Correlated to 015 (?) 401	34 33 32
215	FEATURE Upper concrete level, sandstone and red brick concrete floor	33 32 31
216	FEATURE: Sandstone pillars with modern cement and red pressed bricks. C. 1950??? Correlated to 408, only above 215, below 215 are rubble fill (see notes).	34 33 32
217	Brown soil, patchy lenses.	34 33
218	Clay layer with small sandstone fr.	34 33
219	Black surface at interface of units 218 / 221.	34 33
220	FEATURE: Timber foundation posts with post holes cut on upper face.	33
221	Lower bulk fill event.	33 32
222	FEATURE????: Rubble along wall (ext of 204) , poss foundation deposit of structural importance.	33

Unit #	Description	Old Area #
223	FEATURE: Foundation wall E – W orientation on N side of area 33.	33
224	FEATURE: Earlier cement rendered surface.	34
225	Demolition fill, sub unit of 221.	33 32
226	FEATURE: Gutter and sump cut associated with 224.	34
227	Sump fill deposit, upper deposit, associated with 226.	34
228	Sump fill deposit, silty dark grey brown sand, associated with 226.	34
229	Sump fill deposit, black oily deposit associated with 226.	34
230	Sump fill deposit, grey black gritty deposit associated with 226.	34
231	FEATURE: Square (almost cubic) blocks with square hole on top, pos. post support. Correlated to 064, 402, 403.	33 32 31
232	FEATURE cement formwork wall at the E end of area 32. Extends across Area C: second bond store.	32
233	FEATURE series of stoneware drains, for toilets.	32
234	FEATURE unmortared sandstone wall, three courses remaining, dividing area 32 into N and S rooms.	32
235	Dark brown gritty loam, sterile, interface of units.	32
236	Unconsolidated clay levelling fill, some s'stone frr, no artefacts.	32
237	FEATURE sandstone wall running East West, later in construction than the western wall (238) common with area 34. Abuts feature 238.	32
238	FEATURE sandstone wall on the W side common with area 34.	34 32
239	Contaminated black deposit on concrete floor 215.	32
240	Bulk fill event under 215, may be correlated to 221.	32
241	Pale horizon of fine sand under 240.	32
242	Fill unit, probably a demolition packing fill as most constituents are construction materials and different to other demo fill in Area 34 and 32. Correlates to 415.	31
243	FEATURE Brick bay, modern machine made bricks laid in modern cement, 3 bricks wide in English bond. N wall built on top of common bond store wall. Correlates to 416 / 417.	31
244	Mottled brown fill unit. Culturally sterile, mottled with sandstone frr, but not much else, approx 500 mm deep.	31
245	FEATURE Slate under 231. Only slate in this way in old area 31. Probably put in as damp coursing.	31
246	FEATURE Timber floorboards / joists. Very thick to be floorboards, but not much structural integrity if joists. Not under the westernmost 231 of area 31.	31
247	FEATURE western counting house wall. N/S orientated double faced wall with random rubble infill. Stepped lower course on the E (internal) face. Wall has been truncated to put	31

Unit #	Description	Old Area #
	in the Bond store walls so predates those walls.	
248	FEATURE Eastern counting house wall, N/S orientated, same as 247, but lower course stepped out on the W (but still the internal) face. Wall has been truncated to put in the Bond store walls so predates those walls.	31
249	Sterile sandy / gritty grey brown unit. Possibly upper level associated with the early land reclamation. Correlated to 252.	31
250	FEATURE Timber post located at S end of 248 in internal space. Squared timber upright, unknown function.	31
251	FEATURE Timber formwork (?) posts. Not sure is formed like a barrel (staves) or if big tree, slightly shaped and internal wood rotted out. Unknown function.	31
252	Mottled orange-yellow-grey coarse sandy fill with large nodules of sandstone blocks. Approx 2 m in depth. Associated with the early reclamation.	31 (TT 12)
253	FEATURE Row of sandstone blocks, approx 600 – 700 mm into 252. Could be old or first sea wall for wharf.	31 (TT 12)
254	Horizontal wooden beams x 3. In old area 32. See sheet 240.	32
255	Vertical timber beam. Located adjacent to S wall of bond store. May be correlated to 250, but not associated with same structural elements.	32

8.1.3 Area C Running Stratigraphy (unit numbers allocated: 401 - 600)

Unit #	Description	Old Area #
401	1950s Demolition fill, lots of bricks, tar, river cobbles, very little artefactual material. Correlated to 015 (?), 214	30 29
402	FEATURE Pillar supports cut into bedrock. Correlated to 064, 231, 403	30
403	FEATURE Sandstone post supports with square cut on top. Correlated to 064, 231, 402.	30 29 27
404	Degraded sand fill surrounding 403, used to fill in the natural depressions in the bedrock (999).	30
405	Heavy clay fill, sterile. Tim also notes a sterile heavy clay natural layer, I assume that this is the same thing.	30
406	FEATURE Quarried part of the bedrock in Area 30	30
407	Dark brown grey fill	30
408	FEATURE: Sandstone, red brick and modern cement piers, c. 1950s. Correlated to 216	29 28
409	FEATURE slate in E and W walls, probably put in as damp coursing.	29 28
410	Brown clay unit below 409, perhaps also damp coursing	29 28
411	FEATURE Bricks, cinder sandstock dry coursed in stretcher bond on w and n wall and 2 courses on E wall (lower header, upper stretcher). Below 410.	29 28

Unit #	Description	Old Area #
412	Gray clay and gravel surface. Composed of gravel in a clay matrix (perhaps 2 layers compressed). Inclusions of slate, coal, river pebbles, wood fr and brick fr. Below 411	29 28
413	FEATURE timber plank below 412. possibly part of a lower floorboard course removed when 412 went in???	29 28
414	Gray clay. Sterile clay below 413, does not extend beyond the wall footings, possibly removed when 412 went in, or some weird sort of damp coursing I have not seen before.	29 28
415	Demolition / packing fill. May be a sub-unit of 401, but appears to be a packing fill as all constituents are construction materials at a denser proportion than 401.	27
416	FEATURE Brick wall of machine made bricks laid in English bond. Stepped out in lower foundation courses. Associated with 417, prob dating to military use of the site during WWII.	27
417	FEATURE Brick bay made of machine made bricks laid in English bond. N and S walls (longer walls) shaped around an in situ timber upright. Associated with 416, prob dating to military use of the site during WWII.	27
418	FEATURE Services pipe. Stoneware, continuation of unit 233. Return to the W 100 mm S of unit 419. associated with 420	27
419	FEATURE Northern wall of the bond store. Dressed sandstone blocks finished with a single tooth pick. E end damaged when beam removed as part of the capping beam process.	27
420	Clean sand fill between 233 and 416 associated with installation of services pipe 418.	27
421	FEATURE Bond store common wall. According to historic plans this should have been part of the earliest sea wall. Lower courses of the N face stepped out and one of the 403 block abutting but not keyed into the wall	27
422	FEATURE Flagged slate surface. 400 mm thick pieces of slate flagging. Located in-situ in two areas and displaced in one. Abuts 423	27
423	FEATURE Localised piece of modern concrete with blue metal aggregate rendered over an earlier piece of concrete with sandstone fragment in aggregate. Abuts 422	27
424	FEATURE Posts and sandstone surrounds. The posts are large squared timbers with a sandstone collar at the top surface. These two elements given the one feature number. Located immediately below post supports 403 in old area 27.	27 only
425	Scree packing / levelling fill used as a base for 422 and 433. A bottle dump in the S area of scree, bottles c. 1850s (see notes) but scree grey sandy matrix with small stone aggregate (river washed and angular) dates from c. 1930 - 1940	27 only
426	Mottled orange brown soil under 425. Thinning out towards wall 419 (to the N). Small fragment crushed orange sandstone in dark brown sandy matrix, culturally sterile.	27
427	Homogenous dark grey sand with natural organic material. Culturally sterile (few artefacts in test trenches - tt's). Extends to wall 419 but not to the N, therefore put in after 419 and is fill	27 29 but not to the N of 419, TT13

Unit #	Description	Old Area #
	in bond store. Some sandstone cobbles / nodules. Fill Unit, may be the same event as 428	TT14 prob in area 28, but no test trench
428	Pale yellow light coloured sand. No artefacts or sandstone frr in some places, sandstone blocks nodules and cobbles in other sections. Various thicknesses. Fill Unit. May be the same event as 427	27 ONLY TT13 TT14
429	Thin horizon of sand with shell that has wood chips mixed into it. Mid to dark grey, culturally sterile. Various thickness' perhaps reflecting sea bed levels at time of deposition.	27 28 29
430	Shell / sand horizon, natural above bedrock 999.	27

8.1.4 Area D Running Stratigraphy (unit numbers allocated: 601 - 800)

Unit #	Description	Old Area #
601	Demo rubble fill, grey brown. 100 – 200 mm thick	22/001 24/Demo 25 26/001
602	Sandy Crushed sandstone and rock fill below 601. 602 cut by several drain cuts. Yellow / orange colour, sitting on top of bedrock in the west.	22/002, 25, 26/002
603	FEATURE Modern wall running N-S. Concrete footing with a brick wall on top, possibly associated with 604.	26/modern wall A
604	FEATURE Modern wall running E-W. Sandstone and concrete footing with brick on top, associated with 603.	26/Modern Wall B
605	Dark brown sandy clay fill. Below 602 in Area 26.	22/003, 26/003
606	FEATURE Sandstone wall running E-W with a return to the N. No further info, not on my plan, refer to Timmy's mud map.	26/Old Wall A
607	FEATURE Cut in bedrock for drains 608.	
608	FEATURE Modern clay stormwater/sewer pipes set in concrete, associated with 607	26/Drain A
609	FEATURE Brick lined box, 608 drains empty into it	
610	FEATURE E-W running clay stormwater/sewer pipe. N of wall 604.	
611	FEATURE Line of timber piles, 10 m SE of back (retaining) wall. Associated with a twentieth century shed.	
612	Grey sandy unit, possibly slope / shore wash from original shoreline = mangrove mud 612 and 605 may be the same thing, just described differently in notes.	21/009, 22/Grey unit, 22/019
613	Black crushed coal layer. 100 mm thick, consistent across the eastern area, probably a yard surface.	22/006, 24/Bitumen- tar, 25/Coal

Unit #	Description	Old Area #
614	Big boulders associated with timber piles 611, used as stabilising and packing fill. I think that this is a subunit of general crushed sandstone fill 602	25
615	FEATURE Ceramic sewer / stormwater pipe running E – W. Parallel to 608 in Area 25, but 500 mm to N.	25/Drain B
616	FEATURE Ceramic sewer / stormwater pipe. Contemporary to 615. Running E/S-E	25/Drain C
617	Black unit, possibly occupation surface (no other info)	22/009, 25/Black
618	Rubble fill unit includes lots of crushed /broken grey bricks. Maybe the first general fill unit in Area D.	25/Rubble
619	FEATURE Cut in bedrock for saw pit. Associated with 621, 622 and possibly 629 (?)	
620	Fill above the timber planking within the saw pit	25/26/Sawpit 1
621	Levelling layer of timber planking within the sawpit. Includes a small amount of packing fill below.	25/26/Sawpit 2
622	FEATURE Concrete pylon footing. 2 in Area D, associated with MSB control of site????? 900 x 900 x 1100 mm high	24/Concrete block
623	FEATURE MSB building foundations / footings. Modern dry pressed bricks. Main remaining structure runs E – W with one return to the N and another to the S	21/Footing
624	White sand surrounding part of footings 623. Above 613 coal layer. I think associated with 623 construction	21/White Sand
625	Services cut. Ceramic stormwater/sewerage pipe running NW – SE through Area 21 and 24. Below 613.	21/Services Cut, 24/007
626	Concrete washout bay. Very recent excavation of trench for construction purposes	21/004
627	Large timber beam, described in the typed notes, but no real detail.	Area 21 and 24
628	FEATURE two post holes cut into the bedrock. 1 is 250 x 450 mm with timber post and wedge. The other is 280 x 430 mm. Described in the typed notes.	Area 21 and 24
629	Wood fibre matting. Unit of wood shavings (possibly from splitting shingles), and bark strips. Whole lot laid out as a level, however may be spreading out of a wood off-cuts spoil heap. Below 602 and subunits of 602.	21 and 24 'hair mat'
630	Brow mottled soil unit. Below 629, above 631.	21/23/005, 22/010, 22/011
631	Yellow lensed fill unit. Some small amount of mottling same as 629.	21/23/006, 22/016-018
632	Sticky and heavy clay, creamy grey colour, below 631. Not a natural unit, fill??	21/23/007
633	Brown mottled fill, culturally sterile. Below 632 and above 634	21/23/008
634	Orange sandstone fill unit, above bedrock in the W end of area 21 and 23.	21/23/009

Unit #	Description	Old Area #
635	FEATURE 2 timber piers / piles. Aligned E – W. Close to eastern boundary of site.	21/23/010
636	Marine sand with shell, a natural deposit.	21/015, 21/23/011
637	Marine sand without shell. A natural deposit below 636.	21/016, 21/23/012
638	FEATURE Squared off timber, possibly part of the early slipway, under 634.	21/014, 21/23/013
639	Clean sand fill under 638.	21/014, 21/23/014
640	FEATURE Round log under 638, used as a support. Associated with 639.	21/014, 21/23/015
641	Localised deposit of a hard shell / lime layer with a ferrous cap (?) in areas.	21/012
642	FEATURE Large flat stone. 1.2 m long and 1.2 m deep. May just be floating, unclear from notes.	21/013
643	Orange sandy clay layer approx 30 – 80 mm thick.	22/005
644	Light grey/yellow/cream sandy layer approx 50 – 80 mm thick	22/007
645	FEATURE Cut in bedrock, parallel to original shoreline (?)	22/008
646	Grey/brown/red fill with lenses.	22/010
647	FEATURE sandstone “sea wall”, 3 courses, remnant feature, not sure that it’s a seawall, though it does follow the original shoreline.	22/012
648	Medium brown sandy layer, approx 30 – 50 mm thick	22/013
649	Medium-dark grey sandy/clay layer 20 – 30 mm thick, artefact layer.	22/014
650	Black ash/coal (occupation surface ?) 20 – 30 mm thick.	22/015

8.2 Stratigraphic Unit Conversions from Initial 24 Area Excavation Series to Overall 4 Area Interpretive Series

8.2.1 Area A

Old unit number Area A	Running Stat unit number Area A
43 / LARGE PIT	068
43 / SAND FILL	069
42/001	001
42/002	002
42/003	003
42/004	004
42/005	005

Old unit number Area A	Running Stat unit number Area A
41/006	006
41/007	007
41 40 & 39 N / 032	032
41 40 & 39 N / 033	033
41 40 & 39 N / 034	034
41 40 & 39 N / 036	036
41CBES/001	010
41CBES/002	015
40/008	008
40/009	009
40/010	010
40/011	011
40/012	012
40/013	013
40/014	014
40/015	015
40/016	016
40/017	017
40/018	018
40/019	019
40/020	020
40 & 39 N / 030	030
40 & 39 N / 031	031
41 40 & 39 N / 032	032
41 40 & 39 N / 033	033
41 40 & 39 N / 034	034
41 40 & 39 N / 036	036
40 & 39 / 037	037
40 & 39 / 038	038
40CBEM/001	008
40CBEM/002	008
40CBEM/003	008
40CBEM/004	013
40CBEM/005	014
40CBEM/006	014

Old unit number Area A	Running Stat unit number Area A
40CBEM/007	015
40S TT4 / A	029
40S TT4 / B	070
40S TT4 / B	071
40S TT4 / C	072
39/001	001
39/008	008
39/009	009
39/010	010
39/015	015
40 & 39 N / 030	030
40 & 39 N / 031	031
41 40 & 39 N / 032	032
41 40 & 39 N / 033	033
41 40 & 39 N / 034	034
41 40 & 39 N / 036	036
40 & 39 / 037	037
40 & 39 / 038	038
39 N / 039	039
39 N / 040	040
39 N / 041	041
39 N / 042	042
39 N / 043	043
39 N / 044	044
39 & 38 / 045	045
39 & 38 / 046	046
39 & 38 / 047	047
39 & 38 N / 049	049
39 & 38 N / 050	050
39 & 38 N / 051	051
39 N / 052	052
39 N / 053	053
39 & 38 / 054	054
39 & 38 / 055	055
39 & 38 / 056	056

Old unit number Area A	Running Stat unit number Area A
39S TT5 / A	029
39S TT5 / B	070
39S TT5 / C	071
39S TT5 / D	072
39S TT5 / E	073
39S TT5 / BEDROCK	999
39S TT6 / A	029
39S TT6 / B	070
39S TT6 / C	071
39S TT6 / D	073
39S TT6 / BEDROCK	999
38/021	021
38/022	022
38/023	011
38/024	024
38/025	025
38/026	NOT A FEATURE / UNIT
38/027	027
38/028	028
38/029	029
39 & 38 / 045	045
39 & 38 / 046	046
39 & 38 / 047	047
39 & 38 N / 049	049
39 & 38 N / 050	050
39 & 38 N / 051	051
39 & 38 / 054	054
39 & 38 / 055	055
39 & 38 / 056	056
38 N / 064	064
38CBEE/001	008
38CBEE/002	009
38CBEE/003	009
38CBEE/004	011

Old unit number Area A	Running Stat unit number Area A
38CBEE/005	014
38CBEE/006	015
38S TT7 / A	029
38S TT7 / B	070
38S TT7 / C	071
38S TT7 / D	075
38S TT7 / E	072
38S TT7 / F	073
38S TT7 / G	074
38S TT7 / BEDROCK	999
38N TT9 / A	061
38N TT9 / B	067
38N TT9 / BEDROCK	999
37 / 057	057
37 / 058	058
37 / 059	059
37 N / 060	060
37 N / 061	061
37 N / 062	062
37 N / 063	063
37 N / 064	064
37 N / 065	065
37 N TT 8 / A	059
37 N TT 8 / B	061
37 N TT 8 / C	067
37 N TT10 / A	061
37 N TT10 / BEDROCK	999
37 TT 11 / A	059
37 TT 11 / B	061
37 TT 11 / C	067

8.2.2 Area B

Old unit number Area B	Running Stat unit number Area B
36 / SANDY FILL	201
36 / BLACK PATCH	202
36 / E WALL	203
36 / N WALL	204
36 / DRAIN A	205
36 / BOX A	206
36 / DRAIN B	207
36 / BOX B	208
36 / DRAIN C	209
36 / CONCRETE FOOTING AND STEEL COLLARS	210
36 / CUT IN BEDROCK	211
36 / FLOOR REMAINS	212
36 / DRAIN D	213
34 / 001	214
34 / 002	215
34 / 003	216
34 / 004	217
34 / 005	218
34 / 006	219
34 / 007	220
34 / 008	221
34 / 009	222
34 / 010	223
34 / 011	224
34 / 012	225
34 / 013	226
34 / 014	227
34 / 015	228
34 / 016	229
34 / 017	230
32 / 001	214
32 / 002	232
32 / 002	233

Old unit number Area B	Running Stat unit number Area B
32 / 003	234
32 / 004	235
32 / 005	236
32 / 006	215
32 / 007	237
32 / 008	238
32 / 009	239
32 / 010	240
32 / 011	231
32 / 012	241
32 / HORIZONTAL WOODEN BEAM	254
32 / VERTICAL WOODEN BEAM	255
31 / 000	000
31 / 001	242
31 / 002	243
31 / 003	239
31 / 004	215
31 / 005	244
31 / 006	231
31 / 007	245
31 / 008	246
31 / 009	247
31 / 010	248
31 / 011	249
31 / 012	250
31 / 013	251
31 TEST TRENCH 12 / A	252
31 TEST TRENCH 12 / SANDSTONE BLOCKS	253

8.2.3 Area C

Old unit number Area C	Running Stat unit number Area C
30 / DEMO FILL	401
30 / PILLAR SUPPORTS IN BED ROCK	402
30 / PILLAR BASES	403

Old unit number Area C	Running Stat unit number Area C
30 / DEGRADED SAND FILL	404
30 / DARK BROWN FILL	407
30 / HEAVY CLAY FILL	405
30 / CUT IN BEDROCK – QUARRY	406
29 / 001	401
29 / 002	408
29 / 003	403
29 / 004	409
29 / 005	410
29 / 006	411
29 / 007	412
29 / 008	413
29 / GREY CLAY	414
29 / GREY SAND	427
29 TEST TRENCH 16 / CRUSHED SANDSTONE	426
29 TEST TRENCH 16 / GREY SAND AND WOOD CHIPS	429
28 / 001	401
28 / 002	408
28 / 003	403
28 / 004	409
28 / 005	410
28 / 006	411
28 / 007	412
28 / 008	413
28 / GREY CLAY	414
27 / 001	415
27 / 002	416
27 / 003	417
27 / 004	418
27 / 005	419
27 / 006	420
27 / 007	403

Old unit number Area C	Running Stat unit number Area C
27 / 008	421
27 / 009	422
27 / 009	423
27 / 010	424
27 / 011	425
27 / 012	426
27 / 013	427
27 TEST TRENCH 13 / A	428
27 TEST TRENCH 13 / B	427
27 TEST TRENCH 13 / C	429
27 TEST TRENCH 13 / D	430
27 TEST TRENCH 14 / A	427
27 TEST TRENCH 14 / B	428
27 TEST TRENCH 14 / C	429
27 TEST TRENCH 14 / D	430
27 TEST TRENCH 15 / CRUSHED SANDSTONE	426
27 TEST TRENCH 15 / GREY SAND AND WOODCHIPS	429

8.2.4 Area D

Old unit number Area D	Running Stat unit number Area D
21/009	612
21/Footing	623
21/White Sand	624
21/Services Cut	625
21/004	626
21	627
21	628
21 'hair mat'	629
21/012	641
21/013	642

Old unit number Area D	Running Stat unit number Area D
21/014	638
21/014	639
21/014	640
21/015	636
21/016	637
21/23/005	630
21/23/006	631
21/23/007	632
21/23/008	633
21/23/009	634
21/23/010	635
21/23/011	636
21/23/012	637
21/23/013	638
21/23/014	639
21/23/015	640
22/001	601
22/002	602
22/003	605
22/005	643
22/Grey unit	612
22/006	613
22/007	644
22/008	645
22/009	617
22/010	630
22/010	646
22/011	630
22/012	647
22/013	648
22/014	649
22/015	650
22/016	631

Old unit number Area D	Running Stat unit number Area D
22/017	631
22/018	631
22/019	612
24/Demo	601
24/Bitumen-tar	613
24/Concrete block	622
24/007	615
24	627
24	628
24 'hair mat'	629
25	601
25	602
25/Coal	613
25	614
25/Drain B	615
25/Drain C	616
25/Black	617
25/Rubble	618
25/26	619
25/26/Sawpit 1	620
25/26/Sawpit 2	621
26/001	601
26/002	602
26/modern wall A	603
26/Modern Wall B	604
26/003	605
26/Old Wall A	606
	607
26/Drain A	608

8.3 Photographic Logs

Towns Place Stage 2 Excavations			
Digital Camera Log			27/3/03
No	Area	Description	Dir
1	D	22. Collection of metal forging.	
2	D	Sam driving the backhoe	
3	D	Sam driving the backhoe	N
4	D	22. General shot of Black area with metal	N
5	D	22. Wall with damp coursing and slate surface.	N
6	D	22. Section showing cut for drainage/foundation (?) trench	W
7	D	22. Section showing cut for drainage/foundation (?) trench	W
8	D	22. Cannon balls in situ	N

Towns Place Stage 2 Excavations			
Digital Camera Log			28/3/03
No	Area	Description	Dir
1	D	22. Caroline and Francis machine excavating	N
2	D	22. Caroline and Francis machine excavating	N
3	B	36. Tim and Clement machine excavating	S
4	B	36. Tim and Clement machine excavating	S
5	D	22. House jack	
6	D	22. House jack	
7	D	22. House jack	
8	C	30. Post hole with wood	N DO
9	B	43. The pit	W
10	B	43. The pit	W
11	B	36. West along south wall (scale on drain A)	W
12	B	36. Concrete footings (scale on drain A)	W
13	B	36. Box A and north wall looking west	W
14	B	36. Concrete footings – steel collar and drain A	N
15	B	36. Quarry cut in bedrock, scale on top of cut	NW
16	B	36. West end of area showing footings, bedrock and walls	S
17	B	36. South wall, west end	S
18	B	36. Western end of south wall, removed	S
19	B	36. Box B	N
20	C	30. East wall of Area 30	E
21	B	36. East wall	E
22	B	36. North wall and drain B	W
23	D	22. Hearth	S
24	D	22. General shot	S
25	D	22. Foundation stone	S
26	D	22. General shot	S
27	D	22. Wall / section shot	SW
28	D	22. Wall / section shot	W
29	D	22. General shot across hearth and foundation stone	N
30	D	22. General shot across hearth and foundation stone	N
31	A	42. General shot, pre excavation, showing wall	W
32	A	42. General shot, pre excavation, showing wall	W
33	A	42. General shot, scale on wall	S
34	A	41. General shot, wall in section	W
35	A	41. General shot, wall in section	W
36	A	41 and 42. Line of wall pre-excavation	SW
37	D	22. C4. Cannon ball area	N
38	D	22. C4. Cannon ball area	N
39	D	22. C4. Timber floor / surface?	W
40	D	22. C4. Stratigraphy on west side of excavated area	W
41	D	22. C4. Stratigraphy on west side of C5 showing timber floor	E
42	D	22. C4. Stratigraphy on west side of C5 showing timber floor	E
43	D	22. C4. Stratigraphy on west side of C5 showing cannon balls in situ	E
44	D	22. C4. General shot of cannon ball area	S
45	D	22. C4. General shot of cannon ball area	S
46	D	22. C4. Tar associated with timber in cannon ball area	W
47	C	30. General shot	NE
48	C	30. General shot	NE
49	C	30. General shot	NE
50	C	30. East end, scale between two pillars	N
51	C	30. General shot	SE

52	C	30. Pit in SE corner	SE
53	C	30. Pit in SE corner	SE
54	C	30. Pit in SE corner, back of south wall	S
55	A	41. Scale on top of poor quality wall	S
56	A	41. Scale showing depth of excavation	S
57	A	42. Scale on top of wall	S
58	A	42. Scale showing depth of excavation	S
59	D	22. Hearth	S
60	D	22. Hearth and timber	S
61	D	22. Hearth	E
62	D	22. Hearth and timber	E
63	D	22. Hearth and timber	S

Towns Place Stage 2 Excavations			
Digital Camera Log			31/3/03
No	Area	Description	Dir
1	A	41. Wall and section	S
2	A	41. Wall and section	S
3	A	41. Wall and section	S
4	A	41. Wall and section	S
5	A	41. Wall and section	S
6	A	41 and 42. Wall and section	SE
7	A	41 and 42. Wall and section	SW
8	A	41. Flagstones and section	N
9	A	41. Flagstones and section	N
10	A	42. Flagstones and section	N
11	A	42. Flagstones and section	N

Towns Place Stage 2 Excavations			
Digital Camera Log			2/4/03
No	Area	Description	Dir
1	A	41. Wall on N-S axis, abutts possible sea wall	W
2	A	41. Wall on N-S axis, abutts possible sea wall	W
3	A	41. Wall on N-S axis, abutts possible sea wall	W
4	A	41. Bedrock shore line	W
5	A	41. E of drain, bedrock shore line	N
6	A	41. W of drain, bedrock shore line	N
7	A	41. W of drain, bedrock shore line	N
8	D	22. Cast iron pump	
9	D	22. Cast iron pump	
10	D	22. Cast iron pump	
11	D	22. Cast iron pump	
12	D	22. C5 (hearth) and C6	S
13	D	22. C5 (hearth) and C6	N
14	D	22. C5 (hearth) and C6	E
15	D	22. C5 (hearth) and C6	W
16	D	22. C5 and C6, tumbled wall to N of hearth	N
17	D	22. C5 and C6, tumbled wall to N of hearth	W
18	D	22. C5 and C6, tumbled wall to N of hearth	N
19	D	22. C5 and C6, tumbled wall to N of hearth	E
20	D	26. General view looking towards rock face	W
21	D	26. General view looking towards rock face	W
22	D	26. General view looking towards rock face	W
23	D	26. General view looking towards rock face	W
24	D	22? Looking towards cannon ball area	N
25	D	22? Looking towards cannon ball area	N
26	D	22? Looking towards cannon ball area	N
27	D	22. General view, area 21 in b/g	E
28	D	21. General view	NW
29	D	21. General view	N
30	D	21. General view, area 22 in b/g	W
31	D	21. General view, area 22 in b/g	W
32	D	22. Stratigraphy from seawall, sterile mangrove crap	E

Towns Place Stage 2 Excavations			
Digital Camera Log			8/4/03
No	Area	Description	Dir
1	D	25. General shot after removal of demolition fill (black layer in f/g)	W
2	D	25. General shot after removal of demolition fill (black layer in f/g)	W
3	D	25. General shot after removal of demolition fill (black layer in f/g)	W
4	D	25. General shot after removal of demolition fill (black layer in f/g)	W
5	D	25. Post removal of demolition fill (range pole is in alignment with the timber piers / posts.	NW
6	D	25. Timber piers / posts	NW
7	D	25. Timber piers / posts	NW
8	D	25. Rocky area behind timber piers	N
9	D	25. Stratigraphy in N side of area	N
10	D	25. Stratigraphy to N of modern sewer line	N
11	D	25. Timber piers / posts	SW
12	D	25. Close up of timber post no. 7	W

Towns Place Stage 2 Excavations			
Digital Camera Log			9/4/03
No	Area	Description	Dir
1	D	25. General shot of area	W
2	D	25. General shot of area	W
3	D	25. View along timber piers / posts	SW
4	D	25. Rocky area to W of timber piers	S
5	D	25. Rocky area to W of timber piers	S
6	D	25. Rocky area to W of timber piers	N
7	D	25. Cut alongside bond store wall and window	E
8	D	25. Cut alongside bond store wall and window	S
9	D	25. Cut alongside bond store wall and window	S
10	D	25. Rocky area to W of timber piers	WSW
11	D	25. Sea wall ????	N
12	D	25. Poss square cut pit in bedrock	W
13	D	25. Rock, poss sea wall	N
14	D	25. Rock, poss sea wall	N
15	D	25 and 22. T4. Sea wall	W
16	D	25 and 22. T4. Sea wall	W
17	D	25. T4. Close up of poss post hole	?
18	D	25. T4. Close up of poss post hole	?

Towns Place Stage 2 Excavations			
Digital Camera Log			10/4/03
No	Area	Description	Dir
1	D	25. Detail of wood in situ	W
2	D	25. View of rock / slab before removal	W
3	D	25. View of rock / slab before removal	N
4	D	25. WIP	?
5	D	25. WIP	?
6	D	25. WIP	?
7	D	25. WIP	?
8	D	25. WIP	?
9	D	25. WIP	?
10	D	25. Wood in situ	N
11	GEN	General site shot	?
12	GEN	General site shot	?
13	GEN	General site shot	?
14	GEN	General site shot	?
15	GEN	General site shot	?
16	GEN	General site shot	?
17	D	25. General area shots	?
18	D	25. General area shots	?
19	D	25. General area shots	?
20	D	25. General area shots	?
21	D	25. General area shots	?
22	D	25. General area shots	?
23	D	25. General area shots	?
24	D	25. General area shots	?
25	D	25. General area shots	?
26	D	25. General area shots	?
27	D	25. General area shots	?

Towns Place Stage 2 Excavations			
Digital Camera Log			15/4/03
No	Area	Description	Dir
1	D	22. WIP, heading into area 21	SE
2	D	20. WIP, test trench 2	NE
3	D	21. Wood, (Timmy's slipway)	SE
4	D	21. Start of excavation / wood beam, lowest level	E
5	D	21. Start of excavation / wood beam, lowest level	E
6	D	20. Test trench 2 final	S
7	D	20. Test trench 2 final	N
8	D	20. Test trench 3, WIP	NE
9	D	20. Test trench 3, final	NE
10	D	21. Cut in bedrock showing wooden wedges x 2	N
11	D	21. Removal of unit C coming down onto unit D, wood and artefacts	E
12	D	21. Showing stratigraphy across N side	N
13	D	21. Removal of Layer C to expose Layer D	E
14	D	21. Removal of Layer C to expose Layer D	NE
15	/	TEST PHOTO	/
16	D	24. Cut in bedrock similar to cut in Area 21 (shot 10)	N
17	D	21. WIP, exposing bitumen yard surface	NW
18	D	20 and 21. General views WIP	?
19	D	20 and 21. General views WIP	?
20	D	20 and 21. General views WIP	?
21	D	20 and 21. General views WIP	?
22	D	20 and 21. General views WIP	?
23	D	20 and 21. General views WIP	?
24	D	20 and 21. General views WIP	?
25	D	20 and 21. General views WIP	?
26	D	20 and 21. General views WIP	?
27	D	20 and 21. General views WIP	?
28	D	20 and 21. General views WIP	?
29	D	20 and 21. General views WIP	?
30	D	20 and 21. General views WIP	?
31	D	20 and 21. General views WIP	?
32	D	20 and 21. General views WIP	?
33	D	20 and 21. General views WIP	?
34	D	20 and 21. General views WIP	?
35	D	20 and 21. General views WIP	?
36	D	20 and 21. General views WIP	?
37	D	20 and 21. General views WIP	?
38	D	20 and 21. General views WIP	?
39	D	20 and 21. General views WIP	?
40	D	20 and 21. General views WIP	?
41	D	20 and 21. General views WIP	?
42	D	20 and 21. General views WIP	?
43	D	20 and 21. General views WIP	?
44	D	20 and 21. General views WIP	?
45	D	20 and 21. General views WIP	?
46	D	20 and 21. General views WIP	?
47	D	20 and 21. General views WIP	?
48	D	20 and 21. General views WIP	?
49	D	20 and 21. General views WIP	?
50	D	20 and 21. General views WIP	?
51	D	20 and 21. General views WIP	?

52	D	20 and 21. General views WIP	?
53	D	20 and 21. General views WIP	?
54	D	20 and 21. General views WIP	?
55	D	20 and 21. General views WIP	?
56	D	20 and 21. General views WIP	?

Towns Place Stage 2 Excavations			
Digital Camera Log			16/4/03
No	Area	Description	Dir
1	D	21. Timber in situ, Tim's saw pit	S
2	D	21 and 22. General view, area 21 in f/g	W
3	D	21 and 22. General view, area 21 in f/g	W
4	D	21. Section on E face	E
5	D	21. Saw pit	S
6	D	21. Saw pit	S
7	D	21. Saw pit	S
8	D	21. Saw pit	S
9	D	21. Saw pit	E
10	D	21. Cut in bedrock next to saw pit, post (?)	S
11	D	21. Cut in bedrock next to saw pit, post (?)	W
12	D	21. Cut in bedrock next to saw pit, post (?)	N
13	D	21 and 24. N post hole / bedrock cut x 2	N
14	D	21. Timmy hard at work	E
15	D	21. Coal yard surface and MSB building footings	E
16	D	21. Checking E section	E
17	D	Digger fun for everyone	SE
18	D	21. E section	E
19	D	21. E section	E
20	D	21. Cut in bedrock, E area	S
21	D	21 (part 24). View from above showing coal yard surface and area of saw pit	E
22	D	21 (part 24). View from above showing coal yard surface and area of saw pit	E
23	D	21 (part 24). View from above showing coal yard surface and area of saw pit	E
24	D	21 (part 24). View from above showing coal yard surface and area of saw pit	E
25	D	21 (part 24). View from above showing coal yard surface and area of saw pit	E
26	D	21 (part 24). View from above showing coal yard surface and area of saw pit	E
27	D	21. WIP in saw pit	S
28	D	21. Timber beam post hole (E) and pubic hair mat	N
29	D	21. Timber beam post hole (E) and pubic hair mat	S
30	D	21. Timber beam post hole (E) and pubic hair mat	N
31	D	21. Cut in Bedrock – drain (?)	ENE
32	D	21. Beam with post holes	E
33	D	21. Coconut matting in Tim's drain	AB
34	D	21. Coconut matting in Tim's drain	AB
35	D	21. E post hole with timber post (W post in b/g)	W
36	D	21. E post hole with timber post (W post in b/g)	W
37	D	21. Profile in N section	N
38	D	21. Profile in N section	N
39	D	21. General view of the saw pit area	S
40	D	21. General view of the saw pit area	S
41	D	21. General view of the saw pit area	E
42	D	21. General view of the saw pit area	W
43	D	21. General view of the saw pit area	W
44	D	21. General view of the saw pit area	NW
45	D	21. General view of the saw pit area	NW
46	D	21 and 24. General view, Area 24 in f/g	N

47	D	21 and 24. General view, Area 24 in f/g	N

Towns Place Stage 2 Excavations			
Digital Camera Log			28/1/04
No	Area	Description	Dir
1	GEN	Whole site	N
2	GEN	Site SW section	N
3	GEN	Site W section	N
4	GEN	Site middle section	N
5	GEN	Site north section	N
6	GEN	43. General view	N
7	GEN	35 and 30. General view	N
8	GEN	35 and 30. General view	N
9	GEN	42 and 41. General view	N
10	GEN	37 – 40. General view	N
11	GEN	Central portion of the two Bond Stores	N
12	GEN	Southern side of Bond Store 1	N
13	GEN	Southern side of Bond Store 1	E
14	GEN	Northern side of Bond Store 2	W
15	GEN	Northern side of Bond Store 2	W
16	D	Area D, southern portion	W
17	D	21 and 22. General view	W
18	D	22. Backfilled wall trench, view to S	S
19	D	22. Backfilled wall trench, view to S	S
20	D	22. Backfilled wall trench, view to S	S
21	D	22. Backfilled wall trench, view to N	N
22	D	22. Backfilled wall trench, view to N	N
23	D	22. Soil profile (E-W) near edge of backfill, shaded	N
24	D	22. Soil profile (E-W) near edge of backfill, shaded	N
25	D	22. Soil profile (E-W) near edge of backfill, unshaded	N
26	D	22. Soil profile (E-W) near edge of backfill, unshaded	N
27	D	22. Floorboards	W
28	D	22. Floorboards	W
29	D	22. Floorboards, showing river pebbles that were in place above	W
30	D	22. Floorboards, showing river pebbles that were in place above	W
31	D	22. NW corner of house showing floorboards	W
32	D	22. NW corner of house showing floorboards, detail of boards affixed by bolt	W
33	D	22. NW corner of house showing floorboards, showing relation to previously photographed floorboards	E
34	D	22. NW corner of house showing floorboards, showing relation to previously photographed floorboards	E

Towns Place Stage 2 Excavations			
Digital Camera Log			29/1/04
No	Area	Description	Dir
1	D	22. Initial overview of at commencement of days excavation	E
2	D	22. Initial overview of at commencement of days excavation	E
3	D	22. Progress shot, overview of E area, black layer probably continues under the brown	E
4	D	22. Progress shot showing black yard surface to L and R and yellow demolition fill in the centre	E
5	D	22. W portion, detail of floorboards	E
6	D	21 and 22. Plan views of exposed black yard surface (Dalgety Rd) 001	E
7	D	21 and 22. Plan views of exposed black yard surface (Dalgety Rd) 001	E
8	D	21 and 22. Plan views of exposed black yard surface (Dalgety Rd) 001	E
9	A	42. Unit 002 Friable brown layer, S of sea wall	SE
10	D	21 and 22. Ground view of exposed black surface 001	E
11	D	21. Cut for wall, N of 001	E
12	D	21. Cut for wall, N of 001, showing full extent of wall	E
13	D	21. Plan view of timber post	E
14	D	21. Elevation view of timber post	E

Towns Place Stage 2 Excavations			
Digital Camera Log			30/1/04
No	Area	Description	Dir
1	A	42. 001 S – SE portion of area 42	NE
2	A	42. 001 S – SE portion of area 42	SW
3	D	21 and 22. Soil profile showing black layer 001 above crushed sandstone, detail	E
4	D	21 and 22. Soil profile showing black layer 001 above crushed sandstone, detail	E
5	D	21 and 22. Soil profile showing black layer 001 above crushed sandstone, detail	E
6	D	21 and 22. Soil profile showing black layer 001 above crushed sandstone, detail, shaded	E
7	D	21 and 22. WIP, Trench 2	E
8	D	21 and 22. WIP, Trench 2 N side, showing similar stratigraphy to that in frames 3 – 5	N
9	D	21 and 22. WIP, Trench 2 N side, showing similar stratigraphy to that in frames 3 – 5, detail further to E	N
10	D	21 and 22. overview of the strat profiles detailed in the two previous frames	NE
11	D	21. Unit 005, sandstone rubble layer when cleaned	E
12	D	21. 2 x timber posts and brown layer running under black layer	E
13	D	21. 006, S most of the two timber posts	N
14	D	21. 007, N most of the two timber posts	N

Towns Place Stage 2 Excavations			
Digital Camera Log			2/2/04
No	Area	Description	Dir
1	D	24. Section showing stratigraphy in S area	S
2	D	24. Detail showing middle layers of section	S
3	D	24. Detail showing thinner middle soil layers at E end of section	S
4	D	24. Detail of pipe and pipe trench at W end of section	S
5	D	24. Angled to show pipe trench edge with river pebbles in backfill	SE
6	D	24. Brick dump possibly associated with the demolition of MSB building	ESE
7	D	24. Brick dump possibly associated with the demolition of MSB building	ESE
8	D	24. Brick demolition dump with coal yard surface in f/g	S
9	D	24. Brick demolition dump with coal yard surface in f/g	S

Towns Place Stage 2 Excavations			
Digital Camera Log			3/2/04
No	Area	Description	Dir
1	D	22. 009 surface showing burn area with high concentration of bone and shell etc	NW
2	D	22. 009 surface showing burn area with high concentration of bone and shell etc	NW
3	D	22. WIP Detail of stratigraphy, W portion of profile to the E of structure (angle is skewed relative to structure)	NNW
4	D	22. WIP Detail of stratigraphy, E portion of profile to the E of structure (angle is skewed relative to structure)	NNW
5	D	21. N baulk showing stratigraphy	N
6	D	21. E baulk showing stratigraphy	E
7	D	22. Cleaned section (photographed in frames 3 and 4) W section showing wall trench and internal deposits	NNW
8	D	22. Cleaned section (photographed in frames 3 and 4) E section showing wall trench and internal deposits	NNW
9	D	22. Cleaned section (photographed in frames 3 and 4) W section showing wall trench and internal deposits, detail	NNW
10	D	21. General view of brick and mortar wall and area below it	N
11	D	21. Detail of brick and mortar wall and area below it	N
12	D	21. General view of brick and mortar wall and area below it, W end	N
13	D	21. Stratigraphic profile of units below 005 showing remains of 001 (where it was deep between the timber posts), 009 and 013, showing lensing of layers	SSE
14	D	21. Detail of frame 13	SSE

Towns Place Stage 2 Excavations			
Digital Camera Log			4/2/04
No	Area	Description	Dir
1	D	21. Stratigraphic profile of units below 005 showing remains of 001 (where it was deep between the timber posts), 009 and 013, showing lensing of layers, early morning light	ESE
2	D	21. Detail of frame 1, early morning light	ESE
3	C	30. WIP loading the trucks	ESE
4	D	22. Clean up of site, Mark videoing	NE
5	C	30. WIP loading the trucks	ESE
6	GEN	Overview of site from Towns Place East	NE
7	GEN	Overview of site from Towns Place East	E
8	C	30. General view from Towns Place East	E
9	D	21. Stratigraphic profile showing 014, 015 and 016	E
10	D	21. Stratigraphic profile showing 014, 015 and 016, detail	E
11	C	30. Galvanised roofing at base of fill unit	SE
12	B	34. WIP excavating bulk fill unit from the cellar	SE
13	B	34. Detail of timber located along NW wall under bulk fill unit	W
14	B	34. Detail of galvanised roofing debris	E
15	B	34. Stone floor	E
16	B	34. Stone floor showing edge near SW corner	N

Towns Place Stage 2 Excavations			
Digital Camera Log			5/2/04
No	Area	Description	Dir
1	A	39. 010, brown organic layer	NE
2	A	39 and 40. 014 and 010 and clay pipe	NE
3	A	40. Clay pipe onto concrete base	NW
4	A	40. Removal of clay pipe	NE
5	A	40. Brick lining of clay pipe	NW
6	A	40. Section (top) of clay pipe	NE
7	A	40. Brick pipe junction	NE
8	D	21. Cut for timber posts 002 into fill unit 005	NW
9	D	21. Cut for timber posts 002 into fill unit 005	N
10	B	34. Sandstone pillar built on rubble fill	SE
11	B	34. Detail, sandstone pillar built on rubble fill	SE
12	GEN	Loading the trucks	E
13	A	40. 015 orangey sandstone layer	N
14	A	40. 015 orangey sandstone layer	NE
15	C	29. WIP, note lensing of fill in stratigraphic profile	SE
16	C	29. WIP on final clean up	E
17	C	29. WIP on final clean up	E
18	C	29. Floorboards in situ	SE
19	C	29. Floorboards in situ	NW
20	C	29. General view from doorway in N wall looking W	W

Towns Place Stage 2 Excavations			
Digital Camera Log			6/2/04
No	Area	Description	Dir
1	C	29. Detail W wall showing timber on bedrock with gravel surface, bricks and slate in wall	NW
2	C	29. Detail W wall showing slate and decomposing timber above line of bricks	NW
3	C	29. Multiple levels of timber above bedrock and below gravel unit	NW
4	C	29. Multiple levels of timbers in central area	NW
5	C	29. Duncan at work in pooling water	SE
6	C	29. Pillar in central area	SW
7	C	29. Timber extending into pooling water, note timber post support in right of frame	SE
8	C	29. ½ wall at SE end of second bond store	NE
9	C	29. Detail of brick and fill conglomerate on top of sandstone pillars	SW
10	A	40. Detail of 020	NW
11	A	40. 018, fill along sea wall	NW
12	A	40. 019, detail of seeds	-
13	A	40. 019, overview	NE
14	A	40. 019, general view from Hickson Rd hoarding	NW
15	A	40. 019, general view from Hickson Rd hoarding	NE
16	C	28. Abutting SE wall, general view	E
17	C	28. Detail of SE wall abutting to main NE wall of bond store 2	SE
18	C	28. Overview of recent reworking of blocks as pipe support	S
19	C	28. Window on NE wall of bond store	NE
20	C	28. WIP	SW
21	C	29. Pillar in NE corner of Area 29	NE
22	C	29. Pillar in NE corner of Area 29, detail showing poor construction	NE
23	A	41 and 42. Sandstone wall parallel to sea wall	NW
24	A	41 and 42. Sandstone wall parallel to sea wall	NW
25	A	41 and 42. Sandstone wall parallel to sea wall	S
26	C	28. SE edge of 28: wall, pillar, alcove and window	NE
27	C	28. Detail of alcove	NE
28	C	28. Pillar and wall (and wall of Area 29)	SE
29	C	28. Detail of wall and bricks to W of wall	NE
30	C	28. Detail of bricks showing black decayed brick course to the W of red bricks	NW
31	C	28. Detail of bricks showing black decayed brick course to the W of red bricks, further to NE than frame 30, showing edge of pillar	NW

Towns Place Stage 2 Excavations			
Digital Camera Log			9/2/04
No	Area	Description	Dir
1	B	34. Final showing surface	S
2	B	34. Surface in profile	SE
3	B	34. WIP cleaning	SE
4	B	34. Sandstone pillar base	NE
5	B	34. Detail of sandstone pillar base in Frame 4	NE
6	B	34. Detail of surface near sandstone pillar base	NE
7	A	38. Sandstone surface 021	SW
8	A	38. Sandstone surface 021 with contiguous surface S of capping beam	SW
9	A	38. 021	SE
10	A	41 and 42. Sandstone wall, bottom course	W
11	A	41 and 42. Sandstone wall, bottom course	S
12	A	41 and 42. Sandstone wall, bottom course	S
13	B	34. Rubble against NE wall	NW
14	B	34. Elevation of NE wall	NE
15	B	34. Detail of NE wall	NE
16	A	38. 023 and 024	NE
17	A	38. 023 and 024	NE
18	A	38. 024 and 025	N
19	B	34. Stratigraphic profile of NE half of Area 34, showing yellow/orange/grey clay and sandstone rubble	SW
20	B	34. Same profile further south of Frame 19, note temporary disappearance of rubble	SW
21	A	38. 022 surface (cut 024 in left of frame)	SE
22	A	38. 022 in elevation	SE
23	A	38. 025, sandstone and coal surface	SE
24	A	38. WIP removing unit 022	-
25	B	34. Stratigraphic profile running SE/NW down centre of Area 34 (SE portion)	SW
26	B	34. Stratigraphic profile running SE/NW down centre of Area 34 (NW portion)	SW
27	B	34. Stratigraphic profile running SE/NW down centre of Area 34 (SE portion), detail showing transition from crushed sandstone to grey clay sandstone.	SW
28	B	34. Stratigraphic profile running SE/NW down centre of Area 34 (NW+ portion), detail showing transition from crushed sandstone to grey clay sandstone.	SW
29	B	34. 2 nd sandstone pillar from NW wall, demolished	SE
30	B	34. 2 nd sandstone pillar from NW wall, demolished	SW

Towns Place Stage 2 Excavations			
Digital Camera Log			10/2/04
No	Area	Description	Dir
1	A	38. Fill unit 028, detail showing river pebble fill	SE
2	A	38. Fill unit 028, detail showing river pebble fill	NE
3	B	34. In situ timbers identified in fill unit	NE
4	B	34. 008, timber 1	SE
5	B	34. 008, timber 2 and sandstone surrounds	SE
6	B	34. 008, timber 3	SE
7	B	34. 008, general view, timbers 1 and 2	N
8	B	34. 008, general view, timbers 2 and 3	E
9	B	34. 008, timber 2 and sandstone surrounds	NE
10	A	38. General view of area	NW
11	A	38. Sandstone blocks used as fill	NE
12	A	38. different clays, ie yellow and grey	NW
13	A	38. Partly exposed timbers beams and planks	SW
14	A	38. yellow clay which looks to be under artefact rich black deposit	NW
15	A	38. Detail of timber	SW
16	A	38. Detail of timber	AB
17	A	38. Detail of timber	AB
18	A	38. Detail of timber	AB

Towns Place Stage 2 Excavations			
Digital Camera Log			11/2/04
No	Area	Description	Dir
1	GEN	General. View from Dalgety Rd	SW
2	GEN	General. View from Dalgety Rd	S
3	GEN	General. View from Dalgety Rd	E
4	GEN	General. View from Dalgety Rd and corner of Windmill St	E
5	GEN	General. View from Windmill St Bridge	NE
6	GEN	General. View from Windmill St Bridge	E
7	GEN	General. View from Windmill St Bridge	N
8	GEN	General. View from Towns Place East	N
9	A	39. Kerb, cobbles and pavers (overlying area)	ESE
10	A	39. Kerb, cobbles and pavers (overlying area)	S
11	A	39. Kerb, cobbles and pavers (overlying area)	NE
12	A	39. Kerb, cobbles and pavers (overlying area)	NE

Towns Place Stage 2 Excavations			
Digital Camera Log			
No	Area	Description	Dir
1	A	39. 039 cobbles between sea wall and concrete	NE
2	A	39. 039 cobbles between sea wall and concrete	NW
3	A	38 and 39. 039 and sandstone blocks (041 – 043)	NE
4	A	39. General view of 039 including concrete	NW
5		Brian and Till	-
6	A	39. 039 general view from hoarding	NW
7	A	39 and 40. 039 general view from hoarding	N
8	A	38 and 39. 039 general view from hoarding	N
9	A	38. 041 and 042 sandstone blocks	SE
10	A	38. 041, 042 and 043 sandstone blocks	NE
11	A	38. 041, detail	-
12	A	39. 039 and 040, detail of granite cobbles	W
13	A	39. 039 and 040, detail of granite cobbles	W
14	A	38. Yellow sandstone road base	E
15	A	38. Yellow sandstone road base	E
16		Tim	-
17		John	-
18	A	38. 4 th sandstone block, in line with Bond Store pillars	-
19	A	38. General view of block and wall (above road surface)	NE
20	A	39. Wall above road surface	E
21	A	39. Square sandstone block, in line with 1950s sandstone pillars	W
22	A	39. WIP uncovering the sea wall	SE
23	A	38. Square sandstone block	W
24	B	32. SE wall of room showing 4 x pipes and formwork 002	SE
25	B	32. SE wall of room, unit 002	SE
26	B	32. SE wall of room, showing units 003, 004, 005 and 006 in f/g	NE
27	B	32. Detail of frame 26 showing units 003, 004, 005 and 006	-
28	A	38 and 39. Change in stratigraphy across area,)33 next to sea wall and 049 black	NE
29	A	38 and 39. WIP, stratigraphy and sandstone pillars	N
30	B	32. Detail of 003, 004 and 005, section above wall 008	NE
31	B	32. Detail of 002 wall and pipe	SE
32	B	32. Detail of 007 abutting 008	SW
33	B	32. Detail of 007 abutting 008 (extreme detail!)	SW
34	A	38. Black coaly layer and brown	NW
35	A	38 and 39. Black coaly layer and brown	SW

Towns Place Stage 2 Excavations			
Digital Camera Log			13/2/04
No	Area	Description	Dir
1	B	32. WIP removal of 010	E
2	B	32. Cut / sandstone block, feature 011 in fill 010	E
3	B	32. Cut / sandstone block which was part of floor 006 in SW corner	SW
4	B	32. Wooden beam in fill 010	W
5	A	39N. Support wall for sea wall join and rubble fill	NW
6	A	39N. Support wall for sea wall, join	SW
7	A	39N. Support wall for sea wall, join	SE
8	A	39N. Rubble packing behind sea wall	SW
9	A	39N. Support wall and rubble packing, elevation	NW
10	B	32. Section showing wall 002, pipes, floor 006 and fill below	SE
11	B	32. Wooden beam in SE corner of room	SE
12	A	39N. Sea wall support wall and rubble in elevation	SW
13	B	32. Additional beam in fill 010. Similar orientation to beam shown in Frame 4	W
14	B	32. Cut sandstone block which was part of floor 006, located in diagonally opposite corner to remnant of 006	NE
15	A	38S. Features in situ, WIP	SE
16	A	38S. WIP, crushed basalt unit removed to expose black surface	SE
17	B	32. Wooden beam in NE corner of room	E
18	A	38S. Section showing stratigraphy, photo taken in line with part of the seawall removed by later disturbance	NE
19	B	34. Sump as excavated of fill	SW
20	B	34. Sump, detail of brickwork	SW
21	B	34. Sump, view from above	AB
22	B	38. WIP, sandstone cobbles as exposed which are loose with no mortar	SE
23	B	34. Sump from above, interface of units 015 and 016	AB
24	B	34. Sump from above, interface of units 015 and 016	AB
25	B	34. General view of sump	AB
26	GEN	General overview of the site from Dalgety Rd	VAR
27	GEN	General overview of the site from Dalgety Rd	VAR
28	GEN	General overview of the site from Dalgety Rd	VAR
29	GEN	General overview of the site from Dalgety Rd	VAR
30	GEN	General overview of the site from Dalgety Rd	VAR
31	GEN	General overview of the site from Dalgety Rd	VAR
32	GEN	General overview of the site from Dalgety Rd	VAR
33	GEN	General overview of the site from Dalgety Rd	VAR
34	GEN	General overview of the site from Dalgety Rd	VAR
35	GEN	General overview of the site from Dalgety Rd	VAR

Towns Place Stage 2 Excavations			
Digital Camera Log			16/2/04
No	Area	Description	Dir
1	A	37. General and details of the big sump hole in the SE corner	
2	A	37. General and details of the big sump hole in the SE corner	
3	A	37. General and details of the big sump hole in the SE corner	
4	A	37. General and details of the big sump hole in the SE corner	
5	A	37. General and details of the big sump hole in the SE corner	
6	A	37. General and details of the big sump hole in the SE corner	
7	A	37. General and details of the big sump hole in the SE corner	
8	A	37. General and details of the big sump hole in the SE corner	
9	A	37. General and details of the big sump hole in the SE corner	
10	A	37. General and details of the big sump hole in the SE corner	
11	A	37. General and details of the big sump hole in the SE corner	
12	A	37. General and details of the big sump hole in the SE corner	
13	D	General view of external face of Bond Store 2 N wall	E
14	D	General view of external face of Bond Store 2 N wall	E
15	D	General view of external face of Bond Store 2 N wall	E
16	D	General view of external face of Bond Store 2 N wall	E
17	D	Large log N of Bond Store 2 N wall. Details pre clean up	
18	D	Large log N of Bond Store 2 N wall. Details pre clean up	
19	D	Large log N of Bond Store 2 N wall. Details pre clean up	
20	D	Large log N of Bond Store 2 N wall. Details pre clean up	
21	D	Large log N of Bond Store 2 N wall. Details pre clean up	
22	D	Large log after cleaning, NB 'check out' or toe hold cuts for boards	
23	D	Large log after cleaning, NB 'check out' or toe hold cuts for boards	
24	D	Large log after cleaning, NB 'check out' or toe hold cuts for boards	
25	D	Large log after cleaning, NB 'check out' or toe hold cuts for boards	
26	D	Large log after cleaning, NB 'check out' or toe hold cuts for boards	
27	D	Large log after cleaning, NB 'check out' or toe hold cuts for boards	
28	D	Large log after cleaning, NB 'check out' or toe hold cuts for boards	
29	D	Large log after cleaning, NB 'check out' or toe hold cuts for boards	
30	D	Large log after cleaning, NB 'check out' or toe hold cuts for boards	
31	D	Large log after cleaning, NB 'check out' or toe hold cuts for boards	
32	D	Large log after cleaning, NB 'check out' or toe hold cuts for boards	
33	D	Large log after cleaning, NB 'check out' or toe hold cuts for boards	
34	A	38. Profile of sandstone block (1 of 5) with square hole, 2 nd from S end	W
35	A	38. Profile of sandstone block (1 of 5) with square hole, 2 nd from S end	W
36	A	38. Profile of sandstone block (1 of 5) with square hole, 2 nd from S end	W
37	A	37. 058, 060 and sea wall	SE
38	A	37. 058, 060 and sea wall	SW
39	A	37. 060 from above	NE
40	A	37. Detail of 060 keyed into sea wall	SW
41	A	37. 058, 060 and sea wall	NE
42	A	37. 058, 060 and sea wall	NE
43	A	37. 061 and 058	NE

Towns Place Stage 2 Excavations			
Digital Camera Log			17/2/04
No	Area	Description	Dir
1	A	37. 062 and 063, cobbles and sandstone floor	W
2	A	37. 062, 063 and 064	W
3	A	37. Detail of 064	W
4	A	37. Detail of 062 and 063	W
5	A	37. 058, 062, 063 and 064	S
6	A	37. Corner of 058, 062 and 063 (and s. floor, sea wall and cobbles)	SW
7	A	37. 058, 062, 063 and 064	S
8	A	37. Detail 058, 062, 063 and 064	W
9	A	37. Detail 058, 062, 063 and 064	E
10	A	37. Detail of junction of 058, 062 and 063	AB
11	A	39. Test trench to bedrock along seawall	VAR
12	A	39. Test trench to bedrock along seawall	VAR
13	A	39. Test trench to bedrock along seawall	VAR
14	A	39. Test trench to bedrock along seawall	VAR
15	A	39. Test trench to bedrock along seawall	VAR
16	A	39. Test trench to bedrock along seawall	VAR
17	A	39. Test trench to bedrock along seawall	VAR
18	A	39. Test trench to bedrock along seawall	VAR
19	A	39. Test trench to bedrock along seawall	VAR
20	A	39. Test trench to bedrock along seawall	VAR
21	A	39. Test trench to bedrock along seawall	VAR
22	A	39. Artistic impulses at work!	-
23	A	39. Test trench to bedrock along seawall	S
24	A	37. WIP General view	VAR
25	A	38. Test trench to bedrock along S wall of Bond Store 1	VAR
26	A	38. Test trench to bedrock along S wall of Bond Store 1	VAR
27	A	38. Test trench to bedrock along S wall of Bond Store 1	VAR
28	A	38. Test trench to bedrock along S wall of Bond Store 1	VAR
29	A	37. Test trench to bedrock along sea wall	SE
30	A	37. Test trench to bedrock along sea wall	SE
31	A	37. Test trench to bedrock along sea wall	SE
32	A	37. Test trench to bedrock along sea wall	SE
33	A	37. Test trench to bedrock along sea wall	SE
34	A	37. Test trench to bedrock along sea wall	SE
35	A	37. Sea wall and sandstone floor	NE
36	A	37. Sea wall and sandstone floor	NE
37	A	37. Sea wall and sandstone floor	NE
38	A	37. Sea wall and sandstone floor	NE
39	A	37. Sea wall and sandstone floor	S
40	A	37. Sea wall and sandstone floor	S
41	A	37. Concrete floor with timber posts	SSW
42	B	31. Detail of timber posts	-
43	B	31. Detail of timber posts	-
44	B	31. Modern wall on top of floor	N
45	B	31. Modern brick housing	S
46	B	31. Modern concrete floor	N
47	B	31. N wall of brick housing	S
48	B	31. N wall of brick housing	S
49	-	MYSTERY SHOT	-
50	GEN	WIP General site shots	VAR
51	GEN	WIP General site shots	VAR

52	GEN	WIP General site shots	VAR
53	GEN	WIP General site shots	VAR
54	GEN	WIP General site shots	VAR
55	GEN	WIP General site shots	VAR
56	GEN	WIP General site shots	VAR
57	GEN	WIP General site shots	VAR
58	GEN	WIP General site shots	VAR
59	GEN	WIP General site shots	VAR
60	GEN	WIP General site shots	VAR
61	GEN	WIP General site shots	VAR
62	GEN	WIP General site shots	VAR
63	GEN	WIP General site shots	VAR
64	GEN	WIP General site shots	VAR
65	GEN	WIP General site shots	VAR
66	GEN	WIP General site shots	VAR

Towns Place Stage 2 Excavations			
Digital Camera Log			18/2/04
No	Area	Description	Dir
1	B	31. Post support block on slate and timber bedding, elevation	E
2	B	31. Post support block on slate and timber bedding, elevation	E
3	B	31. Timber post resting o stepped lower course of wall	SW
4	B	31. Timber post, WIP excavating	W
5	B	31. General view of E wall of '1839' map counting house	SW
6	B	31. General view of W wall of '1839' map counting house	SW
7	B	31. General view of Area 31	SW
8	B	31. General view of Area 31	SW
9	B	31. Wall (E wall of 1839 map counting house) NE corner cut by 'rebuilt sea wall'	SE
10	B	31. NE corner 1839 map counting house from above	NE
11	B	31. SE corner 1839 map counting house cut by Bond Store wall	W
12	B	31. WIP excavating large timber	SW
13	B	31. Post support block on slate and timber bedding, detail of slate etc	NW
14	B	31. 3 timber posts along S Bond store wall	W
15	B	31. Timber post support and E 1839 map counting house wall	NW
16	B	31. Beam in situ in 'sea wall' (common Bond Store wall)	N
17	B	31. Beam in situ in 'sea wall' (common Bond Store wall) detail	NE
18	B	31. Pedestalled post support prior to removal	SE
19	C	27. WWII brick structure, general view	SW
20	C	27. WWII brick structure, general view	SE
21	C	27. WWII brick structure, general view, note relief	E
22	C	27. Brick wall	NW
23	C	27. Brick wall	W
24	C	27. Brick wall, WWII brick structure and 'original sea wall', relationship of features	SW
25	C	27. Brick wall, WWII brick structure and 'original sea wall', relationship of features	SW

Towns Place Stage 2 Excavations			
Digital Camera Log			19/2/04
No	Area	Description	Dir
1	C	27. General view of SE end of area showing cut and backfill associated with piling works	SE
2	C	27. General view of SE end of area showing cut and backfill associated with piling works	NE
3	C	27. Test frame	S
4	D	24. WIP cleaning timbers	NW
5	D	24. Coal yard surface	NE
6	D	24. Cut for concrete services trench	SW
7	D	24. WIP cleaning timbers, machine and Sue	NE
8	C	27. Concrete on sandstone flagging surface	SE
9	C	27. Concrete on sandstone flagging surface	SW
10	C	27. Sandstone blocks surrounding timber post	NE
11	C	27. Sandstone blocks surrounding timber post	SW
12	C	27. Sandstone blocks surrounding truncated timber post	SW
13	C	27. Detail of Frame 12 showing where a 007 block has been removed from above	SW
14	D	24. Section showing coal yard surface (having removed fill and drain / pipe on E edge)	NE
15	D	24. Section showing stratigraphy	NE
16	D	24. Section showing stratigraphy	NE
17	D	24. Section showing stratigraphy	SE
18	D	24. Wall 008 in b/g with units 009 and 011 in f/g	SW

Towns Place Stage 2 Excavations			
Digital Camera Log			20/2/04
No	Area	Description	Dir
1	D	25 and 26. Large tree trunk with cuts	W
2	D	25 and 26. Three large timbers in situ	N
3	D	25 and 26. Detail of cuts in large tree trunk	N
4	D	25 and 26. Detail of cuts in large tree trunk	N
5	D	24. Timbers on bedrock	E
6	D	24. WIP cleaning by hand	E
7	D	24. WIP cleaning by machine	NE
8	D	25. Saw pit area, prior to clean up of pit	N
9	D	25. Saw pit area, prior to clean up of pit	E
10	D	24. Timber beam in foundation of N Bond Store wall	SW
11	D	24. Timber levelling planks on bedrock for foundation of N Bond Store wall	SW
12	D	24. Timber levelling planks on bedrock for foundation of N Bond Store wall	SW
13	D	24. Clay packing / fill around beam	S
14	D	24. N Bond store wall, proud / offset lower course	SE
15	C	27. Section showing pier under square cut sandstone block	SW
16	C	27. Section showing stratigraphy	S
17	C	27. Section showing stratigraphy	S
18	D	24. Mystery wood and iron item	N
19	D	24. Mystery wood and iron item	W
20	D	24. Mystery wood and iron item	W
21	D	24. Timbers in situ	NW
22	D	24. Timbers in situ	NW
23	D	24. General view of saw pit, view from Dalgety Rd	S
24	D	24. General view sea wall tie back walls	S
25	D	24. General view of sea wall alignment	E
26	D	24. General view of saw pit	SW
27	D	24. General view of saw pit	SW
28	B	31. General view of counting house	NW
29	GEN	GEN. General site overview	N

Towns Place Stage 2 Excavations			
Digital Camera Log			21/2/04
No	Area	Description	Dir
1	A	40. Test Trench 4, pre excavation	NW
2	A	40. Test Trench 4, excavated to a depth of approx 1 m, 3 sandstone blocks and rubble exposed	NW
3	A	40. Test Trench 4, excavated to a depth of approx 1 m, 3 sandstone blocks and rubble exposed	NW
4	A	40. Test Trench 4, showing stratigraphy	NW
5	A	40. Test Trench 4, showing stratigraphy	NW
6	A	40. Test Trench 4, excavated to a depth of 1.6 m	NW
7	A	40. Test Trench 4, excavated to a depth of 2 m, prior to flooding	NW
8	A	40. Test Trench 4, excavated to a depth of 2 m, prior to flooding	SW
9	A	40. Test Trench 4, excavated to a depth of 2 m, prior to flooding	NE
10	A	39. Test Trench 5, pre excavation	NW
11	A	39. Test Trench 5, excavated to a depth of 500 – 600 mm showing sandstone blocks / fill	NW
12	A	39. Test Trench 5, excavated to a depth of 500 – 600 mm showing sandstone blocks / fill	SW
13	A	39. Test Trench 5, excavated to a depth of 2 m	NW
14	A	39. Test Trench 5, excavated to a depth of 2 m	SW
15	A	39. Test Trench 5, excavated to a depth of 2.3 m through sand an shell natural deposits	NW
16	A	39. Test Trench 5, excavated to a depth of 2.3 m through sand an shell natural deposits	NW
17	A	39. Test Trench 5, bottom of trench, exposed degraded bedrock at 2.6.m	N
18	A	39. Test Trench 5, bottom of trench, exposed degraded bedrock at 2.6.m	N
19	A	39. Test Trench 5, bottom of trench, exposed degraded bedrock at 2.6.m	S
20	A	38. Test Trench 6, pre excavation	NW
21	A	38. Test Trench 6, excavated to a depth of 50 – 60 cm, exposed sandstone blocks and rubble	NW
22	A	38. Test Trench 6, excavated to a depth of 1.4 m	NW
23	A	38. Test Trench 6, excavated to a depth of 1.4 m	SW
24	A	38. Test Trench 6, excavated to a depth of 1.8 m	NW
25	A	38. Test Trench 6, excavated to a depth of 1.8 m	SW
26	A	38. Test Trench 6, photo showing bedrock at 2 m	NW
27	A	38. Test Trench 6, photo showing bedrock at 2 m	SW
28	A	38. Test Trench 6, final, bedrock at 2 m	NW
29	C	27? Test Trench 11, pre excavation	NW
30	C	27? Test Trench 11, WIP removing sand and rubble fill	AB

Towns Place Stage 2 Excavations			
Digital Camera Log			23/2/04
No	Area	Description	Dir
1	A	38. Test Trench 7, pre excavation	S
2	A	38. Test Trench 7 showing stratigraphy at 50 cm	SE
3	A	38. Test Trench 7 showing stratigraphy at 60 cm	SE
4	A	38. Test Trench 7 showing stratigraphy at 80 cm, note exposed sandstone cobbles / nodules	NE
5	A	38. Test Trench 7 showing stratigraphy at 2 m, note shell horizon	NE
6	A	38. Test Trench 7 showing stratigraphy at 2 m, note shell horizon	NE
7	A	38. Test Trench 7 showing stratigraphy at 2 m, note shell horizon	NE
8	A	38. Test Trench 7 showing stratigraphy at 2 m, note shell free horizon	NE
9	A	38. Test Trench 7 showing stratigraphy at 2 m, note shell free horizon	NE
10	A	38. Test Trench 7 showing stratigraphy at 2 m, note shell free horizon	SE
11	A	38. Dry Site????	W
12	A	38. Test Trench 7 showing stratigraphy at 2.3 – 3 m, note sand with shell, sand without shell and then bedrock	NE
13	A	37. Test Trench 8, pre excavation	SE
14	A	37. Test Trench 8, showing stratigraphy at 80 cm, note shell horizon	NE
15	A	37. Test Trench 8, showing stratigraphy at 80 cm, note shell horizon	NE
16	A	37. Test Trench 8, showing stratigraphy at 1.6 m	NE
17	A	37. Test Trench 8, showing stratigraphy at 1.8 m, bedrock	NE
18	A	37. Test Trench 8, showing stratigraphy at 1.8 m, bedrock	NE
19	A	37. Test Trench 9 (west side of sea wall), pre excavation	NE
20	A	37. Test Trench 9, final, bedrock at 40 cm	NE
21	A	37. Test Trench 9, final, bedrock at 40 cm	NE
22	A	37. Test Trench 10 (west side of sea wall), pre excavation	N
23	A	37. Test Trench 10, at bottom of slope in bedrock	N
24	A	37. Test Trench 10, at bottom of slope in bedrock	N
25	A	37. Test Trench 10, at bottom of slope in bedrock	S
26	A	37. Hand excavated test pit against the sea wall	NE
27	A	37. Hand excavated test pit against the sea wall	SE
28	A	37. Hand excavated test pit against the sea wall	NE
29	A	37. Hand excavated test pit against the sea wall	NE
30	A	37. Hand excavated test pit against the sea wall	NE
31	B	Test Trench 11, excavated to a depth of 1.6 m	W
32		Test Frame	
33		Test Pit (Charles's)	
34		Test Pit (Charles's)	
35		Test Pit (Charles's)	
36		Test Pit (Charles's)	
37		Test Pit (Charles's)	
38		Test Pit (Charles's)	
39		Test Pit (Charles's)	
40		Test Pit (Charles's)	
41		Test Pit (Charles's)	
42		Test Pit (Charles's)	
43		Test Pit (Charles's)	
44		Test Pit (Charles's)	
45		Test Pit (Charles's)	
46		Test Trench 11, excavation showing stratigraphy	W
47		Test Trench 11, excavation showing stratigraphy	W
48		Test Trench 11, excavation showing stratigraphy	N
49		Test Trench 11, excavation showing stratigraphy	N
50		24. General views of the slipway	

51		24. General views of the slipway	
52		24. General views of the slipway	
53		24. General views of the slipway	
54		24. General views of the slipway	
55		24. General views of the slipway	
56		24. General views of the slipway	
57		24. General views of the slipway	
58		24. General views of the slipway	
59		24. General views of the slipway	
60	B	Test Trench 12 (counting house), pre excavation	N
61	B	Test Trench 12, excavated to a depth of 70 cm	N
62	B	Test Trench 12, excavated to a depth of 70 cm	N
63	B	Test Trench 12, excavated to a depth of 70 cm	N
64	B	Test Trench 12, excavated to a depth of 2 m, showing what may be a very early sea wall (large squared off sandstone blocks)	E
65	B	Test Trench 12, excavated to a depth of 2 m, showing what may be a very early sea wall (large squared off sandstone blocks)	E

Towns Place Stage 2 Excavations			
Digital Camera Log			24/2/04
No	Area	Description	Dir
1		Test Trench to the south of Test Trench 11, pre excavation (trying to locate the Counting House sea wall)	W
2		Test Trench 11, 1830s sea wall	W
3		Test Trench 11, 1830s sea wall	W
4		Test Trench 11, 1830s sea wall	W
5		Test Trench 11, 1830s sea wall	W
6		Test Trench 11, showing Bond Store wall built on top of 1830s sea wall	N
7	C	27. Test Trench 13, pre excavation, looking for early sea wall	N
8	C	27. Test Trench 13, partially excavated showing stratigraphy, shell and sand	NW
9	C	27. Test Trench 13, showing stratigraphy under wall	S
10	C	27. Test Trench 13, WIP	E
11	C	27. Test Trench 13, final showing stratigraphy and bedrock	NE
12	C	27. Test Trench 13, final showing stratigraphy	SE
13	C	27. Test Trench 13, final showing stratigraphy	SE
14	C	27. Test Trench 13, final towards wall	S
15	C	27. Test Trench 13, final, stratigraphy under wall	S
16	C	27. Test Trench 13, final showing stratigraphy, note shell layer	SE
17	C	27. Test Trench 13, final	S
18	D	24. Test Trench 14, pre excavation	N
19	D	24. Test Trench 14, excavated to a depth of 70 cm, note sandy horizon	N
20	D	24. Test Trench 14, shell and sand exposed with wood chips	N
21	D	24. Test Trench 14, shell and sand exposed with wood chips	N
22	D	24. Test Trench 14, detail of wood chips on shell and sand	N
23	D	24. Test Trench 14, detail of wood chips on shell and sand	N
24	D	25. Saw pit section	N
25	D	25. Saw pit section	N
26	D	24. Test Trench 14, section, west end on high point of bedrock	N
27	D	24. Test Trench 14, section	S
28	D	24. Test Trench 14, section	S
29	D	24. Test Trench 14, section showing various heights of bedrock	E
30	D	24. Test trench 14, bedrock section	N
31	D	24. south end extension / excavation (writing unclear)	N
32	D	21. Details of saw adze floor and timber posts	
33	D	21. Details of saw adze floor and timber posts	
34	D	21. Details of saw adze floor and timber posts	
35	D	21. Details of saw adze floor and timber posts	
36	D	21. Details of saw adze floor and timber posts	
37	D	21. Details of saw adze floor and timber posts	
38	D	21. Details of saw adze floor and timber posts	
39	D	24. Cow bone in situ	E
40	D	21. Section of timber post	N
41	D	21. Section of timber post	N
42	D	21. Section of timber post	N
43	C	Test Trench 16 (internal of Bond Store) various shots	E
44	C	Test Trench 16 (internal of Bond Store) various shots	E
45	C	Test Trench 16 (internal of Bond Store) various shots	E
46	C	Test Trench 16 (internal of Bond Store) various shots	E
47	C	Test Trench 16 (internal of Bond Store) various shots	E
48	C	Test Trench 17 (internal of Bond Store) bedrock	S

Appendix B

Walsh Bay Heritage Technology Conservation Management Plan

Policy

Item Name

Goods Lift

Item Reference

82

Overall Significance

Regional

Executive Policy Summary

This items are of regional significance and have been conserved in situ. They are managed by others.

Statement of Significance

This lift is significant because it is one of the few remaining industrial technological items remaining on this pier. It demonstrates the interaction and flow of people between the levels on this pier. It is a an early example of an electrically operated lift.

Item Conservation Management Type

Type 4- Structural

Conservation Policy Statement

Managed by others.

Schedule of Sites

6 Pier 4/5

Level

Level G - 2

Approved Building Proposal

Outside development area. Building to be retained

Item Proposal

Retain in situ

Action Policy

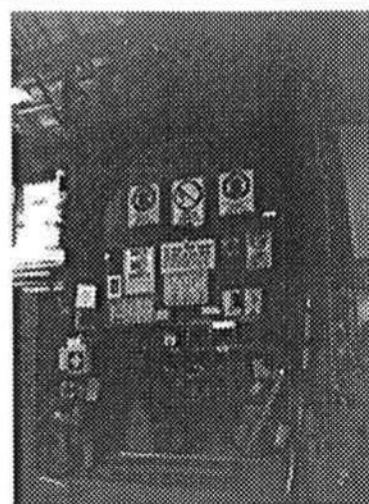
Managed by others

Current Ownership

Owned by NSW Government

Reference

O.H.M. Consultants



O.H.M. Consultant 1999

Walsh Bay Heritage Technology Conservation Management Plan

Assessment

Item Name
Goods Lift

Item Reference

Overall Significance

82

Regional

Statement of Significance

This lift is significant because it is one of the few remaining industrial technological items remaining on this pier. It demonstrates the interaction and flow of people between the levels on this pier. It is a an early example of an electrically operated lift.

Description

Goods lift with a timber framed car. The lift has vertically opening timber doors. The electric motor is housed above the lift well on level 2.

History

The lift was installed after a major upgrade of the wharf building in the 1920's.

Function and Operation

Electrically operated goods and passenger lift which operated between ground and the upper floor. It was used for moving goods and personnel between levels on this pier.

Associated Items

Individual	<input checked="" type="checkbox"/>
Assemblage	<input type="checkbox"/>
Collection	<input type="checkbox"/>
System	<input type="checkbox"/>
Operational Group	<input type="checkbox"/>

State Themes

People	<input type="checkbox"/>
Technology	<input checked="" type="checkbox"/>
Industry	<input checked="" type="checkbox"/>
Utilities	<input type="checkbox"/>
Transport	<input type="checkbox"/>
Movable	<input type="checkbox"/>
Industrial Relic	<input checked="" type="checkbox"/>
Events	<input type="checkbox"/>

Rarity

Last remaining lift in Pier 4/5

Date printed: 1911/1999

Walsh Bay Heritage Technology Conservation Management Plan

Item Name		Action
Goods Lift		Item Reference 82
Schedule of Sites		6 Pier 4/5
Condition		
Excellent		
Schedule of Works		
Check for termites & fumigate if required Dry clean timber Inspect & repair as necessary the mountings for the motor		
Conservation Issues		
N/A		
Interpretation Action		
* Oral history item * Non public area. * To be fully recorded.		

Walsh Bay Heritage Technology Conservation Management Plan

Treatment

Item Name

Goods Lift

Item Reference

82

Overall Significance

Regional

Condition

Excellent

Schedule of Sites

6 Pier 4/5

Level

Level G - 2

Policies

Managed by others

Cost

Managed by others

Schedule of Works

Check for termites & fumigate if required

Dry clean timber

Inspect & repair as necessary the mountings for the motor

Treatment Proposal

Treatment Record Number & Date

Date printed: 19/11/1999

Walsh Bay Heritage Technology Conservation Management Plan

Policy

Item Name

Deadhouse

Item Reference

52

Overall Significance

Local

Executive Policy Summary

This item is of local significance and is to be conserved and adapted into the new interior format.

Statement of Significance

The deadhouse represents an integral part of the goods handling and Custom's practice on the wharves. It links the importing of items with the Bond Stores located on Hickson Road.

Item Conservation Management Type

Type 4- Structural

Conservation Policy Statement

To be conserved and adapted into the new interior format.

Schedule of Sites

8 Pier 2/3

Level

Ground

Approved Building Proposal

To be conserved and adapted for new interior structure.

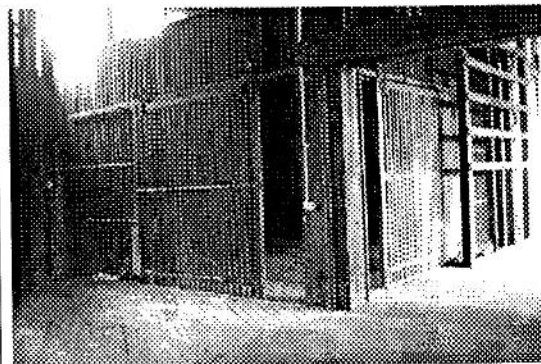
Item Proposal

Retain in situ

Action Policy

5A - Conservation of Industrial Fabric

Current Ownership



O.H.M. Consultants

Reference

Walsh Bay Heritage Technology Conservation Management Plan

Assessment

Item Name
Deadhouse

Item Reference

Overall Significance

52

Local

Statement of Significance

The deadhouse represents an integral part of the goods handling and Custom's practice on the wharves. It links the importing of items with the Bond Stores located on Hickson Road.

Description

A timber batten walled room forming a secure space to store bonded goods. The room has two sliding doors to the shed and a large internal shelf to two sides (east and south walls).

History

The rooms are part of the original design concept of Walsh Bay Wharves where the design was to streamline stevedoring practices by have bonded import conveniences located near to the ship for easy handling.

Function and Operation

A temporary secure storage room for imported items that required excise to pay to Custom's. The items would later be moved to the Bond & Free Stores located on Hickson Road.

Rarity

Only five deadhouses are in the Walsh Bay precinct three of these are located on WB 8/9 the others on WB 2/3

Associated Items

Individual	<input type="checkbox"/>
Assemblage	<input type="checkbox"/>
Collection	<input type="checkbox"/>
System	<input checked="" type="checkbox"/>
Operational Group	<input type="checkbox"/>

State Themes

People	<input type="checkbox"/>
Technology	<input type="checkbox"/>
Industry	<input checked="" type="checkbox"/>
Utilities	<input type="checkbox"/>
Transport	<input checked="" type="checkbox"/>
Movable	<input type="checkbox"/>
Industrial Relic	<input checked="" type="checkbox"/>
Events	<input type="checkbox"/>

Walsh Bay Heritage Technology Conservation Management Plan

Action

Item Name

Deadhouse

Item Reference

52

Schedule of Sites

8 Pier 2/3

Condition

The dead house is in a structurally sound condition, some of the wall battens require replacement.

Schedule of Works

Dry clean timber
Repair and/or replace defective timberwork and metalwork.
Check for termites & fumigate if required

Conservation Issues

Interpretation Action

Interpretated as a component of the goods handling system.
This item should be included in an Interpretation Strategy for the wharves as a whole.
Oral history item
To be included in site tour

Walsh Bay Heritage Technology Conservation Management Plan

Treatment

Item Name

Deadhouse

Item Reference

52

Overall Significance

Local

Condition

The dead house is in a structurally sound condition, some of the wall battens require replacement.

Schedule of Sites

8 Pier 2/3

Level

Ground

Policies

5A - Conservation of Industrial Fabric

Cost

Schedule of Works

Dry clean timber

Repair and/or replace defective timberwork and metalwork.

Check for termites & fumigate if required

Treatment Proposal

Treatment Record Number & Date

Date printed: 19/11/1999

Walsh Bay Heritage Technology Conservation Management Plan

Policy

Item Name

Travelling Gantries

Item Reference

54

Overall Significance

N/A

Executive Policy Summary

Removed

Statement of Significance

Removed.

Item Conservation Management Type

Conservation Policy Statement

Schedule of Sites

8 Pier 2/3

Level

Approved Building Proposal

Item Proposal

No Action.

Action Policy

Current Ownership

Owned by NSW Government

Reference

Godden Mackay Pty Ltd

Date printed: 19/11/1999

Walsh Bay Heritage Technology Conservation Management Plan

Assessment

Item Name
Travelling Gantries

Item Reference

54

Overall Significance

N/A

Statement of Significance

Removed.

Description

The gantries have been removed. There were originally eight gantries, four on either wharf.. They were constructed of riveted mild steel and timber and had a concrete deck at first floor level. In 1989, the underside lifting gear was missing and the original manual drive mechanism had been converted to electricity. They did not appear operable at that time.

History

Installed in association with the construction of the Shore Shed for Wharf 2/3, completed by 1922.

Function and Operation

The gantries moved on two rails along the length of the apron, one rail near the outer edge of the apron, the other mounted at first floor level on the facade of the jetty shed. Their main purpose was as a loading platform for the first floor level but they were also originally fitted with lifting gear on their underside enabling them to be used to move cargo along the wharf apron.

Rarity

Associated Items

Individual	<input type="checkbox"/>
Assemblage	<input type="checkbox"/>
Collection	<input type="checkbox"/>
System	<input type="checkbox"/>
Operational Group	<input type="checkbox"/>

State Themes

People	<input type="checkbox"/>
Technology	<input type="checkbox"/>
Industry	<input type="checkbox"/>
Utilities	<input type="checkbox"/>
Transport	<input type="checkbox"/>
Movable	<input type="checkbox"/>
Industrial Relic	<input type="checkbox"/>
Events	<input type="checkbox"/>

Date printed: 1911/1999

Walsh Bay Heritage Technology Conservation Management Plan

Action

Item Name

Travelling Gantries

Item Reference

54

Schedule of Sites

Condition

8 Pier 2/3

Removed

Schedule of Works

Item removed, not applicable.

Conservation Issues

Location of the items. The possibility of reinstating the items should be explored.

Interpretation Action

Walsh Bay Heritage Technology Conservation Management Plan

Treatment

Item Name

Travelling Gantries

Item Reference

54

Overall Significance

N/A

Condition

Removed

Schedule of Sites

8 Pier 2/3

Level

Policies

Cost

Schedule of Works

Item removed, not applicable.

Treatment Proposal

Treatment Record Number & Date

Date printed: 19/11/1999

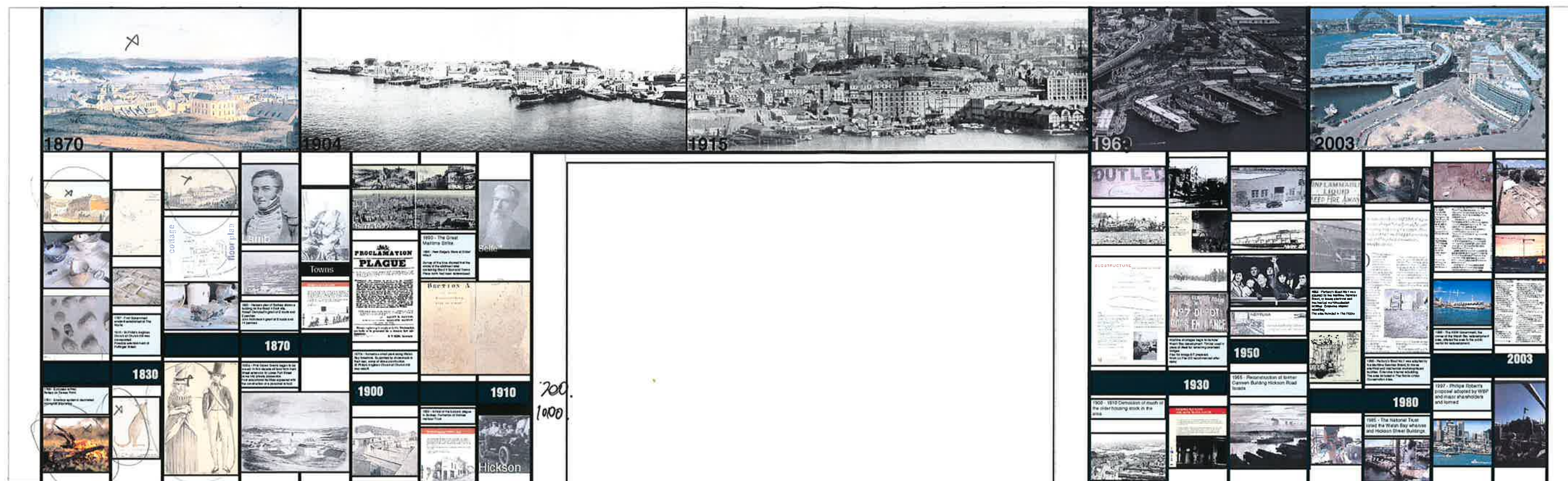
Appendix C

CROSS ROADS



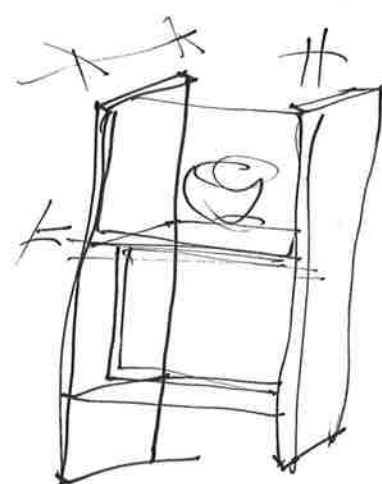
BREEZEWAY
INTERPRETATION
PIER 2.3.

from water

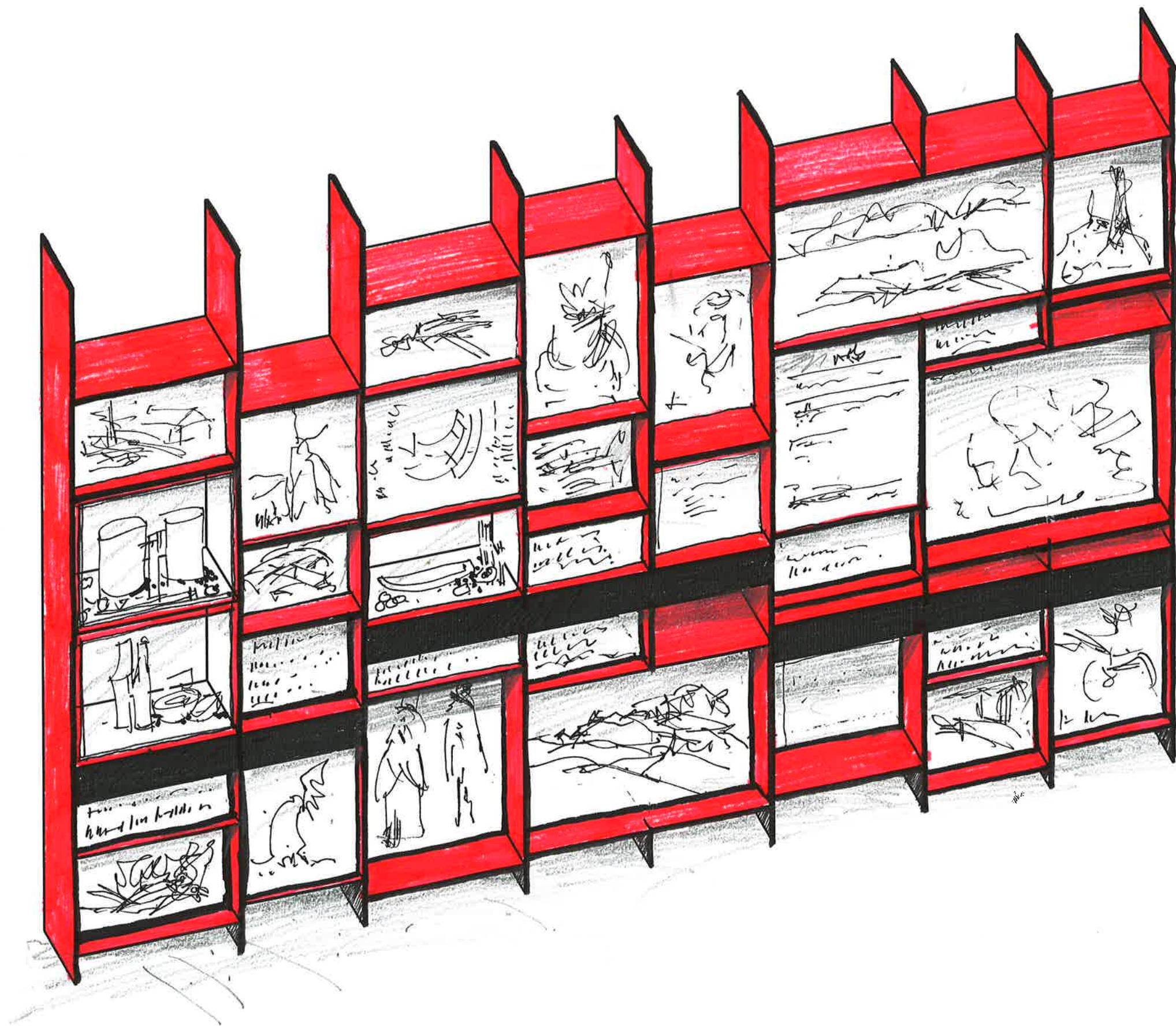


800 | 600 | 800 | 700 | 600 | 750 | 600 | 600 | 450

1000
1000
1000



Pier 2/3 Interpretation Panel



Appendix D



Walsh Bay, Pier 2/3, Movable Heritage Use & Interpretation Plan

June 2011



3-D Projects

TABLE OF CONTENTS

1.0	INTRODUCTION.....	3
1.1	BACKGROUND.....	3
1.2	AIMS.....	3
1.3	METHODOLOGY.....	4
1.4	AUTHORSHIP.....	5
1.5	THE WALSH BAY MOVABLE HERITAGE COLLECTION	6
1.6	EXISTING INTERPRETATION.....	8
1.7	APPROACH	17
2.0	CONSTRAINTS AND OPPORTUNITIES	18
3.0	AUDIENCE.....	19
4.0	HISTORICAL SUMMARY	21
4.1	CHRONOLOGY.....	21
5.0	STATEMENT OF SIGNIFICANCE	21
6.0	CONSERVATION POLICY FOR INTERPRETATION.....	23
7.0	THEMES FOR INTERPRETATION.....	24
7.1	ARCHITECTURE.....	25
7.2	COMMERCE	25
7.3	ENGINEERING	25
7.4	GOVERNMENT ADMINISTRATION	25
7.5	HOUSING	25
7.6	LABOUR.....	25
7.7	PASTORALISM.....	25
7.8	PERSONS.....	25
7.9	TECHNOLOGY	25
7.10	TRANSPORT.....	25
7.11	URBAN DESIGN.....	25
8.0	INTERPRETATION PLAN.....	26
9.0	INTERPRETATION GUIDELINES	28
9.1	IMPLEMENTATION AND MANAGEMENT RECOMMENDATIONS.....	28
9.1.1	CONSULTATION.....	28
9.1.2	ARCHAEOLOGY	28
9.1.3	IMPLEMENTATION: DISPLAY PANELS.....	28
9.1.4	PRACTICAL	28
9.1.5	MAINTENANCE	28
9.1.6	DESIGN	28
10.0	COLLECTION MANAGEMENT.....	29
10.1	DISPLAY	29
10.1.1	CONSERVATION RECOMMENDATIONS FOR DISPLAY ITEMS	30
10.2	STORAGE.....	30
10.3	REUSE & RECYCLE	30
10.4	DISPOSAL	30
11.0	CONCLUSION AND RECOMMENDATIONS	31
12.0	APPENDIX A: OBJECT DISPLAY PROPOSAL BY 3D PROJECTS.....	32
13.0	APPENDIX B: ITEMS RECOMMENDED FOR RETENTION & FURTHER STORAGE	35
14.0	APPENDIX C: ITEMS RECOMMENDED FOR REUSE & RECYCLE	36
15.0	APPENDIX D: ITEMS RECOMMENDED FOR DISPOSAL.....	37
16.0	COPY OF THE WALSH BAY PIER 2-3 MOVABLE HERITAGE CATALOGUE FROM THE GODDEN MACKAY LOGAN REPORT	38

Job No/ Document No	Description of Issue	Prepared By/ Date	Reviewed by Project Manager/Director	Approved by Manager/Director
11-029	Draft	CK & KD/24.06.11	KD/24.06.11	Name: Kerime Danis Date:
11-029	Final Draft	KD/28.06.11	KD/28.06.11	
11-029	Final			
Note: This document is preliminary unless it is approved by Manager or Director of City Plan Heritage				

1.0 INTRODUCTION

1.1 BACKGROUND

City Plan Heritage has been engaged by NSW Maritime to prepare the following Heritage Interpretation Plan, including a strategy to use components of the Walsh Bay Pier 2/3 Movable Heritage Collection within the subject site, which was allocated for cultural uses as part of the 1997 development application for redevelopment of Walsh Bay. Currently the Collection is being housed inside the main shed at Pier 2/3.

The Use & Interpretation Plan is to accommodate Communities NSW (Arts NSW), the new tenant at Pier 2/3, which has entered into a 99 year lease with NSW Maritime, including the identification of opportunities to display and interpret important elements of the Collection, both inside and outside the main shed. There will not be appropriate space to display the entire collection and therefore NSW Maritime is also seeking assistance and advice to locate an appropriate storage facility for those items that cannot be displayed, yet must be kept as part of the Collection.

Additionally, it is considered that there is an opportunity to cull the extensive collection (including a shipping container full of artefacts removed from the nearby Towns Place archaeology site). However, it is a condition of the Heritage Office (formerly Heritage Branch, NSW Department of Planning) that a strategy must be prepared to address all of these issues prior to any relocation or culling of the Collection.

1.2 AIMS

The aim is to have an Use & Interpretation Strategy that:

- Identifies which items of the collection should be displayed based on significance assessment (provided by Godden Mackay Logan Heritage Consultants).
- Identifies appropriate locations for the interpretation of the Movable Heritage Collection.
- Makes recommendations for culling the collection based on significance assessment, number of similar items in the collection, and cost-effectiveness of further storage.
- Identifies possible locations for safe and long term further storage of the remaining collection that cannot be displayed and/or is too important to the collection [as a whole] to discard.
- Identifies the subject and general content of interpretation through interpretive themes which communicate the historic significance of the site and its relationship to the communities of Sydney and Walsh Bay.
- Describes the existing display and heritage interpretation throughout the Walsh Bay Precinct and formulate how the interpretation at Pier 2/3 can successfully co-exist.

- Provides the thematic context to inspire and develop interpretation proposals.
- Provides guidelines for the preparation and implementation of interpretation proposals by NSW Maritime.

1.3 METHODOLOGY

This Interpretation Strategy/Plan has been prepared in accordance with the *NSW Heritage Manual* and the NSW Heritage Office's recently formulated *Heritage Interpretation Policy* (August 2005). The general philosophy and process adopted is that guided by the Australia ICOMOS *Burra Charter 1999*.

The Burra Charter (1999) defines interpretation as meaning, "all the ways of presenting the cultural significance of a place. Interpretation may be a combination of the treatment of fabric; the use of and activities at the place; and the use of introduced explanatory material.'

The NSW Heritage Office *Heritage Interpretation Policy* (August 2005) presents the following 'Ingredients for Best Practice in Heritage Interpretation':

1. PEOPLE AND CULTURE: Respect for the special connections between people and items
2. SIGNIFICANCE: Understand the item and convey its significance
3. RECORDS AND RESEARCH: Good research is at the heart of effective interpretation. Use existing records of the item, research additional information, and make the records and research publicly available (subject to security and cultural protocols)
4. AUDIENCE: Explore, respect and respond to the identified audience
5. THEMES: Make reasoned choices about themes, ideas and stories
6. ENGAGING THE AUDIENCE: Stimulate thought and dialogue, provoke response and enhance understanding
7. CONTEXT: Research and understand the physical, historical, spiritual and contemporary context of the item and related items; and respect local amenity and culture
8. SUSTAINING SIGNIFICANCE: Develop interpretation that strengthens and sustains the significance of the item, its character and authenticity
9. CONSERVATION PLANNING: Integrate interpretation in conservation planning, and in all subsequent stages of a conservation project
10. MAINTENANCE, EVALUATION AND REVIEW: Include interpretation in the ongoing management of an item; provide for regular maintenance, evaluation and review
11. SKILLS & KNOWLEDGE: Involve people with relevant skills, knowledge and experience
12. COLLABORATION: Collaborate with organisations and the local community

In addition, City Plan Heritage believes that there are principles of best practice in designing interpretive signs and interpretive devices that are fundamental to a successful outcome. Sources for this can be found on the Interpretation Australia website under *Best Practice*

Guidelines Reference Review. In particular, the University of Queensland, School of Tourism and Leisure Management endorses these principles (<http://tourism.uq.edu.au/signage/text-selection.html>). The following key elements of effective interpretive signage and text usage have been utilised in this report and should be consistent across all new signage and display areas at Walsh Bay, Pier 2/3:

1. Communication is most effective when text is aimed towards a 5th grade reading level so that it can be easily read and comprehended by people of most ages, backgrounds, and abilities. This does not imply that text must be 'dumbed down', but rather it should not incorporate jargon, overly scientific expressions, or difficult vocabulary words. Simplifying is best.
2. Sentences should be simply composed and uncomplicated (generally no more than 15 words).
3. Text written in a conversational tone is more effective than academic or didactic 'textbook' text. Most people learn and absorb information better when it is subjective rather than objective.
4. Use familiar words
5. Use positive rather than negative statements (eg. 'These frogs move south in the winter' rather than 'These frogs will not migrate until winter').
6. Use a limited number of qualifying phrases to make the text less complicated (eg. The Bubonic Plague, *which killed more than 10,000 people in Australia*, first hit Sydney in 1900). A better example of phrasing would be 'The Bubonic Plague first hit Sydney in 1900. It has killed more than 10,000 people in Australia since that time.'
7. Text is more readable and far more approachable when it is formatted well. Information is best when it is presented in layers, using headings, sub headings, and standard text size. Additional 'tidbits' of information can be located at the end of a paragraph, in a smaller font size. This indicates that the information is secondary and the reader can choose to read it if they want. This type of sub-text should be kept short and concise and not incorporate more than 1 to 3 sentences.
8. Breaking up text into small neat paragraphs makes it easier for the reader to engage and gives the eyes a rest while reading.
9. Margins should be left justified with standard spacing between words
10. Text and background colour should provide a clear contrast for easy reading (dark against a light background is best).

1.4 AUTHORSHIP

The following report has been prepared by Ceri Kirkendoll (Heritage Consultant) and Kerime Danis (Manager). Kerime has reviewed and endorsed its content. Design content and direction were provided by Peter Tonkin of 3D Projects.

The 2010 *Walsh Bay Pier 2/3 Movable Heritage Catalogue and Significance Assessment* by Godden Mackay Logan Heritage Consultants has provided a significant resource for itemisation and assessment of significance of the collection.

The 2000 *Wharf 2/3 (Pier & Shore Shed) Walsh Bay Precinct Conservation Management Plan* by Tropman & Tropman Architects has also provided valuable background historical information and context for the site and will be consulted for historical input to this Interpretation Plan.

The following resources have provided and will provide background information for the development of Interpretive Themes:

- 1- *Walsh Bay Redevelopment Precinct Interpretation Plan*, Tropman & Tropman Architects, OHM Consultants, HPA Architects and Peddle Thorp and Walker, November 1999.
- 2- *Walsh Bay Redevelopment Precinct: Heritage Interpretation Status Report*, HPA Ltd and Tropman & Tropman Architects, June 2003.
- 3- *Wharf 2/3 (Pier & Shore Shed), Walsh Bay Precinct Conservation Management Plan – Main Report*, Tropman & Tropman Architects, November 2000.
- 4- *Walsh Bay Precinct heritage Technology Conservation Management Plan*, Tropman & Tropman Architects, May 1999.
- 5- *Walsh Bay Precinct Conservation Plan*, Clive Lucas, Stapleton and Partners, December 1998.
- 6- *Hazardous Materials Survey Report, NSW Public Works, Pier 2/3 Walsh Bay – 13 Hickson Road, Sydney NSW*, Noel Arnold & Associates, October 2010.
- 7- *Walsh Bay Redevelopment Conservation Guidelines* (WBRCG), February 1988.
- 8- Heritage inventory sheets for Walsh Bay Precinct and Walsh Bay Precinct, Wharves 2/3 and Shore sheds from NSW Maritime's Section 170 Heritage and Conservation Register

1.5 THE WALSH BAY MOVABLE HERITAGE COLLECTION

The subject collection which embodies a large component of this report is currently being stored at Pier 2/3 following implementation of the approved Interpretation Strategy required as part of the Stage 1 Walsh Bay Master Plan (DA 60/97). The Walsh Bay Precinct is listed on the NSW State Heritage Register (listing No. 00559) and therefore, the precinct, wharves, wharf structures, and movable heritage at the site is part of the State Heritage Register listing, pursuant to Section 170 of the Heritage Act. They are also part of the NSW Maritime Heritage and Conservation Register, yet the elements of the collection are not individually listed on either.

The collection contains a diverse group of items that have been recovered from across the Walsh Bay Precinct during conservation and restoration works. They are primarily industrial artefacts, large assemblages of timber pieces, and metal components. These items were catalogued, photographed, and significance assessed by Godden Mackay Logan in 2010. Out of approximately 124 items, five (5) have been ranked with *Exceptional* significance, sixteen (16) with *High* significance, thirty-three (33) with *Moderate* significance, and the remaining seventy (70) were assessed to have *Low* significance, comprising 56% of the collection. Some of the inherent issues related with these artefacts are size and weight; lack of clear provenance; and number of existing examples in storage. Furthermore, it seems that many of the visually interesting or substantially intact items have already been pulled from the collection and placed on display in various areas across the Precinct (refer to section 1.6 for examples).

Items from this part of the collection include trolleys, scale, wool presses, bollards, jib cranes, pieces of timber pile, window frames, cargo doors, metal plates and angle sections, ladders, pendant lamps, electrical switches, pieces of carved sandstone, and signage. It represents a bulky collection with varying degrees of significance and no clearly defined plan for management, display, or discarding.

The Walsh Bay Movable Heritage Collection is also comprised of a shipping container that holds multiple boxes of accumulated artefacts taken mostly from the nearby Towns Place archaeological excavation. There are approximately 100 archive boxes filled with ceramic, glass, metal, and organic materials. In the past they were meticulously catalogued by Austral Archaeology and a 2005 report *Archaeological Monitoring Programme at Towns Place* by the same summarises the information about this collection. In total, the original assemblage consisted of 5,884 fragments and weighed nearly 595 kgs.¹ There has been some conservation treatment to the better samples from the collection but a full treatment report has not been provided at this time. There is an additional concern pertaining to the Towns Place artefacts in that many items have been used for display at the Towns Place site and a record or list of these displayed items have not surfaced in the research for this Use & Interpretation Plan.

While this part of the collection was taken from Towns Place as part of the greater Walsh Bay Precinct, its connections to the wharf area, and Pier 2/3 in particular, are questionable. The site is predominantly associated with commercial activity, however many of the items found there are usually associated with domestic activity. It was determined by Austral Archaeology that there was likely domestic activity very early on but, probably also contains imported fill from the era of Robert Townsend (whom Towns Place is named after) when he was extending his landing areas.

¹ Austral Archaeology Pty Ltd, *Towns Place Archaeological Monitoring Project*, 2005.



Figure 1: Images taken of the inside of the shipping container. Upper left – boxes at right are archive boxes filled with artefacts from Towns Place, labelled with location, box number, and area of excavation; Upper right – the floor of the shipping container illustrating the ad hoc inclusion of other artefacts and items not directly related to Towns Place or the Walsh Bay Movable Heritage Collection; Left – approximately 65 archive boxes, labelled 'Old Downshire Street'.

1.6 EXISTING INTERPRETATION

At present the entire Walsh Bay Wharves Precinct (with the exception of Pier 2/3 and Jetty 10) contains a generous amount of interpretive media and display. This is mostly in the form of in-situ display of industrial artefacts or the same items that have been relocated to nearby areas (lobbies, restaurants, shore shed drive through entrances, etc). Although they may appear out of context—particularly within contemporary surroundings—they are successful at providing a consistency to the look and feel of the Wharves Precinct and in engaging and reminding the audience that this was once very much a site of maritime industry.

It also appears that many large artefacts (overhead travelling cranes, lifts, bale chutes, gantries, winches, etc) that are associated with the site and have been removed from various wharf structures, are currently being used for display and interpretation in their fully

assembled context. Most of these have associated signage and diagrams that explain how the items were used and where they were originally located. A cursory review of the existing machinery/artefacts displayed across the site against the items currently housed in Pier 2/3 suggests that in previous years, the better examples of artefacts or those items which have a higher degree of aesthetic interest have already been utilised for interpretation throughout the site. There are exceptions to this, but in general this seems to be the case. It should also be noted that the Precinct, as a whole, has a more than ample display of industrial artefacts and, although it presents some additional opportunities for display, runs the risk of being over-saturated with them.

Existing interpretive signage across the precinct appears to be relatively consistent in design and content and generally satisfies the principles raised in section 1.3 Methodology. There are a few instances of older/early interpretive signage (see Figure 8) that are not current with emerging trends in historic interpretation yet they suit the overall history of the site and illustrate a progression in works undertaken within the Precinct over the past decades.

INTERPRETATION NODE – Breezeway, Pier 2/3



Figure 2: Approved interpretation node on north side of breezeway within Pier 2/3. Artefact window on western end has further display items and images (ie Boxing posters from Towns Place archaeological collection) behind and out of direct sight of the artefacts immediately on display. Dozens of small artefacts from the Movable Heritage Collection are on display here since 2005/06.

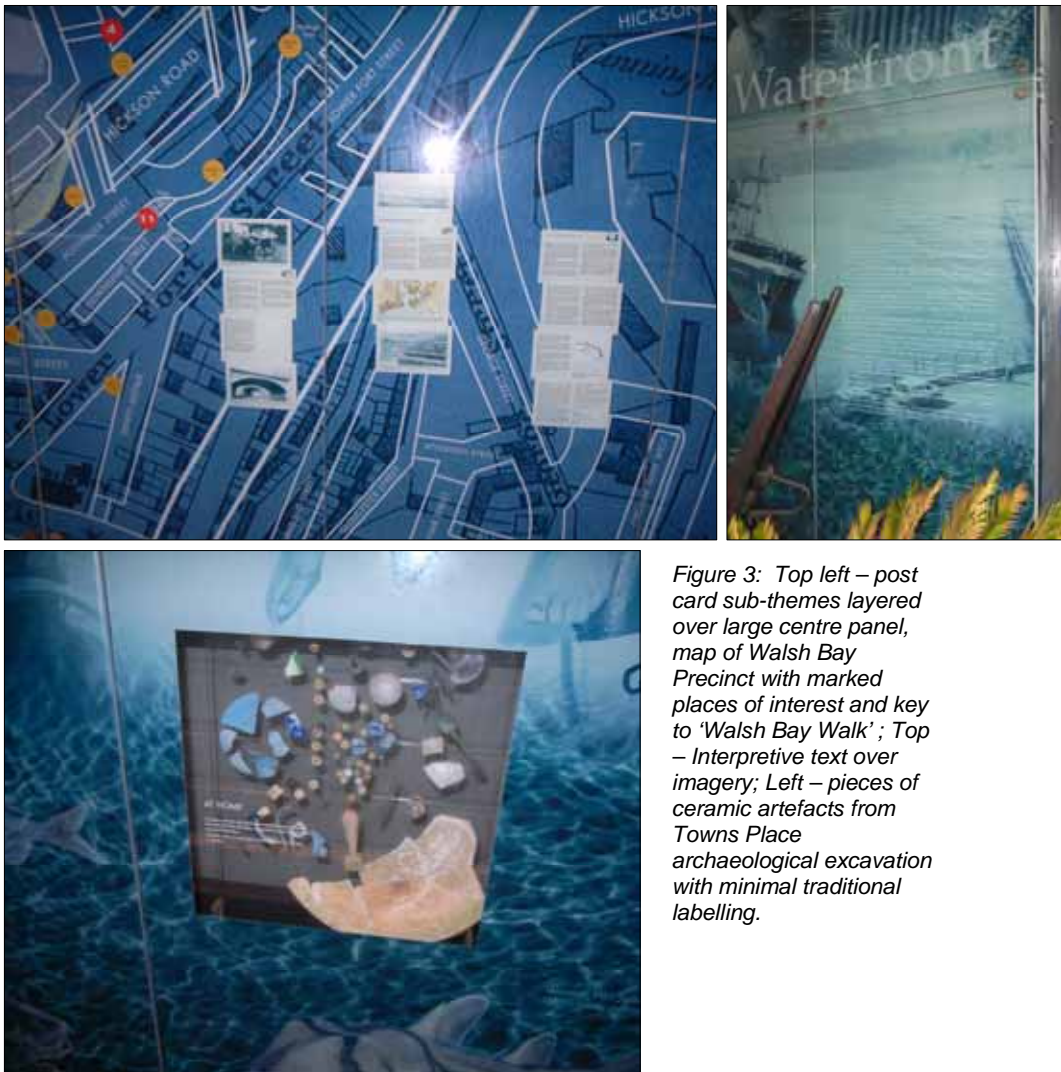


Figure 3: Top left – post card sub-themes layered over large centre panel, map of Walsh Bay Precinct with marked places of interest and key to 'Walsh Bay Walk'; Top – Interpretive text over imagery; Left – pieces of ceramic artefacts from Towns Place archaeological excavation with minimal traditional labelling.

The interpretation node located within the breezeway of Pier 2/3 was installed more recently to satisfy Condition 20 of the Walsh Bay Master Plan approval (DA 60/97, Department of Urban Affairs & Planning, 20 August 1998) that required an interpretation centre to be provided at Pier 2/3. It presents as a large graphic feature with in-built display boxes that house artefacts recovered within the Precinct, specifically they appear to be items from the nearby Towns Place archaeological excavation. State themes interpreted here include Commerce, Industry, Fishing, Transport, Technology, Labour, and Persons. It includes a variety of stories that relate the history of the site and its wider context from its 18th century beginnings to the near present. A story about 'Chewy', painter for the Maritime Services Board NSW, who was responsible for painting Pier 2/3 in the late 1980s demonstrates the breadth of history interpreted in this location.

This interpretation node stands apart from other signage and interpretive display in the Walsh Bay Precinct as a distinct hub or focal point for information about the site. It is also the only

place where small artefacts are displayed with interpretive content, design and composition in mind. There is a good representative collection of domestic artefacts on display here, including pottery shards, buttons, marbles, bottle stoppers, and teaspoons. One display box is dedicated to metal items found during excavations of 'several sites' in Walsh Bay, with no defined provenance. Here, multitudinous metal items are displayed including manufactured metal items and non-specific off cuts. They appear to have been treated by conservators and stabilised for display and general long term preservation.

In addition, there are artefact display boxes that contain a selection of colonial clay pipes (largely bowls and stems) and remnant maritime tools, with emphasis on early whaling that took place around the wharves before they were re-built in the early 20th century. The pipes represent a good sampling of designs and makers marks, expressing the ubiquitous habit of smoking in the colony amongst wharfies and other people associated with maritime activity in the area.

It is considered that this area successfully promotes the history of the Walsh Bay Precinct with attention-grabbing graphics and an effective selection of local artefacts to layer the interpretation and provides real tangible cultural material to illustrate the lives of the people who lived and worked here. Notwithstanding, a key issue with the interpretation here is that it seems somewhat out of context to be displayed here, even though there is a legitimate historical connection between the wharves and nearby sites of archaeological excavation. It has been established that the larger artefact collection *may* be associated with wharf activities and *may* also be stratigraphically associated with demolition and redevelopment of the Walsh Bay Precinct in the form of infill deposits. However, it might also be that the items were found within imported fill, such as that Robert Towns was using to extend his landing areas to the southwest.² In this case, there is no true historical connection and Pier 2/3 is reduced to being a 'catch all' or repository for homeless artefacts.

IDENTIFICATION & WAY FINDING SIGNS at pier entries



Figure 4: Pier identification/ way finding signs at the entrance of each

² Towns Place Archaeological Monitoring Project, Austral Archaeology Pty Ltd, 2005, p 50.

A series of aluminium signs in the form of pier markers are found at the entrance to individual piers. They are consistent visually and graphically with most other interpretive signage throughout the precinct in their design and branding. They work well because of their simplicity and inclusion of interesting images and because they have the appeal of vintage signage. It is important that the greater Precinct has a unified appearance in terms of interpretive and way finding signs so that there is balance and structure to the ways in which visitors are guided through and around the Precinct. Way finding signs should be immediately recognisable as such whether visiting pier 2/3 or 6/7, and so on.

INTERPRETATION SIGNS

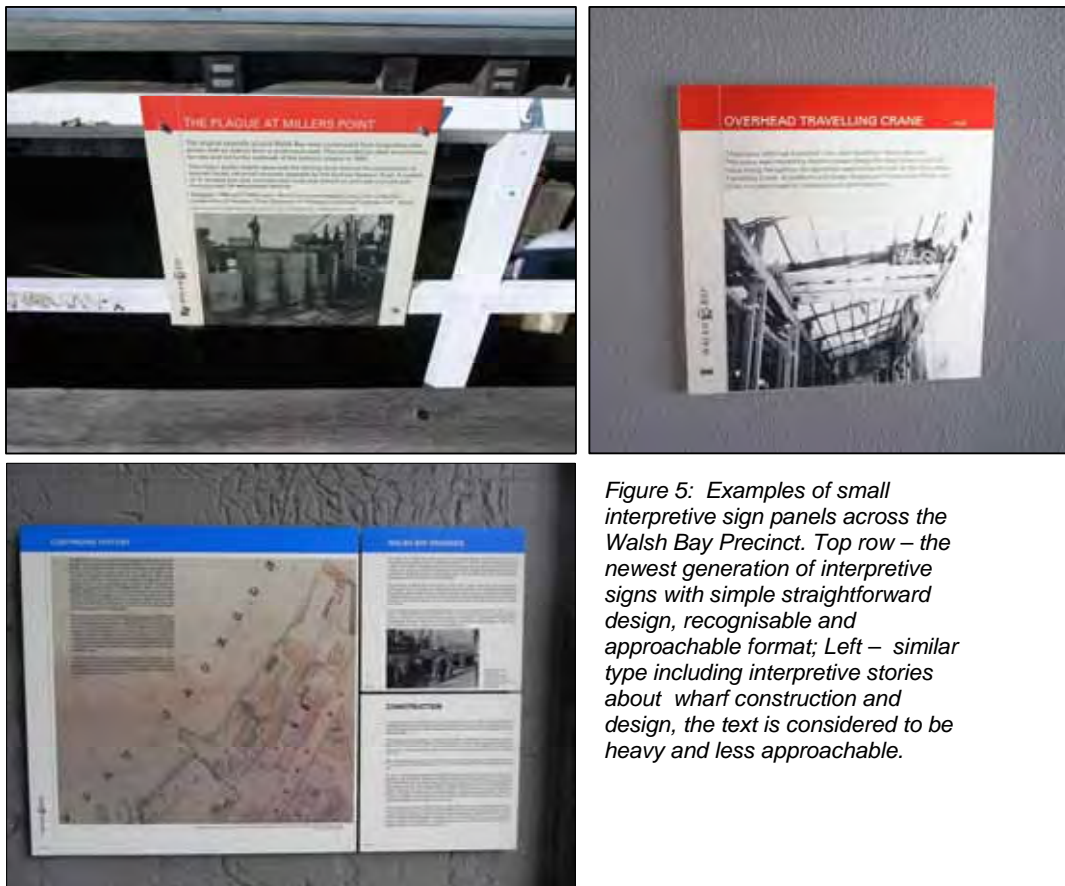


Figure 5: Examples of small interpretive sign panels across the Walsh Bay Precinct. Top row – the newest generation of interpretive signs with simple straightforward design, recognisable and approachable format; Left – similar type including interpretive stories about wharf construction and design, the text is considered to be heavy and less approachable.

The format and design of these sign panels are mostly desirable and effective. Strong simple graphics accompanied by a snippet of text is the key to their success. In areas like the interpretation node, where the information is concentrated, it is reasonable that the average interested visitor will spend more time than usual to pause, read, and ingest the information. Where these signs are scattered, or isolated, it should be considered that less time will be spent reading interpretive text as most people are hurrying from one place to another. Heavy blocks of text and long lines of text are not ideal.

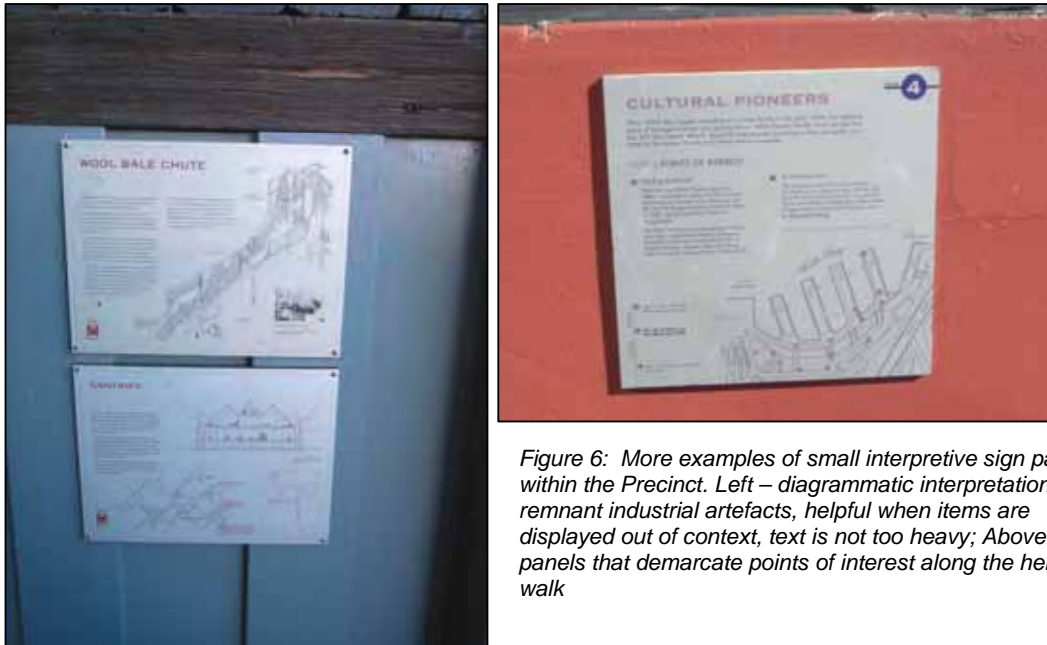


Figure 6: More examples of small interpretive sign panels within the Precinct. Left – diagrammatic interpretation of remnant industrial artefacts, helpful when items are displayed out of context, text is not too heavy; Above – sign panels that demarcate points of interest along the heritage walk

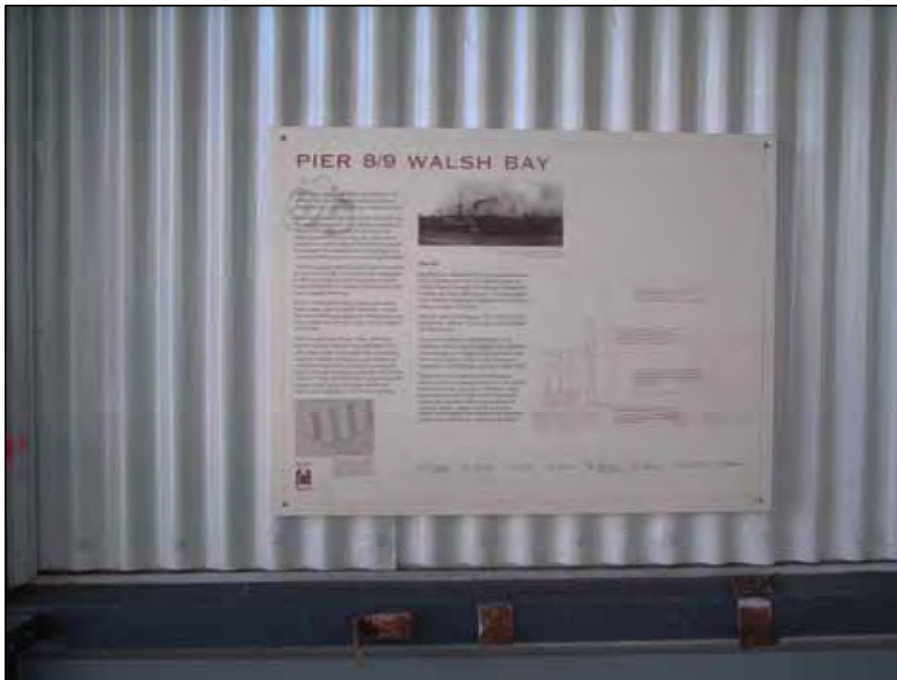


Figure 7: Example of earlier generation interpretation panel as part of group shown in Figure 5, left. They lack the recognisable bold primary colours that indicate to the visitor that they will find historic interpretation but they achieve many principals of good interpretation: layering of text through headings, sub-titles and body text, information is broken up into readable paragraphs with intermittent graphics.



Figure 8: Top – earlier interpretive signs that mostly appear in the public areas of the shoreshed stairwells. These tell the story of Burns Philp, a lessee of Pier 6/7 in the early 20th century; Bottom – interpretive sign panels of unknown time period that were possibly designed to mimic the early ones above. They are different to the Figure 5 sign type but they are graphically compelling and have playful configurations.

In total there are approximately 30-50 signage panels across the public access areas of the Walsh Bay Precinct. With the exception of the interpretation node at Pier 2/3, they are mostly metal signs of digitally printed anodised aluminium. Interpretive text includes a wide variety of themes and stories, most often relating to the individual pier with which they are associated. The largest component are dedicated to the interpretation of in situ machinery and industrial artefacts removed from the sheds during conservation and restoration works. It is considered that these are vital to the interpretation of the site and the function of individual items that may be presently viewed out of their natural context.

SCULPTURE – Other



Figure 9: Examples of artefacts used across the site as sculpture, as art, and as interpretation. Top left – timber artefacts have been reconfigured by an artist in order to mediate between the old and the new, located inside the reconstructed shed at Pier 6/7; Top right – display of a mooring pile called a 'dolphin' used playfully here as sculpture; Left – a nearly intact set of two-wheeled trolleys displayed in the lobby of Walsh Bay Apartments. Alone, one is not as interesting. A group of them is visually intriguing and demands your attention.

A successful component of the interpretation at Walsh Bay is the array of art and sculpture provided by remnant artefacts, machinery, tools, and other objects. Its contemporary commercial and residential spaces create an excellent backdrop or setting to display these items of industry. As seen above in Figure 9, a set of eighty year old two-wheeled trolleys are nicely juxtaposed with the contemporary interior design, forcing the visitor to notice them and recognise the historical importance of the site. Other artefacts have similar display intent, but they are given a functional use.



Figure 10: Examples of Walsh Bay Precinct artefact collection that are currently being used to interpret the history of the site, but also provide a functional use.



Figure 11: A large artefact item on display in a lobby of the Walsh Bay Apartments. Visible from the exterior but access is limited to private residents. Close inspection and interaction is significant to this display. Injury, particularly for children, is a risk. Limited access makes this successful on both accounts.



Figure 12: In situ display of artefacts. Top left – bale chute at Pier 8/9; Top right – goods lift relocated to shore shed entrance; Left – cranes displayed to emphasise function, the fact that they are out of context from their original setting is not obvious.

1.7 APPROACH

The approach must represent a collaboration between stakeholders and address the client's needs, the statutory directives conveyed upon the site, the welfare and long term preservation of the existing collection, the inherent constraints and opportunities of the site, existing interpretation at Walsh Bay, and the needs and wishes of the lessee of Pier 2/3, Arts NSW.

The previous summary of existing interpretation at Walsh Bay has established that the site is already widely and generously interpreted with signage, small artefact display, large in situ

industrial artefact display, and artwork and sculptural elements created from artefact remnants and machinery. Preliminary discussions with Arts NSW have also pointed to a desire for open spaces that are not 'clogged' with an abundance of artefacts that appear redundant within the context of the greater Walsh Bay Precinct. It is also understood that the client, NSW Maritime, wishes to comply with the conditions for development that have been associated with Pier 2/3 and the greater Walsh Bay Precinct since negotiations began to redevelop it more than two decades ago. This includes the protection and safekeeping of those items within the collection that are important, but not shortlisted for display due to physical or monetary limitations.

With this in mind, the approach will be one that is reasonably minimalistic, ensuring that the space is not dominated or overpowered by artefact display. The quality of the interpretation is a key issue and it has been identified that there is potential for an over saturation of interpretation and display items and the appearance of Pier 2/3 shed existing as a 'catch all' repository for items of material culture related to the history of the wider Precinct.

Therefore the suggested strategy for interpretation of the site is one that is condensed (as much as possible) and focuses on the quality of the interpretive display. Dramatic content, compelling stories and display attributes will, in turn, reinforce the use of the space by the arts community so that the two are not mutually exclusive of one another. It will be important to reflect the style and design of existing interpretive content throughout the Precinct, yet define it from the rest by employing new stories and intriguing interpretive concepts that have not already been done at Walsh Bay. Furthermore, a careful and considered approach must be given to the collection as a whole. Recommendations for the items that will not be considered for display must be practical, cost-effective, analytical, and reasoned. The section on Collection Management (section 10.0) will cover this application of the strategy ('Use') in more detail.

2.0 CONSTRAINTS AND OPPORTUNITIES

Each site of historic importance presents its own distinct parameters for a successful interpretive program. In order to formulate the best approach to an Interpretation Plan, it is beneficial to first analyse the challenges and conveniences associated with a site. The opportunities should be exploited as far as possible and this is most achievable by establishing and considering them throughout the process. Conversely, the challenges or constraints should be outlined and incorporated into the structure of the plan in order to prevent problems or failures after the interpretation is implemented and installed.

The following analysis has been extracted from what is currently known and understood about the subject site and the briefing for this project.

Constraints

- Interpretation of the site must suit the physical, spatial, and design/branding needs of the new tenant
- Numerous large industrial artefacts (ranked with Moderate, High, and Exceptional significance) need to be displayed in accordance with statutory regulation and governing CMP policy which require large display areas and some measure of conservation in order to preserve them and, in some cases, ensure that they are partly functional.
- Wharf 2/3 is part of a busy area with commercial and tourism appeal and display of large industrial artefacts must consider public safety, OH&S (ie trip hazards), and maintain sufficient space for service vehicles.
- New interpretive displays combined with existing significant interpretation and display of artefacts throughout the wider Walsh Bay Precinct could eventuate in an over saturation of industrial interpretation, culminating in a general lack of interest.
- Many industrial artefacts to be displayed have an unknown origin/provenance.
- Artefacts [for display] from Towns Place do not have a real and viable historical link to the history of Walsh Bay and may seem out of context, interpreted at Pier 2/3.

Opportunities

- Pier 2/3 within its context of the Walsh Bay Precinct has an abundance of interpretive support through extant structures, conservation measures, locale, and contextual understanding of the place.
- Extensive floor space within the shed and around its perimeter
- Opportunities exist, with some negotiation, to locate display artefacts in other areas throughout the precinct (eg cafes, apartment lobbies, Jetty 10, etc)

3.0 AUDIENCE

In order to design appropriate interpretation methods and devices, it is necessary to understand the likely audience who will encounter the information.

The key audience groups and users for Pier 2/3 at Walsh Bay have been identified as the following:

Communities NSW (formerly Arts NSW)	
Activities	<ul style="list-style-type: none"> • Staff who will be working in the main building (shed pier 2/3) • Staff eating lunch outside during work breaks

	<ul style="list-style-type: none"> • Artists/performers and family attending performances and exhibitions in the main building (shed pier 2/3) • Artists/performers and family congregating outside before/after performances • Visitors who are interested in the arts and for whom Pier 2/3 is their destination
Visitors to commercial spaces	
Activities	<ul style="list-style-type: none"> • Regular and occasional clientele to the restaurants and cafes within the Precinct
Residents within WB Precinct	
Activities	<ul style="list-style-type: none"> • Entering and exiting the Precinct daily • Eating dinner at the cafes and restaurants in the Precinct • Wandering through the interior and exterior spaces of the Precinct with friends and guests
Tourists	
Activities	<ul style="list-style-type: none"> • Crossing the piers to move from one location to the other • Exploring the wharves and enjoying the views of the harbour and the city • Having lunch/coffee at the cafe(s) and restaurants within the complex • Visiting friends/family who are residents within the WB Precinct
Local workers	
Activities	<ul style="list-style-type: none"> • Crossing the piers to move from one location to the other • Eating lunch in the sunshine on nice days (any of the public areas of the piers) • Sitting at Jetty 10 having lunch and relaxing

The large amount of expected visitors in combination with the associated broad demographic of people to be found there provides an outstanding opportunity to disseminate information about the historical importance of the site to a wide and international audience. It will not be limited to any particular age, nationality, educational background, religion, or socio-economic group.

4.0 HISTORICAL SUMMARY

The following is a chronological summary of the historical development of the site as provided in the Conservation Management Plan by Tropman Tropman prepared in 2000.

4.1 CHRONOLOGY

- 1900 *Outbreak of bubonic plague.*
- 1901 *Creation of Sydney Harbour Trust and resumption of wharf property.*
- 1902 *Beginning of reconstruction work in Darling Harbour.*
- 1903 *Restoration of existing wharfage in immediate vicinity.*
- 1906 *Policy for Walsh Bay complex devised.*
- 1910 *Beginning of sea wall construction and of Hickson Road. Pier 8/9 begun. Beginning of work on Pier 1.*
- 1912 *Pier 2/3 construction begun.*
- 1913 *Hickson Road in rapid progress. Piers 4/5 and 6/7 begun. Pottinger Street deviation commenced.*
- 1914 *Work on Pier 2/3 recommenced after delay.*
- 1915 *Length of Pier 2/3 jetty to be extended.*
- 1917 *Revision of plans for Pier 2/3 due to material shortages. Further cessation of work on Pier.*
- 1918 *Work resumed on Pier 2/3. Planning and beginning of bridge over Hickson Road.*
- 1919 *Jetty sheds of Pier 2/3 to be timber.*
- 1920 *Final extension of Pier jetty.*
- 1921 *Overhead bridge changed to a timber structure.*
- 1922 *Completion of Pier 2/3.*
- 1923 *Completion of overhead bridges. Adelaide Steamship Company using Pier 2/3. Automatic fire alarm system.*
- 1925 *Pier 2/3 declared 'open berth'.*
- 1936 *Maritime Services Board.*
- 1955 *Timber overhead bridge replaced in steel and concrete*
- 1974 *Pier 2/3 piles renewed.*
- 1984 *Pier 2 restricted to small commercial vessels.*
- 1986 *Beginning of new plans for Walsh Bay.*

5.0 STATEMENT OF SIGNIFICANCE

The following Statement of Significance has been quoted from the 2000 Conservation Management Plan for Wharf 2/3 by Tropman & Tropman Architects.

While it is significant in its own right, Wharf 2/3's primary significance is concerned with it being a part of the Walsh Bay complex.

Wharf 2/3 is of State significance in the context of the Walsh Bay wharfage precinct, on the following counts:

7.2.1 On the site of wharf and maritime activity since the 1820's, Wharf 2/3 forms part of a decisive attempt to remodel Sydney's port facilities. It is thus a part of the historical development of Walsh Bay and of Sydney Harbour generally.

7.2.2 Wharf 2/3 forms part of a deliberate design plan for wharf construction. Its regularity, symmetry and clarity of design reveal aesthetic features of a high order. This is accentuated by the Wharf's place in the overall design of Walsh Bay.

7.2.3 The site, individually and as part of the Walsh Bay complex, has a strong architectural presence that contributes to the overall urban landscape of the southern shore of Port Jackson. It provides a prominent and historically rich landmark and contributes to create significant views and vistas. These include the existing vistas through the piling grid and building.

7.2.4 Wharf 2/3 constitutes a good example of a Federation Period 1912-1922, Edwardian Maritime Engineering style of architecture.

7.2.5 Pier 2/3 contains special design features such as exceptionally long timber piles (due to particularly deep water) and the two-level apron.

7.2.6 The southern (Hickson Road) brick and stone shore shed facade has a strong architectural presence and contributes to the streetscape and overall character of the area. It also contributes to create significant views and vistas from both street level and overhead bridges. In addition, the Walsh Bay shore shed facades to Hickson Road frontage, unusual in the Sydney Harbour Trust wharves, constitute today, after the demolition of berths 2 to 6 at Darling Harbour, the largest extant group.

7.2.7 The Wharf, and its predecessors, back to the 1830's, were a place for employment in an area and were connected with the development of

upper and working class housing. This process continued with the Harbour Trust's association with Millers Point development. It is held in high local and heritage esteem.

7.2.8 Wharf 2/3 provides powerful evidence of wharf construction of its time, especially in its use of harbour piles. It exhibits the carefully contrived arrangement for the cooperation of transport and storage.

7.2.9 The site retains a number of associated industrial items and artefacts that contribute to illustrate former uses, operations and technologies at the site.

7.2.10 The whole site has archaeological potential to reveal new information about former structures, operations and life styles.

6.0 CONSERVATION POLICY FOR INTERPRETATION

The Conservation Management Plan for Wharf 2/3 (Pier & Shore Shed) at Walsh Bay Precinct (2000) outlines certain measures in order to safeguard the history and cultural significance of the site, they are as follows:

9.2.4 Interpretation

9.2.4.1 Informative and interpretive displays should be considered on the grounds to assist public understanding of the history, development and significance of the subject site and Walsh Bay Precinct.

These interpretive techniques are to be well managed in a cohesive manner and to be integrated into the entire Walsh Bay Precinct Interpretation Plan.

9.4 Industrial archaeology

9.4.1 Significant associated industrial items and artefacts should be conserved.

Major industrial items and artefacts as identified in the Walsh Bay Precinct Heritage Technology Conservation Management Plan, November 1999, by Tropman & Tropman Architects should be retained in-situ and conserved. These include the following:

- Timber slatted Dead houses (items 52 & 55), originally for storing bonded goods, including any associated items ie. Sliding doors, hardware, timber shelves, etc,*
- Bag Chute (item 89 – 53) with door opening to east wall onto the apron,*

- *Gantry rail to first floor jetty shed –east- facade, mounted on large riveted brackets fixed to the outer storey posts, and the gantry rail set into the apron,*

9.4.2 *There is an opportunity to reconstruct the travelling gantries (Item 54, now removed) originally used to move cargo along the apron, as part of the Pier 2/3 redevelopment.*

9.4.3 *Suitable examples of smaller industrial items should be retained wherever possible and*

9.4.4 *Any significant industrial archaeology to be retained in-situ should be fully incorporated into the design proposal, influencing the layout of the adaptive use of the building and the design of the new fittings. See also 'New Uses'*

The design of developments in the vicinity of machinery should also take into account the spatial requirements of the operation of the machinery, the possible need for the installation of additional safety features and the need for viewing access

The design should also retain an appropriate visual setting for these items.

9.5 *New uses*

9.5.2 *Interpretation of the original use and industrial context should be clearly evident with the new use.*

9.7 *Conservation procedures at the site*

9.7.7 *ARCHAEOLOGICAL FINDS*

Assemble, catalogue and safely house all archaeological finds that have been or are in the future removed from the site. Store in the one place, for assessment and distributed to repositories elsewhere for particular research or for interpretive reasons or reinstated as part of interpretation programs. Offer and duly deliver finds to repository nominated by the owner, properly identified together with all supporting information.

7.0 THEMES FOR INTERPRETATION

The central theme of Pier 2/3 is its function as part of Walsh Bay and relating to all of the activities therein. A dominate theme lies in its architectural design/technology and presence as part of the harbour waterscape. The following New South Wales historical themes have been identified as having relevance to Pier 2/3 (2000 CMP, Tropman & Tropman). They were extracted from the 1999 *Walsh Bay Redevelopment Precinct Interpretation Plan* (Tropman & Tropman).

7.1 ARCHITECTURE

- A notable example of jetty wharf design of its time.

7.2 COMMERCE

- An element in shipping and cargo storage, directly concerned with Sydney's import-export trade.

7.3 ENGINEERING

- A prime component of one of the State's most comprehensive wharfage plans, involving special techniques in wharf construction.

7.4 GOVERNMENT ADMINISTRATION

- Created by a statutory corporation, the Harbour Trust, the Wharf represented a major development in government supervision of public facilities.

7.5 HOUSING

- The Wharf was connected with both upper and working class housing in the vicinity.

7.6 LABOUR

- The Wharf provided significant employment for both stevedores and seamen.

7.7 PASTORALISM

- The storage and export of wool was a major feature of Wharf 2/3 and its shore sheds.

7.8 PERSONS

- Association with a long line of merchants and ship owners and with the major Harbour Trust figures- R. Hickson, H. Walsh, C. Adams.

7.9 TECHNOLOGY

- The Wharf exhibits major advances in jetty wharf technology.

7.10 TRANSPORT

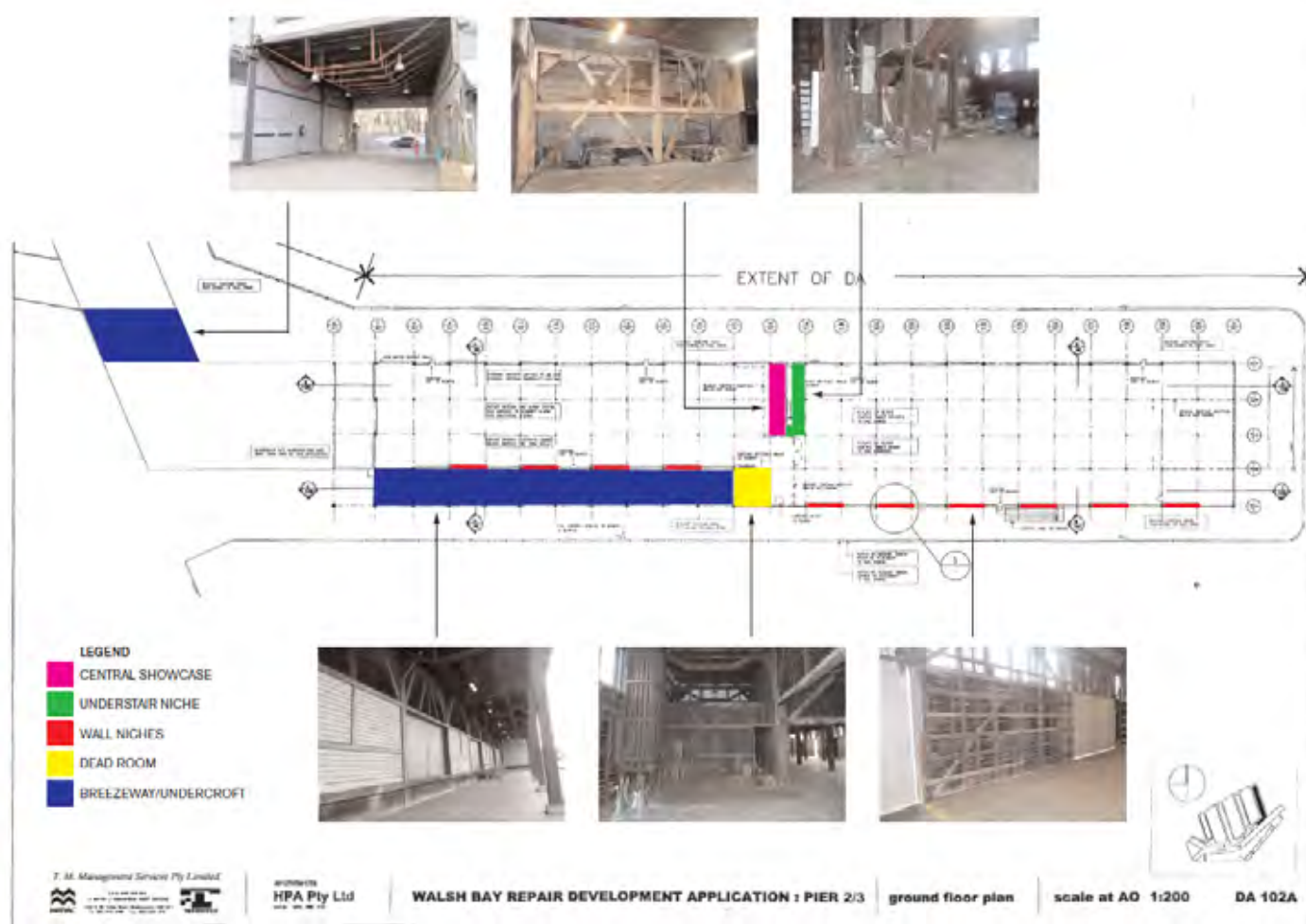
- The Wharf was a component of the Walsh Bay complex, a major item of Sydney's goods transport system.

7.11 URBAN DESIGN

- The Walsh Bay project was a major feature of Sydney's urban design in the large reconstruction process of the early twentieth century.

8.0 INTERPRETATION PLAN

The following concept plan, prepared by 3D Projects, recommends locations for the interpretation of items identified in Appendix A.



WALSH BAY PIER 2/3 GROUND FLOOR PLAN INDICATING
POTENTIAL OBJECT DISPLAY AREAS - 3D PROJECTS

The following are preliminary conceptual display options, prepared by 3D Projects.



CENTRAL SHOWCASE DISPLAY



WALL NICHE DISPLAY



UNDER STAIR NICHE DISPLAY

9.0 INTERPRETATION GUIDELINES

9.1 IMPLEMENTATION AND MANAGEMENT RECOMMENDATIONS

9.1.1 CONSULTATION

The preparation of an interpretation proposal is to involve consultation with relevant stakeholders such as the representative of Communities NSW, NSW Maritime and the Office of Environment and Heritage, and other statutory or non-statutory authorities as relevant such as National Trust of Australia (NSW), community members (local residents) as part of a community consultation if required.

9.1.2 ARCHAEOLOGY

The artefacts of the Towns Place and other Walsh Bay Precinct archaeological test excavations that are currently stored within a container inside Pier 2/3, in particular those that have already been treated, should be incorporated within the interpretive actions of Pier 2/3 through appropriate methods.

9.1.3 IMPLEMENTATION: DISPLAY PANELS

Undertake detailed graphic designs and identify materials for the panels (specific locations yet to be finalised). Ensure copyright clearance is obtained in writing for all photographic maps (if used).

9.1.4 PRACTICAL

Interpretation is to be practical, having regard to the purpose, character and function of the spaces or places in which they will exist. The intention of interpretation is to convey the significant cultural and natural values of a place; the 'practical' interpretation will be able to demonstrate the successful transmission of a significant value associated with the place.

9.1.5 MAINTENANCE

Interpretation is to have regard to future maintenance through the following measures:

- Be robust in design, construction and materials having regard to effects of people, animals, weather and vehicles that may enter the site.
- Have parts, fittings and materials that are easily and cost effectively repairable and/or replaceable in the event of damage.
- Be of high quality physically and conceptually consistent with the other existing interpretive media within the Walsh Bay Precinct.

9.1.6 DESIGN

Proposals for Interpretive Actions should use materials, forms, text and images, to best convey the theme so that a message (or story) may be experienced on a number of levels. A

didactic message is an obvious form of interpretation where the message is clear. Other ways of telling a story may be less apparent, revealing a story on an emotional level where the message is perceived or discovered. The latter type of interpretive message may require more than one visit and to unfold over time.

Designers are encouraged to use various methods to affect a variety of the human senses such as sounds, textures and smells (as appropriate), and not rely solely on visual materials and methods.

10.0 COLLECTION MANAGEMENT

10.1 DISPLAY

A list of individual moveable collection and artefacts has been compiled as suggested display items within Pier 2/3 and can be found in Appendix A. They were shortlisted due to their significance and as part of the recommended management outlined in the Godden Mackay Logan *Walsh Bay Pier 2/3 Movable Heritage Catalogue and Significance Assessment*. The recommendation stating that all items of *Exceptional* or *High* significance should be retained and interpreted within the site. Items of *Moderate* significance should be retained and interpreted, where possible, unless there is justification for them being discarded (eg multiple examples of a type). Management of items that were ranked with *Low* significance should allow for one example of each type to be retained and interpreted or put into further storage so that the collection as a whole is preserved.

Items selected have also been chosen for visual or interpretive appeal. There are some items recommended for display that are ranked with *Low* significance, yet will enhance the compelling nature of the displays or serve to create a layered effect with the interpretive devices. Successful layering of interpretive devices presents a rich and dynamic history through straightforward didactic displays and signage as well as elements that transfer a message through the senses or emotion. The latter are generally interpretive devices that may not be recognisable as such and sometimes appeal to the subconscious.

A selection of metal artefacts from the shipping container have been chosen due to the fact that they have recently undergone conservation treatment which will allow them to remain chemically stable and should not create problems [cross contamination] for other items on display if they are displayed with other materials. It is not recommended that they are displayed with organic materials such as leather or bone.

10.1.1 CONSERVATION RECOMMENDATIONS FOR DISPLAY ITEMS

- All items selected for final display should be recorded in a Display List which includes catalogue numbers, provenance, description, and record shots [photographs]. Copies of the list should be retained with the display cases, if possible and with the majority of the collection in storage.
- Items should not be displayed which have not been treated and have the potential to damage other items through chemical reaction.
- Items that are physically or chemically unstable should generally not be considered for display.
- Large metal artefacts should be protected from inclement weather as far as possible. Exposure to salty sea air is manageable but may require advice from a professional conservator. Simple wax finishes on metal items can protect them and abate the process of corrosion.
- A minimum of a light surface clean will be necessary for all industrial artefacts displayed in the open [without display cases]

10.2 STORAGE

A list of artefacts has been compiled as items that are recommended for retention and further storage and can be found in Appendix B. They were considered significant or important to the collection and it is recommended that they be kept together as an identifiable group with appropriate tagging or labelling.

Recommendations for potential storage locations can also be found in Appendix B.

10.3 REUSE & RECYCLE

Considering that the collection contains more than 50% of items ranked with *Low* significance, it is reasonable that a portion of them are culled from the collection.

With the notion that it is preferable to reuse or recycle materials from the collection, a list has been compiled of items that may have value to artists or other professionals that regularly use materials such as timber, glass, or stone. Appendix C contains information about the items chosen for reuse and recycling with recommendations for relocating them.

10.4 DISPOSAL

Disposal of collection items has been carefully considered against the following criteria:

- Significance
- Importance to the collection
- Conservation needs/stability
- Size (considered for long term storage costs)
- Research potential

- Number of existing examples within the collection
- Provenance
- If retention is cost effective

It is understood that disposal is not the preferred method for culling the collection and that this does not imply that the items are without value. However, some measures to reduce the collection are considered necessary from a realistic and logical viewpoint. A collection that is too large risks being separated between two or more repositories and risks being damaged and not cared for adequately for its long term preservation. A list of items that are suggested for disposal can be found in Appendix D.

11.0 CONCLUSION AND RECOMMENDATIONS

It is recommended that:

1. NSW Maritime and the Heritage Council accepts this Use & Interpretation Strategy/Plan as a framework for future development of interpretation at Pier 2/3 in accordance with the recommended Location Plan.
2. That detailed designs of the interpretive panels meet the intent of this Use & Interpretation Strategy/Plan and the suggested historic themes.

Next Steps following acceptance of this framework by the Heritage Council:

1. Prepare a detailed Interpretation Plan to guide the design of site specific interpretive elements.
2. Implement approved detailed designs - including acquiring additional images (if any), permission to publish images from copyright holders, high resolution of images - and install manufactured signage, 3D sculpture (if applicable), and integrate landscape furniture with the proposed interpretation.
3. Following acceptance of the interpretation framework, NSW Maritime would remove those items identified for storage, reuse & recycling and disposal from the pier in accordance with recommendations detailed in this report.

12.0 APPENDIX A: OBJECT DISPLAY PROPOSAL BY 3D PROJECTS

12 thematic categories are proposed which generally include most objects of moderate to exceptional significance, plus a few of low significance. These categories reflect aspects of the construction of the Walsh Bay piers and the cargo loading and unloading activities performed at Walsh Bay.

It is proposed that these objects are permanently displayed in their thematic clusters in any or all of the following display areas together with brief interpretive information panels. It is recommended that the Pier 2/3 building tenant liaise with their architects and indicate how and which of the proposed display area options could best be incorporated into their fit-out design before required display areas and objects are finalised.

POTENTIAL DISPLAY LOCATIONS

- Central Showcase - large enclosed space south of central stair to be glass-faced for secure object displays.
- Understair Niche - enclosed spaces north and east of central stair could either be glass-faced for secure object display or retained as open niches for large object display.
- Wall Niches - 10 wall niches could either be glass-faced for small object displays or have larger objects fixed to outer faces (need to ensure sliding doors don't interfere with objects therein).
- Dead Room - enclosed room for secure, dramatically lit displays of small-medium sized objects visible through batten walls.
- Breezeway/Undercroft - covered areas for display of large robust items such as overhead crane.

PROPOSED OBJECT CATEGORIES

1 Climbing (central showcase, wall niche)

- 5 ladders (32, 43, 108, 116)
- 1 stair (96)

2 Containing (central showcase, dead room)

- 2 rain heads (42)
- 1 timber crate (59)

3 Powering (central showcase, dead room)

- 2 power boxes (40)
- ship's electrical supply (52)

4 Floating (central showcase, wall niche, dead room)

- 2 life preservers (83, uncat)

5 Sliding (central showcase, wall niche, dead room)

- bale chute components (24, 74)

6 Securing (central showcase, dead room)

- bollard (17)

7 Lifting (central showcase, understair niches, breezeway)

- jib crane items (19)
- cat head beam (21)
- crane components (27, 31, 47, 85)
- pulleys (35, 78)
- crane post (88)
- goods hoist (97, 98)
- travelling crane (102) - (breezeway)
- hydraulic ram (98, 121)
- trap doors (105)

8 Pressing (central showcase, dead room)

- hydraulic wool press (16)
- hand-jacked wool press (8)

9 Supporting (central showcase, understair niches)

- wharf piles (6, 20, 50, 86, 87, 100)
- beams & columns (114, 117, 119)

10 Weighing (central showcase, dead room)

- Avery scale (7)
- 3 weighs (29)

11 Wheeling (central showcase, dead room, wall niche)

- 14 two-wheel trolleys (12, 39)
- large two-wheel trolley (36)
- three-wheel keg trolleys (14, 45)
- 4 four-wheel trolleys (9)
- 2 five-wheel trolleys (22)
- 2 six-wheel trolleys (46, 77)

- 14 top-hung cargo doors (104)

12 Signage (central showcase, dead room, wall niche)

- metal lettering (13)
- sign (58)
- sign (118)

13.0 APPENDIX B: ITEMS RECOMMENDED FOR RETENTION & FURTHER STORAGE

The archaeology artefacts/collection that is temporarily stored within a container are considered significant and important to the understanding of the historical uses and occupation of the Walsh Bay Precinct. They are recommended to be kept together for educational and research purposes and be stored in a repository with public access to their collection.

Possible storage locations:

- Power House Museum
- NSW Maritime Museum
- Historic House Trust
- City of Sydney

14.0 APPENDIX C: ITEMS RECOMMENDED FOR REUSE & RECYCLE

The following excess objects have been nominated for reuse & recycling. As noted in section 14.1 above more than 50% of the items have been ranked as *Low* significance therefore recycling and reuse of the items is expected to some extent.

- 14 top-hung cargo doors (104) - office/performance space partitions
- trap doors (105) - furniture
- 4 four-wheel trolleys (9) - furniture
- metal lettering (13) - artworks
- misc timber/metal/glass/stone elements - construction/furniture/artworks/recycling

Recommendations:

Items should be advertised on relevant media and websites possibly Communities NSW's public notices within Walsh Bay Precinct or elsewhere (if any), the Walsh Bay Sydney Theatre Company's notice boards, City of Sydney's public notices, Art Society's website or NSW Maritime's website (if such public notice boards are available) for Expression of Interest by artists or other professionals who regularly use timber, glass or stone materials for their artworks.

There also may be a potential to utilise some of the produced artworks within the parks of the Walsh Bay Precinct if found suitable.

It is also recommend that a timber specialist be engaged to inspect the timber materials and determine their species. There may be some timber items that are made of valuable timber species with potential for sale to relevant restoration companies.

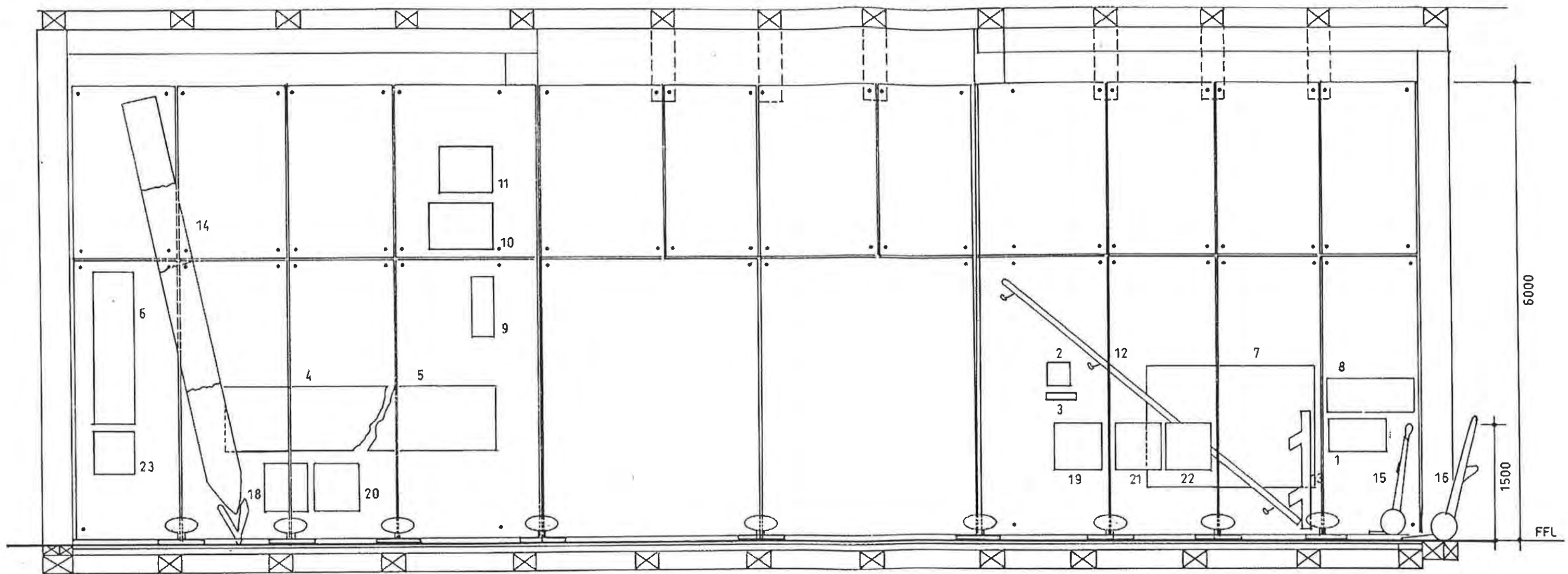
15.0 APPENDIX D: ITEMS RECOMMENDED FOR DISPOSAL

It is not clear at this stage which items would be disposed due to uncertainty of the amount of the moveable items within Pier 2/3 that would be displayed, reused or recycled. The options recommended above depend on the agreement between NSW Maritime and Communities NSW, and other interested groups for recycling, reuse as sculptures or artwork, and availability of suitable repositories for storage. Therefore, any items that have not been nominated or required for display, reuse, recycling or storage are recommended for disposal via transfer to collection institution, sale or dumping in this order.

Stone materials can be offered to the NSW Government's stone yard or City of Sydney for reuse elsewhere. Similarly, timber elements may have potential to attract joinery workshops.

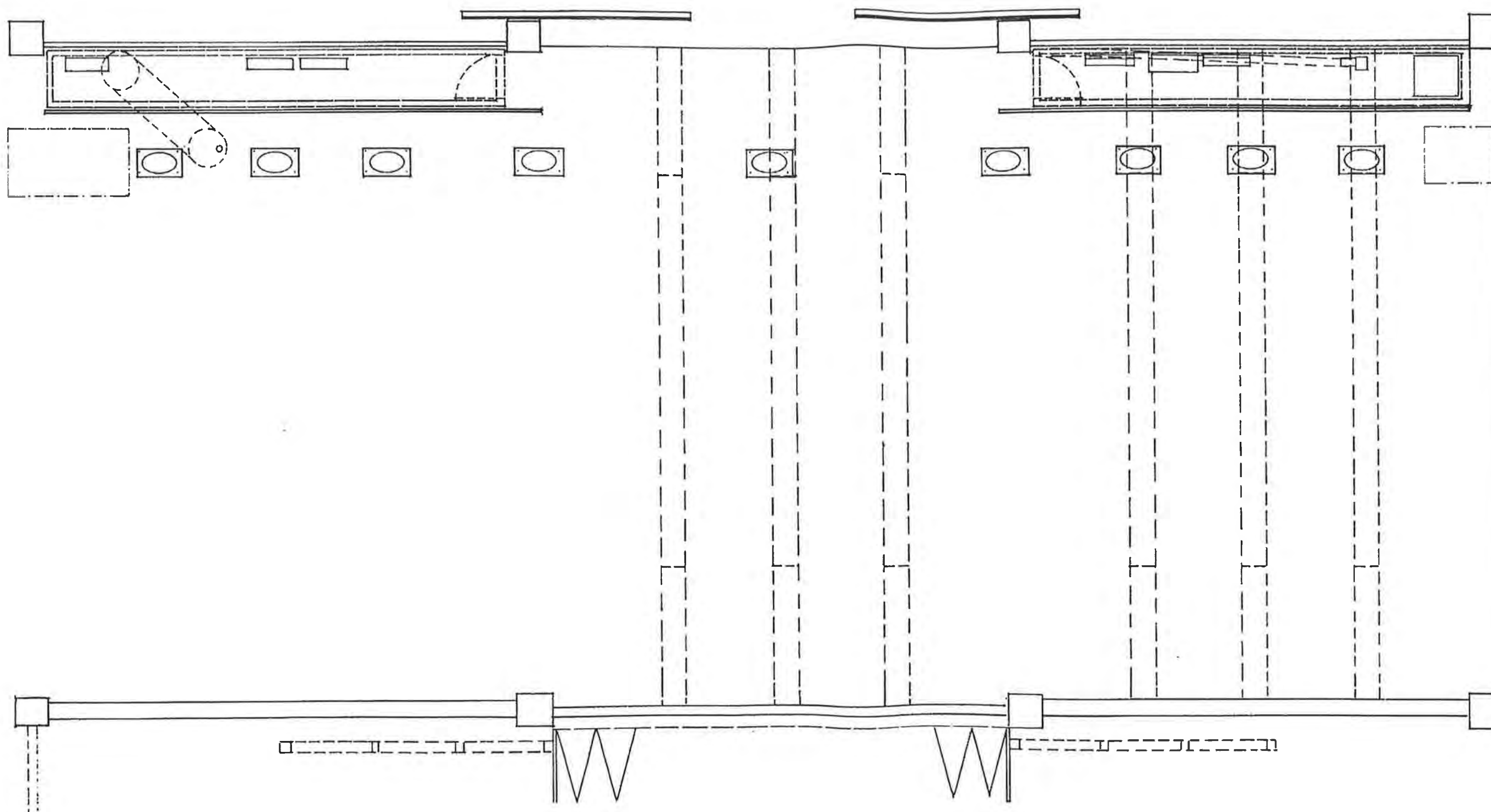
16.0 COPY OF THE WALSH BAY PIER 2-3 MOVABLE HERITAGE CATALOGUE FROM THE GODDEN MACKAY LOGAN REPORT

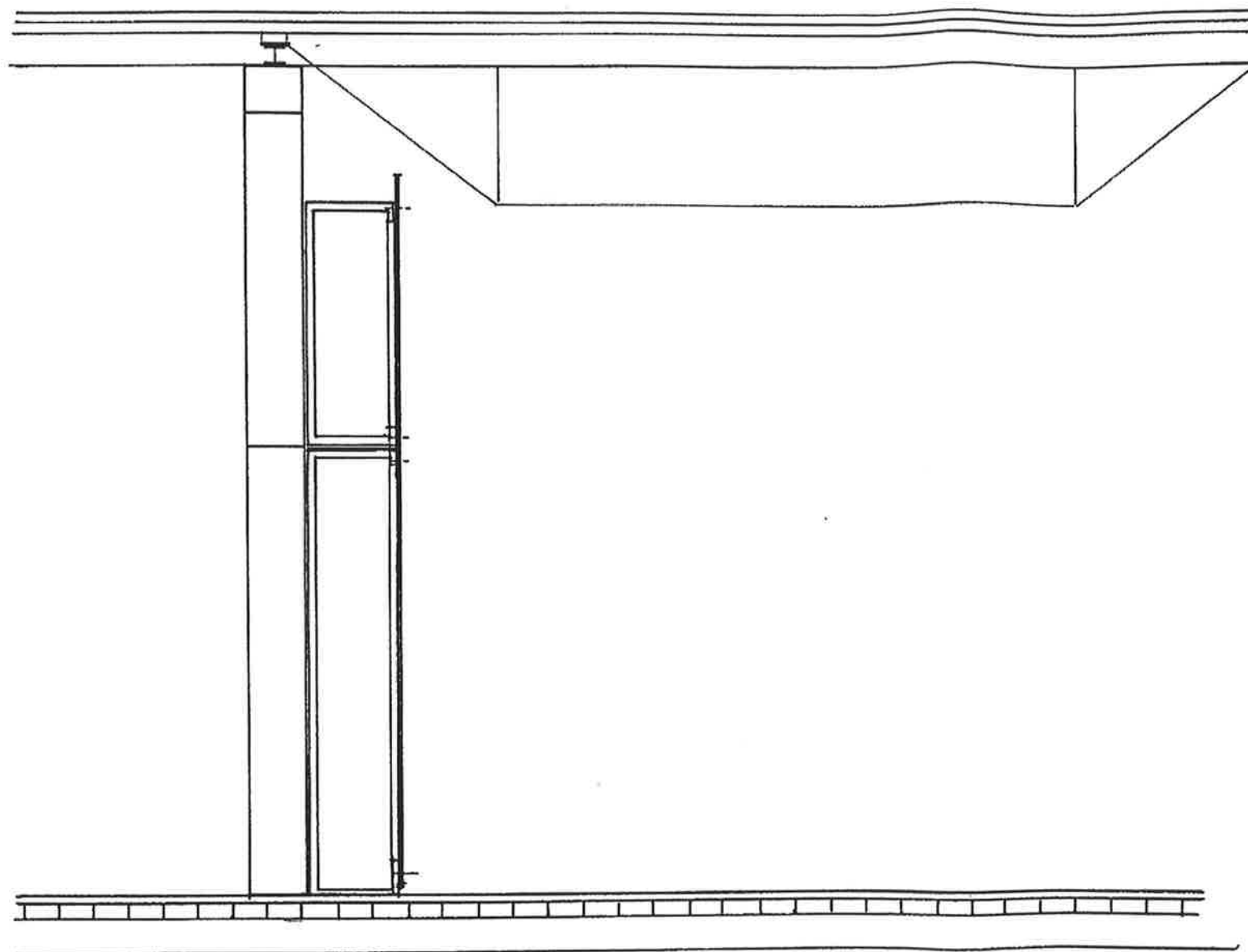
Appendix E

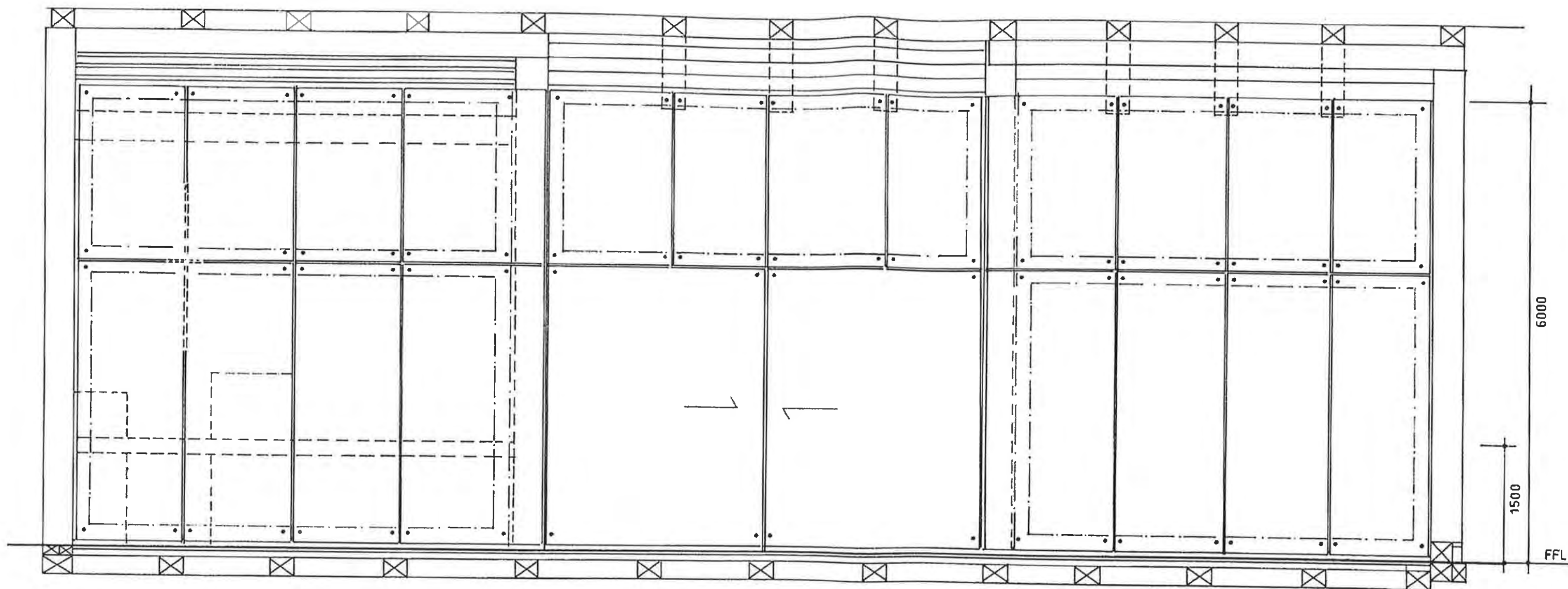


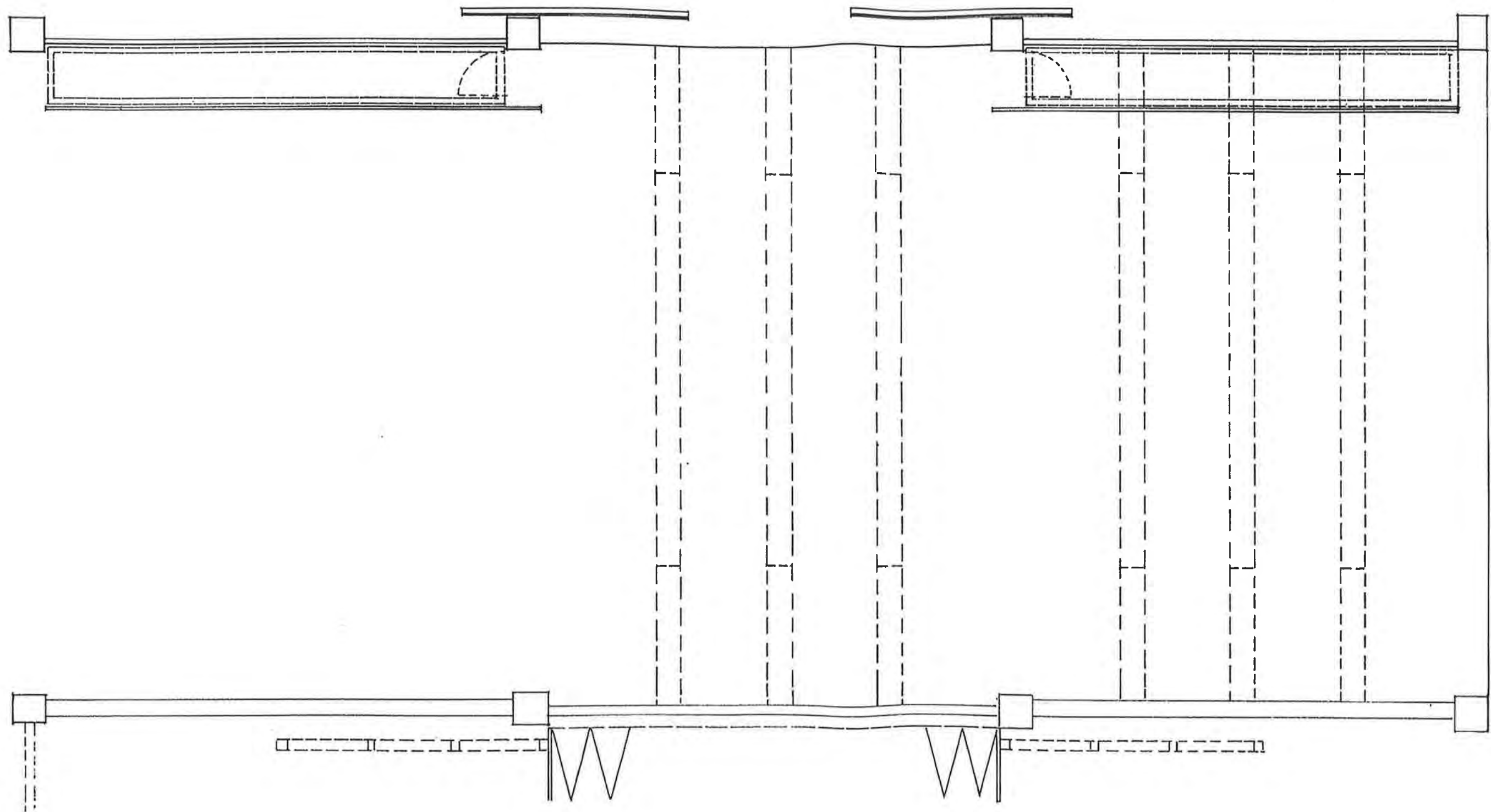
KEY TO ARTEFACTS

1	Admission to Wharf notice	10	Load not to exceed 1800lbs sign
2	Elevator operator instructions	11	Outlet sign
3	Caution steep stairs	12	Stair handrail with evidence of hooks
4	Boxing ephemera (left)	13	Stair newel post
5	Boxing ephemera (right)	14	Wharf piling, copper sheath & watermark
6	Boxing ephemera	15	Dumped wool bale trolley
7	WWII 'War Effort' posters (3) panel	16	Baggage trolley
8	Gatekeeper and Storemen sign	17	Barrel trolley
9	Emergency Stop Switch sign		









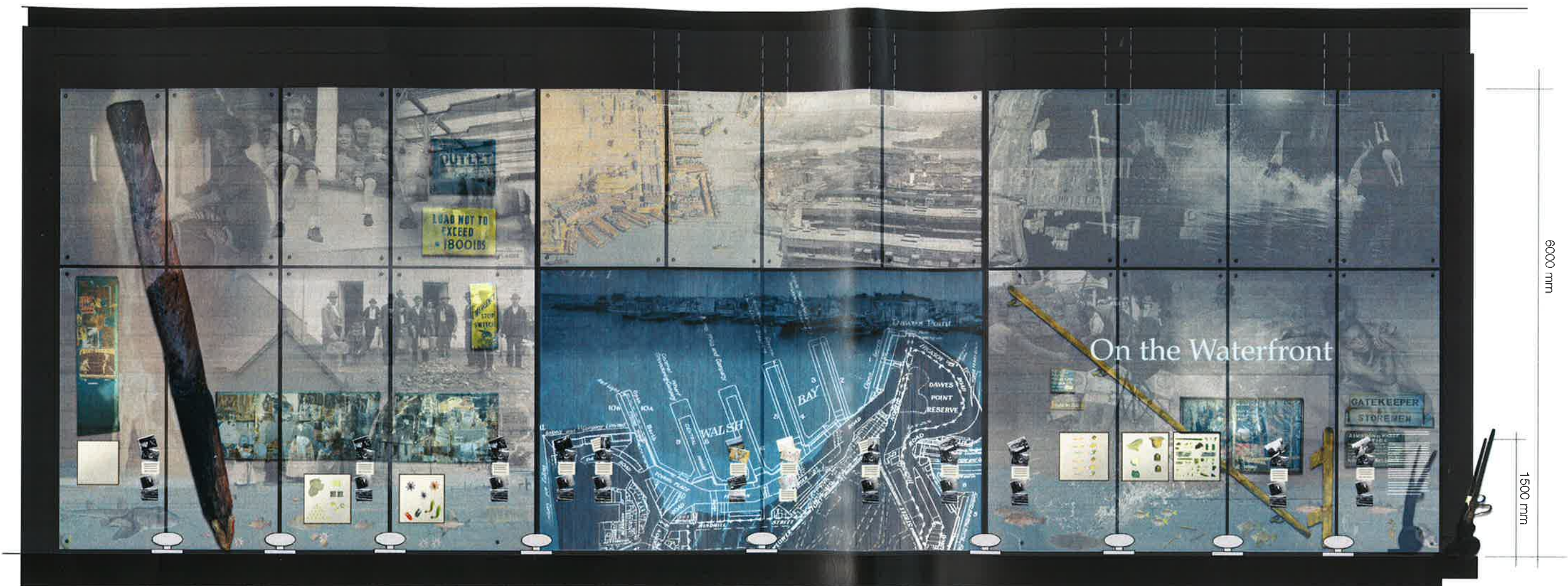


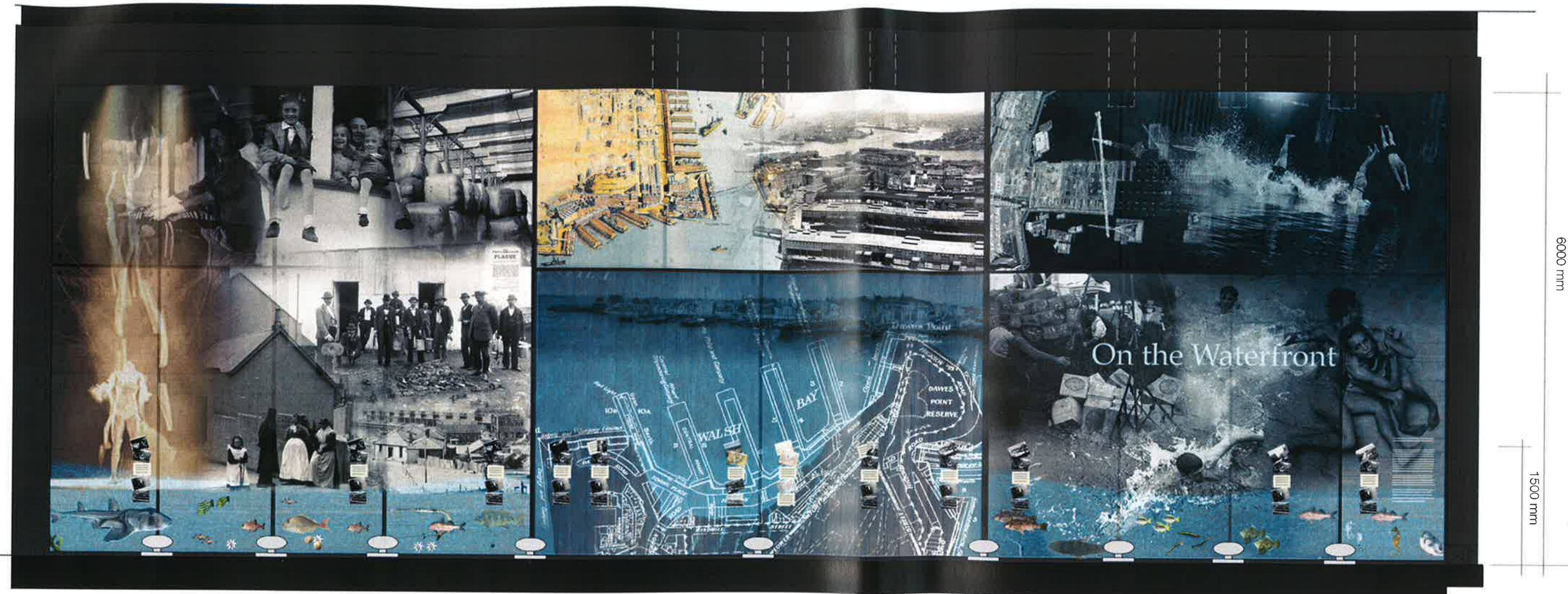
WALSH BAY INTERPRETATION NODE • Preliminary Concept Design - Display Wall Elevation - not to scale

The Walsh Bay Partnership

Lucy Richard
Bannyan Wood

Hawke Graphics • 20 July 2004





The images used in this concept design have not been approved for reproduction by the copyright owners. This design may not be reproduced, or disseminated electronically without the approval of the copyright owners.



Life



Work



Place