

STAGE 1 SSDA AMENDED CONCEPT PROPOSAL

LEGEND:

- TOWER
- TOWER BASE
- PODIUM
- DECK
- UPGRADES TO EXISTING PROMENADE



New South Wales Government
Independent Planning Commission

Issued under the Environmental Planning and Assessment Act 1979

Approved Application No. SSO 7684

granted on the 13 May 2019

Signed H

Sheet No. 1 of 15


NOTES:

1. "the podium articulation zone may include architectural features / projections, balustrades, awnings and the like and shall not include any GFA and/or balconies".
2. "artworks, garden pavilions, kiosks and signage may extend beyond the building envelope where these components are within, and relate specifically to, the publicly accessible open space or the public domain".
3. "Service poles and antenna/aerials (and the like), balustrades and vegetation may extend beyond the building envelope".

STAGE 1 SSDA AMENDED CONCEPT PROPOSAL

LEGEND:

- TOWER
- TOWER BASE
- PODIUM
- DECK
- DRUITT STREET BRIDGE


New South Wales Government
Independent Planning Commission
Issued under the Environmental Planning and Assessment Act 1979

Approved Application No. SSD 7684

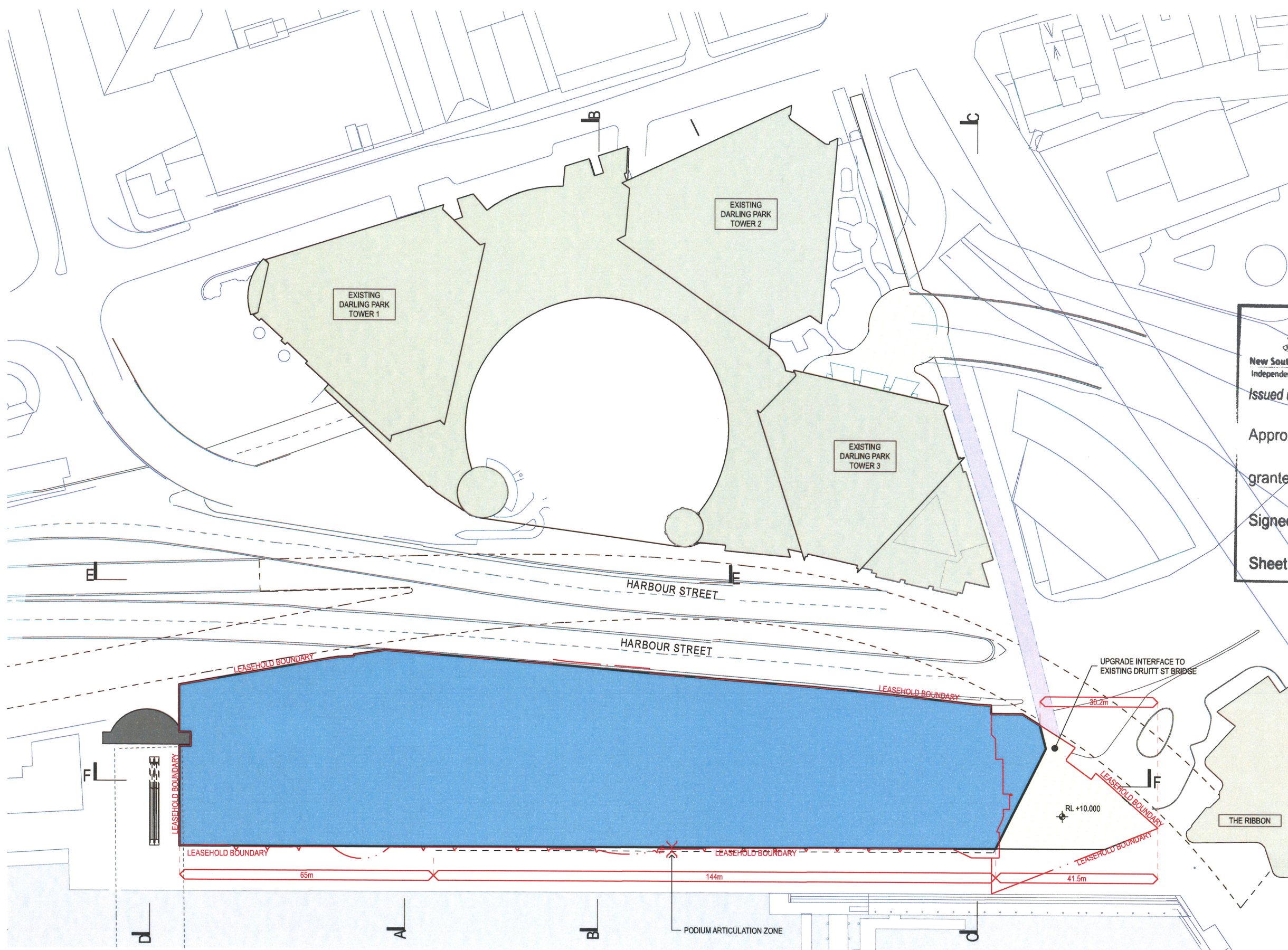
granted on the 13 May 2019

Signed H

Sheet No. 2 of 15

NOTES:

1. "the podium articulation zone may include architectural features / projections, balustrades, awnings and the like and shall not include any GFA and/or balconies".
2. "artworks, garden pavilions, kiosks and signage may extend beyond the building envelope where these components are within, and relate specifically to, the publicly accessible open space or the public domain".
3. "Service poles and antenna/aerials (and the like), balustrades and vegetation may extend beyond the building envelope".




Envelope Plan - Level 1

STAGE 1 SSDA AMENDED CONCEPT PROPOSAL

LEGEND:

- TOWER
- TOWER BASE
- PODIUM
- DECK



New South Wales Government
Independent Planning Commission

Issued under the Environmental Planning and Assessment Act 1979

Approved Application No. SSD 7684

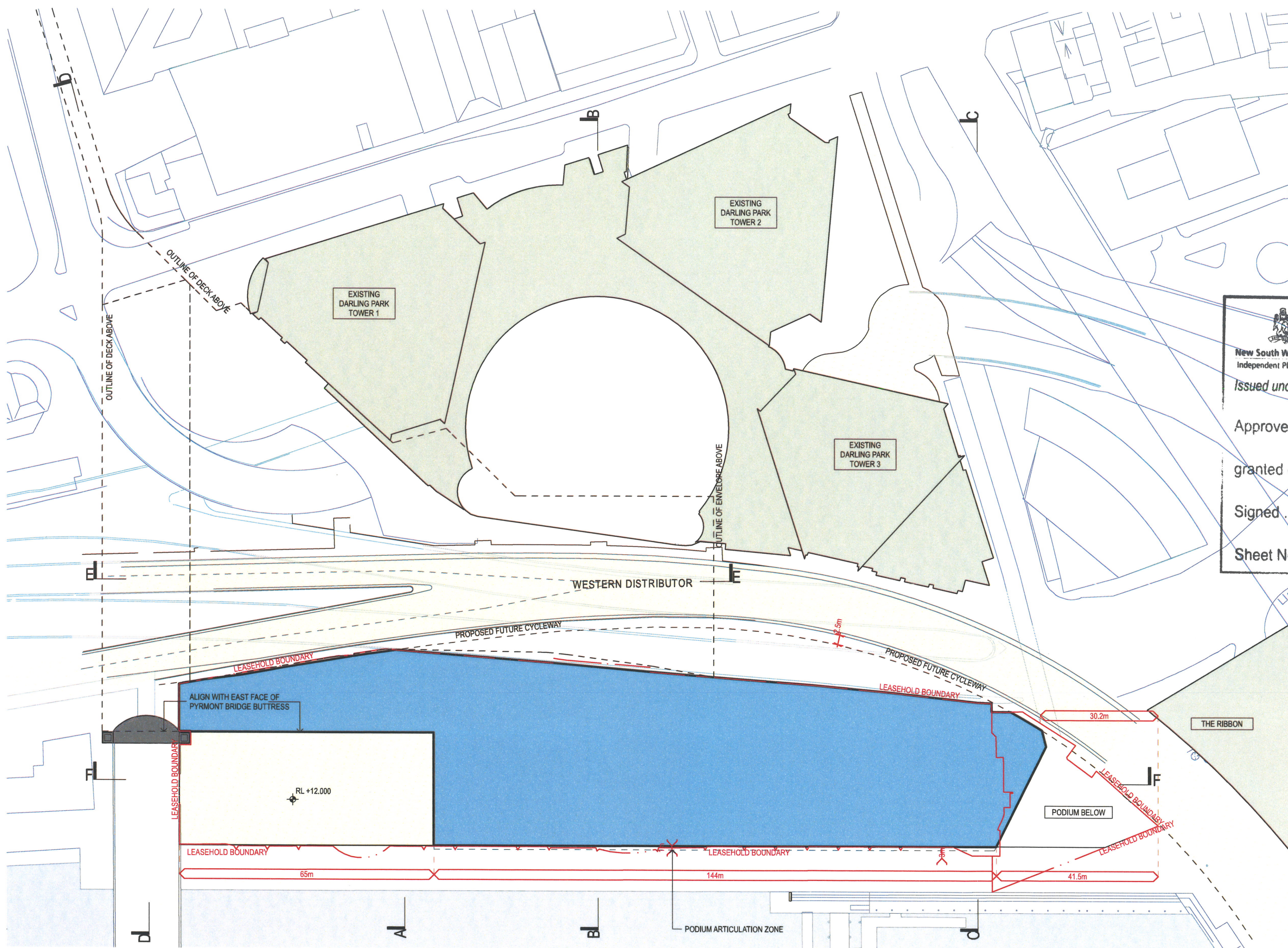
granted on the 13 May 2019

Signed JH

Sheet No. 3 of 15

NOTES:

1. "the podium articulation zone may include architectural features / projections, balustrades, awnings and the like and shall not include any GFA and/or balconies".
2. "artworks, garden pavilions, kiosks and signage may extend beyond the building envelope where these components are within, and relate specifically to, the publicly accessible open space or the public domain".
3. "Service poles and antenna/aerials (and the like), balustrades and vegetation may extend beyond the building envelope".



Envelope Plan - Level 2

DARLING PARK TRUST AND DARLING PARK PROPERTY TRUST - COCKLE BAY PARK DEVELOPMENT



For Information **SK-1.03 Revision 02**

STAGE 1 SSDA AMENDED CONCEPT PROPOSAL

LEGEND:

- TOWER
- TOWER BASE
- PODIUM
- DECK
- CLEARANCE TO RMS REQUIREMENTS



New South Wales Government
Independent Planning Commission

Issued under the Environmental Planning and Assessment Act 1979

Approved Application No. SSO 7684

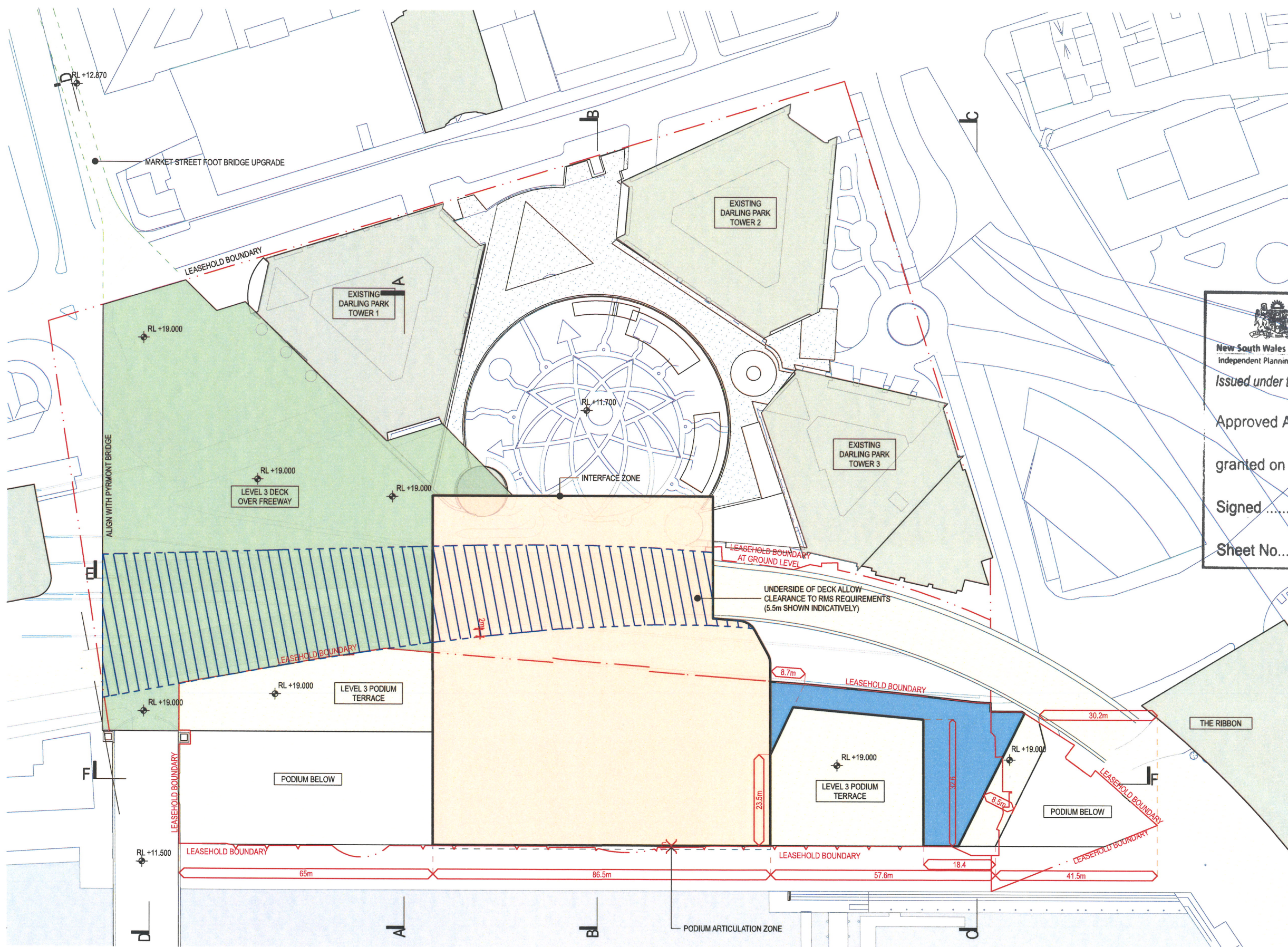
granted on the 13 May 2019

Signed JH

Sheet No. 4 of 15

NOTES:

1. "the podium articulation zone may include architectural features / projections, balustrades, awnings and the like and shall not include any GFA and/or balconies".
2. "artworks, garden pavilions, kiosks and signage may extend beyond the building envelope where these components are within, and relate specifically to, the publicly accessible open space or the public domain".
3. "Service poles and antenna/aerials (and the like), balustrades and vegetation may extend beyond the building envelope".



Envelope Plan - Level 3

DARLING PARK TRUST AND DARLING PARK PROPERTY TRUST - COCKLE BAY PARK DEVELOPMENT

0 10 20 50m
1:1000 @ A3
31/05/2019

For Information **SK-1.04 Revision 02**

STAGE 1 SSDA AMENDED CONCEPT PROPOSAL

LEGEND:

- TOWER
- TOWER BASE
- PODIUM
- DECK



New South Wales Government
Independent Planning Commission

Issued under the Environmental Planning and Assessment Act 1979

Approved Application No. SSD 7684

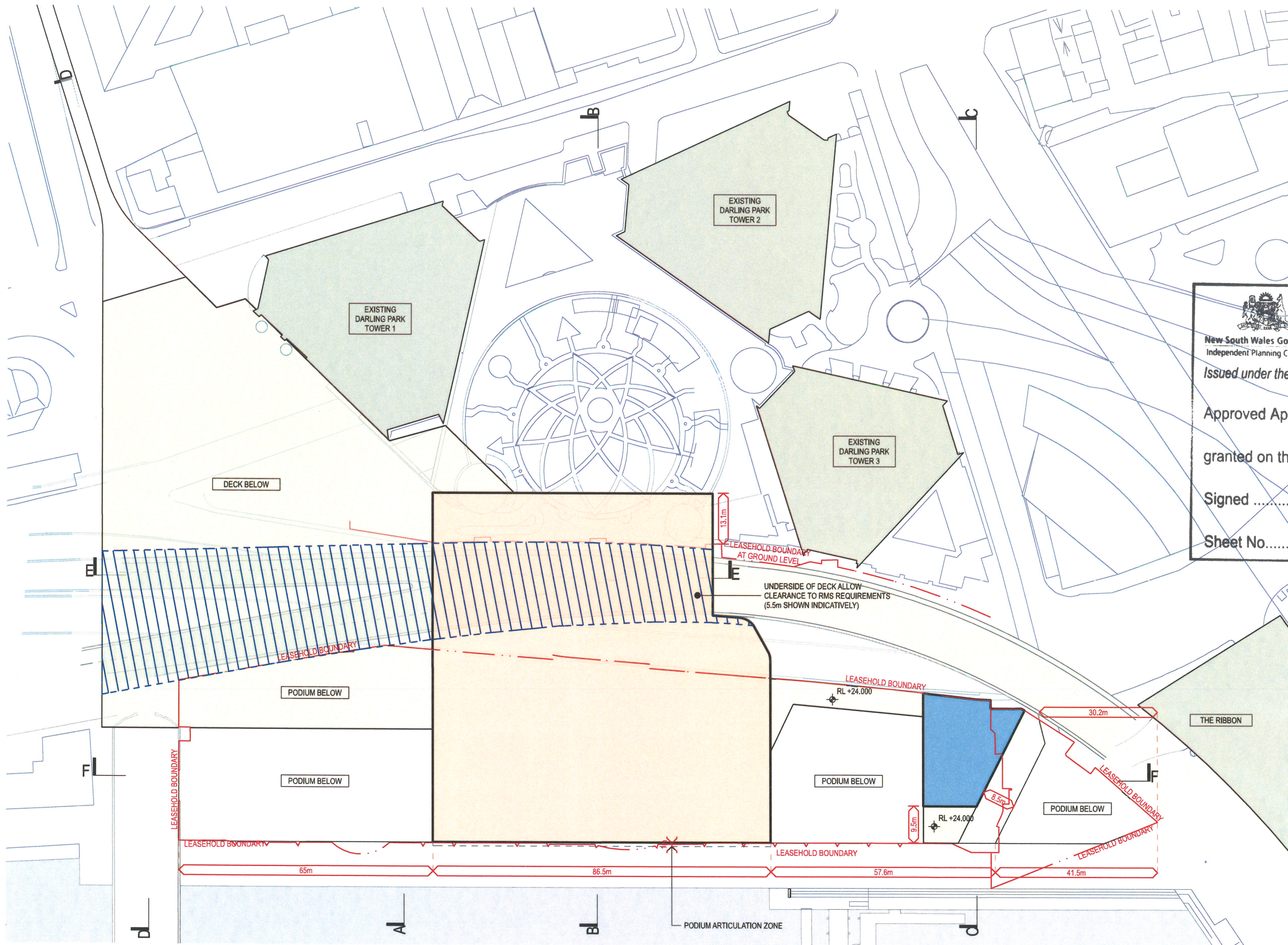
granted on the 13 May 2019

Signed JH

Sheet No. 5 of 15

NOTES:

1. "the podium articulation zone may include architectural features / projections, balustrades, awnings and the like and shall not include any GFA and/or balconies".
2. "artworks, garden pavilions, kiosks and signage may extend beyond the building envelope where these components are within, and relate specifically to, the publicly accessible open space or the public domain".
3. "Service poles and antenna/aerials (and the like), balustrades and vegetation may extend beyond the building envelope".



Envelope Plan - Level 4

STAGE 1 SSDA AMENDED CONCEPT PROPOSAL

LEGEND:

- TOWER
- TOWER BASE
- PODIUM
- DECK



New South Wales Government
Independent Planning Commission

Issued under the Environmental Planning and Assessment Act 1979

Approved Application No. SSD 7684

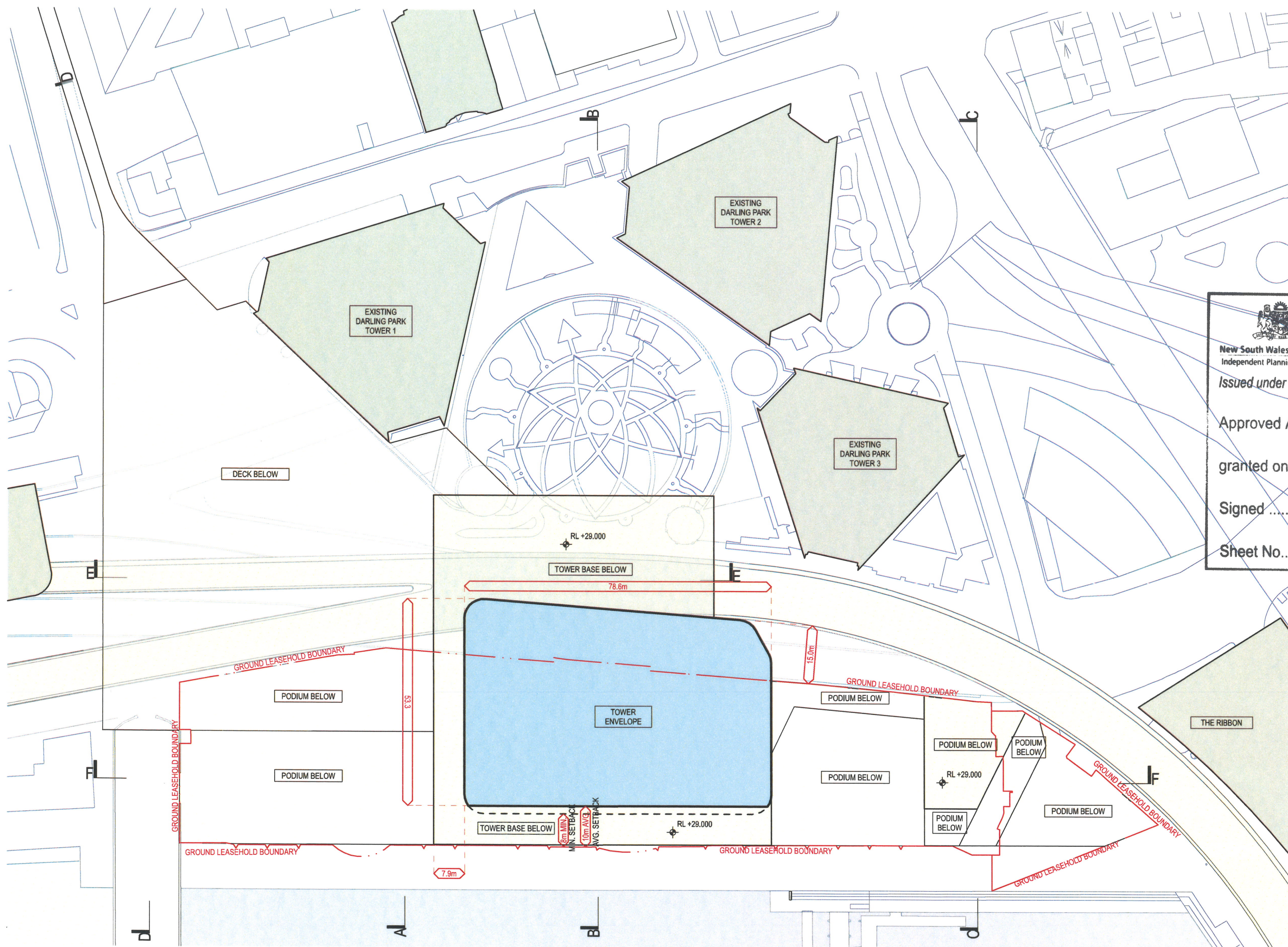
granted on the 13 May 2019

Signed JH

Sheet No. 6 of 15

NOTES:

1. "the podium articulation zone may include architectural features / projections, balustrades, awnings and the like and shall not include any GFA and/or balconies".
2. "artworks, garden pavilions, kiosks and signage may extend beyond the building envelope where these components are within, and relate specifically to, the publicly accessible open space or the public domain".
3. "Service poles and antenna/aerials (and the like), balustrades and vegetation may extend beyond the building envelope".



fjmt

Envelope Plan - Typical Tower Level

DARLING PARK TRUST AND DARLING PARK PROPERTY TRUST - COCKLE BAY PARK DEVELOPMENT

0 10 20 50m
1:1000 @ A3
31/05/2019


For Information

SK-1.06 Revision 02

STAGE 1 SSDA AMENDED CONCEPT PROPOSAL

LEGEND:

- TOWER
- TOWER BASE
- PODIUM
- DECK



New South Wales Government
Independent Planning Commission

Issued under the Environmental Planning and Assessment Act 1979

Approved Application No... SSD 7684 ...

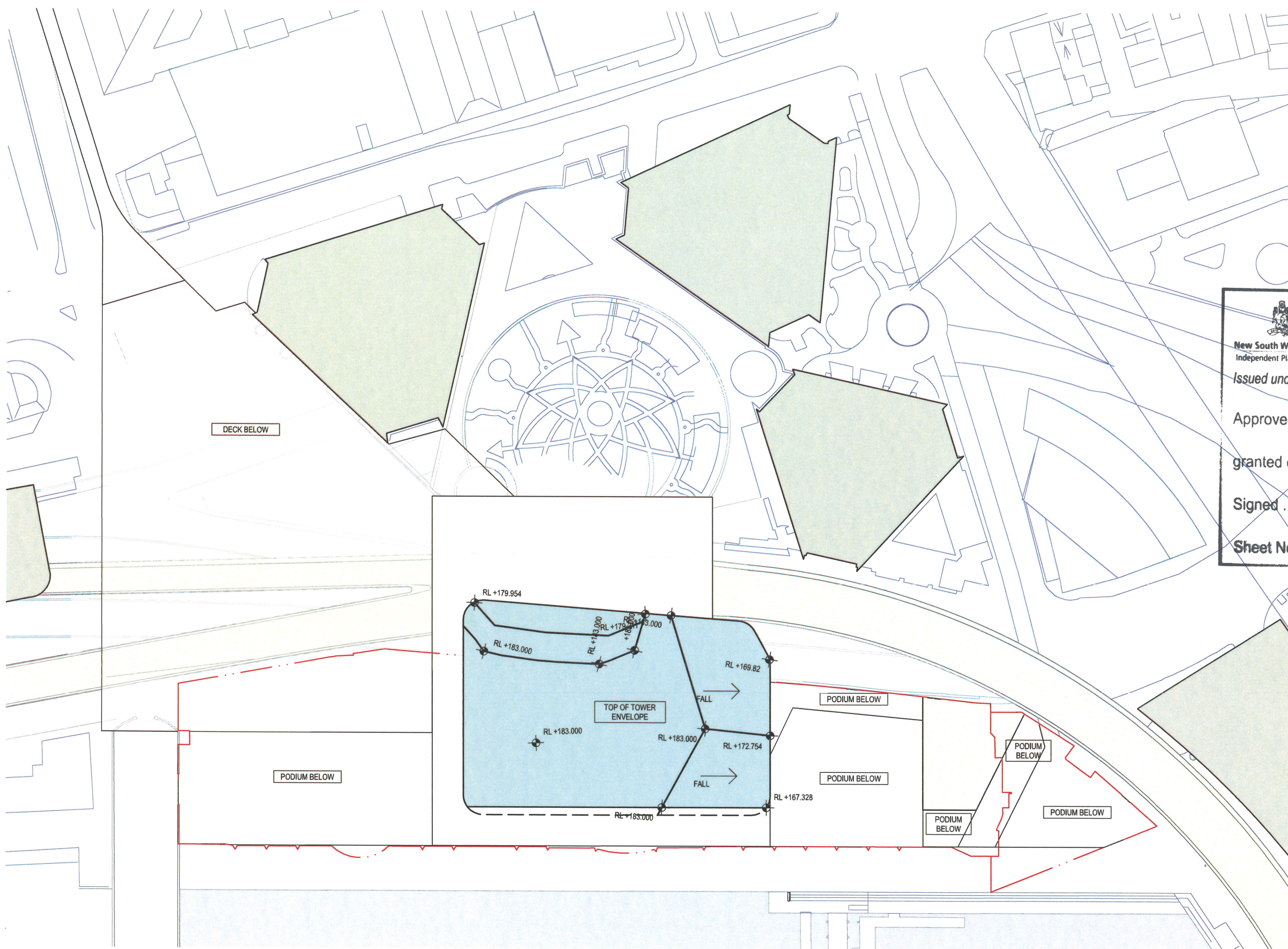
granted on the ... 13 May 2019 ...

Signed JH

Sheet No. 7 of 15

NOTES:

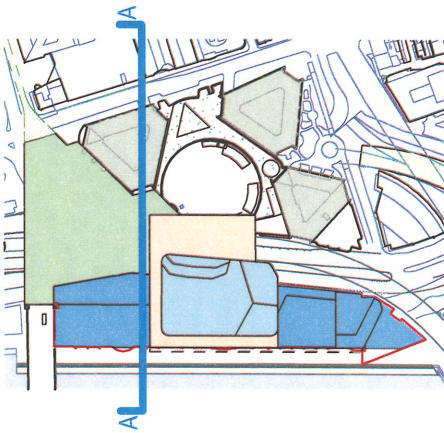
1. "the podium articulation zone may include architectural features / projections, balustrades, awnings and the like and shall not include any GFA and/or balconies".
2. "artworks, garden pavilions, kiosks and signage may extend beyond the building envelope where these components are within, and relate specifically to, the publicly accessible open space or the public domain".
3. "Service poles and antenna/aerials (and the like), balustrades and vegetation may extend beyond the building envelope".



STAGE 1 SSDA AMENDED
CONCEPT PROPOSAL

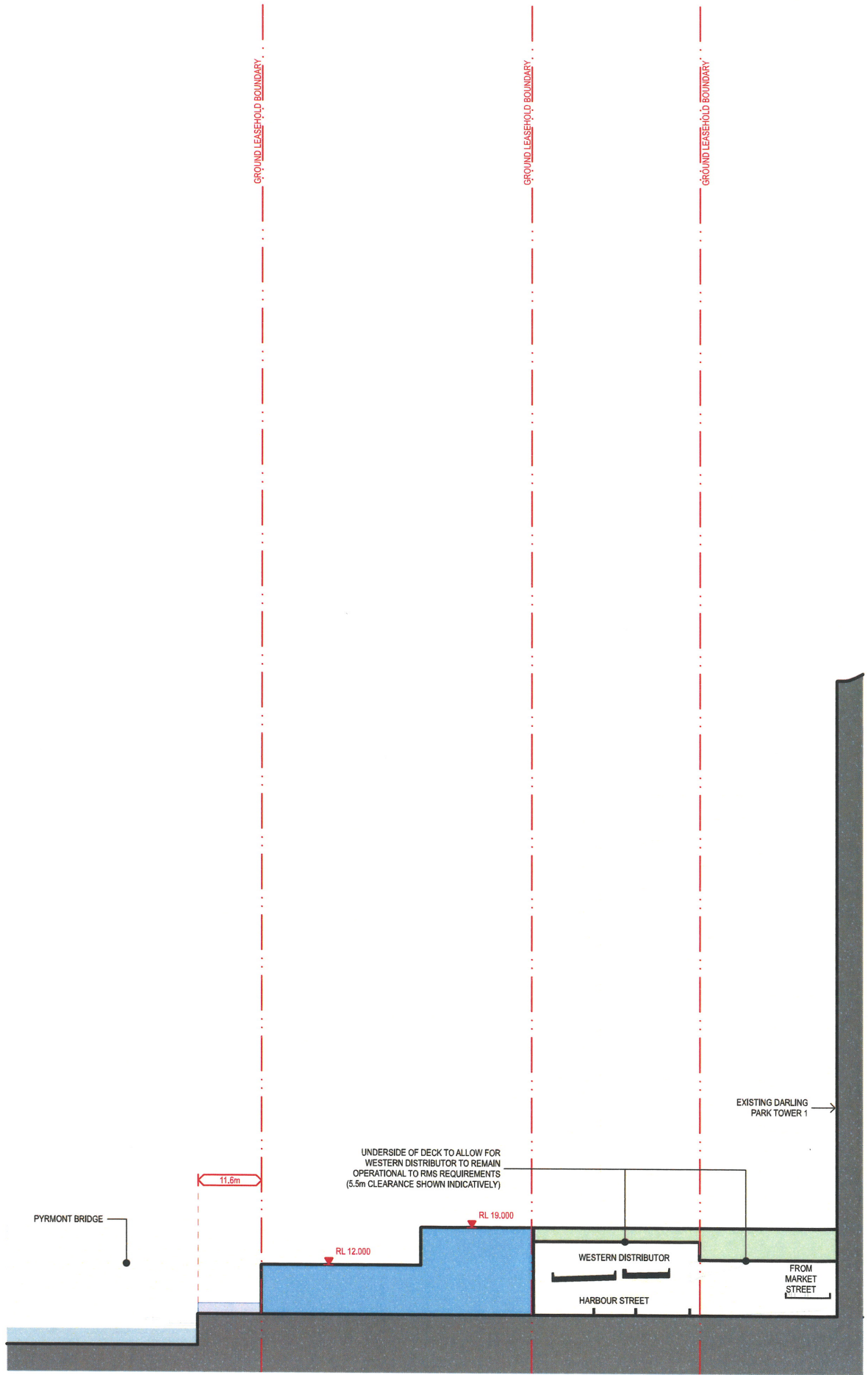
LEGEND:

- TOWER
- TOWER BASE
- PODIUM
- DECK
- UPGRADES TO EXISTING PROMENADE



NOTES:

- "the podium articulation zone may include architectural features / projections, balustrades, awnings and the like and shall not include any GFA and/or balconies".
- "artworks, garden pavilions, kiosks and signage may extend beyond the building envelope where these components are within, and relate specifically to, the publicly accessible open space or the public domain".
- "Service poles and antenna/aerials (and the like), balustrades and vegetation may extend beyond the building envelope".



New South Wales Government
Independent Planning Commission

Issued under the Environmental Planning and Assessment Act 1979

Approved Application No. SSD 7684

granted on the 13 May 2019

Signed [Signature]

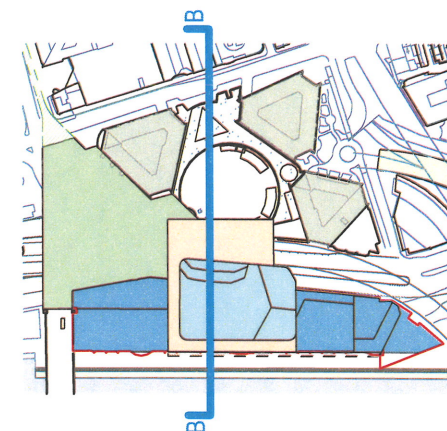
Sheet No. 8 of 15

Section A - Through Northern Public Open Space

STAGE 1 SSDA AMENDED CONCEPT PROPOSAL

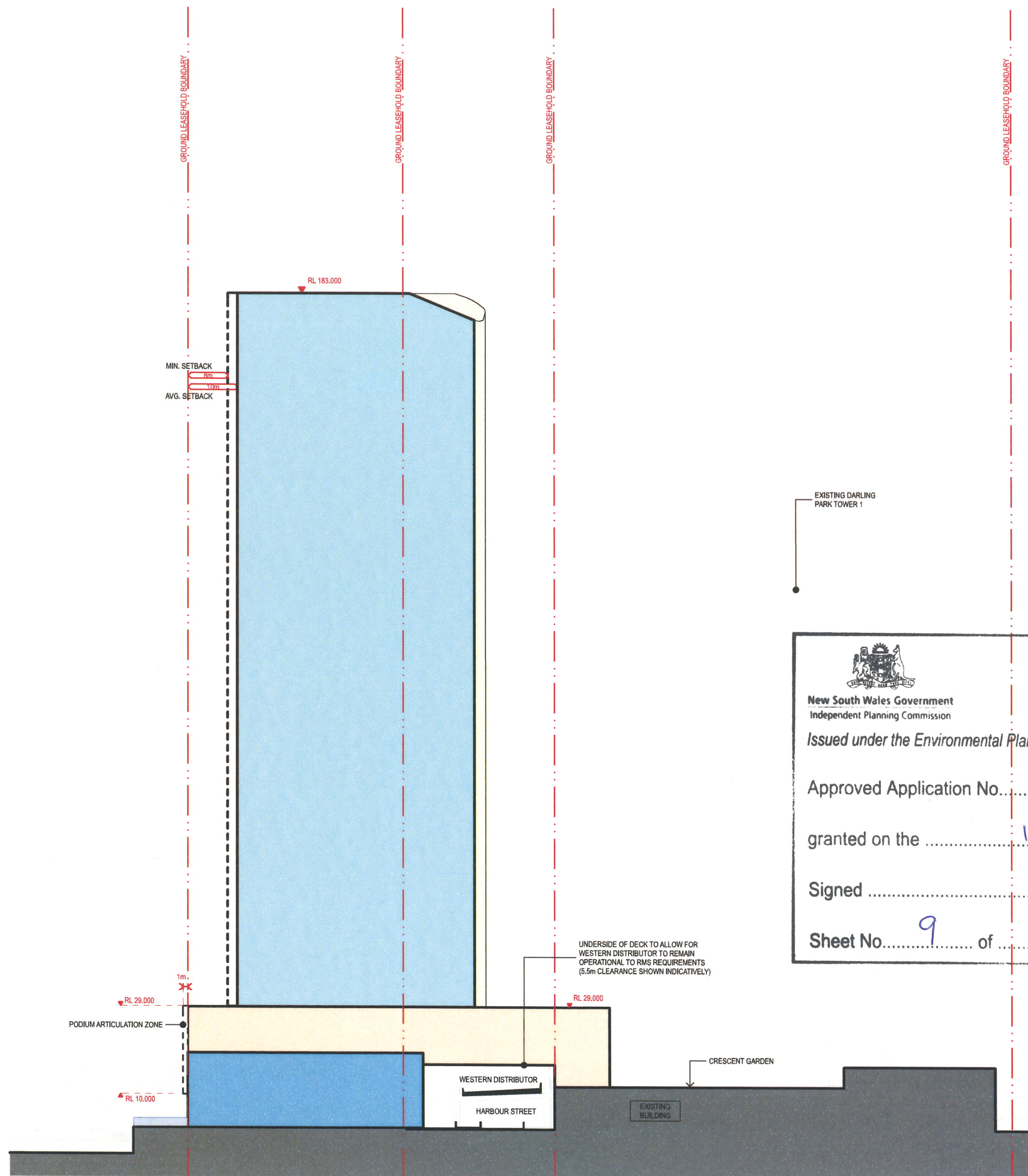
LEGEND:


- TOWER
- TOWER BASE
- PODIUM
- DECK
- UPGRADES TO EXISTING PROMENADE



NOTES:

1. "the podium articulation zone may include architectural features / projections, balustrades, awnings and the like and shall not include any GFA and/or balconies".
2. "artworks, garden pavilions, kiosks and signage may extend beyond the building envelope where these components are within, and relate specifically to, the publicly accessible open space or the public domain".
3. "Service poles and antenna/aerials (and the like), balustrades and vegetation may extend beyond the building envelope".



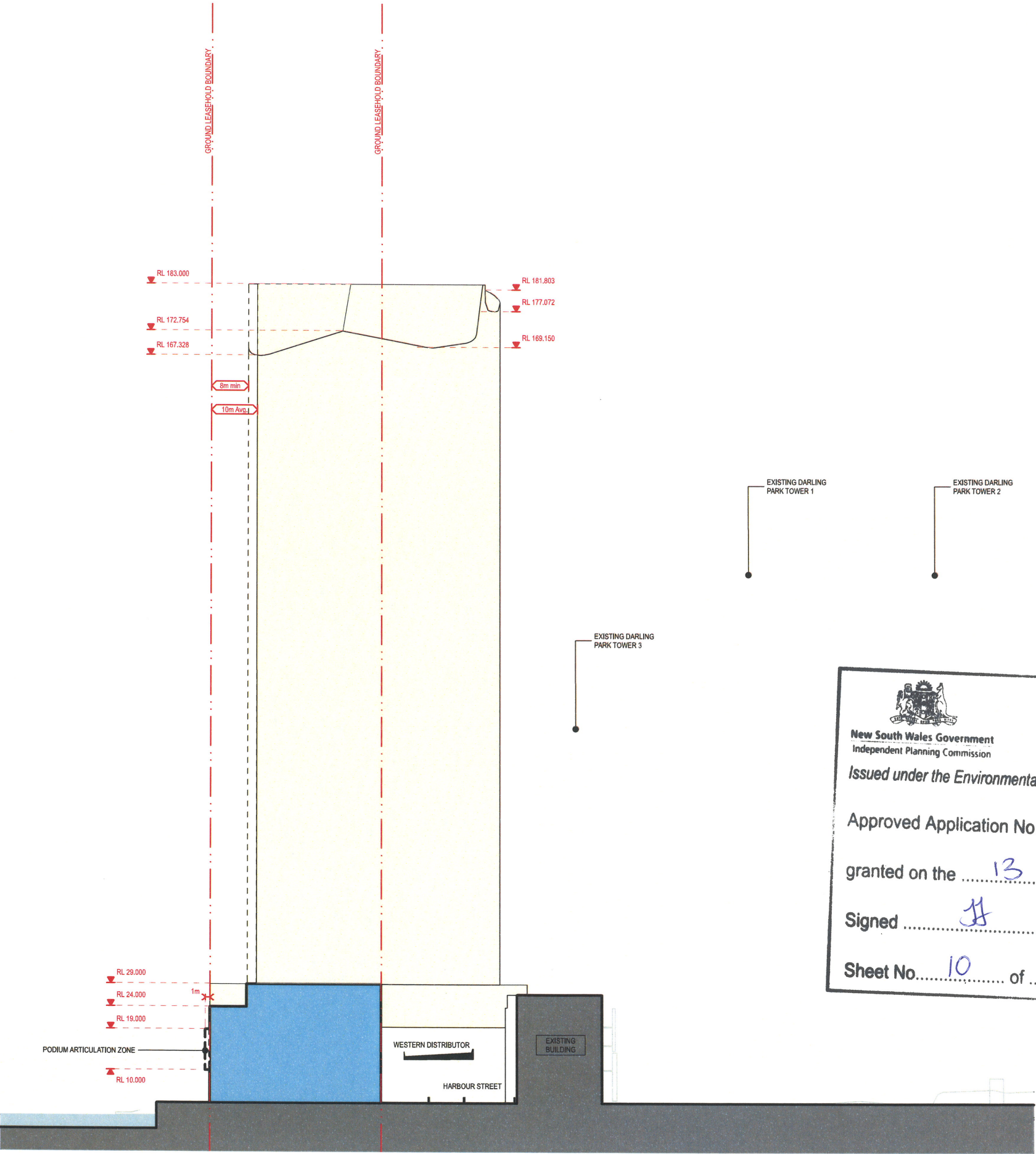
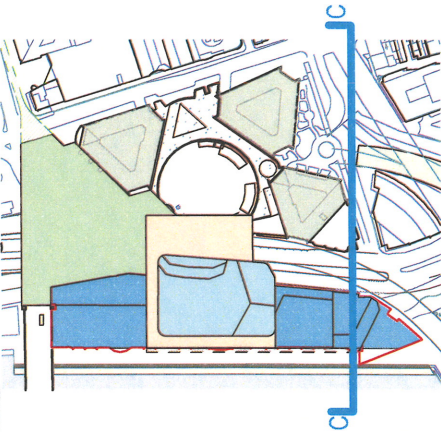

New South Wales Government
 Independent Planning Commission
Issued under the Environmental Planning and Assessment Act 1979

Approved Application No. SSO 7684
 granted on the 13 May 2019
 Signed JH
 Sheet No. 9 of 15

STAGE 1 SSDA AMENDED
CONCEPT PROPOSAL

LEGEND:

- TOWER
- TOWER BASE
- PODIUM
- DECK



New South Wales Government
Independent Planning Commission
Issued under the Environmental Planning and Assessment Act 1979
Approved Application No. SSD 7684
granted on the 13 May 2019
Signed [Signature]
Sheet No. 10 of 15

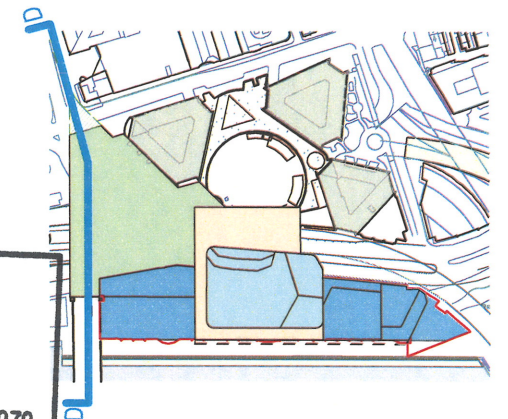
NOTES:

- "the podium articulation zone may include architectural features / projections, balustrades, awnings and the like and shall not include any GFA and/or balconies".
- "artworks, garden pavilions, kiosks and signage may extend beyond the building envelope where these components are within, and relate specifically to, the publicly accessible open space or the public domain".
- "Service poles and antenna/aerials (and the like), balustrades and vegetation may extend beyond the building envelope".

STAGE 1 SSDA AMENDED CONCEPT PROPOSAL

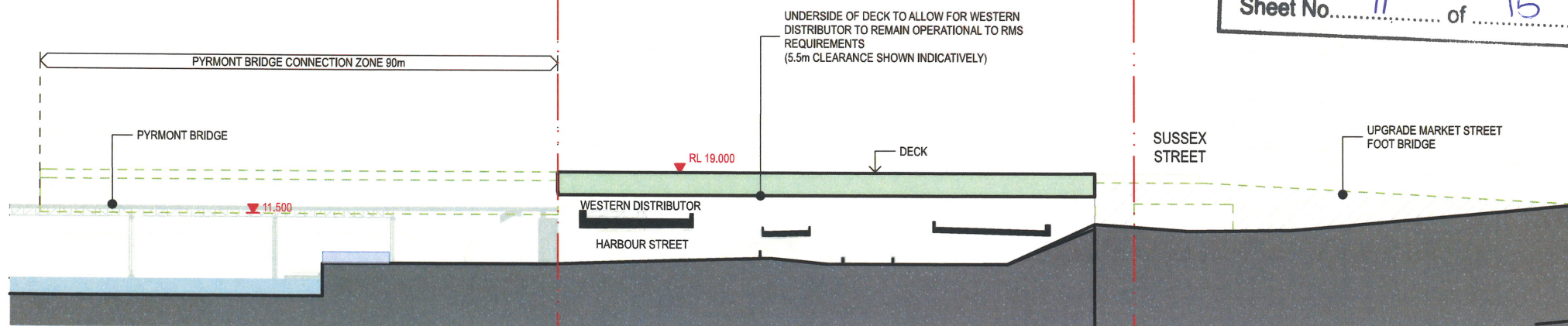
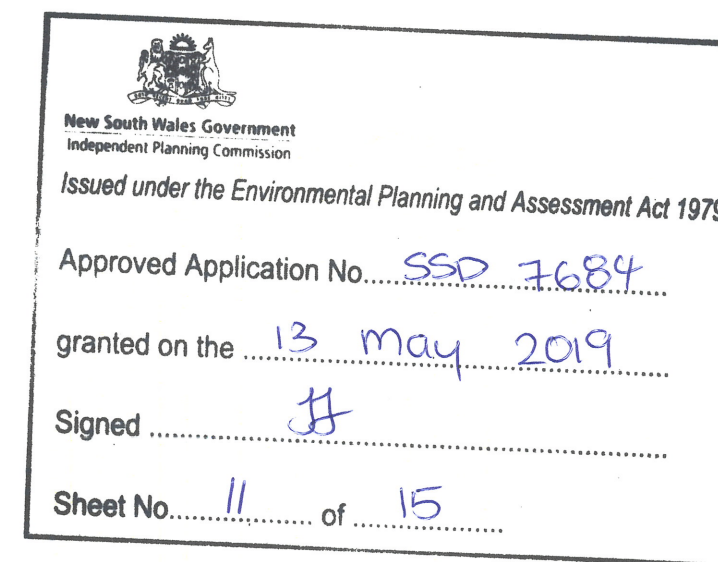
LEGEND:

- TOWER
- TOWER BASE
- PODIUM
- DECK
- UPGRADES TO EXISTING PROMENADE




NOTES:

1. "the podium articulation zone may include architectural features / projections, balustrades, awnings and the like and shall not include any GFA and/or balconies".
2. "artworks, garden pavilions, kiosks and signage may extend beyond the building envelope where these components are within, and relate specifically to, the publicly accessible open space or the public domain".
3. "Service poles and antenna/aerials (and the like), balustrades and vegetation may extend beyond the building envelope".



Section D - Through Land Bridge

STAGE 1 SSDA AMENDED
CONCEPT PROPOSAL



New South Wales Government
Independent Planning Commission

Issued under the Environmental Planning and Assessment Act 1979

Approved Application No. SSD 7684

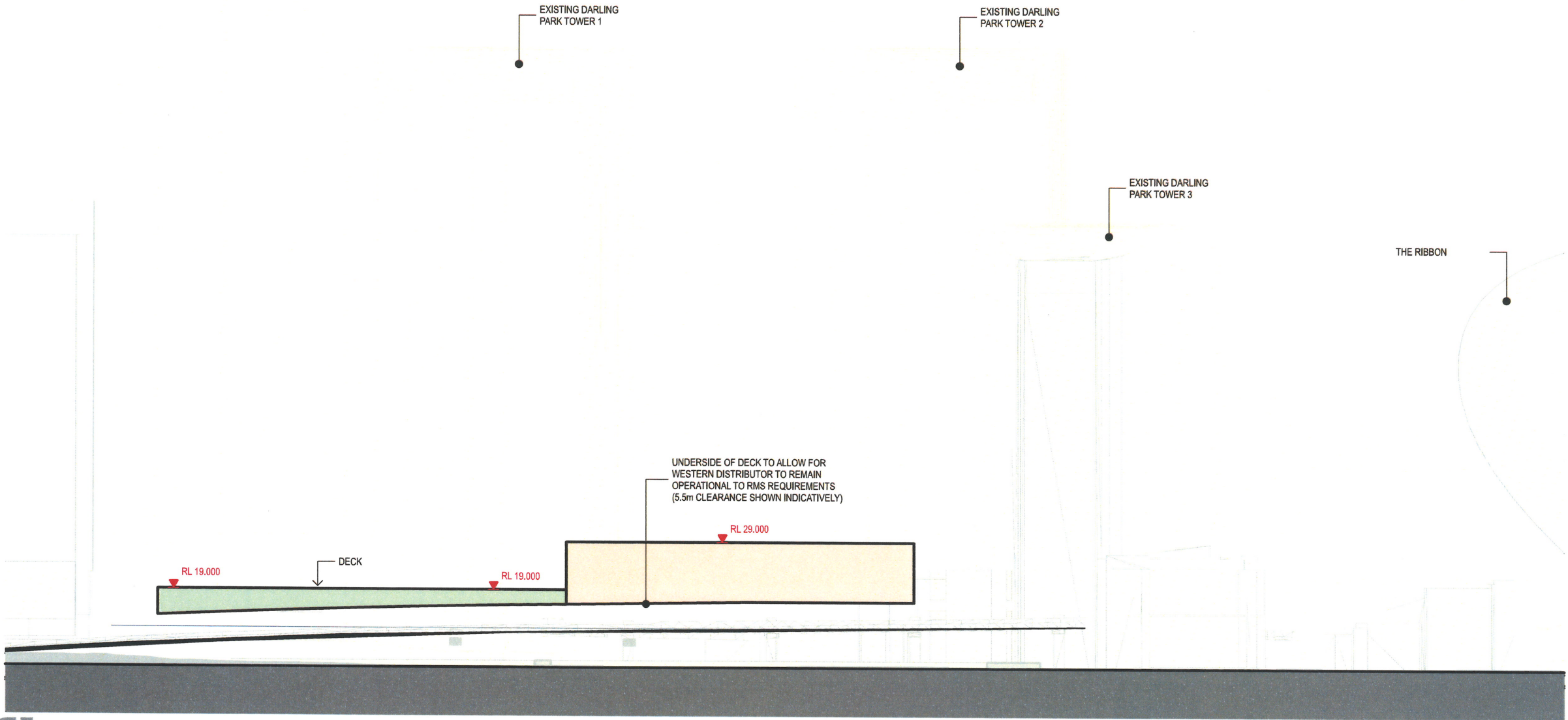
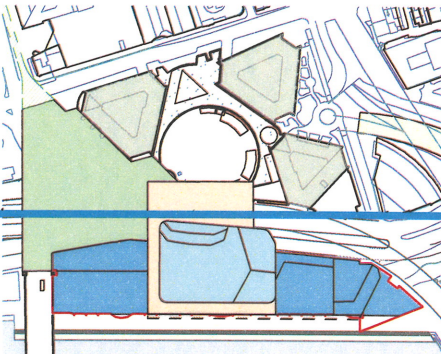
granted on the 13 May 2019

Signed [Signature]

Sheet No. 12 of 15

LEGEND:

- TOWER
- TOWER BASE
- PODIUM
- DECK




NOTES:

- "the podium articulation zone may include architectural features / projections, balustrades, awnings and the like and shall not include any GFA and/or balconies".
- "artworks, garden pavilions, kiosks and signage may extend beyond the building envelope where these components are within, and relate specifically to, the publicly accessible open space or the public domain".
- "Service poles and antenna/aerials (and the like), balustrades and vegetation may extend beyond the building envelope".




Section E - Across Deck

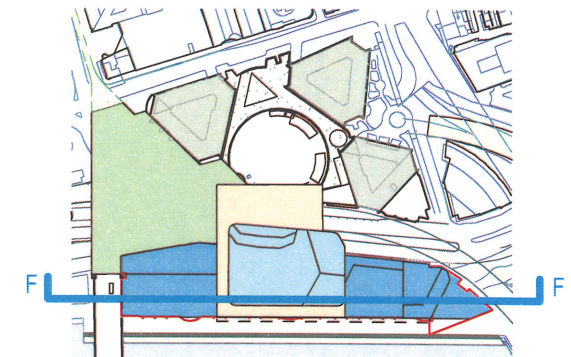
DARLING PARK TRUST AND DARLING PARK PROPERTY TRUST - COCKLE BAY PARK DEVELOPMENT


New South Wales Government
 Independent Planning Commission
 Issued under the Environmental Planning and Assessment Act 1979
 Approved Application No. SSD 7684
 granted on the 13 May 2019
 Signed JF
 Sheet No. 13 of 15

**STAGE 1 SSDA AMENDED
CONCEPT PROPOSAL**

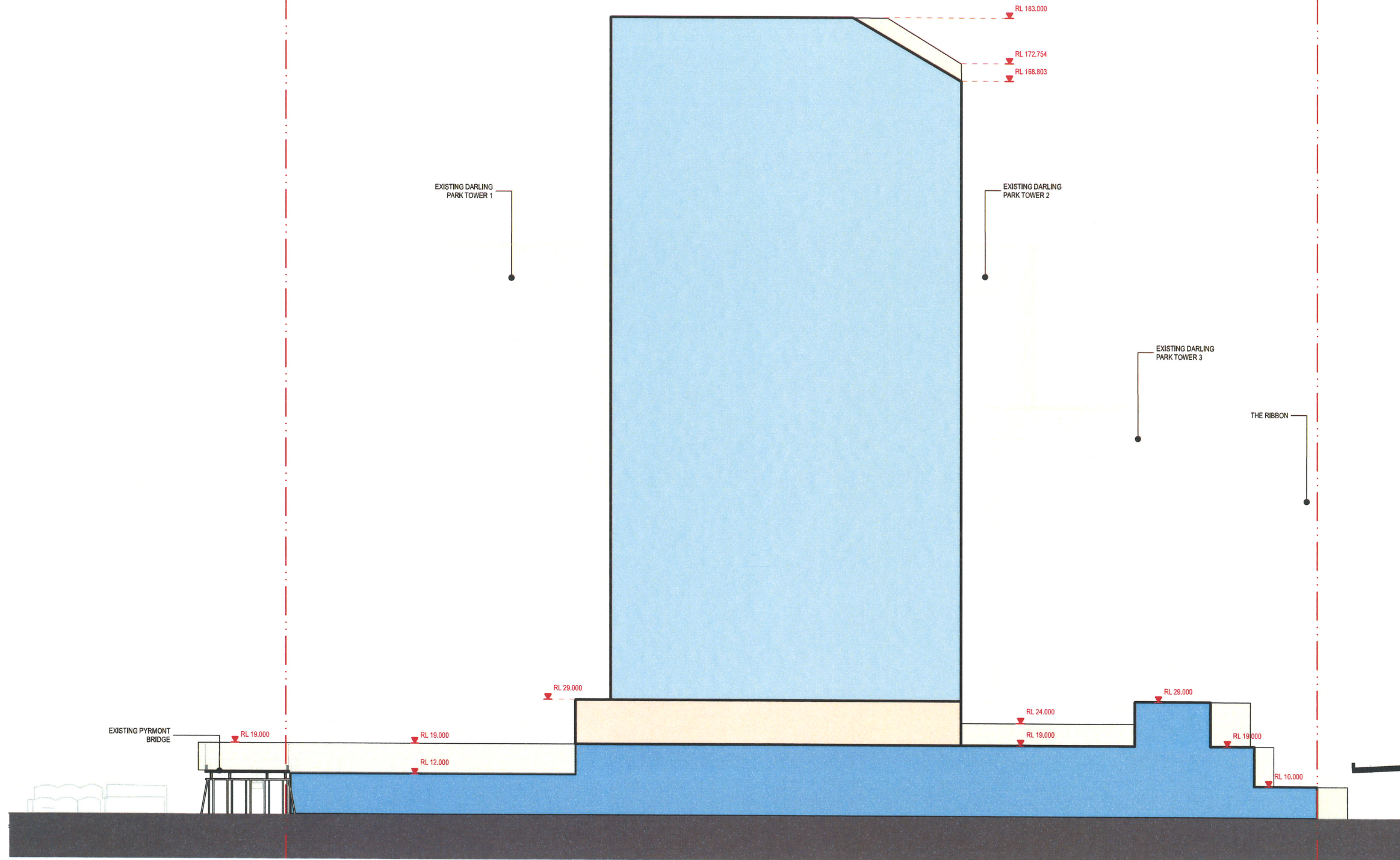
LEGEND:

-  TOWER
-  TOWER BASE
-  PODIUM
-  DECK



NOTES:

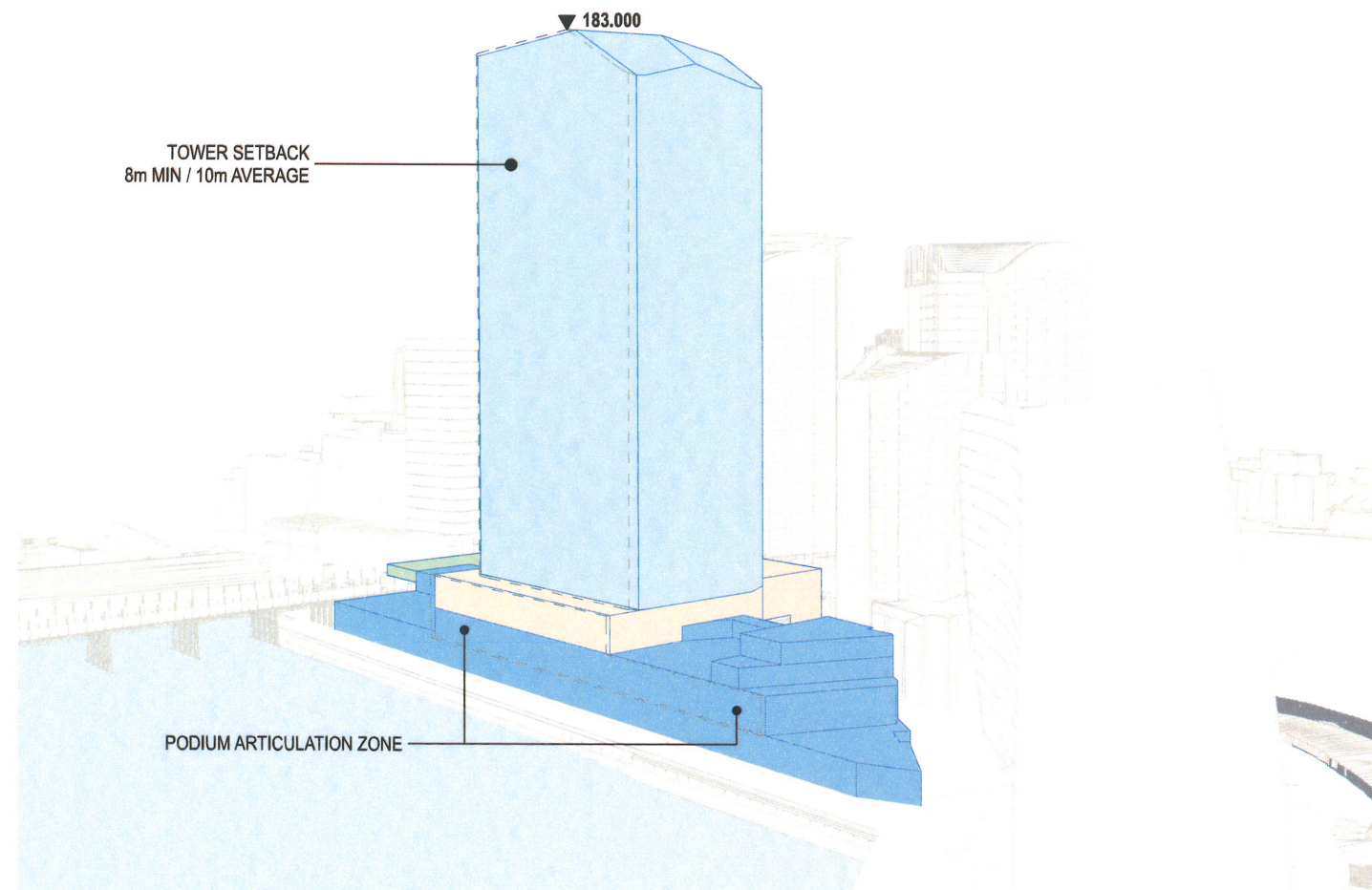
1. "the podium articulation zone may include architectural features / projections, balustrades, awnings and the like and shall not include any GFA and/or balconies".
2. "artworks, garden pavilions, kiosks and signage may extend beyond the building envelope where these components are within, and relate specifically to, the publicly accessible open space or the public domain".
3. "Service poles and antenna/aerials (and the like), balustrades and vegetation may extend beyond the building envelope".




STAGE 1 SSDA AMENDED CONCEPT PROPOSAL

LEGEND:

- TOWER
- TOWER BASE
- PODIUM
- DECK



Building Envelope- 3D View


New South Wales Government
Independent Planning Commission

Issued under the Environmental Planning and Assessment Act 1979

Approved Application No. SSD 7684

granted on the 13 May 2019

Signed [Signature]

Sheet No. 14 of 15

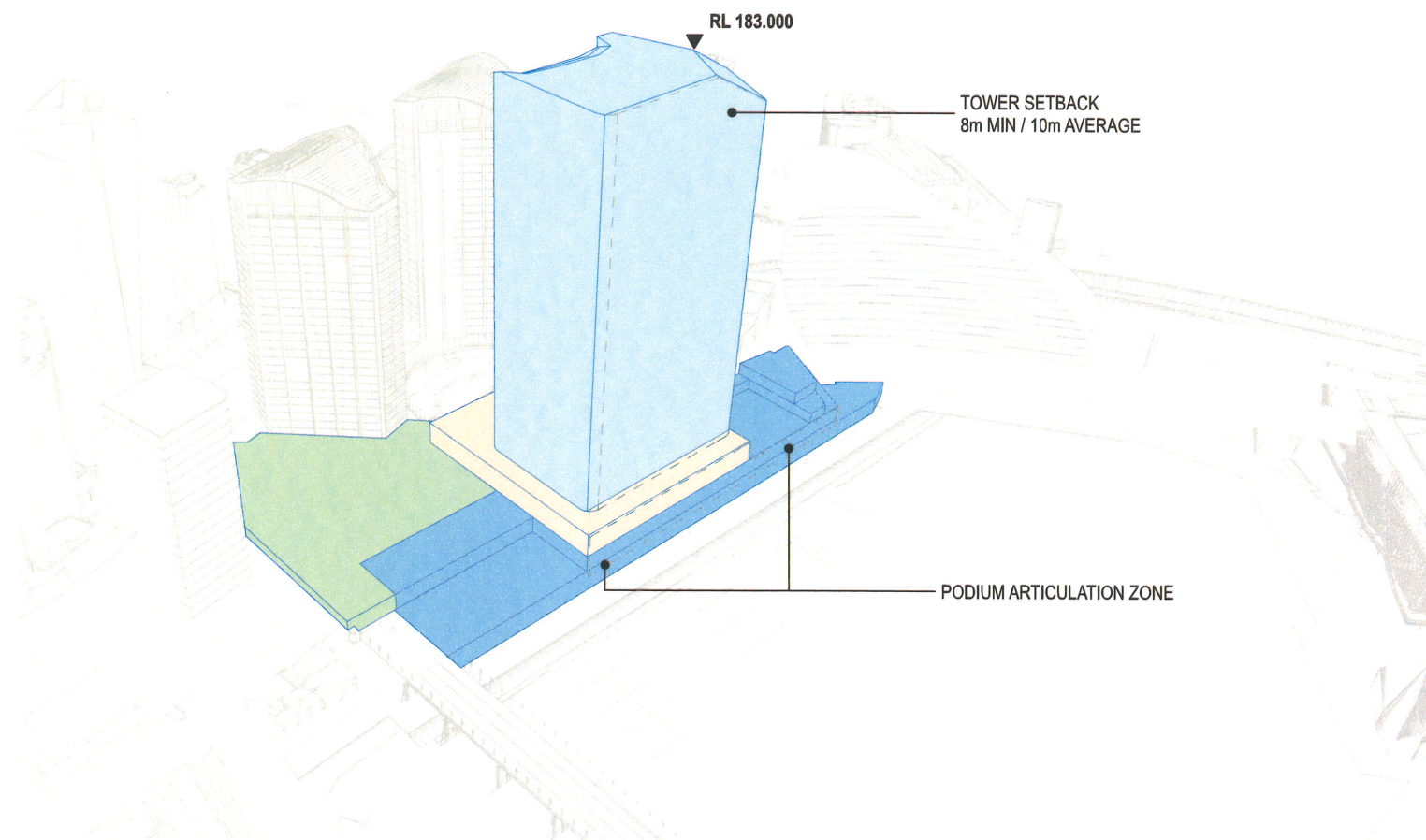
NOTES:

1. "the podium articulation zone may include architectural features / projections, balustrades, awnings and the like and shall not include any GFA and/or balconies".
2. "artworks, garden pavilions, kiosks and signage may extend beyond the building envelope where these components are within, and relate specifically to, the publicly accessible open space or the public domain".
3. "Service poles and antenna/aerials (and the like), balustrades and vegetation may extend beyond the building envelope".


STAGE 1 SSDA AMENDED CONCEPT PROPOSAL

LEGEND:

- TOWER
- TOWER BASE
- PODIUM
- DECK



Building Envelope-3D View 2


New South Wales Government
Independent Planning Commission
Issued under the Environmental Planning and Assessment Act 1979

Approved Application No. SSD 7684

granted on the 13 May 2019

Signed [Signature]

Sheet No. 15 of 15

NOTES:

1. "the podium articulation zone may include architectural features / projections, balustrades, awnings and the like and shall not include any GFA and/or balconies".
2. "artworks, garden pavilions, kiosks and signage may extend beyond the building envelope where these components are within, and relate specifically to, the publicly accessible open space or the public domain".
3. "Service poles and antenna/aerials (and the like), balustrades and vegetation may extend beyond the building envelope".