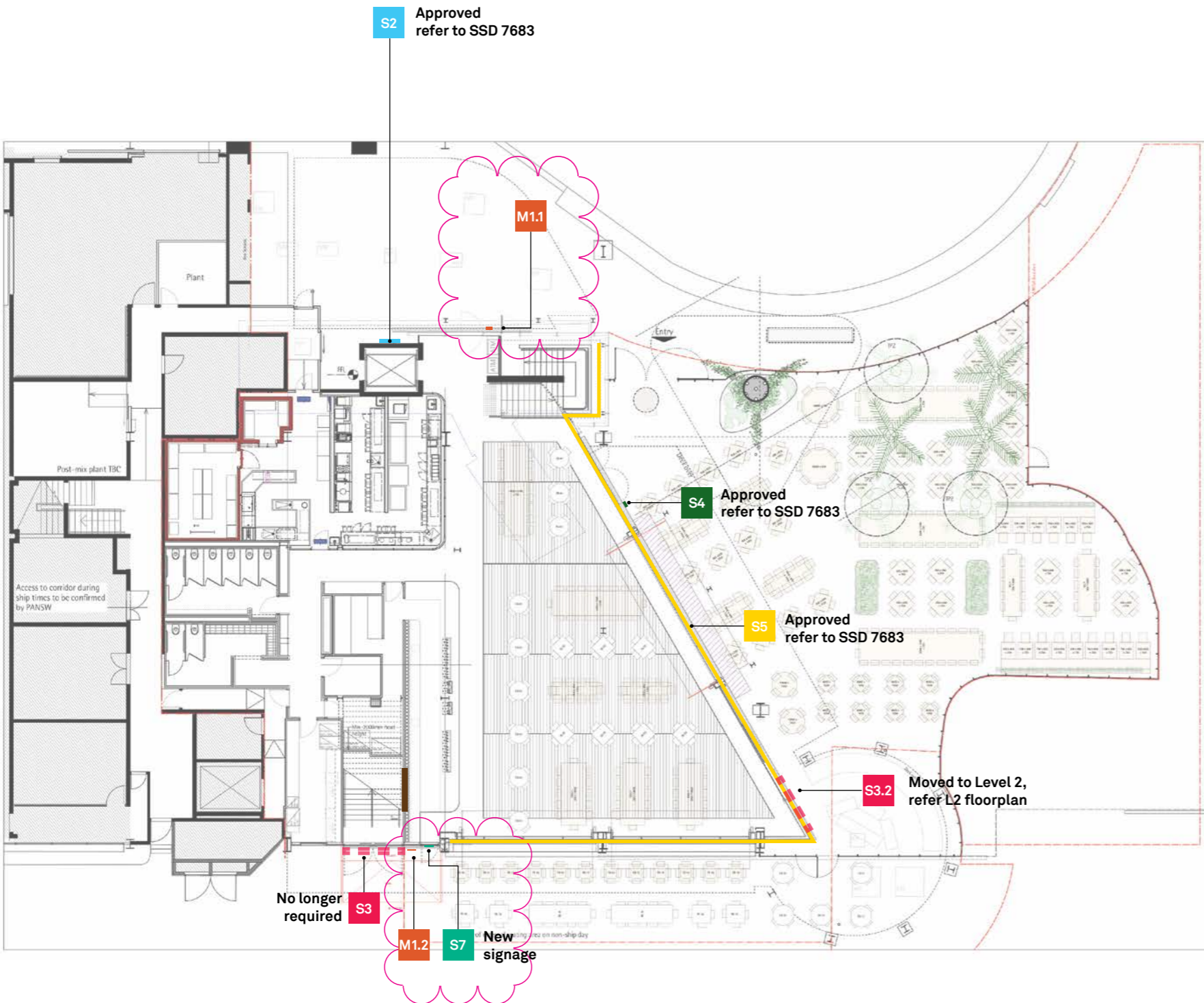


## Level 1 Floorplan



## Approved signage



**S2 James Squire Signature + Cross Shovels identification**  
Illuminated – to wall  
**Approved refer to SSD 7683**

**S3 James Squire Signature + Cross Shovels identification**  
non-illuminated – ground floor low level building spandrel  
**Approved refer to SSD 7683**

**S4 Licensee Information** (statutory requirement)  
on wall or glazing at main entry point  
**Approved refer to SSD 7683**

**S5** **Glazing compliance strip** (statutory requirement)  
on glazing  
**Approved refer to SSD 7683**

## Modifications

**S7 The Squire's Landing logo window vinyl**  
Non-illuminated – ground floor external door.  
New vinyl signage – as this door is being used by customers as an entry point

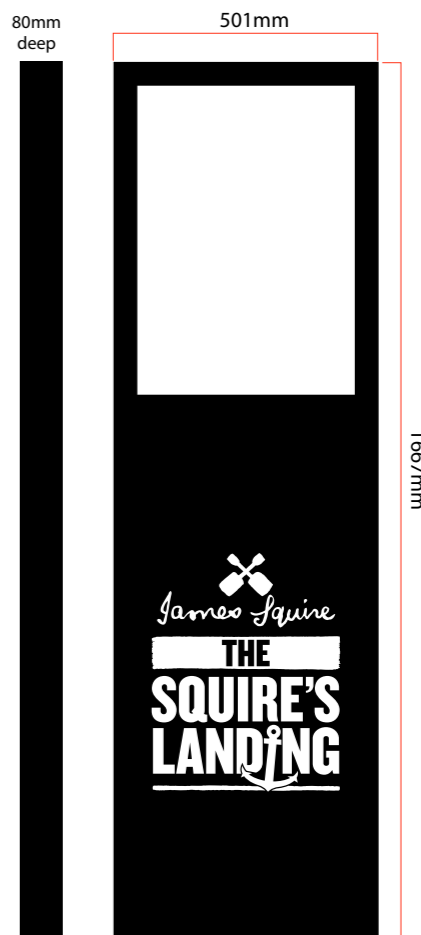
**S3.2 James Squire Signature + Cross Shovels identification**  
moved to Level 2, refer L2 floorplan



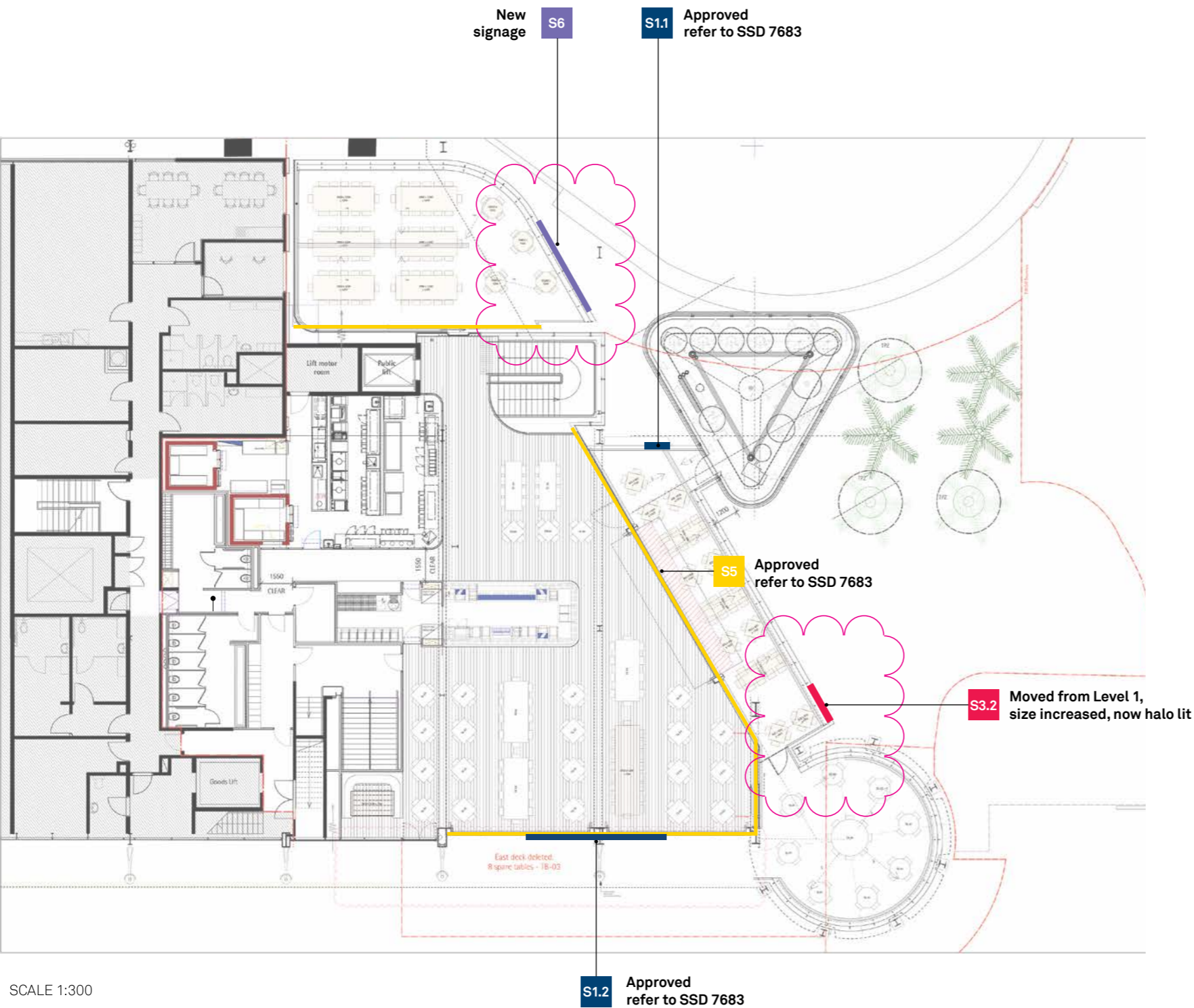
**M1 Menu Stand**  
Freestanding menu stand with illuminated logo and menu

### Modification

Two new menu stands see construction below



Level 2 Floorplan



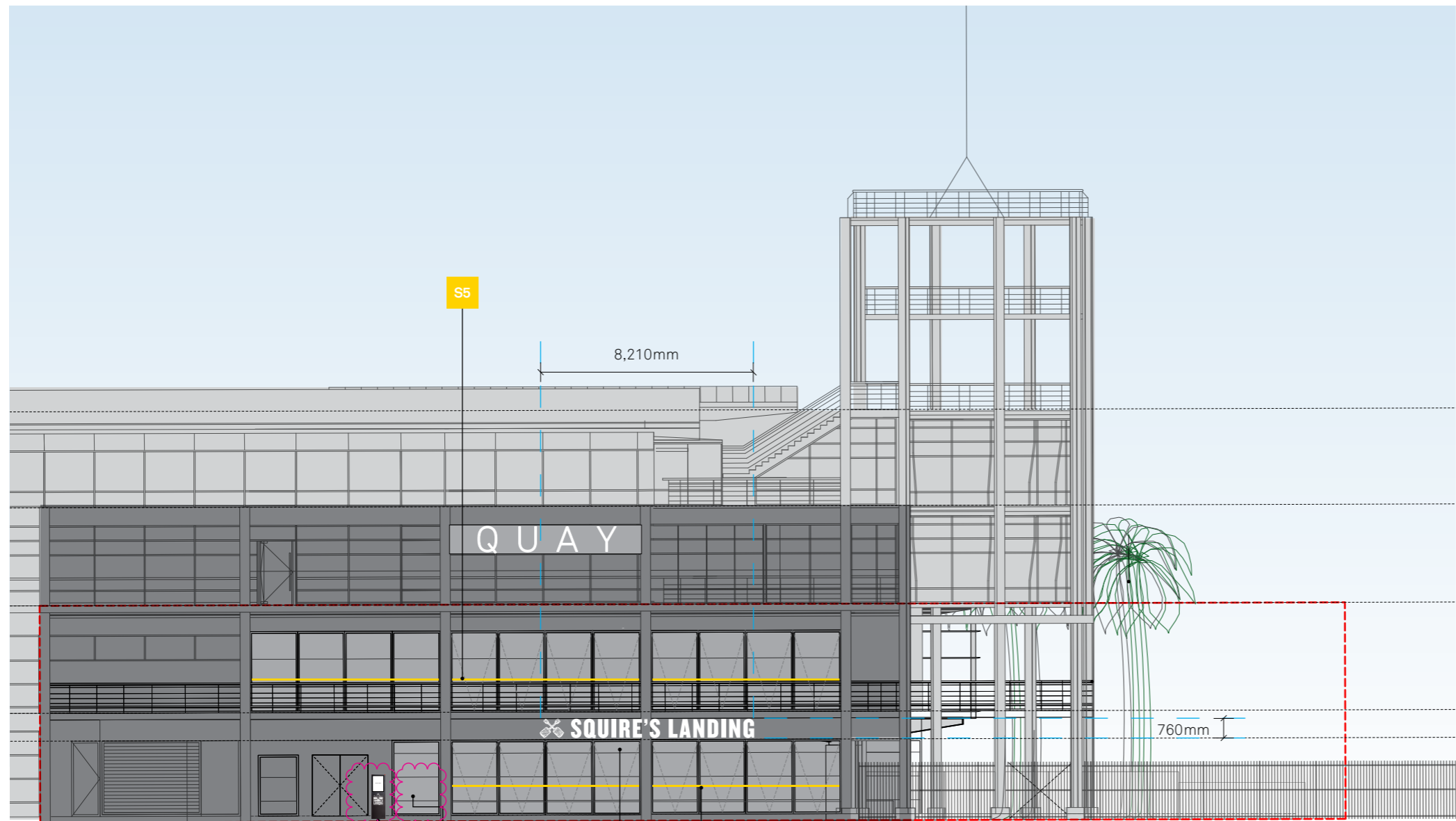
Approved signage

- S1.1 James Squire Signature + Cross Shovels identification**  
Non-illuminated – ground floor low level building spandrel  
Approved refer to SSD 7683
- S1.2 The Squire's Landing Identification**  
(linear logo) illuminated – building entrance high level  
Approved refer to SSD 7683
- S5 Glazing compliance strip** (statutory requirement)  
on glazing  
Approved refer to SSD 7683

Modifications

- S3.2 James Squire Signature + Cross Shovels identification**  
**S3.2:** relocation from ground floor low level building spandrel to Level 2 awning beam. Size increases from 1285 x 220mm to 2440x380mm. Sign now halo lit.
- S6 The Squire's Landing identification**  
New sign Level 2 balcony. Sign is illuminated.

East elevation



01 East Elevation  
Scale 1:200


M1.2

S7

S1.2

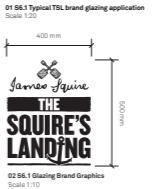
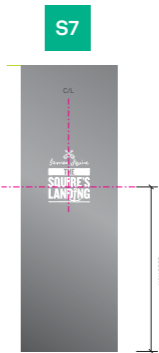
S5

Approved signage

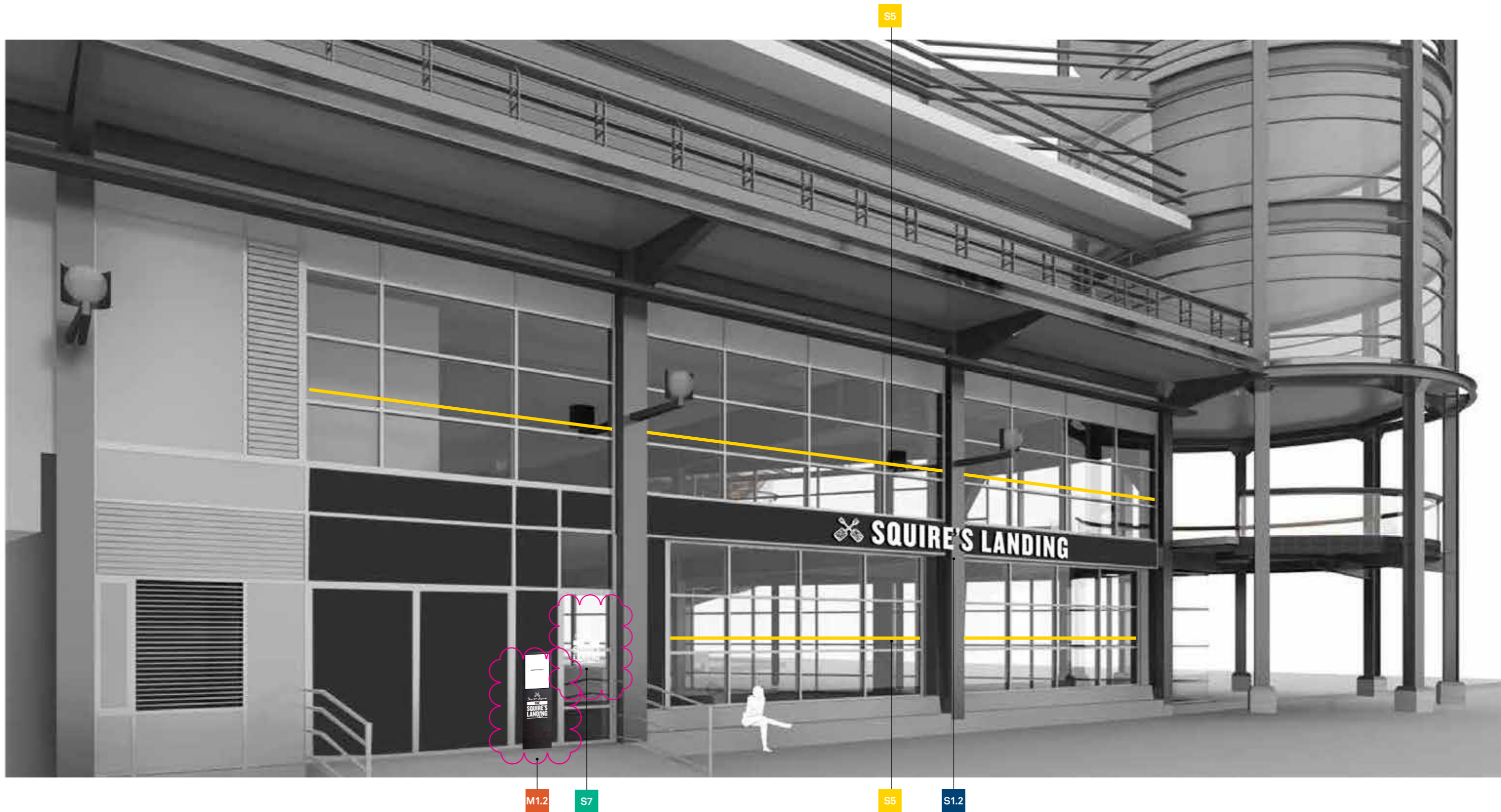
-  **S1.2 The Squire's Landing Identification**  
(linear logo) illuminated – building entrance high level  
Approved refer to SSD 7683
- S5** **Glazing compliance strip** (statutory requirement)  
on glazing  
Approved refer to SSD 7683

Modifications

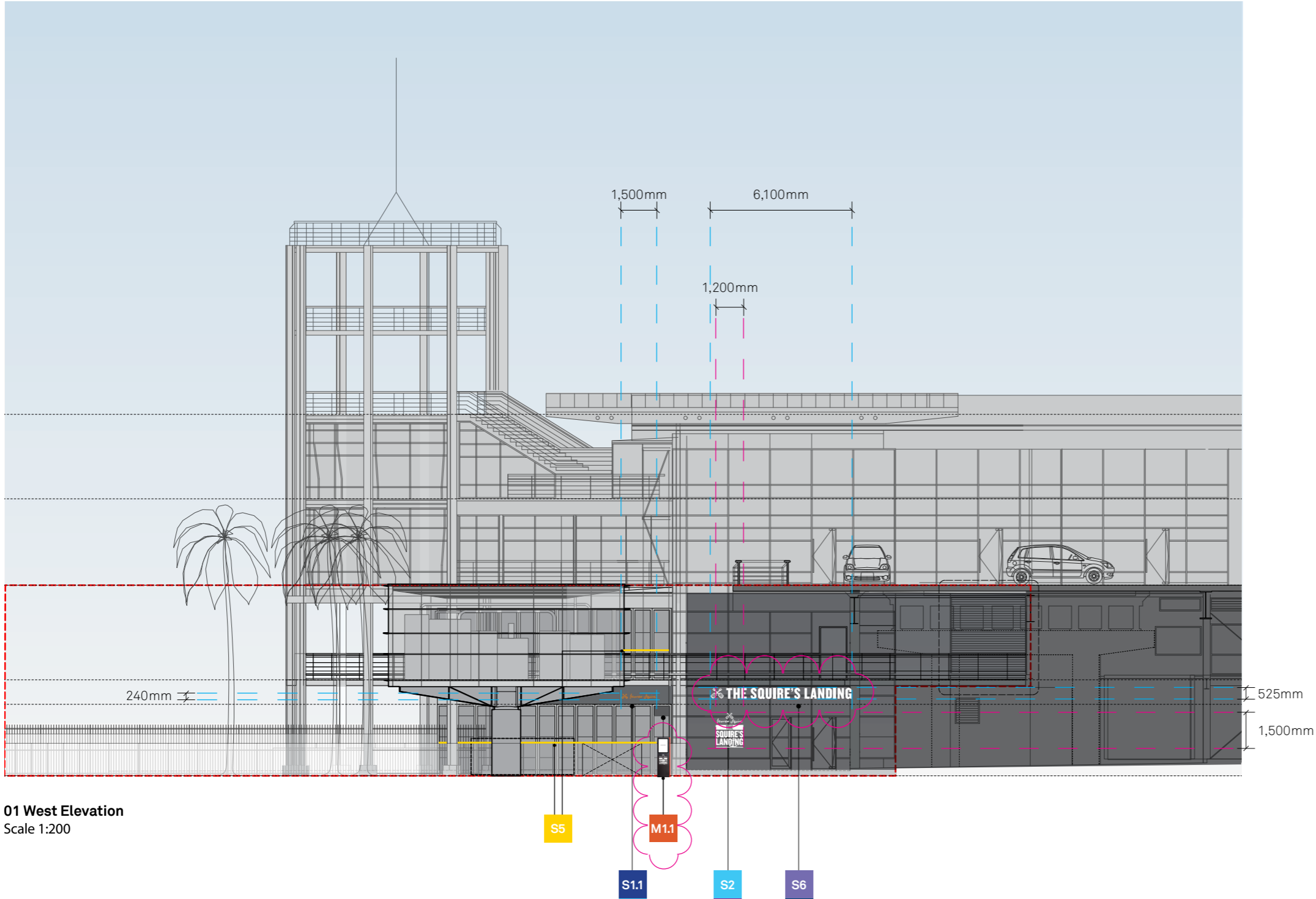
- S7** **The Squire's Landing logo window vinyl**  
Non-illuminated – ground floor external door.  
New vinyl signage – as this door is being used by customers  
as an entry point
-  **M1** **Menu Stand**  
Freestanding menu stand with illuminated logo and menu



Eastern View



West Elevation



Installed signage



S2

**James Squire Signature + Cross Shovels identification**  
Illuminated – to wall  
Approved refer to SSD 7683

S1.1

**James Squire Signature + Cross Shovels identification**  
Non-illuminated – ground floor low level building spandrel  
Approved refer to SSD 7683

S5

**Glazing compliance strip** (statutory requirement)  
on glazing  
Approved refer to SSD 7683

Modifications – New Signage



M1

**Menu Stand**  
Freestanding menu stand with illuminated logo and menu



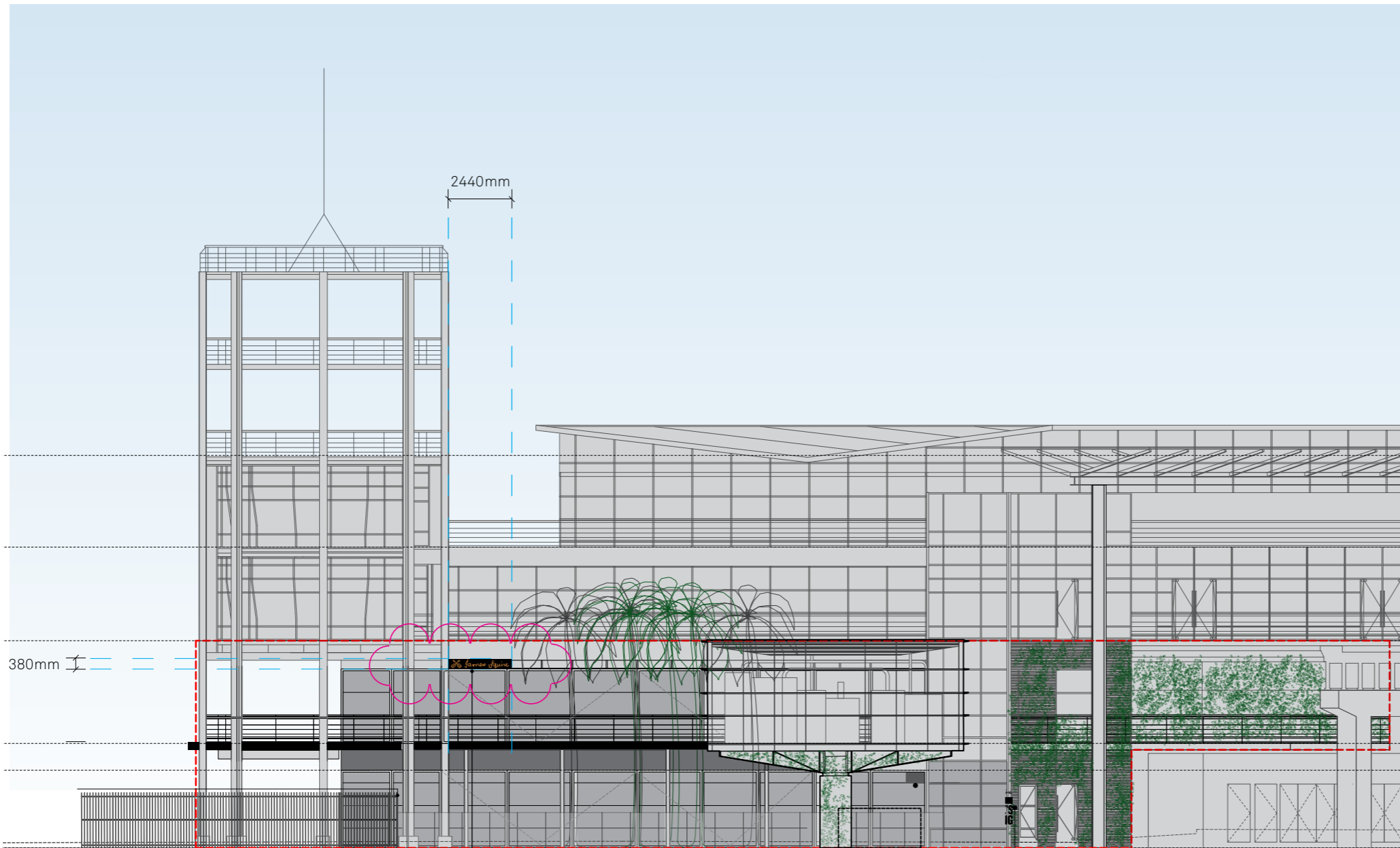
S6

**The Squire's Landing identification**  
New sign Level 2 balcony. Sign is illuminated.

West entrance



North elevation



01 North Elevation  
Scale 1:200

S3.2

S2

Acute angle  
only visible from  
this elevation

Approved signage



S2

**James Squire Signature + Cross Shovels identification**  
Illuminated – to wall  
Approved refer to SSD 7683

Modifications



S3.2

**James Squire Signature + Cross Shovels identification**  
**S3.2:** relocation from ground floor low level building spandrel to Level 2 awning beam. Size increases from 1285 x 220mm to 2440x380mm. Sign now halo lit.

Northern view

