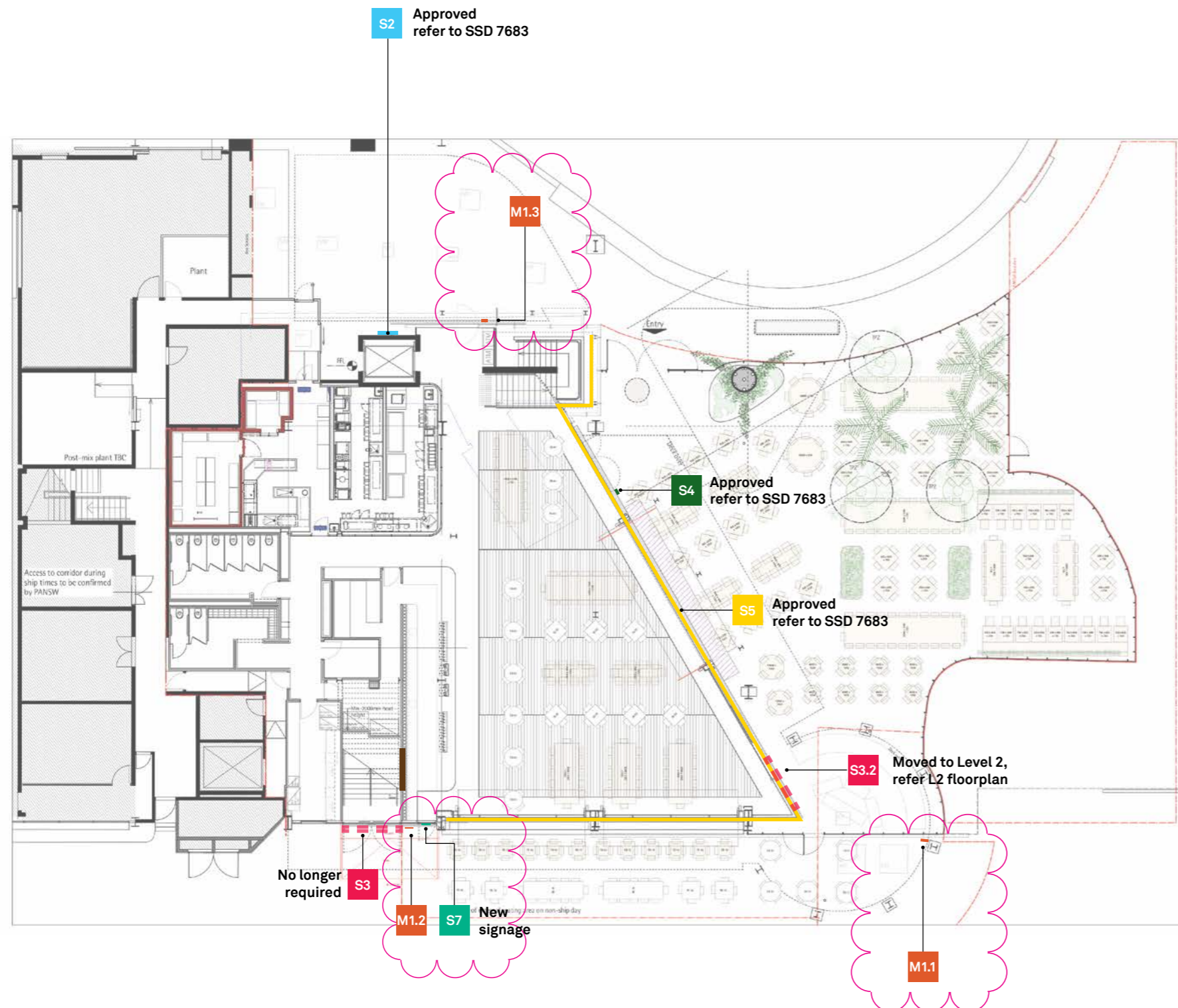


Level 1 Floorplan



Approved signage



S2 James Squire Signature + Cross Shovels identification
Illuminated – to wall
Approved refer to SSD 7683

S3 James Squire Signature + Cross Shovels identification
non-illuminated – ground floor low level building spandrel
Approved refer to SSD 7683

S4 Licensee Information (statutory requirement)
on wall or glazing at main entry point
Approved refer to SSD 7683

S5 **Glazing compliance strip** (statutory requirement)
on glazing
Approved refer to SSD 7683

Modifications

S7 The Squire's Landing logo window vinyl
Non-illuminated – ground floor external door.
New vinyl signage – as this door is being used by customers as an entry point

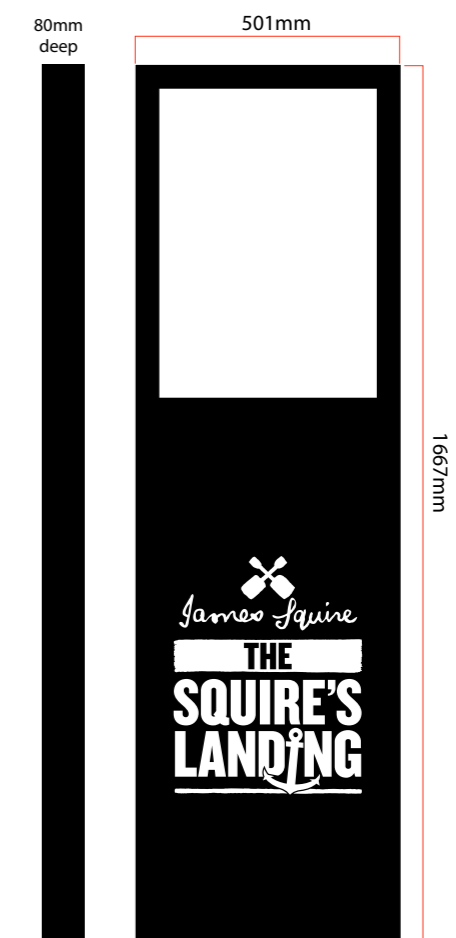
S3.2 James Squire Signature + Cross Shovels identification
moved to Level 2, refer L2 floorplan



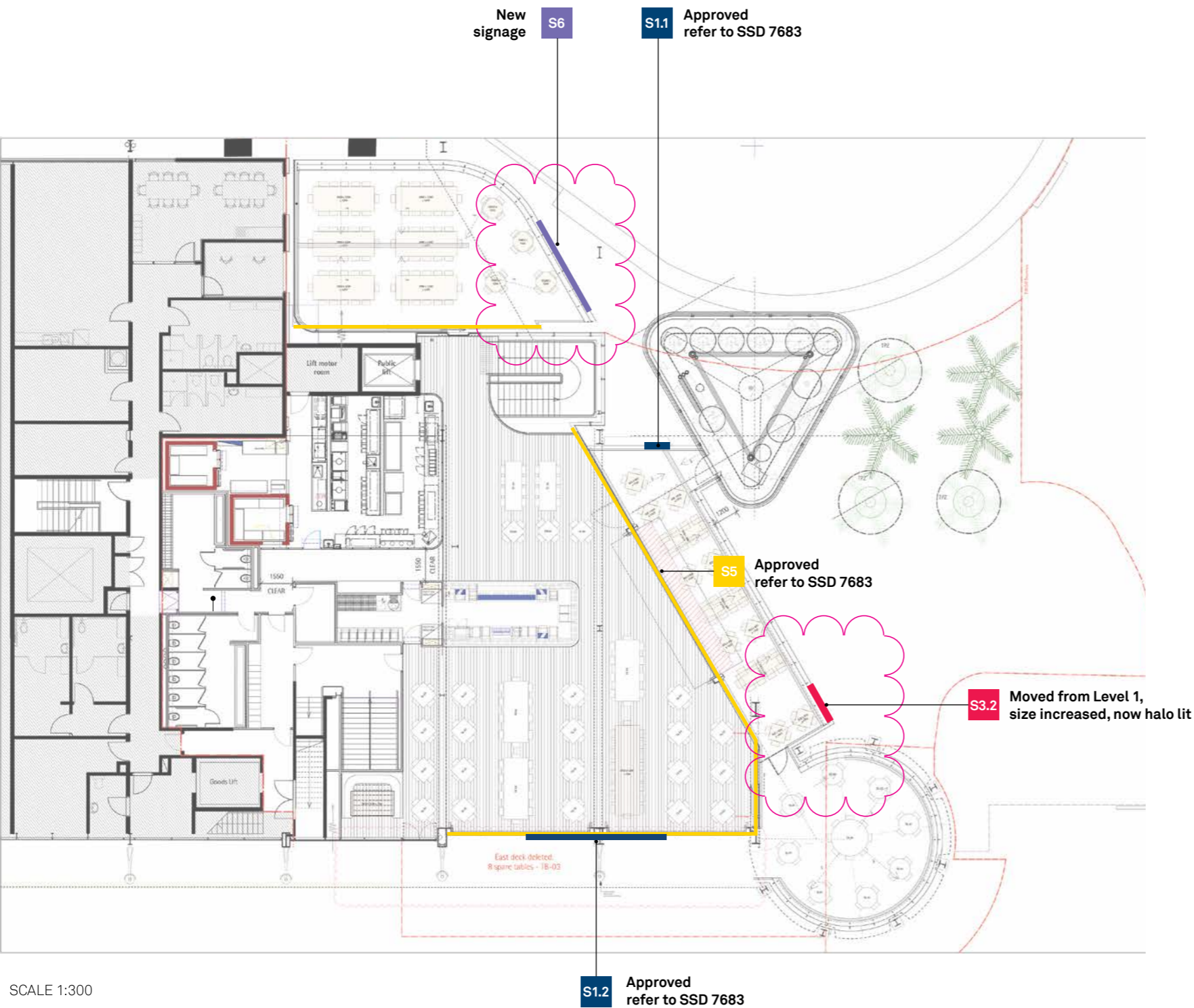
Menu Stand
Freestanding menu stand with illuminated logo and menu

Modification

Five new menu stands see construction below



Level 2 Floorplan



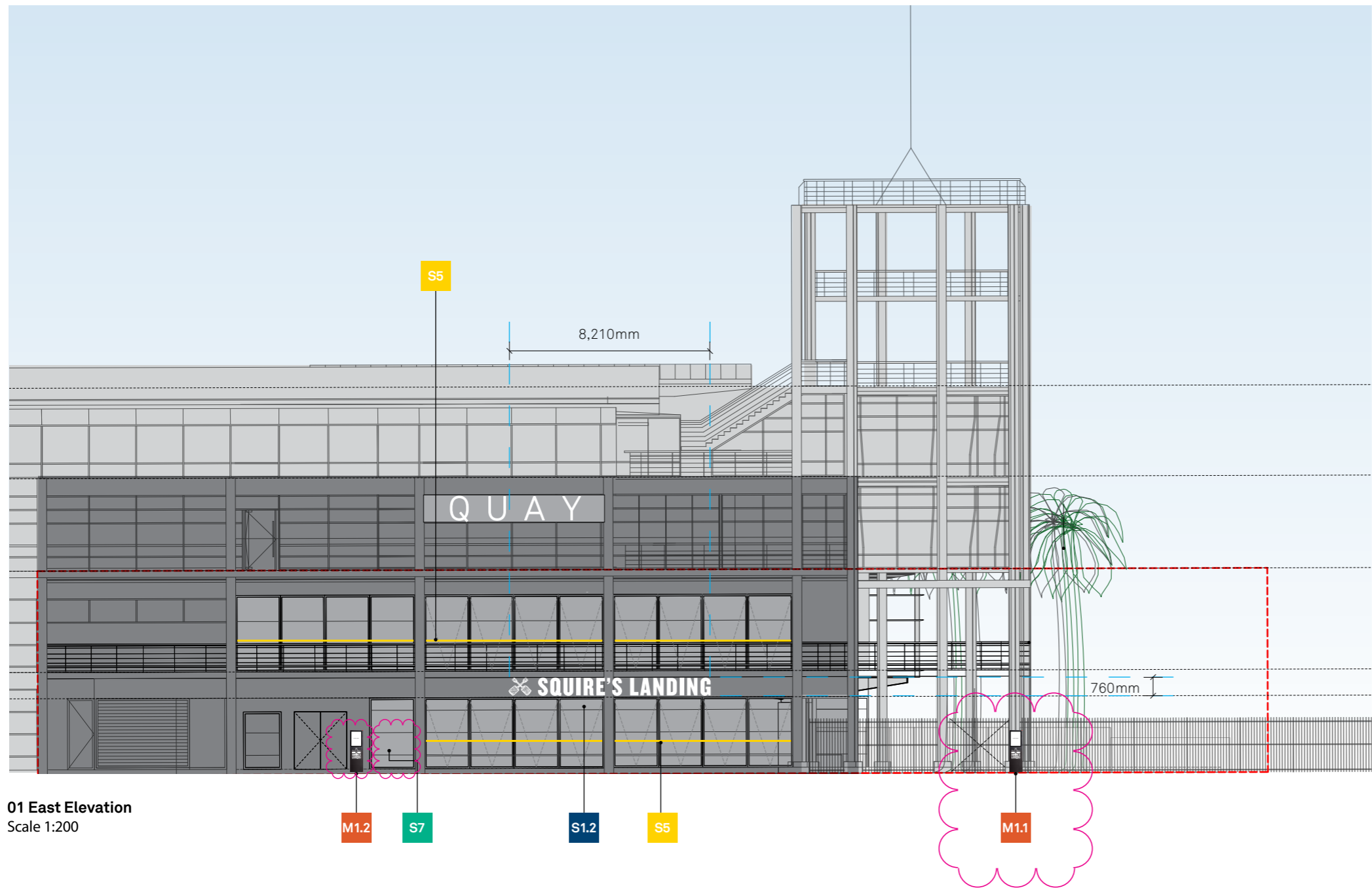
Approved signage

- S1.1 James Squire Signature + Cross Shovels identification**
Non-illuminated – ground floor low level building spandrel
Approved refer to SSD 7683
- S1.2 The Squire's Landing Identification**
(linear logo) illuminated – building entrance high level
Approved refer to SSD 7683
- S5 Glazing compliance strip** (statutory requirement)
on glazing
Approved refer to SSD 7683


Modifications

- S3.2 James Squire Signature + Cross Shovels identification**
S3.2: relocation from ground floor low level building spandrel to Level 2 awning beam. Size increases from 1285 x 220mm to 2440x380mm. Sign now halo lit.
- S6 The Squire's Landing identification**
New sign Level 2 balcony. Sign is illuminated.


East elevation



Approved signage

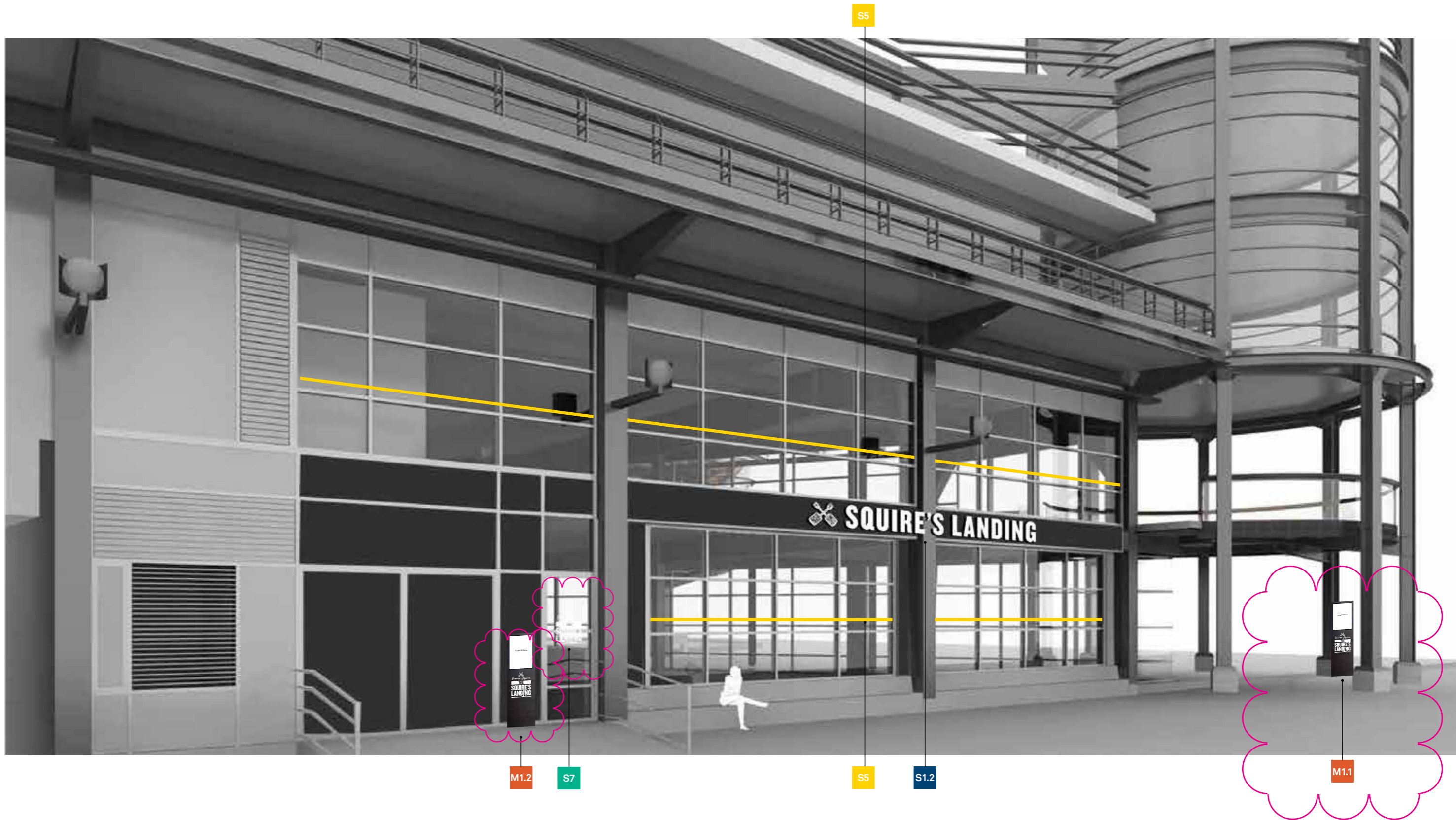
-  **S1.2 The Squire's Landing Identification**
(linear logo) illuminated – building entrance high level
Approved refer to SSD 7683
- S5** **Glazing compliance strip** (statutory requirement)
on glazing
Approved refer to SSD 7683

Modifications

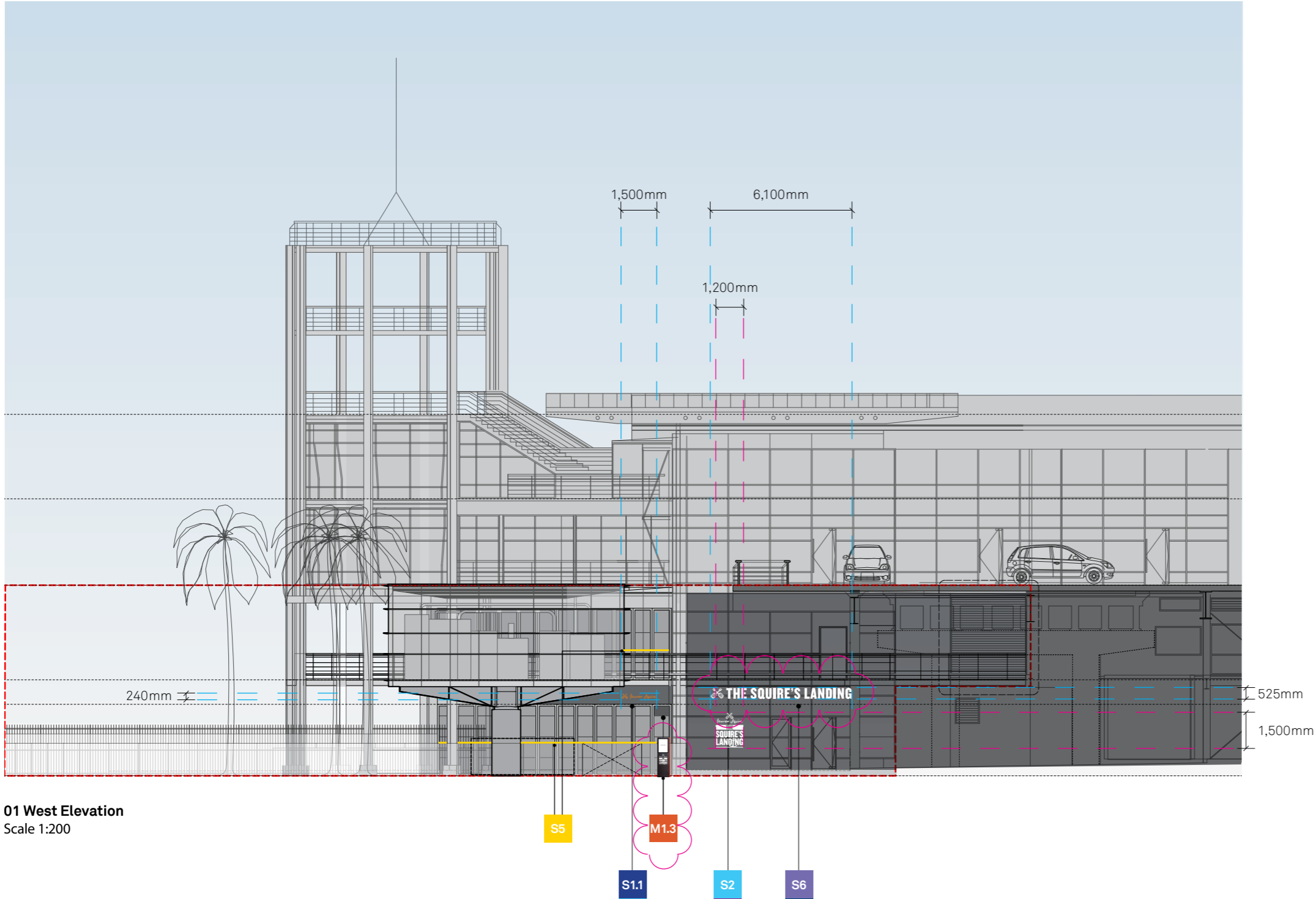
- S7** **The Squire's Landing logo window vinyl**
Non-illuminated – ground floor external door.
New vinyl signage – as this door is being used by customers
as an entry point
-  **M1** **Menu Stand**
Freestanding menu stand with illuminated logo and menu



Eastern View






West Elevation





01 West Elevation
Scale 1:200

Installed signage

-  **S2** James Squire Signature + Cross Shovels identification
Illuminated – to wall
Approved refer to SSD 7683
-  **S1.1** James Squire Signature + Cross Shovels identification
Non-illuminated – ground floor low level building spandrel
Approved refer to SSD 7683
-  **S5** Glazing compliance strip (statutory requirement)
on glazing
Approved refer to SSD 7683

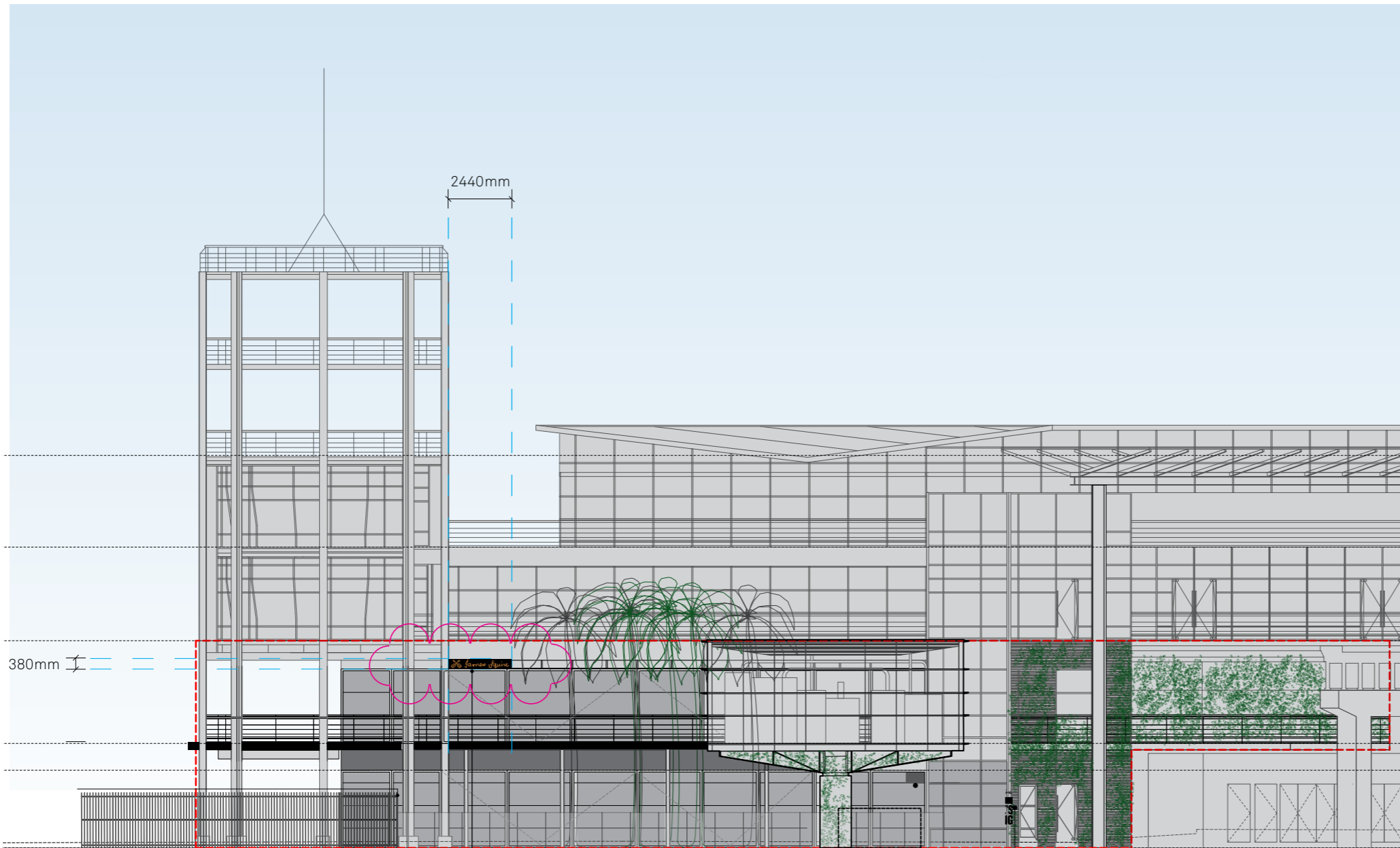
Modifications – New Signage

-  **M1** Menu Stand
Freestanding menu stand with illuminated logo and menu
-  **S6** The Squire's Landing identification
New sign Level 2 balcony. Sign is illuminated.

West entrance



North elevation



01 North Elevation
Scale 1:200

S3.2

S2
Acute angle
only visible from
this elevation

Approved signage



S2

James Squire Signature + Cross Shovels identification
Illuminated – to wall
Approved refer to SSD 7683

Modifications



S3.2

James Squire Signature + Cross Shovels identification
S3.2: relocation from ground floor low level building spandrel to Level 2 awning beam. Size increases from 1285 x 220mm to 2440x380mm. Sign now halo lit.

Northern view

