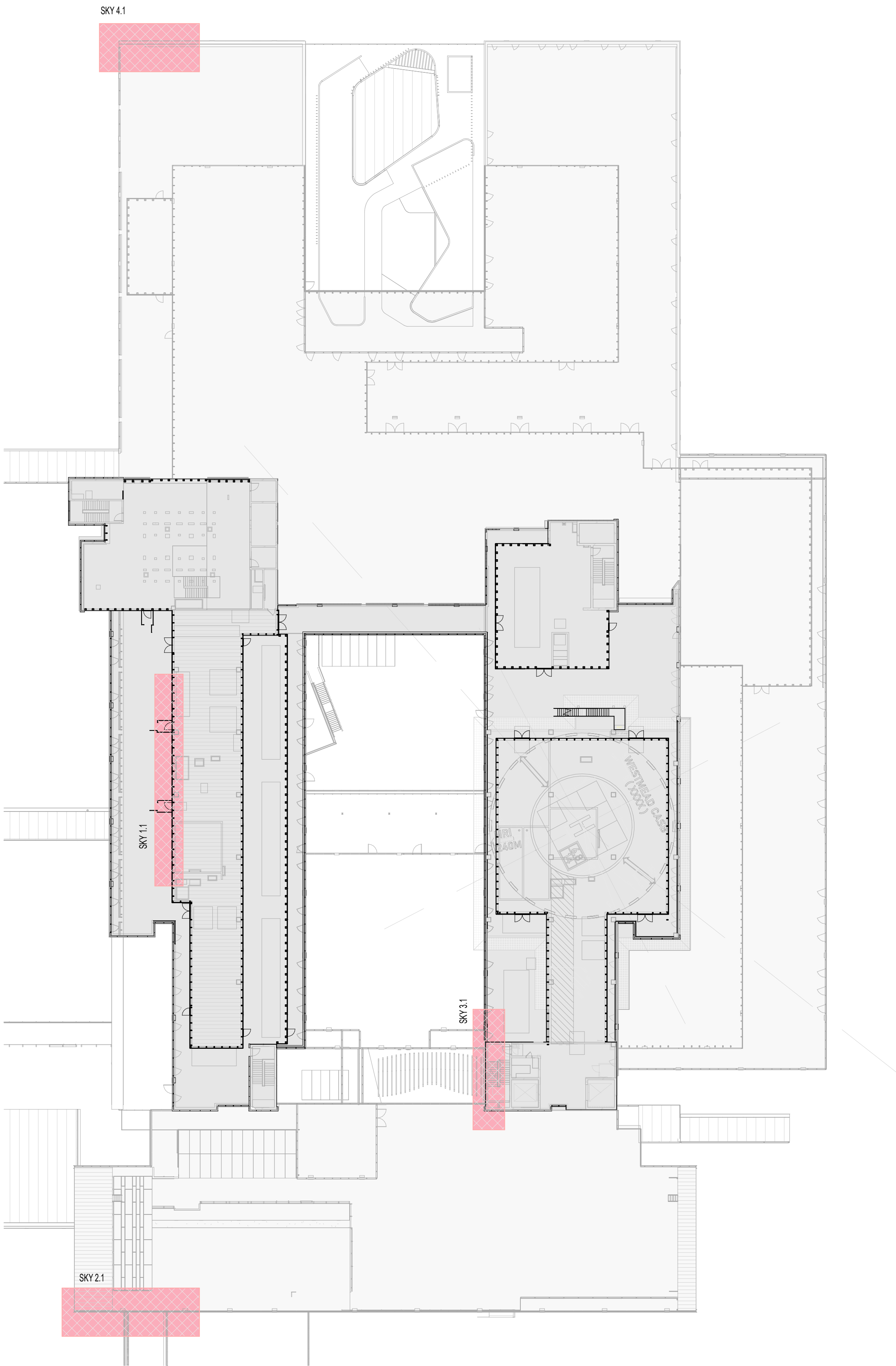
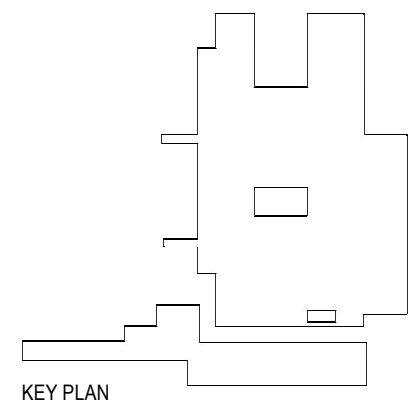




3 LOCATION PLAN
1:1000



2 SIGNAGE KEY PLAN
1:400



0 250 1000 2000
1:500mm



Level 1, 150 Walker Street, North Sydney NSW 2060, Australia
+61 2 9956 2666 | info@hdr.com.au
The HDR Group (Group NSW) Pty Limited as trustee for
The HDR Group Trust (ABN 58 880 304 910) trading as HDR.



CLIENT:
Level 14, 77 Pacific Highway
North Sydney NSW 2060
P: (02) 9978 5427
F: (02) 8904 1377
www.hinfra.health.nsw.gov.au



Health
Infrastructure

PROJECT MANAGER:
One International Towers Sydney
Watermans Quay
Barangaroo NSW 2000
P: (02) 6268 0000
F: (02) 6268 9999
www.pwc.com.au



CONTRACTOR:
Level 22, 135 King Street
Sydney NSW 2000
P: (02) 9322 2400
F: (02) 9322 2001
www.multiplex.global

MULTIPLEX

REV	DATE	DESCRIPTION	DWN	CH
1	03/04/19	ISSUED FOR DA	AM	AB
2	15/04/19	DA UPDATE FPR ISSUE	AM	AB

Health Infrastructure
232186
Westmead Hospital
Hawkesbury Rd, Westmead, NSW, 2145

Sheet Name
SIGNAGE LOCATION PLAN

Scale
As indicated@ A1

Sheet Number
CASB-HDR-AR-SL-400050

Revision
2

Project Status

THIS DOCUMENT IS THE COPYRIGHT OF HDR.
ALL INFORMATION ILLUSTRATED ON THIS DOCUMENT IS TO BE CHECKED AND VERIFIED ON SITE. IN THE
EVENT OF DISCREPANCIES REFER TO ARCHITECT PRIOR TO COMMENCEMENT OF THE WORK. DO NOT
SCALE DRAWINGS MANUALLY OR ELECTRONICALLY.



Planning,
Industry &
Environment

Issued under the Environmental Planning and Assessment Act 1979

Approved Section: 4.55(1A) Application No: SSD-7642-Mod-3

Granted on the: 30 Aug 2019 Signed:

David G

Sheet No: 1 of 4



Planning,
Industry &
Environment

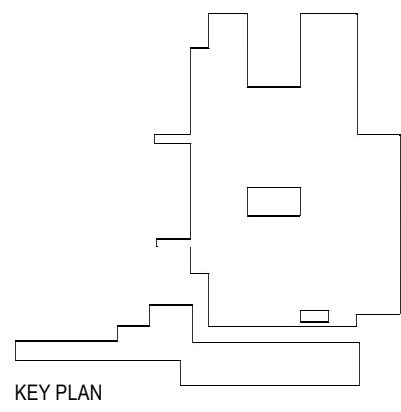
Issued under the Environmental Planning and Assessment Act 1979

Approved Section: 4.55(1A) Application No: SSD-7642-Mod-3

Granted on the: 30 Aug 2019 Signed:

David G

Sheet No: 2 of 4



0 250 1000 2000
1:50mm



Level 1, 150 Waterloo Street, North Sydney NSW 2060, Australia
+61 2 9596 2666 | info@hdr.com.au
The HDR Group (Group NSW) Pty Limited as trustee for
The HDR Group Trust (ABN 58 880 304 910) trading as HDR.

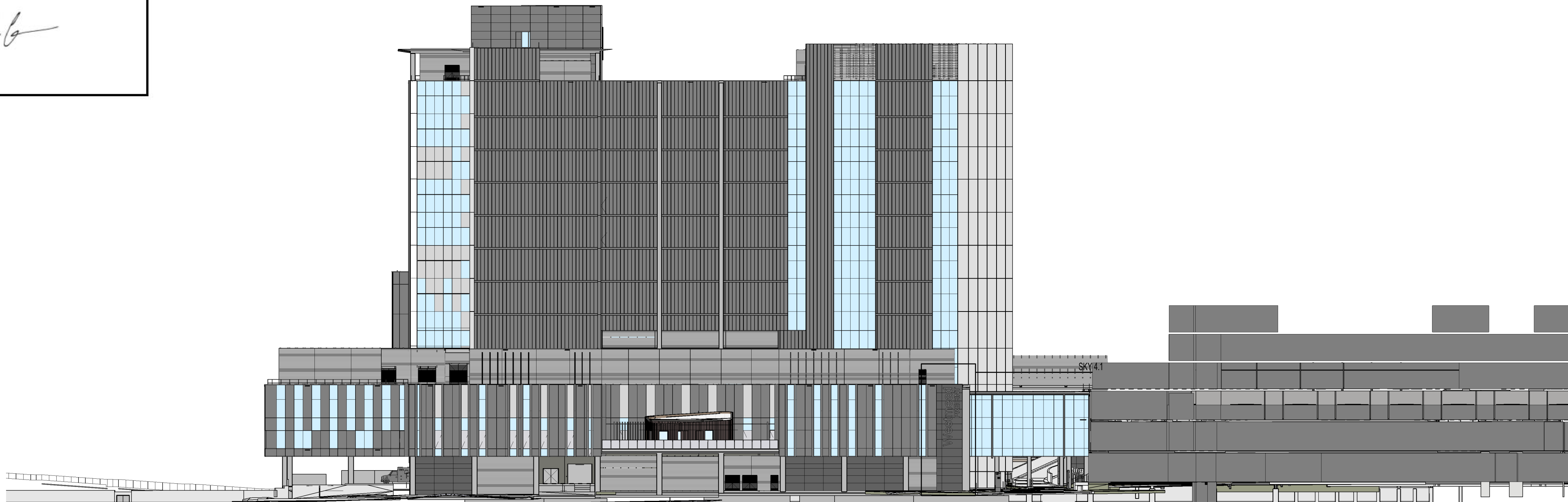


CLIENT:
Level 14, 77 Pacific Highway
North Sydney NSW 2060

P: (02) 9978 5427
F: (02) 8904 1377
www.hinfra.health.nsw.gov.au

PROJECT MANAGER:
One International Towers Sydney
Watermans Quay
Barangaroo NSW 2000
P: (02) 6268 0000
F: (02) 6268 9999
www.pwc.com.au

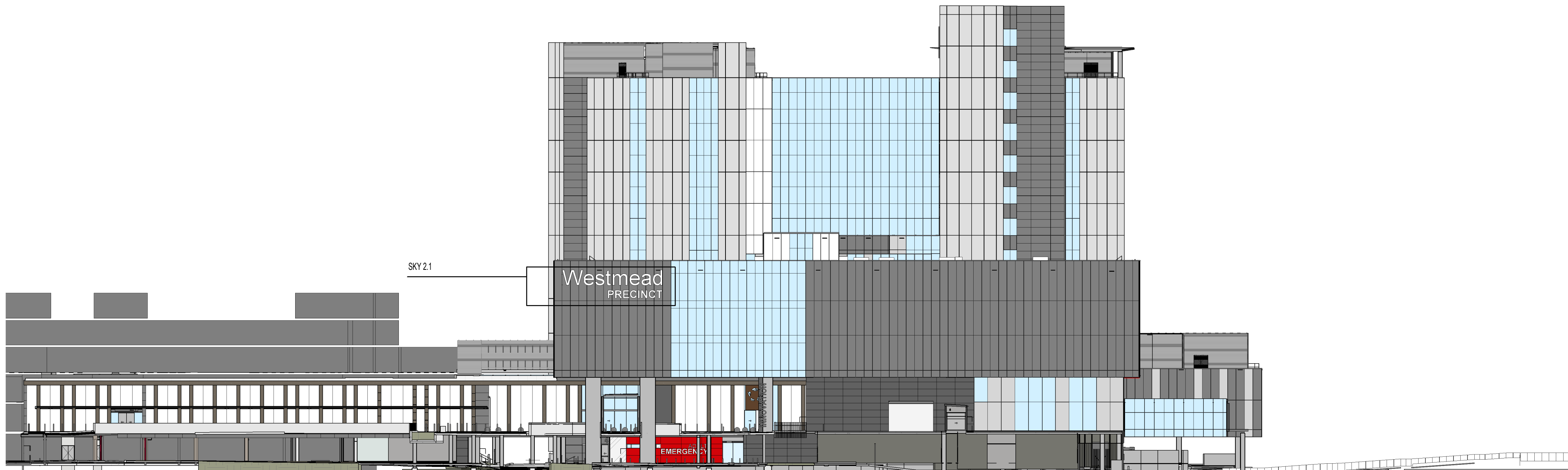
CONTRACTOR:
Level 22, 135 King Street
Sydney NSW 2000
P: (02) 9322 2400
F: (02) 9322 2001
www.multiplex.global



1

SIGNAGE - North-West

1 : 400



2

SIGNAGE - South-East

1 : 400

REV	DATE	DESCRIPTION	DWN	CH
1	03/04/19	ISSUED FOR DA	AM	AB
2	27/05/19	UPDATED FOR S66 APPLICATION	CH	AB

Health Infrastructure
232186
Westmead Hospital
Hawkesbury Rd, Westmead, NSW, 2145

Sheet Name
SIGNAGE LOCATION ELEVATIONS
SHEET 1

Scale
1 : 400@ A1
Sheet Number
CASB-HDR-AR-SL-400051
Project Status
Revision
2

THIS DOCUMENT IS THE COPYRIGHT OF HDR.
ALL INFORMATION ILLUSTRATED ON THIS DOCUMENT IS TO BE CHECKED AND VERIFIED ON SITE. IN THE
EVENT OF DISCREPANCIES REFER TO ARCHITECT PRIOR TO COMMENCEMENT OF THE WORK. DO NOT
SCALE DRAWINGS MANUALLY OR ELECTRONICALLY.



Planning,
Industry &
Environment

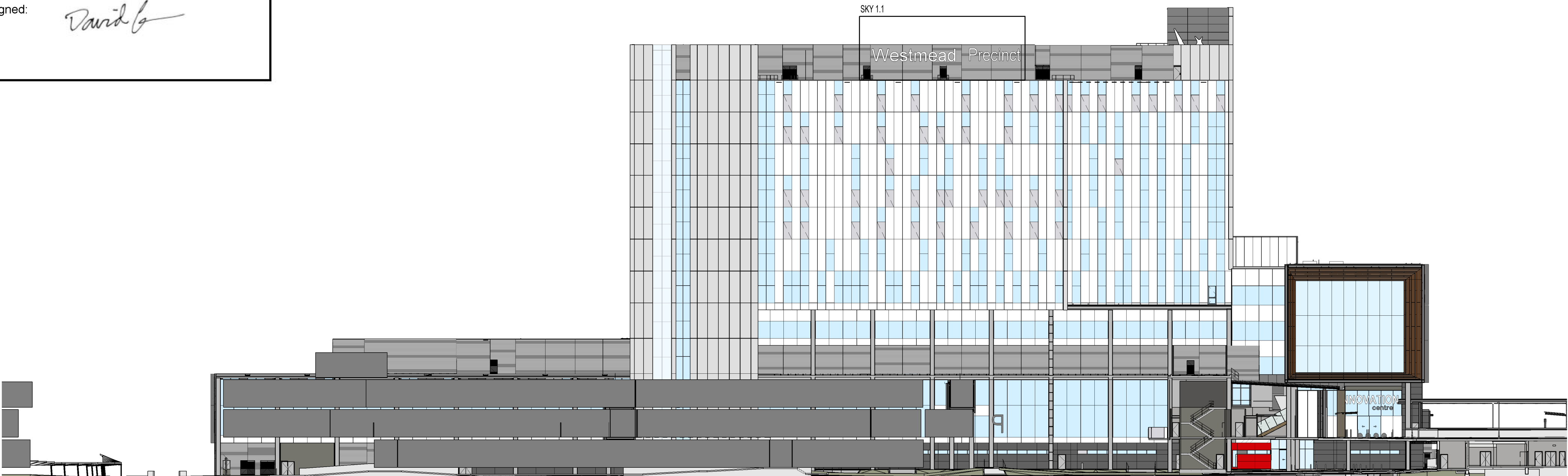
Issued under the Environmental Planning and Assessment Act 1979

Approved Section: 4.55(1A) Application No: SSD-7642-Mod-3

Granted on the: 30 Aug 2019 Signed:

David G

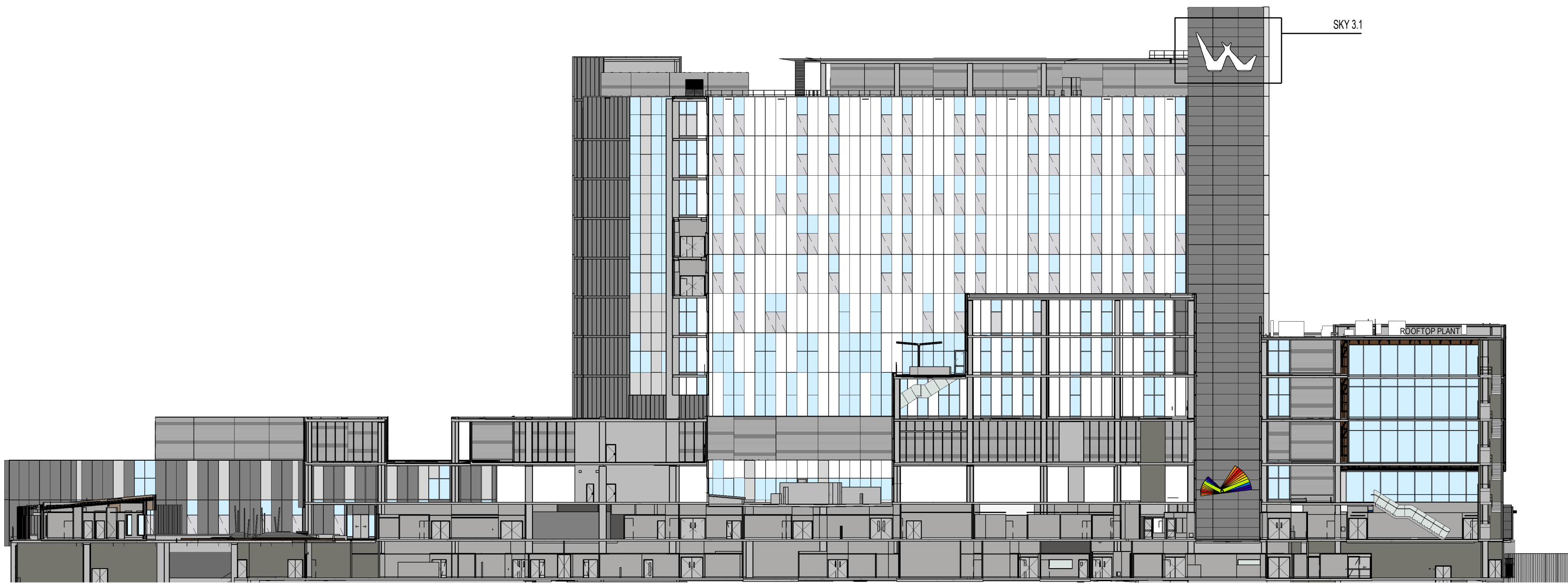
Sheet No: 3 of 4



1

SIGNAGE - South-West

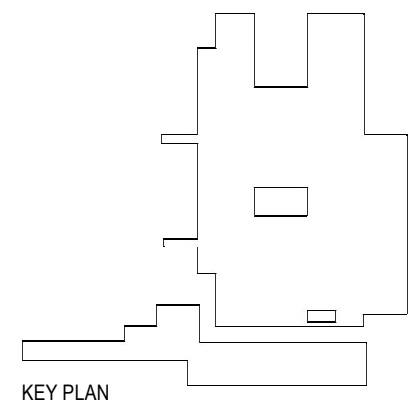
1:400



2

SIGNAGE - LARGE COURTYARD - EAST

1:400



0 250 1000 2000
1:50mm



Level 1, 150 Waterloo Street, North Sydney NSW 2060, Australia
+61 2 9596 2666 | hdr.com.au
The HDR Group (Group NSW) Pty Limited as trustee for
The HDR Group Trust (ABN 58 880 304 910) trading as HDR.

Westmead Redevelopment
Building health. Transforming lives.

CLIENT:
Level 14, 77 Pacific Highway
North Sydney NSW 2060
P: (02) 9978 5427
F: (02) 8904 1377
www.hinfra.health.nsw.gov.au



**Health
Infrastructure**

PROJECT MANAGER:
One International Towers Sydney
Watermans Quay
Barangaroo NSW 2000
P: (02) 6268 0000
F: (02) 6268 9999
www.pwc.com.au



CONTRACTOR:
Level 22, 135 King Street
Sydney NSW 2000
P: (02) 9322 2400
F: (02) 9322 2001
www.multiplex.global

MULTIPLEX

REV	DATE	DESCRIPTION	DWN	CH
1	27/03/19	UPDATED FOR S86 APPLICATION	CH	AB

**Health Infrastructure
232186
Westmead Hospital
Hawkesbury Rd, Westmead, NSW, 2145**

Sheet Name
**SIGNAGE LOCATION ELEVATIONS
SHEET 2**

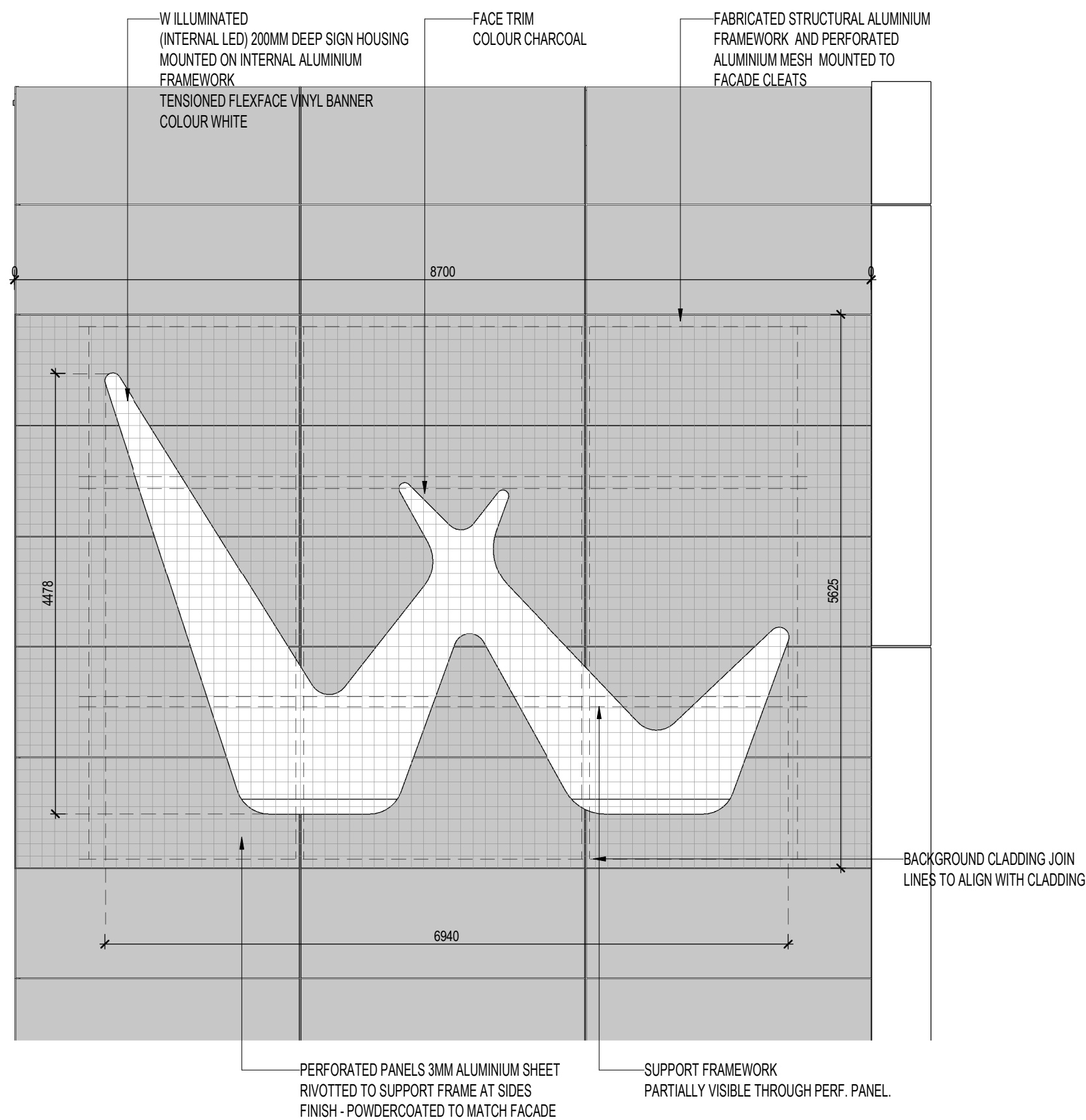
Scale
1 : 400@ A1

Sheet Number
CASB-HDR-AR-SL-400052

Project Status

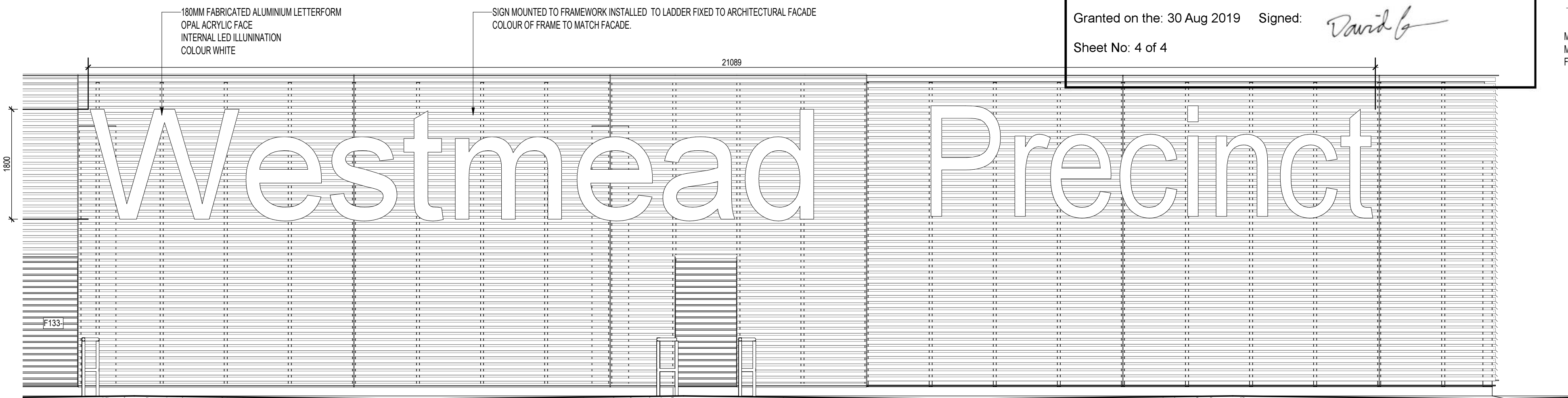
Revision
1

THIS DOCUMENT IS THE COPYRIGHT OF HDR.
ALL INFORMATION ILLUSTRATED ON THIS DOCUMENT IS TO BE CHECKED AND VERIFIED ON SITE. IN THE
EVENT OF DISCREPANCIES REFER TO ARCHITECT PRIOR TO COMMENCEMENT OF THE WORK. DO NOT
SCALE DRAWINGS MANUALLY OR ELECTRONICALLY.



3 SKY 3.1 BUILDING IDENTIFICATION

1:50



1 SKY 1.1 BUILDING IDENTIFICATION

1:50

SKY 1.1 BUILDING IDENTIFICATION

DESIGN INTENT

ILLUMINATED LETTERS

FABRICATED ALUMINIUM LETTERFORM
INTERNAL FRAMEWORK
TRIM FINISH - POWDERCOATED ALUMINIUM
COLOUR - CHARCOAL

OPAL ACRYLIC FACE
INTERNAL LED ILLUMINATION
COLOUR WHITE
ACCESS VIA FACE REMOVAL

STRUCTURAL MOUNTING FRAME INSTALLED TO LADDER
FRAME MOUNTED TO FACADE
FRAMEWORK TO MATCH CLADDING

ALL FIXINGS TO BE CONCEALED

SKY 2.1 BUILDING IDENTIFICATION

DESIGN INTENT

ILLUMINATED LETTERS

FABRICATED ALUMINIUM LETTERFORMS
TRANSLUCENT OPAL ACRYLIC FACE
REMOVABLE FACE TRIM
TRIM FINISH - POWDERCOATED ALUMINIUM
COLOUR - CHARCOAL

INTERNAL LED ILLUMINATION

MOUNTING FRAME BACKGROUND

PRIMARY 100 X 50RHS FRAME MODULES FIXED TO CLEATS
FRAME SIZE - TWO PANELS @2400MM WIDTH (HEIGHT 5300MM)

SECONDARY 50 X 50 SHS BOLTED TO PRIMARY FRAME
FRAME SIZE - 14NO PANELS @1200MM WIDTH (HEIGHT 5300MM)

3MM PERFORATED CLADDING CIRCULAR 12.5MM Dia
PERFORATIONS COLOUR TO MATCH FACADE

SKY 3.1 BUILDING IDENTIFICATION

DESIGN INTENT

ILLUMINATED 'W' LOGO

SIGN HOUSING (200MM DEEP)
FABRICATED ALUMINIUM EXTRUSION
INTERNAL ALUMINIUM SUPPORT FRAMEWORK
FINISH - CHARCOAL TRIM AND RETURNS

ILLUMINATED SIGN FACE
TENSIONED FLEXFACE VINYL BANNER
COLOUR - WHITE
INTERNAL ILLUMINATION
LED LIGHTING SYSTEM (SLOANED POSTERBOX 3 OR
SIMILAR
COLOUR - 5000K WHITE

PERFORATED BACKING
100 X 50MM RHS ALUMINIUM BACK FRAME
MECHANICALLY FIXED TO MOUNTING CLEAT OFF THE
BUILDING STRUCTURE
50 X 50MM SHS ALUMINIUM CLADDING FRAME
PERFORATED ALUMINIUM MESH CLADDING
3MM ALUMINIUM SHEET
FINISH - POWDERCOATED TO MATCH BUILDING FACADE

SKY 4.1 BUILDING IDENTIFICATION

DESIGN INTENT

WESTMEAD PRECINCT LETTERS

NON ILLUMINATED
50MM DEEP FABRICATED ALUMINIUM CONSTRUCTION (3MM)
FINISH - CHARCOAL RETURNS

3MM SIGN FACE, ADHERED TO BASE LETTER
FINISH WHITE
SCREW FIXED AND ADHERED TO MOUNTING BLANK

MOUNTING BLANK (HIDDEN)
PROFILE CUT 3MM ALUMINIUM SHEET
MECHANICALLY FIXED DIRECTLY TO THE FACADE
MOUNTING TABS TO HOLD LETTER FIXINGS

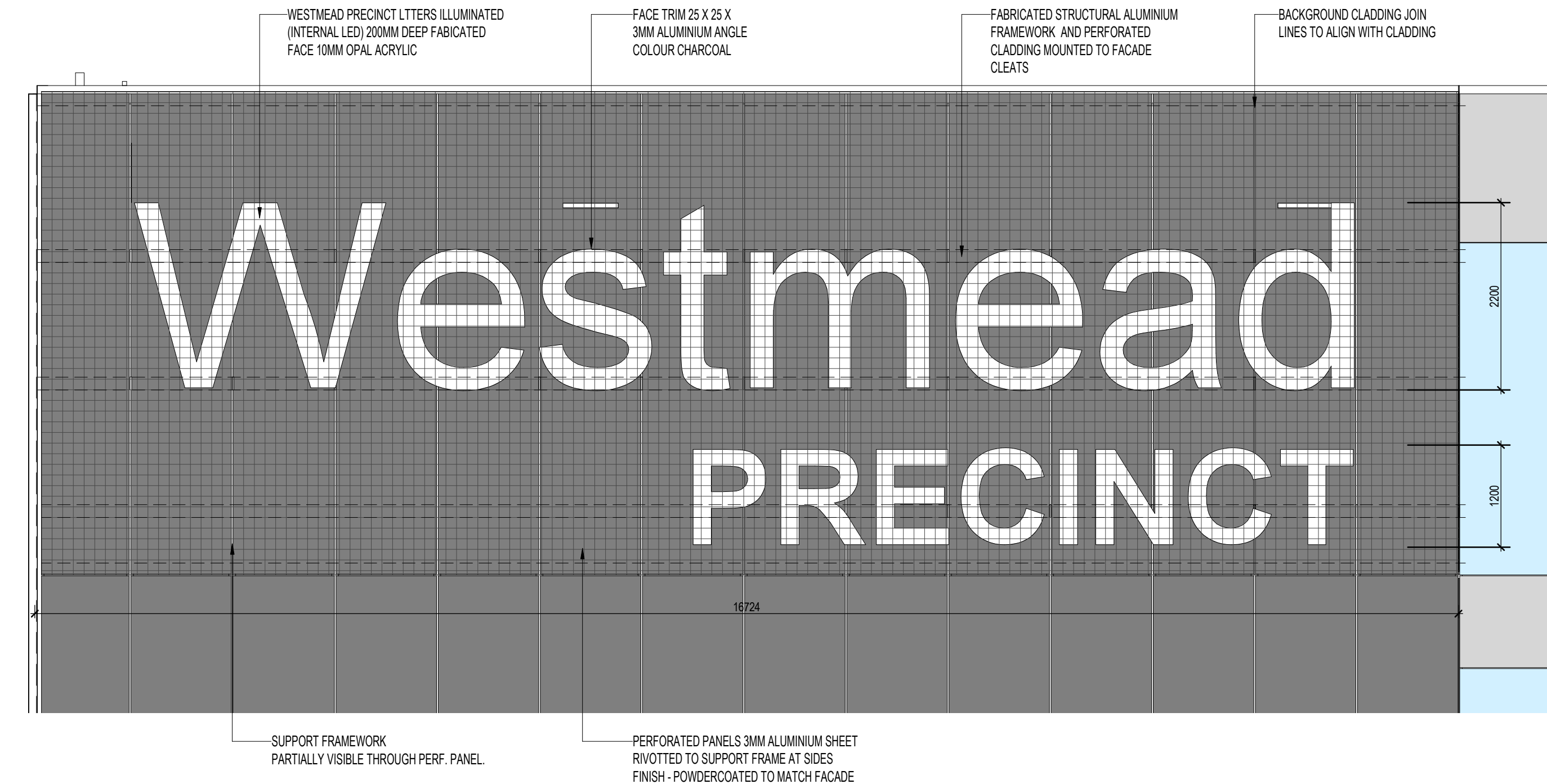
5 LETTERS

1:10



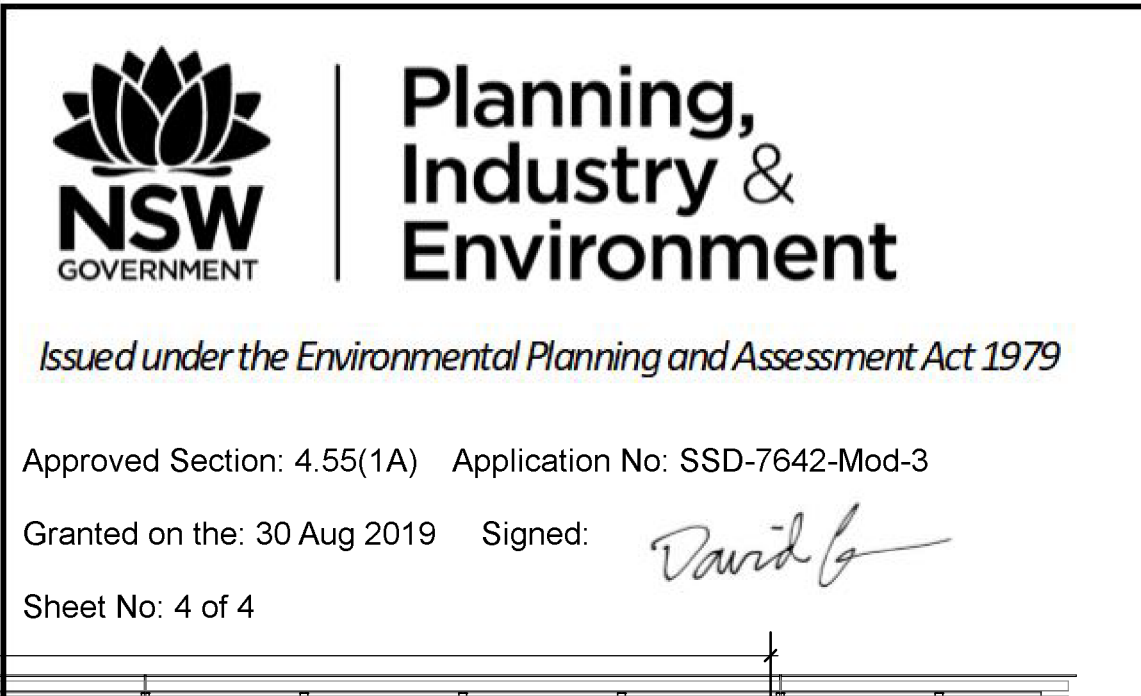
SIGN LETTERS
LED ILLUMINATED FACE
CHARCOAL TRIM AND RETURNS

MOUNTING VARIES DEPENDENT ON FACADE TYPE



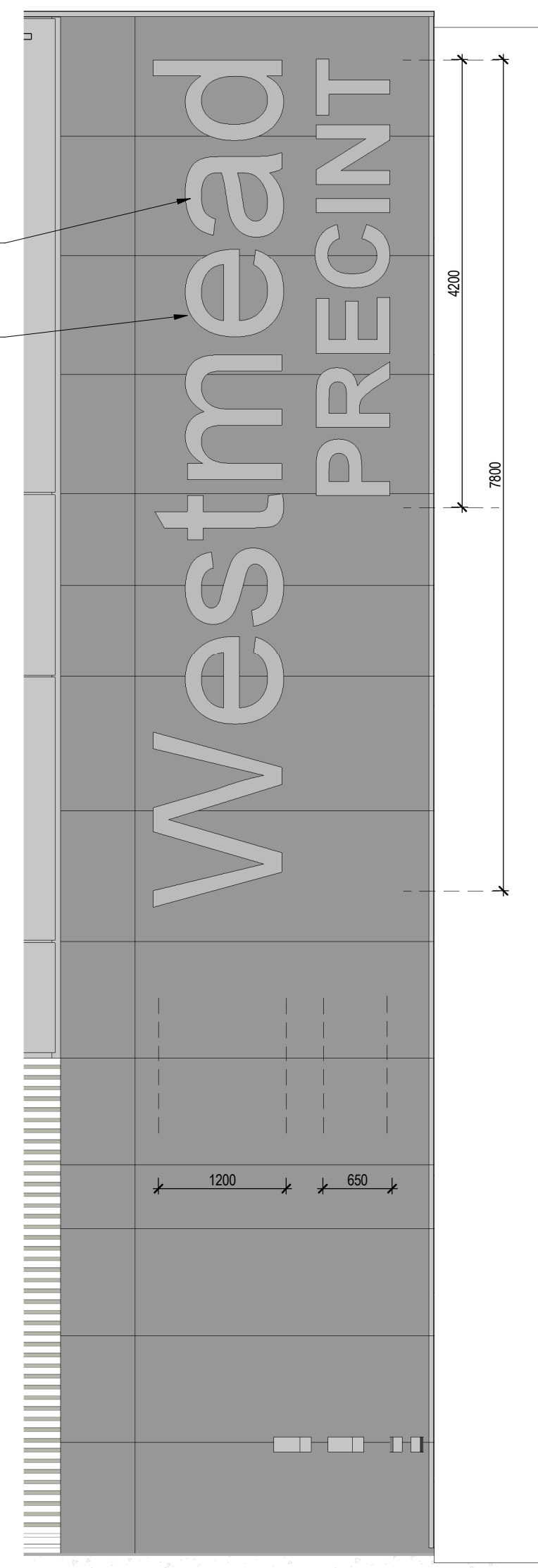
2 SKY 2.1 BUILDING IDENTIFICATION

1:50



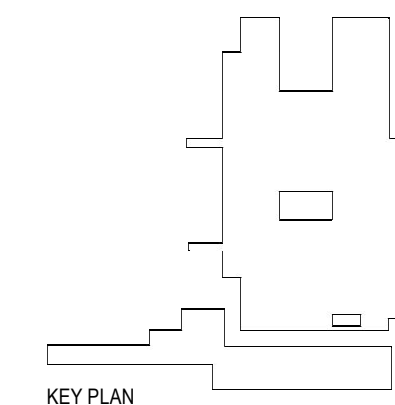
FABRICATED ALUMINIUM LETTERS SCREWFIXED DIRECTLY TO MOUNTING BLANK

MOUNTING BLANK (HIDDEN) MECHANICALLY FIXED TO FACADE



4 SKY 4.1 BUILDING IDENTIFICATION

1:50



KEY PLAN

0 250 1000 2000
1:50mm



CLIENT:
Level 14, 77 Pacific Highway
North Sydney NSW 2060
P: (02) 9978 5427
F: (02) 8904 1377
www.hinfra.health.nsw.gov.au

PROJECT MANAGER:
One International Towers Sydney
Watermans Quay
Barangaroo NSW 2000
P: (02) 6268 0000
F: (02) 6268 9999
www.pwc.com.au

CONTRACTOR:
Level 22, 133 King Street
Sydney NSW 2000
P: (02) 9322 2400
F: (02) 9322 2001
www.multiplex.global

MULTIPLEX

REV	DATE	DESCRIPTION	DWN	CH
1	03/04/19	ISSUED FOR DA	AM	AB
2	15/04/19	DA UPDATE FPR ISSUE	AM	AB

Health Infrastructure
232186
Westmead Hospital
Hawkesbury Rd, Westmead, NSW, 2145

Sheet Name
SIGNAGE TYPES

Scale
As indicated@ A1

Sheet Number
CASB-HDR-AR-SL-400053

Project Status
Revision
2

THIS DOCUMENT IS THE COPYRIGHT OF HDR.
ALL INFORMATION ILLUSTRATED ON THIS DOCUMENT IS TO BE CHECKED AND VERIFIED ON SITE. IN THE
EVENT OF DISCREPANCIES REFER TO ARCHITECT PRIOR TO COMMENCEMENT OF THE WORK. DO NOT
SCALE DRAWINGS MANUALLY OR ELECTRONICALLY.