



1 SKY SIGN INDICATIVE VIEW 01
1 : 10



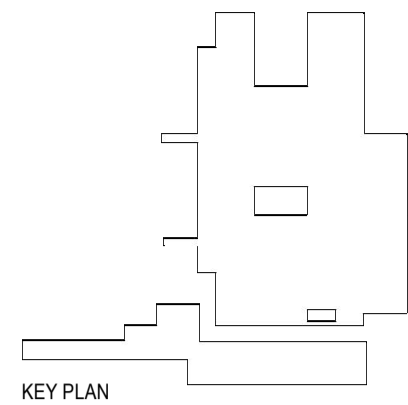
2 SKY SIGN INDICATIVE VIEW 02
1 : 10



3 SKY SIGN INDICATIVE VIEW 03
1 : 10



4 SKY SIGN INDICATIVE VIEW 04
1 : 10



0 250 1000 2000
1:500mm

HDR
Level 1, 150 Waterloo Street, North Sydney NSW 2060, Australia
+61 2 9556 2666 | info@hdr.com.au
The HDR Group (Group HDR) Pty Limited as trustee for
The HDR Group Trust (Trust HDR) trading as HDR.

Westmead Redevelopment
Building health. Transforming lives.

CLIENT:
Level 14, 77 Pacific Highway
North Sydney NSW 2060
P: (02) 9978 5427
F: (02) 8904 1377
www.hinfra.health.nsw.gov.au

NSW Health
GOVERNMENT Infrastructure

PROJECT MANAGER:
One International Towers Sydney
Watermans Quay
Barangaroo NSW 2000
P: (02) 6268 0000
F: (02) 6268 9999
www.pwc.com.au

pwc

CONTRACTOR:
Level 22, 133 King Street
Sydney NSW 2000
P: (02) 9322 2400
F: (02) 9322 2001
www.multiplex.global

MULTIPLEX

"The design shown may be subject to variation. Any amendments to approved signage must be submitted to and approved by the Secretary prior to installation".

REV	DATE	DESCRIPTION	DWN	CH
1	03/04/19	ISSUED FOR DA	AM	AB
2	15/04/19	DA UPDATE FPR ISSUE	AM	AB

Health Infrastructure
232186
Westmead Hospital
Hawkesbury Rd, Westmead, NSW, 2145

Sheet Name
SIGNAGE MONATAGES

Scale
1 : 10@ A1

Sheet Number
CASB-HDR-AR-SL-400054

Project Status

Revision
2

THIS DOCUMENT IS THE COPYRIGHT OF HDR.
ALL INFORMATION ILLUSTRATED ON THIS DOCUMENT IS TO BE CHECKED AND VERIFIED ON SITE. IN THE
EVENT OF DISCREPANCIES REFER TO ARCHITECT PRIOR TO COMMENCEMENT OF THE WORK. DO NOT
SCALE DRAWINGS MANUALLY OR ELECTRONICALLY.