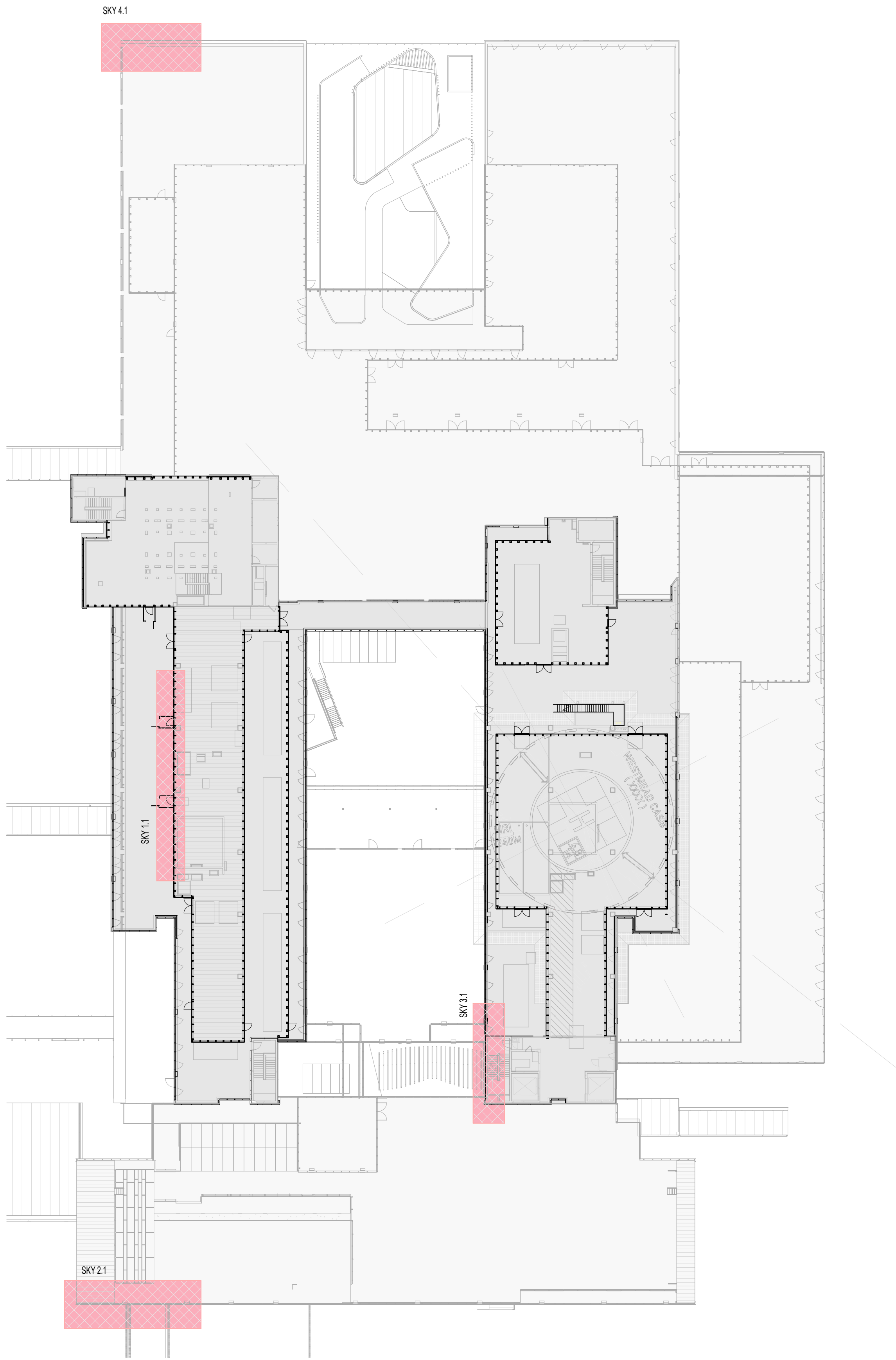
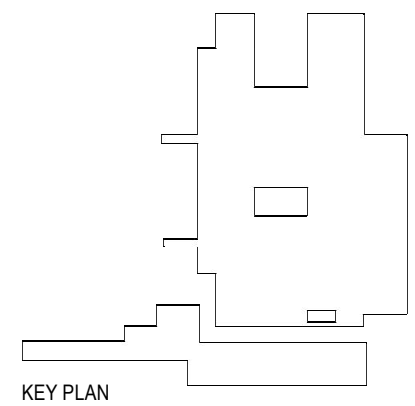




3 LOCATION PLAN
1 : 1000



2 SIGNAGE KEY PLAN
1 : 400



0 250 1000 2000
1:50mm

HDR
Level 1, 150 Walker Street, North Sydney NSW 2060, Australia
+61 2 9956 2666 | info@hdr.com.au
The HDR Group (Group HDR Pty Ltd) is a trustee for
The HDR Group Trust (ABN 58 880 304 910) trading as HDR.

Westmead Redevelopment
Building health. Transforming lives.

CLIENT:
Level 14, 77 Pacific Highway
North Sydney NSW 2060
P: (02) 9978 5427
F: (02) 8904 1377
www.hinfra.health.nsw.gov.au

NSW **Health**
GOVERNMENT Infrastructure

PROJECT MANAGER:
One International Towers Sydney
Watermans Quay
Barangaroo NSW 2000
P: (02) 6268 0000
F: (02) 6268 9999
www.pwc.com.au

pwc

CONTRACTOR:
Level 22, 135 King Street
Sydney NSW 2000
P: (02) 9322 2400
F: (02) 9322 2001
www.multiplex.global

MULTIPLEX

"The design shown may be subject to variation. Any amendments to approved signage must be submitted to and approved by the Secretary prior to installation."

REV	DATE	DESCRIPTION	DWN	CH
1	03/04/19	ISSUED FOR DA	AM	AB
2	15/04/19	DA UPDATE FPR ISSUE	AM	AB

Health Infrastructure
232186
Westmead Hospital
Hawkesbury Rd, Westmead, NSW, 2145

Sheet Name
SIGNAGE LOCATION PLAN

Scale
As indicated@ A1

Sheet Number
CASB-HDR-AR-SL-400050

Project Status
2

THIS DOCUMENT IS THE COPYRIGHT OF HDR.
ALL INFORMATION ILLUSTRATED ON THIS DOCUMENT IS TO BE CHECKED AND VERIFIED ON SITE. IN THE
EVENT OF DISCREPANCIES REFER TO ARCHITECT PRIOR TO COMMENCEMENT OF THE WORK. DO NOT
SCALE DRAWINGS MANUALLY OR ELECTRONICALLY.