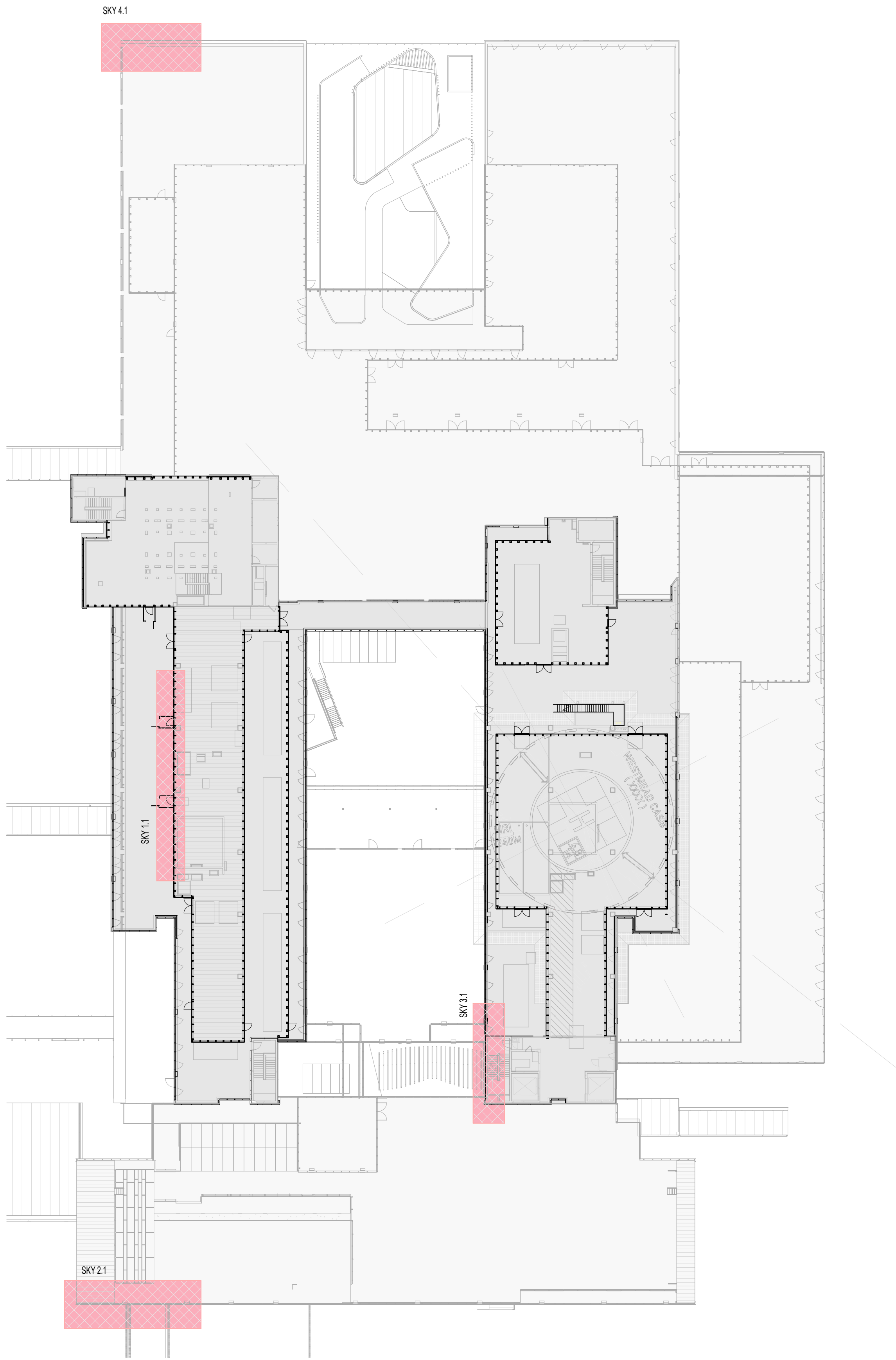
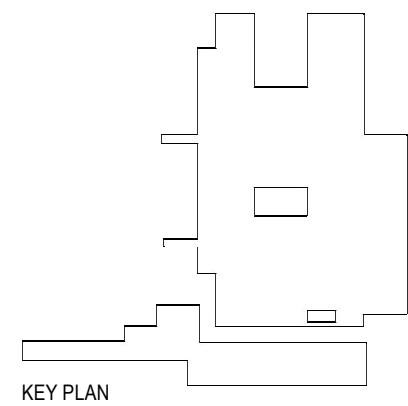




3 LOCATION PLAN  
1:1000



2 SIGNAGE KEY PLAN  
1:400



0 250 1000 2000  
1:50mm



Level 1, 150 Walker Street, North Sydney NSW 2060, Australia  
+61 2 9556 2666 | info@hdr.com.au  
The HDR Group (Group) is a Pty Ltd company trading as HDR.  
The HDR Group Trading Trust AIN 58 880 304 910 trading as HDR.



CLIENT:  
Level 14, 77 Pacific Highway  
North Sydney NSW 2060  
P: (02) 9978 5427  
F: (02) 8904 1377  
www.hinfra.health.nsw.gov.au



Health  
Infrastructure

PROJECT MANAGER:  
One International Towers Sydney  
Watermans Quay  
Barangaroo NSW 2000  
P: (02) 6268 0000  
F: (02) 6268 9999  
www.pwc.com.au



CONTRACTOR:  
Level 22, 135 King Street  
Sydney NSW 2000  
P: (02) 9322 2400  
F: (02) 9322 2001  
www.multiplex.global



REV	DATE	DESCRIPTION	DWN	CH
1	03/04/19	ISSUED FOR DA	AM	AB
2	15/04/19	DA UPDATE FPR ISSUE	AM	AB

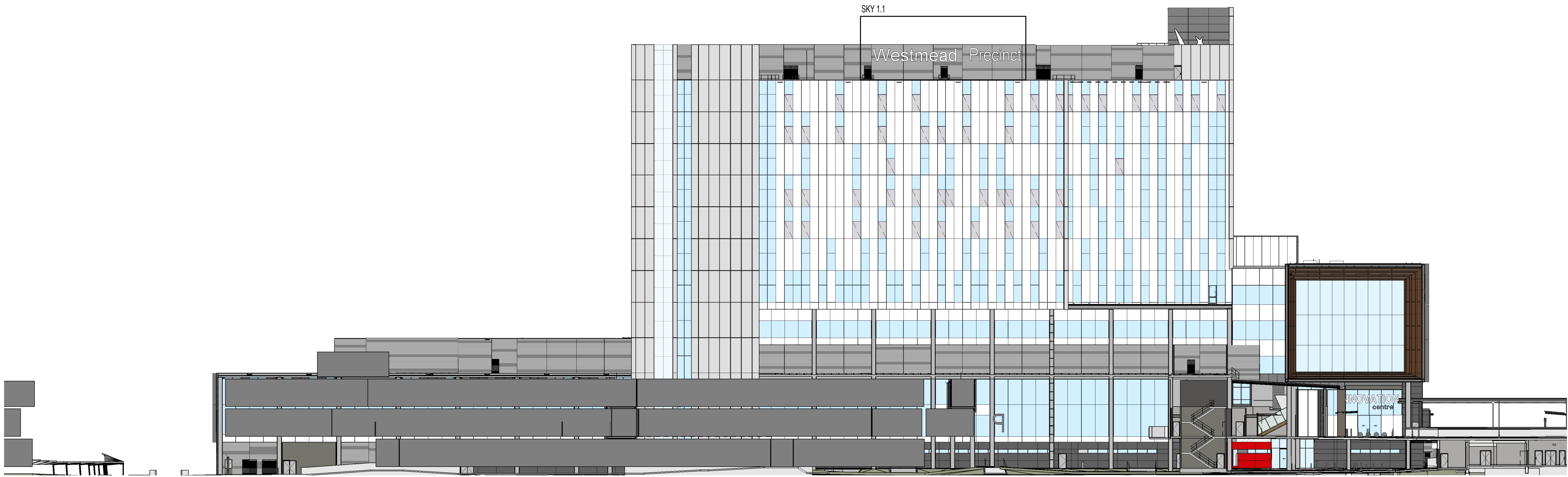
Health Infrastructure  
232186  
Westmead Hospital  
Hawkesbury Rd, Westmead, NSW, 2145

Sheet Name  
SIGNAGE LOCATION PLAN

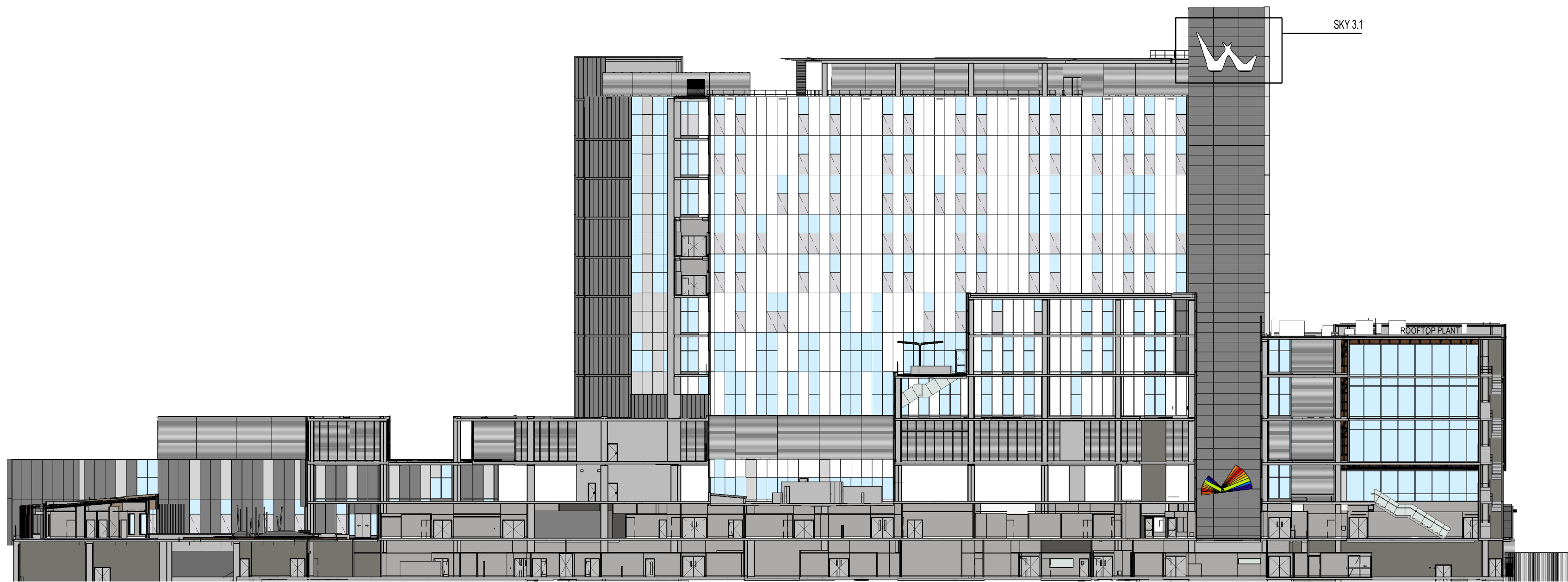
Scale  
As indicated@ A1  
Sheet Number  
CASB-HDR-AR-SL-400050  
Project Status  
Revision  
2

THIS DOCUMENT IS THE COPYRIGHT OF HDR.  
ALL INFORMATION ILLUSTRATED ON THIS DOCUMENT IS TO BE CHECKED AND VERIFIED ON SITE. IN THE  
EVENT OF DISCREPANCIES REFER TO ARCHITECT PRIOR TO COMMENCEMENT OF THE WORK. DO NOT  
SCALE DRAWINGS MANUALLY OR ELECTRONICALLY.





1 SIGNAGE - South-West  
1:400



2 SIGNAGE - LARGE COURTYARD - EAST  
1:400



Level 1, 150 Walker Street, North Sydney NSW 2060, Australia  
+61 2 9596 2666 | [info@hdr.com.au](mailto:info@hdr.com.au)  
The HDR Group (Group) (HDR) Pty Limited as trustee for  
The HDR Group Trust (A/N 58 880 304 910 trading as HDR).



CLIENT:  
Level 14, 77 Pacific Highway  
North Sydney NSW 2060  
P: (02) 9978 5427  
F: (02) 8904 1377  
[www.hinfra.health.nsw.gov.au](http://www.hinfra.health.nsw.gov.au)



PROJECT MANAGER:  
One International Towers Sydney  
Watermans Quay  
Barangaroo NSW 2000  
P: (02) 6268 0000  
F: (02) 6268 9999  
[www.pwc.com.au](http://www.pwc.com.au)



CONTRACTOR:  
Level 22, 135 King Street  
Sydney NSW 2000  
P: (02) 9322 2400  
F: (02) 9322 2001  
[www.multiplex.global](http://www.multiplex.global)



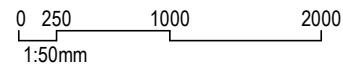
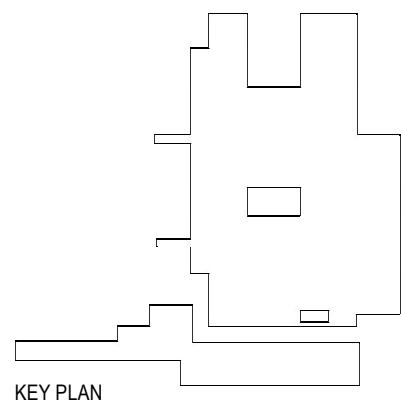
REV	DATE	DESCRIPTION	DWN	CH
1	27/03/19	UPDATED FOR S&B APPLICATION	CH	AB

Health Infrastructure  
232186  
Westmead Hospital  
Hawkesbury Rd, Westmead, NSW, 2145

Sheet Name  
SIGNAGE LOCATION ELEVATIONS  
SHEET 2

Scale  
1 : 400@ A1  
Sheet Number  
CASB-HDR-AR-SL-400052  
Project Status  
Revision  
1

THIS DOCUMENT IS THE COPYRIGHT OF HDR.  
ALL INFORMATION ILLUSTRATED ON THIS DOCUMENT IS TO BE CHECKED AND VERIFIED ON SITE. IN THE  
EVENT OF DISCREPANCIES REFER TO ARCHITECT PRIOR TO COMMENCEMENT OF THE WORK. DO NOT  
SCALE DRAWINGS MANUALLY OR ELECTRONICALLY.



**HDR**  
Level 1, 150 Walker Street, North Sydney NSW 2060, Australia  
+61 2 9556 2666 | [hdr.com.au](http://hdr.com.au)  
The HDR Group (Group NSW) Pty Limited as trustee for  
The HDR Group Trust (ABN 58 880 304 910) trading as HDR.

**Westmead Redevelopment**  
Building health. Transforming lives.

**CLIENT:**  
Level 14, 77 Pacific Highway  
North Sydney NSW 2060  
P: (02) 9978 5427  
F: (02) 8904 1377  
[www.hinfra.health.nsw.gov.au](http://www.hinfra.health.nsw.gov.au)

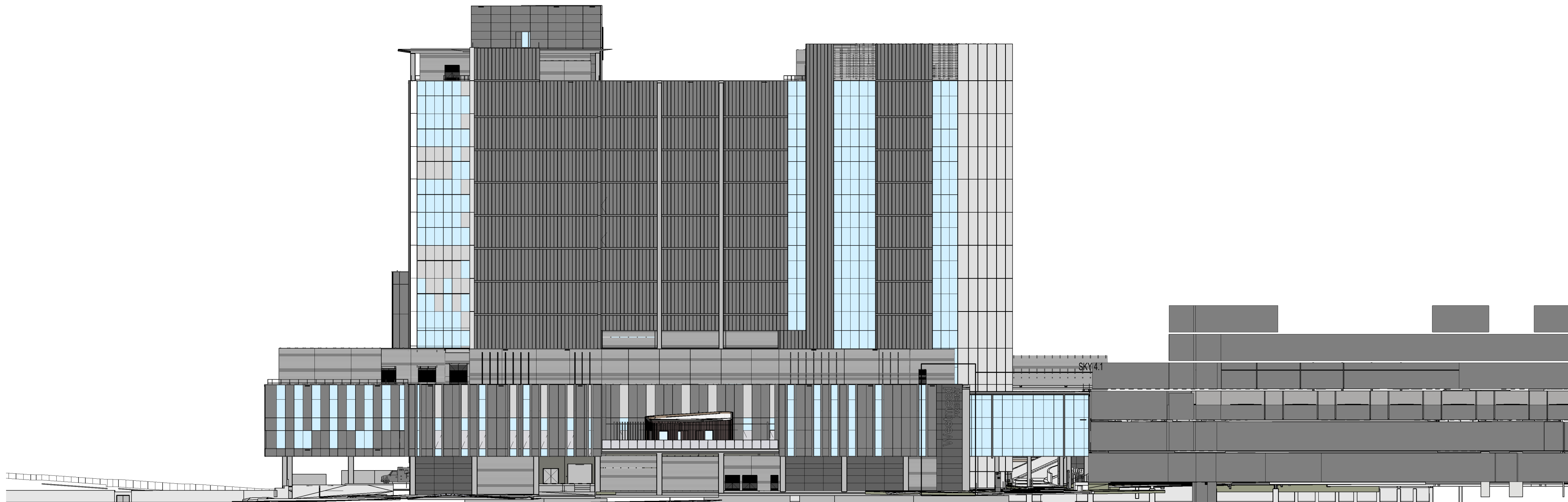


**PROJECT MANAGER:**  
One International Towers Sydney  
Watermans Quay  
Barangaroo NSW 2000  
P: (02) 6268 0000  
F: (02) 6268 9999  
[www.pwc.com.au](http://www.pwc.com.au)



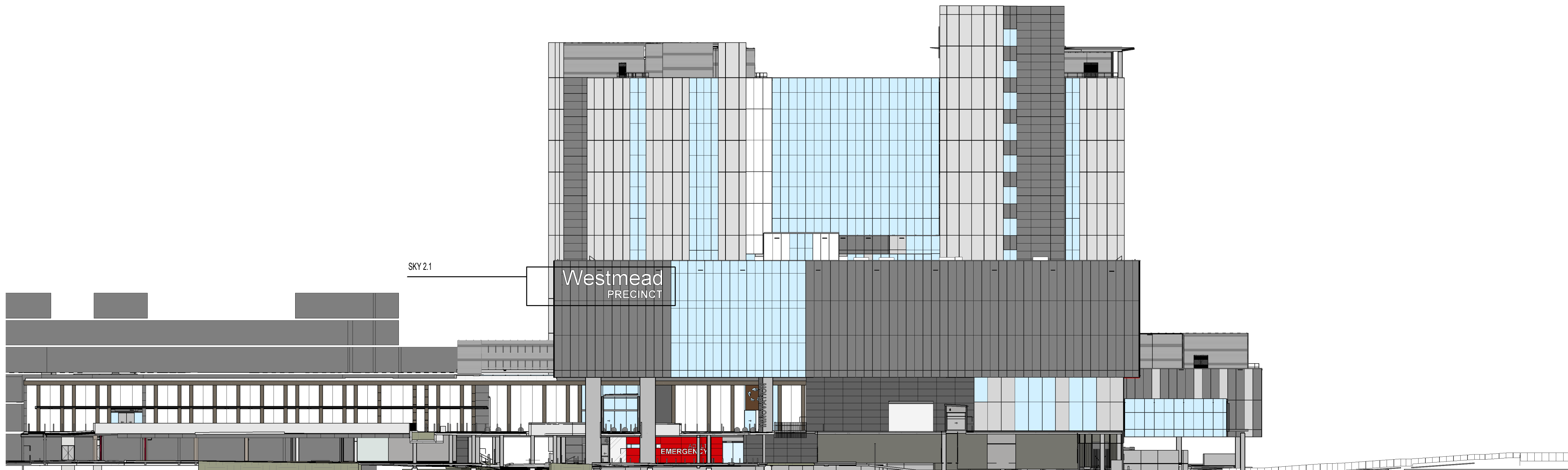
**CONTRACTOR:**  
Level 22, 135 King Street  
Sydney NSW 2000  
P: (02) 9322 2400  
F: (02) 9322 2001  
[www.multiplex.global](http://www.multiplex.global)

**MULTIPLEX**



1

**SIGNAGE - North-West**  
1 : 400



2

**SIGNAGE - South-East**  
1 : 400

REV	DATE	DESCRIPTION	DWN	CH
1	03/04/19	ISSUED FOR DA	AM	AB
2	27/05/19	UPDATED FOR S66 APPLICATION	CH	AB

**Health Infrastructure**  
**232186**  
**Westmead Hospital**  
Hawkesbury Rd, Westmead, NSW, 2145

Sheet Name  
**SIGNAGE LOCATION ELEVATIONS**  
**SHEET 1**

Scale  
**1 : 400@ A1**

Sheet Number  
**CASB-HDR-AR-SL-400051**

Project Status

Revision  
**2**

THIS DOCUMENT IS THE COPYRIGHT OF HDR.  
ALL INFORMATION ILLUSTRATED ON THIS DOCUMENT IS TO BE CHECKED AND VERIFIED ON SITE. IN THE  
EVENT OF DISCREPANCIES REFER TO ARCHITECT PRIOR TO COMMENCEMENT OF THE WORK. DO NOT  
SCALE DRAWINGS MANUALLY OR ELECTRONICALLY.





1 SKY SIGN INDICATIVE VIEW 01  
1 : 10



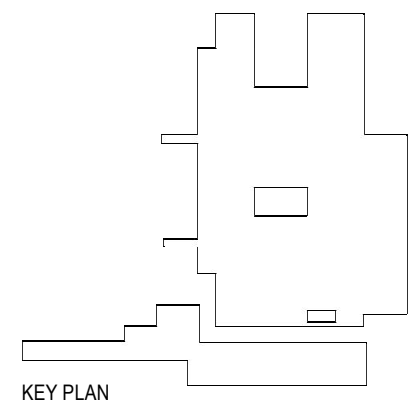
2 SKY SIGN INDICATIVE VIEW 02  
1 : 10



3 SKY SIGN INDICATIVE VIEW 03  
1 : 10



4 SKY SIGN INDICATIVE VIEW 04  
1 : 10



0 250 1000 2000  
1:50mm

HDR

Level 1, 150 Walker Street, North Sydney NSW 2060, Australia  
+61 2 9956 2666 | info@hdr.com.au  
The HDR Group (Group HDR) Pty Limited as trustee for  
The HDR Group Trust (ASX: HDR) trading as HDR.

Westmead Redevelopment  
Building health. Transforming lives.

CLIENT:  
Level 14, 77 Pacific Highway  
North Sydney NSW 2060  
P: (02) 9978 5427  
F: (02) 8904 1377  
www.hinfra.health.nsw.gov.au

NSW Health  
GOVERNMENT Infrastructure

PROJECT MANAGER:  
One International Towers Sydney  
Watermans Quay  
Barangaroo NSW 2000  
P: (02) 6268 0000  
F: (02) 6268 9999  
www.pwc.com.au

pwc

CONTRACTOR:  
Level 22, 133 King Street  
Sydney NSW 2000  
P: (02) 9322 2400  
F: (02) 9322 2001  
www.multiplex.global

MULTIPLEX

REV	DATE	DESCRIPTION	DWN	CH
1	03/04/19	ISSUED FOR DA	AM	AB
2	15/04/19	DA UPDATE FPR ISSUE	AM	AB

Health Infrastructure  
232186  
Westmead Hospital  
Hawkesbury Rd, Westmead, NSW, 2145

Sheet Name  
SIGNAGE MONATAGES

Scale  
1 : 10@ A1

Sheet Number  
CASB-HDR-AR-SL-400054

Revision  
2

Project Status

THIS DOCUMENT IS THE COPYRIGHT OF HDR.  
ALL INFORMATION ILLUSTRATED ON THIS DOCUMENT IS TO BE CHECKED AND VERIFIED ON SITE. IN THE  
EVENT OF DISCREPANCIES REFER TO ARCHITECT PRIOR TO COMMENCEMENT OF THE WORK. DO NOT  
SCALE DRAWINGS MANUALLY OR ELECTRONICALLY.



