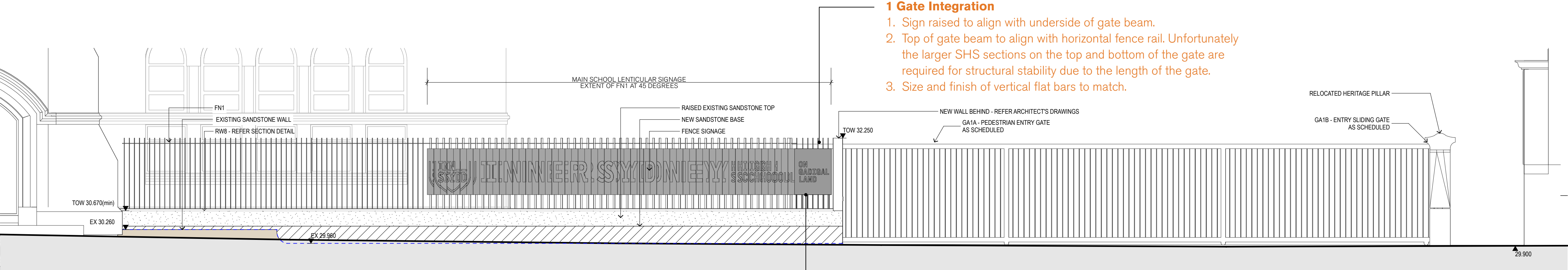


# Fencing

## Chalmers Street Main Entry



### 1 Gate Integration

1. Sign raised to align with underside of gate beam.
2. Top of gate beam to align with horizontal fence rail. Unfortunately the larger SHS sections on the top and bottom of the gate are required for structural stability due to the length of the gate.
3. Size and finish of vertical flat bars to match.

### FN1

New vertical blade fencing on raised sandstone plinth. Raised sandstone plinth for flood control.

### SCHOOL SIGNAGE

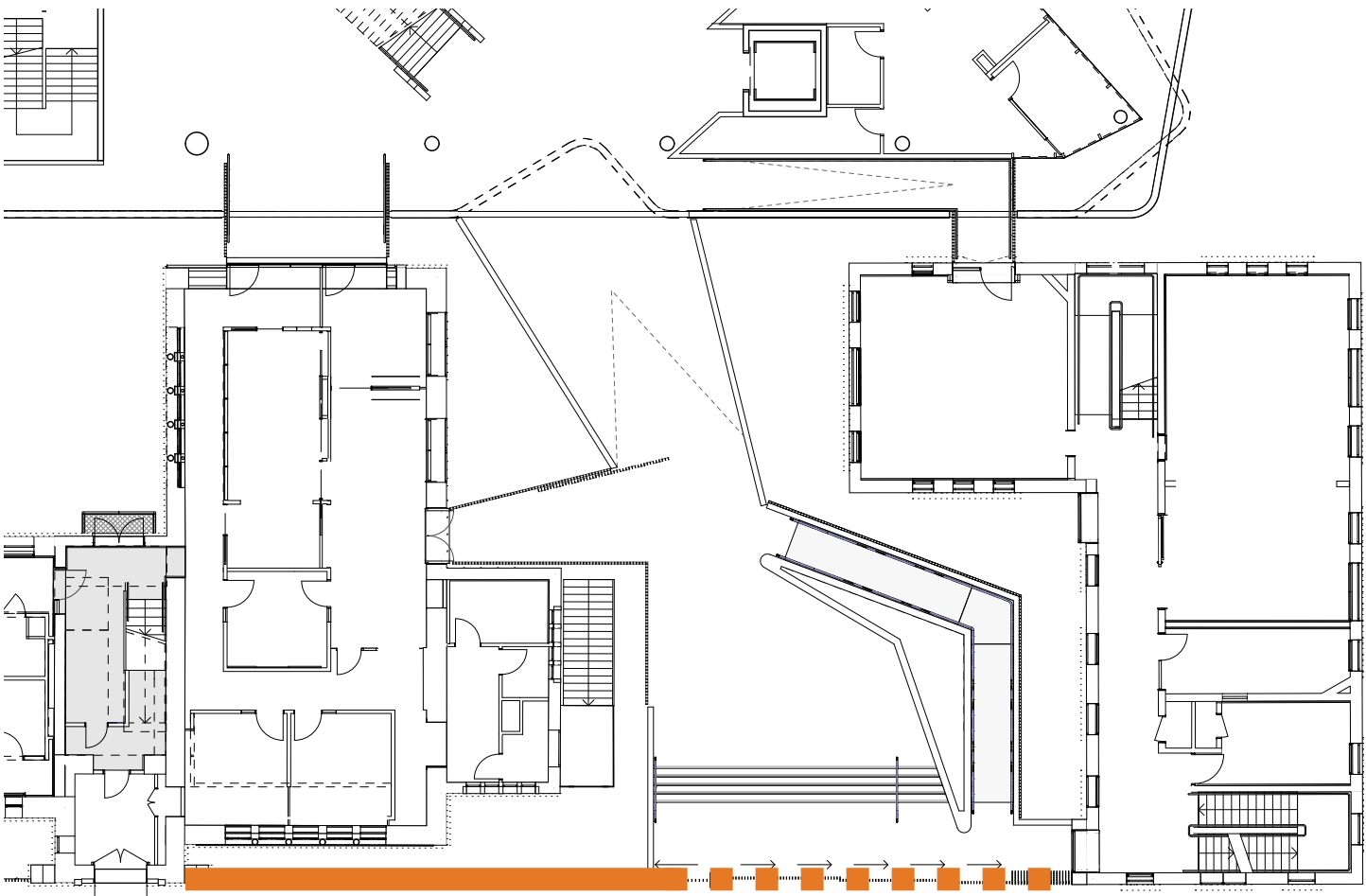
Lenticular signage integrated into fencing. Concept by Andrew Hoyne Design

### MOTORISED SLIDING SECURITY GATE

Closed after hours

### 2 “On Gadigal Land” Sign Modification

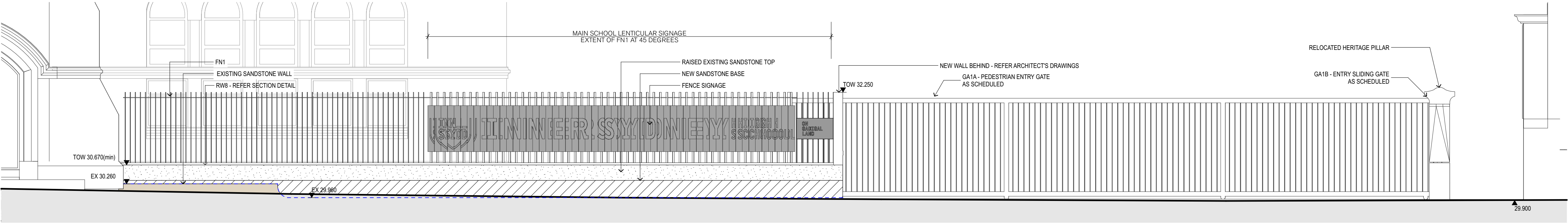
1. Flat plate sign increased to become a part of lenticular panel
2. Font increased to align with adjacent font.



CHALMERS STREET

Fencing

Chalmers Street Main Entry



**FN1**

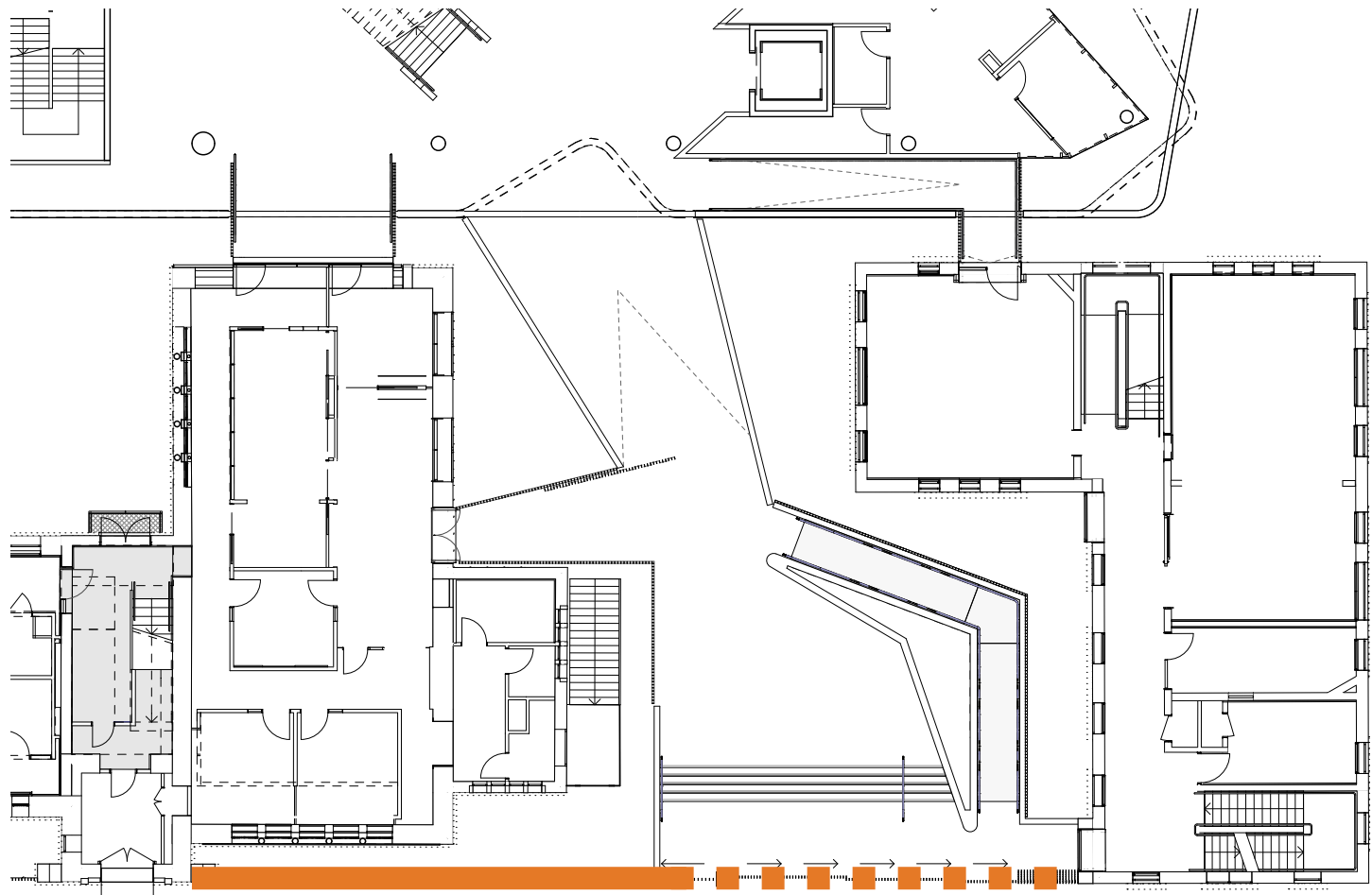
New vertical blade fencing on raised sandstone plinth. Raised sandstone plinth for flood control.

**SCHOOL SIGNAGE**

Lenticular signage integrated into fencing. Concept by Andrew Hoyne Design

**MOTORISED SLIDING SECURITY GATE**

Closed after hours



**CHALMERS STREET**