

0 2 5 10m

**GENERAL NOTES**

- ALL DIMENSIONS AND EXISTING CONDITIONS SHALL BE CHECKED AND VERIFIED BY THE CONTRACTOR BEFORE PROCEEDING WITH THE WORK
- ALL LEVELS RELATIVE TO AUSTRALIAN HEIGHT DATUM
- DO NOT SCALE DRAWINGS
- USE FIGURED DIMENSIONS ONLY

Legend

**LEGEND - FACADE TYPES**

FT01	'Verandah'
FT02	Stairwell
FT03	Glazed Facade
FT04	'Cloud' Facade
FT04a	'Cloud' Facade (Air Gap)
FT05	'Verandah' Rooftop
FT06	Studio
FT07	Studio (North and South Ends)
FT08	Podium
FT09	Window wall
BS7	Balustrade - Tensile Webnet
BLK1	Block Work Rendered
FC	Fibre Cement

**REVISIONS**

1	Design Development of Podium Form and the relationship of ground plane and park
2	Relocation of 1 story from the Studio to the Tower resulting in a height reduction of the Studio volume of approximately 3 metres.
3	Reduction in height of the roof top Games Court Fence.
4	Revised floor to floor heights following development of services spatial coordination.
5	Revised overall height to conceal rooftop plant and maintain a modulated silhouette of the tower forms.
6	Reverted to a Terracotta Facade System
7	Removal of the twisted form and realignment of the structural grid.

D	9/10/17	RTS Submission	MS	EC
C	20/9/17	RTS Submission	MS	EC
B	1/10/17	SDD Application	MS	EC
A	9/8/17	SDD Application	MS	EC
rev	date	name	by	chk

fjmt studio architecture interiors landscape urban community  
sydney melbourne uk  
Level 5, 70 King Street t +61 2 9251 7077 w fjmtstudio.com

project  
**Inner Sydney High School**  
244 Cleveland Street  
Surry Hills, Sydney NSW 2010

title  
**Elevations**  
**West Elevation**

scale	1:200 @ A1	first issued	9/8/2017
project code	sheet no.	revision	
ISHS	3002	D	





South - Context  
1:200

02510m

GENERAL NOTES

ALL DIMENSIONS AND EXISTING CONDITIONS SHALL BE  
◦ CHECKED AND VERIFIED BY THE CONTRACTOR  
BEFORE PROCEEDING WITH THE WORK  
◦ ALL LEVELS RELATIVE TO 'AUSTRALIAN HEIGHT DATUM'  
◦ DO NOT SCALE DRAWINGS  
◦ USE FIGURED DIMENSIONS ONLY

Legend

LEGEND - FACADE TYPES

FT01	'Verandah'
FT02	Stairwell
FT03	Glazed Facade
FT04	'Cloud' Facade
FT04a	'Cloud' Facade (Air Gap)
FT05	'Verandah' Rooftop
FT06	Studio
FT07	Studio (North and South Ends)
FT08	Podium
FT09	Window wall
BS7	Balustrade - Tensile Webnet
BLK1	Block Work Rendered
FC	Fibre Cement

- REVISIONS
- 1

Design Development of Podium Form and the relationship of ground plane and park
- 2

Relocation of 1 story from the Studio to the Tower resulting in a height reduction of the Studio volume of approximately 3 metres.
- 3

Revised floor to floor heights following development of services spatial coordination.
- 4

Revised overall height to conceal rooftop plant and maintain a modulated silhouette of the tower forms.
- 5

Reverted to a Terracotta Facade System

D	9/10/17	RTS Submission	MS	EC
C	20/9/17	RTS Submission	MS	EC
B	11/9/17	SSD Application	MS	EC
A	9/8/17	SSD Application	MS	EC
rev	date	name	by	chk

fjmt studio architecture interiors landscape urban community

sydney melbourne uk

Level 5, 70 King Street E +61 2 9251 7077 [www.fjmtstudio.com](#)

fjmt

project  
Inner Sydney High School  
244 Cleveland Street  
Surry Hills, Sydney NSW 2010

title  
Elevations  
South Elevation

scale 1:200 @ A1

first issued 9/6/2017

project code

sheet no.

revision

ISHS

3003

D



02510

GENERAL NOTES

ALL DIMENSIONS AND EXISTING CONDITIONS SHALL BE  
CHECKED AND VERIFIED BY THE CONTRACTOR  
BEFORE PROCEEDING WITH THE WORK  
ALL LEVELS RELATIVE TO 'AUSTRALIAN HEIGHT DATUM'  
DO NOT SCALE DRAWINGS  
USE FIGURED DIMENSIONS ONLY

legend

LEGEND - FACADE TYPES

FT01	'Verandah'
FT02	Stairwell
FT03	Glazed Facade
FT04	'Cloud' Facade
FT04a	'Cloud' Facade (Air Gap)
FT05	'Verandah' Rooftop
FT06	Studio
FT07	Studio (North and South Ends)
FT08	Podium
FT09	Window wall
BS7	Balustrade - Tensile Webnet
BLK1	Block Work Rendered
FC	Fibre Cement

- REVISIONS
- 1

Design Development of Podium Form and the relationship of ground plane and park
- 2

Relocation of 1 story from the Studio to the Tower resulting in a height reduction of the Studio volume of approximately 3 metres.
- 3

Reduction in height of the roof top Games Court Fence.
- 4

Revised floor to floor heights following development of services spatial coordination.
- 5

Revised overall height to conceal rooftop plant and maintain a modulated silhouette of the tower forms.
- 6

Reverted to a Terracotta Facade System
- 7

Removal of the twisted form and realignment of the structural grid.



D	9/10/17	RTS Submission	MS	EC
C	20/9/17	RTS Submission	MS	EC
B	1/10/17	SSD Application	MS	EC
A	9/8/17	SSD Application	MS	EC
rev	date	name	by	chk

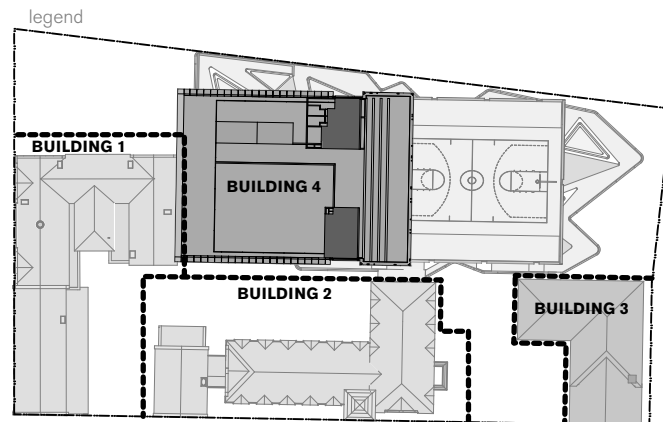
fjmt studio architecture interiors landscape urban community  
sydney melbourne uk  
Level 5, 70 King Street t +61 2 9251 7077 w fjmtstudio.com

project  
**Inner Sydney High School**  
244 Cleveland Street  
Surry Hills, Sydney NSW 2010

title  
**Elevations**  
**East Elevation**

scale	1:200 @ A1	first issued	9/6/2017
project code	sheet no.	revision	
<b>ISHS</b>	<b>3004</b>		<b>D</b>





- Existing construction and dimensions shown on these documents are indicative only, and must be verified on site prior to the commencement of any construction or fabrication.
- The contractor must approach the works in a very careful, methodical and meticulous manner. Regular on site meetings must be carried out with relevant stakeholders and contractors.



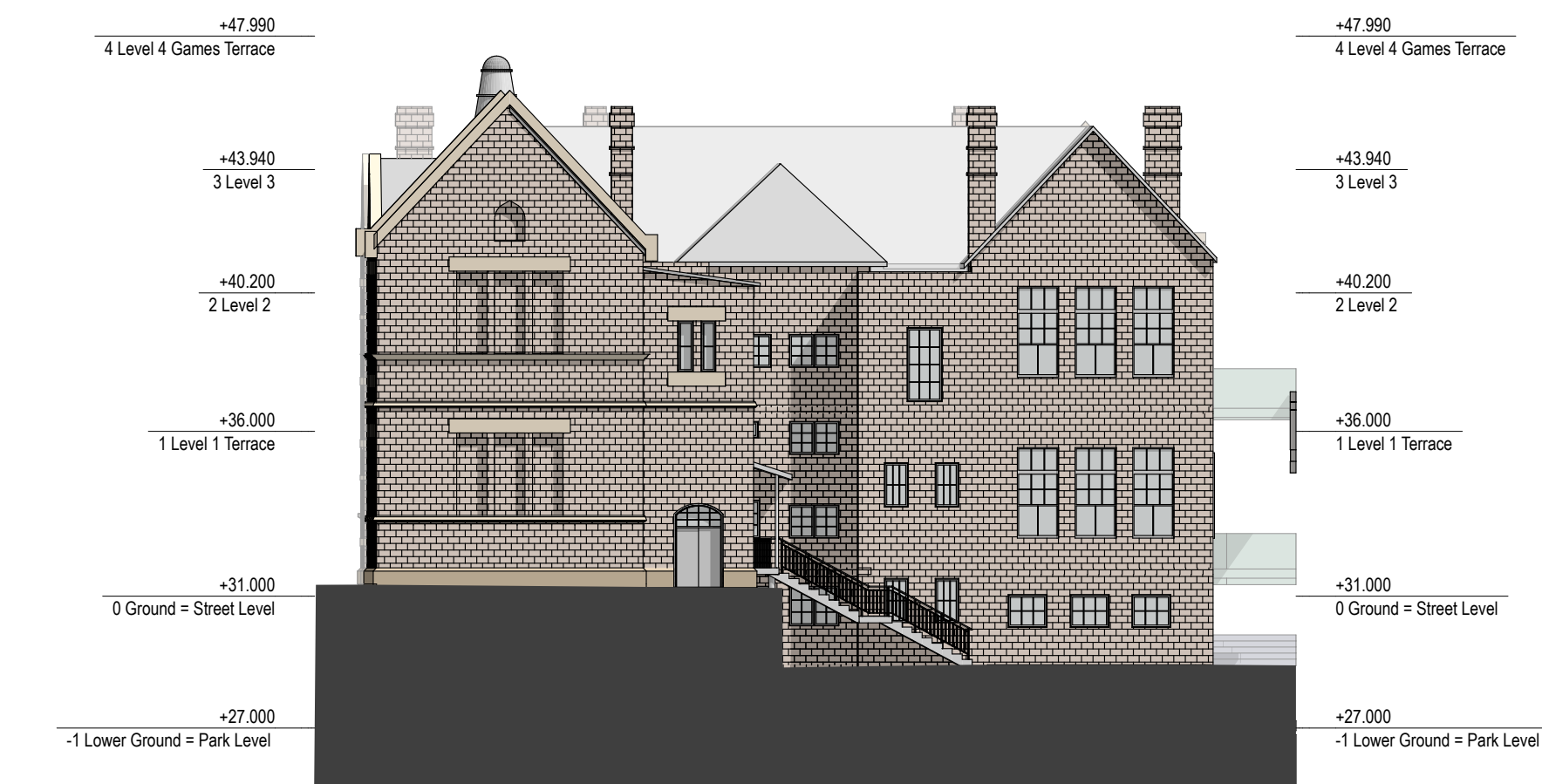
South Elevation Building 1 Proposed  
1:200



West Elevation Building 1 Proposed  
1:200



North Elevation Building 1 Proposed  
1:200



East Elevation Building 1 Proposed  
1:200

C	9/10/17	RTS Submission	CM	EC
B	20/9/17	RTS Submission	CM	EC
A	11/9/17	SSD Application	CM	EC

---

rev	date	name	by	chk
-----	------	------	----	-----

**fjmt studio** architecture interiors landscape urban community  
sydney melbourne uk  
Level 5, 70 King Street t +61 2 9251 7077 w [fjmtstudio.com](http://fjmtstudio.com)

project  
**Inner Sydney High School**  
244 Cleveland Street  
Surry Hills, Sydney NSW 2010

title  
**Proposed Elevations**  
**Elevations Building 1 Proposed**

scale	1:200 @ A1	first issued	11/9/17
project code	sheet no.	revision	
<b>ISHS</b>	<b>3201</b>	<b>C</b>	

02510m

GENERAL NOTES

ALL DIMENSIONS AND EXISTING CONDITIONS SHALL BE  
CHECKED AND VERIFIED BY THE CONTRACTOR  
BEFORE PROCEEDING WITH THE WORK  
ALL LEVELS RELATIVE TO 'AUSTRALIAN HEIGHT DATUM'  
DO NOT SCALE DRAWINGS  
USE FIGURED DIMENSIONS ONLY

legend

BUILDING 1

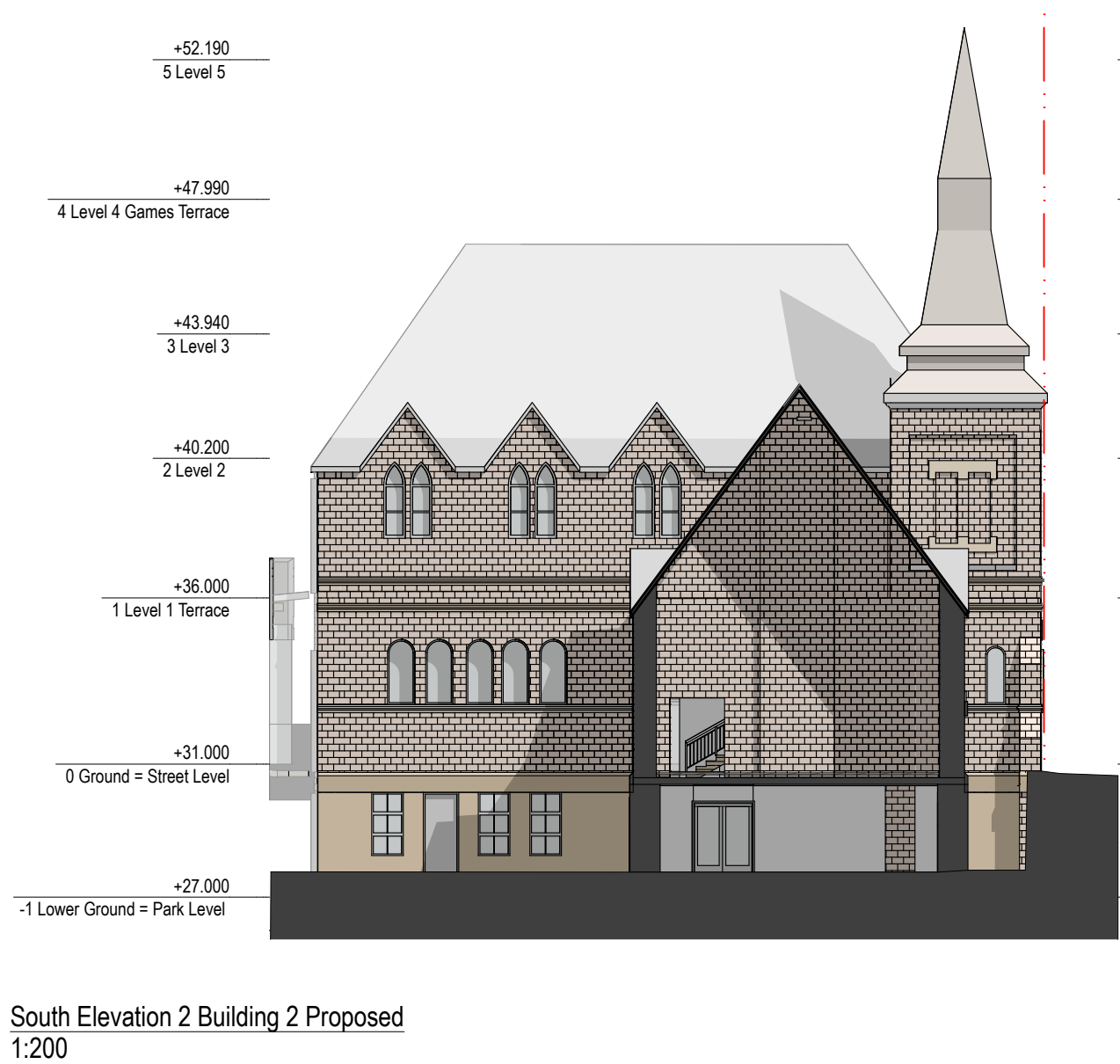
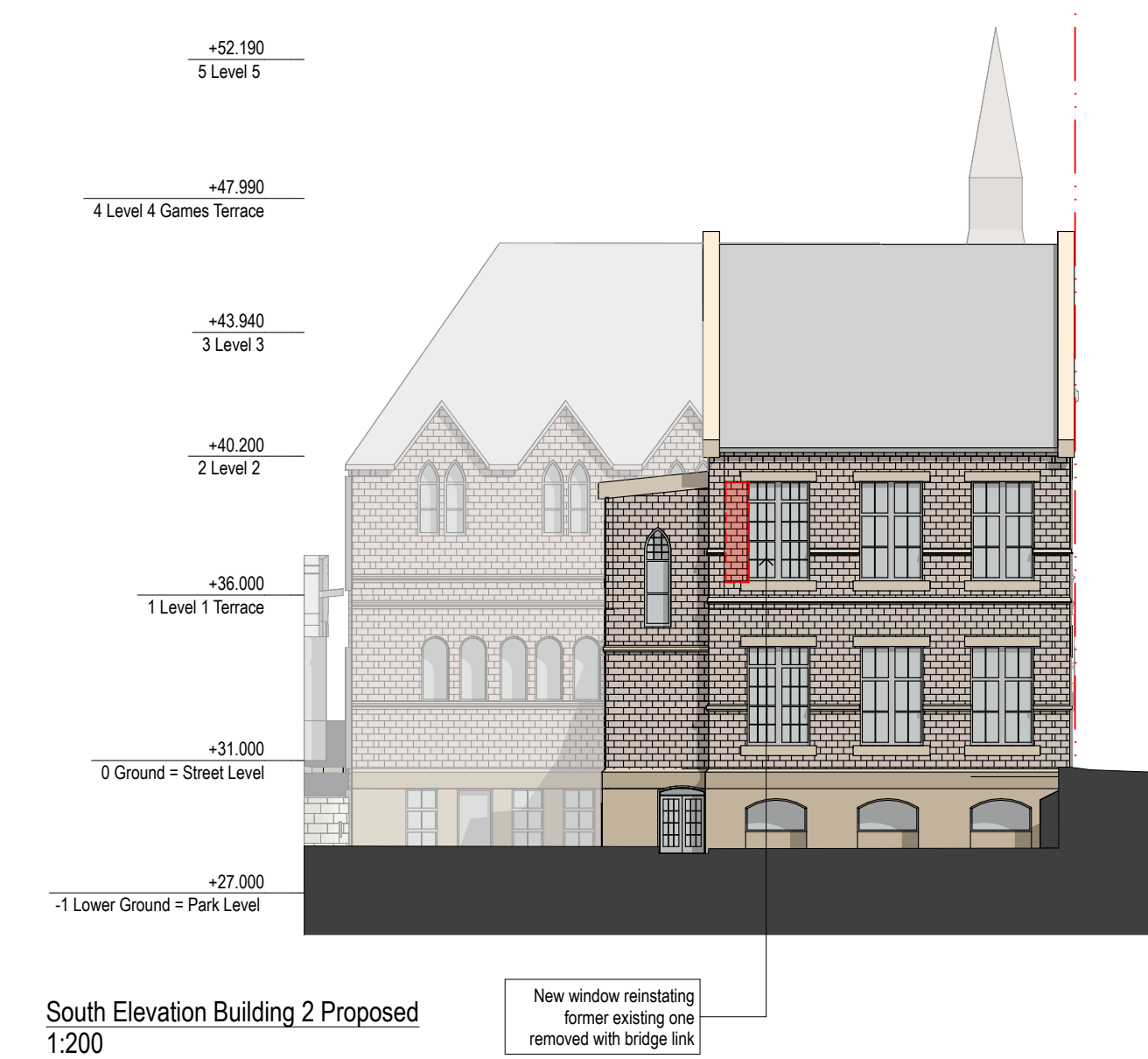
BUILDING 4

BUILDING 2

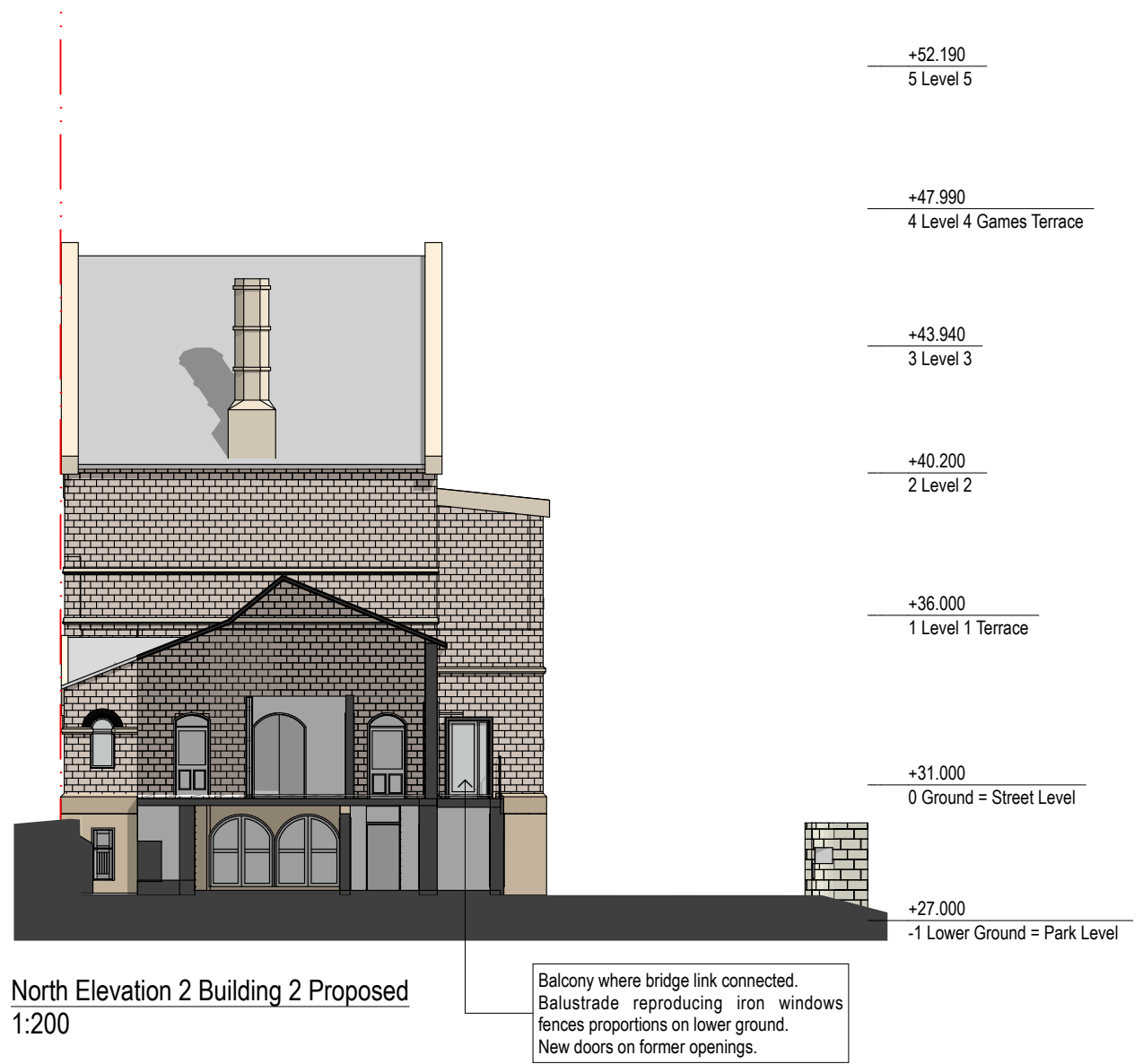
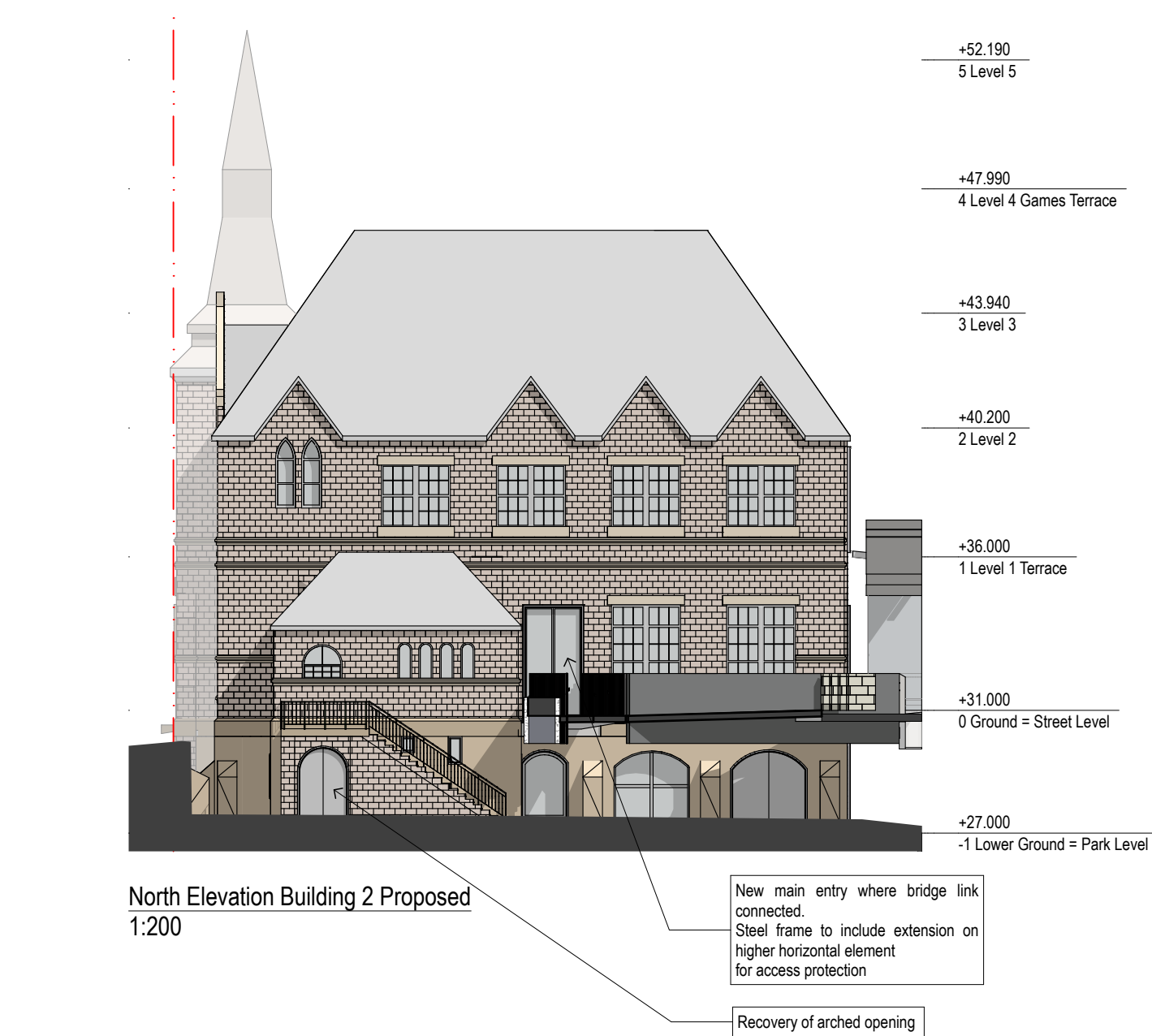
BUILDING 3

HERITAGE BUILDING NOTES

1. Existing construction and dimensions shown on these documents are indicative only, and must be verified on site prior to the commencement of any construction or fabrication.  
2. The contractor must approach the works in a very careful, methodical and meticulous manner. Regular on site meetings must be carried out with relevant stakeholders and contractors.



REVISIONS
1 Modified Proposal



C	8/10/17	RTS Submission	CM	EC
B	20/8/17	RTS Submission	CM	EC
A	11/8/17	S&S Application	CM	EC
rev	date	name	by	chk

fjmt studio architecture interiors landscape urban community

sydney melbourne uk

Level 5, 70 King Street t +61 2 9251 7077 w [fjmtstudio.com](#)

project

Inner Sydney High School  
244 Cleveland Street  
Surry Hills, Sydney NSW 2010

title

Proposed Elevations  
Elevations Building 2 Proposed

scale

1:200 @ A1

first issued

11/8/17

project code

sheet no.

revision

ISHS3202C

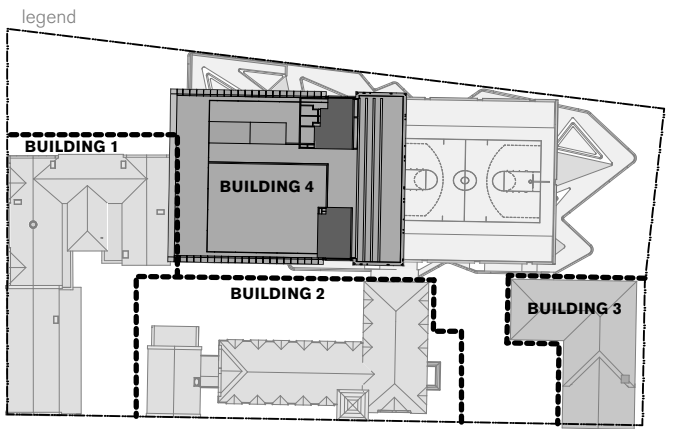


02510

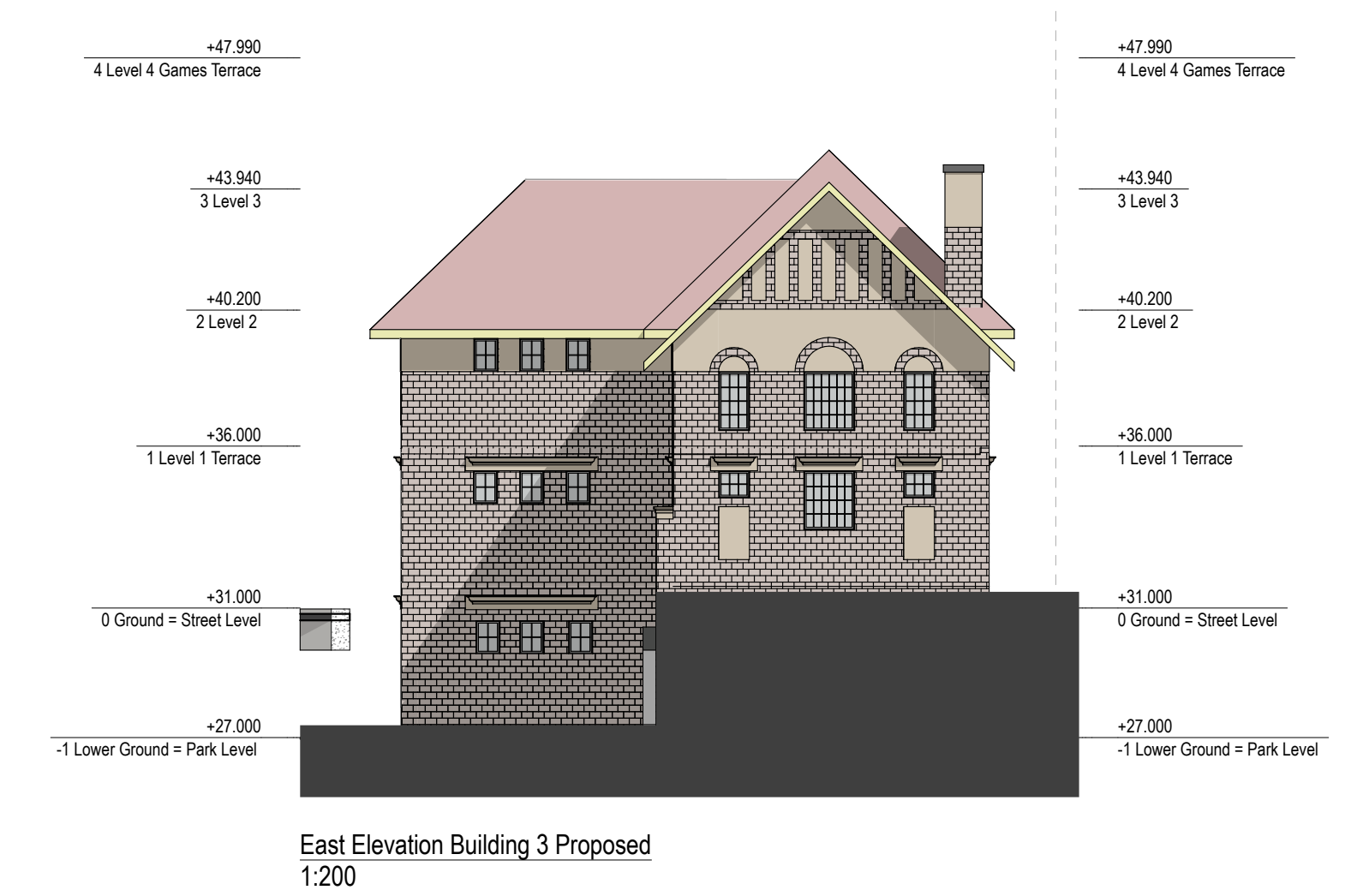
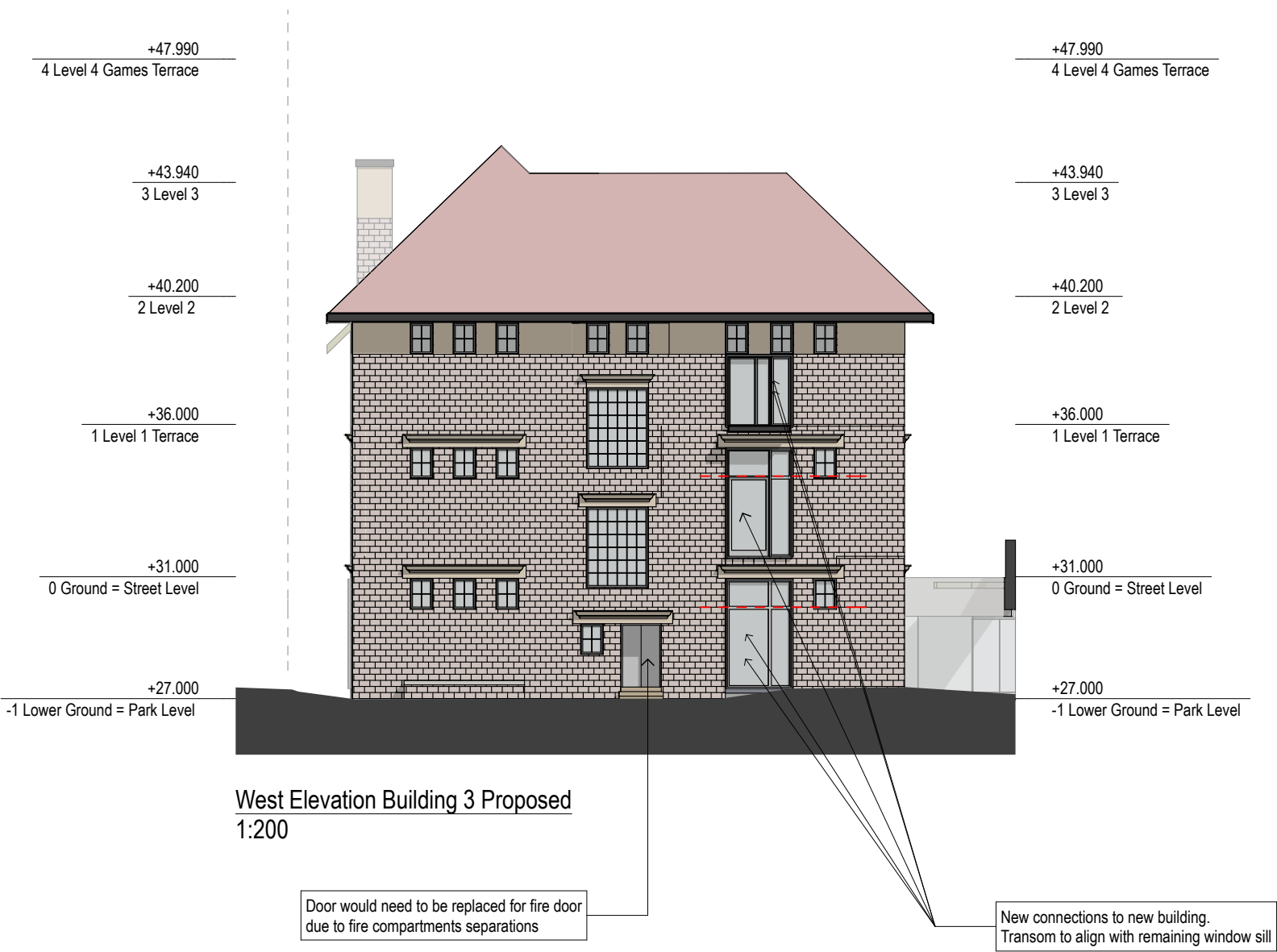
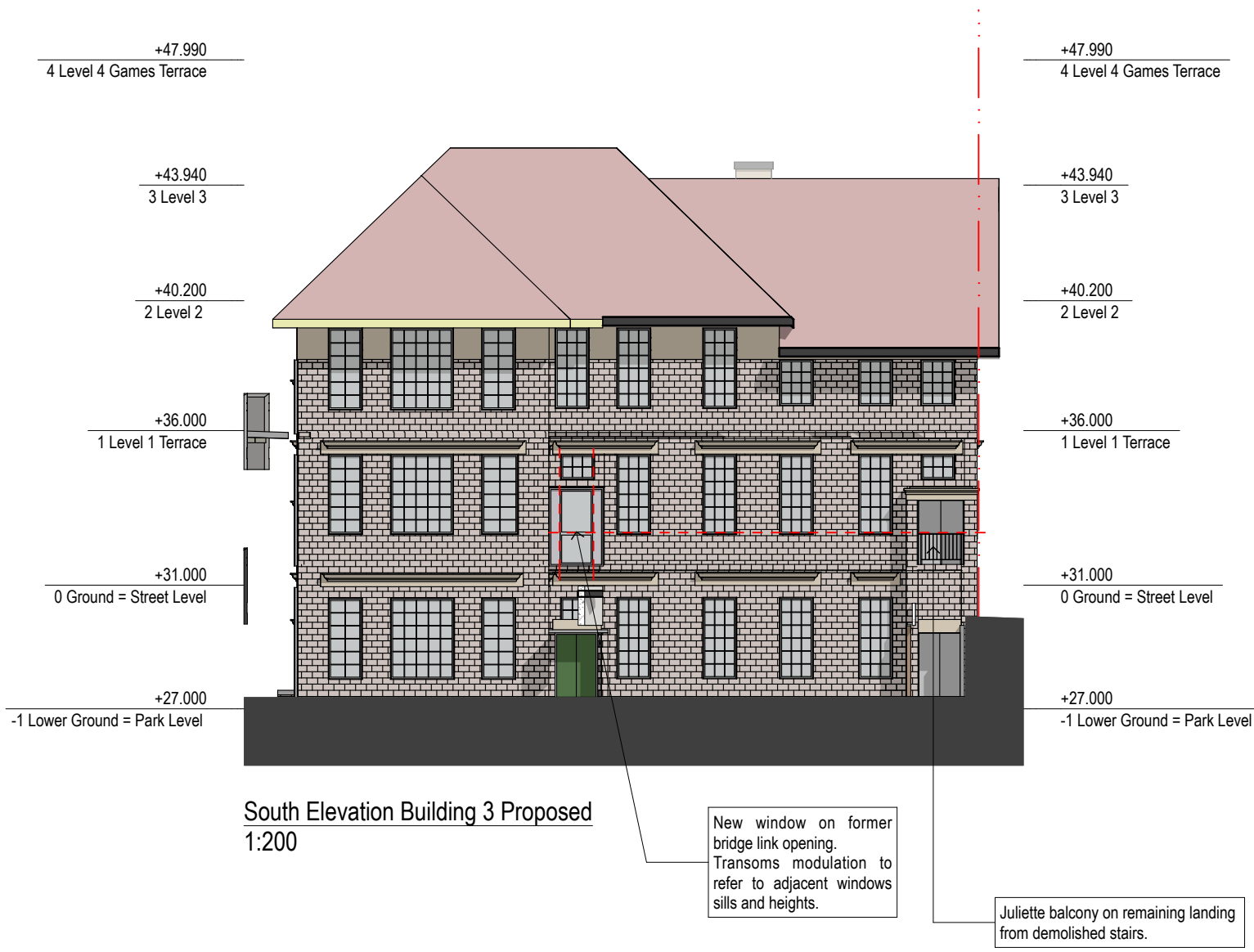
02510

GENERAL NOTES

ALL DIMENSIONS AND EXISTING CONDITIONS SHALL BE  
CHECKED AND VERIFIED BY THE CONTRACTOR  
BEFORE PROCEEDING WITH THE WORK  
ALL LEVELS RELATIVE TO 'AUSTRALIAN HEIGHT DATUM'  
DO NOT SCALE DRAWINGS  
USE FIGURED DIMENSIONS ONLY



- HERITAGE BUILDINGS NOTES
- Existing construction and dimensions shown on these documents are indicative only, and must be verified on site prior to the commencement of any construction or fabrication.
  - The contractor must approach the works in a very careful, methodical and meticulous manner. Regular on site meetings must be carried out with relevant stakeholders and contractors.



C	8/10/17	RTS Submission	CM	EC
B	20/6/17	RTS Submission	CM	EC
A	11/9/17	SSS Application	CM	EC
rev	date	name	by	chk

fjmt studio

architecture interiors landscape urban community

sydney

melbourne uk

Level 5, 70 King Street

Level 5, 70 King Street

Level 5, 70 King Street

Level 5, 70 King Street

Level 5, 70 King Street

Level 5, 70 King Street

Level 5, 70 King Street

Level 5, 70 King Street

Level 5, 70 King Street

fjmt

Level 5, 70 King Street

Level 5, 70 King Street

project

Inner Sydney High School

244 Cleveland Street

Surry Hills, Sydney NSW 2010

title

Proposed Elevations

Elevations Building 3 Proposed

scale

1:200 @ A1

first issued

11/9/17

project code

sheet no.

revision

ISHS

3203

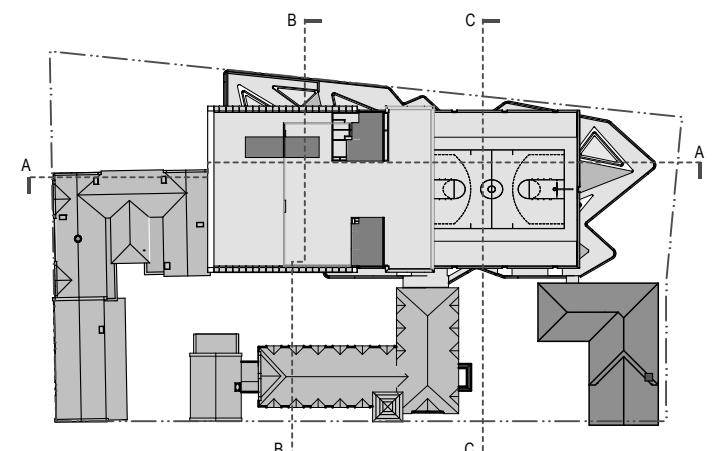
C

0 2 5 10m

**GENERAL NOTES**

- ALL DIMENSIONS AND EXISTING CONDITIONS SHALL BE CHECKED AND VERIFIED BY THE CONTRACTOR BEFORE PROCEEDING WITH THE WORK
- ALL LEVELS RELATIVE TO 'AUSTRALIAN HEIGHT DATUM'
- DO NOT SCALE DRAWINGS
- USE FIGURED DIMENSIONS ONLY

- legend
- Administration / Staff Hub
  - Student and Community Hub
  - Movement Complex
  - Learning Community - General + Fitness
  - Learning Community - Media + Performing Arts
  - Amenities, Services + Storage
  - Learning Community - General
  - Learning Community - General STE(a)M
  - Learning Community - Specialist STE(a)M
  - Learning Community - Visual Arts
  - Learning Community - Design + Technology
  - Learning Community - Food Technology



Key Plan

- REVISIONS**
- Relocation of 1 story from the Studio to the Tower resulting in a height reduction of approximately 3 metres.
  - Reduction in height of the roof top Games Court Fence.
  - Revised floor to floor heights following development of services spatial coordination.
  - Revised overall height to conceal rooftop plant and maintain a modulated silhouette of the tower forms.
  - Removal of the twisted form and realignment of the structural grid.

D	9/10/17	RTS Submission	MS	EC
C	20/9/17	RTS Submission	MS	EC
B	1/10/17	SSD Application	MS	EC
A	9/8/17	SSD Application	MS	EC
rev	date	name	by	chk

fjmt studio architecture interiors landscape urban community  
sydney melbourne uk  
Level 5, 70 King Street • +61 2 9251 7077 • [fjmtstudio.com](http://fjmtstudio.com)

project  
**Inner Sydney High School**  
244 Cleveland Street  
Surry Hills, Sydney NSW 2010

title  
**Sections**  
**Section A**

scale	1:200 @ A1	first issued	9/8/2017
project code	sheet no.	revision	
<b>ISHS</b>	<b>4001</b>		<b>D</b>

Cross Section A 1:200  
1:200





02510m

GENERAL NOTES

ALL DIMENSIONS AND EXISTING CONDITIONS SHALL BE  
CHECKED AND VERIFIED BY THE CONTRACTOR  
BEFORE PROCEEDING WITH THE WORK  
ALL LEVELS RELATIVE TO 'AUSTRALIAN HEIGHT DATUM'  
DO NOT SCALE DRAWINGS  
USE FIGURED DIMENSIONS ONLY

legend

Administration / Staff Hub

Student and Community Hub

Movement Complex

Learning Community - General + Fitness

Learning Community - Media + Performing Arts

Amenities, Services + Storage

Learning Community - General

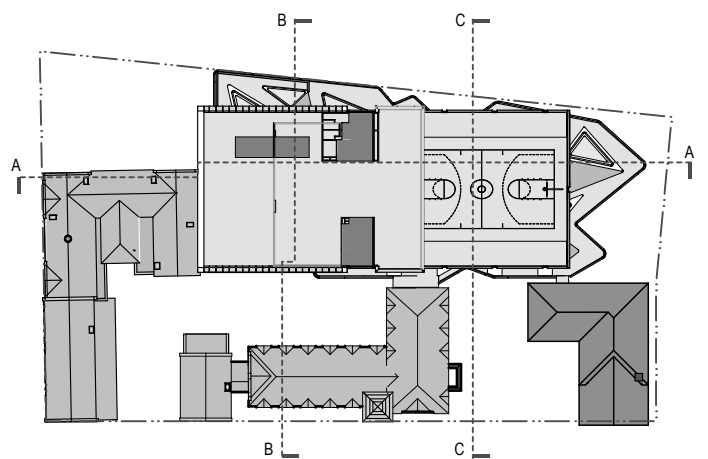
Learning Community - General STE(a)M

Learning Community - Specialist STE(a)M

Learning Community - Visual Arts

Learning Community - Design + Technology

Learning Community - Food Technology



Key Plan

- REVISIONS
- 1

Relocation of 1 story from the Studio to the Tower resulting in a height reduction of approximately 3 metres.
- 2

Revised floor to floor heights following development of services spatial coordination.
- 3

Revised overall height to conceal rooftop plant and maintain a modulated silhouette of the tower forms.
- 4

Removal of the twisted form and realignment of the structural grid.



Section B 1:200  
1:200

D	9/10/17	RTS Submission	MS	EC
C	20/9/17	RTS Submission	MS	EC
B	1/10/17	SSD Application	MS	EC
A	9/8/17	SSD Application	MS	EC
rev	date	name	by	chk

fjmt studio architecture interiors landscape urban community  
sydney melbourne uk  
Level 5, 70 King Street E +61 2 9251 7077 [fjmtstudio.com](http://fjmtstudio.com)

project  
**Inner Sydney High School**  
244 Cleveland Street  
Surry Hills, Sydney NSW 2010

title  
**Sections**  
**Section B**

scale	1:200 @ A1	first issued	9/8/2017
project code	sheet no.	revision	
ISHS	4002		D



02510

GENERAL NOTES

ALL DIMENSIONS AND EXISTING CONDITIONS SHALL BE  
CHECKED AND VERIFIED BY THE CONTRACTOR  
BEFORE PROCEEDING WITH THE WORK  
ALL LEVELS RELATIVE TO 'AUSTRALIAN HEIGHT DATUM'  
DO NOT SCALE DRAWINGS  
USE FIGURED DIMENSIONS ONLY

legend

Administration / Staff Hub

Student and Community Hub

Movement Complex

Learning Community - General + Fitness

Learning Community - Media + Performing Arts

Amenities, Services + Storage

Learning Community - General

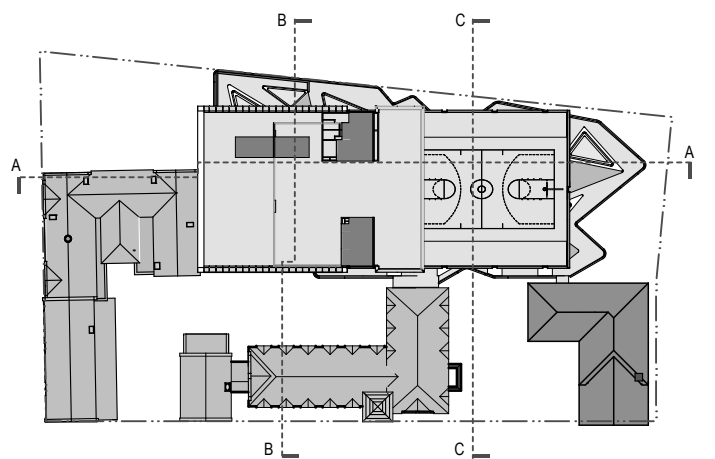
Learning Community - General STE(a)M

Learning Community - Specialist STE(a)M

Learning Community - Visual Arts

Learning Community - Design + Technology

Learning Community - Food Technology



Key Plan

- REVISIONS
- 1

Relocation of 1 story from the Studio to the Tower resulting in a height reduction of approximately 3 metres.
- 2

Reduction in height of the roof top Games Court Fence.
- 3

Revised floor to floor heights following development of services spatial coordination.



Section C 1:200  
1:200

D	9/10/17	RTS Submission	MS	EC
C	20/9/17	RTS Submission	MS	EC
B	1/10/17	SSD Application	MS	EC
A	9/8/17	SSD Application	MS	EC
rev	date	name	by	chk

fjmt studio architecture interiors landscape urban community  
sydney melbourne uk  
Level 5, 70 King Street E +61 2 9251 7077 [fjmtstudio.com](http://fjmtstudio.com)



project  
**Inner Sydney High School**  
244 Cleveland Street  
Surry Hills, Sydney NSW 2010

title  
**Sections**  
**Section C**

scale	1:200 @ A1	first issued	9/8/2017
project code	sheet no.	revision	
<b>ISHS</b>	<b>4003</b>		<b>D</b>





**GENERAL NOTES**  
ALL DIMENSIONS AND EXISTING CONDITIONS SHALL BE  
◦ CHECKED AND VERIFIED BY THE CONTRACTOR  
BEFORE PROCEEDING WITH THE WORK  
◦ ALL LEVELS RELATIVE TO 'AUSTRALIAN HEIGHT DATUM'  
◦ DO NOT SCALE DRAWINGS  
◦ USE FIGURED DIMENSIONS ONLY

Legend

- Shadows - SSD Proposed
- Shadows - Proposed
- Shadows - Overlap SSD/Current
- Shadows - Context



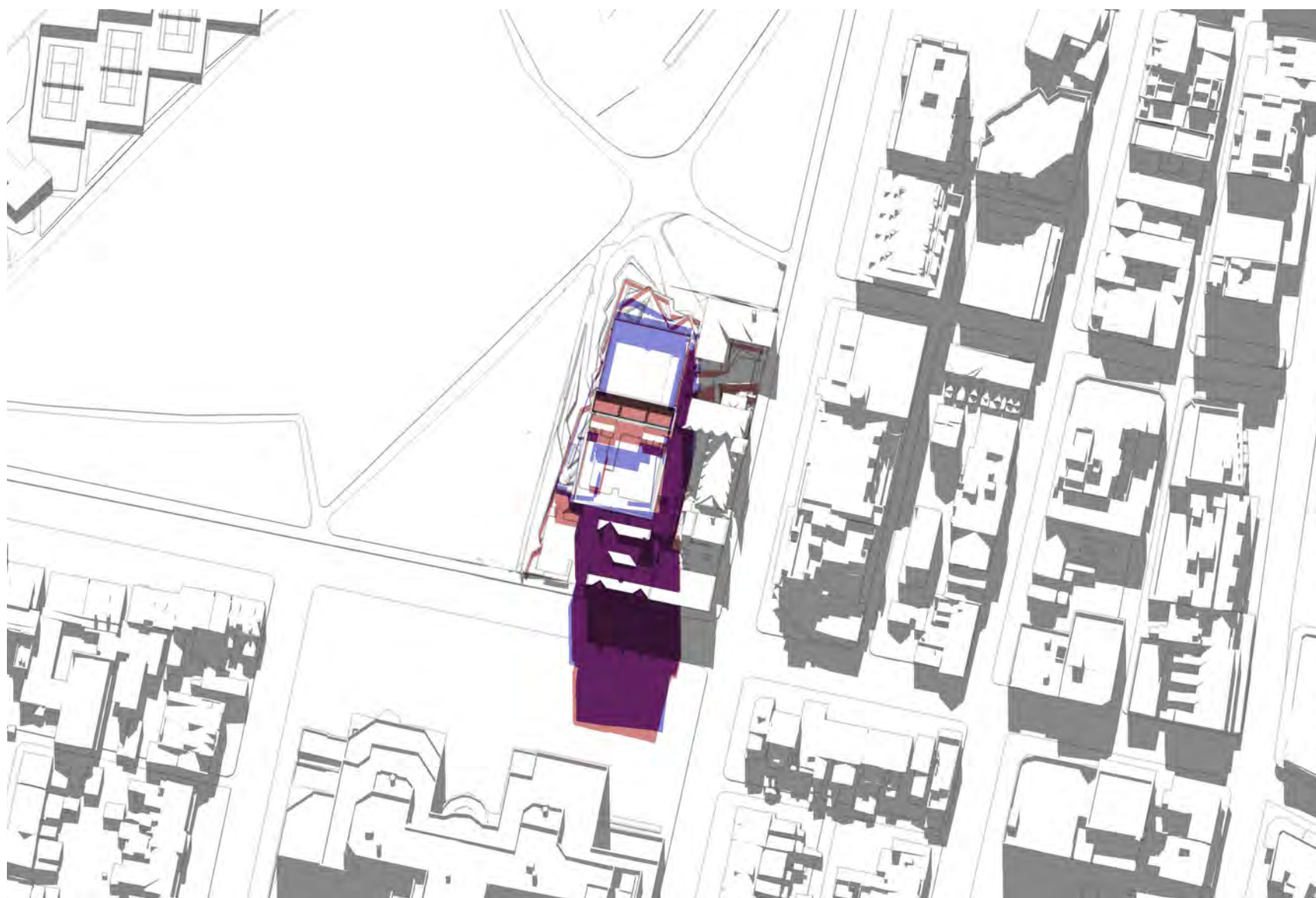
June 21st 9am



June 21st 10am



June 21st 11am



June 21st 12pm



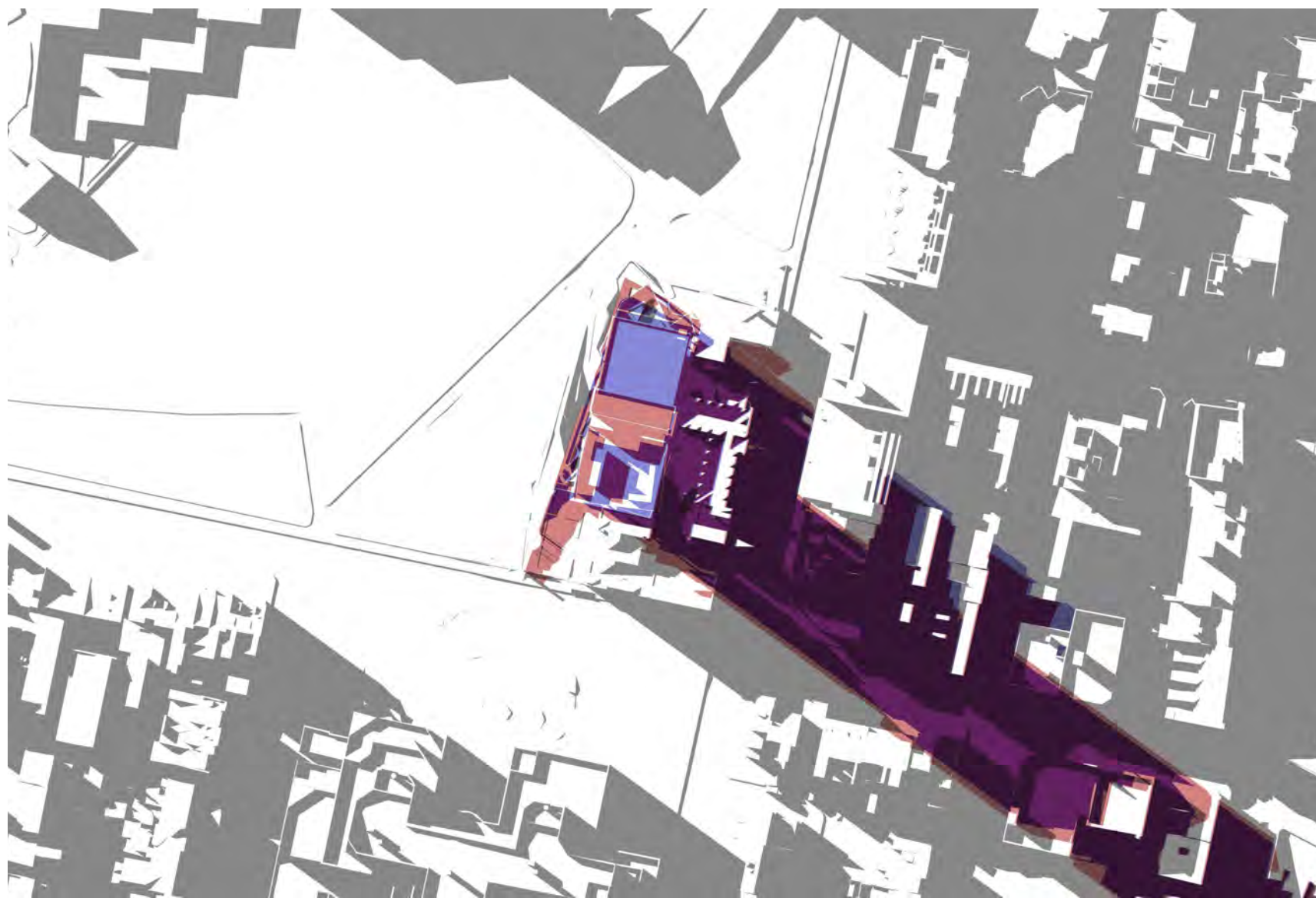
June 21st 1pm



June 21st 2pm



June 21st 3pm



June 21st 4pm

B	26/9/17	RTS	AWY
A	3/5/17	SSD Application	KT EC
rev	date	name	by chk

fjmt studio architecture interiors landscape urban community  
sydney melbourne uk  
Level 5, 70 King Street E • 61 2 9251 7077 • [fjmtstudio.com](http://fjmtstudio.com)



project  
**Inner Sydney High School**  
244 Cleveland Street  
Surry Hills, Sydney NSW 2010

title  
**Sun Studies**  
**Proposed June 21st**

scale	first issued	28/03/2017
project code	sheet no.	revision
<b>ISHS</b>	<b>6002</b>	<b>B</b>





- GENERAL NOTES**
- ALL DIMENSIONS AND EXISTING CONDITIONS SHALL BE CHECKED AND VERIFIED BY THE CONTRACTOR BEFORE PROCEEDING WITH THE WORK
  - ALL LEVELS RELATIVE TO 'AUSTRALIAN HEIGHT DATUM'
  - DO NOT SCALE DRAWINGS
  - USE FIGURED DIMENSIONS ONLY

legend

- Shadows - SSD Proposed
- Shadows - Proposed
- Shadows - Overlap SSD/Current
- Shadows - Context



December 21st 9am



December 21st 10am



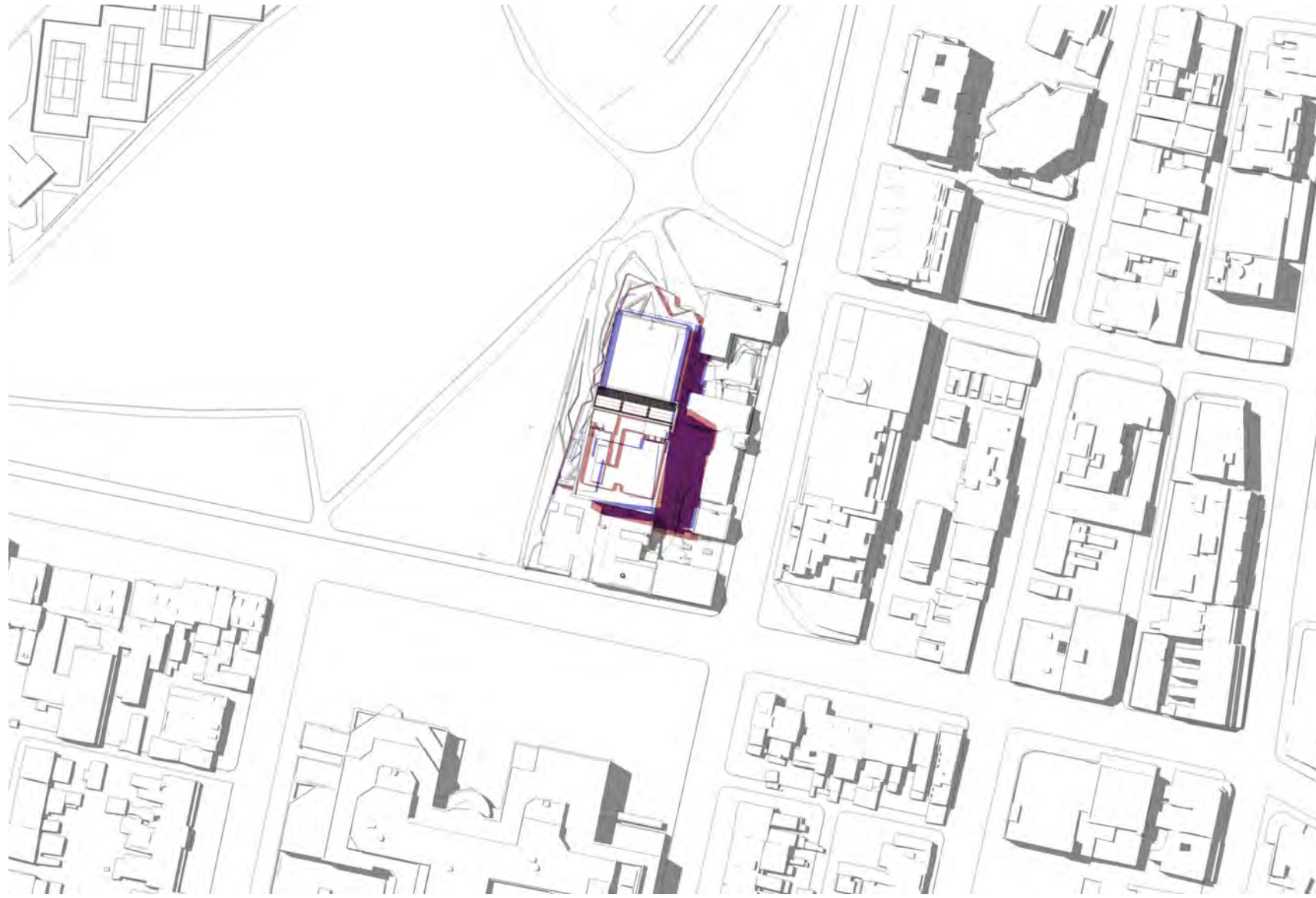
December 21st 11am



December 21st 12pm



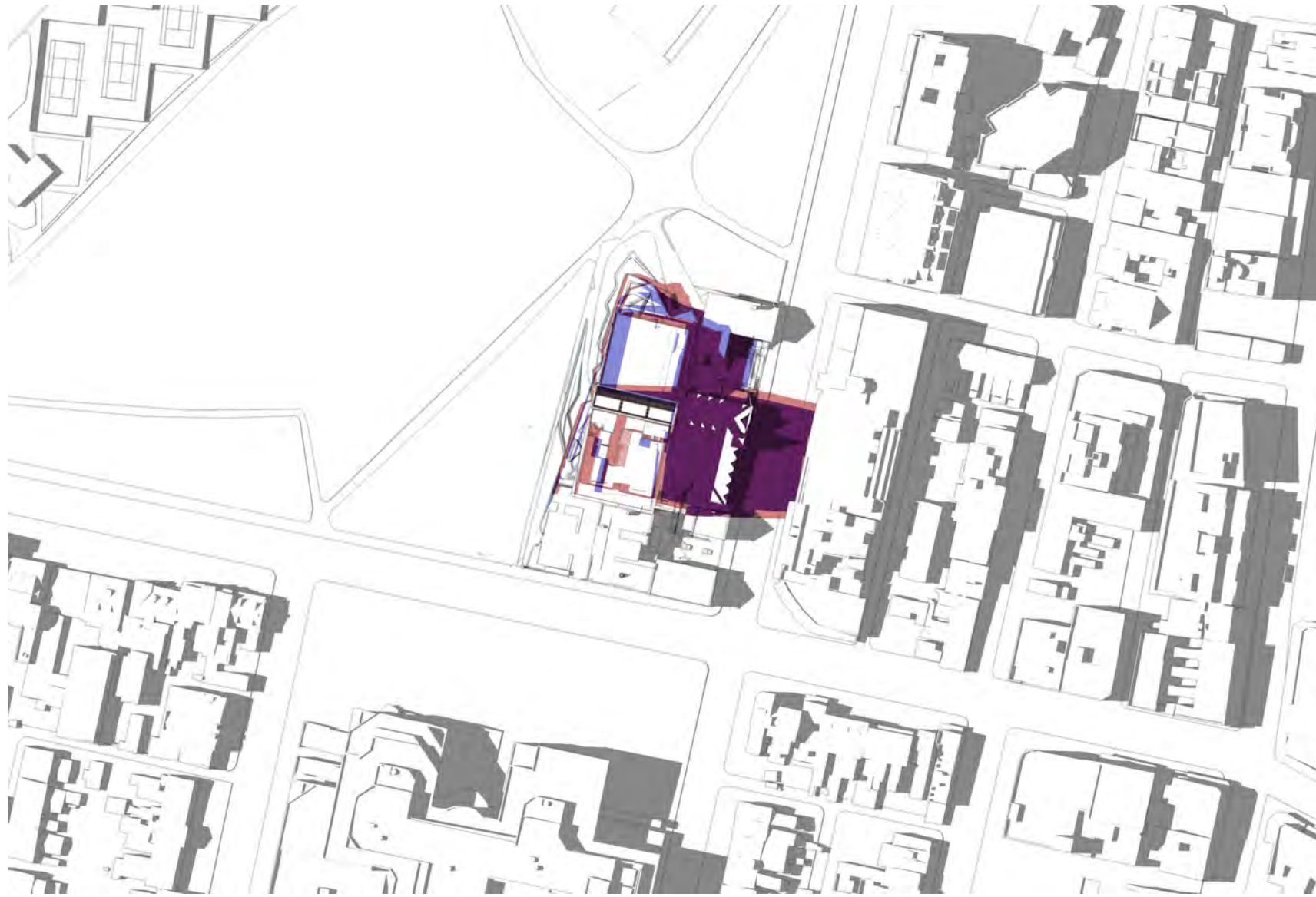
December 21st 1pm



December 21st 2pm



December 21st 3pm



December 21st 4pm

B	26/9/17	RTS	AWY
A	3/5/17	SSD Application	KT EC
rev	date	name	by chk

fjmt studio architecture interiors landscape urban community  
sydney melbourne uk  
Level 5, 70 King Street E • 61 2 9251 7077 • [fjmtstudio.com](http://fjmtstudio.com)



project  
**Inner Sydney High School**  
244 Cleveland Street  
Surry Hills, Sydney NSW 2010

title  
**Sun Studies**  
**Proposed December 21st**

scale	first issued	28/03/2017
project code	sheet no.	revision
<b>ISHS</b>	<b>6004</b>	<b>B</b>