



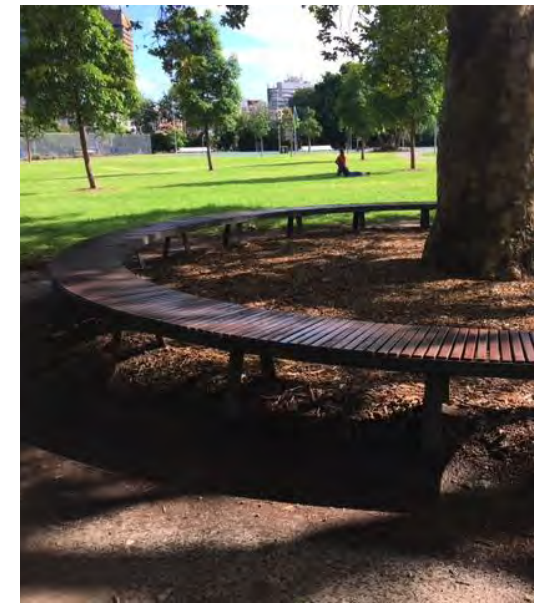
1 EXISTING CONCRETE PAVING



2 STONE PAVING WITH CURVED BANDING



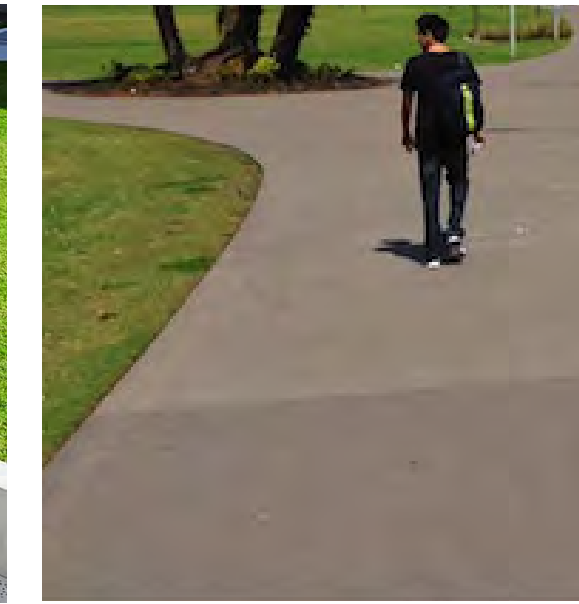
3 EXISTING HERITAGE SANDSTONE TO BE RETAINED AND PROTECTED



4 EXISTING PARK SEAT



5 CUSTOM BENCH SEAT



6 NEW CONCRETE PATH TO MATCH EXISTING



7 EXISTING PALMS



8 SANDSTONE SEATING



9 PINGPONG TABLE MULTI USES



10 ZELKOVA SERRATA



11 MACROZAMIA COMMUNIS



12 ZAMIA FURFURACEA



13 ISOLEPIS NODOSA



15 AMPHITHEATRE WITH TIMBER SEATING STEPS



16 NATIVE GRASSES

**GENERAL NOTES**

- ALL DIMENSIONS AND EXISTING CONDITIONS SHALL BE CHECKED AND VERIFIED BY THE CONTRACTOR BEFORE PROCEEDING WITH THE WORK
- ALL LEVELS RELATIVE TO 'AUSTRALIAN HEIGHT DATUM'
- DO NOT SCALE DRAWINGS
- USE FIGURED DIMENSIONS ONLY

**Legend**

- SITE BOUNDARY
- EXISTING SPOT LEVEL
- EXISTING KERB LEVEL
- PROPOSED SPOT LEVEL
- TOP OF FENCE
- EXISTING LIGHT POLE
- EXISTING SERVICES/ UTILITIES
- ASPHALT
- CONCRETE FOOTPATH
- STONE PAVING
- CONCRETE PAVING - WITH VARIOUS FINISHES AND COLOUR PATTERNS
- FEATURE BANDING PATTERNS
- BRICK AND SANDSTONE
- TURF
- TREE TO BE RETAINED
- PROPOSED TREE EX GROUND 6M HIGH
- PROPOSED SHRUB
- AMENITY PLANTING
- MPB1 GARDEN PROFILE ON GRADE - 75MM MULCH - 300MM IMPORTED GARDENSIOIL - 200MM CULTIVATED SUBGRADE
- MPB2 GARDEN PROFILE ON STRUCTURE - 75MM MULCH - 600MM IMPORTED GARDENSIOIL - 100MM SAND FILLER LAYER - 50MM DRAINAGE CELL
- BRK1 BIKE HOOP
- GRD1 GRATED DRAIN
- HR1 HANDRAIL
- STE1 STAINLESS STEEL EDGE
- CUSTOM BENCH SEATS - SOLID SANDSTONE BLOCKS WITH TIMBER

**DRIP IRRIGATION TO ALL PLANTER ON STRUCTURE**

- REVISIONS**
- Design Development of Podium Form and the relationship of ground plane and park
  - Realignment and separation of eastern infill to provide additional clearances from heritage fabric and increased amenity.
  - Development of carpark design in response to flood mitigation.
  - Revised levels to facilitate building access.
  - Development of park entry in response to flood mitigation.

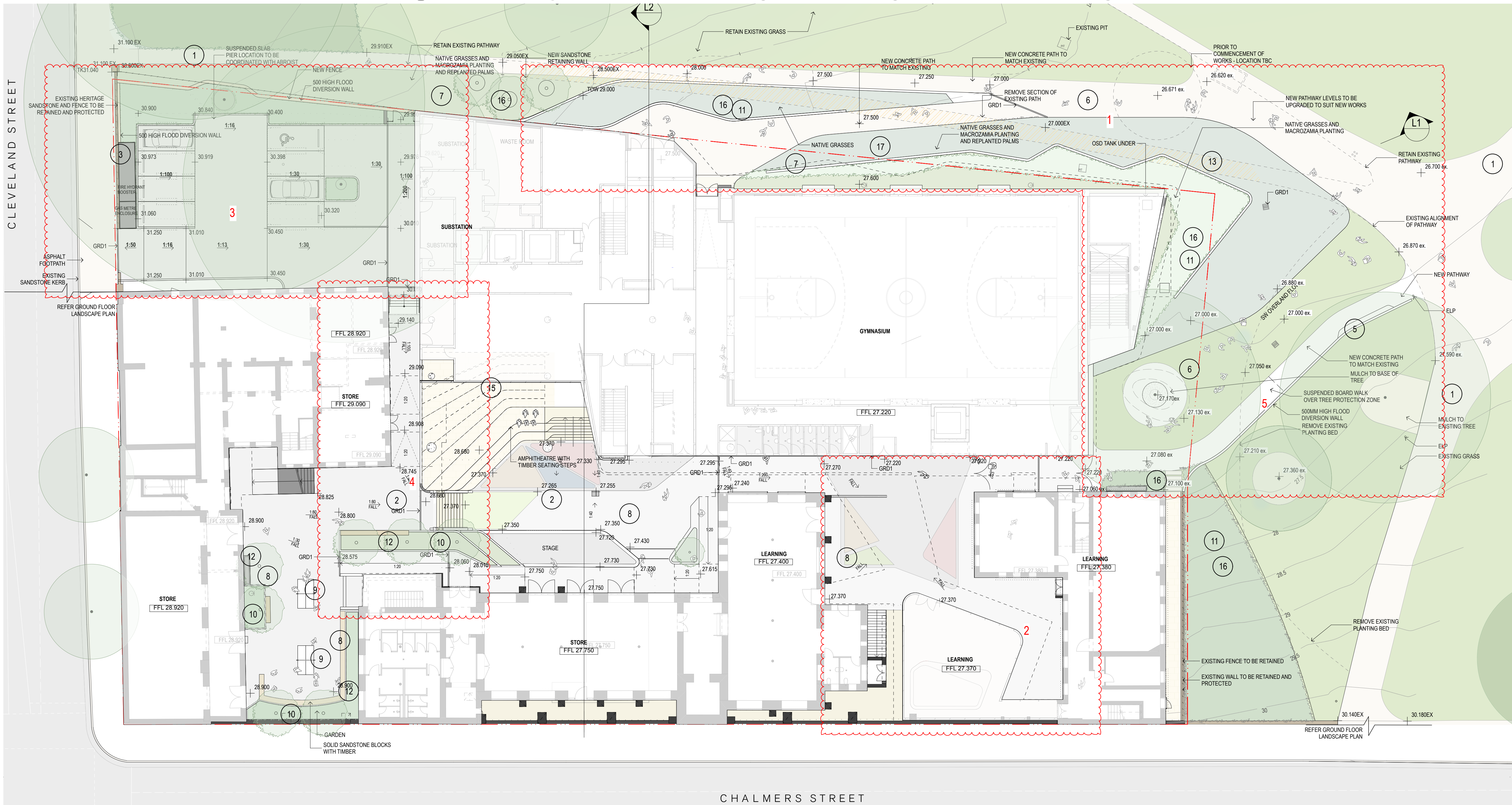
D	9/10/17	RTS Submission	EG	NM
C	20/8/17	RTS Submission	EG	NM
B	9/6/17	SSS Submission	EG	NM
A	9/6/17	SSS Submission	EG	NM
rev	date	name	by	chk

fjmt studio architecture interiors landscape urban community  
sydney melbourne uk  
Level 5, 70 King Street E +61 2 9251 7077 www.fjmtstudio.com

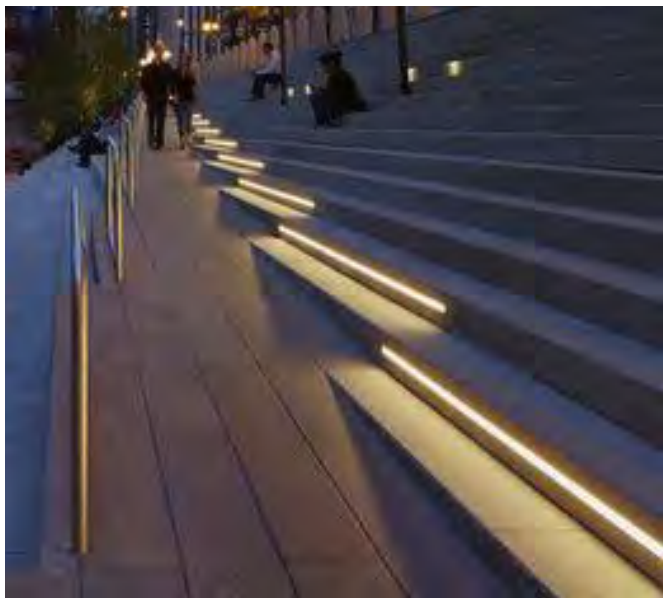
Project  
**Inner Sydney High School**  
244 Cleveland Street  
Surry Hills, Sydney NSW 2010

Title  
**Landscape**  
Lower Ground Landscape Plan

scale	1:200 @ A1	first issued	28/03/2017
project code	ISHS	sheet no.	8001
		revision	D







1 STEPS WITH LIGHTING



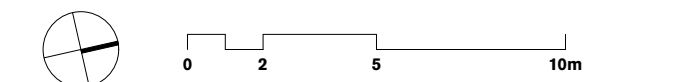
2 STONE PAVING WITH CURVED BANDING



3 EXISTING HERITAGE SANDSTONE TO BE RETAINED AND PROTECTED



4 RAISED PLANTER WITH RECLINING SEATS



- GENERAL NOTES**
- ALL DIMENSIONS AND EXISTING CONDITIONS SHALL BE CHECKED AND VERIFIED BY THE CONTRACTOR BEFORE PROCEEDING WITH THE WORK
  - ALL LEVELS RELATIVE TO 'AUSTRALIAN HEIGHT DATUM'
  - DO NOT SCALE DRAWINGS
  - USE FIGURED DIMENSIONS ONLY

legend

- SITE BOUNDARY
- +27.190ex EXISTING SPOT LEVEL
- +TK27.190 TOP OF KERB LEVEL
- +30.600 PROPOSED SPOT LEVEL
- TOW TOP OF WALL
- TOP OF FENCE
- ELP EXISTING LIGHT POLE
- EXISTING SERVICES/ UTILITIES
- ASPHALT
- CONCRETE FOOTPATH
- STONE PAVING
- CONCRETE PAVING - WITH VARIED FINISHES AND COLOUR PATTERNS
- FEATURE BANDING PATTERNS
- BRICK AND SANDSTONE
- TURF
- TREE TO BE RETAINED
- PROPOSED TREE EX GROUND 6M HIGH
- PROPOSED SHRUB
- AMENITY PLANTING
- MPB1 GARDEN PROFILE ON GRADE  
-75MM MULCH  
-300MM IMPORTED GARDENSOIL  
-200MM CULTIVATED SUBGRADE
- MPB2 GARDEN PROFILE ON STRUCTURE  
-75MM MULCH  
-600MM IMPORTED GARDENSOIL  
-100MM SAND FILLER LAYER  
-50MM DRAINAGE CELL
- BRK1 BIKE HOOP
- GRD1 GRATED DRAIN
- HR1 HANDRAIL
- STE1 STAINLESS STEEL EDGE
- CUSTOM BENCH SEATS  
-SOLID SANDSTONE BLOCKS WITH TIMBER

DRIP IRRIGATION TO ALL PLANTER ON STRUCTURE

REVISIONS

- Design Development of Podium Form and the relationship of ground plane and park
- Detailed review and development of existing building levels and the provision of compliant equitable access to all areas

D	9/10/17	RTS Submission	EG	NM
C	20/8/17	RTS Submission	EG	NM
B	9/6/17	SSD Submission	EG	NM
A	9/6/17	SSD Submission	EG	NM
rev	date	name	by	chk

fjmt studio architecture interiors landscape urban community  
sydney melbourne uk  
Level 5, 70 King Street E +61 2 9251 7077 w fjmtstudio.com

project  
**Inner Sydney High School**  
**244 Cleveland Street**  
**Surry Hills, Sydney NSW 2010**

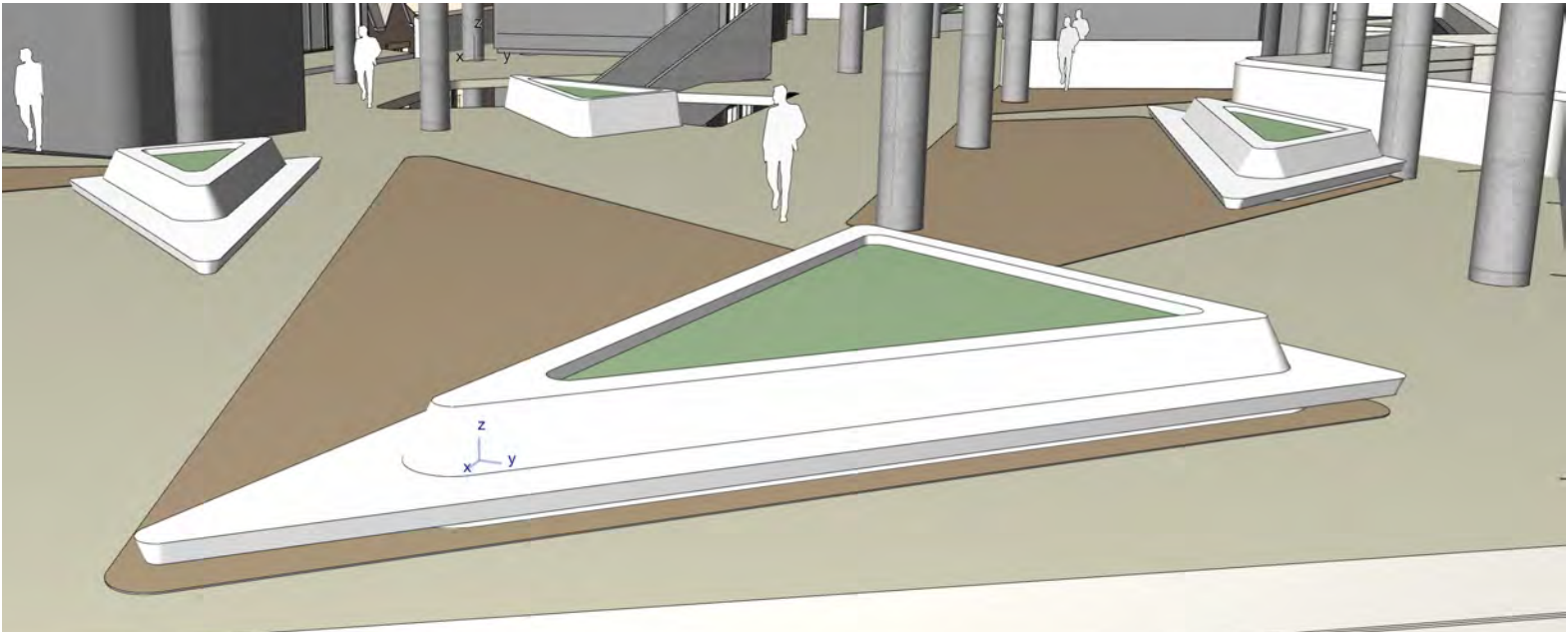
title  
**Landscape**  
**Ground Floor Landscape Plan**

scale 1:200 @ A1 first issued 28/03/2017

project code sheet no. revision  
ISHS 8002 D







1 3D VIEW RAISED PLANTER WITH RECLINING SEAT  
1:2.1999



2 RAISED PLANTER WITH RECLINING SEAT



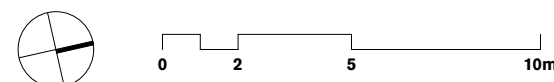
3 HANGING CHAIRS  
FUTURE /POTENTIAL FURNITURE



4 HANGING GARDEN  
FUTURE /POTENTIAL FURNITURE



5 HANGING NETS  
FUTURE /POTENTIAL FURNITURE



- GENERAL NOTES**
- ALL DIMENSIONS AND EXISTING CONDITIONS SHALL BE CHECKED AND VERIFIED BY THE CONTRACTOR BEFORE PROCEEDING WITH THE WORK
  - ALL LEVELS RELATIVE TO 'AUSTRALIAN HEIGHT DATUM'
  - DO NOT SCALE DRAWINGS
  - USE FIGURED DIMENSIONS ONLY

legend

- SITE BOUNDARY
- +27.190ex EXISTING SPOT LEVEL
- +TK27.190 TOP OF KERB LEVEL
- +30.600 PROPOSED SPOT LEVEL
- TOW TOP OF WALL
- ELP TOP OF FENCE
- EXISTING LIGHT POLE
- EXISTING SERVICES/ UTILITIES
- ASPHALT
- CONCRETE FOOTPATH
- STONE PAVING
- CONCRETE PAVING - WITH VARIED FINISHES AND COLOUR PATTERNS
- FEATURE BANDING PATTERNS BRICK AND SANDSTONE
- TURF
- TREE TO BE RETAINED
- PROPOSED TREE EX GROUND 6M HIGH
- PROPOSED SHRUB
- AMENITY PLANTING
- MPB1 GARDEN PROFILE ON GRADE  
-75MM MULCH  
-300MM IMPORTED GARDENSOIL  
-200MM CULTIVATED SUBGRADE
- MPB2 GARDEN PROFILE ON STRUCTURE  
-75MM MULCH  
-600MM IMPORTED GARDENSOIL  
-100MM SAND FILLER LAYER  
-50MM DRAINAGE CELL
- BRK1 BIKE HOOP
- GRD1 GRATED DRAIN
- HR1 HANDRAIL
- STE1 STAINLESS STEEL EDGE
- CUSTOM BENCH SEATS  
-SOLID SANDSTONE BLOCKS WITH TIMBER

DRIP IRRIGATION TO ALL PLANTER ON STRUCTURE

REVISIONS

- 1 Design Development of Podium Form and the relationship of ground plane and park

D	9/10/17	RTS Submission	EG	NM
C	20/8/17	RTS Submission	EG	NM
B	9/8/17	SSD Submission	EG	NM
A	9/8/17	SSD Submission	EG	NM
rev	date	name	by	chk

fjmt studio architecture interiors landscape urban community  
sydney melbourne uk  
Level 5, 70 King Street E +61 2 9251 7077 [fjmtstudio.com](http://fjmtstudio.com)

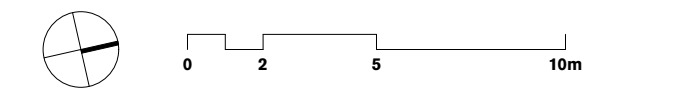
project  
**Inner Sydney High School**  
**244 Cleveland Street**  
**Surry Hills, Sydney NSW 2010**

title  
Landscape  
Level 1 Landscape Plan

scale 1:200 @ A1 first issued 28/03/2017

project code sheet no. revision  
ISHS 8003 D



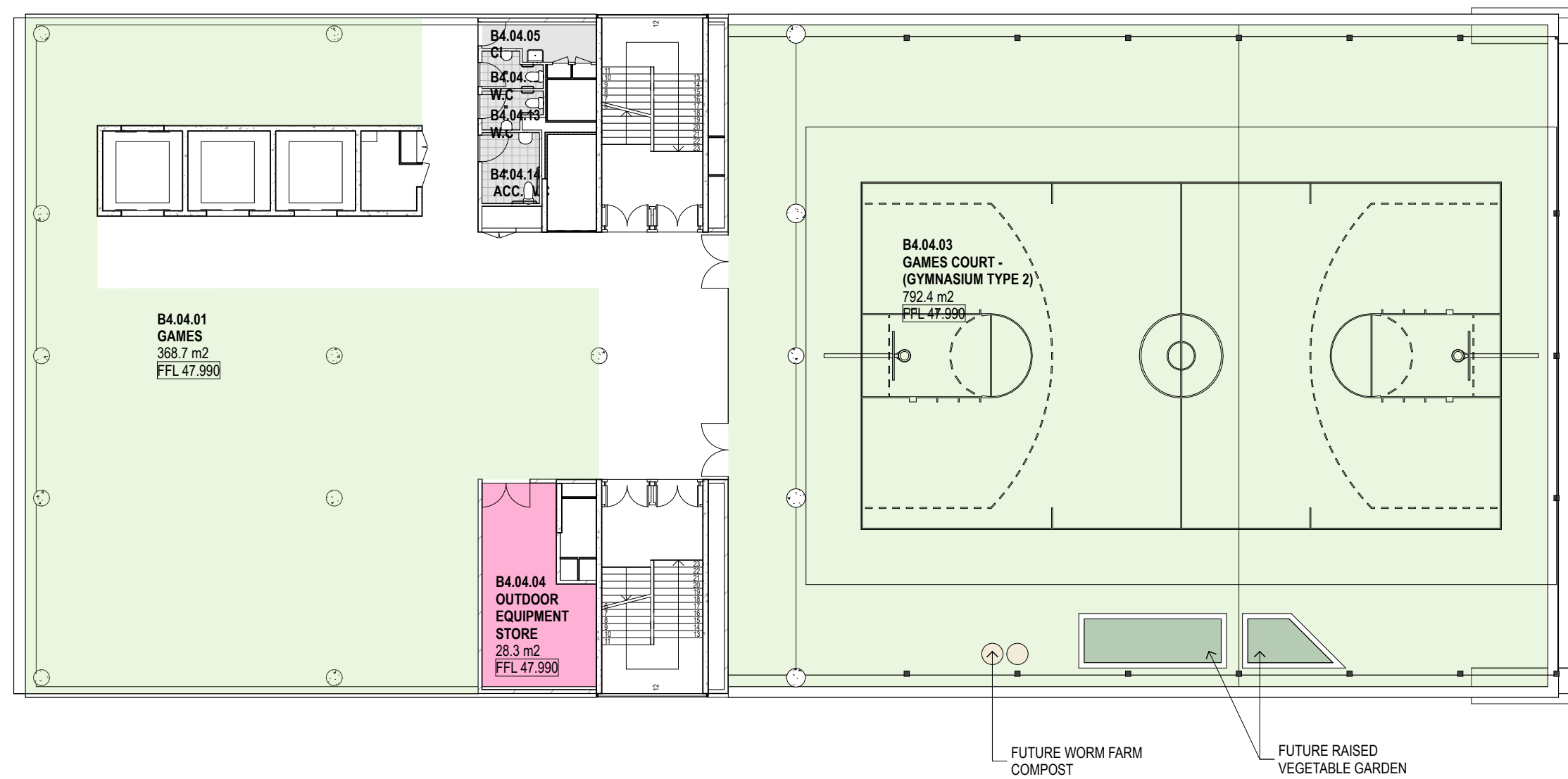


- GENERAL NOTES**
- ALL DIMENSIONS AND EXISTING CONDITIONS SHALL BE CHECKED AND VERIFIED BY THE CONTRACTOR BEFORE PROCEEDING WITH THE WORK
  - ALL LEVELS RELATIVE TO 'AUSTRALIAN HEIGHT DATUM'
  - DO NOT SCALE DRAWINGS
  - USE FIGURED DIMENSIONS ONLY

legend	
	SITE BOUNDARY
	EXISTING SPOT LEVEL
	TOP OF KERB LEVEL
	PROPOSED SPOT LEVEL
	TOW TOP
	EXISTING LIGHT POLE
	EXISTING SERVICES/ UTILITIES
	ASPHALT
	CONCRETE FOOTPATH
	STONE PAVING
	CONCRETE PAVING - WITH VARIED FINISHES AND COLOUR PATTERNS
	FEATURE BANDING PATTERNS BRICK AND SANDSTONE
	TURF
	TREE TO BE RETAINED
	PROPOSED TREE EX GROUND 6M HIGH
	PROPOSED SHRUB
	AMENITY PLANTING
MPB1	GARDEN PROFILE ON GRADE -75MM MULCH -300MM IMPORTED GARDENSOIL -200MM CULTIVATED SUBGRADE
MPB2	GARDEN PROFILE ON STRUCTURE -75MM MULCH -600MM IMPORTED GARDENSOIL -100MM SAND FILLER LAYER -50MM DRAINAGE CELL
BRK1	BIKE HOOP
GRD1	GRATED DRAIN
HR1	HANDRAIL
STE1	STAINLESS STEEL EDGE
	CUSTOM BENCH SEATS -SOLID SANDSTONE BLOCKS WITH TIMBER

DRIP IRRIGATION TO ALL PLANTER ON STRUCTURE

1 PLAN LEVEL 4 LANDSCAPE PLAN  
1:200



2 BEEHIVES HONEY COLLECTION  
FUTURE PROTENTIAL FURNITURE



3 DRAWING TYPE FUTURE RAISED VEGETABEL GARDEN



D	9/10/17	RTS Submission	EG	NM
C	20/8/17	RTS Submission	EG	NM
B	9/6/17	SSD Submission	EG	NM
A	9/6/17	SSD Submission	EG	NM
rev	date	name	by	chk

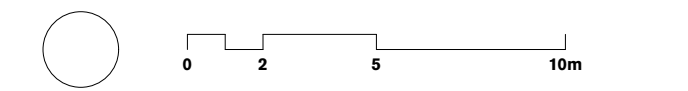
**fjmt studio** architecture interiors landscape urban community  
sydney melbourne uk  
Level 5, 70 King Street t +61 2 9251 7077 w [fjmtstudio.com](http://fjmtstudio.com)

project  
**Inner Sydney High School**  
**244 Cleveland Street**  
**Surry Hills, Sydney NSW 2010**

title  
Landscape  
Level 4 Landscape Plan

scale	1:200 @ A1	first issued	28/03/2017
project code	sheet no.	revision	
ISHS	8004	D	





**GENERAL NOTES**

- ALL DIMENSIONS AND EXISTING CONDITIONS SHALL BE CHECKED AND VERIFIED BY THE CONTRACTOR BEFORE PROCEEDING WITH THE WORK
- ALL LEVELS RELATIVE TO 'AUSTRALIAN HEIGHT DATUM'
- DO NOT SCALE DRAWINGS
- USE FIGURED DIMENSIONS ONLY

legend

- SITE BOUNDARY
- +27.190ex EXISTING SPOT LEVEL
- +TK27.190 TOP OF KERB LEVEL
- +30.600 PROPOSED SPOT LEVEL
- TOW TOP OF WALL
- ELP EXISTING LIGHT POLE
- EXISTING SERVICES/ UTILITIES
- ASPHALT
- CONCRETE FOOTPATH
- STONE PAVING
- CONCRETE PAVING - WITH VARIED FINISHES AND COLOUR PATTERNS
- FEATURE BANDING PATTERNS
- BRICK AND SANDSTONE
- TURF
- TREE TO BE RETAINED
- PROPOSED TREE EX GROUND 6M HIGH
- PROPOSED SHRUB
- AMENITY PLANTING
- MPB1 GARDEN PROFILE ON GRADE
  - 75MM MULCH
  - 300MM IMPORTED GARDENSOIL
  - 200MM CULTIVATED SUBGRADE
- MPB2 GARDEN PROFILE ON STRUCTURE
  - 75MM MULCH
  - 600MM IMPORTED GARDENSOIL
  - 100MM SAND FILLER LAYER
  - 50MM DRAINAGE CELL
- BRK1 BIKE HOOP
- GRD1 GRATED DRAIN
- HR1 HANDRAIL
- STE1 STAINLESS STEEL EDGE
- CUSTOM BENCH SEATS
- SOLID SANDSTONE BLOCKS WITH TIMBER

DRIP IRRIGATION TO ALL PLANTER ON STRUCTURE

REVISIONS

1 Design Development of Podium Form and the relationship of ground plane and park

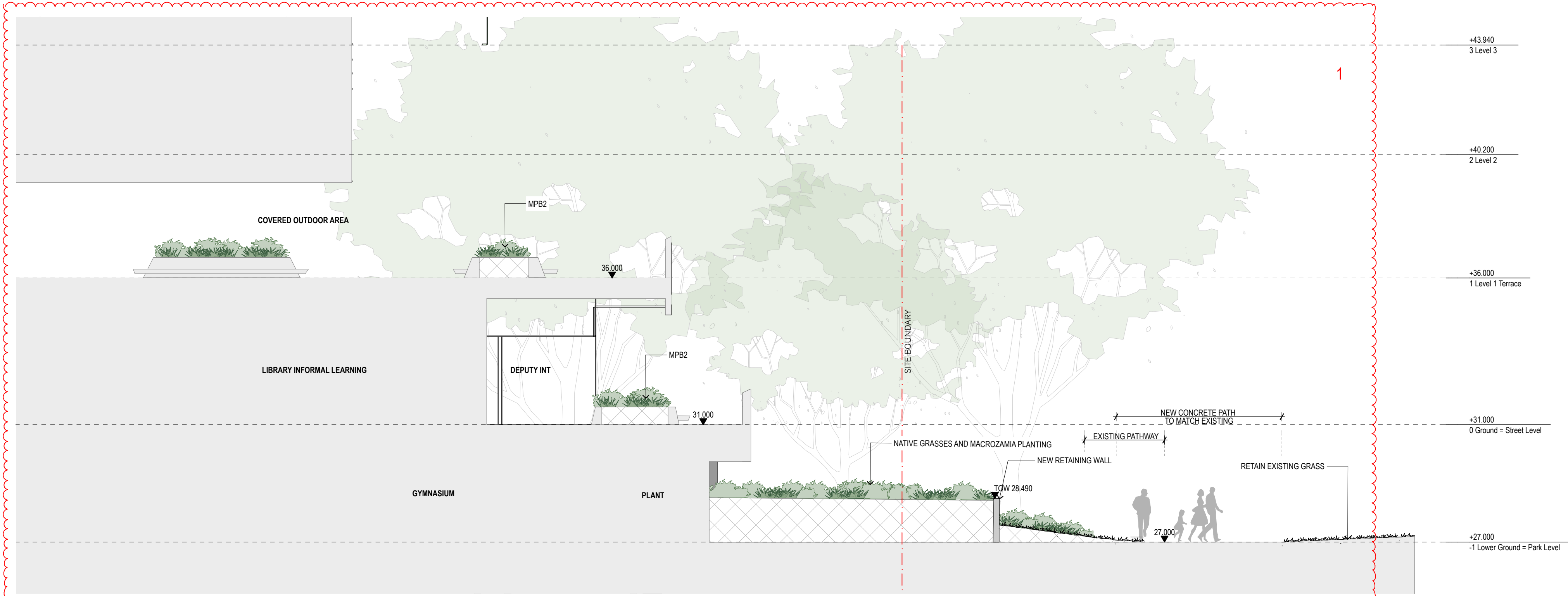
D	9/10/17	RTS Submission	EG	NM
C	20/8/17	RTS Submission	EG	NM
B	9/6/17	SSD Submission	EG	NM
A	9/6/17	SSD Submission	EG	NM
rev	date	name	by	chk

**fjmt studio** architecture interiors landscape urban community  
sydney melbourne uk  
Level 5, 70 King Street t +61 2 9251 7077 w [fjmtstudio.com](http://fjmtstudio.com)

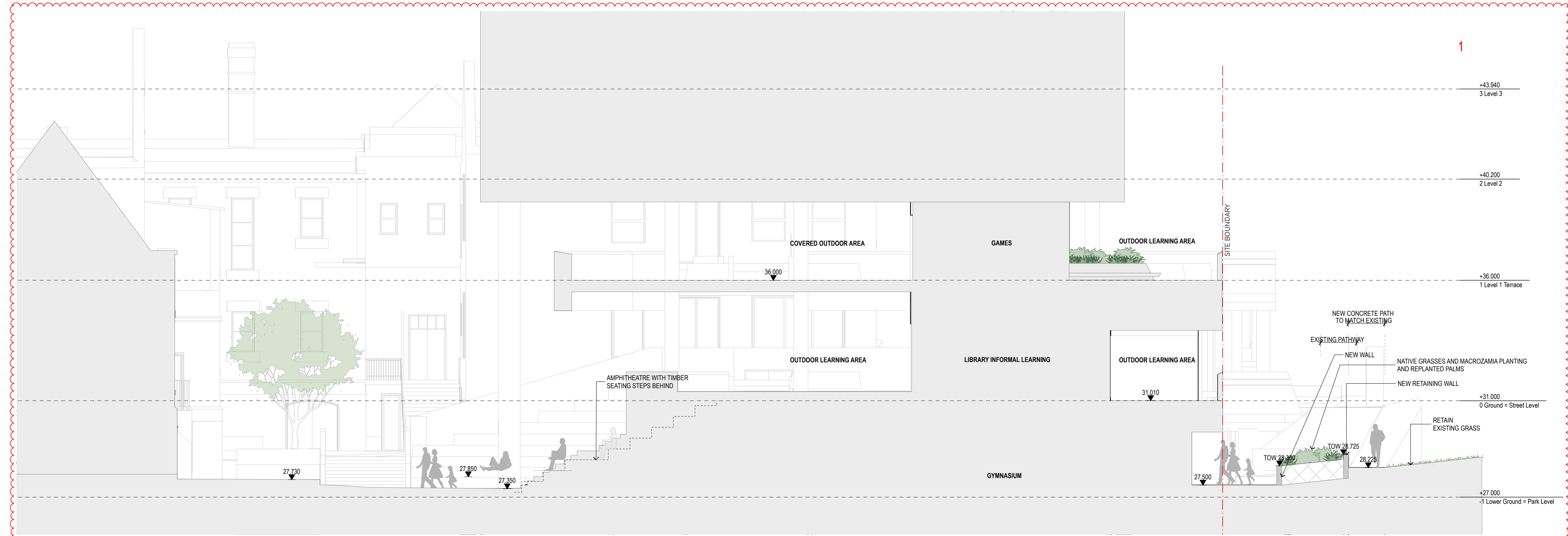
project  
**Inner Sydney High School**  
**244 Cleveland Street**  
**Surry Hills, Sydney NSW 2010**

title  
Landscape  
Landscape Sections

scale	1:200 @ A1	first issued	28/03/2017
project code	sheet no.	revision	
ISHS	8101	D	



1 SECTION 01 Interface with Park  
1:100



2 SECTION 02  
1:100