



Inner City High School, Surry Hills



Contents

Part I	Inner City Public High Schools Map
	Aerial Photo
	Locality Map
	Wider Vicinity and Prince Alfred Park
	School Site Map
	Site Survey June, 2015
	Tree Retention Value
	Climate and Weather
	Accessibility and Traffic
	Heritage
	Heritage – Building Chronology
	Heritage – Building Significance
	Heritage – Heritage Listing Status
	Sydney Local Environment Plan 2012
	Existing Buildings – Floor Area, Site Sections and Shadow diagram
	Site Planning Constraints – New Building Footprint
Part II	Design Brief
	Education Planning Principles
	Accommodation Schedule
	Accommodation Schedule Diagram
	Existing Building – Utilisation – Park Level
	Existing Building – Utilisation – Street Level
	Existing Building – Utilisation – First Floor
	Concept
	Site Plan
	Indicative Envelope



Master Plan Project Team

Principal Design Consultant	Perumal Pedavoli Pty Limited
Landscape Consultant	Tract Consultants
QS Services	MBMpl Pty Ltd
Heritage Consultant	Perumal Murphy Alessi
Arborist	Earthscape Horticultural Services

Inner City High School, Surry Hills

Project Brief

Education Planning Principles

School Specific Education Planning Principles were developed in the Project Advisory Group Forum

Focus on the needs of learners and learning
Create a stimulating teaching and learning environment with a focus on student wellbeing and staff welfare
Promote team work in groups, classes, grades and whole school activities
Create a variety of collaborative, student-centred learning spaces to cater for a range of student needs and learning styles, maximising its use and creating a sense of openness and light
Providing a central focal area where students, teachers and families can communicate
Ensure noise from nearby roads is minimised within the school environment, classrooms and outdoor spaces
Create a safe, secure environment for students, staff and visitors
Create flexible spaces to promote communication between staff for both group and individual work.
Build community and identity and create a culture of welcome, inclusion and belonging that reflects and respects diversity within the school's community.
Respect and celebrate the history of the site and area
Provide a school which is open, inclusive and welcoming
Ensure the school entrance and administration office are easily found, identifiable and are welcoming
Maximise opportunities for community use of the school and grounds by making school accessible after-hours, while also enabling the school to be secured after-hours
Create a park within a school, connecting teaching and learning spaces with the park to create a physical sense of community
Be aesthetically pleasing.
Create inviting, pleasant spaces for learners and learning
Building structures that promote the connection of people to the natural environment
Maximise the views of the park and the city from within the site and learning spaces
Provide contemporary, sustainable learning environments.
Creating space and structures for outdoor learning
Create a high tech school that exemplifies the future focussed learning environment
Embed future focussed proven technologies within the site to minimise future energy use, exploring tri-generation, solar, wind and thermal power where possible
Embed the potential for re-configurability, both in the present for multi-purpose use and over time for changing needs.
Provide flexible, diverse and accessible teaching and learning spaces to enable future focused learning and learning choice over time
Maximise use of the site
Create efficient student movement around the school

Inner City High School, Surry Hills

Project Brief

Accommodation Schedule

		1200 Students 16-Jul-15
HS401	General Learning Unit	2,108
HS402	Senior Learning Unit - Type 1	527
HS404	Science Learning Unit	783
HS405	Visual Arts Learning Unit	586
HS406	Performance Learning Unit	520
HS408	Fitness Learning Unit	294
HS409	Materials Learning Unit - Type 1	569
HS410	Materials Learning Unit - Type 2	320
HS414	Materials Learning Unit - Type 4	
HS501	Library	746
HS502	Movement Complex	1,602
HS503	Outdoor Covered Workshop	120
HS504	Outdoor Learning	270
HS601	Administration	304
HS602	Staff	715
HS603	Student Services	286
HS604	Canteen	69
HS605	Storage	60
HS606	Covered Outdoor Space	150
HS611	Services	28
TOTAL Useable Floor Area		10,057
TOTAL Gross Floor Area (DoE)		12,068
Services and circulation 25%		3,017
HS505	Games	1,292
HS607	Assembly Quadrangle	1,090
HS608	Pedestrian Circulation	
HS609	Vehicular Circulation	
HS610	Open Space	
HS612	Site	
TOTAL AREA sqm		17,468

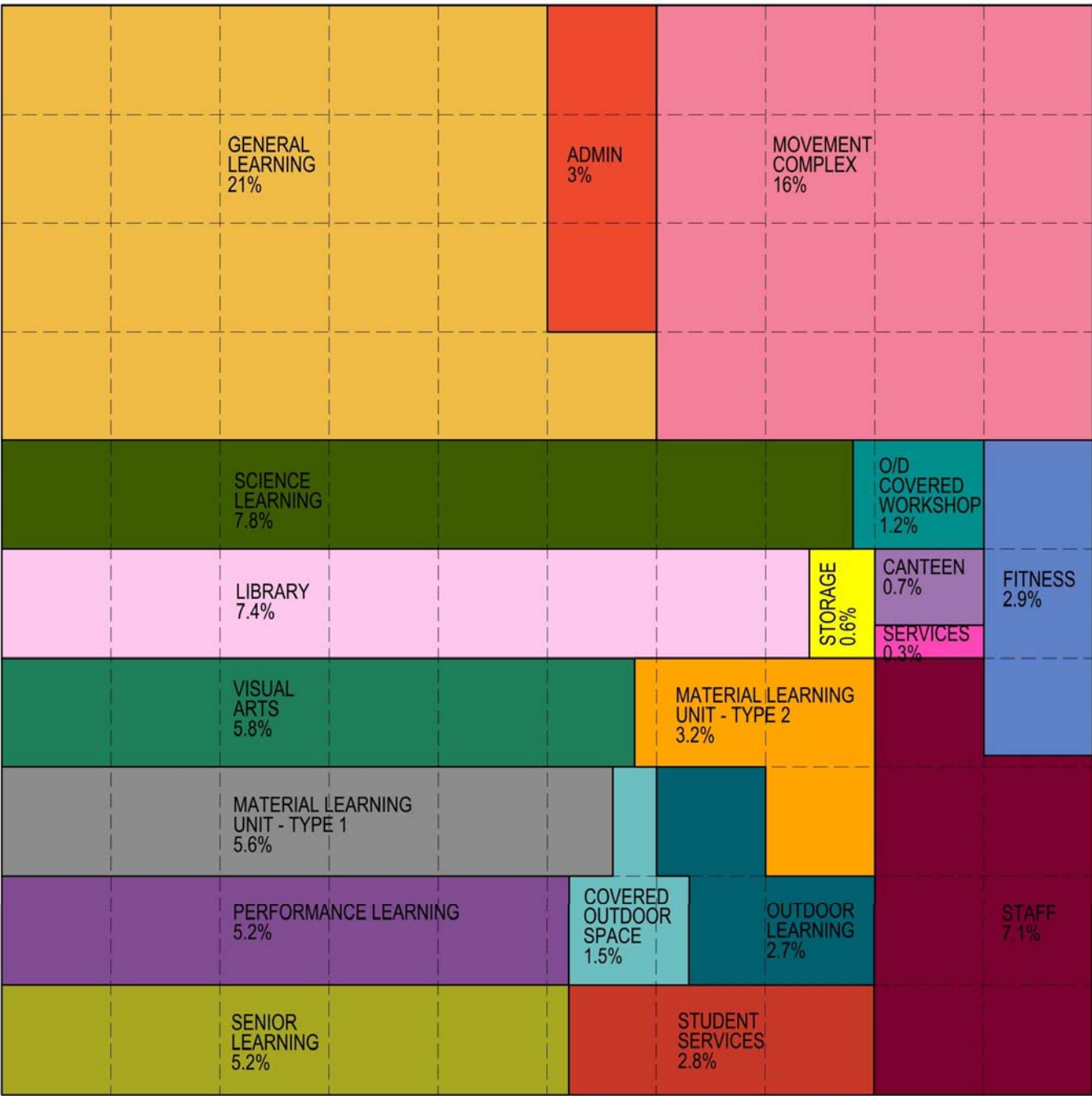
The Accommodation Schedule was developed by the Department of Education, based on the current *Educational Facilities Standards Guidelines*

An additional gymnasium is included, acknowledging that the site area does not accommodate the range of active outdoor recreation spaces usually provided in a secondary school.

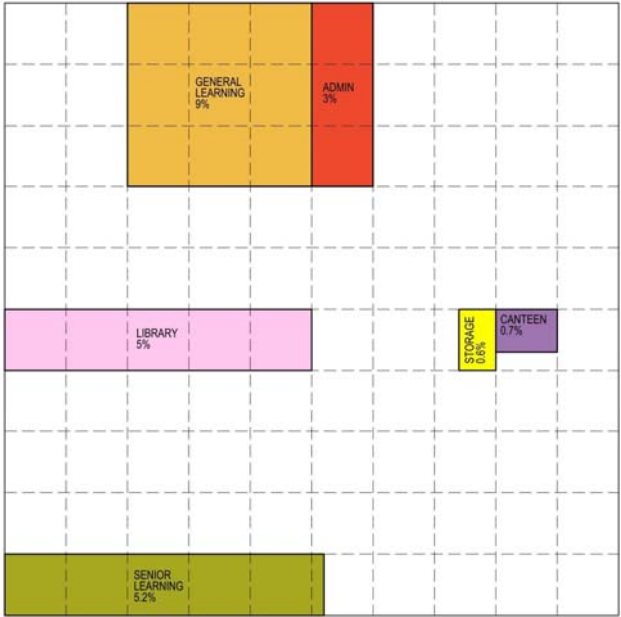
Inner City High School, Surry Hills

Project Brief

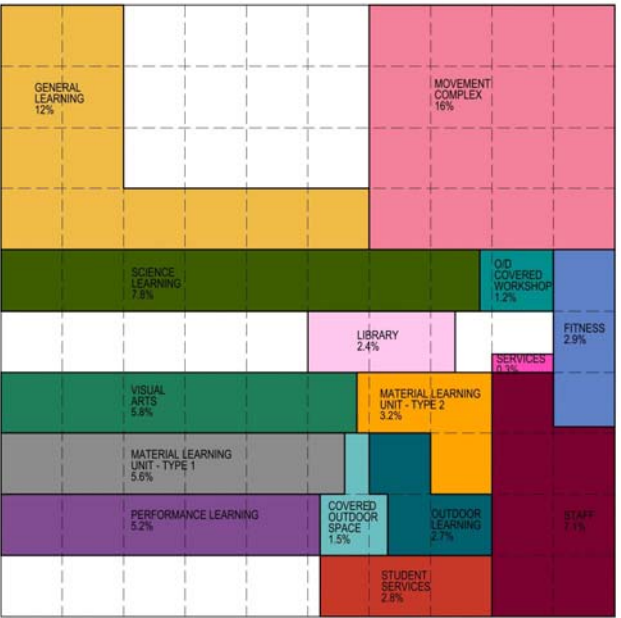
Accommodation Schedule Diagram, 1200 Students



Accommodation type as a proportion of the total UFA



Possible distribution in existing buildings



Possible distribution in new buildings

The PAG considered the optimal location for functional areas throughout the school.

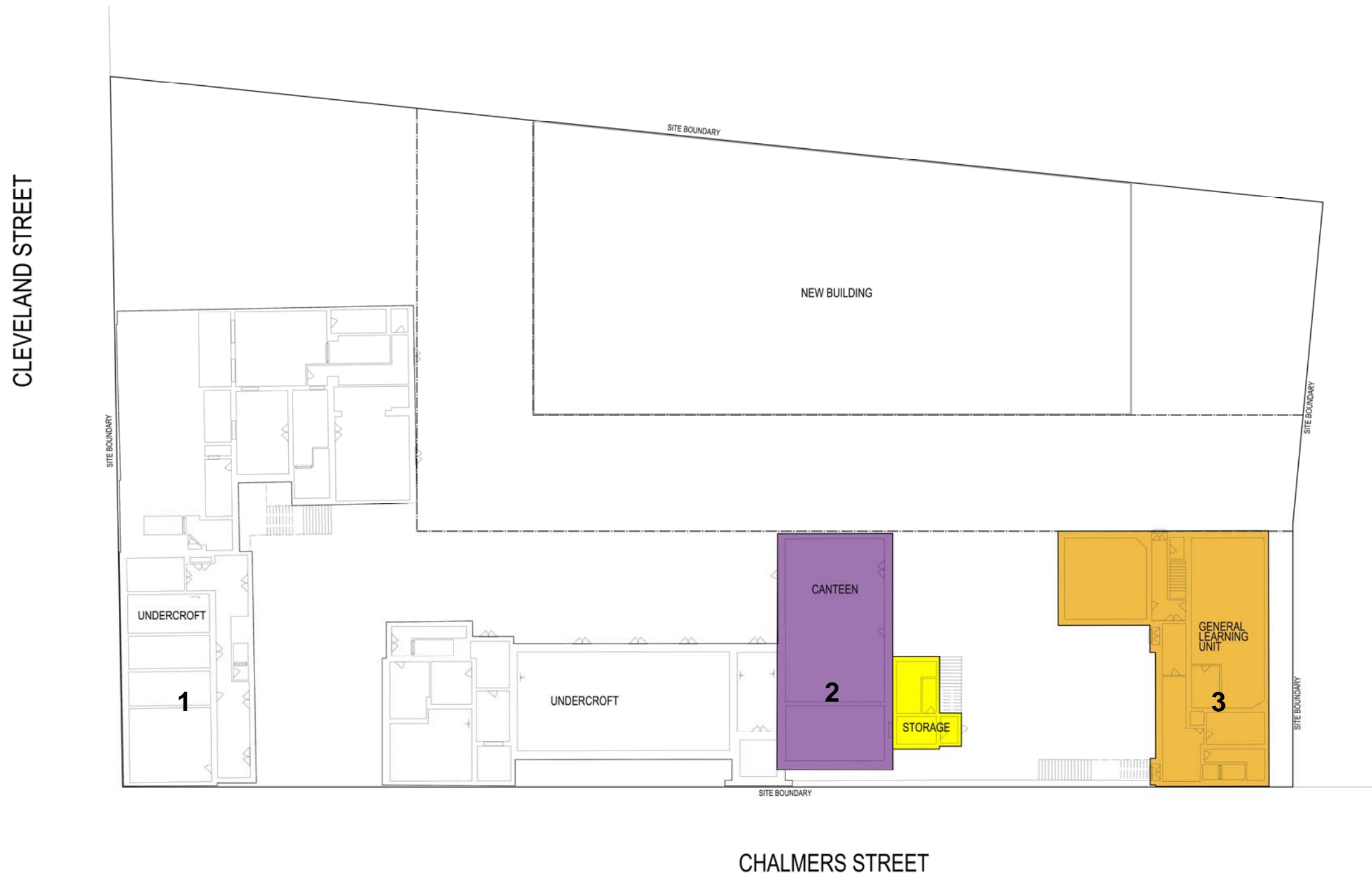
Key requirements include:

- Staff facilities are required to be centrally located within the overall school.
- Staff “hot desks” and Library “pockets” might be distributed through the new multi-storey building.
- Rooftop. Games courts and passive outdoor spaces may be located on the rooftop.

Inner City High School, Surry Hills

Concept

Existing Building – Utilisation – Park Level



Building 1 undercroft area is not suitable for use. This area does not meet contemporary accessibility requirements and has restricted ceiling height.

Building 2 undercroft has been used for informal recreation space throughout the school site history. Likewise the Canteen has been in this location for many years. It is proposed that these facilities remain in this central location, as there are opportunities for good connection with the outdoor passive recreation spaces.

Building 3 includes General Learning. Located at Ground Level, this may be used for community purposes after school hours.

Inner City High School, Surry Hills

Concept

Existing Building – Utilisation – Street Level



Building 1 “Street” level may be used for the Senior Learning Unit.

Building 2 may be used for Library facilities. The large space currently used as a “hall” may form the primary library space. There is potential for community access.

Building 3 includes General Learning and Administration. This would locate Administration in close proximity to the school entry point.

Inner City High School, Surry Hills

Concept

Existing Building – Utilisation – First Floor



Building 1 first floor level may be used for General Learning.

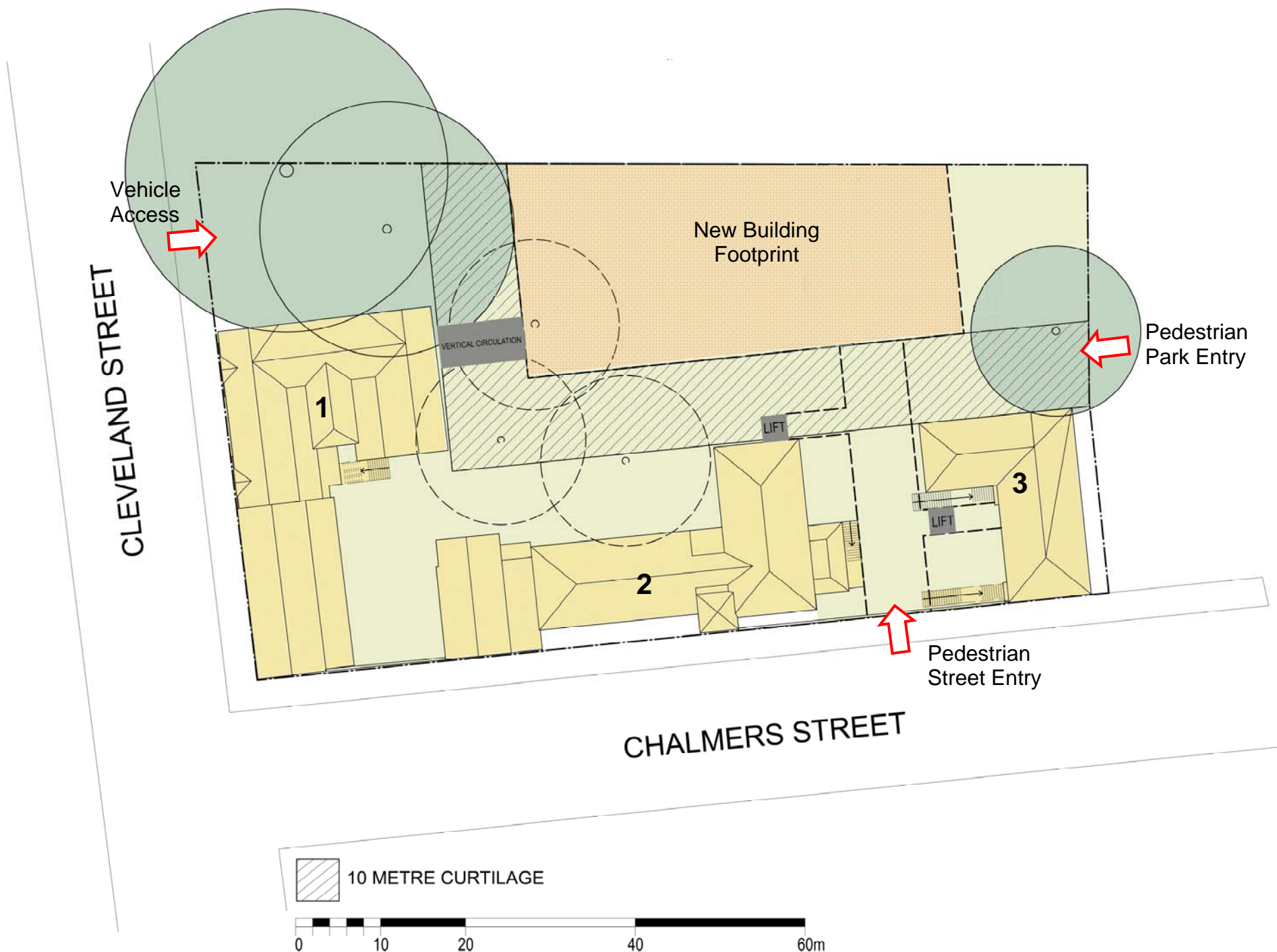
Building 2 may be used for Library facilities.

Building 3 includes Administration, in close proximity to the school entry point.

Inner City High School, Surry Hills

Concept

Site Plan



Site access

New accessible pedestrian entry points may be provided from both Chalmers Street and Prince Alfred Park levels.

The existing vehicle access point on Cleveland Street may be retained for service access.

Building access

The existing buildings do not comply with contemporary accessibility requirements.

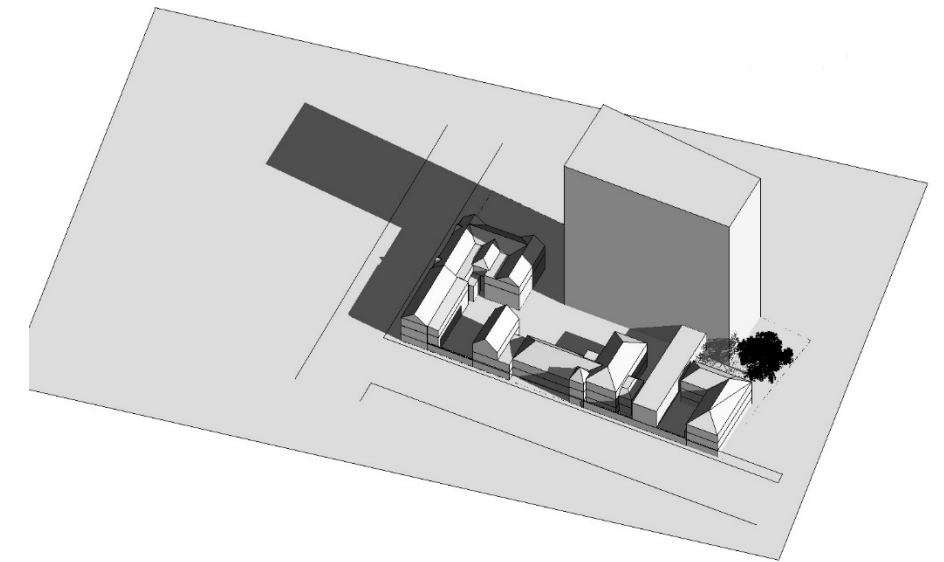
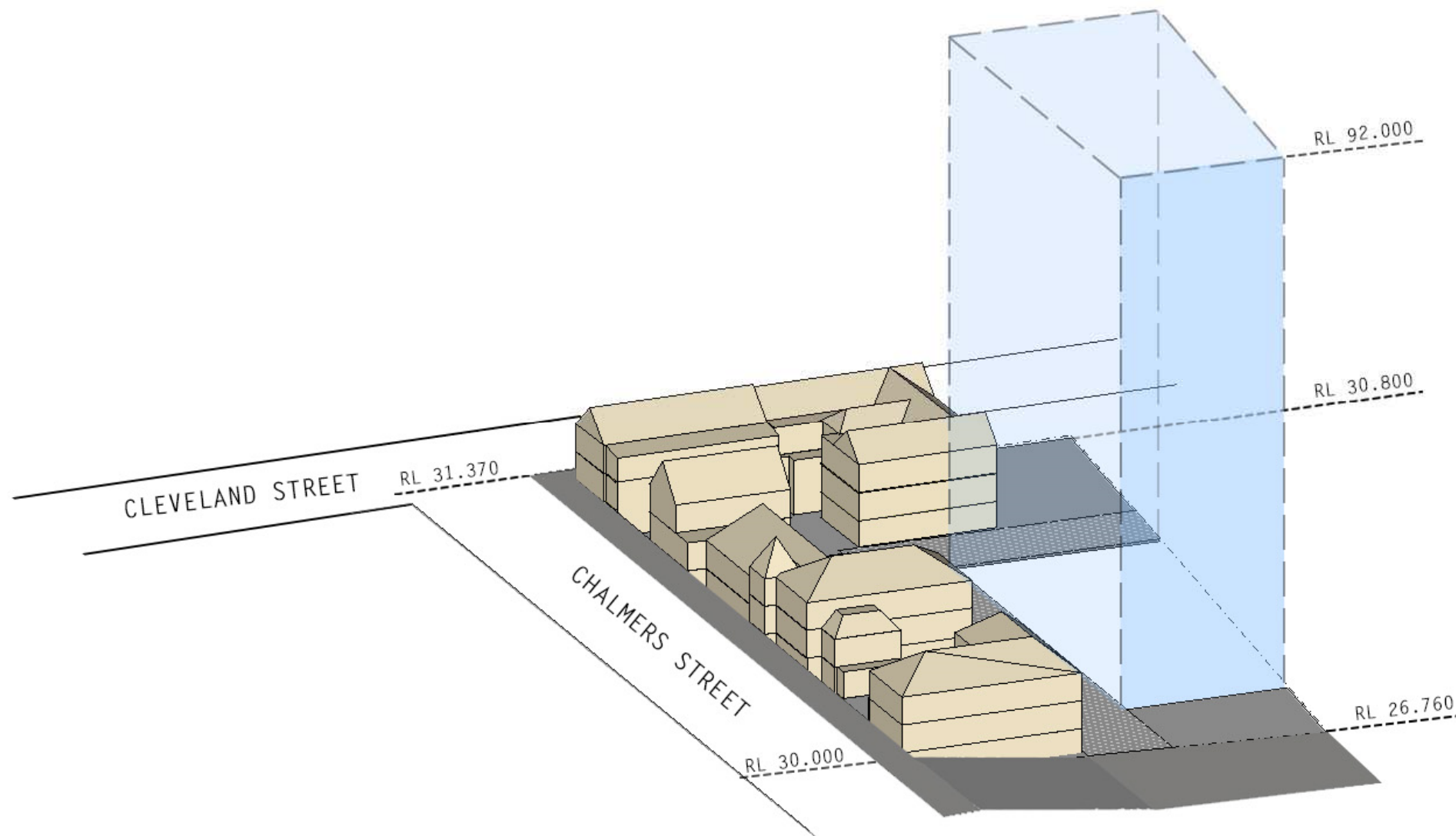
New lifts may be located adjacent Buildings 2 and 3, providing access to each level of these buildings.

A horizontal connection may be provided between Building 1 and the new multi-storey building.

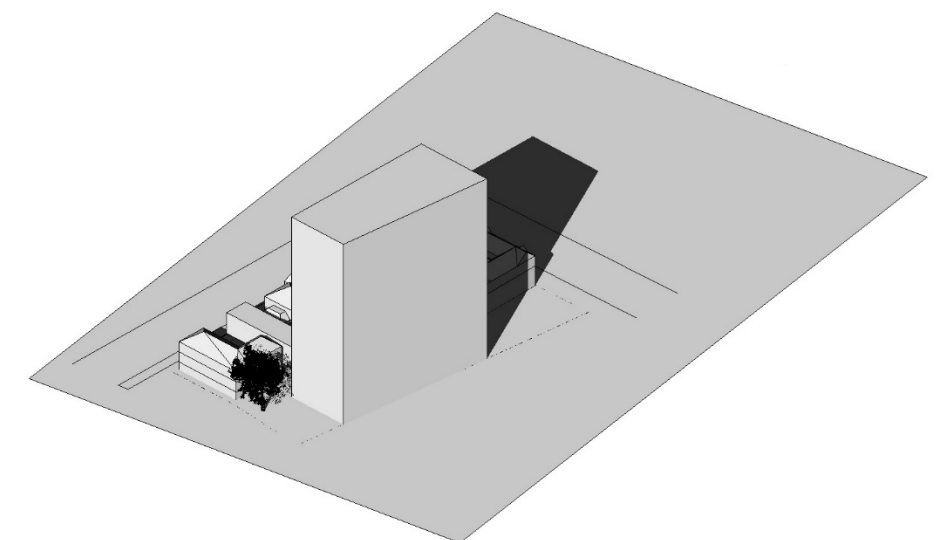
Inner City High School, Surry Hills

Concept

Indicative Envelope



Shadow Diagram: 21 June, 12pm



Shadow Diagram: 21 June, 2pm

Inner City High School, Surry Hills