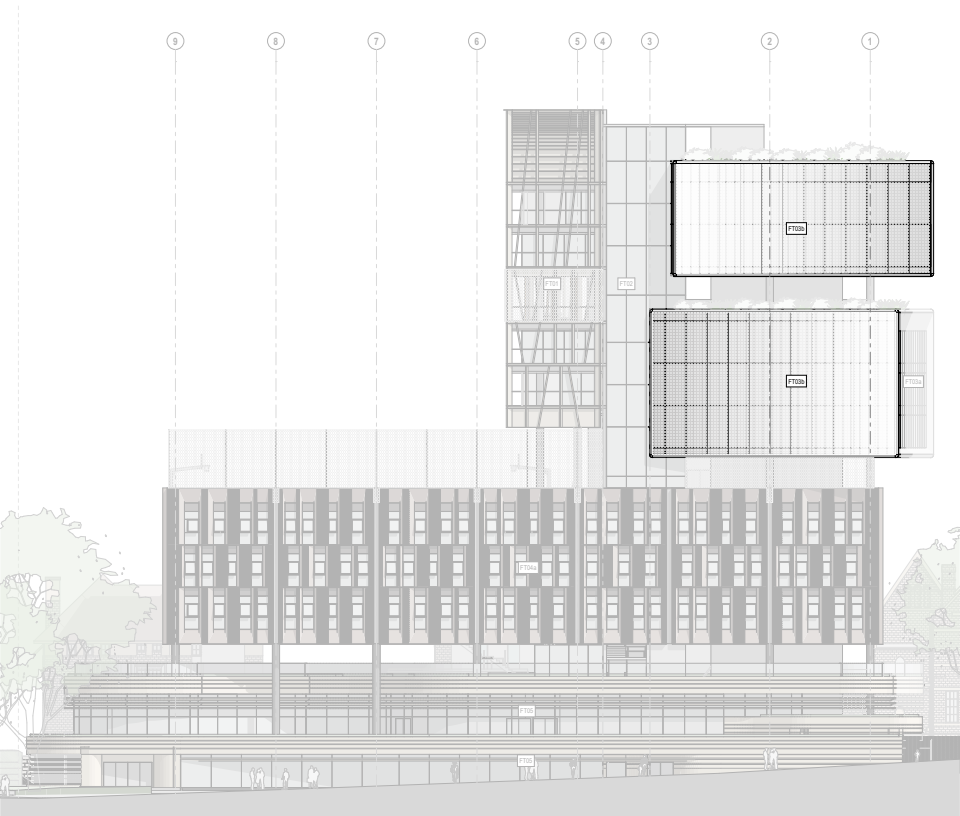


FT03b - Twisting Box Screened Facade

This system which is located to the east and west facades of the Learning Hubs. It is a double skin system with a perforated aluminium shading screen incorporating a 600mm wide steel frames maintenance access gangway. This gangway enables openable windows to be included into the facade.

The second skin is an aluminium framed window wall system with an internal glazed sliding system (only on East facade) including integrated toe panel slab edge cover and skirting. A nominal module is 1.8m wide with provision of an aluminium linear ventilation grille to ceiling void to provide the required mechanical ventilation.



West Elevation



East Elevation

