



Inner Sydney High School

Landscape Schematic Design Report

NSW Department of Education



fjmt studio architecture interiors urban landscape community
 09/06/17 – Landscape Schematic Design Report – Rev B

Project Name		Inner Sydney High School	
Project Code		ISHS	
Document Name		Landscape Design Statement FJMT	
Document ID			
Revision	Date	Comment	Approved
A	03.05.17	For SSD Assessment	PP
B	09.06.17	For SSD Assessment	PP

sydney Level 5, 70 King Street, Sydney NSW 2000 Australia **t** +61 2 9251 7077
melbourne Level 2, 56 Hardware Lane, Melbourne VIC 3000 Australia **t** +61 3 9604 2500
oxford Belsyre Court, 57 Woodstock Road, Oxford OX2 6HJ United Kingdom **t** +44 1865 29 2042
london 42–43 Upper Berkeley Street, London W1H 5PW United Kingdom **t** +44 2037 52 6762

w fjmtstudio.com

Francis-Jones Morehen Thorp Pty Ltd ABN 28 101 197 219
Nominated architect Richard Francis-Jones ARBNSW 5301
Registered architect Richard Francis-Jones
Francis-Jones Morehen Thorp Ltd Company no 7384142 ARB 078103G

1.0 Concept

Site, Place and Landscape • The Village Campus

The site sits on the edge of the park, a vital breathing space for the density of the surrounding urban fabric. The topography of the park weaves through the new campus , integrating new with old and grounding the campus to the memory of the land - the marshlands of Blackwattle Creek, the campsites of the Gadigal people. A strong sense of place gives meaning and connection for the community. The inner city kids are proud of their roots.

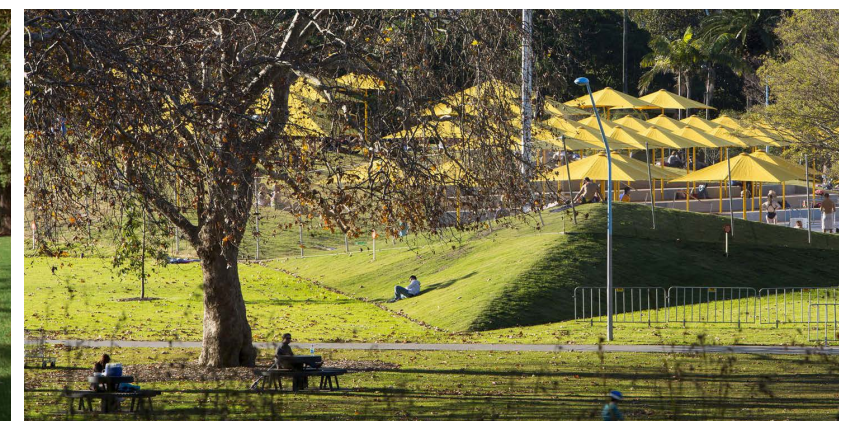
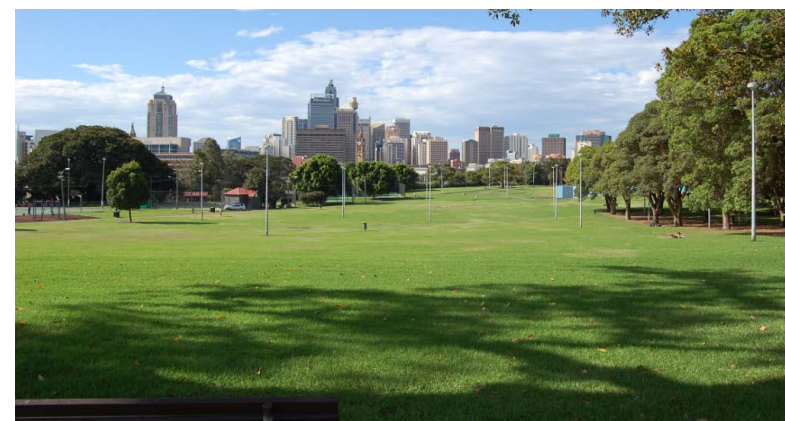
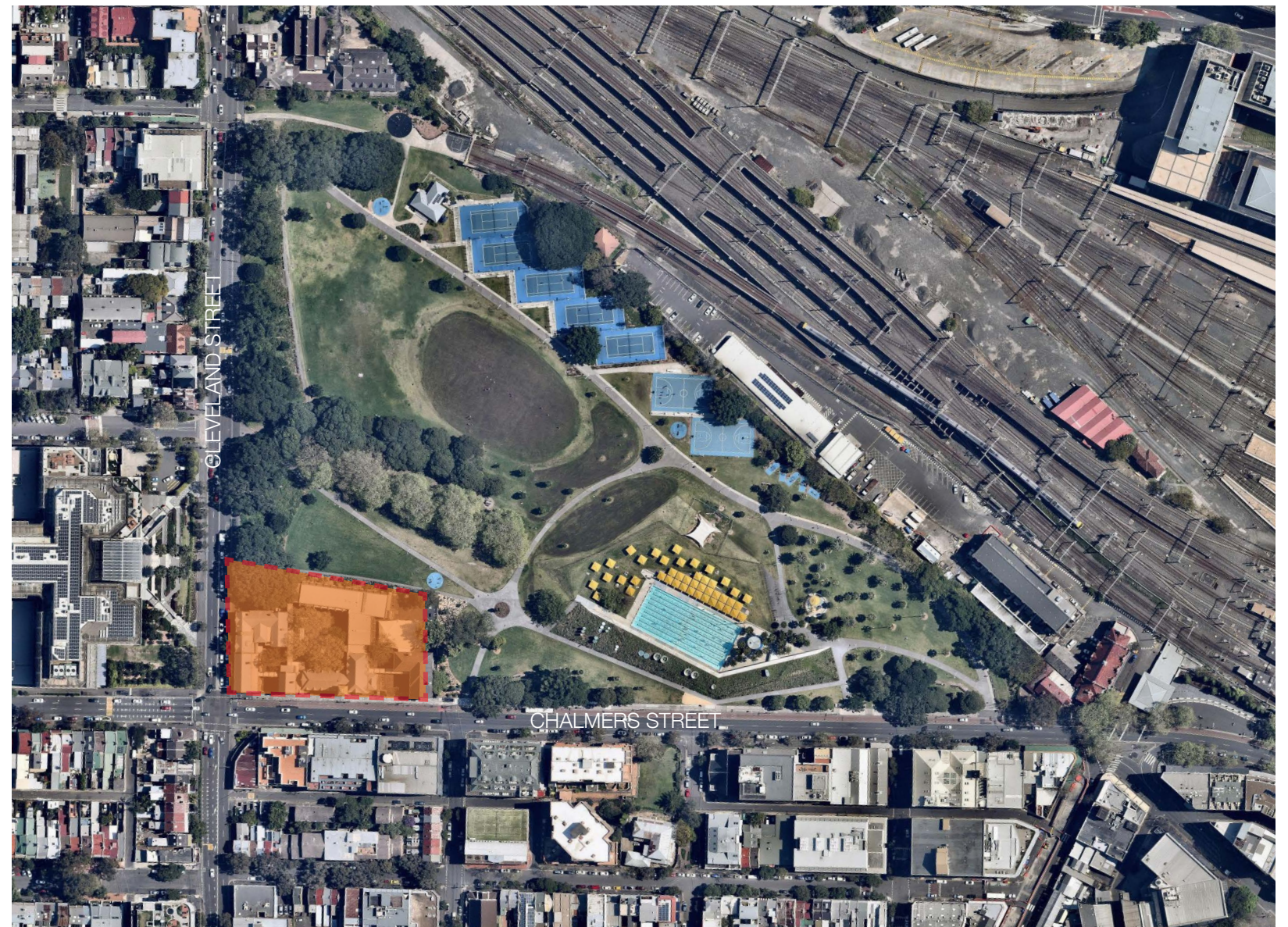
The Architectural massing of the new building minimises the impact on the park.

Podium planting of native grasses and mixed parkland species located on multiple building levels; the creation of landscape platforms with strong visual connections to the park; and the considered interface between building and parkland, combine to create the basis for a strong building/landscape connection, and the anchoring of the sense of belonging to site .

The landscape establishes connections and integration of the existing heritage language with the new architectural forms, through a blending of materials and complementary reference to character..

Recreational and outdoor educational opportunities are maximised throughout the site, and landscape interventions facilitating multiple use options are introduced on many levels of the building.

More intimate, formal courtyards, with deciduous tree planting, form multipurpose spaces with opportunities for passive recreation to the edges and possibilities for interactive activities to the main areas.



2.0 Project Brief

The following table outlines key design objectives / educational principles of the project brief and how they have been incorporated into the landscape design

Project Brief - key landscape principles / design objectives	Landscape Design Elements
Provide a mix of passive and active spaces Create flexible spaces Explore opportunities to maximise the diversity of indoor and outdoor space Support physical and emotional health	<ul style="list-style-type: none">▪ Within the site a number of outdoor spaces are proposed and designed to promote flexible/ multipurpose use of the space - the internal landscape includes areas for outdoor games and amphitheatre seating for outdoor events.▪ Maximising diversity, potential community sharing - opportunities to use the internal courtyard for community events such as markets/concerts could be explored.▪ Connections to the outdoor environments encourages active and passive play and sports health and wellbeing.
Facilitate access to and use of Prince Alfred Park Enhance connections to nature Provide pedestrian access on the northern side (Masterplan)	<ul style="list-style-type: none">▪ The architectural form and the landscape design work together to create a welcoming address to Prince Alfred Park - the open glazed western frontage embraces the park and promotes connections both from within the building to nature and from the community connecting back to the school.▪ The western edge is activated and illuminated, increasing visual and pedestrian permeability and creating a relationship between the school and the park..▪ The landscape design also includes a northern pedestrian connection to the park.
Explore options to provide open space at ground level and within the building Enable buildings and outdoor spaces to be learning tools in themselves	<ul style="list-style-type: none">▪ The building form has been designed to maximises external spaces and connection with the outdoors - podiums and undercroft landscaped spaces within and on top of the building have incorporated vertically through the high school.▪ Learning opportunities are present in the design of external spaces including gardens for permaculture / food technology and outdoor spaces for climatology. Numerous opportunities to expand on educational themes are also present in these environments - eg. science, art, mathematics, history.
Provide / maintain vehicular entry and parking on the southwest corner of the site (Masterplan)	<ul style="list-style-type: none">▪ The existing carpark and entry / exit to Cleveland Street is maintained in the design - the project team is working with the project engineer and the arborist to refine construction techniques to protect the existing trees and provide adequate drainage.

