



View of Level 9 Terrace

8.1 Organisational Strategies Outdoor Functional Uses

**Learning Community Hub
General STE(a)M**

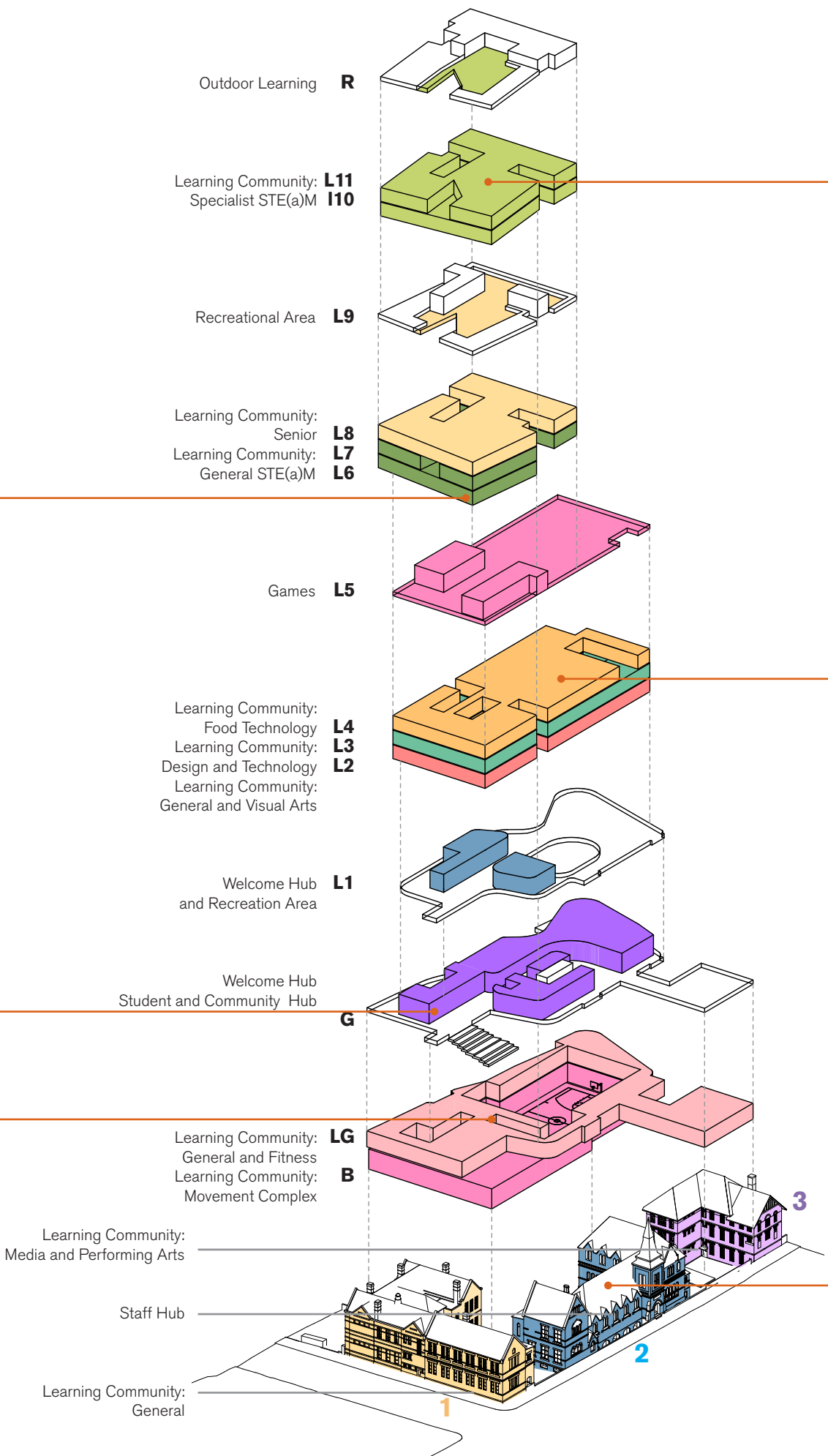
Elevated and slightly orientated towards the south west, the lower Learning Community Hub provides five (5) levels of flexible accommodation. These levels will be predominately used by the middle years.

**The Welcome Hub
The Student Community Hub**

Over two connected levels, this is the heart of the campus, with views out to the park and across to a new Amphitheater which is formed by a new relationship created between the existing heritage fabric and the “*Landscaped Terraces*”. This is the “one stop shop” for the students, staff and parents - a vibrant, active, visible and inclusive space with stair connections to the Movement and Fitness Learning Communities and the Warehouse above. The Administration Hub can be directly accessed via a bridge from this level.

**Learning Communities -
Movement Complex and Fitness**

Located within a new basement and lower ground level, the Movement Complex has a close relationship with the Fitness Learning Community. The new campus has a single large Gymnasium which can accommodate a full netball court. Additional games areas are located on the upper undercroft terraces. The size of this gymnasium has been increased to provide additional run off and bleacher seating so that the area is appropriate for large assemblies and also community hire. The Movement Complex can be accessed either from the Student and Community Hub or directly from Prince Alfred Park. There is visual connectivity to both the park and the main entrance.



**Learning Community Hub
Senior and Specialist STEM**

Elevated and slightly orientated towards the south east, these levels will be predominantly used by the senior years. All three (3) levels can be connected or Level 11 can operate as a discrete unit.

The Village Campus - The Studio

A large flexible teaching and learning volume with an interconnecting stair and associated voids. A covered outdoor learning area is located to the north of the Studio with views across Prince Alfred Park to the city. The Studio is connected to the lower levels via a linear stair commencing at the Welcome Hub level. This stair also provides direct access to the Games Deck. The Studio has a generous structural grid providing a flexible structural solution.

The Village Campus - Heritage Areas

Each of the heritage buildings have been integrated into the Village Campus. Large glazed openings to the north of Building 1 and the west of Building 2 and Building 3 provide clear access to the horizontal link which connects the north/south axis.

The Energy Centre

Location of proposed photo voltaic array

The City Deck

An upper level protected recreational area accessed from both Tower Learning Hubs. This area is used for Outdoor Recreation and Outdoor Learning.



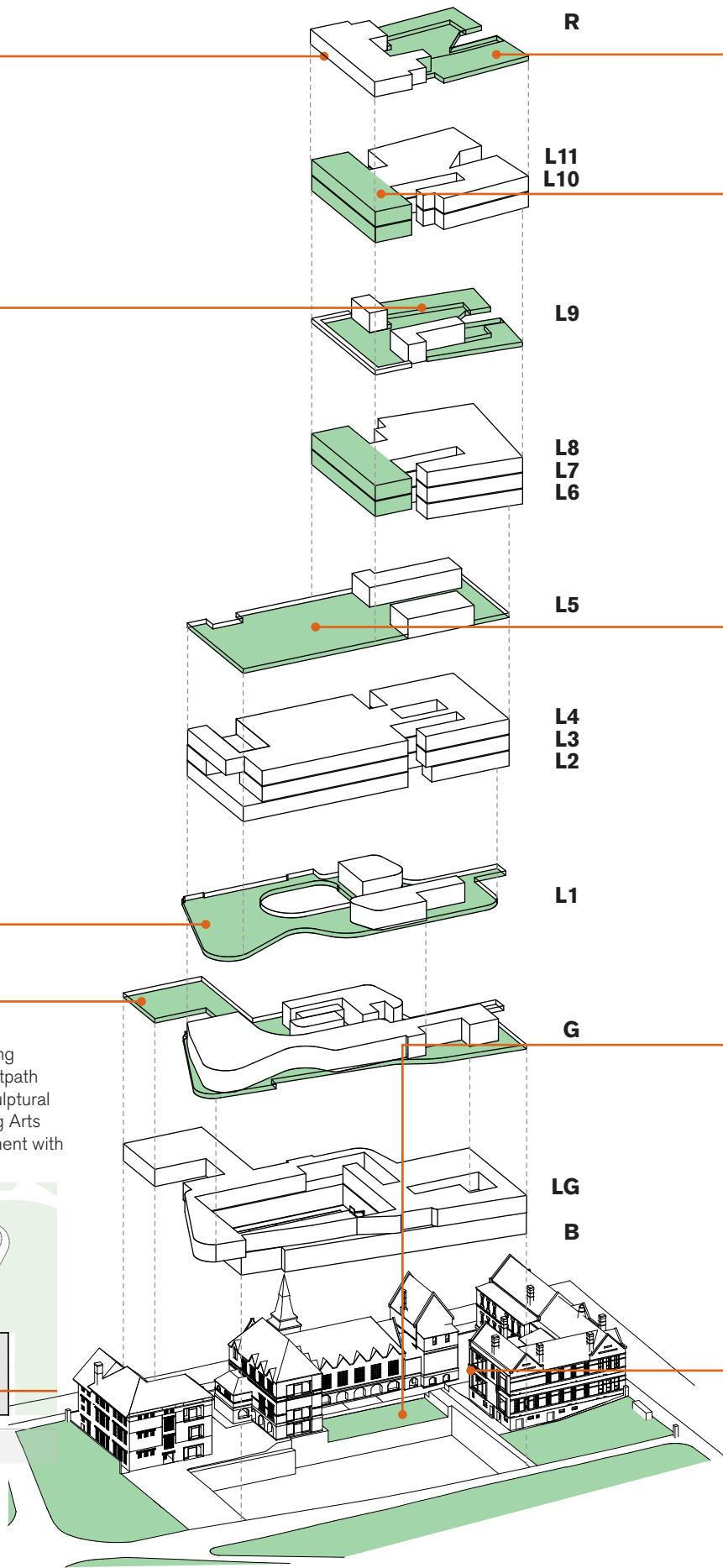
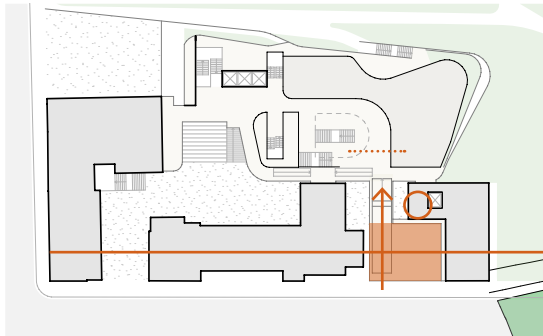
The Student Community Hub

Over two connected levels, this is the heart of the campus, with views out to the park and across to the Amphitheater. This is the “one stop shop” for the students, staff and parents - a vibrant, active, visible, informal and inclusive space.



The Entrance Forecourt

A landscaped entrance forecourt provides a breathing space for the school entrance along the narrow footpath of Chalmers Street. There is an opportunity for a sculptural skylight to provide daylight down into the Performing Arts Learning Community below and to provide engagement with the street.



The Elevated Paddock

Outdoor farm



The Verandah

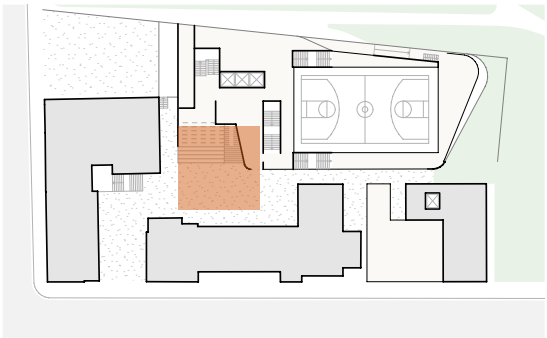
Flexible opportunities for Outdoor learning are located on the Verandah. Practical or Specialist Learning or Open Learning can be opened up to this area using large glazed sliding doors. Reference image: NLE

The Games Deck

Full sized netball/basketball court with adjacent active play to undercroft area (under tower). Courts are accessed via lifts and stairs from Level 4 and Level 6.

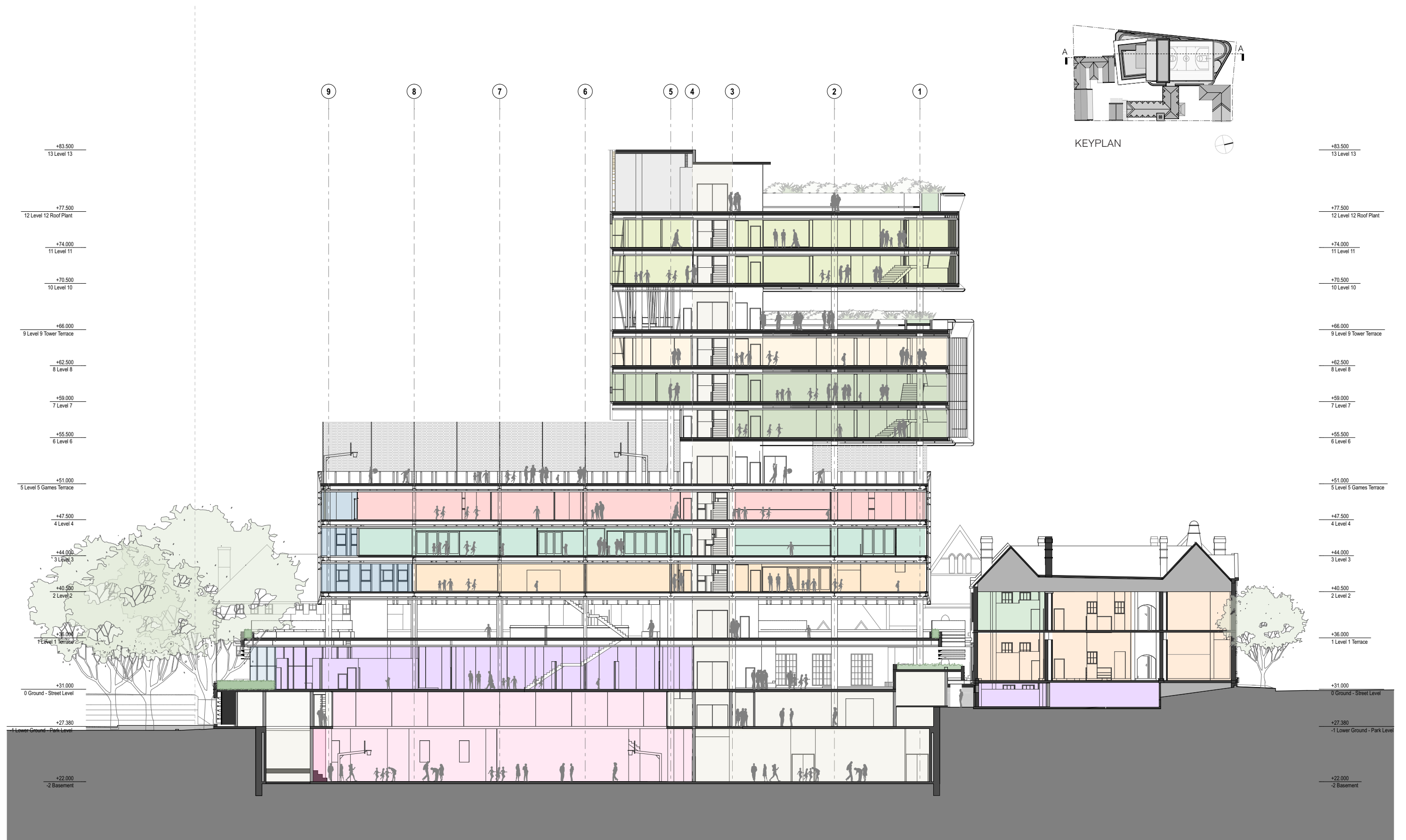
The Amphitheatre

A special gathering space at the heart of the school directly connected to the Student and Community Hub. The Quadrangle can be used for performances, presentations or recreation.



The Hollow

A quieter recreational space sunken in between the heritage buildings. Deciduous screening landscaping will provide privacy from Chalmers Street whilst allow sun access into the court. The edges will be used for quieter more contemplative spaces with opportunities for activities such as table tennis in the open areas.



Section looking East

