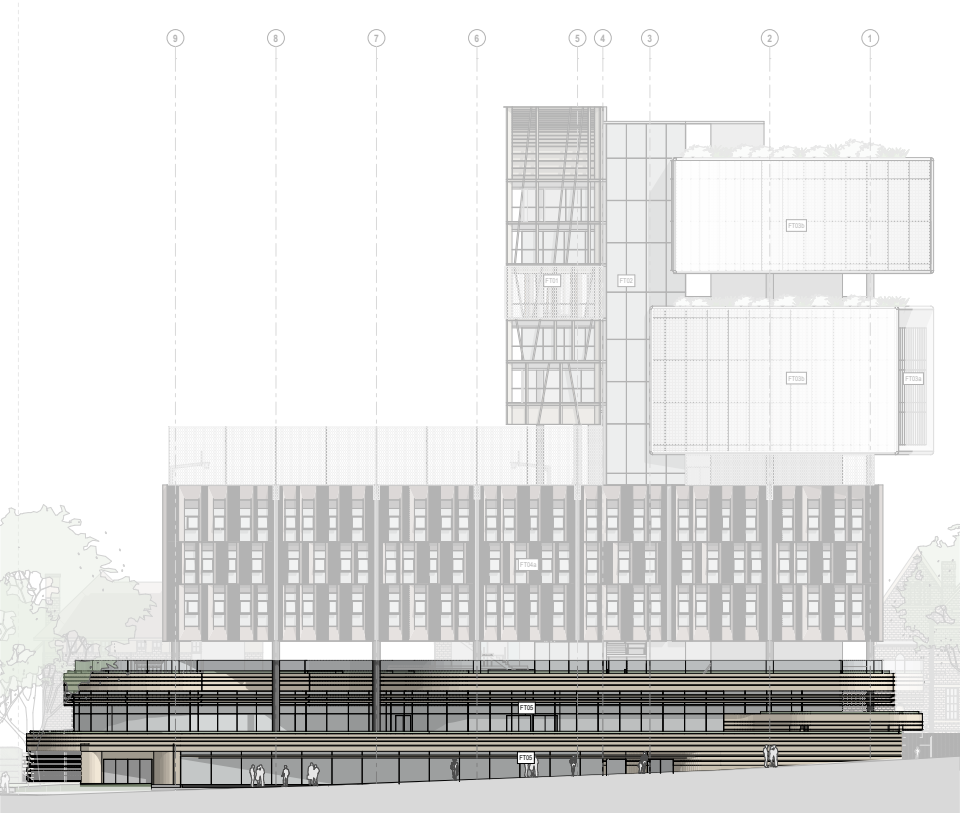


**FT05 - Landscaped Terrace Facade**

This facade which weaves around the Landscaped Terraces consists of a glazed façade comprising vision and spandrel strips with external battens. The facade incorporates sections of cast in-situ concrete with aluminium louvers.

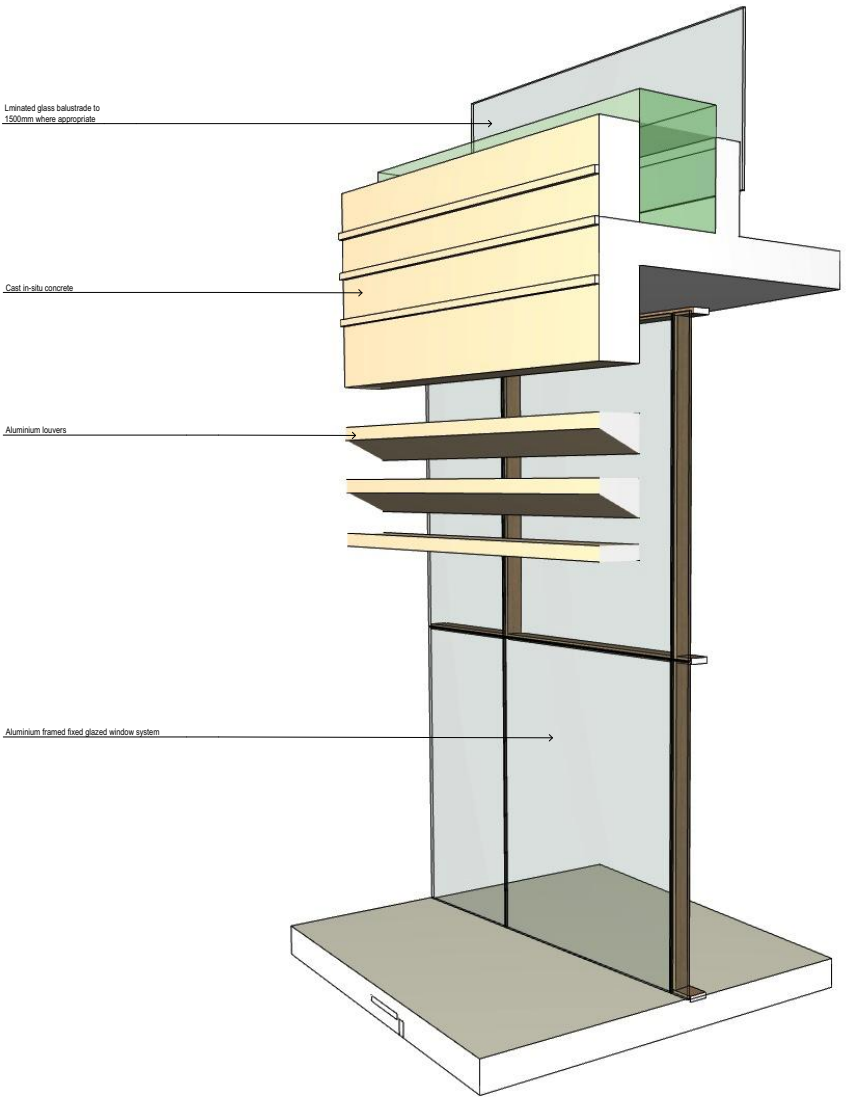
The facade incorporates a laminated glass balustrade to 1500mm where appropriate and is of variable width and radii modules.



**West Elevation**



**North Elevation**



FT04 - A response to scale and proportions



East Elevation

The articulation of the “Studio” relates to the proportions of the gothic gable ends of the heritage buildings.



East Elevation

The fenestration of the “Studio” relates to the proportions of the fenestration of the heritage buildings with a contemporary response.





North Elevation  
1:200

#### FACADE TYPES LEGEND

- FT01** Full Height Tensile Webnet facade with angled external steel framed feature aluminium structure.
- FT02** All glass facade.
- FT03a** Aluminium framed floor-by-floor system with internal glazed sliding system.
- FT03b** Perforated aluminium shading screen in front of aluminium framed system with internal glazed sliding system. Incorporates 600mm wide maintenance access gangway.
- FT04a** Face bricks on stainless steel shelf angles with inset aluminium framed windows and aluminium sheet trim to reveals
- FT04b** Face bricks on stainless steel shelf angles and horizontal aluminium blades.
- FT05** Glass facade comprising vision and spandrel strips with external battens. Incorporates sections of solid wall and laminated glass balustrade to 1500mm where appropriate.