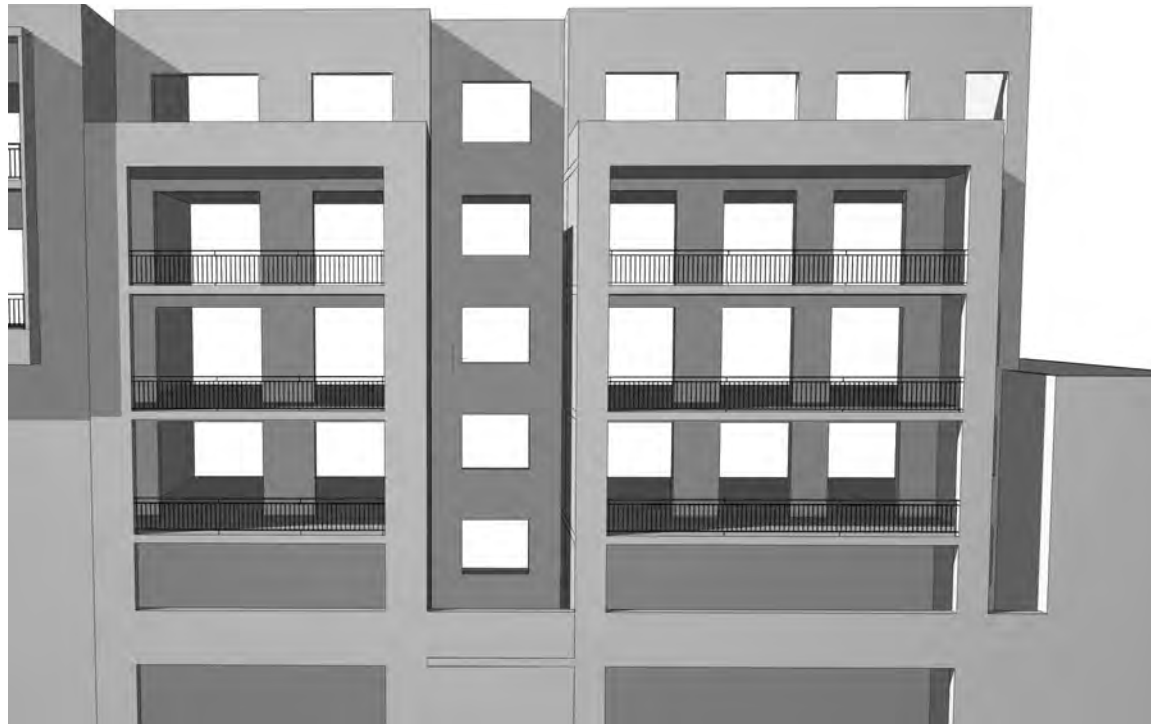
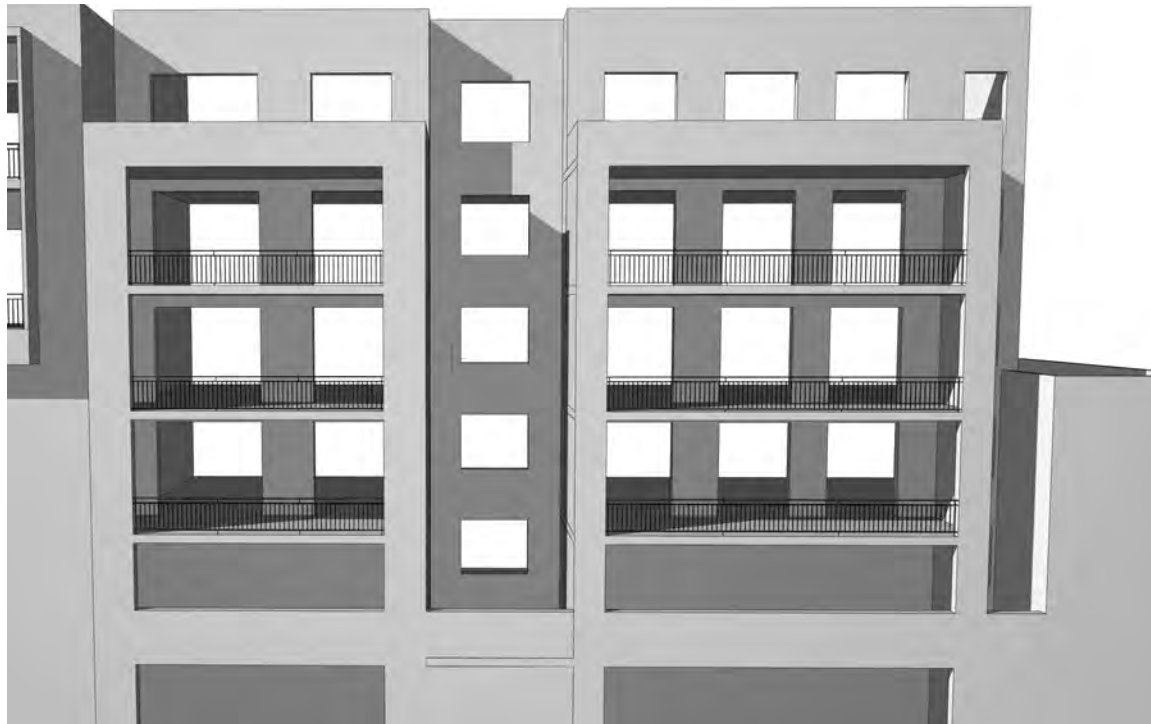


204-214 CHALMERS ST

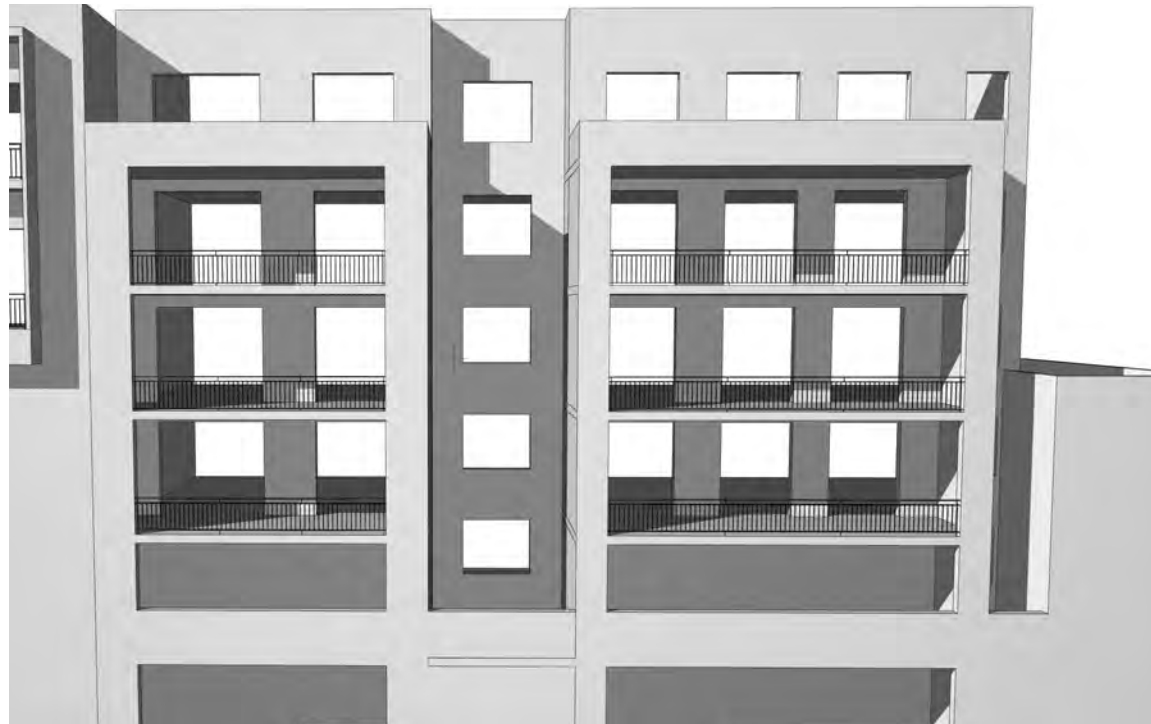
EXISTING



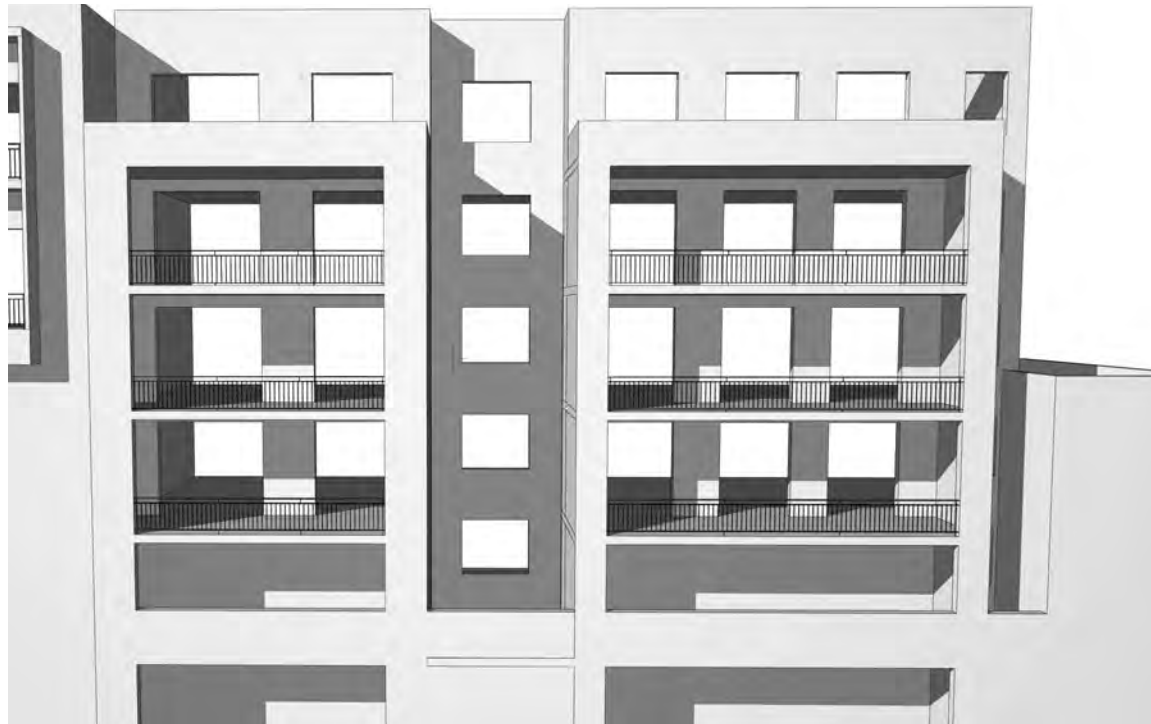
12pm



12:30pm

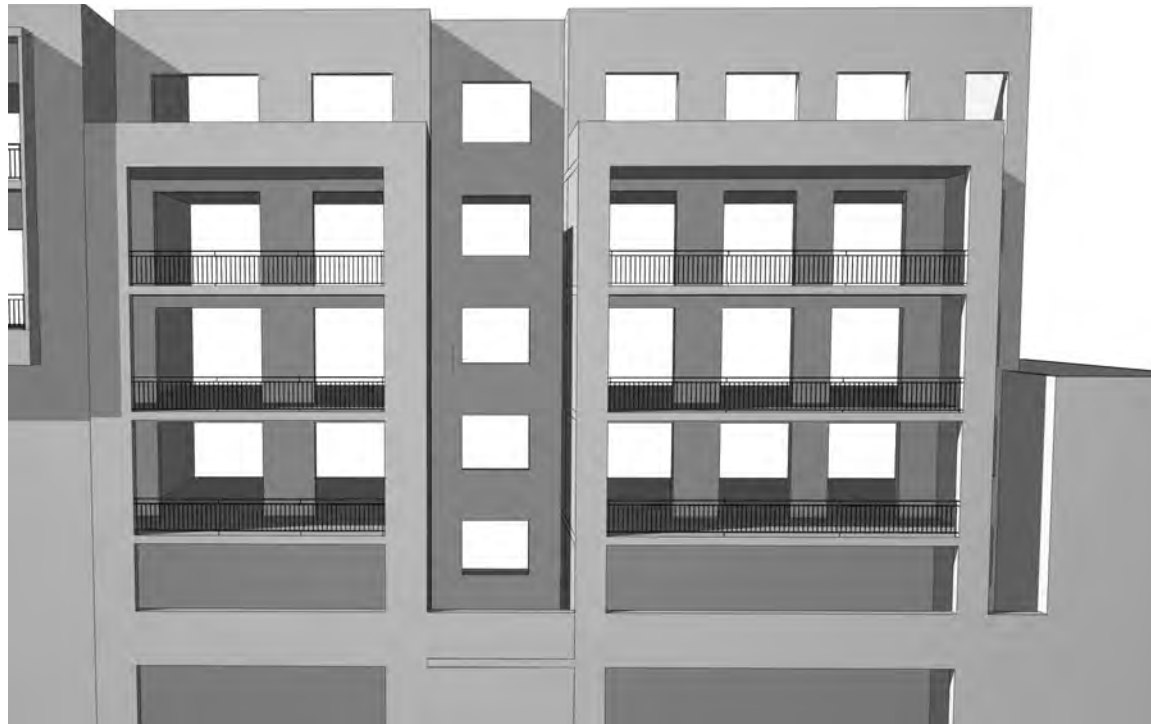


1pm

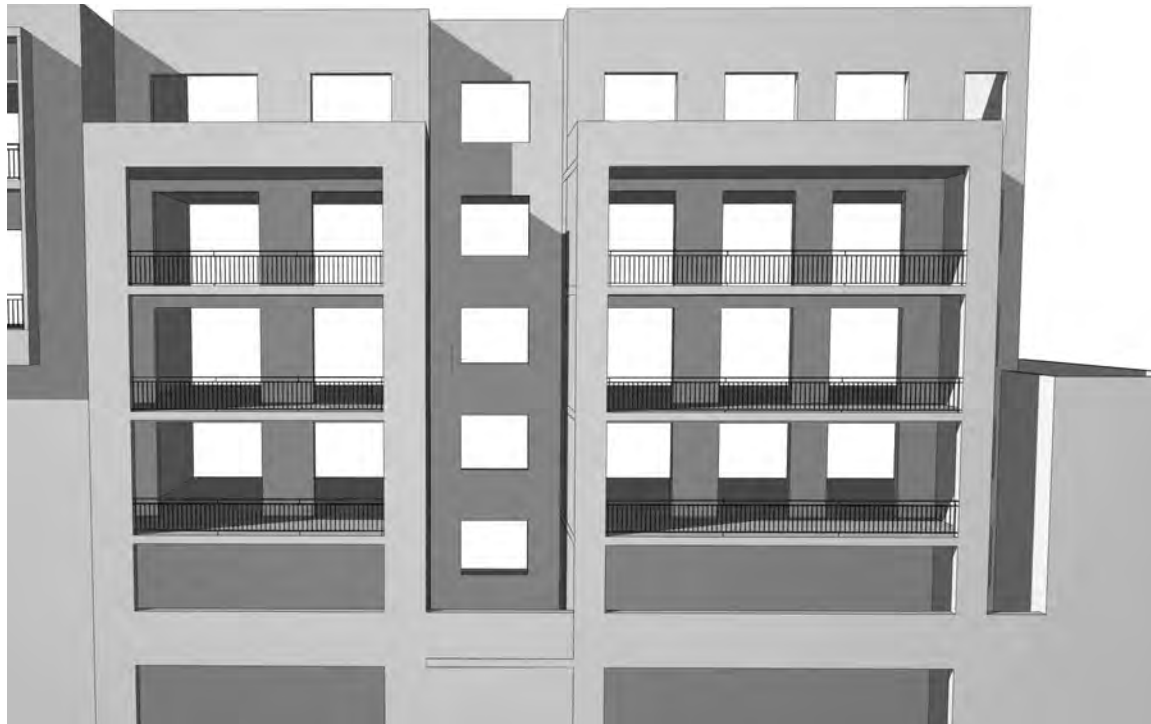


1:30pm

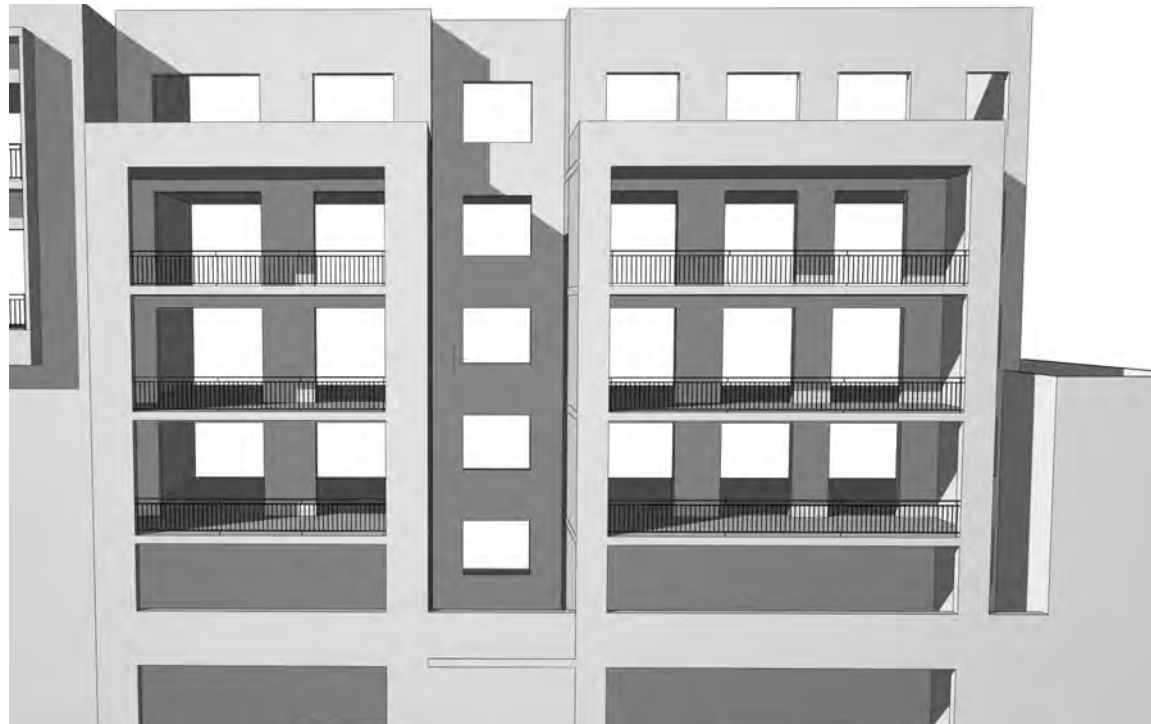
PROPOSED



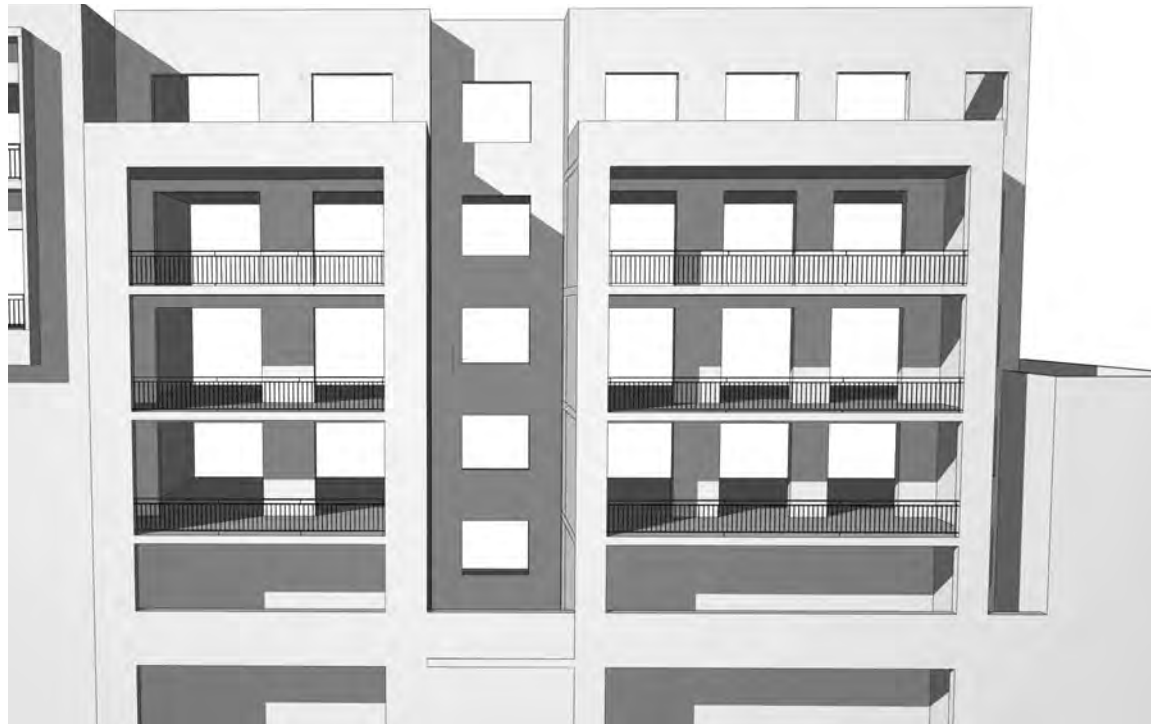
12pm



12:30pm



1pm



1:30pm

GENERAL NOTES

- ALL DIMENSIONS AND EXISTING CONDITIONS SHALL BE CHECKED AND VERIFIED BY THE CONTRACTOR BEFORE PROCEEDING WITH THE WORK
- ALL LEVELS RELATIVE TO 'AUSTRALIAN HEIGHT DATUM'
- DO NOT SCALE DRAWINGS
- USE FIGURED DIMENSIONS ONLY

legend

EXISTING



2pm



2:30pm



3pm

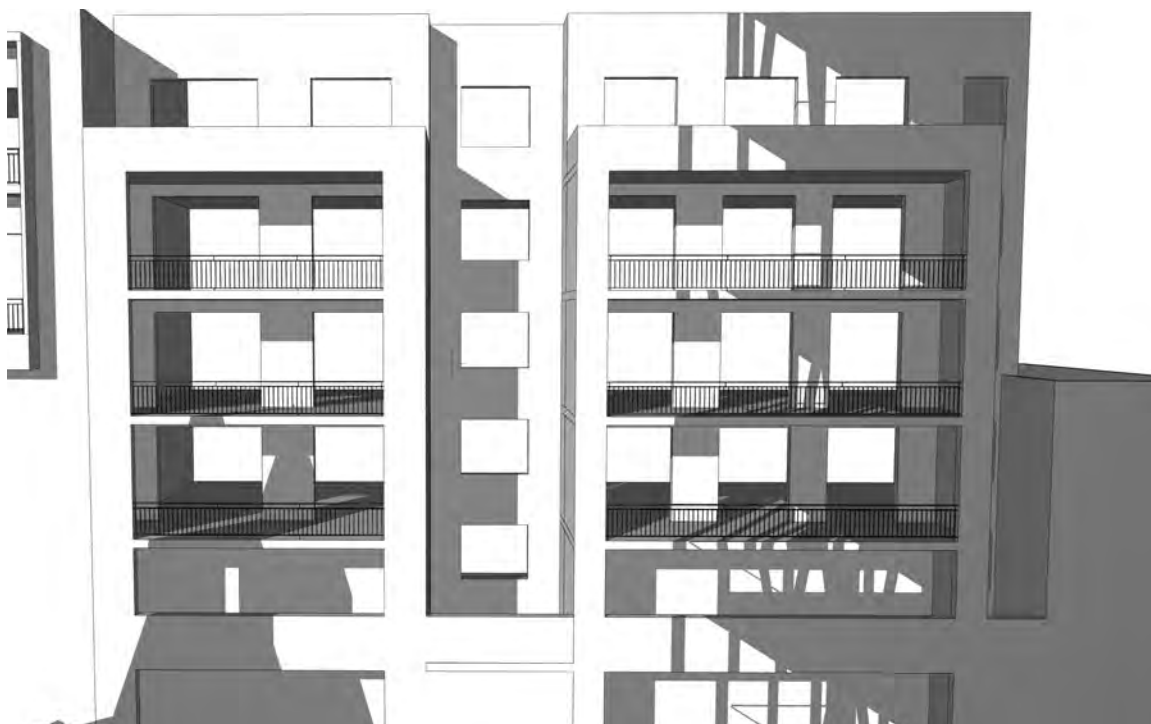


4pm

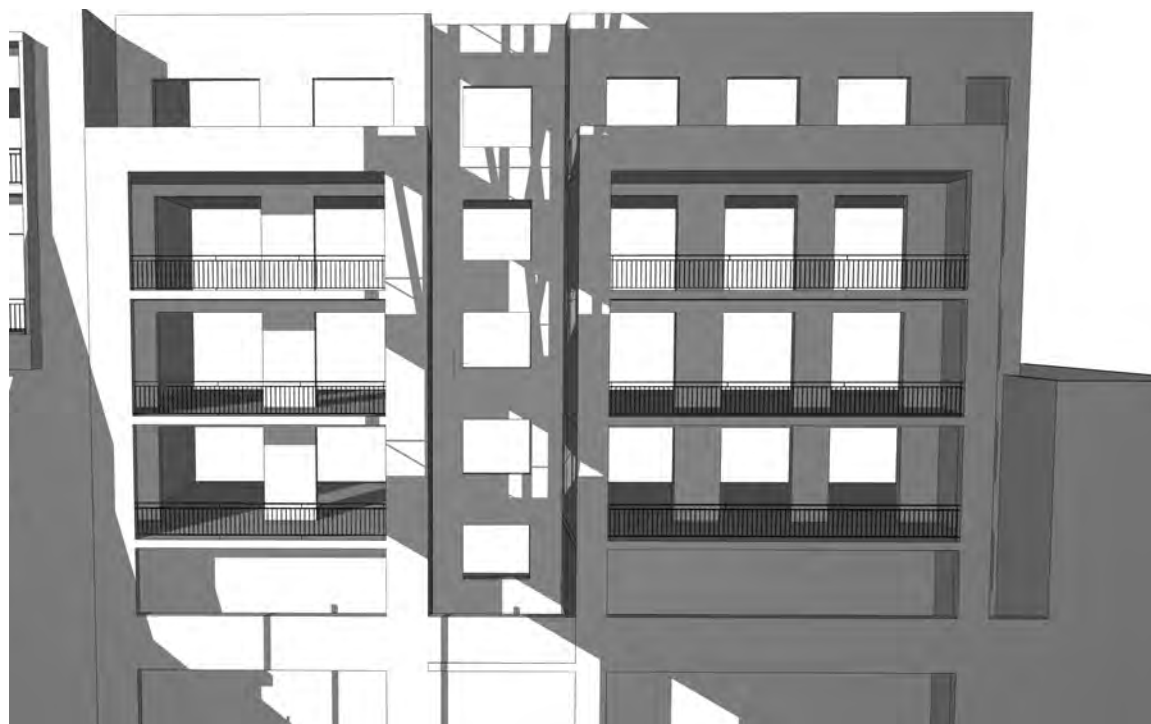
PROPOSED



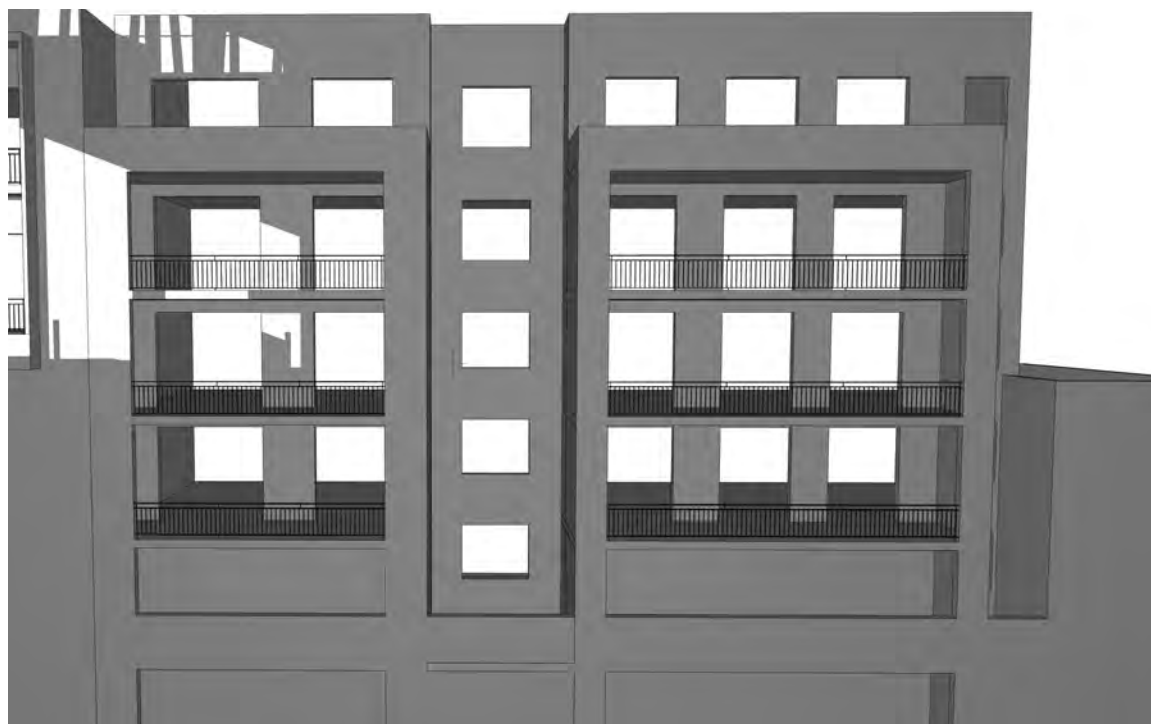
2pm



2:30pm



3pm



4pm

B	05/11/17	RTS 2	KT
A	26/09/17	RTS	AWY
rev	date	name	by
			chk

fjmt studio architecture interiors landscape urban community
sydney melbourne uk
Level 5, 70 King Street E +61 2 9251 7077 [www.fjmtstudio.com](#)



project
Inner Sydney High School
244 Cleveland Street
Surry Hills, Sydney NSW 2010

title
Sun Studies
June 21st - 204-214 Chalmers St Facade

scale	first issued	28/03/2017
project code	sheet no.	revision
ISHS	6005	B