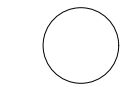


Inner Sydney High School

200 Chalmers St, Sydney NSW 2010

Drawing List

Drawing Number	Drawing	Revision ID
1000	Cover Page	D
1200	Site	D
1201	Site	D
2001	General Arrangement Plans	D
2002	General Arrangement Plans	D
2003	General Arrangement Plans	D
2004	General Arrangement Plans	D
2005	General Arrangement Plans	D
2006	General Arrangement Plans	D
2007	General Arrangement Plans	D
2008	General Arrangement Plans	D
2009	General Arrangement Plans	D
2010	General Arrangement Plans	D
2101	SSD Demolition Plans	D
2102	SSD Demolition Plans	D
2103	SSD Demolition Plans	D
2201	SSD Demolition Elevations	C
2202	SSD Demolition Elevations	C
2203	SSD Demolition Elevations	C
2801	GFA Plans	C
2802	GFA Plans	C
2803	GFA Plans	C
3001	Elevations	D
3002	Elevations	D
3003	Elevations	D
3004	Elevations	D
3201	Elevations	C
3202	Elevations	C
3203	Elevations	C
4001	Sections	D
4002	Sections	D
4003	Sections	D
6001	Sun Studies	B
6002	Sun Studies	B
6003	Sun Studies	B
6004	Sun Studies	B



- GENERAL NOTES**
- ALL DIMENSIONS AND EXISTING CONDITIONS SHALL BE CHECKED AND VERIFIED BY THE CONTRACTOR BEFORE PROCEEDING WITH THE WORK
 - ALL LEVELS RELATIVE TO 'AUSTRALIAN HEIGHT DATUM'
 - DO NOT SCALE DRAWINGS
 - USE FIGURED DIMENSIONS ONLY

legend

D	9/10/17	RTS Submission	KT	EC
C	20/9/17	RTS Submission	KT	EC
B	11/9/17	SSD Application	KT	EC
A	9/8/17	SSD Application	KT	EC
rev	date	name	by	chk

fjmt studio architecture interiors landscape urban community
sydney melbourne uk
Level 5, 70 King Street t +61 2 9251 7077 w fjmtstudio.com

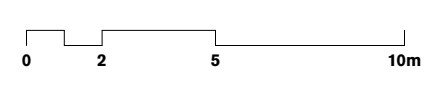
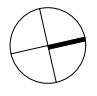


project
Inner Sydney High School
244 Cleveland Street
Surry Hills, Sydney NSW 2010

title
Cover Page
Cover Page

scale	first issued	9/8/2017
project code	sheet no.	revision
ISHS	1000	D





GENERAL NOTES

- ALL DIMENSIONS AND EXISTING CONDITIONS SHALL BE CHECKED AND VERIFIED BY THE CONTRACTOR BEFORE PROCEEDING WITH THE WORK
- ALL LEVELS RELATIVE TO 'AUSTRALIAN HEIGHT DATUM'
- DO NOT SCALE DRAWINGS
- USE FIGURED DIMENSIONS ONLY

Legend

 SITE BOUNDARY

D	9/10/17	RTS Submission	KT	EC
C	20/9/17	RTS Submission	KT	EC
B	1/10/17	SSD Application	KT	EC
A	1/8/17	SSD Application	KT	EC
rev	date	name	by	chk

fjmt studio architecture interiors landscape urban community
sydney melbourne uk
Level 5, 70 King Street E #61 2 9251 7077 fjmtstudio.com



project
Inner Sydney High School
244 Cleveland Street
Surry Hills, Sydney NSW 2010

title
**Site
Site Plan**

scale	1:200 @ A1	first issued	9/6/2017
project code	sheet no.	revision	
ISHS	1200		D



02510m

GENERAL NOTES

ALL DIMENSIONS AND EXISTING CONDITIONS SHALL BE CHECKED AND VERIFIED BY THE CONTRACTOR BEFORE PROCEEDING WITH THE WORK

ALL LEVELS RELATIVE TO 'AUSTRALIAN HEIGHT DATUM'

DO NOT SCALE DRAWINGS

USE FIGURED DIMENSIONS ONLY

legend

SITE BOUNDARY

HIGH TRAFFIC ROAD

LOW TRAFFIC ROAD

BUS LANE

PEDESTRIAN ENTRY

VEHICULAR ACCESS

PEDESTRIAN EGRESS

D	9/10/17	RTS Submission	KT	EC
C	20/9/17	RTS Submission	KT	EC
B	11/9/17	SSD Application	KT	EC
A	19/17	SSD Application	KT	EC
rev	date	name	by	chk

fjmt studio architecture interiors landscape urban community

sdney melbourne uk

Level 5, 70 King Street E +61 2 9251 7077

fjmtstudio.com

fjmt

project

Inner Sydney High School

244 Cleveland Street

Surry Hills, Sydney NSW 2010

title

Site

Site Analysis

scale

1:200 @ A1

first issued

9/6/2017

project code

sheet no.

revision

ISHS

1201

D

ALL DIMENSIONS AND EXISTING CONDITIONS SHALL BE
 ○ CHECKED AND VERIFIED BY THE CONTRACTOR
 BEFORE PROCEEDING WITH THE WORK

- ◊ ALL LEVELS RELATIVE TO 'AUSTRALIAN HEIGHT DATUM'
- ◊ DO NOT SCALE DRAWINGS.
- ◊ USE FIGURED DIMENSIONS ONLY

- Administration / Staff Hub
- Student and Community Hub
- Movement Complex
- Learning Community - General + Fitness
- Learning Community - Media + Performing Arts
- Amenities, Services + Storage
- Learning Community - General
- Learning Community - General STE(a)M
- Learning Community - Specialist STE(a)M
- Learning Community - Visual Arts
- Learning Community - Design + Technology
- Learning Community - Food Technology

- 1 Rationalisation of building structure resulting in improved planning efficiencies and reduction in building footprint.
- 2 Structural grid realigned to provide clear spans over the Movement Complex
- 3 Access / Egress stair reviewed, provision of a clearer circulation strategy to meet code and assist way finding.



fjmt studio architecture interiors landscape urban community
sydney melbourne uk
 Level 5, 70 King Street t +61 2 9251 7077 w fjmtstudio.com

project
Inner Sydney High School
244 Cleveland Street
Surry Hills, Sydney NSW 2010

title
General Arrangement Plans
Basement Plan

scale	1:200 @ A1	first issued	9/6/2017
-------	------------	--------------	----------

project code	sheet no.	revision
--------------	-----------	----------

ISHS 2001 D

ALL DIMENSIONS AND EXISTING CONDITIONS SHALL BE
CHECKED AND VERIFIED BY THE CONTRACTOR
BEFORE PROCEEDING WITH THE WORK

ALL LEVELS RELATIVE TO 'AUSTRALIAN HEIGHT DATUM'

DO NOT SCALE DRAWINGS.
USE FIGURED DIMENSIONS ONLY

- Administration / Staff Hub
- Student and Community Hub
- Movement Complex
- Learning Community - General + Fitness
- Learning Community - Media + Performing Arts
- Amenities, Services + Storage
- Learning Community - General
- Learning Community - General STE(a)M
- Learning Community - Specialist STE(a)M
- Learning Community - Visual Arts
- Learning Community - Design + Technology
- Learning Community - Food Technology

- 1 Design Development of Podium Form and the relationship of ground plane and park
- 2 Revised stair configuration providing a clearer access/egress circulation strategy to meet code requirements and improve wayfinding.
- 3 Realignment and separation of eastern infill to provide additional clearances from heritage fabric and increased amenity.
- 4 Development of carpark design in response to flood mitigation.
- 5 Removal of proposed lift.

fjmt studio architecture interiors landscape urban community
sydney melbourne uk
level 5, 70 King Street t +61 2 9251 7077 w fjmtstudio.com

scale	1:200 @ A1	first issued	9/6/2017
-------	------------	--------------	----------

project code	sheet no.	revision
--------------	-----------	----------

ISHS 2002 D



0 2 5 10m

- GENERAL NOTES**
- ALL DIMENSIONS AND EXISTING CONDITIONS SHALL BE CHECKED AND VERIFIED BY THE CONTRACTOR BEFORE PROCEEDING WITH THE WORK
 - ALL LEVELS RELATIVE TO 'AUSTRALIAN HEIGHT DATUM'
 - DO NOT SCALE DRAWINGS
 - USE FIGURED DIMENSIONS ONLY

Legend

- Administration / Staff Hub
- Student and Community Hub
- Movement Complex
- Learning Community - General + Fitness
- Learning Community - Media + Performing Arts
- Amenities, Services + Storage
- Learning Community - General
- Learning Community - General STE(a)M
- Learning Community - Specialist STE(a)M
- Learning Community - Visual Arts
- Learning Community - Design + Technology
- Learning Community - Food Technology

REVISIONS

- Design Development of Podium Form and the relationship of ground plane and park.
- Revised stair configuration providing a clearer access/egress circulation strategy to meet code requirements and improve wayfinding.
- Realignment and separation of entry forecourt and bridge to provide additional clearances from heritage fabric, a broader entry at the access gates and improved wayfinding.
- Detailed review and development of existing building levels and the provision of compliant equitable access to all areas.
- Removal of proposed lift.

D	9/10/17	RTS Submission	KT	EC
C	20/9/17	RTS Submission	KT	EC
B	1/10/17	SSD Application	KT	EC
A	9/8/17	SSD Application	KT	EC
rev	date	name	by	chk

fjmt studio architecture interiors landscape urban community
sydney melbourne uk
Level 5, 70 King Street t +61 2 9251 7077 w fjmtstudio.com



project
Inner Sydney High School
244 Cleveland Street
Surry Hills, Sydney NSW 2010

title
General Arrangement Plans
Ground Floor Plan

scale 1:200 @ A1 first issued 9/8/2017

project code sheet no. revision

ISHS 2003 D

02510

02510

GENERAL NOTES

ALL DIMENSIONS AND EXISTING CONDITIONS SHALL BE CHECKED AND VERIFIED BY THE CONTRACTOR BEFORE PROCEEDING WITH THE WORK

ALL LEVELS RELATIVE TO 'AUSTRALIAN HEIGHT DATUM'

DO NOT SCALE DRAWINGS

USE FIGURED DIMENSIONS ONLY

legend

Administration / Staff Hub

Student and Community Hub

Movement Complex

Learning Community - General + Fitness

Learning Community - Media + Performing Arts

Amenities, Services + Storage

Learning Community - General

Learning Community - General STE(a)M

Learning Community - Specialist STE(a)M

Learning Community - Visual Arts

Learning Community - Design + Technology

Learning Community - Food Technology

REVISIONS

1

Design Development of Podium Form and the relationship of ground plane and park.

2

Revised stair configuration providing a clearer access/egress circulation strategy to meet code requirements and improve wayfinding.

3

Refined and reduced bridge links to heritage buildings.

4

Removal of proposed lift.



D	9/10/17	RTS Submission	KT	EC
C	20/9/17	RTS Submission	KT	EC
B	11/9/17	SSD Application	KT	EC
A	9/8/17	SSD Application	KT	EC
rev	date	name	by	chk

fjmt studio architecture interiors landscape urban community

sydney melbourne uk

Level 5, 70 King Street t +61 2 9251 7077 w fjmtstudio.com

project

Inner Sydney High School

244 Cleveland Street

Surry Hills, Sydney NSW 2010

title

General Arrangement Plans

Level 1

scale

1:200 @ A1

first issued

9/8/2017

project code

sheet no.

revision

ISHS

2004

D

GENERAL NOTES

- ALL DIMENSIONS AND EXISTING CONDITIONS SHALL BE CHECKED AND VERIFIED BY THE CONTRACTOR BEFORE PROCEEDING WITH THE WORK
- ALL LEVELS RELATIVE TO 'AUSTRALIAN HEIGHT DATUM'
- DO NOT SCALE DRAWINGS
- USE FIGURED DIMENSIONS ONLY

- Legend
- Administration / Staff Hub
 - Student and Community Hub
 - Movement Complex
 - Learning Community - General + Fitness
 - Learning Community - Media + Performing Arts
 - Amenities, Services + Storage
 - Learning Community - General
 - Learning Community - General STE(a)M
 - Learning Community - Specialist STE(a)M
 - Learning Community - Visual Arts
 - Learning Community - Design + Technology
 - Learning Community - Food Technology

- REVISIONS**
- Northern building line reduced approx 2m to the south.
 - Structural systems review - reduction of transfers, rationalisation of column placement to provide columns to edges of spaces.
 - Revised stair configuration providing a clearer access/egress circulation strategy to meet code requirements and improve wayfinding.



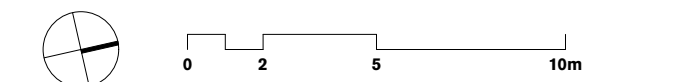
01	11/9/17	DRAFT Response to Submission	KT
rev	date	name	by chk

fjmt studio architecture interiors landscape urban community
sydney melbourne uk
Level 5, 70 King Street E +61 2 9251 7077 fjmtstudio.com

project
Inner Sydney High School
244 Cleveland Street
Surry Hills, Sydney NSW 2010

title
**General Arrangement Plans
Level 2-3**

scale	1:200 @ A1	first issued	9/6/2017
project code	sheet no.	revision	
ISHS	2005		01



- GENERAL NOTES**
- ALL DIMENSIONS AND EXISTING CONDITIONS SHALL BE
 - CHECKED AND VERIFIED BY THE CONTRACTOR BEFORE PROCEEDING WITH THE WORK
 - ALL LEVELS RELATIVE TO 'AUSTRALIAN HEIGHT DATUM'
 - DO NOT SCALE DRAWINGS
 - USE FIGURED DIMENSIONS ONLY

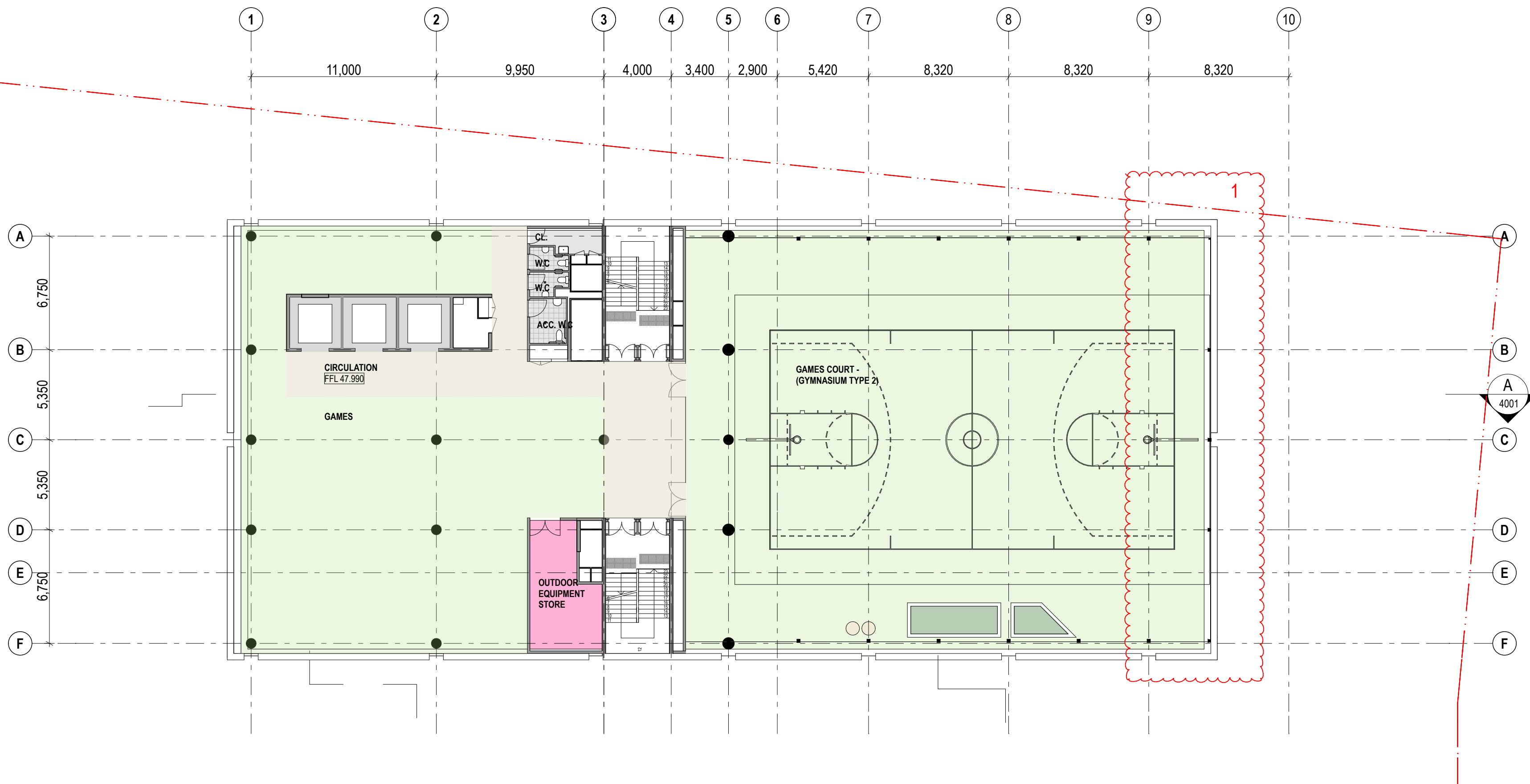
legend

- Administration / Staff Hub
- Student and Community Hub
- Movement Complex
- Learning Community - General + Fitness
- Learning Community - Media + Performing Arts
- Amenities, Services + Storage
- Learning Community - General
- Learning Community - General STE(a)M
- Learning Community - Specialist STE(a)M
- Learning Community - Visual Arts
- Learning Community - Design + Technology
- Learning Community - Food Technology

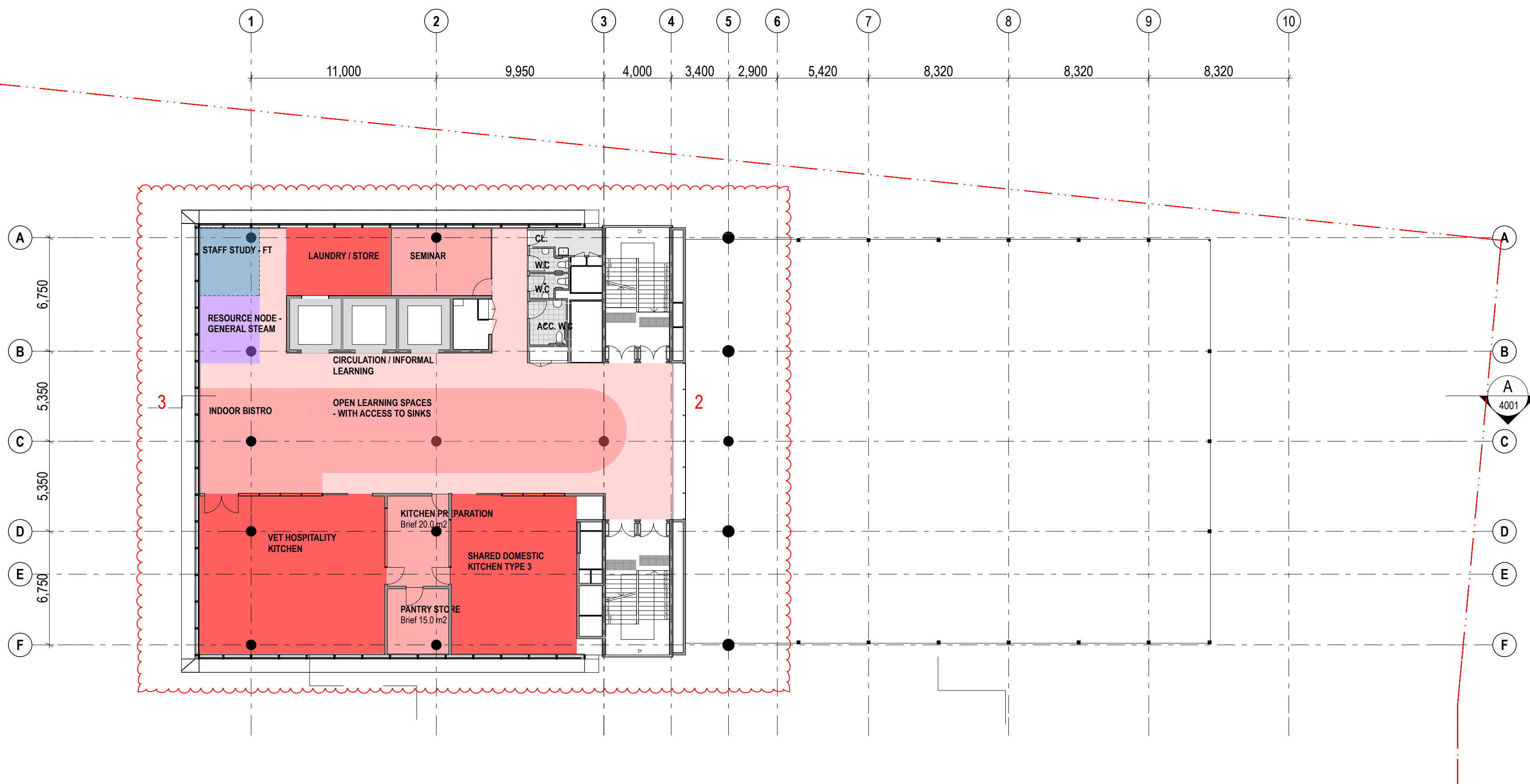
REVISIONS

- Northern building line reduced approx 2m to the south.
- Relocation of one studio floor level into the tower.
- Rationalisation of the Tower form and structure to improve functional planning. Involving the removal of the twisted form and realignment of the structural grid.

1 PLAN Level 4 Games Terrace
1:200



2 PLAN Level 5
1:200



D	9/10/17	RTS Submission	KT	EC
C	20/9/17	RTS Submission	KT	EC
B	1/10/17	SSD Application	KT	EC
A	9/8/17	SSD Application	KT	EC
rev	date	name	by	chk

fjmt studio architecture interiors landscape urban community
sydney melbourne uk
Level 5, 70 King Street E +61 2 9251 7077 • fjmtstudio.com

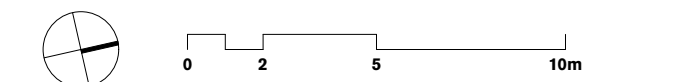
project
Inner Sydney High School
244 Cleveland Street
Surry Hills, Sydney NSW 2010

title
**General Arrangement Plans
Level 4-5**

scale 1:200 @ A1 first issued 9/8/2017

project code sheet no. revision

ISHS 2006 D



- GENERAL NOTES**
- ALL DIMENSIONS AND EXISTING CONDITIONS SHALL BE CHECKED AND VERIFIED BY THE CONTRACTOR BEFORE PROCEEDING WITH THE WORK
 - ALL LEVELS RELATIVE TO 'AUSTRALIAN HEIGHT DATUM'
 - DO NOT SCALE DRAWINGS
 - USE FIGURED DIMENSIONS ONLY

legend

- Administration / Staff Hub
- Student and Community Hub
- Movement Complex
- Learning Community - General + Fitness
- Learning Community - Media + Performing Arts
- Amenities, Services + Storage
- Learning Community - General
- Learning Community - General STE(a)M
- Learning Community - Specialist STE(a)M
- Learning Community - Visual Arts
- Learning Community - Design + Technology
- Learning Community - Food Technology

REVISIONS

- Rationalisation of the Tower form and structure to improve functional planning. Involving the removal of the twisted form and realignment of the structural grid.
- Enlarged lower floor plate to accommodate a full year group.

1 PLAN Level 6
1:200



2 PLAN Level 7
1:200



D	9/10/17	RTS Submission	KT	EC
C	20/9/17	RTS Submission	KT	EC
B	1/10/17	SSD Application	KT	EC
A	9/8/17	SSD Application	KT	EC
rev	date	name	by	chk

fjmt studio architecture interiors landscape urban community
sydney melbourne uk
Level 5, 70 King Street • +61 2 9251 7077 • fjmtstudio.com



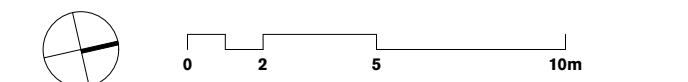
project
Inner Sydney High School
244 Cleveland Street
Surry Hills, Sydney NSW 2010

title
**General Arrangement Plans
Level 6-7**

scale 1:200 @ A1 first issued 9/8/2017

project code sheet no. revision

ISHS 2007 D



- GENERAL NOTES**
- ALL DIMENSIONS AND EXISTING CONDITIONS SHALL BE
 - CHECKED AND VERIFIED BY THE CONTRACTOR BEFORE PROCEEDING WITH THE WORK
 - ALL LEVELS RELATIVE TO 'AUSTRALIAN HEIGHT DATUM'
 - DO NOT SCALE DRAWINGS
 - USE FIGURED DIMENSIONS ONLY

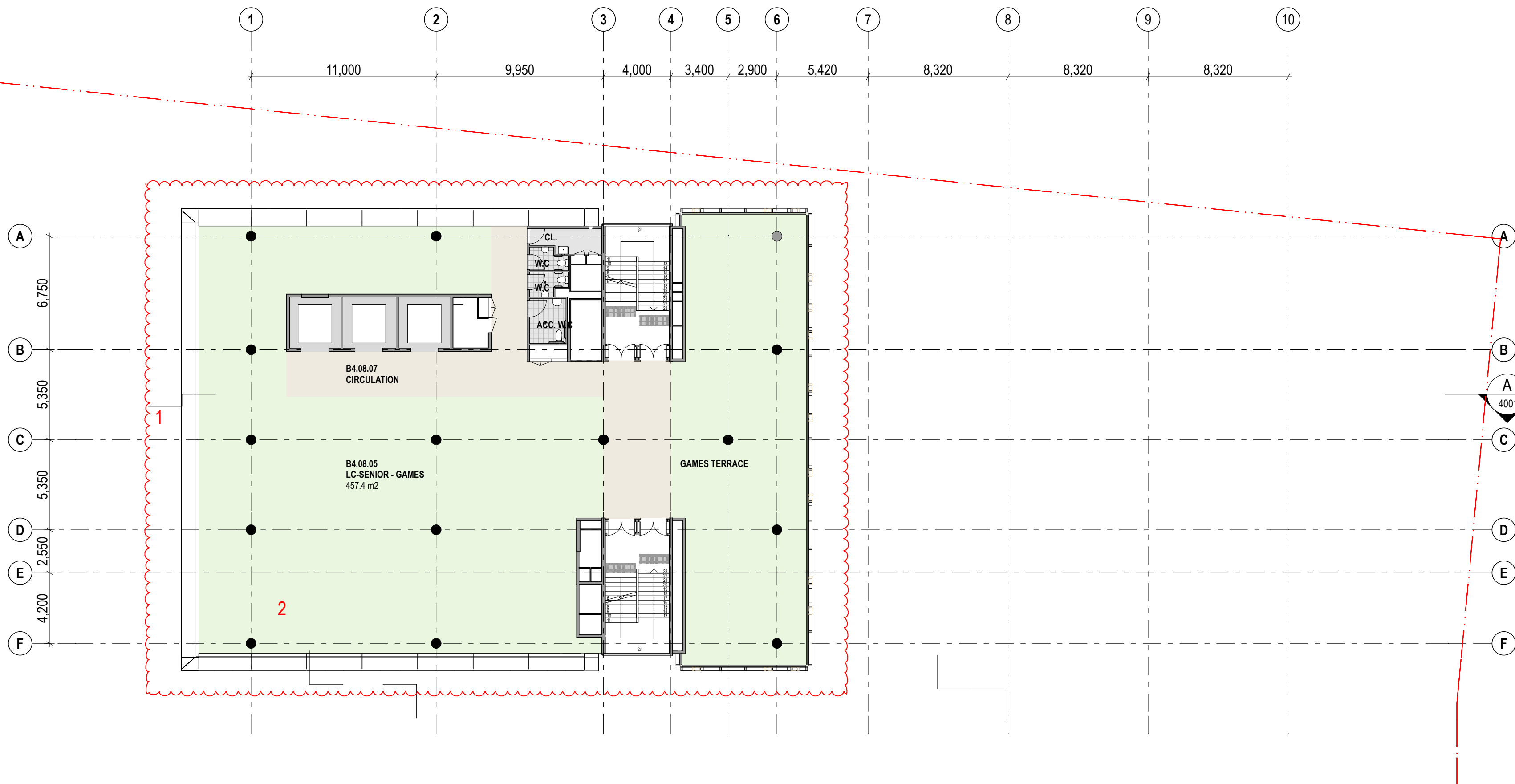
legend

- Administration / Staff Hub
- Student and Community Hub
- Movement Complex
- Learning Community - General + Fitness
- Learning Community - Media + Performing Arts
- Amenities, Services + Storage
- Learning Community - General
- Learning Community - General STE(a)M
- Learning Community - Specialist STE(a)M
- Learning Community - Visual Arts
- Learning Community - Design + Technology
- Learning Community - Food Technology

REVISIONS

- Rationalisation of the Tower form and structure to improve functional planning. Involving the removal of the twisted form and realignment of the structural grid.
- Enlarged lower floor plate to accommodate a full year group.

1 PLAN Level 8 Tower Terrace
1:200



2 PLAN Level 9
1:200



D	9/10/17	RTS Submission	KT	EC
C	20/9/17	RTS Submission	KT	EC
B	1/10/17	SSD Application	KT	EC
A	9/8/17	SSD Application	KT	EC
rev	date	name	by	chk

fjmt studio architecture interiors landscape urban community
sydney melbourne uk
Level 5, 70 King Street • +61 2 9251 7077 • fjmtstudio.com



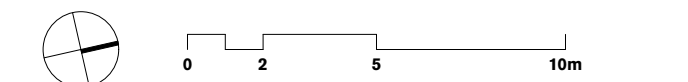
project
Inner Sydney High School
244 Cleveland Street
Surry Hills, Sydney NSW 2010

title
**General Arrangement Plans
Level 8-9**

scale 1:200 @ A1 first issued 9/8/2017

project code sheet no. revision

ISHS 2008 D



- GENERAL NOTES**
- ALL DIMENSIONS AND EXISTING CONDITIONS SHALL BE CHECKED AND VERIFIED BY THE CONTRACTOR BEFORE PROCEEDING WITH THE WORK
 - ALL LEVELS RELATIVE TO 'AUSTRALIAN HEIGHT DATUM'
 - DO NOT SCALE DRAWINGS
 - USE FIGURED DIMENSIONS ONLY

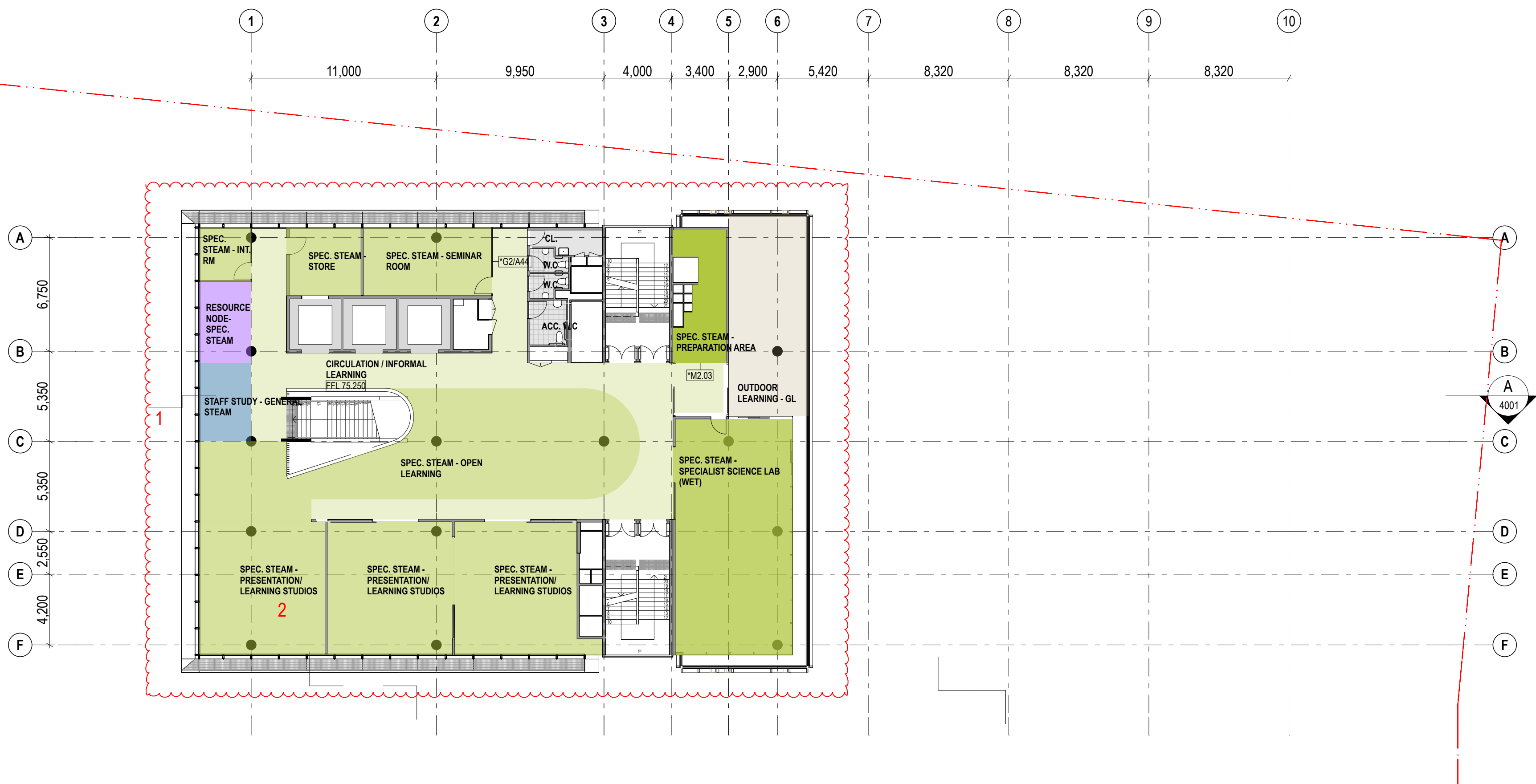
legend	
■	Administration / Staff Hub
■	Student and Community Hub
■	Movement Complex
■	Learning Community - General + Fitness
■	Learning Community - Media + Performing Arts
■	Amenities, Services + Storage
■	Learning Community - General
■	Learning Community - General STE(a)M
■	Learning Community - Specialist STE(a)M
■	Learning Community - Visual Arts
■	Learning Community - Design + Technology
■	Learning Community - Food Technology

- REVISIONS**
- Rationalisation of the Tower form and structure to improve functional planning. Involving the removal of the twisted form and realignment of the structural grid.
 - Enlarged lower floor plate to accommodate a full year group.

1 PLAN Level 10
1:200



2 PLAN Level 11
1:200



rev	date	name	by	chk
D	9/10/17	RTS Submission	KT	EC
C	20/9/17	RTS Submission	KT	EC
B	1/9/17	SSD Application	KT	EC
A	1/8/17	SSD Application	KT	EC

fjmt studio architecture interiors landscape urban community
sydney melbourne uk
Level 5, 70 King Street • +61 2 9251 7077 • fjmtstudio.com

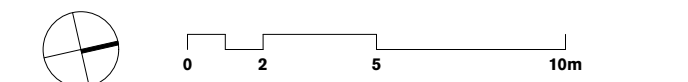
project
Inner Sydney High School
244 Cleveland Street
Surry Hills, Sydney NSW 2010

title
**General Arrangement Plans
Level 10-11**

scale 1:200 @ A1 first issued 9/6/2017

project code sheet no. revision

ISHS 2009 D



- GENERAL NOTES**
- ALL DIMENSIONS AND EXISTING CONDITIONS SHALL BE
 - CHECKED AND VERIFIED BY THE CONTRACTOR BEFORE PROCEEDING WITH THE WORK
 - ALL LEVELS RELATIVE TO 'AUSTRALIAN HEIGHT DATUM'
 - DO NOT SCALE DRAWINGS
 - USE FIGURED DIMENSIONS ONLY

- Legend
- Administration / Staff Hub
 - Student and Community Hub
 - Movement Complex
 - Learning Community - General + Fitness
 - Learning Community - Media + Performing Arts
 - Amenities, Services + Storage
 - Learning Community - General
 - Learning Community - General STE(a)M
 - Learning Community - Specialist STE(a)M
 - Learning Community - Visual Arts
 - Learning Community - Design + Technology
 - Learning Community - Food Technology

- REVISIONS**
- | | |
|---|--|
| 1 | Roof top plant relocated to the south to provide better amenity to the roof top terrace. |
|---|--|



1 PLAN Level 12 Roof Plant
1:200

D	9/10/17	RTS Submission	KT	EC
C	20/9/17	RTS Submission	KT	EC
B	11/9/17	SSD Application	KT	EC
A	9/8/17	SSD Application	KT	EC
rev	date	name	by	chk

fjmt studio architecture interiors landscape urban community
sydney melbourne uk
Level 5, 70 King Street t +61 2 9251 7077 w fjmtstudio.com



project
Inner Sydney High School
244 Cleveland Street
Surry Hills, Sydney NSW 2010

title
**General Arrangement Plans
Level 12 Roof**

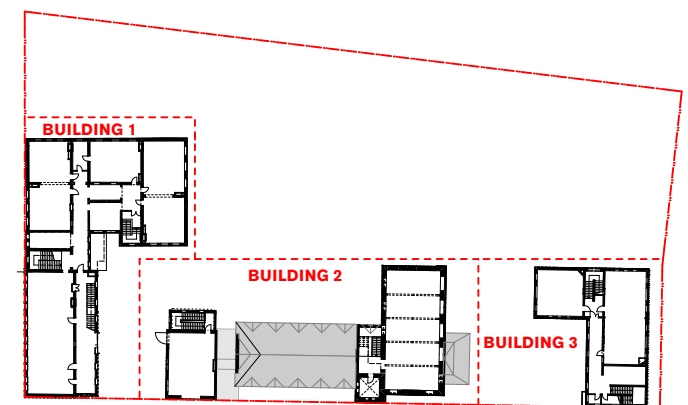
scale	1:200 @ A1	first issued	9/8/2017
project code	sheet no.	revision	
ISHS	2010	D	

02510

GENERAL NOTES

ALL DIMENSIONS AND EXISTING CONDITIONS SHALL BE
CHECKED AND VERIFIED BY THE CONTRACTOR
BEFORE PROCEEDING WITH THE WORK
ALL LEVELS RELATIVE TO AUSTRALIAN HEIGHT DATUM
DO NOT SCALE DRAWINGS
USE FIGURED DIMENSIONS ONLY

legend



HERITAGE BUILDING NOTES

1. Existing construction and dimensions shown on these documents are indicative only, and must be verified on site prior to the commencement of any construction or fabrication.

2. The contractor must approach the works in a very careful, methodical and meticulous manner. Regular on site meetings must be carried out with relevant stakeholders and contractors.

BOUNDARY LINE

DEMOLITION LEGEND AND NOTES

Proposed wall demolition

Proposed ceiling demolition

Footings reference area

Heritage fixed items. Protection during works required

Heritage doors

Existing heritage trees to be retained. Refer to landscape demolition plans.

A. Non structural wall removal.

B. Heritage sandstone pile, plinth and fence to be protected during works.

C. Existing ceiling to be removed. Remove all associated support systems.

D. Remove remaining slab and retaining walls on lower ground floor and all footings associated.

E. Remove all remaining footings on indicated reference area.

F. Remove indicated builders.

G. Remove window and wall under to replace with door.

H. Slab of existing slab by 150mm to allow for ramp.

I. Remove all bitumen floor finish on courtyard and external concrete steps between level changes.

J. Existing down pipe and steel column embedded on original fabric to be removed.

K. Demolish remaining existing brick planters.

L. Remove perimeter fence and replace with temporary fence as per specifications.

M. Reinstall former existing arch or window. Remove infill.

N. New openings with structural intervention required.

P. Star and associated wall removal.

Q. Slab demolition. Refer to Structural drawings.

R. Internal window demolition.

S. Remove Section of existing window.

T. Door opening direction to be flipped.

REVISIONS

1

Removal of proposed lift

CLEVELAND STREET



CHALMERS STREET

D	9/10/17	RTS Submission	CM	EC
C	20/9/17	RTS Submission	CM	EC
B	1/9/17	SSD Application	CM	EC
A	9/8/17	SSD Application	CM	EC
rev	date	name	by	chk

fjmt studio architecture interiors landscape urban community

sydney melbourne uk

Level 5, 70 King Street t +61 2 9251 7077 w fjmtstudio.com

fjmt

project

Inner Sydney High School
244 Cleveland Street
Surry Hills, Sydney NSW 2010

title

Demolition Plans
Lower Ground Floor Plan

scale 1:200 @ A1 first issued 11/09/2017

project code sheet no. revision

ISHS 2101 D

02510

GENERAL NOTES

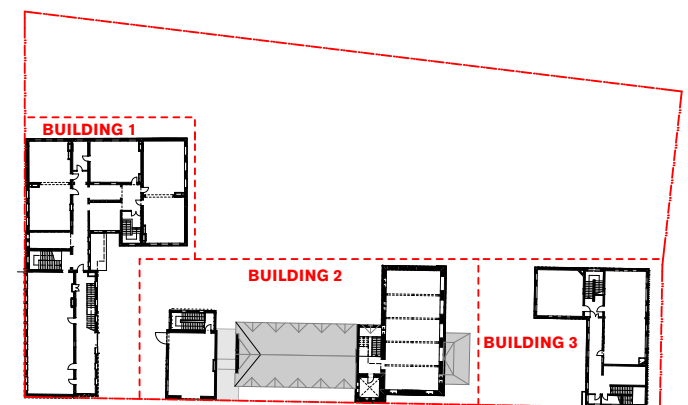
ALL DIMENSIONS AND EXISTING CONDITIONS SHALL BE CHECKED AND VERIFIED BY THE CONTRACTOR BEFORE PROCEEDING WITH THE WORK

ALL LEVELS RELATIVE TO 'AUSTRALIAN HEIGHT DATUM'

DO NOT SCALE DRAWINGS

USE FIGURED DIMENSIONS ONLY

legend



HERITAGE BUILDINGS NOTES

1. Existing construction and dimensions shown on these documents are indicative only, and must be verified on site prior to the commencement of any construction or fabrication.

2. The contractor must approach the works in a very careful, methodical and meticulous manner. Regular on site meetings must be carried out with relevant stakeholders and contractors.

BOUNDARY LINE

DEMOLITION LEGEND AND NOTES

Proposed wall demolition

Proposed ceiling demolition

Footings reference area

Heritage fixed items. Protection during works required

Heritage doors

Existing heritage trees to be retained. Refer to landscape demolition plans.

A. Non Structural wall removal.

B. Heritage sandstone pile, plinth and fence to be protected during works.

C. Existing ceiling to be removed. Remove all associated support systems.

D. Remove remaining slab and retaining walls on lower ground floor and all footings associated.

E. Remove all remaining footings on indicated reference area.

F. Remove indicated builders.

G. Remove window and wall under to replace with door.

H. Bash of existing slab by 150mm to allow for ramp.

I. Remove all blumen floor finish on courtyards and external concrete steps between level changes.

J. Existing down pipe and steel column embedded on original fabric to be removed.

K. Demolish remaining existing brick planters.

L. Remove perimeter fence and replace with temporary fence as per specifications

M. Reinstall former existing arch or window. Remove infill.

N. New openings with structural intervention required.

P. Star and associated wall removal.

Q. Slab demolition. Refer to Structural drawings

R. Internal window demolition.

S. Remove Section of existing window.

T. Door opening direction to be flipped.

REVISIONS

1 Removal of proposed lift

2 Retain mezzanine

D	9/10/17	RTS Submission	CM	EC
C	20/9/17	RTS Submission	CM	EC
B	1/9/17	SSD Application	CM	EC
A	9/8/17	SSD Application	CM	EC
rev	date	name	by	chk

fjmt studio architecture interiors landscape urban community
sydney melbourne uk
Level 5, 70 King Street t +61 2 9251 7077 w fjmtstudio.com



project
Inner Sydney High School
244 Cleveland Street
Surry Hills, Sydney NSW 2010

title
Demolition Plans
Ground Floor Plan - Street level & Mezzanine

scale 1:200 @ A1 first issued 11/09/2017

project code sheet no. revision

ISHS 2102 D

CLEVELAND STREET

CHALMERS STREET



02510

GENERAL NOTES

ALL DIMENSIONS AND EXISTING CONDITIONS SHALL BE

CHECKED AND VERIFIED BY THE CONTRACTOR

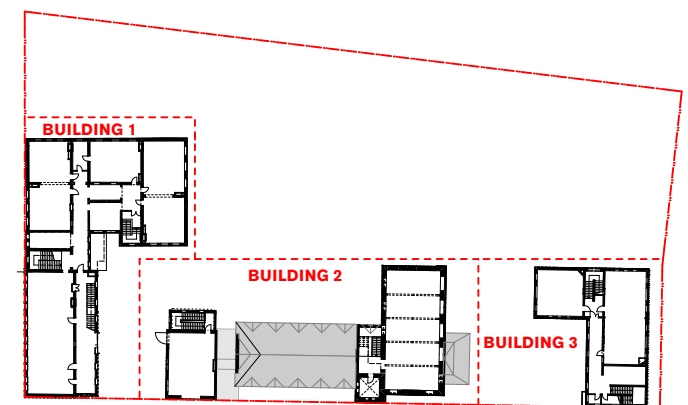
BEFORE PROCEEDING WITH THE WORK

ALL LEVELS RELATIVE TO 'AUSTRALIAN HEIGHT DATUM'

DO NOT SCALE DRAWINGS

USE FIGURED DIMENSIONS ONLY

legend



HERITAGE BUILDING NOTES

1. Existing construction and dimensions shown on these documents are indicative only, and must be verified on site prior to the commencement of any construction or fabrication.

2. The contractor must approach the works in a very careful, methodical and meticulous manner. Regular on site meetings must be carried out with relevant stakeholders and contractors.

BOUNDARY LINE

DEMOLITION LEGEND AND NOTES

Proposed wall demolition

Proposed ceiling demolition

Footings reference area

Heritage fixed items. Protection during works required

Heritage doors

Existing heritage trees to be retained. Refer to landscape demolition plans.

A. Non Structural wall removal.

B. Heritage sandstone pile, plinth and fence to be protected during works.

C. Existing ceiling to be removed. Remove all associated support systems.

D. Remove remaining slab and retaining walls on lower ground floor and all footings associated.

E. Remove all remaining footings on indicated reference area.

F. Remove indicated builders.

G. Remove window and wall under to replace with door.

H. Slab of existing slab by 150mm to allow for ramp.

I. Remove all blumen floor finish on courtyards and external concrete steps between level changes.

J. Existing down pipe and steel column embedded on original fabric to be removed.

K. Demolish remaining existing brick planters.

L. Remove perimeter fence and replace with temporary fence as per specifications

M. Reinstall former existing arch or window. Remove infill.

N. New openings with structural intervention required.

P. Star and associated wall removal.

Q. Slab demolition. Refer to Structural drawings.

R. Internal window demolition.

S. Remove Section of existing window.

T. Door opening direction to be flipped.

REVISIONS

1

Removal of proposed lift

D	9/10/17	RTS Submission	CM	EC
C	20/9/17	RTS Submission	CM	EC
B	1/9/17	SSD Application	CM	EC
A	9/8/17	SSD Application	CM	EC
rev	date	name	by	chk

fjmt studio architecture interiors landscape urban community

sydney melbourne uk

Level 5, 70 King Street t +61 2 9251 7077 w fjmtstudio.com

fjmt

project

Inner Sydney High School

244 Cleveland Street

Surry Hills, Sydney NSW 2010

title

Demolition Plans

Level 1

scale 1:200 @ A1

first issued 11/09/2017

project code ISHS

sheet no. 2103

revision D

CLEVELAND STREET

CHALMERS STREET

02510m

GENERAL NOTES

ALL DIMENSIONS AND EXISTING CONDITIONS SHALL BE
CHECKED AND VERIFIED BY THE CONTRACTOR
BEFORE PROCEEDING WITH THE WORK
ALL LEVELS RELATIVE TO 'AUSTRALIAN HEIGHT DATUM'
DO NOT SCALE DRAWINGS
USE FIGURED DIMENSIONS ONLY

legend

BUILDING 1

BUILDING 2

BUILDING 3

HERITAGE BUILDINGS NOTES

1. Existing construction and dimensions shown on these documents are indicative only, and must be verified on site prior to the commencement of any construction or fabrication.

2. The contractor must approach the works in a very careful, methodical and meticulous manner. Regular on site meetings must be carried out with relevant stakeholders and contractors.

BOUNDARY LINE

Proposed wall demolition

Proposed ceiling demolition

Footings reference area

Heritage fixed items. Protection during works required

Heritage doors

Existing heritage trees to be retained. Refer to landscape demolition plans.

DEMOLITION LEGEND AND NOTES

A. Non Structural wall removal.

B. Heritage sandstone pila, plinth and fence to be protected during works.

C. Existing ceiling to be removed. Remove all associated support systems.

D. Remove remaining slabs and retaining walls on lower ground floor and all footings associated.

E. Remove all remaining footings on indicated reference area.

F. Remove indicated buttresses.

G. Remove window and wall under to replace with door.

H. Slab of existing slab by 150mm to allow for ramp.

I. Remove all blumen floor finish on courtyards and external concrete steps between level changes.

J. Existing down pipe and steel column embedded on original fabric to be removed.

K. Demolish remaining existing brick planters.

L. Remove perimeter fence and replace with temporary fence as per specifications.

M. Reinstall former existing arch or window. Remove infill.

N. New openings with structural intervention required.

P. Star and associated wall removal.

Q. Slab demolition. Refer to Structural drawings.

R. Internal window demolition.

S. Remove Section of existing window.

T. Door opening direction to be flipped.

REVISIONS

1 Modified Demolition



C	8/10/17	RTS Submission	CM	EC
B	20/6/17	RTS Submission	CM	EC
A	11/9/17	SSS Application	CM	EC
rev	date	name	by	chk

fjmt studio architecture interiors landscape urban community

sydney

melbourne uk

Level 5, 70 King Street • +61 2 9251 7077 • [fjmtstudio.com](#)

project

Inner Sydney High School

244 Cleveland Street

Surry Hills, Sydney NSW 2010

title

Demolition Elevations

Elevations Building 1

scale

1:200 @ A1

first issued

11/9/2017

project code

sheet no.

revision

ISHS

2201

C

0210

0

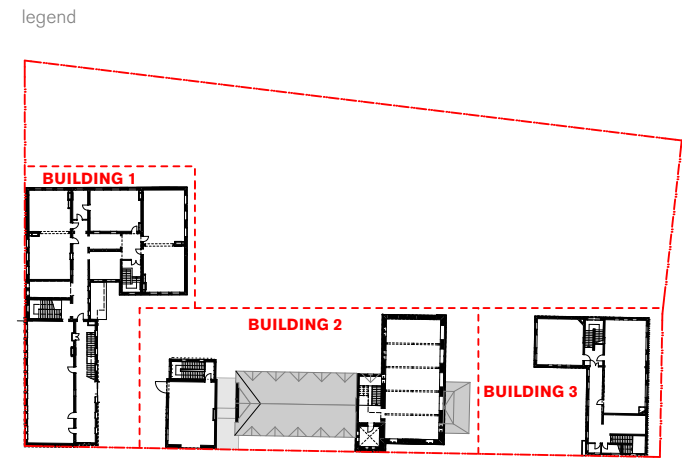
2

5

10m

GENERAL NOTES

ALL DIMENSIONS AND EXISTING CONDITIONS SHALL BE
CHECKED AND VERIFIED BY THE CONTRACTOR
BEFORE PROCEEDING WITH THE WORK
ALL LEVELS RELATIVE TO 'AUSTRALIAN HEIGHT DATUM'
DO NOT SCALE DRAWINGS
USE FIGURED DIMENSIONS ONLY



HERITAGE BUILDINGS NOTES

1. Existing construction and dimensions shown on these documents are indicative only, and must be verified on site prior to the commencement of any construction or fabrication.

2. The contractor must approach the works in a very careful, methodical and meticulous manner. Regular on site meetings must be carried out with relevant stakeholders and contractors.

BOUNDARY LINE

Proposed wall demolition

Proposed ceiling demolition

Footings reference area

Heritage fixed items. Protection during works required

Heritage doors

Existing heritage trees to be retained. Refer to landscape demolition plans.

DEMOLITION LEGEND AND NOTES

A. Non Structural wall removal.

B. Heritage sandstone pila, plinth and fence to be protected during works.

C. Existing ceiling to be removed. Remove all associated support systems.

D. Remove remaining slabs and retaining walls on lower ground floor and all footings associated.

E. Remove all remaining footings on indicated reference area.

F. Remove indicated buildings.

G. Remove window and wall under to replace with door.

H. Slab of existing slab by 150mm to allow for ramp.

I. Remove all blumen floor finish on courtyards and external concrete steps between level changes.

J. Existing down pipe and steel column embedded on original fabric to be removed.

K. Demolish remaining existing brick planters.

L. Remove perimeter fence and replace with temporary fence as per specifications.

M. Reinstate former existing arch or window. Remove infill.

N. New openings with structural intervention required.

P. Star and associated wall removal.

Q. Slab demolition. Refer to Structural drawings.

R. Internal window demolition.

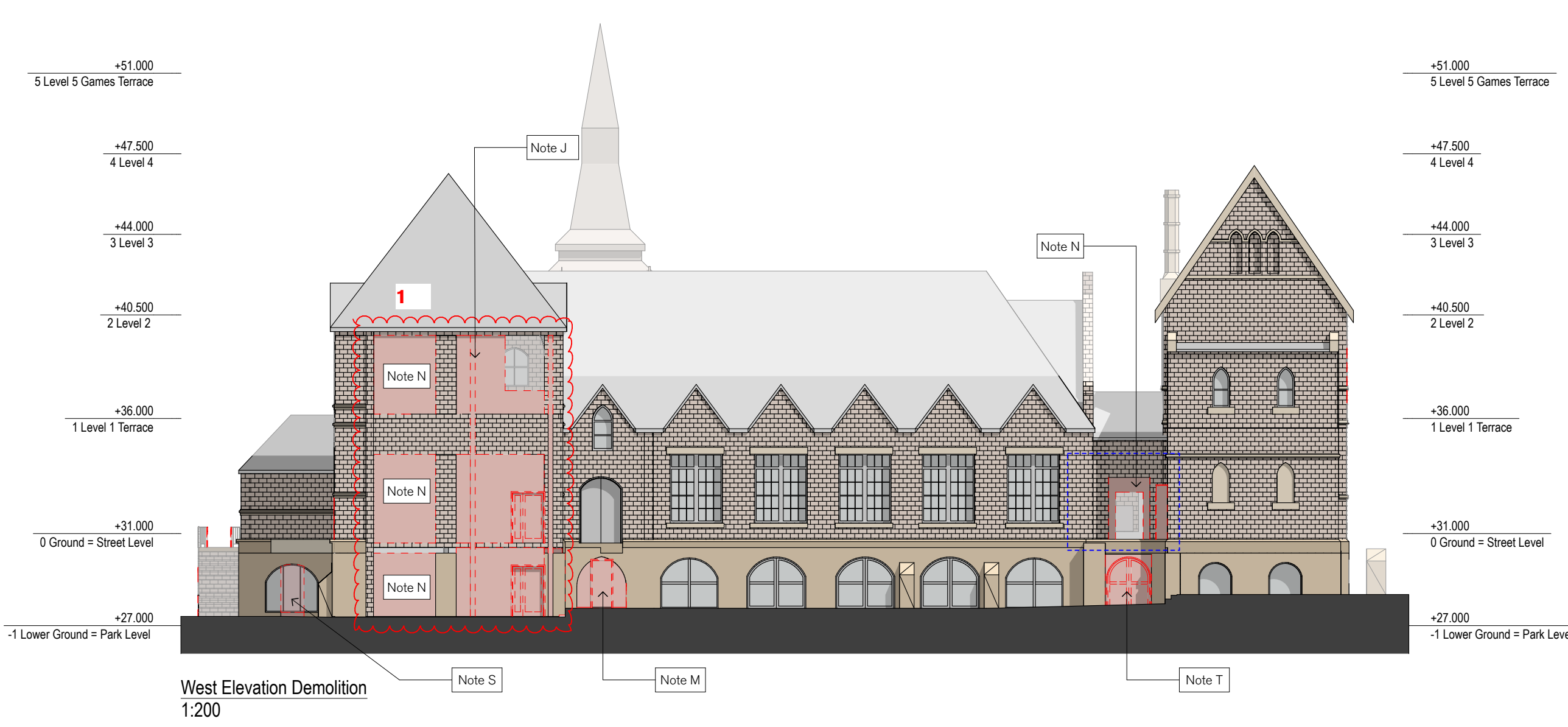
S. Remove Section of existing window.

T. Door opening direction to be flipped.

REVISIONS

1

Modified Demolition



C	8/10/17	RTS Submission	CM	EC
B	20/6/17	RTS Submission	CM	EC
A	11/9/17	S&C Application	CM	EC
rev	date	name	by	chk

fjmt studio architecture interiors landscape urban community

sydney melbourne uk

Level 5, 70 King Street t +61 2 9251 7077 w fjmtstudio.com

project

Inner Sydney High School
244 Cleveland Street
Surry Hills, Sydney NSW 2010

title

Demolition Elevations
Elevations Building 2

scale

1:200 @ A1

first issued

11/9/2017

project code

sheet no.

revision

ISHS

2202

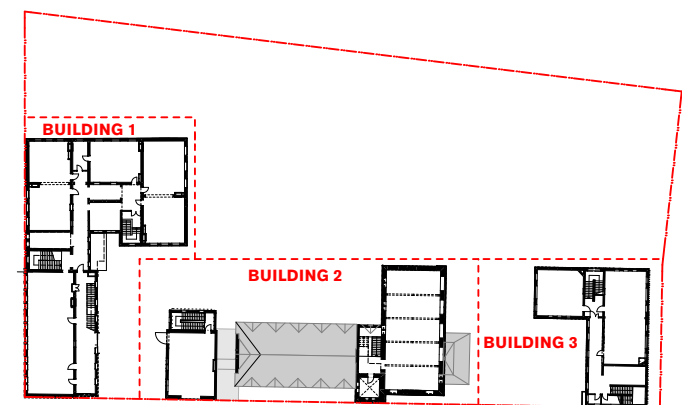
C

02510m

GENERAL NOTES

ALL DIMENSIONS AND EXISTING CONDITIONS SHALL BE
CHECKED AND VERIFIED BY THE CONTRACTOR
BEFORE PROCEEDING WITH THE WORK
ALL LEVELS RELATIVE TO 'AUSTRALIAN HEIGHT DATUM'
DO NOT SCALE DRAWINGS
USE FIGURED DIMENSIONS ONLY

legend



- HERITAGE BUILDINGS NOTES
1. Existing construction and dimensions shown on these documents are indicative only, and must be verified on site prior to the commencement of any construction or fabrication.

2. The contractor must approach the works in a very careful, methodical and meticulous manner. Regular on site meetings must be carried out with relevant stakeholders and contractors.

BOUNDARY LINE

Proposed wall demolition

Proposed ceiling demolition

Footings reference area

Heritage fixed items. Protection during works required

Heritage doors.

Existing heritage trees to be retained. Refer to landscape demolition plans.

A. Non Structural wall removal.

B. Heritage sandstone pike, plinth and fence to be protected during works.

C. Existing ceiling to be removed. Remove all associated support systems.

D. Remove remaining slabs and retaining walls on lower ground floor and all footings associated.

E. Remove all remaining footings on indicated reference area.

F. Remove indicated buildings.

G. Remove window and wall under to replace with door.

H. Slab of existing slab by 150mm to allow for ramp.

I. Remove all blumen floor finish on courtyards and external concrete steps between level changes.

J. Existing down pipe and steel column embedded on original fabric to be removed.

K. Demolish remaining existing brick planters.

L. Remove perimeter fence and replace with temporary fence as per specifications

M. Reinstall former existing arch or window. Remove infill.

N. New openings with structural intervention required.

P. Stair and associated wall removal.

Q. Slab demolition. Refer to Structural drawings

R. Internal window demolition.

S. Remove Section of existing window.

T. Door opening direction to be flipped.



C	9/10/17	RTS Submission	CM	EC
B	20/6/17	RTS Submission	CM	EC
A	11/6/17	S&C Application	CM	EC
rev	date	name	by	chk

fjmt studio architecture interiors landscape urban community

sydney melbourne uk

Level 5, 70 King Street • +61 2 9251 7077 • [fjmtstudio.com](#)

project

Inner Sydney High School
244 Cleveland Street
Surry Hills, Sydney NSW 2010

title

Demolition Elevations
Elevations Building 3

scale

1:200 @ A1

first issued

11/9/2017

project code

sheet no.

revision

ISHS

2203

C



GFA Area Schedule

project		Inner Sydney High School		code		ISHS	
				revision			
				date		08/06/17	
				doc number		2801	
		Floor (Story)	Area				
GFA							
	Basement	GFA	1,216.3				
	Lower Ground = Park Level	GFA	961.4				
	Ground = Street Level	GFA	517.8				
	Level 1 Terrace	GFA	115.5				
	Level 2	GFA	1,024.2				
	Level 3	GFA	1,134.4				
	Level 4 Games Terrace	GFA	52.4				
	Level 5	GFA	580.2				
	Level 6	GFA	759.0				
	Level 7	GFA	686.3				
	Level 8 Tower Terrace	GFA	23.8				
	Level 9	GFA	713.5				
	Level 10	GFA	731.5				
	Level 11	GFA	686.3				
			9,202.6 m²				
GFA - Outdoor Terrace							
	Ground = Street Level	GFA-Outdoor Terrace	1,101.4				
	Level 1 Terrace	GFA-Outdoor Terrace	1,527.0				
	Level 2	GFA - Outdoor Terrace	200.5				
	Level 3	GFA - Outdoor Terrace	95.9				
	Level 4 Games Terrace	GFA - Outdoor Terrace	1,264.0				
	Level 6	GFA - Outdoor Terrace	35.9				
	Level 7	GFA - Outdoor Terrace	81.1				
	Level 8 Tower Terrace	GFA - Outdoor Terrace	783.3				
	Level 9	GFA - Outdoor Terrace	81.1				
	Level 10	GFA - Outdoor Terrace	35.9				
	Level 11	GFA - Outdoor Terrace	81.1				
	Level 12 Roof Plant	GFA - Outdoor Terrace	251.1				
			5,538.3 m²				
GFA Existing Buildings							
	Lower Ground = Park Level	Building 1	454.6				
	Lower Ground = Park Level	Building 2	463.7				
	Lower Ground = Park Level	Building 3	203.8				
	Ground = Street Level	Building 1	570.8				
	Ground = Street Level	Building 2	482.9				
	Ground = Street Level	Building 3	208.4				
	Level 1 Terrace	Building 1	583.7				
	Level 1 Terrace	Building 2	236.0				
	Level 1 Terrace	Building 3	209.2				
			3,413.1 m²				
			18,154.0 m²				

GFA definition (LEP 2012 - NSW Legislation)

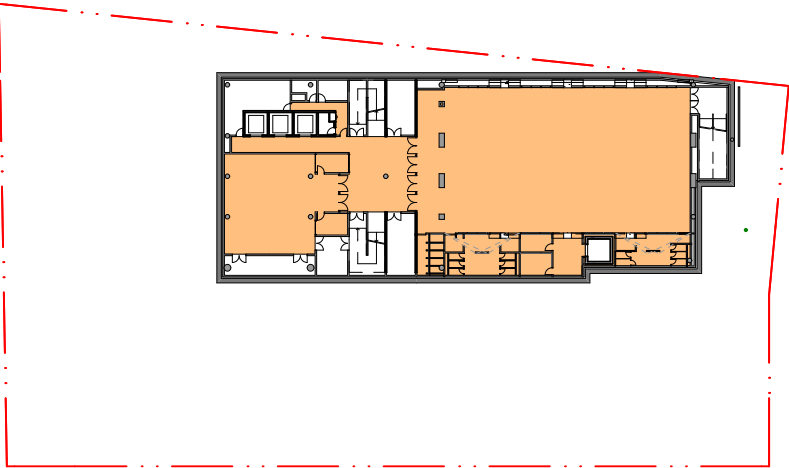
gross floor area means the sum of the floor area of each floor of a building measured from the internal face of external walls, or from the internal face of walls separating the building from any other building, measured at a height of 1.4 metres above the floor, and includes:
(a) the area of a mezzanine, and
(b) habitable rooms in a basement or an attic, and
(c) any shop, auditorium, cinema, and the like, in a basement or attic, but excludes:
(d) any area for common vertical circulation, such as lifts and stairs, and (e) any basement:
(i) storage, and
(ii) vehicular access, loading areas, garbage and services, and
(f) plant rooms, lift towers and other areas used exclusively for mechanical services or ducting, and
(g) car parking to meet any requirements of the consent authority (including access to that car parking), and (h) any space used for the loading or unloading of goods (including access to it), and
(i) terraces and balconies with outer walls less than 1.4 metres high, and
(j) voids above a floor at the level of a storey or storey above.

rev	date	name	by	chk
B	9/6/17	SSD Application	KT	EC
C	29/9/17	SSD Application	KT	EC

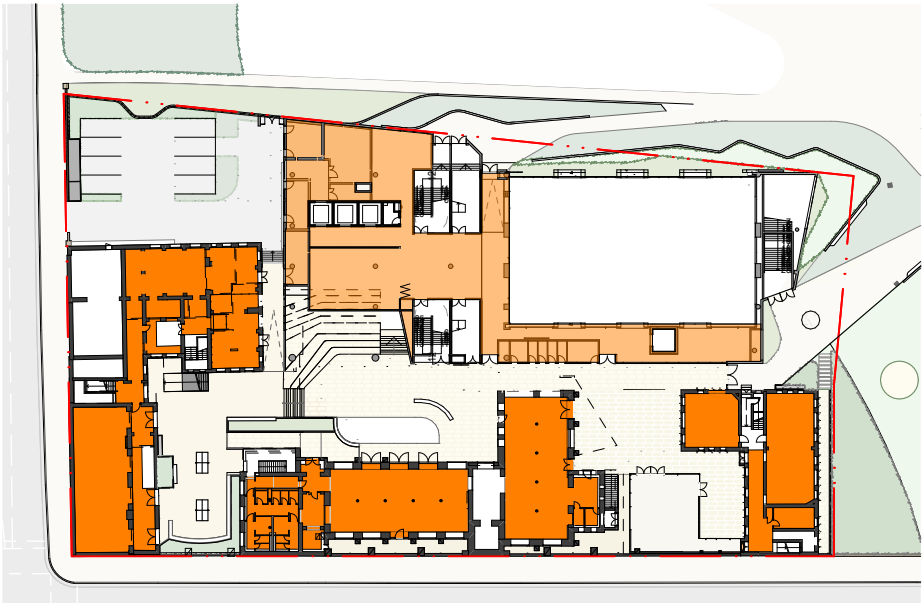
GFA definition (LEP 2012 - NSW Legislation)

gross floor area means the sum of the floor area of each floor of a building measured from the internal face of external walls, or from the internal face of walls separating the building from any other building, measured at a height of 1.4 metres above the floor, and includes:

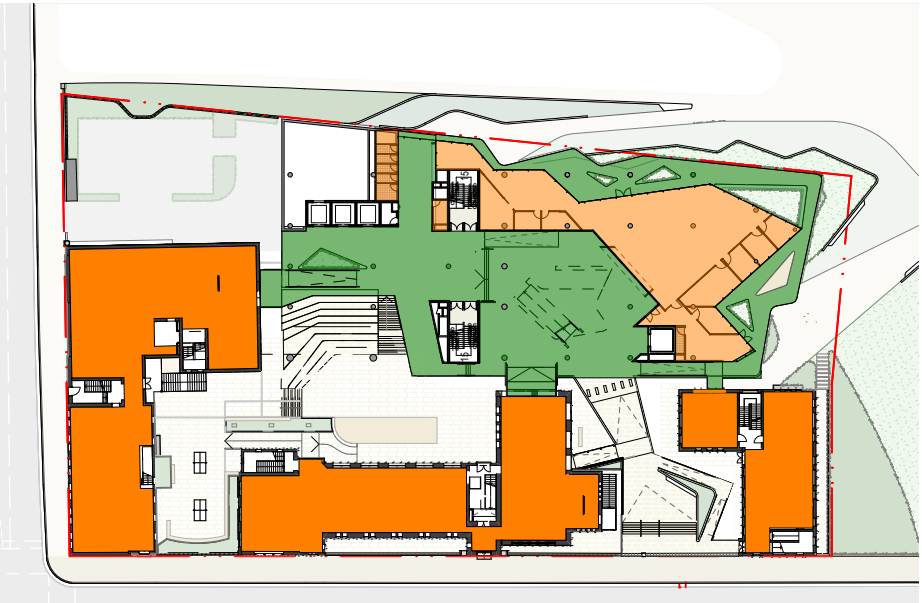
- (a) the area of a mezzanine, and
- (b) habitable rooms in a basement or an attic, and
- (c) any shop, auditorium, cinema, and the like, in a basement or attic, but excludes:
- (d) any area for common vertical circulation, such as lifts and stairs, and (e) any basement:
- (i) storage, and
- (ii) vehicular access, loading areas, garbage and services, and
- (f) plant rooms, lift towers and other areas used exclusively for mechanical services or ducting, and
- (g) car parking to meet any requirements of the consent authority (including access to that car parking), and (h) any space used for the loading or unloading of goods (including access to it), and
- (i) terraces and balconies with outer walls less than 1.4 metres high, and
- (j) voids above a floor at the level of a storey or storey above.



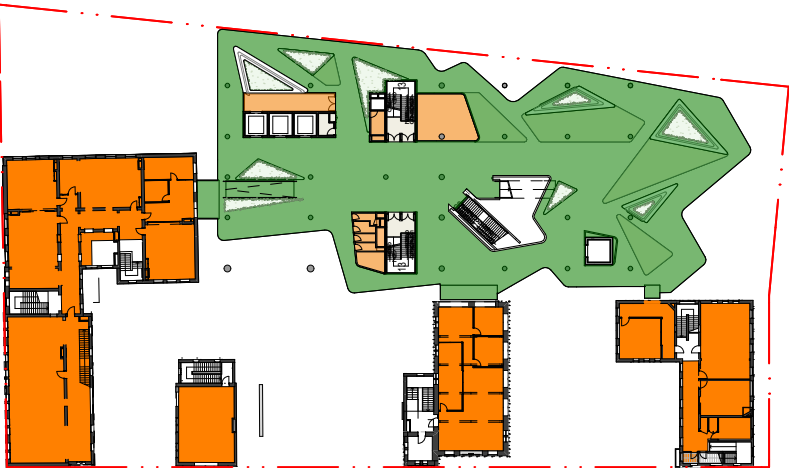
Basement



Lower Ground



Ground Floor



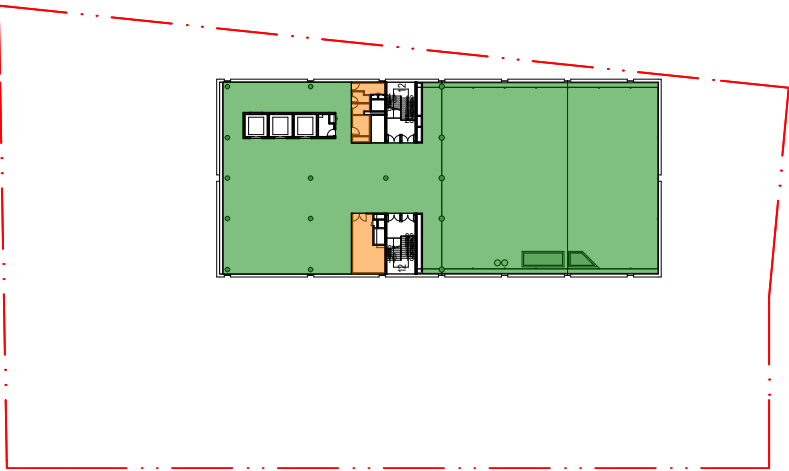
Level 1



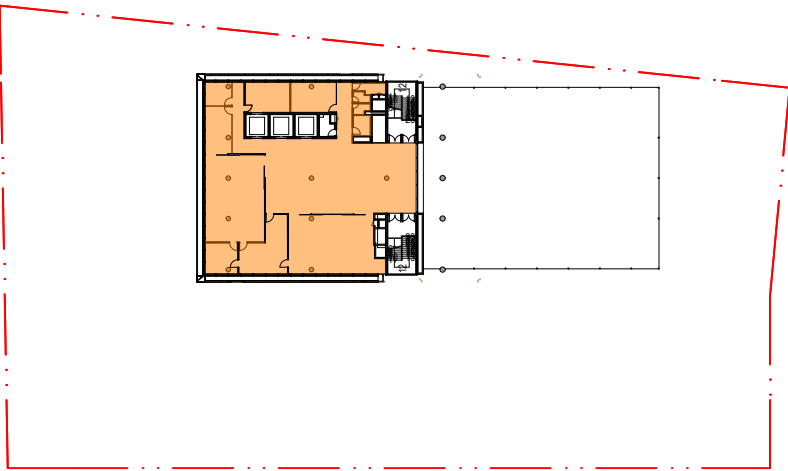
Level 2



Level 3






Level 4



Level 5



Level 6

 GFA Proposed New Build  GFA Existing Buildings  GFA Outdoor Terraces



fjmt studio architecture interiors landscape urban community
sydney melbourne uk
Level 5, 70 King Street t +61 2 9251 7077 w fjmtstudio.com

project
Inner Sydney High School
244 Cleveland Street
Surry Hills, Sydney NSW 2010

C	29/9/17	SSD Application	KT	EC
B	9/6/17	SSD Application	KT	EC

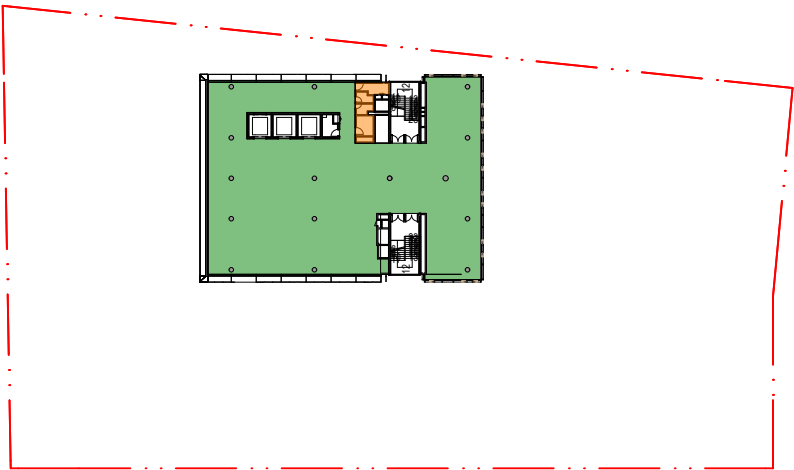
rev	date	name	by	chk
-----	------	------	----	-----

title
GFA Plans
GFA Plans - Sheet 1

scale 1:1000 @ A3	code ISHS	sheet no. 2802	rev
----------------------	---------------------	--------------------------	-----



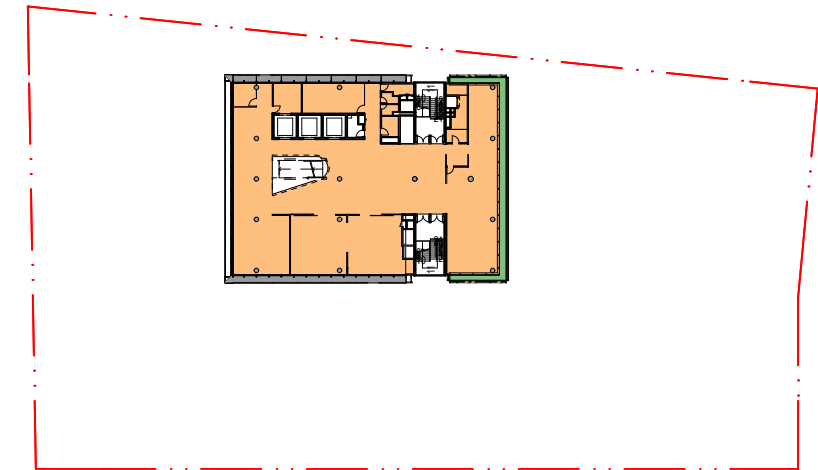
Level 7



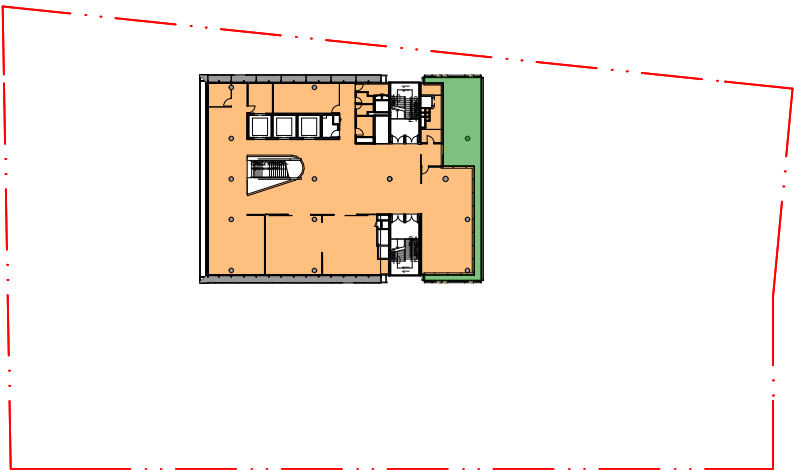
Level 8



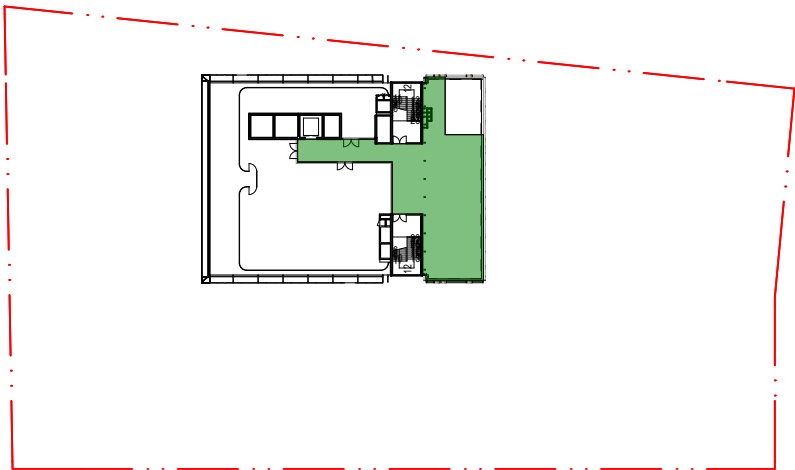
Level 9 Terrace



Level 10



Level 11



Level 12 Roof Terrace

 GFA Proposed New Build  GFA Existing Buildings  GFA Outdoor Terraces



FT01	'Verandah'
FT02	Stairwell
FT03	Glazed Facade
FT04	'Cloud' Facade
FT04a	'Cloud' Facade (Air Gap)
FT05	'Verandah' Rooftop
FT06	Studio
FT07	Studio (North and South)
FT08	Podium
FT09	Window wall
BS7	Balustrade - Tensile Web
BLK1	Block Work Rendered
FC	Fibre Cement

1	Design Development of Podium Form and the relationship of ground plane and park
2	Relocation of 1 story from the Studio to the Tower resulting in a height reduction of the Studio volume of approximately 3 metres.
3	Reduction in height of the roof top Games Court Fence.
4	Revised floor to floor heights following development of services spatial coordination.
5	Revised overall height to conceal rooftop plant and maintain a modulated silhouette of the tower forms.
6	Reverted to a Terracotta Facade System

fjmt studio architecture interiors landscape urban community
sydney melbourne uk
Level 5, 70 King Street t +61 2 9251 7077 w fjmtstudio.com

scale	1:200 @ A1	first issued	9/6/2017
project code	sheet no.	revision	
ISHS	3001	D	

