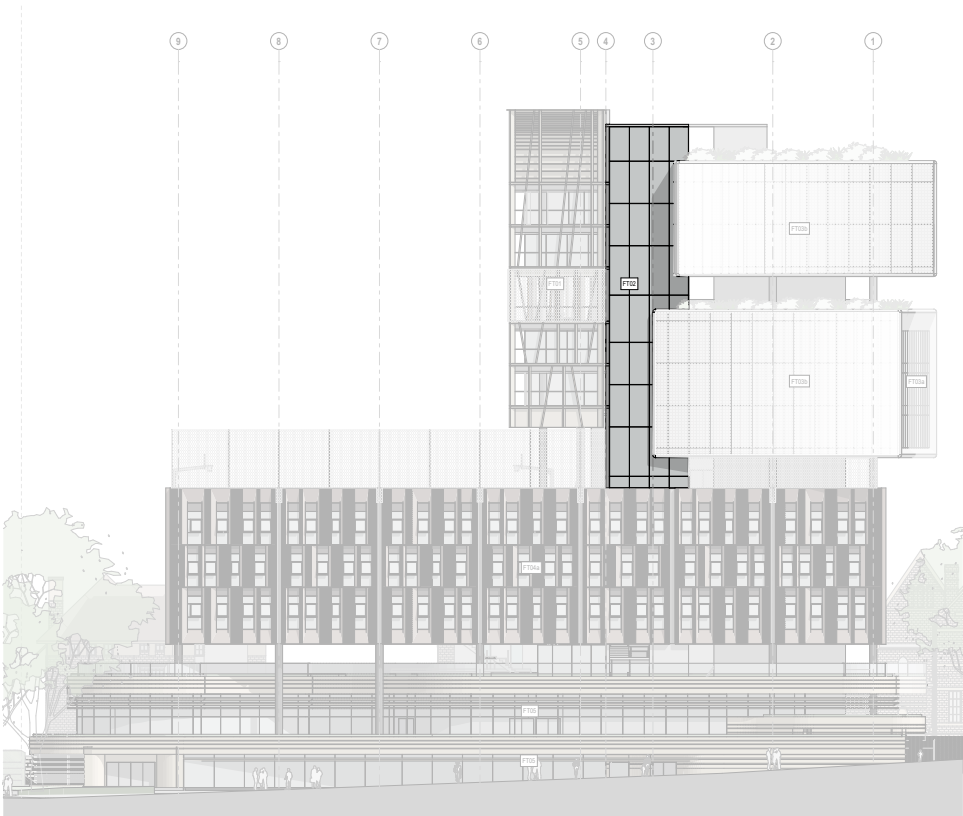


**FT02 - Stairwell Facade**

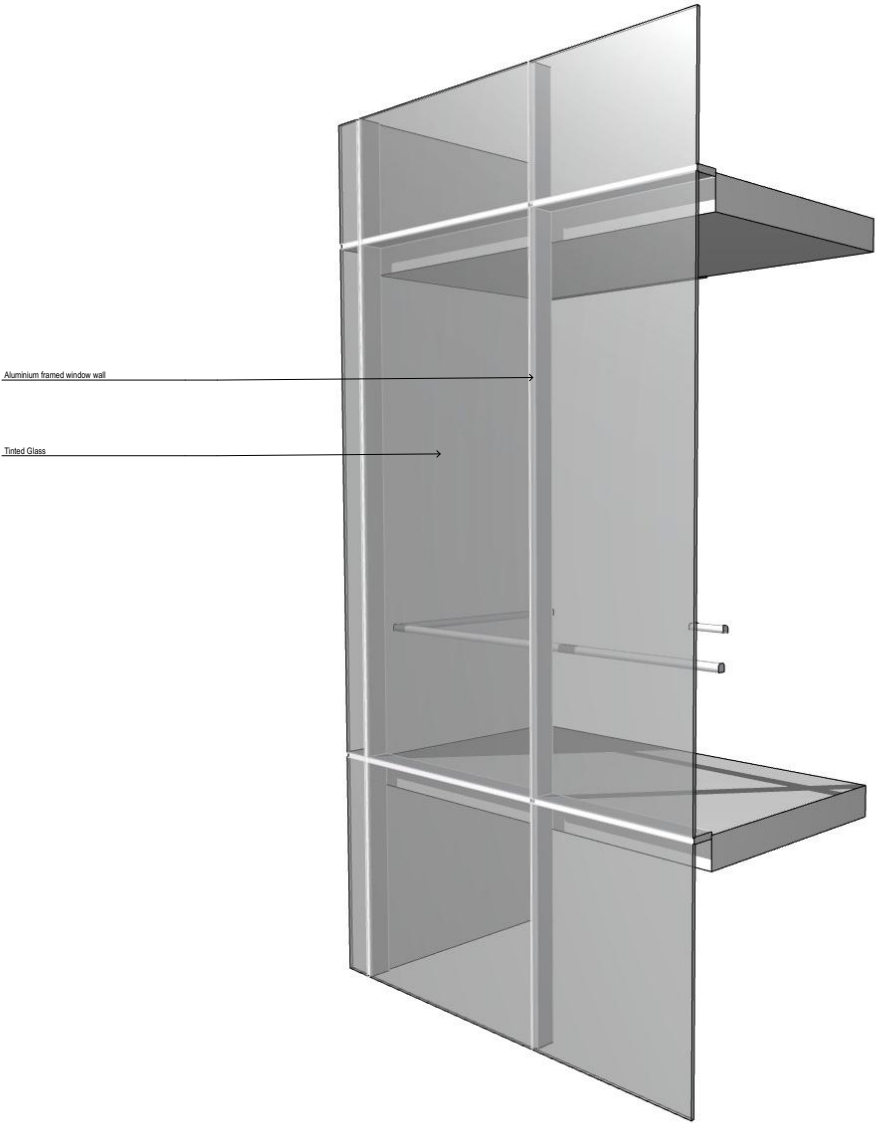
The stair well facade consists of a floor by floor aluminium framed window wall system including an aluminium slab edge cover plate with a nominal module of 1.75m wide. A steel handrail is incorporated into the mullion system. Tinted performance glazing will create a shadow joint to the adjacent facades.



**West Elevation**



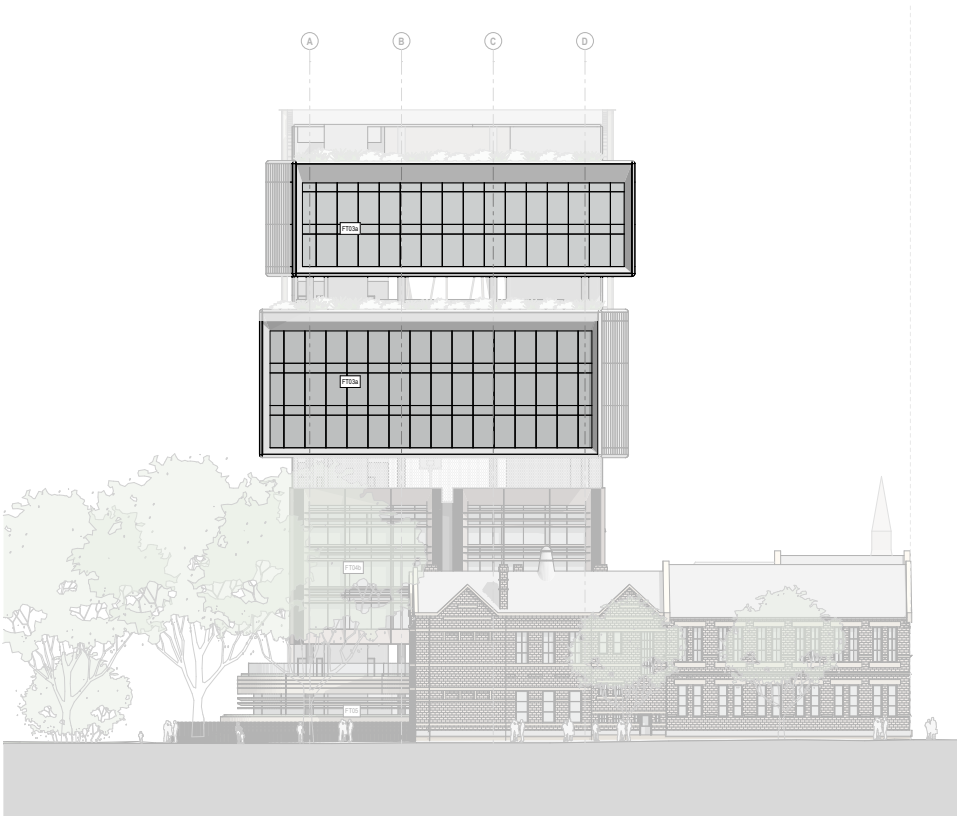
**East Elevation**





**FT03a - Twisting Box Glazed Facade**

This facade is located to the south of the Learning Hubs. Due to the decreased need for high thermal performance, large floor to ceiling glazing provides views across the suburbs. The system is an aluminium framed window wall system with an internal glazed sliding system including integrated toe panel slab edge cover and skirting. Each twisted box is framed with angled and curved aluminium panels.



**South Elevation**

