

Proposed Overshadowing Study 21 December



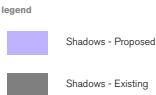
June 21st 9am



June 21st 10am



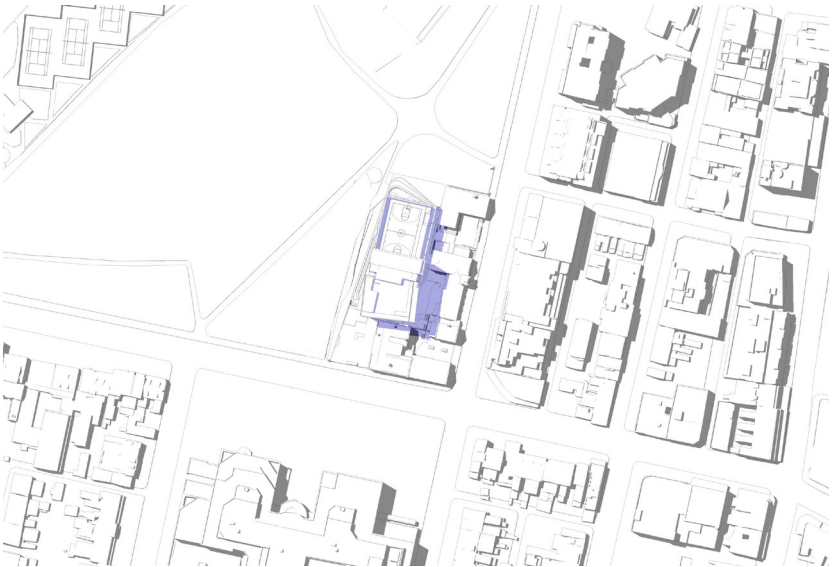
June 21st 11am



June 21st 12pm



June 21st 1pm



June 21st 2pm



June 21st 3pm



June 21st 4pm

Key View Points

The proposal should include a visual impact assessment from key view points within the adjoining public open space

Prince Alfred Park

A number of views have been reviewed from major pathway junctions in Prince Alfred Park.

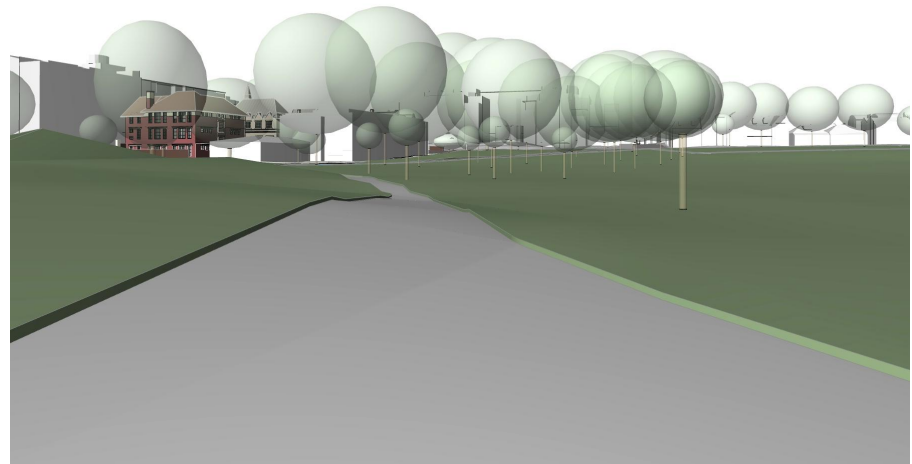
The topography of the park gently slopes up towards the new campus, which enables the dynamic forms to create a visual point of interest at the end of the vista.

The scale of the tower form sits against a foreground of the substantial avenue of trees to the south of the park

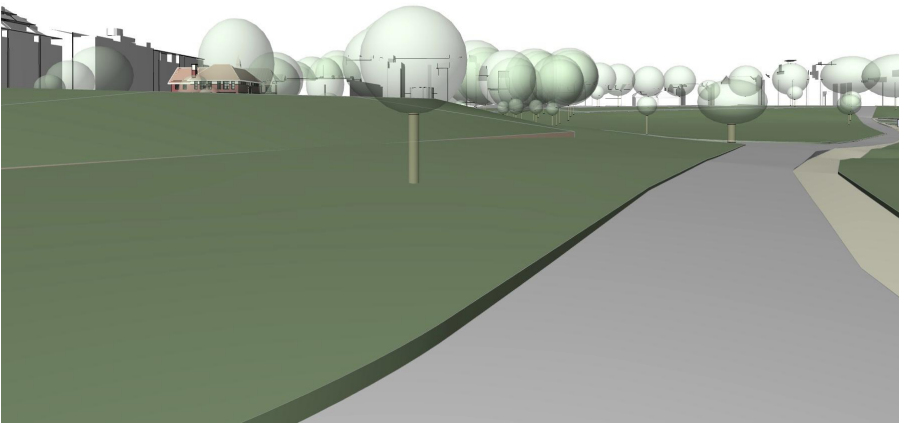


Key Plan (NTS)

Existing

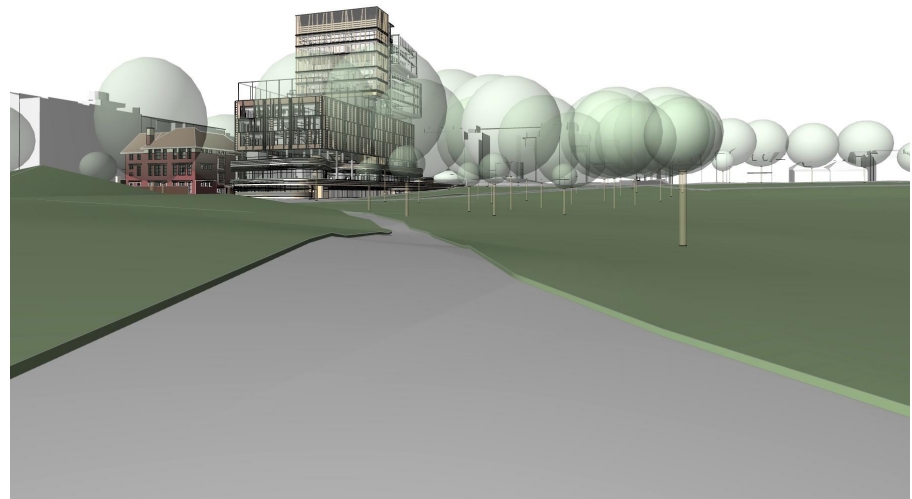


V1

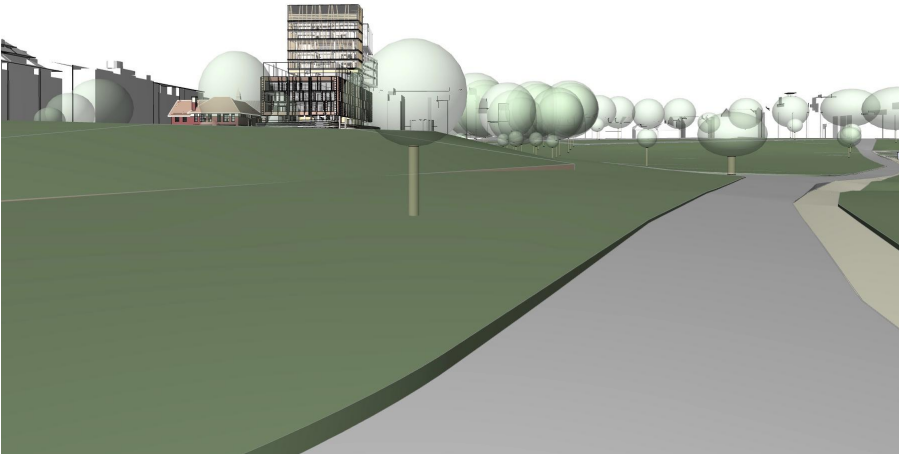


V2

Proposed



V1



V2



Key View Points

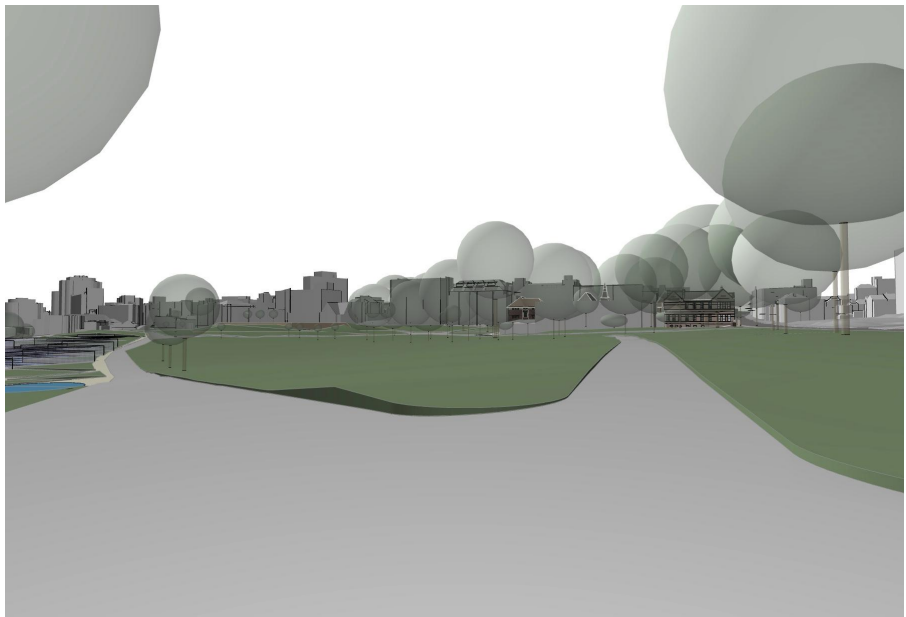
Prince Alfred Park

The impact of the new campus forms as viewed from the south/west corner of the park, a major accessway from Cleveland Street, is appropriately scaled in relation to the large fig trees and the scale of the warehouse buildings along Chalmers Street.



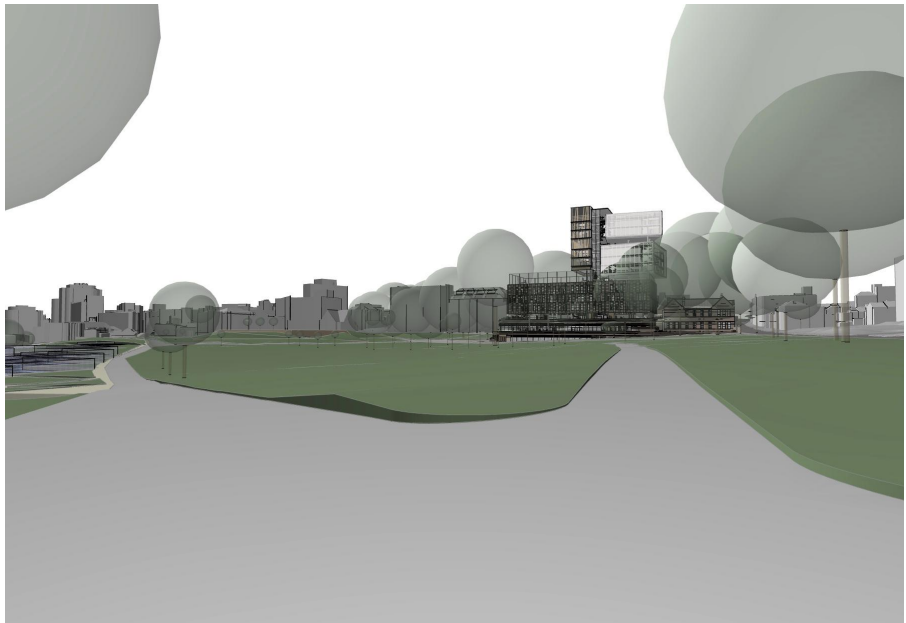
Key Plan (NTS)

Existing



V3

Proposed



V3