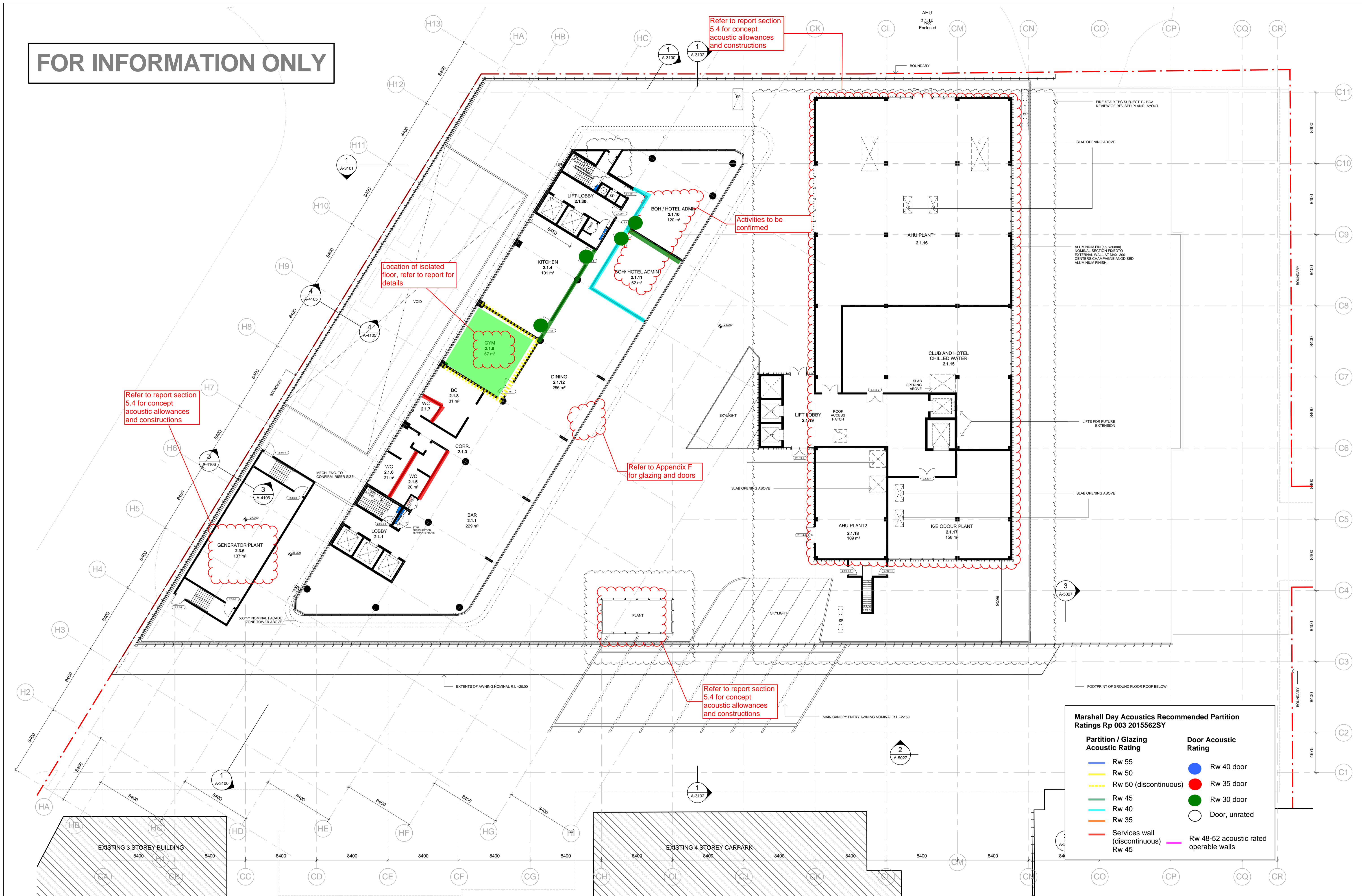


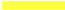











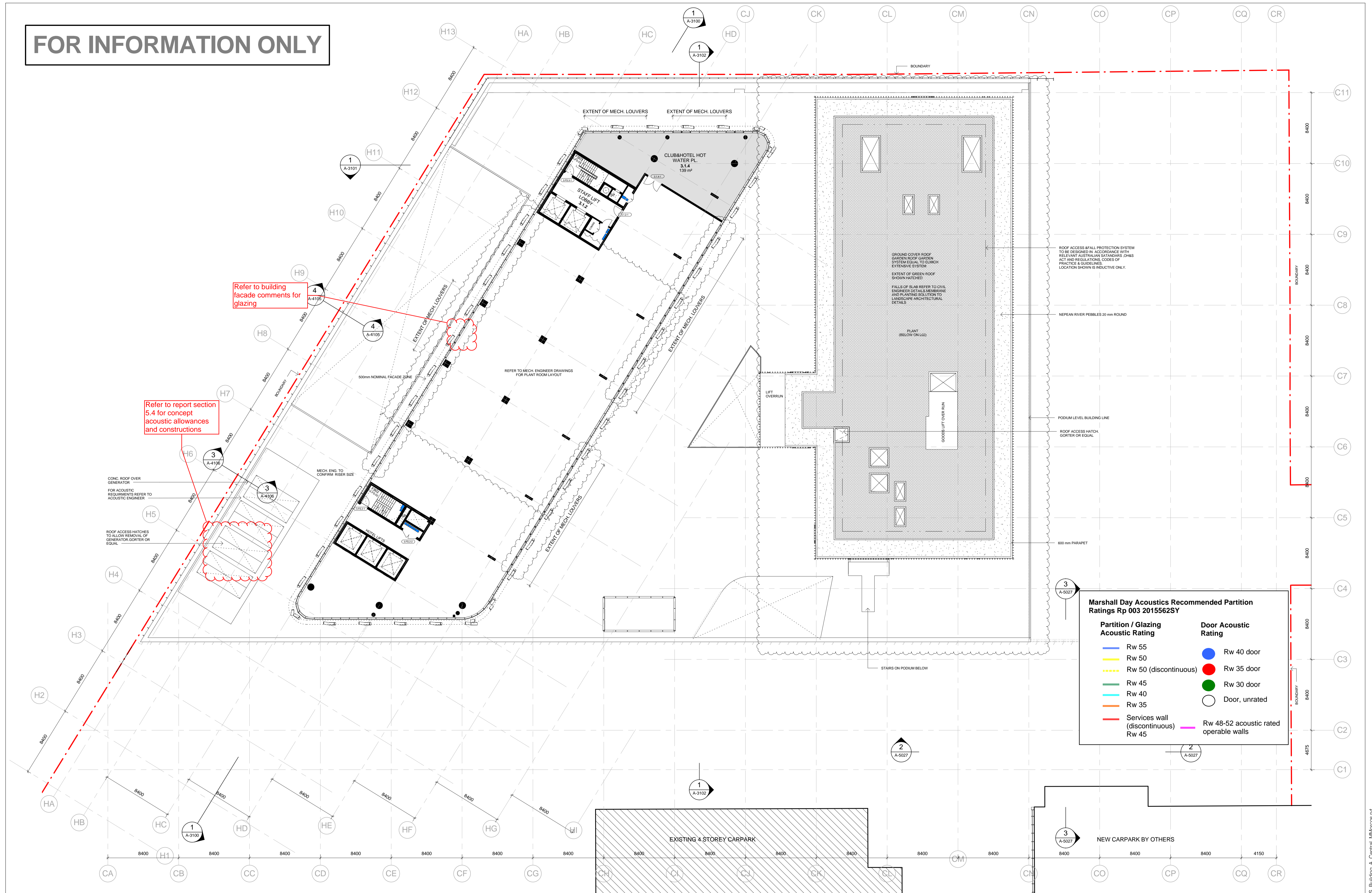
FOR INFORMATION ONLY

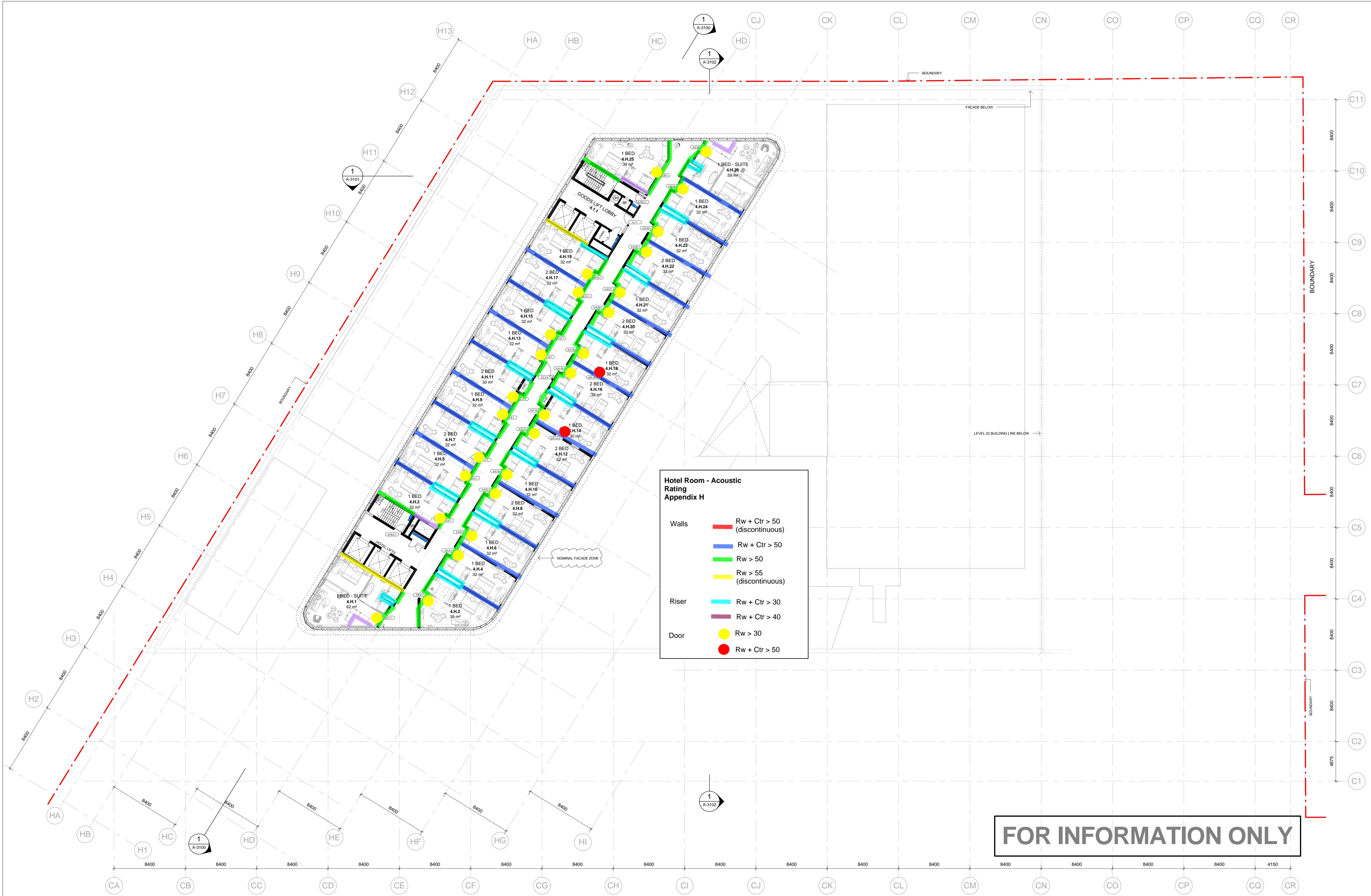


Marshall Day Acoustics Recommended Partition Ratings Rp 003 2015562SY	
Partition / Glazing Acoustic Rating	Door Acoustic Rating
 Rw 55	 Rw 40 door
 Rw 50	 Rw 35 door
 Rw 50 (discontinuous)	 Rw 30 door
 Rw 45	 Door, unrated
 Rw 40	
 Rw 35	
 Services wall (discontinuous)	 Rw 48-52 acoustic rated operable walls
Rw 45	

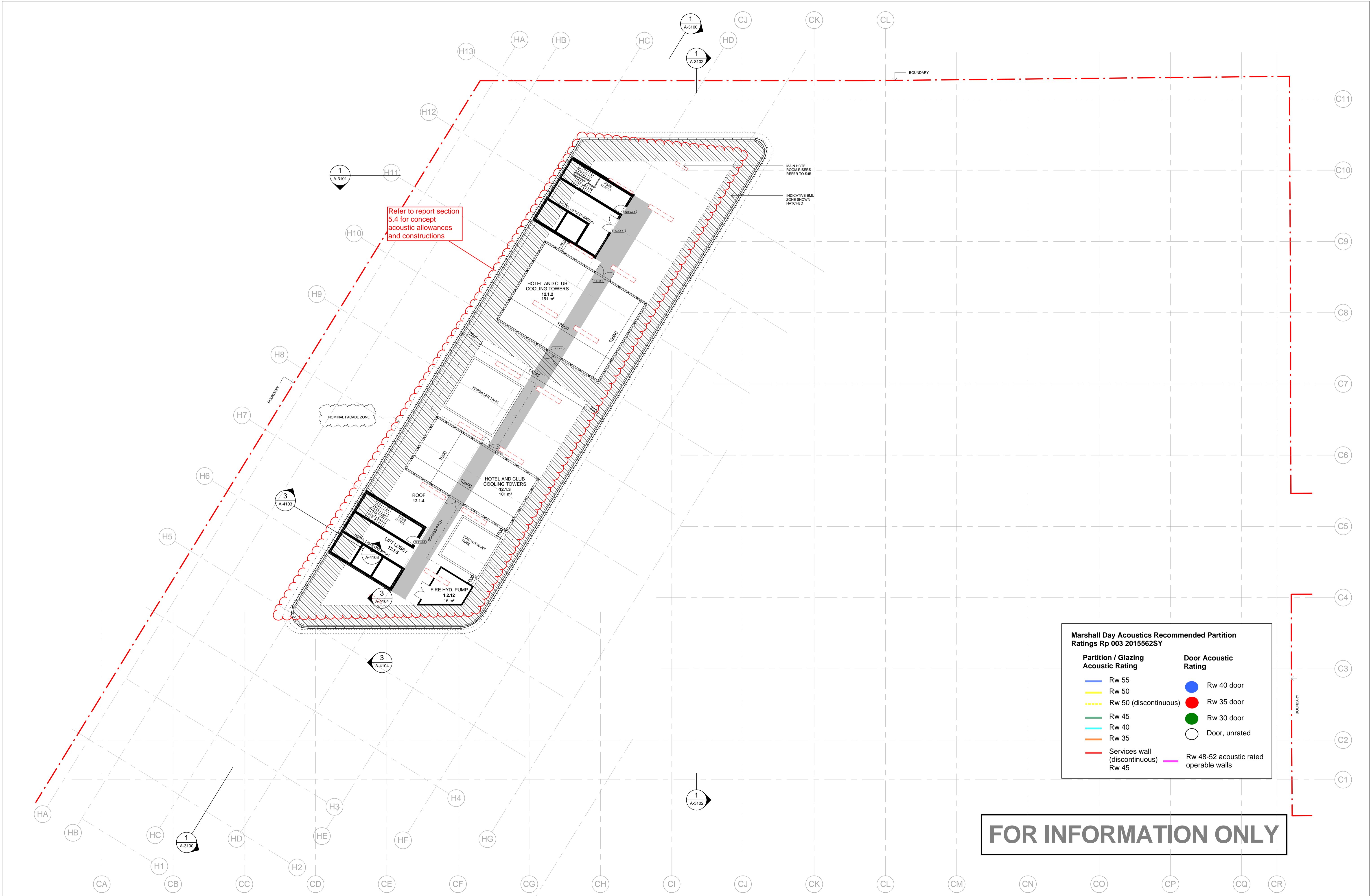
[illegible]


FOR INFORMATION ONLY

[illegible]



<div>Do not scale from drawings.</div> <div>Verify all dimensions on site before commencing work.</div> <div>Copying or reproduction of this drawing is strictly prohibited without the consent of Pwllar & Widdell Pty Ltd.</div> <div>The Architect shall not be liable for any loss or claims whatsoever arising from or in respect of any errors, omissions or misstatements in this drawing or any data derived from the computer system of the Architect to systems of the Client or other Consultants.</div> <div>The recipient of the data shall be responsible for checking accuracy and completeness of data received.</div> <div>Any use of the electronic data in part or whole shall be at the user's risk.</div> <div>The CAD files and their contents are solely representations of the project information and cannot be relied upon beyond the representation shown on PDF versions of the drawings as provided by the Architect.</div>	No:	Amendment		By:	Date:	<div>Key Plan:</div> <div></div>	<div>Consultants:</div> <div></div>	<div>Client:</div> <div></div>	<div>PTW Architects</div> <div>Level 13, 9 Castlereagh St</div> <div>Sydney NSW Australia 2000</div> <div></div> <div>NSW Nominated Architects:</div> <div>A Anderson & Associates No. 2822</div> <div>J Bilton Architects No. 3916</div> <div>D Jones Architects No. 4778</div> <div>A Rossi Architects No. 5057</div> <div></div> <div>T + 612 9232 5877</div> <div>F +612 9221 4139</div> <div></div> <div>PTW</div> <div></div> <div>Axilarchitects</div>	Approvals	By:	Date:	<div>Project:</div> <div>DOOLEYS LIDCOMBE</div> <div>CATHOLIC CLUB</div> <div></div> <div>JOHN STREET, LIDCOMBE, NSW 2141</div> <div></div> <div>Hotel - TYPICAL LEVEL 4 - 11</div> <div></div> <div>Status:</div> <div>SCHEME DESIGN</div>	0	1	2	5	10	15m
	G	ISSUED FOR INFORMATION			08/04/16					Scale:	1 : 200	@A1		Plot Date:	12/04/2016 9:36:57 AM	Job No:	214019		
	F	INTERIM ISSUE			04/03/16					<div>Dwg No:</div> <div>A-1014</div>	<div>Revision:</div> <div>G</div>								
	E	ISSUED FOR COORDINATION			26/02/16														
	D	ISSUED FOR COORDINATION			19/02/16														
	C	ISSUED FOR COORDINATION			12/02/16														
	B	ISSUED FOR COORDINATION			08/02/16														
	A	CONCEPT ISSUE			22/12/15														



<div>Do not scale from drawings.</div> <div>Verify all dimensions on site before commencing work.</div> <div>Copying or reproduction of this drawing is prohibited without the consent of Peadar Thery & Trillier P/L.</div> <div>The Architect shall not be liable for any loss or claims whatsoever arising from or in respect of any errors existing or resulting from data however transferred from the computer system of the Architect to systems of the Client or other Consultants.</div> <div>The recipient of the data shall be responsible for checking accuracy and completeness of data received.</div> <div>Any use of the electronic data in part or whole shall be at the user's risk.</div> <div>The CAD files and their contents are solely representations of the project information and cannot be relied upon beyond the representation shown on PDF versions of the drawings as provided by the Architect.</div>	No:	Amendment		By	Date	<div>Key Plan:</div> <div></div>	<div>Consultants:</div>	<div>Client:</div>	<div><div>PTW Architects</div><div>Level 13, 9 Castlereagh St</div><div>Sydney NSW Australia 2000</div></div> <div><div>NSW Nominated Architects:</div><div>A Andersons AD Architects No. 2822</div><div>J Birrell Architects No. 3916</div><div>D Jones Architects No. 4718</div><div>A Ross Architects No. 2027</div></div> <div><div>PTW</div><div>T + 612 9232 5877</div><div>F + 612 9221 4139</div></div> <div><div>Axilarchitects</div></div>	Approvals	By:	Date:	Project:	<div>0</div> <div>1</div> <div>2</div> <div>5</div> <div>10</div> <div>15m</div>
	H	ISSUED FOR INFORMATION			08/04/16					<div>DOOLEYS LIDCOMBE</div> <div>CATHOLIC CLUB</div> <div>JOHN STREET, LIDCOMBE, NSW 2141</div> <div>Title:</div> <div>HOTEL - LEVEL 12 - ROOF</div> <div>PLAN</div>	<div>Scale:</div> <div>1 : 200 @A1</div> <div>Plot Date:</div> <div>11/04/2016 5:44:18 PM</div> <div>Job No:</div> <div>214019</div> <div>Dwg No:</div> <div>A-1016</div> <div>Revision:</div> <div>H</div> <div>Status:</div> <div>SCHEME DESIGN</div>			
	G	INTERIM ISSUE			04/03/16									
	F	ISSUED FOR COORDINATION			26/02/16									
	E	ISSUED FOR COORDINATION			19/02/16									
	D	ISSUED FOR COORDINATION			12/02/16									
	C	ISSUED FOR COORDINATION			08/02/16									
	B	CONCEPT ISSUE			28/01/16									
	A	CONCEPT ISSUE			22/12/15									