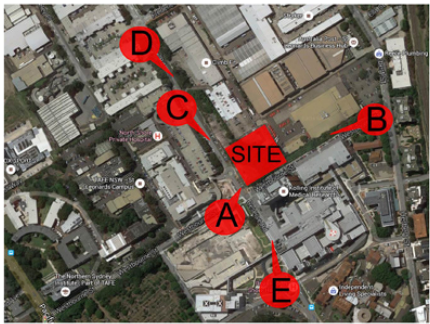




VIEW D, From Intersection Of Reserve Rd & Frederick St




LOCATION OF VIEW POINTS



CURRENT VIEW D

3	ISSUE FOR DA	06.03.17	EH
2	ISSUE FOR DA	28.02.17	EH
1	ISSUE FOR DA SUBMISSION	06.05.16	CX
Rev	Revision description	Date	By

Project	
PRIVATE HOSPITAL ST LEONARDS	
Principal	
DEXUS PROPERTY GROUP	

USE FIGURED DIMENSIONS ONLY. DO NOT SCALE. ALL DIMENSIONS SHALL BE VERIFIED ON SITE AND DISCREPANCIES IMMEDIATELY BROUGHT TO THE ATTENTION OF THE PROJECT MANAGER FOR RESOLUTION	"CLOUDS" & REVISIONS ARE INTENDED AS GUIDES AND DO NOT NECESSARILY DESCRIBE THE FULL EXTENT OF REVISIONS. ASCERTAIN FULL EXTENT BY COMPARISON WITH PREVIOUS VERSION.	<div>QA</div> CHECK	<div>Subject</div> <div>By</div> <div>Date</div>	<div>Subject</div> <div>By</div> <div>Date</div>	<div>Subject</div> <div>By</div> <div>Date</div>	TRUE NORTH	<div>Drawn</div> <div>HMC</div>	<div>Checked</div> <div>CX</div>	<div>Date</div> <div>5.5.2016</div>	<div>Scale</div> <div>N.T.S</div>	<div><div>HEALTH PROJECTS INTERNATIONAL Architects and Health Facility Planners ACN 068 856 585 Ground Floor, Suite 1, 88 Alfred Street Milsons Point, NSW 2061 Ph: (02) 9450 4100 Fax: (02) 9450 4298</div></div>	<div>Dwg No.</div> <div>A-REN-4</div>	<div>Issue</div> <div>3</div>
			<div>RDS</div>	<div>STRUCT</div>	<div>PROJ. ARCH</div>		<div>Drawing Title</div> <div>STREETSCAPE RENDERING VIEW D</div>						
			<div>ARCH</div>	<div>SPEC. CONS</div>									
			<div>AUT</div>	<div>SERV</div>									