

WGE environmental analysis

—

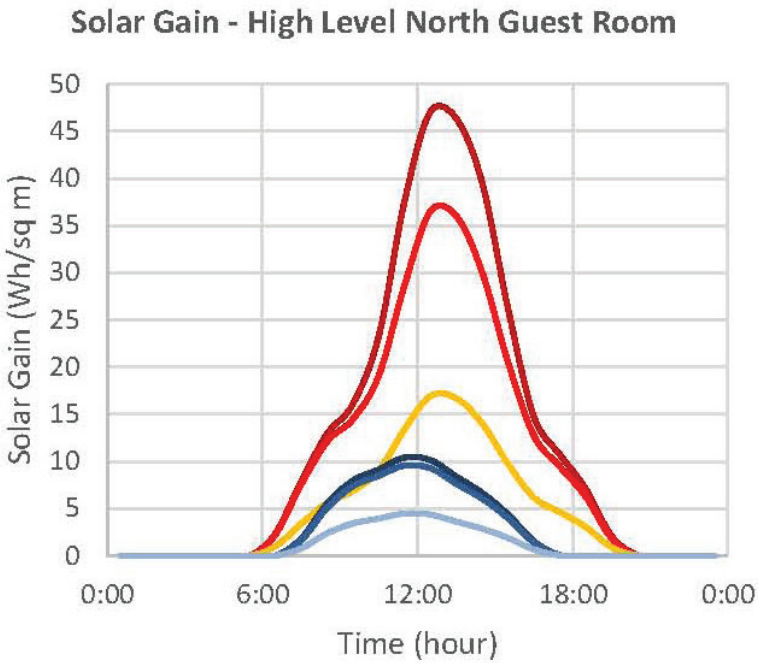
Levels 6 - 9 north

- Solid facade element
- No direct sunlight
- Morning sun
- Midday sun
- Afternoon sun



Summer

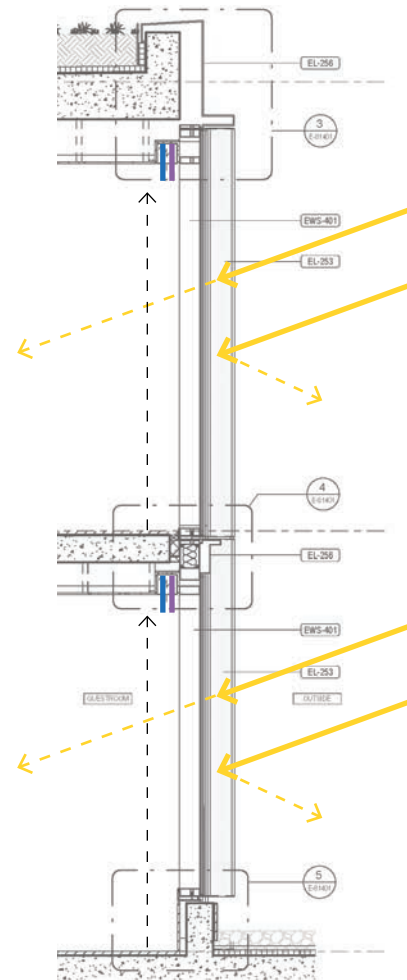
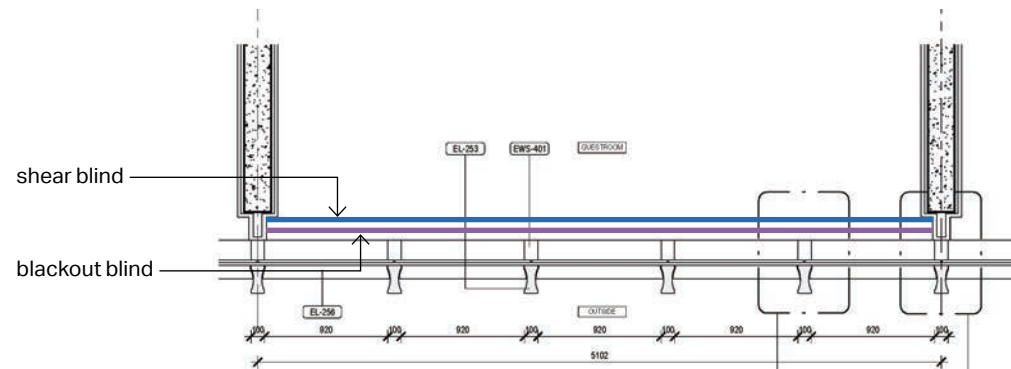
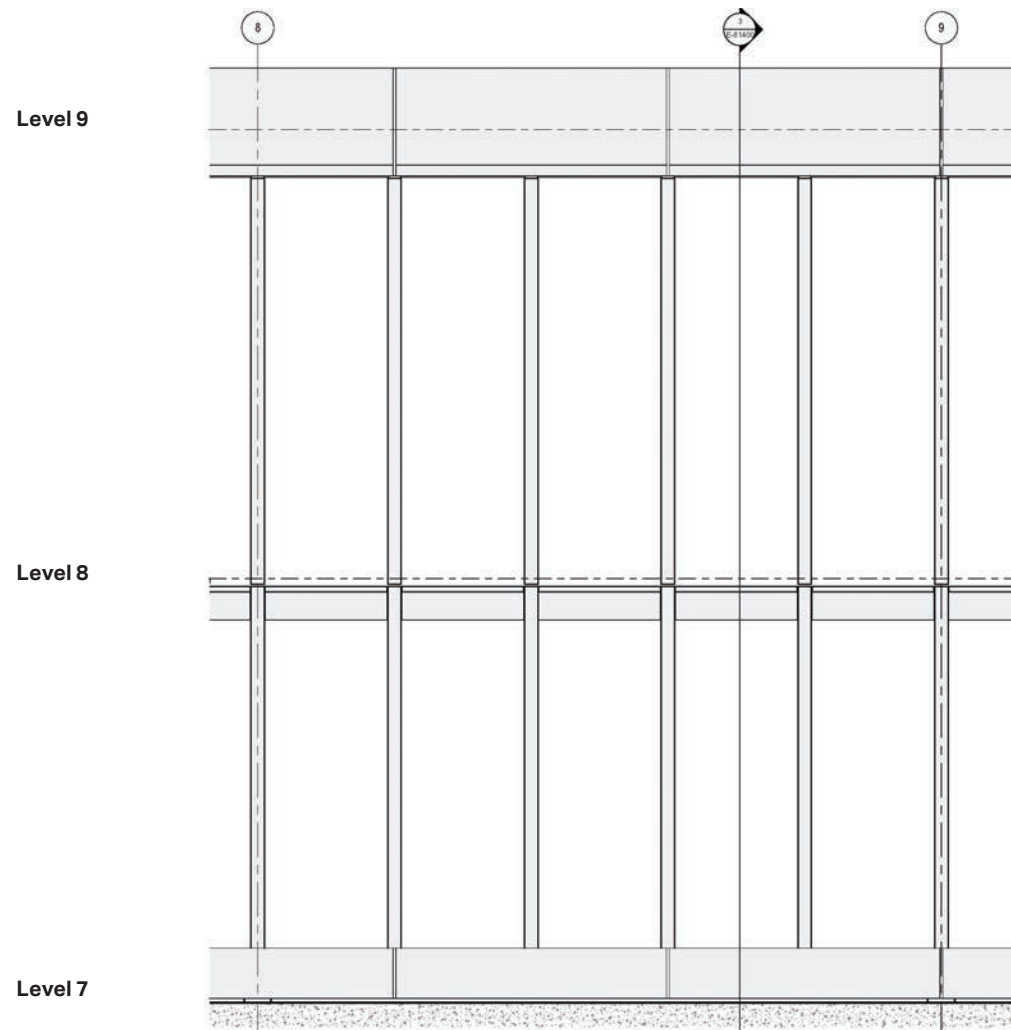
Winter





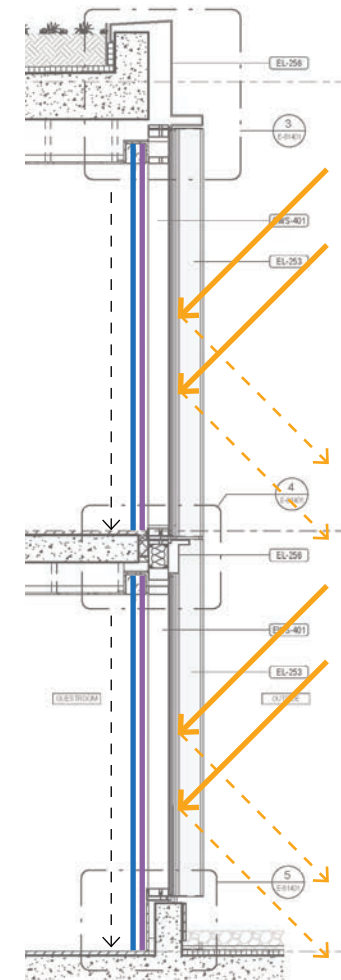
- Summer: scenario 1 - min code compliant glazing (U=4.3, SHGC=0.70)
- Summer: scenario 2 - previous glazing (U=3.7, SHGC=0.65)
- Summer: scenario 3 - proposed glazing (U=3.1, SHGC=0.33)
- Winter: scenario 1 - min code compliant glazing (U=4.3, SHGC=0.70)
- Winter: scenario 2 - previous glazing (U=3.7, SHGC=0.65)
- Winter: scenario 3 - proposed glazing (U=3.1, SHGC=0.33)




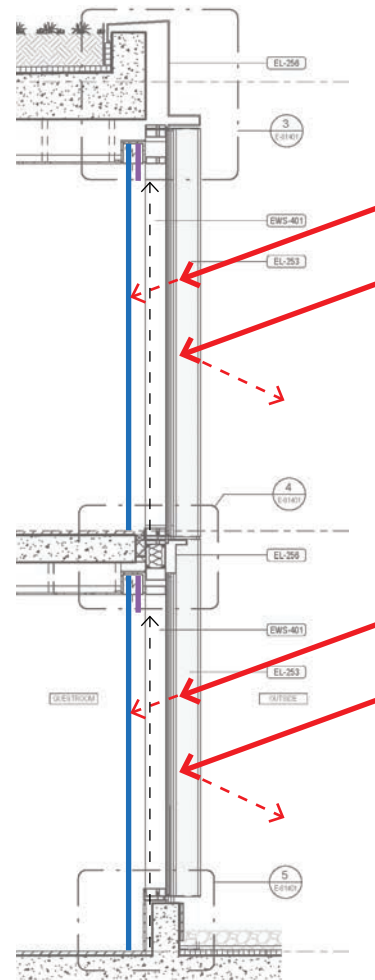
Window Treatment levels 7 & 8



 Sunrise - mid morning
85% → 10% occupancy

 Mid morning - afternoon
10% occupancy

Blinds close
automatically when
guests leave room

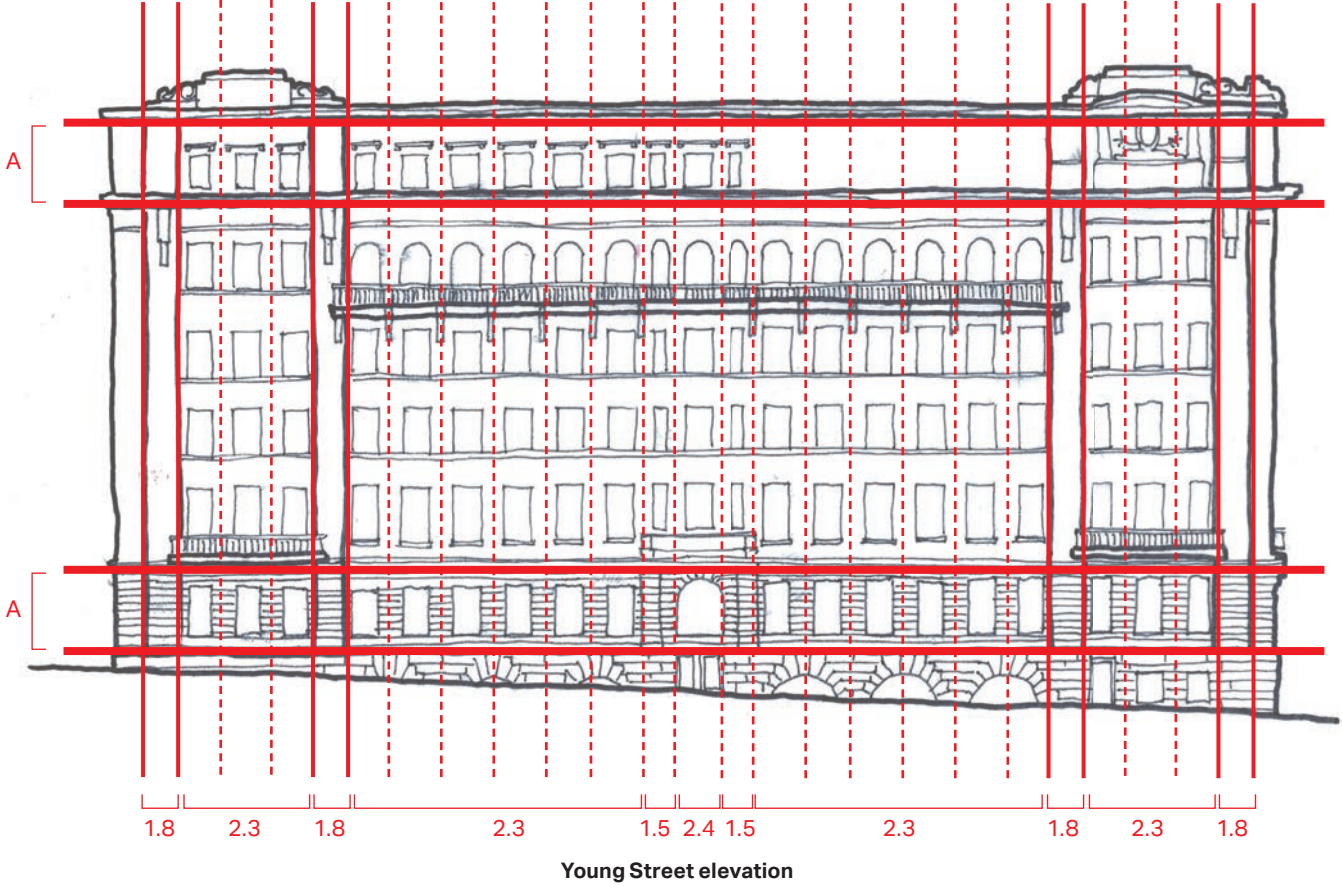
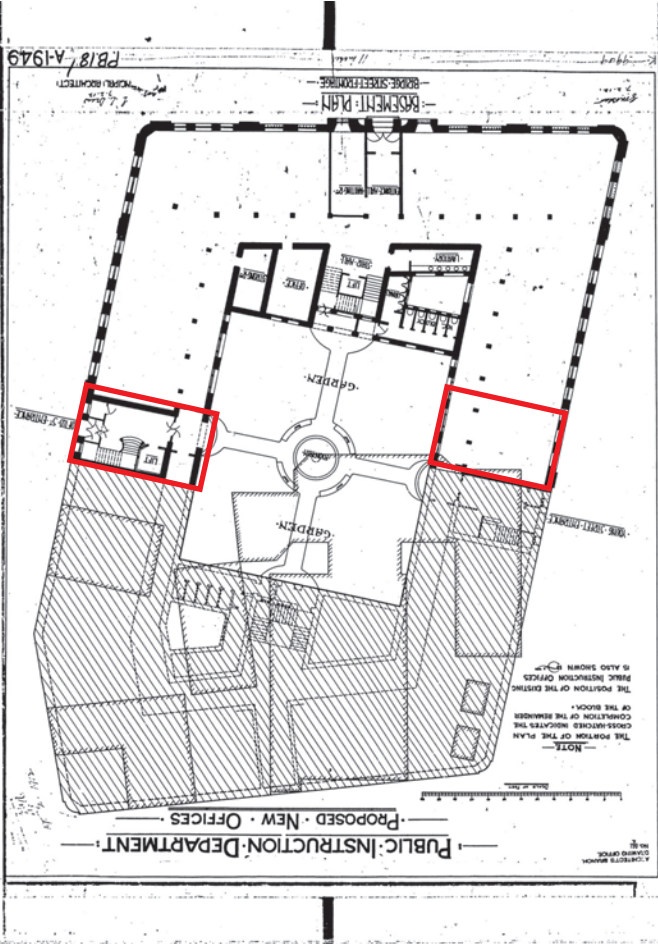


Afternoon - Sunset
10% → 70% occupancy

Afternoon - Sunset
• 10% → 70% occupancy

Education Building

Existing rhythm

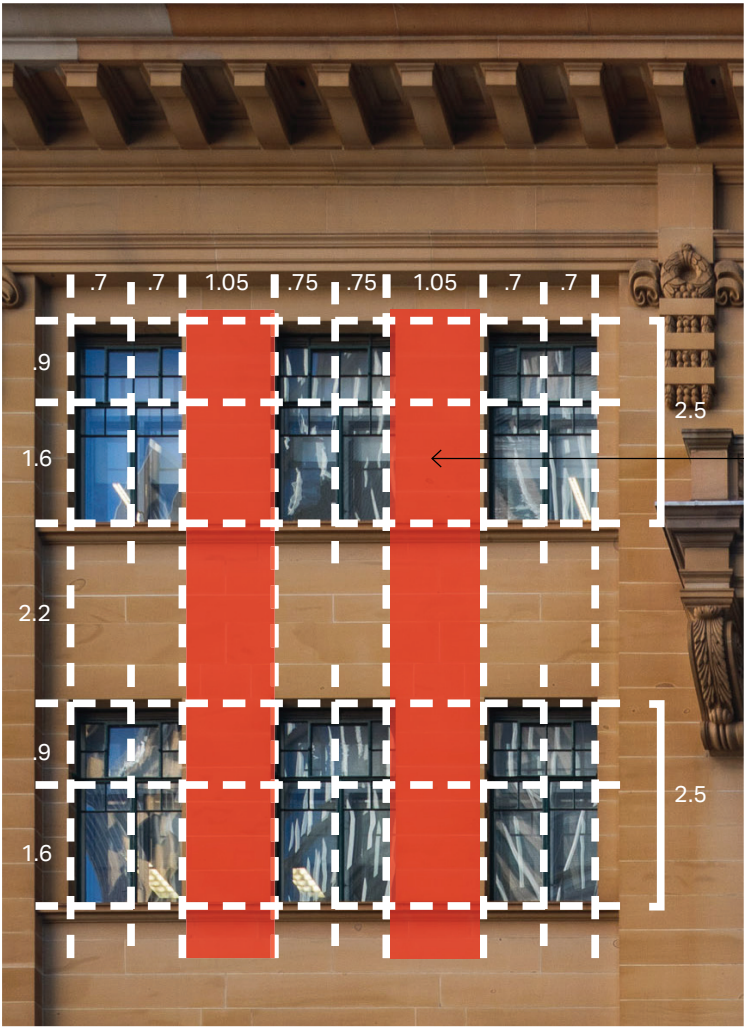


Education Building



Existing rhythm

A thorough analysis of the existing facade rhythm has been undertaken to inform the proportions of the new facade. Although the building reads as predominantly vertical, with its portrait fenestration, the overall mass is broken down in scale with a number of horizontal datums; the rusticated base at lower ground level, a series of cornice lines and projecting balconies further up the facade.



Width of the solid modules form the inverse of the new glazing modules above



Farrer Place elevation



FIND
BIG FUN
FOR
LITTLE
discos
www.whatson.sydney.gov.au

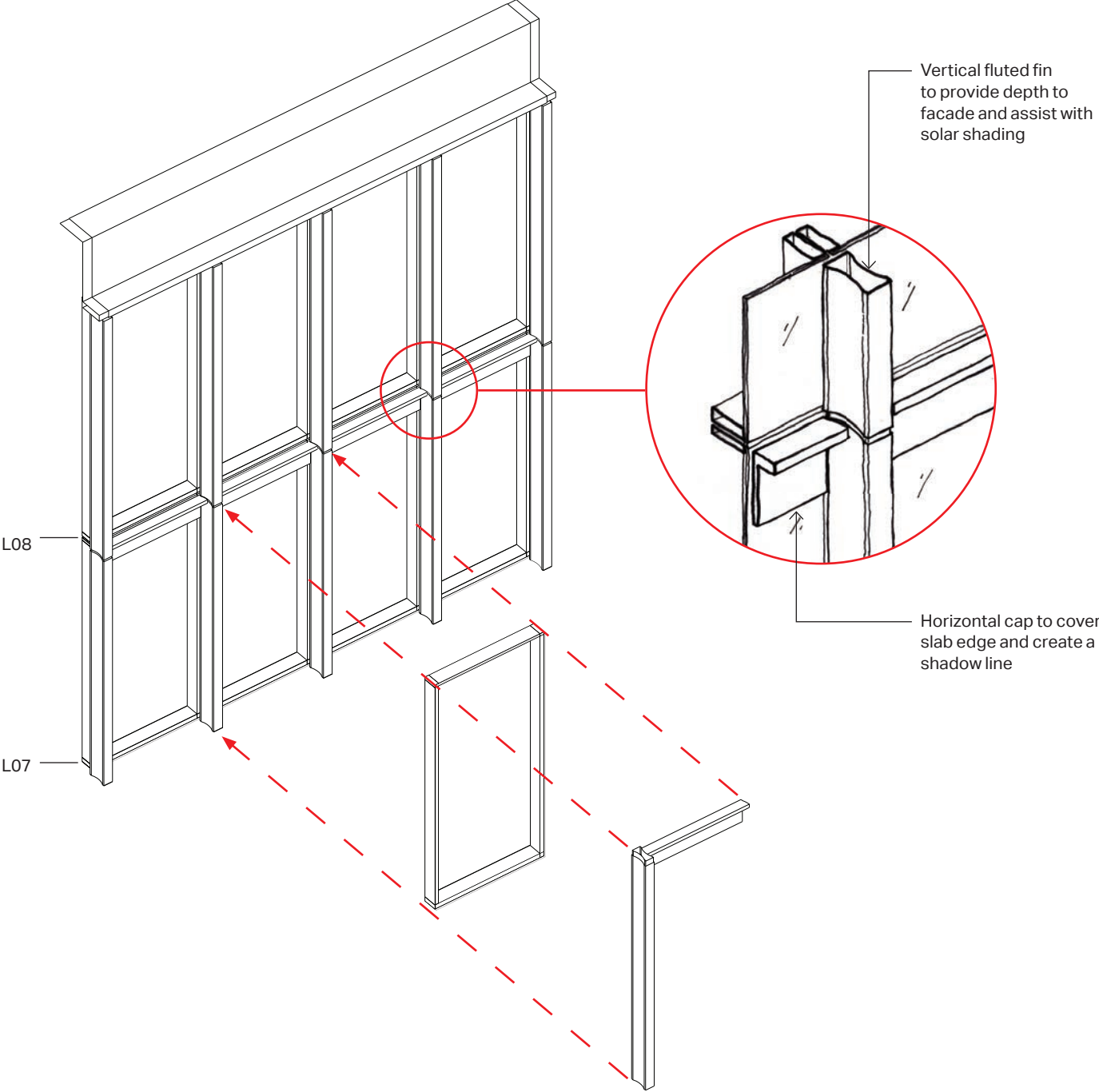


FIND
BIG FUN
FOR
LITTLE
discos
www.whatson.sydney.gov.au

Levels 7 & 8

The colonnade

The new facade has a tight grain which wraps across levels 07-08 on the south and 06-09 on the north. The grain of the facade, with its elegant fluted vertical fins aid with solar protection for the morning and afternoon sun. In addition it creates a depth to the facade and assists with providing a degree of privacy for the hotel guests, shielding oblique views.



Note: The views are illustrative - the final materiality and colour selection will be determined via on site tests.



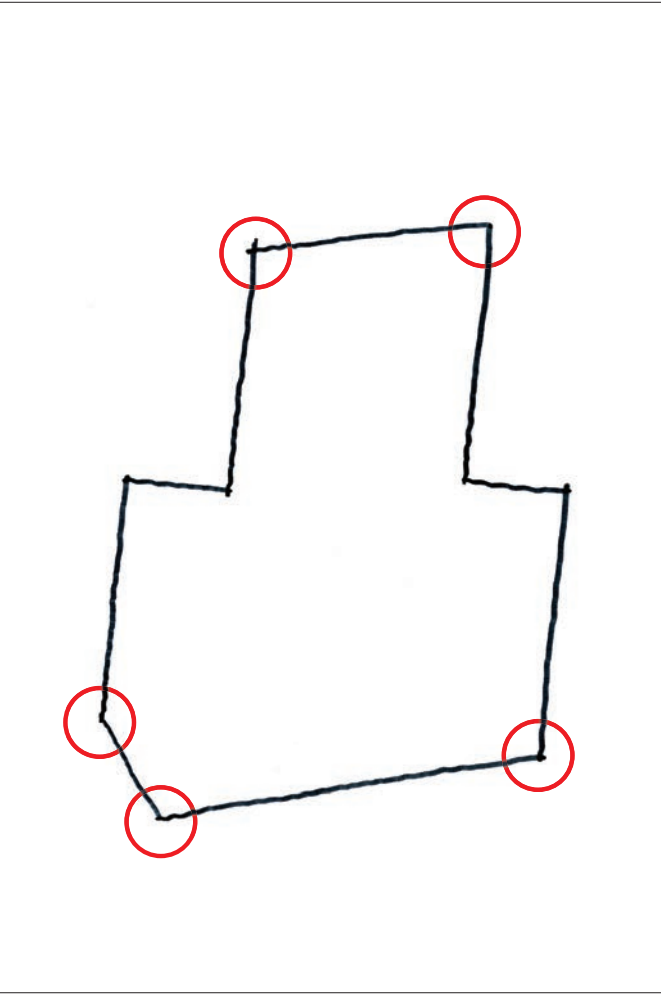
Levels 7 & 8

The colonnade

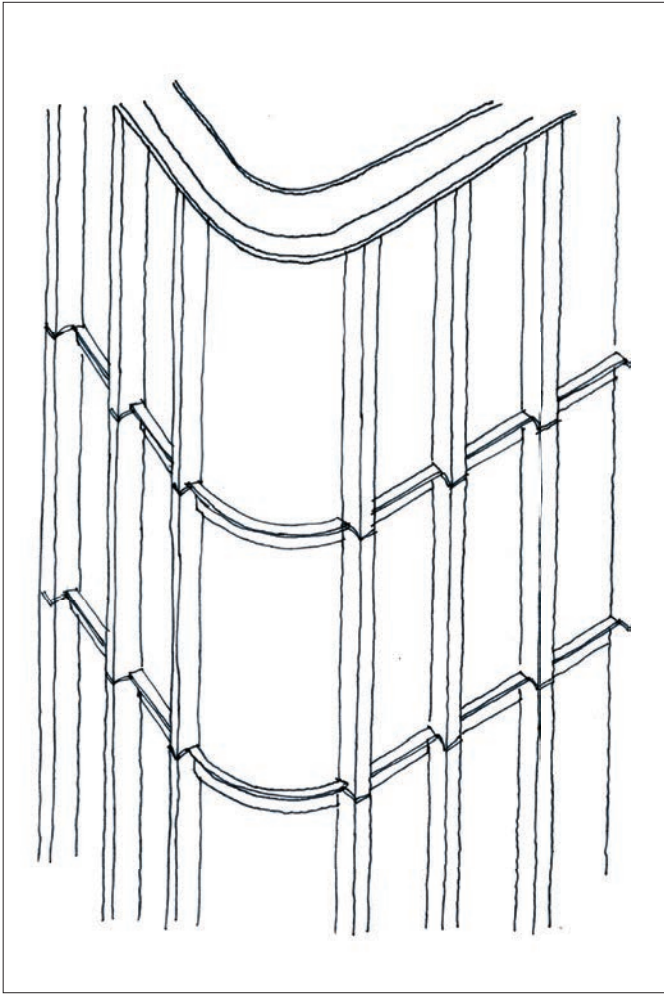
The five corners of the facade are curved to visually soften the edges of the new architecture. The curve references the filleted edges of the existing sandstone building below.



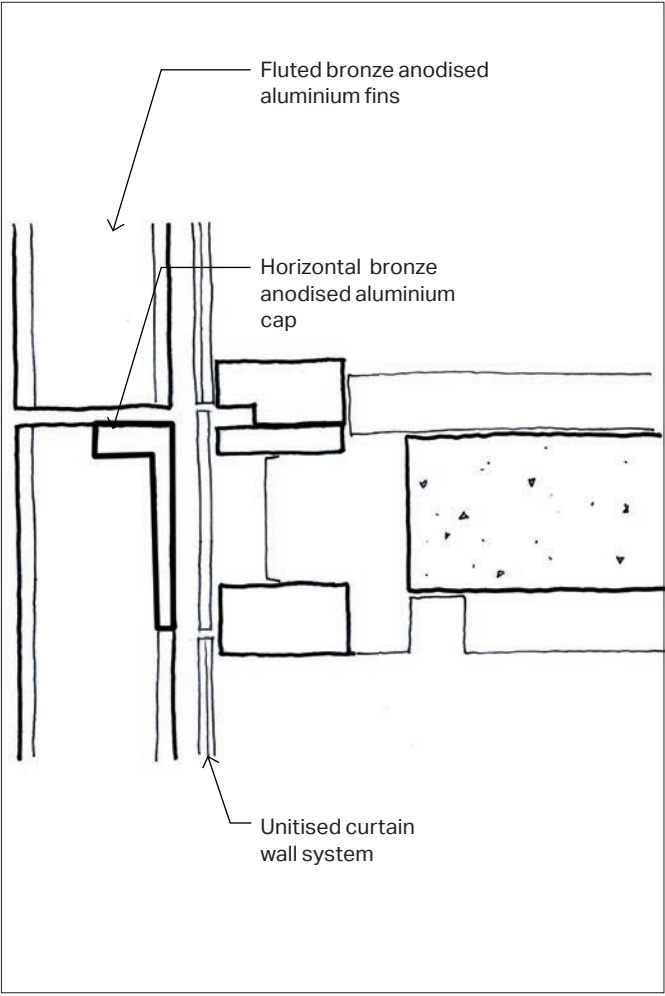
South-west elevated corner view



Curved glass on the corners



Corner axo



Section detail



Note: The views are illustrative - the final materiality and colour selection will be determined via on site tests.