

## Consultation

## Government Consultation Log

Contact Details	Date	Method	Comment / Outcome
Sydney Water	18.1.2016	Email	Email to Sydney Water requesting a meeting to give an overview of the Project and to discuss key issues
RFS	18.1.2016	Email	Email to RFS requesting a meeting to give an overview of the Project and to discuss key issues
OEH	18.1.2016	Email	Email to OEH requesting a meeting to give an overview of the Project and to discuss key issues
Fairfield City Council	18.1.2016	Email	Email to Fairfield City Council requesting a meeting to give an overview of the Project and to discuss key issues
EPA	18.1.2016	Email	Email to EPA requesting a meeting to give an overview of the Project and to discuss key issues
DPI - Water	18.1.2016	Email	Email to DPI - Water requesting a meeting to give an overview of the Project and to discuss key issues
RMS	18.1.2016	Email	Email to RMS requesting a meeting to give an overview of the Project and to discuss key issues
DPE	20.1.2016	Email	Email to DPE requesting a meeting to give an overview of the Project and to discuss key issues
DPE	20.1.2016	Phone	Discussion with DPE regarding the Projects consultation methodology with local business and also with government agencies
RFS	1.2.2016	Email	Email from RFS regarding a meeting to discuss the Project. RFS advised there were issues to consider as part of the EIS
RMS	1.2.2016	Email	Email from RMS officer regarding information to be provided in the traffic assessment, including heavy vehicle movements, car parking spaces, peak traffic movements, and intersection modelling
RMS	1.2.2016	Phone	Phone call with RMS officer regarding a meeting to discuss the Project. No meeting required at this stage of the Project, however would like to discuss traffic results as the project progresses
EPA	2.2.2016	Email	Email from EPA regarding a meeting on 12 February 2016 to discuss the Project SEARs, design features of the proposed operations, and to provide a Project update
DPE	8.2.2016	Phone	Phone call with DPE officer to discuss preliminary ecological results and the most appropriate pathway forward.
DPE	9.2.2016	Phone	Phone call with DPE officers regarding request advice from OEH on the preliminary ecology results
OEH	9.2.2016	Email	Email correspondence with OEH officer regarding advice on the preliminary ecology results. OEH officer advised that all discussions with OEH are to be undertaken through DPE and that they were not in a position to provide any comments on the Project until the test of adequacy
Fairfield City Council	11.2.2016	Email	Email to Fairfield City Council providing a copy of the community factsheet prepared for the Project
Fairfield City	11.2.2016	Email	Follow up email to Fairfield City Council requesting a meeting to provide an overview of the Project

Council			
Sydney Water	11.2.2016	Email	Follow up email to Sydney Water requesting a meeting to provide an overview of the Project. No response received
DPI Water	11.2.2016	Email	Follow up email to DPI Water requesting a meeting to provide an overview of the Project
DPI Water	11.2.2016	Email	Email from DPI Water officer advising that RPS email enquiry had been forward to one of DPI Waters officers for actioning
EPA	12.2.2016	Meeting	Meeting with EPA officers to provide a project update and to discuss design and operational aspects of the Project
Fairfield City Council	12.2.2016	Email	Email from Fairfield City Council stating that a meeting is not deemed required at this stage of the Project and that a meeting would be beneficial during the assessment phase
DPE	16.2.2016	Email	Correspondence sent to DPE regarding the preliminary ecological results from the Davis Road site. A request was made for some preliminary feedback from DPE and OEH on the assessment approach
DPI Water	23.2.2016	Phone	Phone call with DPI Water officer to discuss SEARs requirements in relation to riparian zones, groundwater, water licencing, and watercourses
DPE	2.3.2016	Email	Email from DPE officer confirming that FBA is not required for the Flora and Fauna assessment as EEC is being avoided
DPE	3.6.2016	Email	Letter provided to DPE informing of a change to the design of the resource recovery facility
DPE	10.6.2016	Email	Email response from DPE officer advising that revised SEARs would not be required to be issued
DPE	18.8.2016	Email	Email from DPE officer requesting an update on the submission of the Project EIS
DPE	4.11.2016	Email	Email correspondence with DPE officer regarding application fees for lodgement and assessment of the Project EIS and exhibition periods
EPA	23.11.2016	Email	Briefing note sent to the EPA regarding the odour treatment options for the proposed facility
DPI Water	14.12.2016	Email	Email from DPI Water officer advising that they do not have capacity to provide comments on the draft Ground Water Impact Assessment
RMS	19.12.2016	Email	Feedback from RMS officer regarding the draft Traffic and Transport Assessment and further clarification required on heavy vehicle movements, daily and peak traffic movements, and access and parking provisions
EPA	24.1.2017	Email	Draft Odour Impact Assessment document provided to the EPA for review and comment
EPA	15.2.2017	Email	Email from EPA officer providing comments on the draft Odour Impact Assessment asking for further odour scenarios to be modelled and clarification of SOERs.
DPE	20.2.2017	Email	Email to DPE officer advising that the final draft EIS would soon be provide to DPE for review and comment

## Community Consultation Log

Contact Details	Date	Address	Method	Description
Field Fernace Refractories	2/2/16	8 Arnott Place, Wetherill Park, NSW 2164	Door knock	Project Factsheet and Feedback Form handed to reception.
Shadey Conversions Xclusive Old Skool Wedding Cars	2/2/16	12 Arnott Place, Wetherill Park NSW 2164	Mailbox	Project Fact Sheet and Feedback Form placed in mailbox.
ECP Engineering & Auspac Trading	2/2/16	14 Arnott Place, Wetherill Park NSW 2164	Mailbox	Project Fact Sheet and Feedback Form placed in mailbox.
PRM Refrigeration	2/2/16	5 Arnott Place, Wetherill Park NSW 2164	Door knock	Project Fact Sheet and Feedback Form placed in mailbox.
Urban Stone	2/2/16	10 Arnott Place, Wetherill Park NSW 2164	Door knock	Project Factsheet and Feedback Form handed to employee.
Taylor's Aluminium & Reliable Powder Coat	2/2/16	6A & 6B Arnott Place, Wetherill Park NSW 2164	Door knock	Project Fact Sheet and Feedback Form placed in mailbox.
Meeke Engineering Pty Ltd	2/2/16	9 Arnott Place, Wetherill Park NSW 2164	Door knock	Project Factsheet and Feedback Form handed to employee.
Gardiner Denver Industries Aust Pty Ltd	2/2/16	13 Arnott Place, Wetherill Park NSW 2164	Door knock	Project Factsheet and Feedback Form slipped under locked front door of building.
B & J Bench Tops	2/2/16	2 Arnott Place, Wetherill Park NSW 2164	Door knock	Project Factsheet and Feedback Form handed to employee.
Synergy Electrical Components	2/2/16	11 Arnott Place, Wetherill Park NSW 2164	Door knock	Project Factsheet and Feedback Form handed to reception.
Baken Extra	2/2/16	3 & 4 Arnott Place, Wetherill Park NSW 2164	Door knock	Project Factsheet and Feedback Form handed to employee.
Adex Group Pty Ltd	2/2/16	7 Arnott Place, Wetherill Park NSW 2164	Door knock	Project Fact Sheet and Feedback Form placed in mailbox.

Thyssen Krupp Aerospace	3/2/16	Unit 2, 7-10 Denoci Close, Wetherill Park NSW 2164	Door knock	Project Factsheet and Feedback Form slipped under locked front door of building.
Berendsen Fluid Power	3/2/16	1-4 Denoci Close, Wetherill Park NSW 2164	Door knock	Project Factsheet and Feedback Form slipped under locked front door of building.
Ron Couch Transport	3/2/16	7 Denoci Close, Wetherill Park NSW 2164	Mailbox	Project Fact Sheet and Feedback Form placed in mailbox.
Chep Pallean Solutions	3/2/16	5 Denoci Close, Wetherill Park NSW 2164	Mailbox	Project Fact Sheet and Feedback Form placed in mailbox.
SAS Steel Fabrication Pty Ltd	2/2/16	4 Wenban Place, Wetherill Park NSW 2164	Door knock	Project Factsheet and Feedback Form handed to employee.
Nomad Materials Handling	2/2/16	1/8 Wenban Place, Wetherill Park NSW 2164	Door knock	Project Factsheet and Feedback Form handed to employee.
Waverly Forklifts Sales	2/2/16	2/8 Wenban Place, Wetherill Park NSW 2164	Door knock	Project Factsheet and Feedback Form handed to employee.
Clive Wilson Switch Gear	2/2/16	1/9 Wenban Place, Wetherill Park NSW 2164	Door knock	Project Factsheet and Feedback Form handed to employee.
Power Packaging Pty Ltd	2/2/16	2/9 Wenban Place, Wetherill Park NSW 2164	Door knock	Project Factsheet and Feedback Form handed to employee.
Sebastian Engineering	2/2/16	10 Wenban Place, Wetherill Park NSW 2164	Door knock	Project Factsheet and Feedback Form handed to employee.
Uniplex Mouldings Int. Pty Ltd	2/2/16	2, 2a & 3/5 Wenban Place, Wetherill Park NSW 2164	Door knock	Project Factsheet and Feedback Form handed to employee.
Solatube Australia	2/2/16	4-4a/5 Wenban Place, Wetherill Park NSW 2164	Door knock	Project Factsheet and Feedback Form handed to employee.
Budget Mailing Services Pty Ltd	2/2/16	7 Wenban Place, Wetherill Park NSW 2164	Door knock	Project Factsheet and Feedback Form handed to employee.
F.I.P Brakes International Pty Ltd	2/2/16	6 Wenban Place, Wetherill Park NSW 2164	Door knock	Project Factsheet and Feedback Form handed to employee.
Kult Toys	2/2/16	12 Muir Place, Wetherill Park NSW 2164	Mailbox	Project Fact Sheet and Feedback Form placed in mailbox.
Duct Australia	2/2/16	13 Muir Place, Wetherill Park	Mailbox	Project Fact Sheet and Feedback Form placed in mailbox.

		NSW 2164		
MPM Cabinets	2/2/16	Unit 12, 10 Muir Place, Wetherill Park NSW 2164	Mailbox	Project Fact Sheet and Feedback Form placed in mailbox.
Sky International	2/2/16	7 Muir Place, Wetherill Park NSW 2164	Mailbox	Project Fact Sheet and Feedback Form placed in mailbox.
Quickskips	2/2/16	8 Muir Place, Wetherill Park NSW 2164	Door knock	Project Factsheet and Feedback Form handed to employee. Given project overview. Stakeholders comments: <ul style="list-style-type: none"> <li>Greenspot can potentially accept Quickskips waste</li> <li>Site has been vacant for some time</li> <li>Asked if site had been purchased</li> </ul>
Furmanite	2/2/16	14 Muir Place, Wetherill Park NSW 2164	Mailbox	Project Fact Sheet and Feedback Form placed in mailbox.
Mirage Kitchens	2/2/16	2/3 Muir Place, Wetherill Park NSW 2164	Door knock	Business closed
Metalair	2/2/16	1/6 Muir Place, Wetherill Park NSW 2164	Door knock	Project Factsheet and Feedback Form handed to employee.
Mick & Sons Crane Repairs	2/2/16	5 Muir Place, Wetherill Park NSW 2164	Door knock	Project Factsheet and Feedback Form handed to employee.
Rotech Australia	2/2/16	4 Muir Place, Wetherill Park NSW 2164	Door knock	Project Factsheet and Feedback Form handed to employee.
Fowlerex	2/2/16	1/3 Muir Place, Wetherill Park NSW 2164	Door knock	Project Factsheet and Feedback Form handed to employee.
Airtight Solutions	2/2/16	2/3 Muir Place, Wetherill Park NSW 2164	Door knock	Project Factsheet and Feedback Form handed to employee.
RMS (Fabrications) Pty Ltd	2/2/16	2 Muir Place, Wetherill Park NSW 2164	Door knock	Project Factsheet and Feedback Form handed to employee.
DB & HR Doyle	3/2/16	10 Hargraves Place, Wetherill Park NSW 2164	Mailbox	Project Fact Sheet and Feedback Form placed in mailbox.
Plastic Packaging	3/2/16	8 Hargraves Place, Wetherill Park NSW 2164	Mailbox	Project Fact Sheet and Feedback Form placed in mailbox.
Sydney Crankshaft Centre	3/2/16	7 Hargraves Place, Wetherill Park NSW 2164	Mailbox	Project Fact Sheet and Feedback Form placed in mailbox.

Pebble Masters & Everything Pools	3/2/16	6 Hargraves Place, Wetherill Park NSW 2164	Mailbox	Project Fact Sheet and Feedback Form placed in mailbox.
Ron Partletts Auto Repair Centre	3/2/16	4 Hargraves Place, Wetherill Park NSW 2164	Door knock	Project Factsheet and Feedback Form handed to reception.
Sydney Decorative Concreters Warehouse	3/2/16	Corner Hargraves Place & Elizabeth Street, Wetherill Park NSW 2164	Door knock	Project Factsheet and Feedback Form handed to employee.
Damar Industries	3/2/16	25 Hargraves Place, Wetherill Park NSW 2164	Door knock	Project Factsheet and Feedback Form slipped under locked front door of building.
The Nutrition Link	3/2/16	13 Hargraves Place, Wetherill Park NSW 2164	Mailbox	Project Fact Sheet and Feedback Form placed in mailbox.
C&M Stainless Fabrications	3/2/16	2-15 Hargraves Place, Wetherill Park NSW 2164	Mailbox	Project Fact Sheet and Feedback Form placed in mailbox.
Macarthur Gas	3/2/16	16 Hargraves Place, Wetherill Park NSW 2164	Mailbox	Project Fact Sheet and Feedback Form placed in mailbox.
Sika Australia	3/2/16	18 Hargraves Place, Wetherill Park NSW 2164	Mailbox	Project Fact Sheet and Feedback Form placed in mailbox.
Manco Engineering	3/2/16	Unit 2, 20 Hargraves Place, Wetherill Park NSW 2164	Mailbox	Project Fact Sheet and Feedback Form placed in mailbox.
Unknown	3/2/16	21 Hargraves Place, Wetherill Park NSW 2164	Mailbox	Project Fact Sheet and Feedback Form placed in mailbox.
B.H Kitchen Trading Co	3/2/16	22 Hargraves Place, Wetherill Park NSW 2164	Mailbox	Project Fact Sheet and Feedback Form placed in mailbox.
Abstract Aluminium	3/2/16	24 Hargraves Place, Wetherill Park NSW 2164	Mailbox	Project Fact Sheet and Feedback Form placed in mailbox.
Cleopatras	3/2/16	12 Hargraves Place, Wetherill Park NSW 2164	Mailbox	Project Fact Sheet and Feedback Form placed in mailbox.
Bradbury Plant Hire	3/2/16	11 Hargraves Place, Wetherill Park NSW 2164	Mailbox	Project Fact Sheet and Feedback Form placed in mailbox.
Greg Houston Plumbing	3/2/16	9 Hargraves Place, Wetherill Park NSW 2164	Mailbox	Project Fact Sheet and Feedback Form placed in mailbox.
Artcraft	3/2/16	11 Allen Place, Wetherill Park	Door knock	Project Factsheet and Feedback Form slipped under locked front door of building.

		NSW 2164		
HNL Warehousing	3/2/16	10 Allen Place, Wetherill Park NSW 2164	Mailbox	Project Fact Sheet and Feedback Form placed in mailbox.
Austworld	3/2/16	9 Allen Place, Wetherill Park NSW 2164	Mailbox	Project Fact Sheet and Feedback Form placed in mailbox.
Wilabee Floor Service Sales	3/2/16	4 Allen Place, Wetherill Park NSW 2164	Mailbox	Project Fact Sheet and Feedback Form placed in mailbox.
Mullins Wheels	3/2/16	12 Allen Place, Wetherill Park NSW 2164	Mailbox	Project Fact Sheet and Feedback Form placed in mailbox.
NRMA	3/2/16	3 Allen Place, Wetherill Park NSW 2164	Mailbox	Project Fact Sheet and Feedback Form placed in mailbox.
Riverside Glass	3/2/16	2 Allen Place, Wetherill Park NSW 2164	Mailbox	Project Fact Sheet and Feedback Form placed in mailbox.
GT1 Trading	3/2/16	5 Allen Place, Wetherill Park NSW 2164	Mailbox	Project Fact Sheet and Feedback Form placed in mailbox.
Task Australia	3/2/16	14 Allen Place, Wetherill Park NSW 2164	No Access	Gates locked, no mailbox, no fact sheet left.
Shell Service Centre	3/2/16	Corner of Elizabeth and Victoria Streets, Wetherill Park NSW 2164	Door knock	Project Factsheet and Feedback Form handed to employee.
Canto Smash Repairs	3/2/16	35 Elizabeth Street, Wetherill Park NSW 2164	Mailbox	Project Fact Sheet and Feedback Form placed in mailbox.
Canadian Bacon	3/2/16	33 Elizabeth Street, Wetherill Park NSW 2164	Mailbox	Project Fact Sheet and Feedback Form placed in mailbox.
Unknown	3/2/16	35 Elizabeth Street, Wetherill Park NSW 2164	Mailbox	Project Fact Sheet and Feedback Form placed in mailbox.
Jetcut Australia, Pro Laser Products, Snap, The Junction Works, Fill Pack, Cafe Chairs Sydney, Wrought Iron Supermarket, AWIS, Ink Gloo	3/2/16	31 Elizabeth Street, Wetherill Park NSW 2164	Mailbox	Project Fact Sheet and Feedback Form placed in mailbox.



24 Units	3/2/16	31 Elizabeth Street, Wetherill Park NSW 2164	Mailbox	Project Fact Sheet and Feedback Form placed in mailbox.
1825 Interiors	3/2/16	29 Elizabeth Street, Wetherill Park NSW 2164	Mailbox	Project Fact Sheet and Feedback Form placed in mailbox.
Tyre Land	3/2/16	27 Elizabeth Street, Wetherill Park NSW 2164	Mailbox	Project Fact Sheet and Feedback Form placed in mailbox.
Abruzzo Ceramics	3/2/16	22 Elizabeth Street, Wetherill Park NSW 2164	Mailbox	Project Fact Sheet and Feedback Form placed in mailbox.
Illuminate Yoga, Pristine printing, New Era Property Development & Branca Micrographics	3/2/16	24 Elizabeth Street, Wetherill Park NSW 2164	Mailbox	Project Fact Sheet and Feedback Form placed in mailbox.
Desiderio Wood fired Pizza	3/2/16	Elizabeth Street, Wetherill Park NSW 2164	Door knock	Project Factsheet and Feedback Form handed to employee.
Nona's Kitchens & Joinery, Pronto Balloons & Prima International Foods	3/2/16	18-20 Elizabeth Street, Wetherill Park NSW 2164	Mailbox	Project Fact Sheet and Feedback Form placed in mailbox.
Stone Factory	3/2/16	26 Elizabeth Street, Wetherill Park NSW 2164	Door knock	Project Factsheet and Feedback Form handed to reception.
KJE Electric	3/2/16	50 Elizabeth Street, Wetherill Park NSW 2164	Mailbox	Project Fact Sheet and Feedback Form placed in mailbox.
Vetalogistics	3/2/16	50 Elizabeth Street, Wetherill Park NSW 2164	Mailbox	Project Fact Sheet and Feedback Form placed in mailbox.
L W Reid	3/2/16	46 Elizabeth Street, Wetherill Park NSW 2164	Door knock	Project Factsheet and Feedback Form handed to reception.
The Nut Stop, AFA Sheetmetal, The Rumble Shack, BPS Food Services, CMPS, Austcam Tyre Systems, Golden Touch	3/2/16	38-44 Elizabeth Street, Wetherill Park NSW 2164	Mailbox	Project Fact Sheet and Feedback Form placed in mailbox.

Masonry, Jonica & Tom's One Stop Auto Shop				
Elumatec	3/2/16	14 Elizabeth Street, Wetherill Park NSW 2164	Door knock	Project Factsheet and Feedback Form handed to employee.
Tyre Right & Truck Align	3/2/16	30 Elizabeth Street, Wetherill Park NSW 2164	Door knock	Project Factsheet and Feedback Form handed to owner. Asked about location and will read through factsheet.
W. Park Smash Repairs, Luxury Paints, TLE Electrical, Dance XS	3/2/16	30 Elizabeth Street, Wetherill Park NSW 2164	Mailbox	Project Fact Sheet and Feedback Form placed in mailbox.
ABC Tissue Products	3/2/16	49 Elizabeth Street, Wetherill Park NSW 2164	Mailbox	Project Fact Sheet and Feedback Form placed in mailbox.
Sika Australia	3/2/16	55 Elizabeth Street, Wetherill Park NSW 2164	Door knock	Project Factsheet and Feedback Form handed to reception.
Assorted Businesses	3/2/16	65 Elizabeth Street, Wetherill Park NSW 2164	Mailbox	Project Fact Sheet and Feedback Form placed in mailbox.
Perex Dauco Australia	3/2/16	7 Elizabeth Street, Wetherill Park NSW 2164	Door knock	Project Factsheet and Feedback Form handed to reception.
Transform Retail Projects	3/2/16	21-23 Elizabeth Street, Wetherill Park NSW 2164	Mailbox	Project Fact Sheet and Feedback Form placed in mailbox.
Total Fasteners	3/2/16	17 Elizabeth Street, Wetherill Park NSW 2164	Door knock	Project Factsheet and Feedback Form handed to employee.
Sunscreen Carports & Awnings	3/2/16	12 Elizabeth Street, Wetherill Park NSW 2164	Mailbox	Project Fact Sheet and Feedback Form placed in mailbox.
6 Businesses	3/2/16	14-16 Elizabeth Street, Wetherill Park NSW 2164	Mailbox	Project Fact Sheet and Feedback Form placed in mailbox.
MP Australia & New Zealand	3/2/16	54 Elizabeth Street, Wetherill Park NSW 2164	Door knock	Project Factsheet and Feedback Form handed to reception. Moving in a few weeks.
Prestige Joinery Australia	3/2/16	71 Elizabeth Street, Wetherill Park NSW 2164	Mailbox	Project Fact Sheet and Feedback Form placed in mailbox.
Hogans Wholesale	3/2/16	66 Elizabeth Street, Wetherill Park NSW 2164	Mailbox	Project Fact Sheet and Feedback Form placed in mailbox.
Parchem	3/2/16	64 Elizabeth Street, Wetherill	Mailbox	Project Fact Sheet and Feedback Form placed in mailbox.

Construction Supplies		Park NSW 2164		
Rinnai	3/2/16	62 Elizabeth Street, Wetherill Park NSW 2164	Door knock	Project Factsheet and Feedback Form slipped under locked front door of building.
Win Kwons Pty Ltd	3/2/16	60 Elizabeth Street, Wetherill Park NSW 2164	Door knock	Project Factsheet and Feedback Form handed to reception.
Kolder	3/2/16	56 Elizabeth Street, Wetherill Park NSW 2164	Mailbox	Project Fact Sheet and Feedback Form placed in mailbox.
Towers Transport	3/2/16	71B Elizabeth Street, Wetherill Park NSW 2164	Door knock	Project Factsheet and Feedback Form handed to reception.
Fresh Produce Packing & Logistics	3/2/16	73B Elizabeth Street, Wetherill Park NSW 2164	Door knock	Project Factsheet and Feedback Form handed to reception.
Cyclone Tools	3/2/16	73 Elizabeth Street, Wetherill Park NSW 2164	Door knock	Project Factsheet and Feedback Form slipped under locked front door of building.
Unknown	3/2/16	75-79 Elizabeth Street, Wetherill Park NSW 2164	Mailbox	Project Fact Sheet and Feedback Form placed in mailbox.
Flame Cut	3/2/16	68 Elizabeth Street, Wetherill Park NSW 2164	Door knock	Project Factsheet and Feedback Form handed to reception.
Danny Jones	3/2/16	81 Elizabeth Street, Wetherill Park NSW 2164	Mailbox	Project Fact Sheet and Feedback Form placed in mailbox.
Service Stream Communications	3/2/16	5 Centre Place, Wetherill Park NSW 2164	No Access	Gates locked, no mailbox, no fact sheet left.
Vaccaro Group	3/2/16	4 Centre Place, Wetherill Park NSW 2164	Door knock	Project Factsheet and Feedback Form left inside building.
Haltech Engine Management Systems	3/2/16	3 Centre Place, Wetherill Park NSW 2164	Mailbox	Project Fact Sheet and Feedback Form placed in mailbox.
Extel Aluminium	3/2/16	2 Centre Place, Wetherill Park NSW 2164	Mailbox	Project Fact Sheet and Feedback Form placed in mailbox.
SAS Sales	3/2/16	9 Centre Place, Wetherill Park NSW 2164	Mailbox	Project Fact Sheet and Feedback Form placed in mailbox.
KMMJ Engineering	3/2/16	8 Centre Place, Wetherill Park NSW 2164	Mailbox	Project Fact Sheet and Feedback Form placed in mailbox.
Philmac	3/2/16	7 Centre Place, Wetherill Park	Door knock	Project Factsheet and Feedback Form slipped under locked front door of building.

		NSW 2164		
Ivan Campers & Trailers	3/2/16	13 Centre Place, Wetherill Park NSW 2164	Mailbox	Project Fact Sheet and Feedback Form placed in mailbox.
MM Miller Engineering	3/2/16	12 Centre Place, Wetherill Park NSW 2164	Mailbox	Project Fact Sheet and Feedback Form placed in mailbox.
Mal Hooley Truck Repairs & Servicing	2/2/16	Unit 2, 19 Davis Road, Wetherill Park NSW 2164	Door knock	Project Factsheet and Feedback Form handed to Owner. Stakeholders comments: <ul style="list-style-type: none"> <li>Steel trucks back up across the road</li> <li>Smell first thing in the morning</li> <li>B Doubles in the morning, limited car parking</li> </ul>
OZM	2/2/16	Unit 1, 19 Davis Road, Wetherill Park NSW 2164	Door knock	Project Factsheet and Feedback Form handed to Owner.
One Steel Recycling	2/2/16	23 Davis Road, Wetherill Park NSW 2164	Door knock	Project Factsheet and Feedback Form handed to reception.
Albright & Wilson	2/2/16	21-22 Davis Road, Wetherill Park NSW 2164	Door knock	Project Factsheet and Feedback Form handed to reception.
Select-o-Pedic	2/2/16	17 Davis Road, Wetherill Park NSW 2164	Door knock	Project Factsheet and Feedback Form handed to reception.
Universal Mobile Tower Hire	2/2/16	18 Davis Road, Wetherill Park NSW 2164	Mailbox	Project Fact Sheet and Feedback Form placed in mailbox.
Sky Communications, B Lek Supply	2/2/16	26A Davis Road, Wetherill Park NSW 2164	Door knock	Project Factsheet and Feedback Form handed to Owner.
Cafe on Davis	2/2/16	10/14 Davis Road, Wetherill Park NSW 2164	Door knock	Project Factsheet and Feedback Form handed to Owner. Stakeholders comments: <ul style="list-style-type: none"> <li>Asked about approval time</li> <li>Number of staff working on site</li> </ul>
Ridley Agri Products and D&D Haulage	2/2/16	15 & 15A Davis Road, Wetherill Park NSW 2164	Mailbox	Project Fact Sheet and Feedback Form placed in mailbox.
Flamestop, E&K Sunrise	2/2/16	16A Davis Road, Wetherill Park NSW 2164	Mailbox	Project Fact Sheet and Feedback Form placed in mailbox.
GE Smash Repair & Detail,	2/2/16	7, 9/10 Davis Road, Wetherill Park NSW 2164	Mailbox	Project Fact Sheet and Feedback Form placed in mailbox.

Head Turning Performance				
General Staircase	2/2/16	12B, 13 Davis Road, Wetherill Park NSW 2164	Door knock	Project Factsheet and Feedback Form handed to reception.
El Toro Smash & Mechanical Repairs	2/2/16	11 Davis Road, Wetherill Park NSW 2164	Door knock	Project Factsheet and Feedback Form handed to reception.
Windscreens By Jennings	2/2/16	12A Davis Road, Wetherill Park NSW 2164	Door knock	Project Factsheet and Feedback Form handed to reception. Confirmed date of site information session.
Smash Repairs	2/2/16	26B Davis Road, Wetherill Park NSW 2164	Door knock	Project Factsheet and Feedback Form handed to Owner.
Master Kitchens	2/2/16	2/27 Davis Road, Wetherill Park NSW 2164	Door knock	Project Factsheet and Feedback Form handed to employee.
A & E Food Ingredients	2/2/16	27A Davis Road, Wetherill Park NSW 2164	Door knock	Project Factsheet and Feedback Form slipped under locked front door of building.
Stauff Pty Ltd	2/2/16	27B Davis Road, Wetherill Park NSW 2164	Door knock	Project Factsheet and Feedback Form handed to reception.
J&J Lunchspot	2/2/16	27A Davis Road, Wetherill Park NSW 2164	Door knock	Project Factsheet and Feedback Form handed to Owner.
Hi-Trans Express	2/2/16	28 Davis Road, Wetherill Park NSW 2164	Mailbox	Project Fact Sheet and Feedback Form placed in mailbox.
A & J Australia	2/2/16	29 Davis Road, Wetherill Park NSW 2164	Mailbox	Project Fact Sheet and Feedback Form placed in mailbox.
King B Wilson	2/2/16	29B Davis Road, Wetherill Park NSW 2164	Door knock	Project Factsheet and Feedback Form slipped under locked front door of building.
UTC Aerospace Systems	2/2/16	29 Davis Road, Wetherill Park NSW 2164	Door knock	Project Factsheet and Feedback Form slipped under locked front door of building.
Valvoline Pty Ltd	2/2/16	30 Davis Road, Wetherill Park NSW 2164	Mailbox	Project Fact Sheet and Feedback Form placed in mailbox.
Newly Weds Foods	2/2/16	32-33 Davis Road, Wetherill Park NSW 2164	Door knock	Project Factsheet and Feedback Form handed to reception.
Prydes	2/2/16	34 Davis Road, Wetherill Park NSW 2164	Door knock	Project Factsheet and Feedback Form handed to reception.
Goodman Property Owners	2/2/16	3 Davis Road, Wetherill Park NSW 2164	Mailbox	Project Fact Sheet and Feedback Form placed in mailbox.

& Managers				
Yusen Logistics	2/2/16	1/3 Davis Road, Wetherill Park NSW 2164	Mailbox	Project Fact Sheet and Feedback Form placed in mailbox.
Costco Wholesale	2/2/16	2/3 Davis Road, Wetherill Park NSW 2164	Mailbox	Project Fact Sheet and Feedback Form placed in mailbox.
Unknown	2/2/16	4 Davis Road, Wetherill Park NSW 2164	Door knock	Premises vacant.
Amadon Pty Ltd	2/2/16	5 Davis Road, Wetherill Park NSW 2164	Door knock	Project Factsheet and Feedback Form handed to employee.
Transpacific Ind. Group Pty Ltd	2/2/16	6 Davis Road, Wetherill Park NSW 2164	Door knock	Project Factsheet and Feedback Form handed to employee.
Key Industries/Key Acoustics	2/2/16	7-8 Davis Road, Wetherill Park NSW 2164	Door knock	Project Factsheet and Feedback Form handed to employee. Interested in being able to dispose of timber waste at the facility.
Penfold Office Choice	2/2/16	9 Davis Road, Wetherill Park NSW 2164	Door knock	Project Factsheet and Feedback Form slipped under locked front door of building.
Fagersta	2/2/16	10 Davis Road, Wetherill Park NSW 2164	Door knock	Project Factsheet and Feedback Form handed to employee.
West End Diesel Services	2/2/16	26 Davis Road, Wetherill Park NSW 2164	Door knock	Project Factsheet and Feedback Form handed to employee.
Unknown	2/2/16	24 Davis Road, Wetherill Park NSW 2164	Door knock	Premises vacant.
Unknown	2/2/16	25A Davis Road, Wetherill Park NSW 2164	Door knock	Premises vacant.
Freight Specialists (owned by Stocklands)	2/2/16	2 Davis Road, Wetherill Park NSW 2164	Door knock	Project Factsheet and Feedback Form handed to reception.
Artis	5/2/16	429 Victoria Street, Wetherill Park NSW 2164	Mail	Project Factsheet and Feedback Form posted.
Unknown	5/2/16	430 Victoria Street, Wetherill Park NSW 2164	Mail	Project Factsheet and Feedback Form posted.
Unknown	5/2/16	431 Victoria Street, Wetherill Park NSW 2164	Mail	Project Factsheet and Feedback Form posted.
Unknown	5/2/16	423-437 Victoria Street,	Mail	Project Factsheet and Feedback Form posted.

		Wetherill Park NSW 2164		
Briggs	5/2/16	409 Victoria Street, Wetherill Park NSW 2164	Mail	Project Factsheet and Feedback Form posted.
Unknown	5/2/16	407 Victoria Street, Wetherill Park NSW 2164	Mail	Project Factsheet and Feedback Form posted.
Tesrol Joinery	5/2/16	405 Victoria Street, Wetherill Park NSW 2164	Mail	Project Factsheet and Feedback Form posted.
Pro Cool Refrigeration and Air-conditioning	5/2/16	379 Victoria Street, Wetherill Park NSW 2164	Mail	Project Factsheet and Feedback Form posted.
Unknown	5/2/16	380 Victoria Street, Wetherill Park NSW 2164	Mail	Project Factsheet and Feedback Form posted.
Unknown	5/2/16	381 Victoria Street, Wetherill Park NSW 2164	Mail	Project Factsheet and Feedback Form posted.
Unknown	5/2/16	377 Victoria Street, Wetherill Park NSW 2164	Mail	Project Factsheet and Feedback Form posted.
Unknown	5/2/16	Unit 1, 369 Victoria Street, Wetherill Park NSW 2164	Mail	Project Factsheet and Feedback Form posted.
Fabro Engineering	5/2/16	371 Victoria Street, Wetherill Park NSW 2164	Mail	Project Factsheet and Feedback Form posted.
Unknown	5/2/16	372 Victoria Street, Wetherill Park NSW 2164	Mail	Project Factsheet and Feedback Form posted.
Unknown	5/2/16	373 Victoria Street, Wetherill Park NSW 2164	Mail	Project Factsheet and Feedback Form posted.
Unknown	5/2/16	367 Victoria Street, Wetherill Park NSW 2164	Mail	Project Factsheet and Feedback Form posted.
Unknown	5/2/16	368 Victoria Street, Wetherill Park NSW 2164	Mail	Project Factsheet and Feedback Form posted.
Unknown	5/2/16	Unit 1, 369 Victoria Street, Wetherill Park NSW 2164	Mail	Project Factsheet and Feedback Form posted.
Unknown	5/2/16	Unit 2, 369 Victoria Street, Wetherill Park NSW 2164	Mail	Project Factsheet and Feedback Form posted.
Unknown	5/2/16	Unit 3, 369 Victoria Street, Wetherill Park NSW 2164	Mail	Project Factsheet and Feedback Form posted.
Unknown	5/2/16	Unit 4, 369 Victoria Street,	Mail	Project Factsheet and Feedback Form posted.

		Wetherill Park NSW 2164		
Unknown	5/2/16	Unit 5, 369 Victoria Street, Wetherill Park NSW 2164	Mail	Project Factsheet and Feedback Form posted.
Unknown	5/2/16	Unit 6, 369 Victoria Street, Wetherill Park NSW 2164	Mail	Project Factsheet and Feedback Form posted.
Unknown	5/2/16	Unit 7, 369 Victoria Street, Wetherill Park NSW 2164	Mail	Project Factsheet and Feedback Form posted.
Unknown	5/2/16	Unit 8, 369 Victoria Street, Wetherill Park NSW 2164	Mail	Project Factsheet and Feedback Form posted.
Unknown	5/2/16	Unit 9, 369 Victoria Street, Wetherill Park NSW 2164	Mail	Project Factsheet and Feedback Form posted.
Unknown	5/2/16	Unit 10, 369 Victoria Street, Wetherill Park NSW 2164	Mail	Project Factsheet and Feedback Form posted.
Unknown	5/2/16	Unit 11, 369 Victoria Street, Wetherill Park NSW 2164	Mail	Project Factsheet and Feedback Form posted.
Unknown	5/2/16	Unit 12, 369 Victoria Street, Wetherill Park NSW 2164	Mail	Project Factsheet and Feedback Form posted.
Unknown	5/2/16	Unit 13, 369 Victoria Street, Wetherill Park NSW 2164	Mail	Project Factsheet and Feedback Form posted.
Unknown	5/2/16	Unit 14, 369 Victoria Street, Wetherill Park NSW 2164	Mail	Project Factsheet and Feedback Form posted.
Unknown	5/2/16	Unit 15, 369 Victoria Street, Wetherill Park NSW 2164	Mail	Project Factsheet and Feedback Form posted.
Unknown	5/2/16	Unit 16, 369 Victoria Street, Wetherill Park NSW 2164	Mail	Project Factsheet and Feedback Form posted.
Unknown	5/2/16	Unit 17, 369 Victoria Street, Wetherill Park NSW 2164	Mail	Project Factsheet and Feedback Form posted.
Unknown	5/2/16	Unit 18, 369 Victoria Street, Wetherill Park NSW 2164	Mail	Project Factsheet and Feedback Form posted.
Unknown	5/2/16	Unit 19, 369 Victoria Street, Wetherill Park NSW 2164	Mail	Project Factsheet and Feedback Form posted.
Unknown	5/2/16	Unit 20, 369 Victoria Street, Wetherill Park NSW 2164	Mail	Project Factsheet and Feedback Form posted.
Unknown	5/2/16	363-365 Victoria Street, Wetherill Park NSW 2164	Mail	Project Factsheet and Feedback Form posted.



Everhand Industries	5/2/16	400 Victoria Street, Wetherill Park NSW 2164	Mail	Project Factsheet and Feedback Form posted.
Brimac	5/2/16	396-398 Victoria Street, Wetherill Park NSW 2164	Mail	Project Factsheet and Feedback Form posted.
CSR	5/2/16	376-394 Victoria Street, Wetherill Park NSW 2164	Mail	Project Factsheet and Feedback Form posted.
OneSteel Metalcentre	5/2/16	372-374 Victoria Street, Wetherill Park NSW 2164	Mail	Project Factsheet and Feedback Form posted.
Unknown	5/2/16	364 Victoria Street, Wetherill Park NSW 2164	Mail	Project Factsheet and Feedback Form posted.
Stratos Seating	5/2/16	360 Victoria Street, Wetherill Park NSW 2164	Mail	Project Factsheet and Feedback Form posted.
Mayne Logistics	5/2/16	350 Victoria Street, Wetherill Park NSW 2164	Mail	Project Factsheet and Feedback Form posted.
Westucks Truck Bodybuilders	5/2/16	340 Victoria Street, Wetherill Park NSW 2164	Mail	Project Factsheet and Feedback Form posted.
Unknown	5/2/16	320 Victoria Street, Wetherill Park NSW 2164	Mail	Project Factsheet and Feedback Form posted.
Gainsborough Hardware Industries	5/2/16	26-32 Walter Street, Wetherill Park NSW 2164	Mail	Project Factsheet and Feedback Form posted.
Workforce Road Services	5/2/16	92 Redfern Street, Wetherill Park NSW 2164	Mail	Project Factsheet and Feedback Form posted.
Tank Management Services	5/2/16	89 Redfern Street, Wetherill Park NSW 2164	Mail	Project Factsheet and Feedback Form posted.
Great Mark	5/2/16	87 Redfern Street, Wetherill Park NSW 2164	Mail	Project Factsheet and Feedback Form posted.
Harding Security Doors and Gates	5/2/16	87 Redfern Street, Wetherill Park NSW 2164	Mail	Project Factsheet and Feedback Form posted.
LNS Mechanic	5/2/16	87 Redfern Street, Wetherill Park NSW 2164	Mail	Project Factsheet and Feedback Form posted.
Pars for Floors	5/2/16	87 Redfern Street, Wetherill Park NSW 2164	Mail	Project Factsheet and Feedback Form posted.
PK Distributors	5/2/16	87 Redfern Street, Wetherill	Mail	Project Factsheet and Feedback Form posted.

		Park NSW 2164		
Manufactured Alloy Xtras	5/2/16	85 Redfern Street, Wetherill Park NSW 2164	Mail	Project Factsheet and Feedback Form posted.
Fairfield Electric Services	5/2/16	83 Redfern Street, Wetherill Park NSW 2164	Mail	Project Factsheet and Feedback Form posted.
DOSmith and Sons	5/2/16	81 Redfern Street, Wetherill Park NSW 2164	Mail	Project Factsheet and Feedback Form posted.
Time Road Transport	5/2/16	79 Redfern Street, Wetherill Park NSW 2164	Mail	Project Factsheet and Feedback Form posted.
Abbey Pallets	5/2/16	77 Redfern Street, Wetherill Park NSW 2164	Mail	Project Factsheet and Feedback Form posted.
Dutt Transport	5/2/16	75 Redfern Street, Wetherill Park NSW 2164	Mail	Project Factsheet and Feedback Form posted.
ABC Paper and Paper Mills	5/2/16	63-65 Redfern Street, Wetherill Park NSW 2164	Mail	Project Factsheet and Feedback Form posted.
FX Australia	5/2/16	86 Redfern Street, Wetherill Park NSW 2164	Mail	Project Factsheet and Feedback Form posted.
Xuan Hung Hot Bread	5/2/16	84 Redfern Street, Wetherill Park NSW 2164	Mail	Project Factsheet and Feedback Form posted.
ABMS Truck Repairs	5/2/16	82 Redfern Street, Wetherill Park NSW 2164	Mail	Project Factsheet and Feedback Form posted.
Custom Built Wardrobes	5/2/16	80 Redfern Street, Wetherill Park NSW 2164	Mail	Project Factsheet and Feedback Form posted.
3d Wall Panels	5/2/16	80 Redfern Street, Wetherill Park NSW 2164	Mail	Project Factsheet and Feedback Form posted.
Sydney Doors	5/2/16	80 Redfern Street, Wetherill Park NSW 2164	Mail	Project Factsheet and Feedback Form posted.
Bronze and Silver Glass	5/2/16	78 Redfern Street, Wetherill Park NSW 2164	Mail	Project Factsheet and Feedback Form posted.
Careform	5/2/16	74-76 Redfern Street, Wetherill Park NSW 2164	Mail	Project Factsheet and Feedback Form posted.
ABC Tissue Products	5/2/16	62-72 Redfern Street, Wetherill Park NSW 2164	Mail	Project Factsheet and Feedback Form posted.
Grima Recycling	5/2/16	88 Redfern Street, Wetherill Park NSW 2164	Mail	Project Factsheet and Feedback Form posted.

Workforce Road Services	5/2/16	92-94 Redfern Street, Wetherill Park NSW 2164	Mail	Project Factsheet and Feedback Form posted.
Business owner	5/2/16	96 Redfern Street, Wetherill Park NSW 2164	Mail	Project Factsheet and Feedback Form posted.
Hyundai Construction Equipment	5/2/16	100-102 Redfern Street, Wetherill Park NSW 2164	Mail	Project Factsheet and Feedback Form posted.
Nufab Engineering	5/2/16	104 Redfern Street, Wetherill Park NSW 2164	Mail	Project Factsheet and Feedback Form posted.
Australia United	5/2/16	106 Redfern Street, Wetherill Park NSW 2164	Mail	Project Factsheet and Feedback Form posted.
Arnco Industries	5/2/16	108 Redfern Street, Wetherill Park NSW 2164	Mail	Project Factsheet and Feedback Form posted.
ASA	5/2/16	108 Redfern Street, Wetherill Park NSW 2164	Mail	Project Factsheet and Feedback Form posted.
EJ	5/2/16	110 Redfern Street, Wetherill Park NSW 2164	Mail	Project Factsheet and Feedback Form posted.
Nu Tech Group Pty Ltd	5/2/16	5 Frank Street, Wetherill Park NSW 2164	Mail	Project Factsheet and Feedback Form posted.
Starline Special Purpose Vehciles	5/2/16	5 Frank Street, Wetherill Park NSW 2164	Mail	Project Factsheet and Feedback Form posted.
Dawsons Removals	5/2/16	9 Frank Street, Wetherill Park NSW 2164	Mail	Project Factsheet and Feedback Form posted.
Annandale Timber & Moulding	5/2/16	11 Frank Street, Wetherill Park NSW 2164	Mail	Project Factsheet and Feedback Form posted.
Business Owner	5/2/16	13 Frank Street, Wetherill Park NSW 2164	Mail	Project Factsheet and Feedback Form posted.
Screenmasters Australia	5/2/16	15 Frank Street, Wetherill Park NSW 2164	Mail	Project Factsheet and Feedback Form posted.
Forstaff	5/2/16	15 Frank Street, Wetherill Park NSW 2164	Mail	Project Factsheet and Feedback Form posted.
A Aaaaachen Pty Ltd	5/2/16	15 Frank Street, Wetherill Park NSW 2164	Mail	Project Factsheet and Feedback Form posted.

Gippsland Direct	5/2/16	17 Frank Street, Wetherill Park NSW 2164	Mail	Project Factsheet and Feedback Form posted.
Kellys & Young Trucking	5/2/16	17 Frank Street, Wetherill Park NSW 2164	Mail	Project Factsheet and Feedback Form posted.
Pickering Transport	5/2/16	17 Frank Street, Wetherill Park NSW 2164	Mail	Project Factsheet and Feedback Form posted.
Stora Enso Timber	5/2/16	19-21 Frank Street, Wetherill Park NSW 2164	Mail	Project Factsheet and Feedback Form posted.
Comfort Uniforms	5/2/16	25 Frank Street, Wetherill Park NSW 2164	Mail	Project Factsheet and Feedback Form posted.
Region Peak	5/2/16	25 Frank Street, Wetherill Park NSW 2164	Mail	Project Factsheet and Feedback Form posted.
Border Express	5/2/16	27-33 Frank Street, Wetherill Park NSW 2164	Mail	Project Factsheet and Feedback Form posted.
Business Owner	5/2/16	35 Frank Street, Wetherill Park NSW 2164	Mail	Project Factsheet and Feedback Form posted.
Business Owner	5/2/16	39-41 Frank Street, Wetherill Park NSW 2164	Mail	Project Factsheet and Feedback Form posted.
Islander Foodservice	5/2/16	45 Frank Street, Wetherill Park NSW 2164	Mail	Project Factsheet and Feedback Form posted.
Reflex Equip	5/2/16	47 Frank Street, Wetherill Park NSW 2164	Mail	Project Factsheet and Feedback Form posted.
Australian Lifting Centre	5/2/16	43 Frank Street, Wetherill Park NSW 2164	Mail	Project Factsheet and Feedback Form posted.
Austlift	5/2/16	43 Frank Street, Wetherill Park NSW 2164	Mail	Project Factsheet and Feedback Form posted.
WesTrac	5/2/16	26-28 Frank Street, Wetherill Park NSW 2164	Mail	Project Factsheet and Feedback Form posted.
Made for School	5/2/16	4-6 Frank Street, Wetherill Park NSW 2164	Mail	Project Factsheet and Feedback Form posted.
Bright Print Group	5/2/16	8 Frank Street, Wetherill Park NSW 2164	Mail	Project Factsheet and Feedback Form posted.
Attn: Business Owner	5/2/16	12 Frank Street, Wetherill Park NSW 2164	Mail	Project Factsheet and Feedback Form posted.

Austrans & Co Pty Ltd	5/2/16	30 Frank Street, Wetherill Park NSW 2164	Mail	Project Factsheet and Feedback Form posted.
Benkirk Pty Ltd	5/2/16	30 Frank Street, Wetherill Park NSW 2164	Mail	Project Factsheet and Feedback Form posted.
Sleepmaker	5/2/16	32 Frank Street, Wetherill Park NSW 2164	Mail	Project Factsheet and Feedback Form posted.
Frank Tedesco Pty Ltd	5/2/16	28-44 Frank Street, Wetherill Park NSW 2164	Mail	Project Factsheet and Feedback Form posted.
Laws Auctions Timber	5/2/16	4 Kellaway Place, Wetherill Park NSW 2164	Mail	Project Factsheet and Feedback Form posted.
UltraPress	5/2/16	5 Kellaway Place, Wetherill Park NSW 2164	Mail	Project Factsheet and Feedback Form posted.
Azary Smash Repairs	5/2/16	7 Kellaway Place, Wetherill Park NSW 2164	Mail	Project Factsheet and Feedback Form posted.
Shoplifting Services	5/2/16	7 Kellaway Place, Wetherill Park NSW 2164	Mail	Project Factsheet and Feedback Form posted.
Electric Transit	5/2/16	7 Kellaway Place, Wetherill Park NSW 2164	Mail	Project Factsheet and Feedback Form posted.
Chemidry Glass Coating	5/2/16	7 Kellaway Place, Wetherill Park NSW 2164	Mail	Project Factsheet and Feedback Form posted.
Bodyliner Smash Repairs	5/2/16	7 Kellaway Place, Wetherill Park NSW 2164	Mail	Project Factsheet and Feedback Form posted.
Andrea's Steel Fabrication	5/2/16	7 Kellaway Place, Wetherill Park NSW 2164	Mail	Project Factsheet and Feedback Form posted.
South West Upholstery	5/2/16	7 Kellaway Place, Wetherill Park NSW 2164	Mail	Project Factsheet and Feedback Form posted.
Twins Panel and Paint	5/2/16	7 Kellaway Place, Wetherill Park NSW 2164	Mail	Project Factsheet and Feedback Form posted.
Akzo Nobel Pty Ltd	5/2/16	8 Kellaway Place, Wetherill Park NSW 2164	Mail	Project Factsheet and Feedback Form posted.
Hangersale Australia	5/2/16	9 Kellaway Place, Wetherill Park NSW 2164	Mail	Project Factsheet and Feedback Form posted.
Nu Line Construction	5/2/16	9 Kellaway Place, Wetherill Park NSW 2164	Mail	Project Factsheet and Feedback Form posted.

Champtrade International	5/2/16	10 Kellaway Place, Wetherill Park NSW 2164	Mail	Project Factsheet and Feedback Form posted.
Specialty Products and Dispensers	5/2/16	9 Widemere Road, Wetherill Park NSW 2164	Mail	Project Factsheet and Feedback Form posted.
The Bottle People	5/2/16	9 Widemere Road, Wetherill Park NSW 2164	Mail	Project Factsheet and Feedback Form posted.
PB Packaging	5/2/16	9 Widemere Road, Wetherill Park NSW 2164	Mail	Project Factsheet and Feedback Form posted.
Steritech	5/2/16	5-7 Widemere Road, Wetherill Park NSW 2164	Mail	Project Factsheet and Feedback Form posted.
Biesse Australia	5/2/16	3 Widemere Road, Wetherill Park NSW 2164	Mail	Project Factsheet and Feedback Form posted.
Simple Grown Pty Ltd	5/2/16	1 Widemere Road, Wetherill Park NSW 2164	Mail	Project Factsheet and Feedback Form posted.
Getstuff.com.au	5/2/16	1 Widemere Road, Wetherill Park NSW 2164	Mail	Project Factsheet and Feedback Form posted.
FRB Subo Pty Ltd	5/2/16	1A Widemere Road, Wetherill Park NSW 2164	Mail	Project Factsheet and Feedback Form posted.
Orbital Autogas	5/2/16	1A Widemere Road, Wetherill Park NSW 2164	Mail	Project Factsheet and Feedback Form posted.
Michael Weinig Australia Pty Ltd	5/2/16	1B Widemere Road, Wetherill Park NSW 2164	Mail	Project Factsheet and Feedback Form posted.
AC Labels	5/2/16	132 Hassall Street, Wetherill Park NSW 2164	Mail	Project Factsheet and Feedback Form posted.
Sandwich Time	5/2/16	132 Hassall Street, Wetherill Park NSW 2164	Mail	Project Factsheet and Feedback Form posted.
Bincorp Equipment	5/2/16	197 Hassall Street, Wetherill Park NSW 2164	Mail	Project Factsheet and Feedback Form posted.
Freedom Tyres	5/2/16	199 Hassall Street, Wetherill Park NSW 2164	Mail	Project Factsheet and Feedback Form posted.
Metromix Concrete	5/2/16	136 Hassall Street, Wetherill Park NSW 2164	Mail	Project Factsheet and Feedback Form posted.
Angas Fencing Products	5/2/16	134 Hassall Street, Wetherill Park NSW 2164	Mail	Project Factsheet and Feedback Form posted.

Prometal Fabrication	5/2/16	21-23 Daniel Street, Wetherill Park NSW 2164	Mail	Project Factsheet and Feedback Form posted.
Durapol Pty Ltd	5/2/16	21-23 Daniel Street, Wetherill Park NSW 2164	Mail	Project Factsheet and Feedback Form posted.
Standard Scales & Services	5/2/16	21-23 Daniel Street, Wetherill Park NSW 2164	Mail	Project Factsheet and Feedback Form posted.
PCS Precision	5/2/16	21-23 Daniel Street, Wetherill Park NSW 2164	Mail	Project Factsheet and Feedback Form posted.
Samson Fencing & Metal Fabrication	5/2/16	21-23 Daniel Street, Wetherill Park NSW 2164	Mail	Project Factsheet and Feedback Form posted.
Mighty Mowers and Chainsaws	5/2/16	21-23 Daniel Street, Wetherill Park NSW 2164	Mail	Project Factsheet and Feedback Form posted.
Weigh-Tech Pty Ltd	5/2/16	21-23 Daniel Street, Wetherill Park NSW 2164	Mail	Project Factsheet and Feedback Form posted.
Vellex Pty Ltd	5/2/16	17 Daniel Street, Wetherill Park NSW 2164	Mail	Project Factsheet and Feedback Form posted.
Sealy of Australia	5/2/16	11-15 Daniel Street, Wetherill Park NSW 2164	Mail	Project Factsheet and Feedback Form posted.
CHEP Australia	5/2/16	7-9 Daniel Street, Wetherill Park NSW 2164	Mail	Project Factsheet and Feedback Form posted.
Fast Removalist	5/2/16	19 Daniel Street, Wetherill Park NSW 2164	Mail	Project Factsheet and Feedback Form posted.
Daniel Menolotto Fencing	5/2/16	2 Daniel Street, Wetherill Park NSW 2164	Mail	Project Factsheet and Feedback Form posted.
F.S.A Imports	5/2/16	24 Daniel Street, Wetherill Park NSW 2164	Mail	Project Factsheet and Feedback Form posted.
Mindways Psychological Services	5/2/16	12-16 Daniel Street, Wetherill Park NSW 2164	Mail	Project Factsheet and Feedback Form posted.
Coles Express	5/2/16	1181 The Horsley Drive, Wetherill Park NSW 2164	Mail	Project Factsheet and Feedback Form posted.
Oporto	5/2/16	1181 The Horsley Drive, Wetherill Park NSW 2164	Mail	Project Factsheet and Feedback Form posted.
McDonalds	5/2/16	1179 The Horsley Drive,	Mail	Project Factsheet and Feedback Form posted.

		Wetherill Park NSW 2164		
Centre Management, Greenway Supa Centre	5/2/16	1183 The Horsley Drive, Wetherill Park NSW 2164	Mail	Project Factsheet and Feedback Form posted.
Slovene Association of Sydney	5/2/16	8 Elizabeth Street, Wetherill Park NSW 2164	Mail	Project Factsheet and Feedback Form posted.
Newly Weds	18/3/16	32 Davis Road, Wetherill Park, NSW 2164	Targeted interview	Project overview. Comments received regarding project. Stakeholders comments: Project would be of a concern if there are: <ul style="list-style-type: none"> <li>Rotting vegetation smells;</li> <li>An increase in insect activity due to the processing of organics;</li> </ul> Commented that noise would not be an issue due to the distance of the project and dust would not be a problem due to their building being closed.
Amadon Pty Ltd	18/3/16	5 Davis Road, Wetherill Park, NSW 2164	Targeted interview	Project overview. Comments received regarding project. Stakeholder comments: <ul style="list-style-type: none"> <li>Asked whether asbestos would be included with the processing of C&amp;D waste.</li> <li>Did not see any issues with the project, noted that Nationwide Oil was down the road and there is already an odour in the air.</li> </ul>
Transpacific Industries Group Ltd	18/3/16	6 Davis Road, Wetherill Park, NSW 2164	Targeted interview	Spoke to reception, no one available for comment regarding project, business manager on leave. Business manger contact details provided.
West End Diesel	18/3/16	26 Davis Road, Wetherill Park, NSW 2164	Targeted interview	Project overview. Comments received regarding project. Stakeholder comments: <ul style="list-style-type: none"> <li>Project would be good for business as there would be more trucks on the road which could be serviced etc by West End Diesel</li> </ul>
El Toro Smash and Mechanical Repairs Pty Ltd	18/3/16	Unit 1, 11 Davis Road Wetherill Park, NSW 2164	Targeted interview	Project overview. Comments received regarding project. Stakeholder comments: <ul style="list-style-type: none"> <li>The project might add to parking congestion on the street which is already high.</li> </ul>
Genneral Staircase	18/3/16	12B-13 Davis Road, Wetherill Park, NSW 2164	Targeted interview	Spoke to reception. Manger unavailable. No other employees available for comment. Manager's business card provided, best to contact next week.



Fagersta Steels Pty Ltd	18/3/16	10 Davis Road, Wetherill Park, NSW 2164	Targeted interview	Project overview. Comments received regarding project. Stakeholders comments: <ul style="list-style-type: none"> <li>Did not have any issues with the project. Project factsheet reviewed from previous mailbox drop. Factsheet passed onto other employees, no further comments.</li> </ul>
Austasia Packaging	18/3/16	15 Davis Road, Wetherill Park, NSW 2164	Targeted interview	Project overview. Comments received regarding project. Stakeholders comments: <ul style="list-style-type: none"> <li>No concerns with the project. Noise levels high in the area so not concentrated with noise from the project</li> </ul>
FlameStop	18/3/16	16 Davis Road, Wetherill Park, NSW 2164	Targeted interview	Project overview. Comments received. Stakeholders comments: <ul style="list-style-type: none"> <li>Visibility is low when entering and exiting Flamestop due to the number of trucks entering and exiting Onesteel across the road, trucks also park on the street in front of Flamestop blocking visibility. Customers have also commented it is hard to see the business from the street due to the number of trucks.</li> </ul>
Reliable Powder Coating Pty Ltd	18/3/16	6B Arnott Place, Wetherill Park, NSW 2164	Targeted interview	Project overview. Comments received regarding project. Stakeholders comments: <ul style="list-style-type: none"> <li>Silicon, sand or dust affects their powder coating operations. Would have an issue with the project if silicon, sand, dust etc from the project ends up inside their building. This also applies to the neighbours.</li> </ul>
Towers Transport	18/3/16	71B Elizabeth St, Wetherill Park, NSW 2164	Targeted interview	Spoke to reception. Manger unavailable. No other employees available for comment. Manager's business card provided.
MP Australia and New Zealand	18/3/16	54 Elizabeth St, Wetherill Park, NSW 2164	Targeted interview	Project overview. Comment received regarding project. Stakeholders comments: <ul style="list-style-type: none"> <li>Project will not affect their business.</li> </ul>
LW Reid	18/3/16	46 Elizabeth St, Wetherill Park, NSW 2164	Targeted interview	Project overview. Comments received. Stakeholders comments: <ul style="list-style-type: none"> <li>Traffic is busy along Elizabeth Street. No issues/comments with regards to project.</li> </ul>
Adz Tyre and Battery Pty Ltd	18/3/16	30 Elizabeth St, Wetherill Park, NSW 2164	Targeted interview	Project overview. Comments received. Stakeholders comments: <ul style="list-style-type: none"> <li>No issues with project. Business does have some problems with cars/trucks blocking parts of their driveway. Noted traffic is busy along Elizabeth Street.</li> </ul>
Sydney Decorative Concreters Warehouse Pty	18/3/16	Corner Elizabeth St and Hargraves Place, Wetherill Park, NSW 2164	Targeted interview	Project overview. Project factsheet provided. Will review and provide feedback (if any) via the project website.

Ltd				
Canto Collision Repairs	18/3/16	35 Elizabeth St, Wetherill Park, NSW 2164	Targeted interview	<p>Project overview. Comment received regarding project.</p> <p>Stakeholders comments:</p> <ul style="list-style-type: none"> <li>▪ Traffic heavy along Elizabeth Street. In favour of recycling of materials wherever possible.</li> </ul>
Desideria Wood Fire Pizza	18/3/16	28 Elizabeth St, Wetherill Park, NSW 2164	Targeted interview	<ul style="list-style-type: none"> <li>▪ Project factsheet received. No comments on the project.</li> </ul>
Arrow Locksmiths and Co Pty Ltd	18/3/16	25 Elizabeth St, Wetherill Park, NSW 2164	Targeted interview	<p>Project overview. Comment received regarding project.</p> <p>Stakeholders comments:</p> <ul style="list-style-type: none"> <li>▪ Would like to see the project approved as it may create some more work. Have previously undertaken work for the site.</li> </ul>
PB Packaging	18/3/16	9 Widemere Road, Wetherill Park, NSW 2164	Targeted interview	<p>Spoke to reception. Manager unavailable. No other employees available for comment. Head office contact details provided.</p>

# Project Fact Sheet

## Resource Recovery and Recycling Facility

### About Greenspot

Greenspot is an initiative developed over the past 15 years by Australian recycling company Bettergrow Pty Ltd.

Bettergrow has become one of the most innovative recyclers of organic residuals and by-products in Australia. They offer a range of practical solutions for a variety of organic products that can be converted to products suitable for beneficial re-use in a range of markets.

In 1995 Bettergrow commenced the innovative yet challenging task of retrofitting significant infrastructure and property assets around Australia that were either underutilised or not utilised at all.

The Greenspot initiative was subsequently created to utilise Bettergrow's existing recycling industry expertise to rebrand or reinvent such underutilised assets as resource recovery centres.



### Project Summary

Greenspot is proposing to undertake the development and operation of a resource recovery and recycling facility at 24 Davis Road, Wetherill Park in NSW.

The proposed facility will primarily accept up to 200,000 tpa of the following waste streams:

- 🌱 Hydro-excavation and drill muds/fluids;
- 🌱 Commingled construction and demolition (C&D) waste; and
- 🌱 Garden organics, commingled food and garden organics and food waste

The recovered resources will be transferred either directly to end markets or to other facilities or processors for value adding to achieve maximum value for the beneficial use.

The facility is also proposed to act as a distribution centre for the distribution and marketing of bulk landscape supplies including barks, sands and aggregates.

The proposed facility will utilise existing onsite infrastructure where possible.

New site infrastructure will include an all-weather shelter for C&D sorting, enclosed building for the sorting of food, garden, and organic wastes, hydro-excavation and drill mud settling bays, storage and settling tanks, weigh bridge, and gross pollutant trap.

### Indicative Project Timeline





# Project Fact Sheet

## Resource Recovery and Recycling Facility

### Site Locality



### Why is the facility needed?

The proposed facility will further assist the NSW Government to achieve its stated goals to increase the diversion of waste from landfill disposal through the development of strategic infrastructure and processing opportunities.



### Employment and Economic Opportunities

The proposed facility will provide many benefits to businesses in the greater Sydney region and the surrounding community.

The capital cost including site upgrade, buildings, air scrubber plant and equipment is estimated to be between \$6 and \$7 Million.

The facility will generate in the order of \$20 Million per annum when fully operational considering the estimated turnover for the facility.

The Project will also provide jobs for the local area with 29 staff on roster when fully operational.

### For more Information

Greenspot will be holding an information session that will outline the Project in more detail. Representatives from both Greenspot and the environmental consultancy firm who are preparing the EIS will be on hand to answer any questions you may have.

The Project information session will be held on:

- 🌱 Date: Thursday 25 February 2016
- 🌱 Time: 2.00pm to 4.00pm
- 🌱 Venue: 24 Davis Road, Wetherill Park NSW

If you have any questions regarding the project please call during business hours, email the project team, or visit the website below:

- 🌱 John Vyse: ☎ 0403 996 518 ✉ [john@bettergrow.com.au](mailto:john@bettergrow.com.au)
- 🌱 Shaun Smith: ☎ 0419 715 665 ✉ [shaun.smith@rpsgroup.com.au](mailto:shaun.smith@rpsgroup.com.au)
- 🌱 Website: [www.bettergrow.com.au](http://www.bettergrow.com.au)

The community will also have an opportunity to have a say during the formal public exhibition period after a detailed proposal is submitted to the Department of Planning and Environment.



# Feedback Form

## Resource Recovery and Recycling Facility

### Feedback On The Proposed Project

Greenspot invites comments from interested persons or groups regarding potential impacts and benefits of the Greenspot Resource Recovery and Recycling Facility. Please take the time to review the enclosed Project Fact Sheet, fill out the feedback form below and return it to us via the reply paid envelope, alternatively you can also submit your responses by completing an online form via our website: [www.bettergrow.com.au](http://www.bettergrow.com.au).

Please note your individual comments will remain confidential, with overall results reported in the Environmental Impact Statement (EIS) for the Project.

1. What are your general thoughts on the proposed Project?

---

---

---

---

---

2. Do you have any comments on the Preliminary Environmental Assessment for the Project (PEA). The PEA can be found at [http://majorprojects.planning.nsw.gov.au/index.pl?action=view\\_job&job\\_id=7401](http://majorprojects.planning.nsw.gov.au/index.pl?action=view_job&job_id=7401)

---

---

---

---

---

3. What issues are most important to you?

- |   |   |
|---|---|
| <input type="checkbox"/> Social and Economic      | <input type="checkbox"/> Noise and Vibration    |
| <input type="checkbox"/> Surface Water Management | <input type="checkbox"/> Groundwater Management |
| <input type="checkbox"/> Traffic and Transport    | <input type="checkbox"/> Air Quality and Odour  |
| <input type="checkbox"/> Contamination and Soils  | <input type="checkbox"/> Ecology                |
| <input type="checkbox"/> Heritage                 | <input type="checkbox"/> Waste Management       |
| <input type="checkbox"/> Visual Amenity           | <input type="checkbox"/> Other.....             |

4. If you would like to receive further information about the Project, please provide your contact details below. Your details will remain confidential and will be used for distribution of Project information only. You can also visit our website for Project updates.

Name..... Organisation (if applicable).....

Postal Address..... Email.....



**STAKEHOLDER DETAILS**

Name (contactee)	
Organisation (if applicable )	
Address	
Phone Number	
Date Contacted	
Contact Specifics (phone, email, letter, meeting, door knock, etc)	
Initiated by whom (project staff member /stakeholder)	

**SUMMARY OF CONSULTATION**

--

**STAKEHOLDER COMMENTS**

--

**RESPONSE / ACTIONS TAKEN**

--

**PROJECT REPRESENTATIVE**

Name / Title	
Project	
Date	
Signature	

Correspondance

---

**Newcastle Office**

Ground Floor, 241 Denison Street, Broadmeadow, NSW Australia 2292

PO Box 428, Hamilton, NSW Australia 2303

T +61 2 4940 4200 F +61 2 4961 6794 E [newcastle@rpsgroup.com.au](mailto:newcastle@rpsgroup.com.au) W [rpsgroup.com.au](http://rpsgroup.com.au)

**Our Ref:** PR127695  
**Date:** Friday 3 June 2016

Attn: [REDACTED]  
Industry Assessments  
Department of Planning and Environment  
GPO Box 39  
SYDNEY NSW 2001

**Via:** Email

Dear David

**RE: PROPOSED GREENSPOT RESOURCE RECOVERY AND RECYCLING FACILITY –  
SSD7401**

I make reference to the subject Project for the construction and operation of a Resource Recovery and Recycling Facility at 24 Davis Road, Wetherill Park, NSW. RPS Australia East Pty Ltd (RPS) has been engaged by Bettergrow (the Proponent) to prepare and project manage the Environmental Impact Statement for the Project.

**Introduction**

The DP&E issued Secretary's Environmental Assessment Requirements (SEARs) for the Project on 16 December 2015. Since that time Bettergrow and RPS have been working through the operational aspects of the proposed development and preparing an EIS. Through this process, several aspects of the proposed Development have been revised which has lead to some minor changes to the original Project. The purpose of this letter is to advise DP&E of these minor changes and to seek confirmation that no alteration to the SEARs will be required.

**Original Project**

As detailed in the Preliminary Environmental Assessment (PEA), the original Project was designed to process up to 200,000 tonnes per annum (tpa) of material from the following sources:

- Hydro-excavation and drill muds/fluids for consolidation and removal from site for use as structural fill or as a feedstock within a soil conditioner and compost manufacturing;
- Commingled construction and demolition (C&D) waste;
- Bulk landscaping supplies for distribution into the surrounding areas; and
- Garden organics, commingled food and garden organics and food waste.

The original Project was proposing to process the following amounts of waste from each source:

- 30,000tpa of hydro-excavation and drill mud/fluids;



- 30,000tpa of commingled C&D waste;
- 40,000 tpa of bulk landscaping supplies; and
- 100,000 tpa of garden organics, commingled food and garden organics and food waste.

The original Project layout is shown attached as **Figure 1**.

### **Revised Project**

The revised Project is designed to still process up to 200,000 tonnes per annum (tpa) of material, however the sources have been modified to the following:

- Hydro-excavation and drill muds/fluids for consolidation and removal from site for use as structural fill or as a feedstock within a soil conditioner and compost manufacturing;
- Bulk landscaping supplies for distribution into the surrounding areas; and
- Garden organics, commingled food and garden organics and food waste.

The revised Project is proposing to process the following amounts of waste from each source:

- 60,000 tpa of hydro-excavation and drill mud/fluids;
- 40,000 tpa of bulk landscaping supplies; and
- 100,000 tpa of garden organics, commingled food and garden organics and food waste.

The revised Project layout is shown attached as **Figure 2**.

### **Project Modifications**

The modifications to the original Project include:

- Removal of C&D receival and processing at the site;
- Increasing the receival amount of hydro-excavation and drill muds/fluids from 30,000tpa to 60,000tpa;
- Movement of the hydro-excavation and drill muds/fluids processing from the mid level of the site to the lower level;
- Separation of the garden organics processing from the food processing through the addition of a separate food de-packaging building whilst still retaining the original total tonnage;
- Addition of product bays on the lower level; and
- Installation of a second weigh bridge for outgoing loads.

### **Benefits**

Several benefits will result from the changes to the Project, which include:

- A reduction in noise and dust generating activities;
- A reduction in the overall number of truck movements to the facility;
- Fully enclosed buildings on the upper level and partially enclosed building on the lower level to further mitigate noise, dust, and odour impacts; and
- Increased reclamation and recycling of contaminated hydro-excavation muds/fluids.

## Conclusions

As detailed in this letter, the changes to the Project are relatively minor and provide an overall improvement with regard to environmental impact when compared to the original Project. The reduction in truck movements, increased recycling of muds and fluids, and the containment of recycling process within enclosed buildings will greatly reduce the potential impacts to the surrounding receivers and environment.

We trust this information is sufficient for your purposes, however should you require any further details or clarification, please do not hesitate to contact the writer on 02 4940 4226.

Yours sincerely

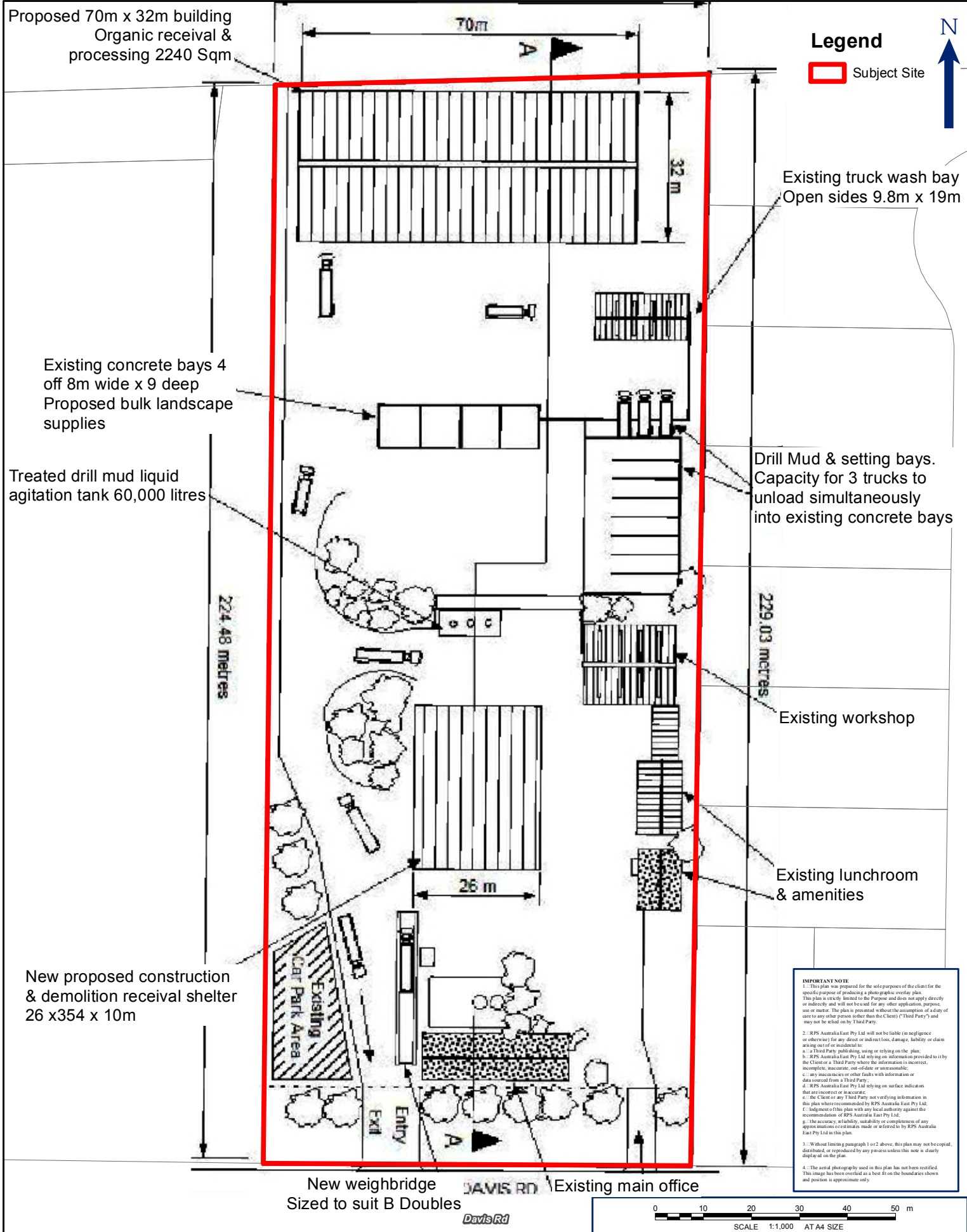
**RPS**

A handwritten signature in black ink, appearing to read 'S. Smith'.

Shaun Smith  
Principal Environmental Planner

cc: John Vyse, Bettergrow

Encl: Figure 1 - Original Site Layout  
Figure 2 - Revised Site Layout



**Figure 1: Original Site Layout**

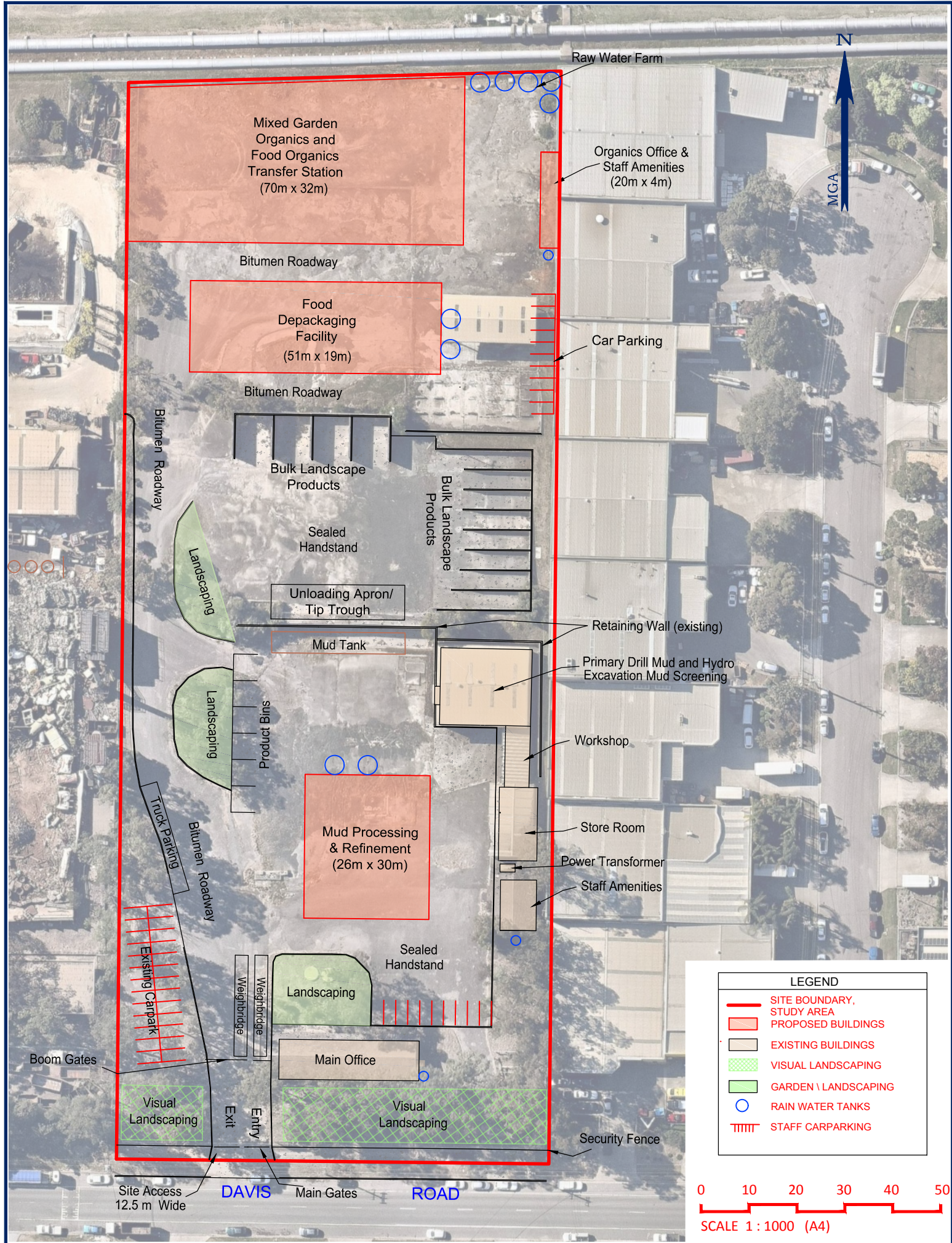
LOCATION: Wetherill Park	DATUM: GDA94
JOB NO.: PR127695	PROJECTION: MGA Zone 56
PURPOSE: PEA	Data Sources: RPS Client
Technician: Natalie Wood	Date: 20/11/2015

CLIENT: Better Grow

RPS AUSTRALIA EAST PTY LTD (ABN 44 140 292 762)  
241 DENISON STREET BROADMEADOW PO BOX 428 HAMILTON NSW 2303  
T: 02 4940 4200 F: 02 4961 6794 www.rpsgroup.com.au

**RPS**





TITLE: Figure 2: Revised Site Layout

LOCATION: WETHERILL PARK

DATUM: GDA 94  
PROJECTION: MGA ZONE 56

DATE: 16-02-2016  
PURPOSE: PEA

CAD REF: J:\JOBS\127K\127695 Wetherill Park\10 - Drafting\  
VERSION : Wetherill Park - Conceptual Site Layout

CLIENT: BETTER GROW  
JOB REF: PR127695

RPS AUSTRALIA EAST PTY LTD (ABN 44 140 292 762)  
241 DENISON STREET BROADMEADOW PO BOX 428 HAMILTON NSW 2303  
T: 02 4940 4200 F: 02 4961 6794 www.rpsgroup.com.au

RPS



# BRIEFING NOTE

<b>To:</b> [REDACTED]	<b>Company:</b> EPA
<b>From:</b> John Vyse	<b>Company:</b> Bettergrow Pty Ltd
<b>Subject:</b> Proposed odour control – SSD 7401 Davis Rd, Wetherill Park	<b>Date:</b> 23 November 2016

Dear [REDACTED]

The following briefing note details the odour treatment technology concept that is to be adopted within the proposed Organics Building at the Proposed Greenspot Recycling and Resource Recovery Facility located at 24 Davis Road Wetherill Park, Sydney. It was considered prudent to advise EPA of Greenspot's current position in relation to the adopted long term odour management for the proposed facility prior to odour dispersion modelling being undertaken. We believe that the system that is to be implemented has some advantages which will provide EPA comfort that odour will be abated.

It is to be noted that the predominant odour that will be generated from the food and garden organics (FOGO) received for processing will be volatile organic compounds (VOCs) with some minor amounts of sulphidic based compounds. Because the material will be relatively fresh with a maximum holding time on site of no more than 24 hours, the instances of pungent ammonia and amine releases would be highly unlikely to rare. It is anticipated that garden organics will be the predominant volume of organic material received representing approximately 80% of the incoming organics stream.

After a technical review of various pieces of technology available on the market and there versatility in operation and ongoing maintenance costs, Greenspot has opted for the operation of a network of high grade activated carbon filters incorporating an alkaline layer to reduce instances of sulphidic compound release.

To ensure 1 air exchange / hour for the Organics Building, 6 activated carbon units will be installed at strategic locations to ensure that negative pressure inside the building occurs, particularly when doors are opened for delivery and removal of processed FOGO. In combination of operation, 5,400 litres / second of building air will be treated.

Each activated carbon filter will be fitted with a detector that will determine breakthrough of odourants when VOC concentrations equals 2 ppm.

High grade activated carbon will be stored on site so that filters can be changed immediately upon the detector indicating that a change is required.

From the amount of material that could be stored as an absolute worst case scenario, approximately 14,000 odour units will be generated, based on a conservative SOER of 11 OU/m<sup>2</sup>/s. It is anticipated that whilst breakthrough does not occur, and that negative pressure is maintained, that the efficiency of treatment will

be 99.9%. With 0.1 % distributed between the 6 release points it is anticipated that 2.3 odour units / second would be released from each activated carbon cylinder.

Further to the above, Greenspot will utilise biological inoculums that will prevent organic matter putrefying and thus creating sulphidic based compounds. Organic material received will be sprayed with the recommended dose to induce preservation for the 24 hours it remains on site for processing and dispatch.

The inoculum is a molasses based product that has been formulated with specific micro-organisms that exist in a symbiotic relationship whereby odourous compounds are mineralised thus preventing mal-odour emissions.

We believe that the design is robust from the point of view that whilst one filter is being replaced with high grade media, the remaining five units will be operating as opposed to a scenario where if the operation of one unit of a certain type of technology was temporarily suspended, no redundancy would be present. We believe the proposed network demonstrates best practice environmental management.

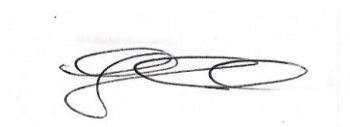
I can also advise that whilst the design capacity being applied for equates to 100,000 tonnes of FOGO / annum delivered, Greenspot will not start immediately at this rate, but rather, will take the time to ramp up the facility in stages to ensure that the combined air treatment train is capable of abating odour from the amount of material received at any one time as the facility continues to grow to its design capacity.

Due to the design being modular, if it was determined at some stage after commencement of the activity a further unit is required to be installed to meet 3.5 odour units at the boundary of the facility, then this would be done. This would be based in part on how many breakthrough events occur through filters during a set period of time of observation and also via air sampling and testing.

As you can appreciate, selecting the most efficient and cost effective piece of technology whilst having built in fail safes does take some time to establish, but we feel that the above concept will effectively abate odour from the proposed building.

I would very much appreciate your view in relation the above concept so that we could expedite air dispersion modelling to support the submission of the above in the near future. Should you require anything immediately, please contact me on my mobile telephone number 0403996518

Yours Sincerely

A handwritten signature in black ink, appearing to read 'John Vyse', is written over a light blue rectangular background.

John Vyse