

Attachment C

Signage Zones

Level 2 Pier 8/9 23 Hickson Road Sydney NSW Australia 2000
GPO Box 5487 Sydney NSW Australia 2001
T +61 2 9101 2000 W hassellstudio.com
Architecture Interior Design Landscape Architecture Planning Urban Design
Australia China Hong Kong Singapore United Kingdom

HASSELL Limited
ABN 24 007 711 435

Nominated architects NSW: Tony Grist 5350 Ross de la Motte 7398 Matthew Pullinger 6226

THE RIBBON HOTEL, SERVICED APARTMENTS AND RETAIL

Signage Matrix

19/April/2013

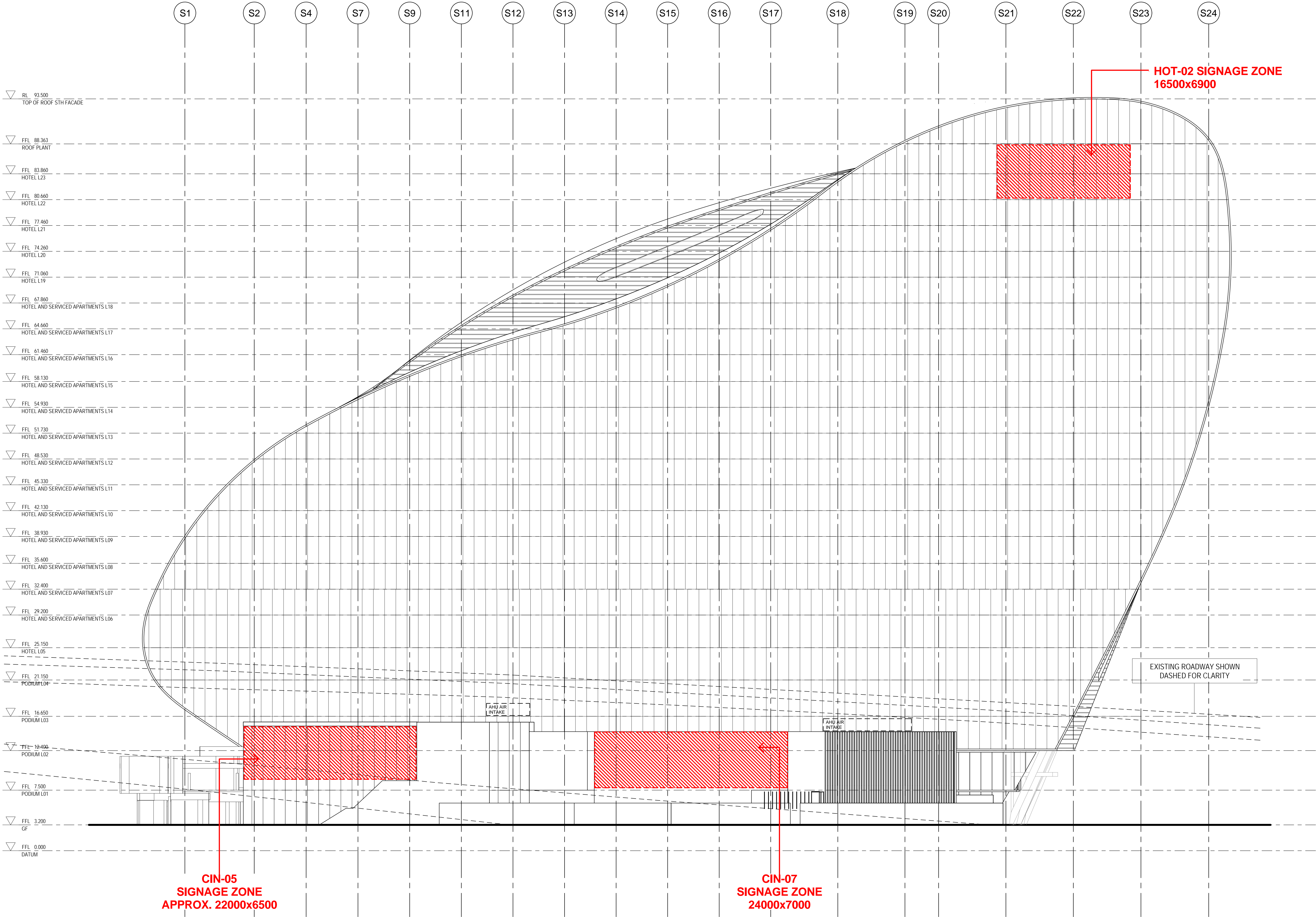
Revision A

Issued for Information

Code	Programme	Type	Location (aspect)	Location	Signage Zone Size (mm)	Purpose
CIN-01	Cinema	Backlit, logo	West	Road	7500x2000	Primary cinema signage
CIN-02	Cinema	Backlit, logo	West	Pedestrian	5400x1200	Secondary cinema signage
CIN-03	Cinema	LED, animated	West	Pedestrian	18000x900	"Now Showing" animated advertisement
CIN-05	Cinema	Semi-transparent decal	West	Road	22000x6500	Cinema lobby glazing visible from Freeway exit
CIN-06	Cinema	Backlit, poster	West	Pedestrian	3000x7000	"Now Showing" poster advertisement
CIN-07	Cinema	Backlit, poster	South	Pedestrian	24000x7000	"Now Showing" poster advertisement
GEN-01	General	LED, video screen	West	Pedestrian	9000x5060	Public video screen
HOT-01	Hotel	Backlit, logo	North	Sky	16500x6400	Primary hotel sky signage
HOT-02	Hotel	Backlit, logo	South	Sky	16500x6900	Primary hotel sky signage
HOT-03	Hotel	Backlit, logo	East	Pedestrian	9000x9000	Primary hotel entry signage
RET-02	Retail Tenancy	Backlit, logo	North	Pedestrian	900 HIGH, LENGTH OF SHOPFRONT	Retail shopfront signage
RET-03	Retail Tenancy	Backlit, logo	North	Pedestrian	900 HIGH, LENGTH OF SHOPFRONT	Retail shopfront signage
RET-04	Retail Tenancy	Backlit, logo	North	Pedestrian	900 HIGH, LENGTH OF SHOPFRONT	Retail shopfront signage
RET-05	Retail Tenancy	Backlit, logo	North	Pedestrian	900 HIGH, LENGTH OF SHOPFRONT	Retail shopfront signage
RET-06	Retail Tenancy	Backlit, logo	East	Pedestrian	900 HIGH, LENGTH OF SHOPFRONT	Retail shopfront signage
RET-07	Retail Tenancy	Backlit, logo	East	Pedestrian	900 HIGH, LENGTH OF SHOPFRONT	Retail shopfront signage
RET-08	Retail Tenancy	Backlit, logo	East	Pedestrian	900 HIGH, LENGTH OF SHOPFRONT	Retail shopfront signage
RET-09	Retail Tenancy	Backlit, logo	East	Pedestrian	900 HIGH, LENGTH OF SHOPFRONT	Retail shopfront signage
TEN-01	Primary Tenant/Sponsor	Backlit, logo	West	Road	18700x3500	Primary tenant/sponsor advertisement
TEN-02	Primary Tenant/Sponsor	Backlit, logo	West	Pedestrian	2200x2200	Secondary tenant/sponsor advertisement

HASSELL

SIGNAGE TYPES AND LOCATIONS
SOUTH ELEVATION



DRAWING NO.: SK026.1
DATE: 18 APRIL 2016
BASED ON: ARC-HSL-DD-1150 Rev E

DRAWING TITLE: SIGNAGE TYPES & LOCATIONS
SOUTH ELEVATION

REFERENCE MAP

0 4 8 16m
1:200

NOTES

- DO NOT SCALE DRAWINGS. WRITTEN DIMENSIONS GOVERN.
- ALL DIMENSIONS ARE IN MILLIMETRES UNLESS NOTED OTHERWISE.
- ALL DIMENSIONS SHALL BE VERIFIED ON SITE BEFORE PROCEEDING WITH THE WORK. HASSELL SHALL BE NOTIFIED IN WRITING OF ANY DISCREPANCIES.
- THIS DRAWING MUST BE READ IN CONJUNCTION WITH ALL RELEVANT CONTRACTS, SPECIFICATIONS AND DRAWINGS.

© COPYRIGHT OF THIS DRAWING IS VESTED IN HASSELL. LTD.
2015 HASSELL. LTD.

THIS DRAWING IS AN UNCONTROLLED COPY, UNLESS NOTED OTHERWISE.

FOR INFORMATION ONLY

REV	DESCRIPTION	DATE
1	AMENDED DEVELOPMENT APPLICATION	15/07/15
2	AMENDED DEVELOPMENT APPLICATION	22/07/15
3	AMENDED DEVELOPMENT APPLICATION	22/07/15
4	AMENDED DEVELOPMENT APPLICATION	22/07/15
5	DEVELOPMENT APPLICATION	22/07/15
6	DEVELOPMENT APPLICATION	22/07/15
7	FINAL DRAFT	25/07/15
8	ISSUED FOR INFORMATION	15/07/16

ARCHITECT

HASSELL Limited ABN 007 711 435
LEVEL 2, PIER 8/9,
23 HICKSON ROAD
SYDNEY NSW 2000 AUSTRALIA
SYDNEY@HASSELLSTUDIO.COM
T +61 2 9101 2000 F +61 2 9101 2100

HASSELL

CLIENT

Grocon

PROJECT

THE RIBBON HOTEL,
SERVICED APARTMENTS AND RETAIL

31 WHEAT ROAD, SYDNEY

DRAWING TITLE

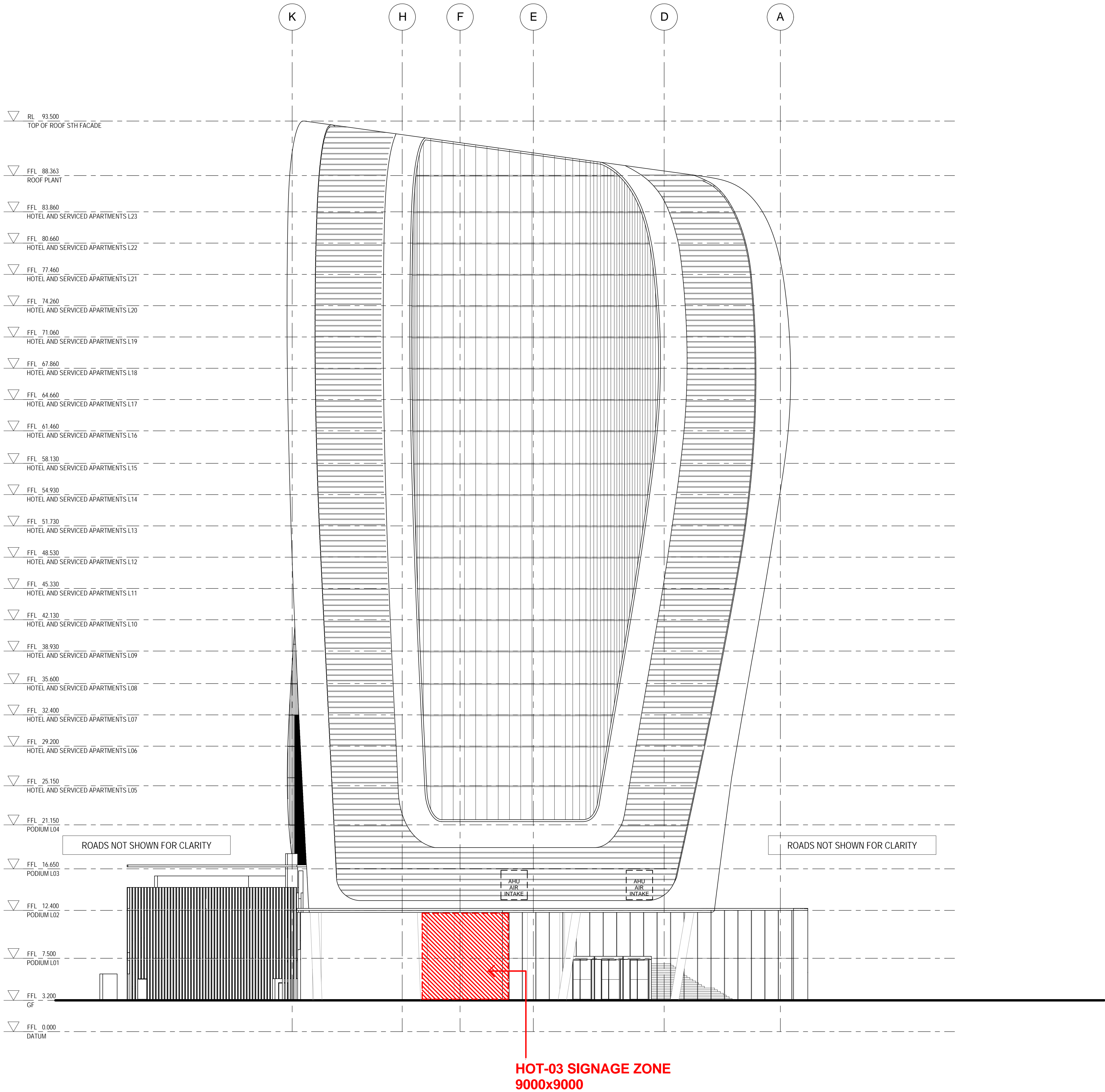
GA ELEVATIONS - SHEET 1

FOR APPROVAL

SCALE	DATE	DESIGNED	CHECKED	APPROVED
1:200	18/04/2016	CW		

PROJECT NUMBER: ARC-HSL-DD-M00050
DRAWING NUMBER: 1
REV: E

SIGNAGE TYPES AND LOCATIONS
EAST ELEVATION



DRAWING NO.: SK026.2
DATE: 18 APRIL 2016
BASED ON: ARC-HSL-DD-1151 Rev E

DRAWING TITLE: SIGNAGE TYPES & LOCATIONS
EAST ELEVATION

REFERENCE MAP

0 4 8 16m
1:200

NOTES

- DO NOT SCALE DRAWINGS. WRITTEN DIMENSIONS GOVERN.
- ALL DIMENSIONS ARE IN MILLIMETRES UNLESS NOTED OTHERWISE.
- ALL DIMENSIONS SHALL BE VERIFIED ON SITE BEFORE PROCEEDING WITH THE WORK. HASSELL SHALL BE NOTIFIED IN WRITING OF ANY DISCREPANCIES.
- THIS DRAWING MUST BE READ IN CONJUNCTION WITH ALL RELEVANT CONTRACTS, SPECIFICATIONS AND DRAWINGS.

© COPYRIGHT OF THIS DRAWING IS VESTED IN HASSELL, LTD.
2015 HASSELL, LTD.

THIS DRAWING IS AN UNCONTROLLED COPY, UNLESS NOTED OTHERWISE.

FOR INFORMATION ONLY

REV	DESCRIPTION	DATE
E	AMENDED DEVELOPMENT APPLICATION	15/07/15
D	AMENDED DEVELOPMENT APPLICATION	23/07/15
C	AMENDED DEVELOPMENT APPLICATION	23/07/15
B	DEVELOPMENT APPLICATION	23/07/15
A	FINAL DRAFT	23/07/15
	ISSUED FOR INFORMATION	15/07/15

ARCHITECT

HASSELL Limited ABN 007 711 435
LEVEL 2, PIER 8/9,
23 HICKSON ROAD
SYDNEY NSW 2000 AUSTRALIA
SYDNEY@HASSELLSTUDIO.COM
T +61 2 9101 2000 F +61 2 9101 2100

HASSELL

RUSSELL & GEORGE

pmdl

CLIENT

Grocon

PROJECT

THE RIBBON HOTEL,
SERVICED APARTMENTS AND RETAIL

31 WHEAT ROAD, SYDNEY

DRAWING TITLE

GA ELEVATIONS - SHEET 2

FOR APPROVAL

FOR INFORMATION ONLY

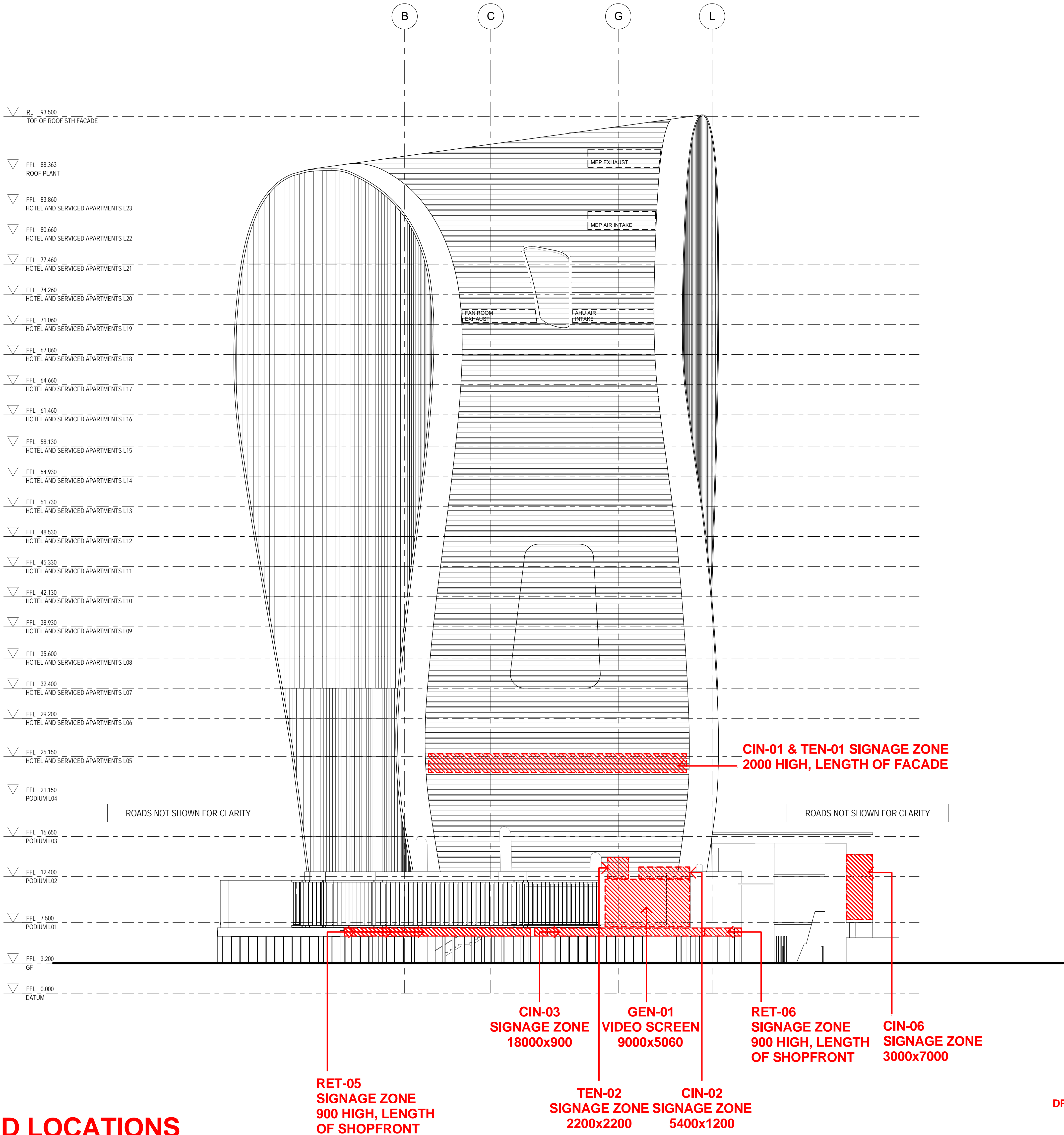
PROJECT NUMBER: ARC-HSL-DD-1151

DRAWING NUMBER: E

4/10/2016 10:15:19 AM

Original Sheet Size B1-1000 x 707mm

SIGNAGE TYPES AND LOCATIONS
WEST ELEVATION



DRAWING NO.: SK026.3
DATE: 18 APRIL 2016
BASED ON: ARC-HSL-DD-1152 Rev E

DRAWING TITLE: SIGNAGE TYPES & LOCATIONS
WEST ELEVATION

REFERENCE MAP

0 4 8 16m
1:200

NOTES

- DO NOT SCALE DRAWINGS. WRITTEN DIMENSIONS GOVERN.
- ALL DIMENSIONS ARE IN MILLIMETRES UNLESS NOTED OTHERWISE.
- ALL DIMENSIONS SHALL BE VERIFIED ON SITE BEFORE PROCEEDING WITH THE WORK. HASSELL SHALL BE NOTIFIED IN WRITING OF ANY DISCREPANCIES.
- THIS DRAWING MUST BE READ IN CONJUNCTION WITH ALL RELEVANT CONTRACTS, SPECIFICATIONS AND DRAWINGS.

© COPYRIGHT OF THIS DRAWING IS VESTED IN HASSELL. LTD.
2015 HASSELL. LTD.

THIS DRAWING IS AN UNCONTROLLED COPY, UNLESS NOTED OTHERWISE.

FOR INFORMATION ONLY

REV	DESCRIPTION	DATE
E	APPROVED DEVELOPMENT APPLICATION	23/03/16
D	APPROVED DEVELOPMENT APPLICATION	23/03/16
C	APPROVED DEVELOPMENT APPLICATION	23/03/16
B	DEVELOPMENT APPLICATION	23/03/16
A	FINAL DRAFT	23/03/16
	ISSUED FOR INFORMATION	15/03/16

ARCHITECT
HASSELL Limited ABN 007 711 435
LEVEL 2, PIER 8/9,
23 HICKSON ROAD
SYDNEY NSW 2000 AUSTRALIA
SYDNEY@HASSELLSTUDIO.COM
T +61 2 9101 2000 F +61 2 9101 2100

HASSELL

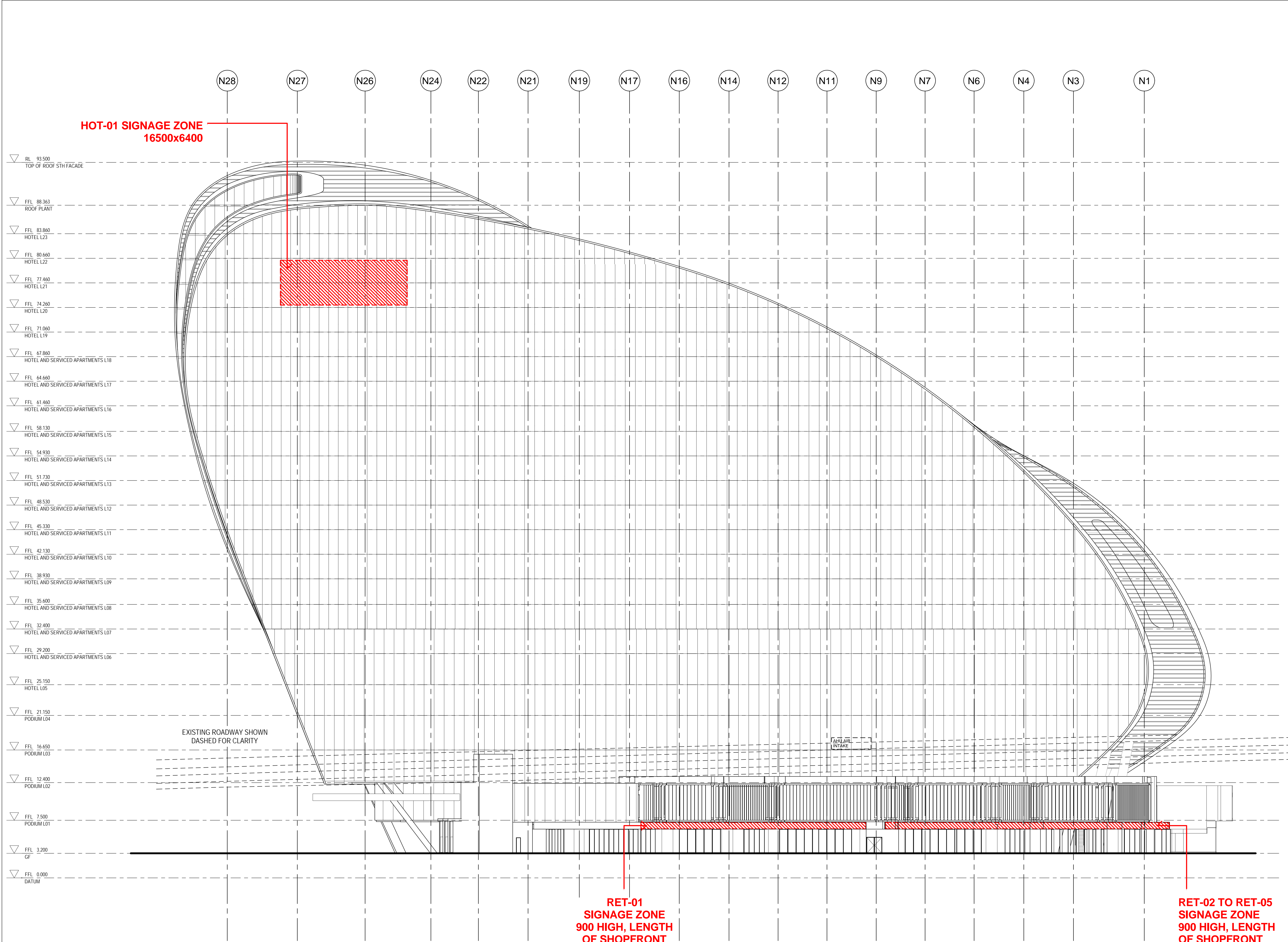
RUSSELL & GEORGE pmdl

CLIENT
Grocon

PROJECT
THE RIBBON HOTEL,
SERVICED APARTMENTS AND RETAIL
31 WHEAT ROAD, SYDNEY

DRAWING TITLE
GA ELEVATIONS - SHEET 3

FOR APPROVAL			
SCALE 1:200	DATE 18/04/16	DESIGNED BY	APPROVED BY
FOR INFORMATION ONLY			
PROJECT NUMBER	DRAWING NUMBER	REV	
AD0044005	ARC-HSL-DD-M0152	E	

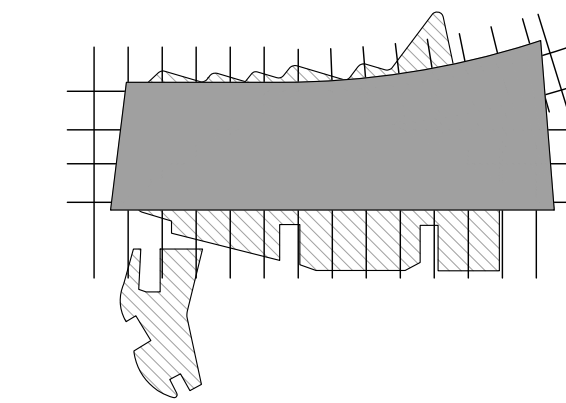


SIGNAGE TYPES AND LOCATIONS NORTH ELEVATION

DRAWING NO.: SK026.4
DATE: 18 APRIL 2016
BASED ON: ARC-HSL-DD-1153 Rev E

DRAWING TITLE: SIGNAGE TYPES & LOCATIONS
NORTH ELEVATION

REFERENCE MAP



0 4 8 16m
1:200

NOTES

- DO NOT SCALE DRAWINGS. WRITTEN DIMENSIONS GOVERN.
- ALL DIMENSIONS ARE IN MILLIMETRES UNLESS NOTED OTHERWISE.
- ALL DIMENSIONS SHALL BE VERIFIED ON SITE BEFORE PROCEEDING WITH THE WORK. HASSELL SHALL BE NOTIFIED IN WRITING OF ANY DISCREPANCIES.
- THIS DRAWING MUST BE READ IN CONJUNCTION WITH ALL RELEVANT CONTRACTS, SPECIFICATIONS AND DRAWINGS.

© COPYRIGHT OF THIS DRAWING IS VESTED IN HASSELL. LTD.
2015 HASSELL. LTD.

THIS DRAWING IS AN UNCONTROLLED COPY, UNLESS NOTED OTHERWISE.

FOR INFORMATION ONLY		
REV	DESCRIPTION	DATE
1	AMENDED DEVELOPMENT APPLICATION	25/07/15
2	AMENDED DEVELOPMENT APPLICATION	25/07/15
3	AMENDED DEVELOPMENT APPLICATION	25/07/15
4	AMENDED DEVELOPMENT APPLICATION	25/07/15
5	AMENDED DEVELOPMENT APPLICATION	25/07/15
6	AMENDED DEVELOPMENT APPLICATION	25/07/15
7	AMENDED DEVELOPMENT APPLICATION	25/07/15
8	AMENDED DEVELOPMENT APPLICATION	25/07/15
9	AMENDED DEVELOPMENT APPLICATION	25/07/15
10	AMENDED DEVELOPMENT APPLICATION	25/07/15
11	AMENDED DEVELOPMENT APPLICATION	25/07/15
12	AMENDED DEVELOPMENT APPLICATION	25/07/15
13	AMENDED DEVELOPMENT APPLICATION	25/07/15
14	AMENDED DEVELOPMENT APPLICATION	25/07/15
15	AMENDED DEVELOPMENT APPLICATION	25/07/15
16	AMENDED DEVELOPMENT APPLICATION	25/07/15
17	AMENDED DEVELOPMENT APPLICATION	25/07/15
18	AMENDED DEVELOPMENT APPLICATION	25/07/15
19	AMENDED DEVELOPMENT APPLICATION	25/07/15
20	AMENDED DEVELOPMENT APPLICATION	25/07/15
21	AMENDED DEVELOPMENT APPLICATION	25/07/15
22	AMENDED DEVELOPMENT APPLICATION	25/07/15
23	AMENDED DEVELOPMENT APPLICATION	25/07/15
24	AMENDED DEVELOPMENT APPLICATION	25/07/15
25	AMENDED DEVELOPMENT APPLICATION	25/07/15
26	AMENDED DEVELOPMENT APPLICATION	25/07/15
27	AMENDED DEVELOPMENT APPLICATION	25/07/15
28	AMENDED DEVELOPMENT APPLICATION	25/07/15
29	AMENDED DEVELOPMENT APPLICATION	25/07/15
30	AMENDED DEVELOPMENT APPLICATION	25/07/15
31	AMENDED DEVELOPMENT APPLICATION	25/07/15
32	AMENDED DEVELOPMENT APPLICATION	25/07/15
33	AMENDED DEVELOPMENT APPLICATION	25/07/15
34	AMENDED DEVELOPMENT APPLICATION	25/07/15
35	AMENDED DEVELOPMENT APPLICATION	25/07/15
36	AMENDED DEVELOPMENT APPLICATION	25/07/15
37	AMENDED DEVELOPMENT APPLICATION	25/07/15
38	AMENDED DEVELOPMENT APPLICATION	25/07/15
39	AMENDED DEVELOPMENT APPLICATION	25/07/15
40	AMENDED DEVELOPMENT APPLICATION	25/07/15
41	AMENDED DEVELOPMENT APPLICATION	25/07/15
42	AMENDED DEVELOPMENT APPLICATION	25/07/15
43	AMENDED DEVELOPMENT APPLICATION	25/07/15
44	AMENDED DEVELOPMENT APPLICATION	25/07/15
45	AMENDED DEVELOPMENT APPLICATION	25/07/15
46	AMENDED DEVELOPMENT APPLICATION	25/07/15
47	AMENDED DEVELOPMENT APPLICATION	25/07/15
48	AMENDED DEVELOPMENT APPLICATION	25/07/15
49	AMENDED DEVELOPMENT APPLICATION	25/07/15
50	AMENDED DEVELOPMENT APPLICATION	25/07/15
51	AMENDED DEVELOPMENT APPLICATION	25/07/15
52	AMENDED DEVELOPMENT APPLICATION	25/07/15
53	AMENDED DEVELOPMENT APPLICATION	25/07/15
54	AMENDED DEVELOPMENT APPLICATION	25/07/15
55	AMENDED DEVELOPMENT APPLICATION	25/07/15
56	AMENDED DEVELOPMENT APPLICATION	25/07/15
57	AMENDED DEVELOPMENT APPLICATION	25/07/15
58	AMENDED DEVELOPMENT APPLICATION	25/07/15
59	AMENDED DEVELOPMENT APPLICATION	25/07/15
60	AMENDED DEVELOPMENT APPLICATION	25/07/15
61	AMENDED DEVELOPMENT APPLICATION	25/07/15
62	AMENDED DEVELOPMENT APPLICATION	25/07/15
63	AMENDED DEVELOPMENT APPLICATION	25/07/15
64	AMENDED DEVELOPMENT APPLICATION	25/07/15
65	AMENDED DEVELOPMENT APPLICATION	25/07/15
66	AMENDED DEVELOPMENT APPLICATION	25/07/15
67	AMENDED DEVELOPMENT APPLICATION	25/07/15
68	AMENDED DEVELOPMENT APPLICATION	25/07/15
69	AMENDED DEVELOPMENT APPLICATION	25/07/15
70	AMENDED DEVELOPMENT APPLICATION	25/07/15
71	AMENDED DEVELOPMENT APPLICATION	25/07/15
72	AMENDED DEVELOPMENT APPLICATION	25/07/15
73	AMENDED DEVELOPMENT APPLICATION	25/07/15
74	AMENDED DEVELOPMENT APPLICATION	25/07/15
75	AMENDED DEVELOPMENT APPLICATION	25/07/15
76	AMENDED DEVELOPMENT APPLICATION	25/07/15
77	AMENDED DEVELOPMENT APPLICATION	25/07/15
78	AMENDED DEVELOPMENT APPLICATION	25/07/15
79	AMENDED DEVELOPMENT APPLICATION	25/07/15
80	AMENDED DEVELOPMENT APPLICATION	25/07/15
81	AMENDED DEVELOPMENT APPLICATION	25/07/15
82	AMENDED DEVELOPMENT APPLICATION	25/07/15
83	AMENDED DEVELOPMENT APPLICATION	25/07/15
84	AMENDED DEVELOPMENT APPLICATION	25/07/15
85	AMENDED DEVELOPMENT APPLICATION	25/07/15
86	AMENDED DEVELOPMENT APPLICATION	25/07/15
87	AMENDED DEVELOPMENT APPLICATION	25/07/15
88	AMENDED DEVELOPMENT APPLICATION	25/07/15
89	AMENDED DEVELOPMENT APPLICATION	25/07/15
90	AMENDED DEVELOPMENT APPLICATION	25/07/15
91	AMENDED DEVELOPMENT APPLICATION	25/07/15
92	AMENDED DEVELOPMENT APPLICATION	25/07/15
93	AMENDED DEVELOPMENT APPLICATION	25/07/15
94	AMENDED DEVELOPMENT APPLICATION	25/07/15
95	AMENDED DEVELOPMENT APPLICATION	25/07/15
96	AMENDED DEVELOPMENT APPLICATION	25/07/15
97	AMENDED DEVELOPMENT APPLICATION	25/07/15
98	AMENDED DEVELOPMENT APPLICATION	25/07/15
99	AMENDED DEVELOPMENT APPLICATION	25/07/15
100	AMENDED DEVELOPMENT APPLICATION	25/07/15

ARCHITECT

HASSELL Limited ABN 007 711 435
LEVEL 2, PIER 8/9,
23 HICKSON ROAD
SYDNEY NSW 2000 AUSTRALIA
SYDNEY@HASSELLSTUDIO.COM
T +61 2 9101 2000 F +61 2 9101 2100

HASSELL

RUSSELL &
GEORGE

pmdl

CLIENT

Grocon

PROJECT

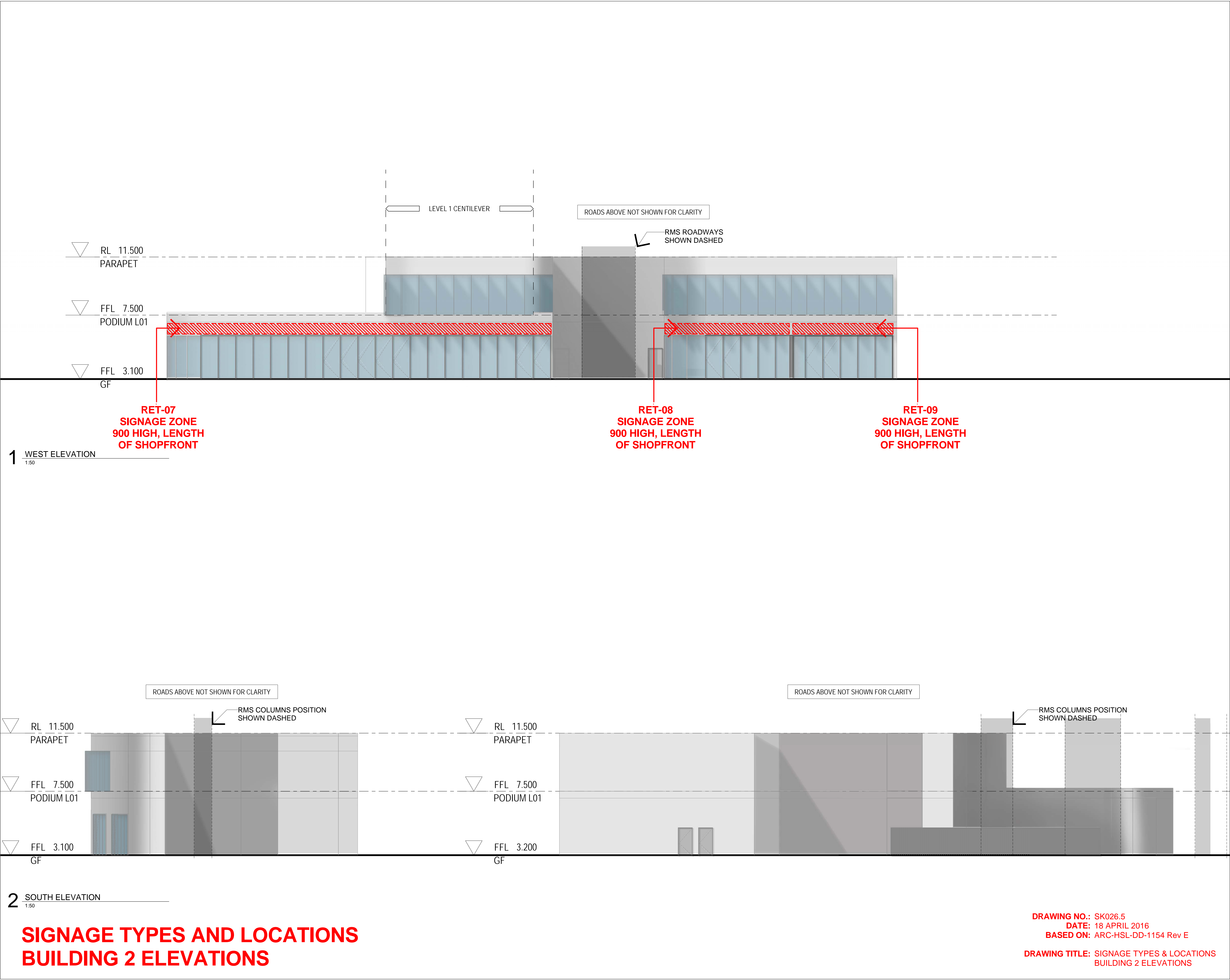
THE RIBBON HOTEL,
SERVICED APARTMENTS AND RETAIL

31 WHEAT ROAD, SYDNEY

DRAWING TITLE

GA ELEVATIONS - SHEET 4

FOR APPROVAL			
SCALE 1:200	DATE 18 APR 2016	DESIGNED BY	APPROVED BY
1:200	18 APR 2016	CW	CW
PROJECT NUMBER	DRAWING NUMBER	REV	
AD0044005	ARC-HSL-DD-M0353	1	E



REFERENCE MAP

0 2 4 8m
1:100

NOTES

- DO NOT SCALE DRAWINGS. WRITTEN DIMENSIONS GOVERN.
- ALL DIMENSIONS ARE IN MILLIMETRES UNLESS NOTED OTHERWISE.
- ALL DIMENSIONS SHALL BE VERIFIED ON SITE BEFORE PROCEEDING WITH THE WORK. HASSELL SHALL BE NOTIFIED IN WRITING OF ANY DISCREPANCIES.
- THIS DRAWING MUST BE READ IN CONJUNCTION WITH ALL RELEVANT CONTRACTS, SPECIFICATIONS AND DRAWINGS.

© COPYRIGHT OF THIS DRAWING IS VESTED IN HASSELL. LTD.
2015 HASSELL. LTD.

THIS DRAWING IS AN UNCONTROLLED COPY, UNLESS NOTED OTHERWISE.

FOR INFORMATION ONLY

REV	DESCRIPTION	DATE
1	ISSUED FOR INFORMATION	15/07/15
2	ISSUED FOR INFORMATION	25/07/15
3	ISSUED FOR INFORMATION	25/07/15
4	ISSUED FOR INFORMATION	25/07/15
5	ISSUED FOR INFORMATION	25/07/15
6	ISSUED FOR INFORMATION	25/07/15
7	ISSUED FOR INFORMATION	25/07/15
8	ISSUED FOR INFORMATION	25/07/15
9	ISSUED FOR INFORMATION	25/07/15
10	ISSUED FOR INFORMATION	25/07/15

ARCHITECT

HASSELL Limited ABN 007 711 435
LEVEL 2, PIER 8/9,
23 HICKSON ROAD
SYDNEY NSW 2000 AUSTRALIA
SYDNEY@HASSELLSTUDIO.COM
T +61 2 9101 2000 F +61 2 9101 2100

HASSELL

RUSSELL & GEORGE **pmdl**

CLIENT

Grocon

PROJECT

THE RIBBON HOTEL,
SERVICED APARTMENTS AND RETAIL

31 WHEAT ROAD, SYDNEY

DRAWING TITLE

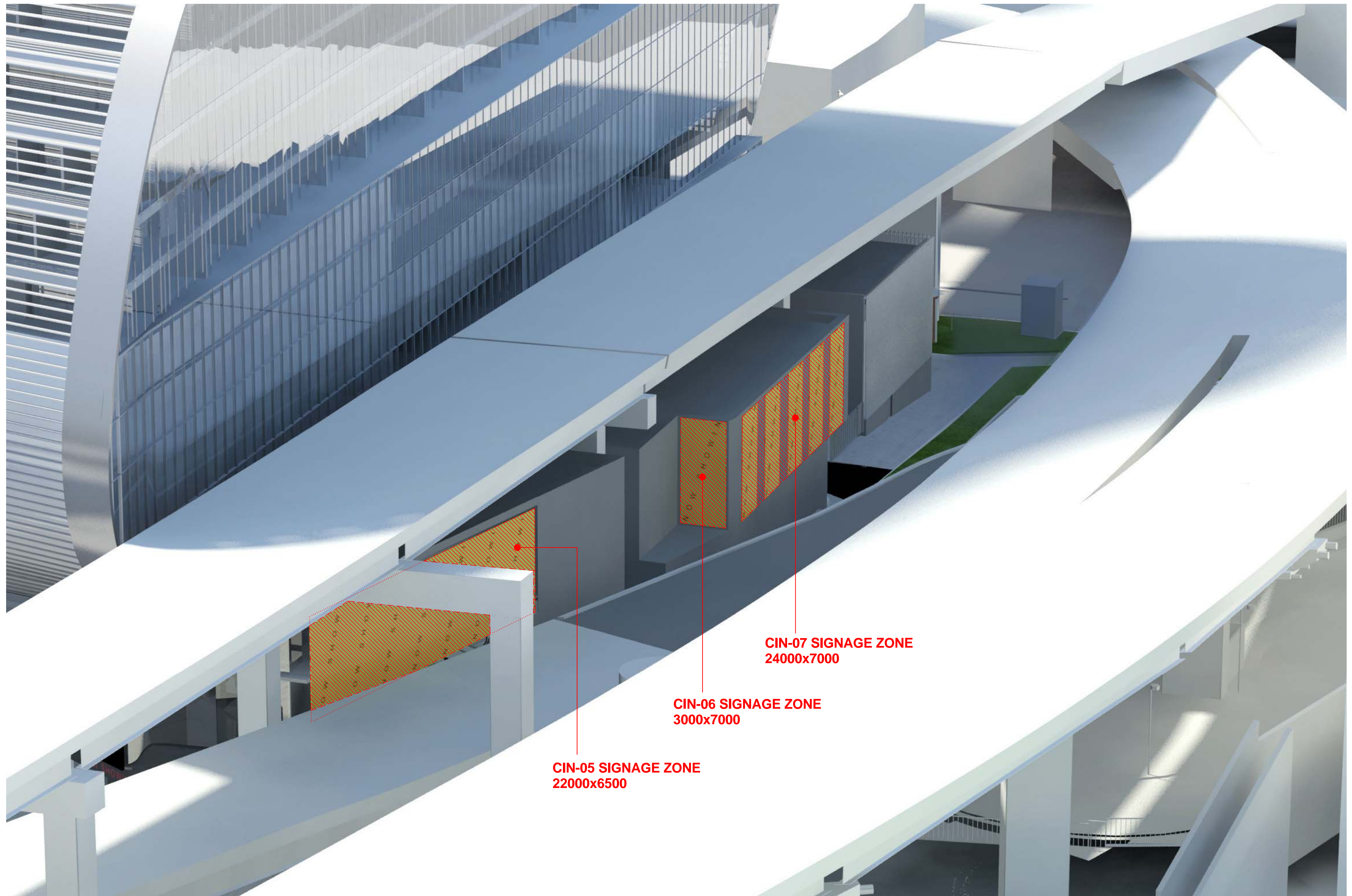
GA ELEVATIONS - BUILDING 2

FOR APPROVAL

FOR INFORMATION ONLY

SCALE 1:100
DRAWN BY: [Name]
CHECKED BY: [Name]
PROJECT NUMBER: ARC-HSL-DD-1154
DRAWING NUMBER: [Number]
REV: [Number]

4/10/2016 10:15:19 AM
Original Sheet Size B1-1000 x 707mm



DRAWING NO.: SK025.6
 DATE: 19 APRIL 2016
 BASED ON: -

DRAWING TITLE: SIGNAGE TYPE AND
 LOCATION - SOUTH
 SIGNAGE
 AERIAL VIEW FROM
 SOUTH WEST

SIGNAGE TYPE AND LOCATION - SOUTH SIGNAGE **AERIAL VIEW FROM SOUTH WEST**

Scale
 NTS

Client
 Grocon

Project Name
 The Ribbon Hotel, Serviced
 Apartments and Retail

HASSELL

RUSSELL &
 GEORGE

pmdl
 ARCHITECTURE
 INTERIORS
 MASTERPLANNING

ASPECT Studios™

Grocon



CIN-05 SIGNAGE ZONE
22000x6500

DRAWING NO.: SK025.7
DATE: 19 APRIL 2016
BASED ON: -

DRAWING TITLE: SIGNAGE TYPE AND
LOCATION - SOUTH
SIGNAGE
VIEW FROM
FREEWAY EXIT

**SIGNAGE TYPE AND LOCATION - SOUTH SIGNAGE
VIEW FROM FREEWAY EXIT**

Scale
NTS

Client
Grocon

Project Name
The Ribbon Hotel, Serviced
Apartments and Retail

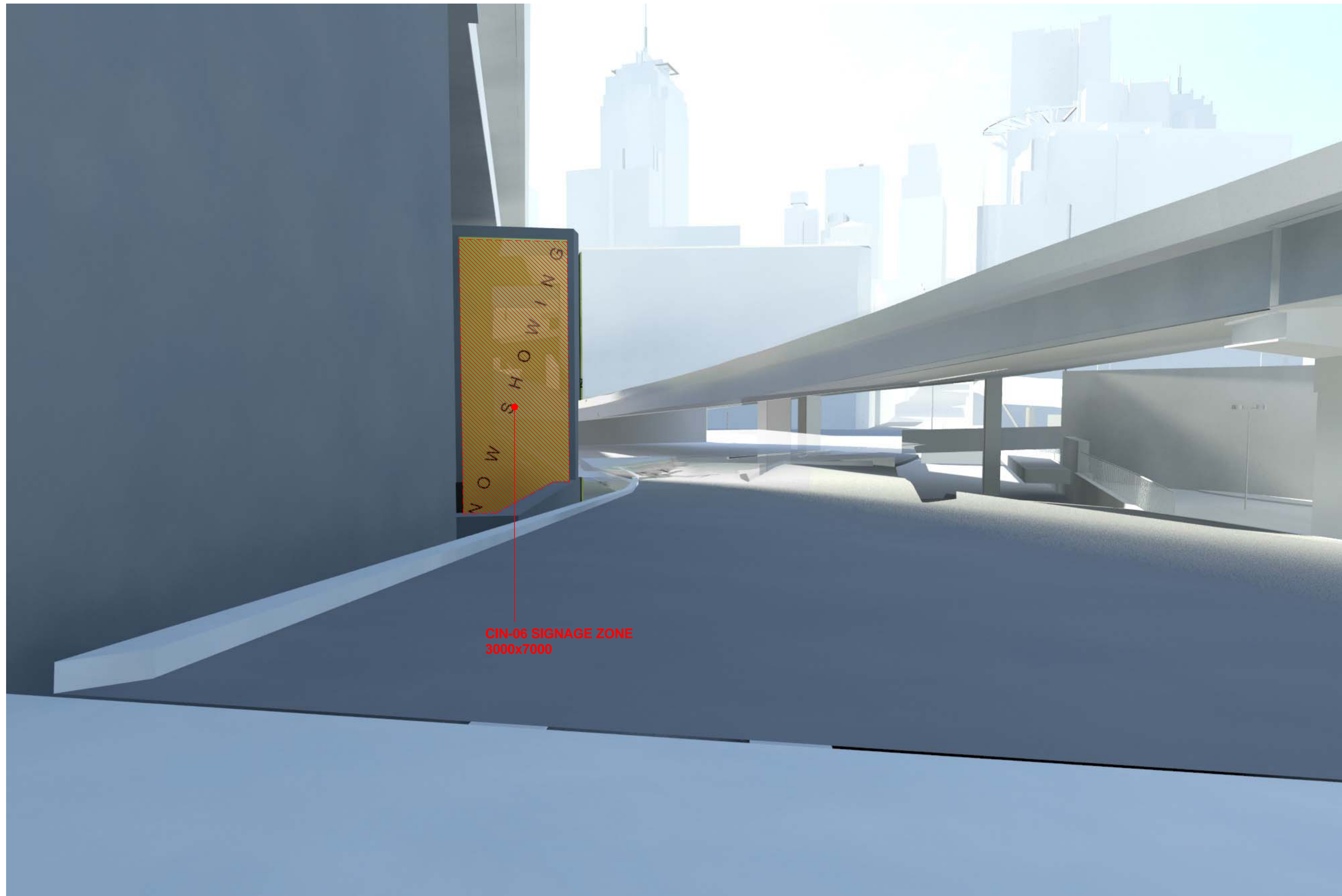
HASSELL

RUSSELL &
GEORGE

pmdl
ARCHITECTURE
INTERIORS
MASTERPLANNING

ASPECT Studios™

Grocon



**SIGNAGE TYPE AND LOCATION - SOUTH SIGNAGE
VIEW FROM FREEWAY EXIT**

DRAWING NO.: SK025.8
DATE: 19 APRIL 2016
BASED ON: -

DRAWING TITLE:
 SIGNAGE TYPE AND
 LOCATION - SOUTH
 SIGNAGE
 VIEW FROM
 FREEWAY EXIT

Scale
 NTS

Client
 Grocon

Project Name
 The Ribbon Hotel, Serviced
 Apartments and Retail

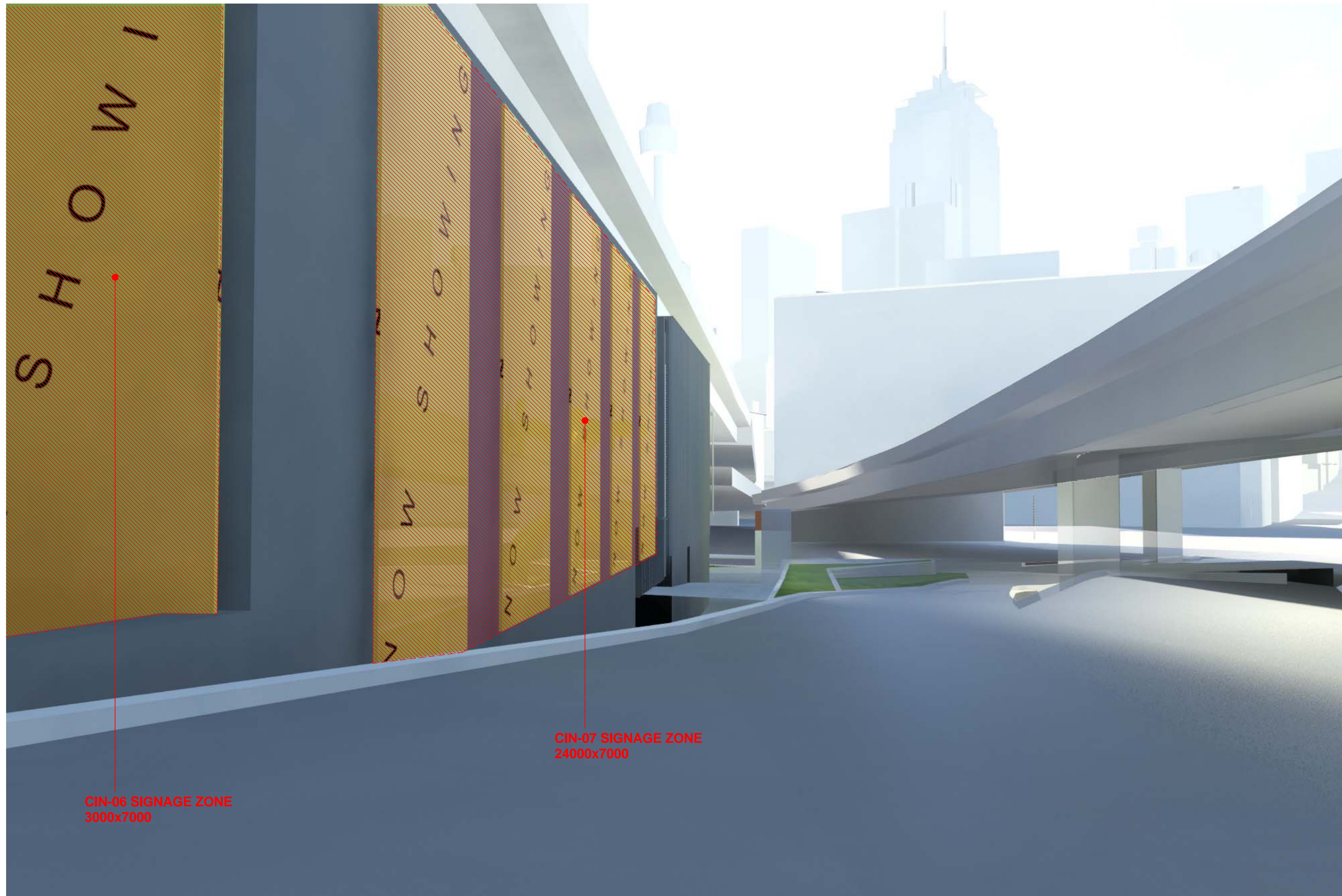
HASSELL

RUSSELL &
 GEORGE

pmdl
 ARCHITECTURE
 INTERIORS
 MASTERPLANNING

ASPECT Studios™

Grocon



**SIGNAGE TYPE AND LOCATION - SOUTH SIGNAGE
VIEW FROM FREEWAY EXIT**

DRAWING NO.: SK025.9
DATE: 19 APRIL 2016
BASED ON: -

DRAWING TITLE: SIGNAGE TYPE AND
 LOCATION - SOUTH
 SIGNAGE
 VIEW FROM
 FREEWAY EXIT

Scale
 NTS

Client
 Grocon

Project Name
 The Ribbon Hotel, Serviced
 Apartments and Retail

HASSELL

RUSSELL &
 GEORGE

pmdl
ARCHITECTURE
 INTERIORS
 MASTERPLANNING

 ASPECT Studios™

 Grocon



CIN-07 SIGNAGE ZONE
24000x7000

DRAWING NO.: SK025.10
DATE: 19 APRIL 2016
BASED ON: -

DRAWING TITLE: SIGNAGE TYPE AND
LOCATION - SOUTH
SIGNAGE
VIEW FROM
FREEWAY RAMP

SIGNAGE TYPE AND LOCATION - SOUTH SIGNAGE VIEW FROM FREEWAY RAMP

Scale
NTS

Client
Grocon

Project Name
The Ribbon Hotel, Serviced
Apartments and Retail

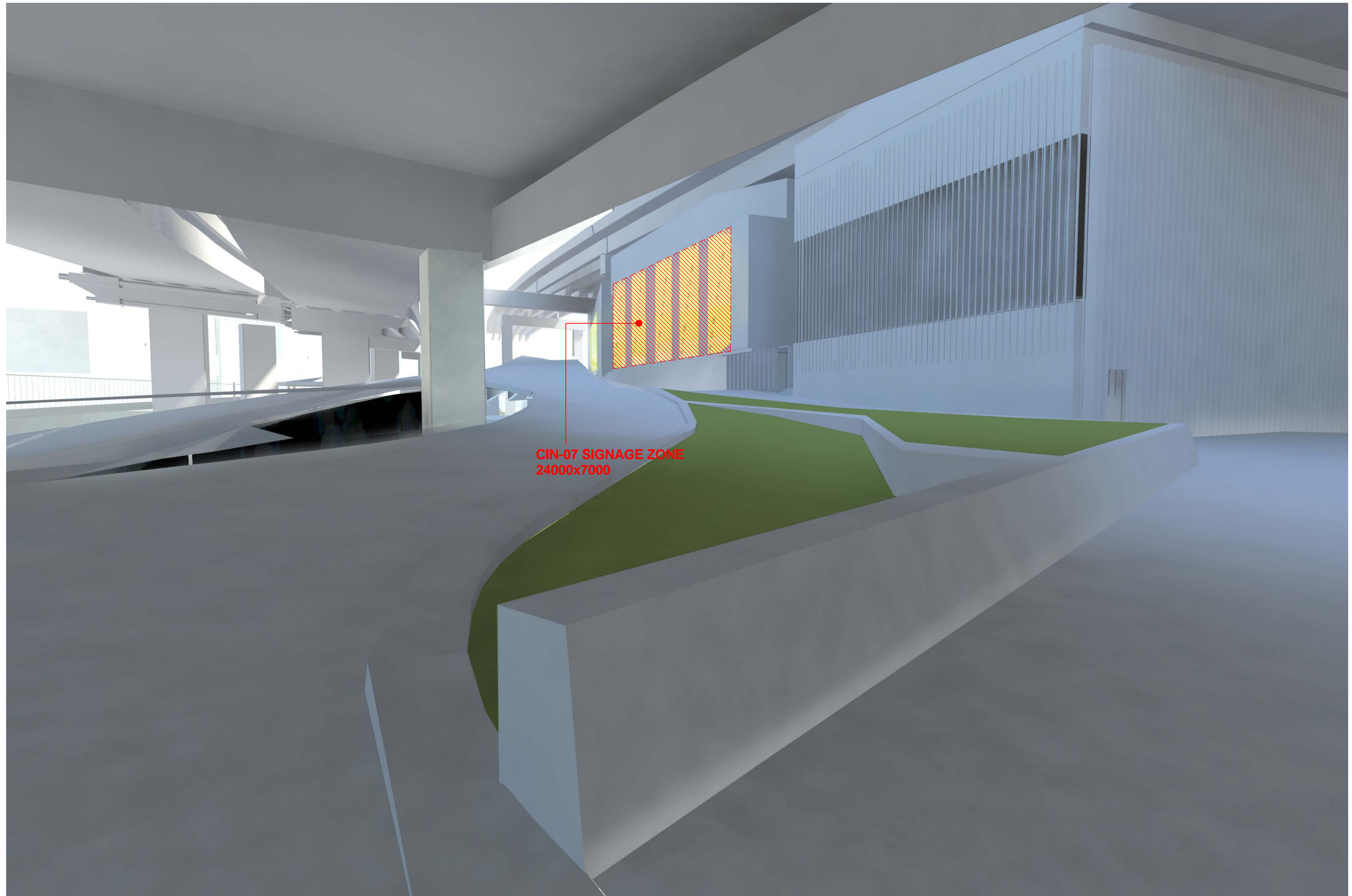
HASSELL

RUSSELL &
GEORGE

pmdl
ARCHITECTURE
INTERIORS
MASTERPLANNING

ASPECT Studios™

Grocon



DRAWING NO.: SK025.11
DATE: 19 APRIL 2016
BASED ON: -

DRAWING TITLE: SIGNAGE TYPE AND
 LOCATION - SOUTH
 SIGNAGE
 SOUTH-EAST
 PEDESTRIAN APPROACH

SIGNAGE TYPE AND LOCATION - SOUTH SIGNAGE SOUTH-EAST PEDESTRIAN APPROACH

Scale
 NTS

Client
 Grocon

Project Name
 The Ribbon Hotel, Serviced
 Apartments and Retail

HASSELL

RUSSELL &
 GEORGE

pmdl
 ARCHITECTURE
 INTERIORS
 MASTERPLANNING

ASPECT Studios™

Grocon