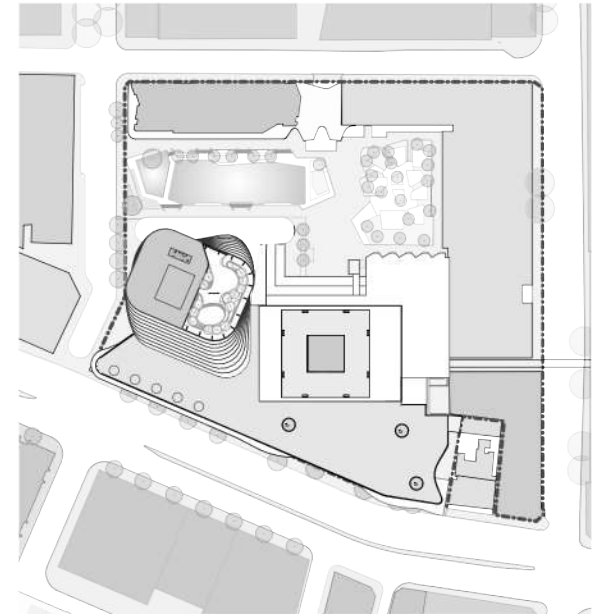
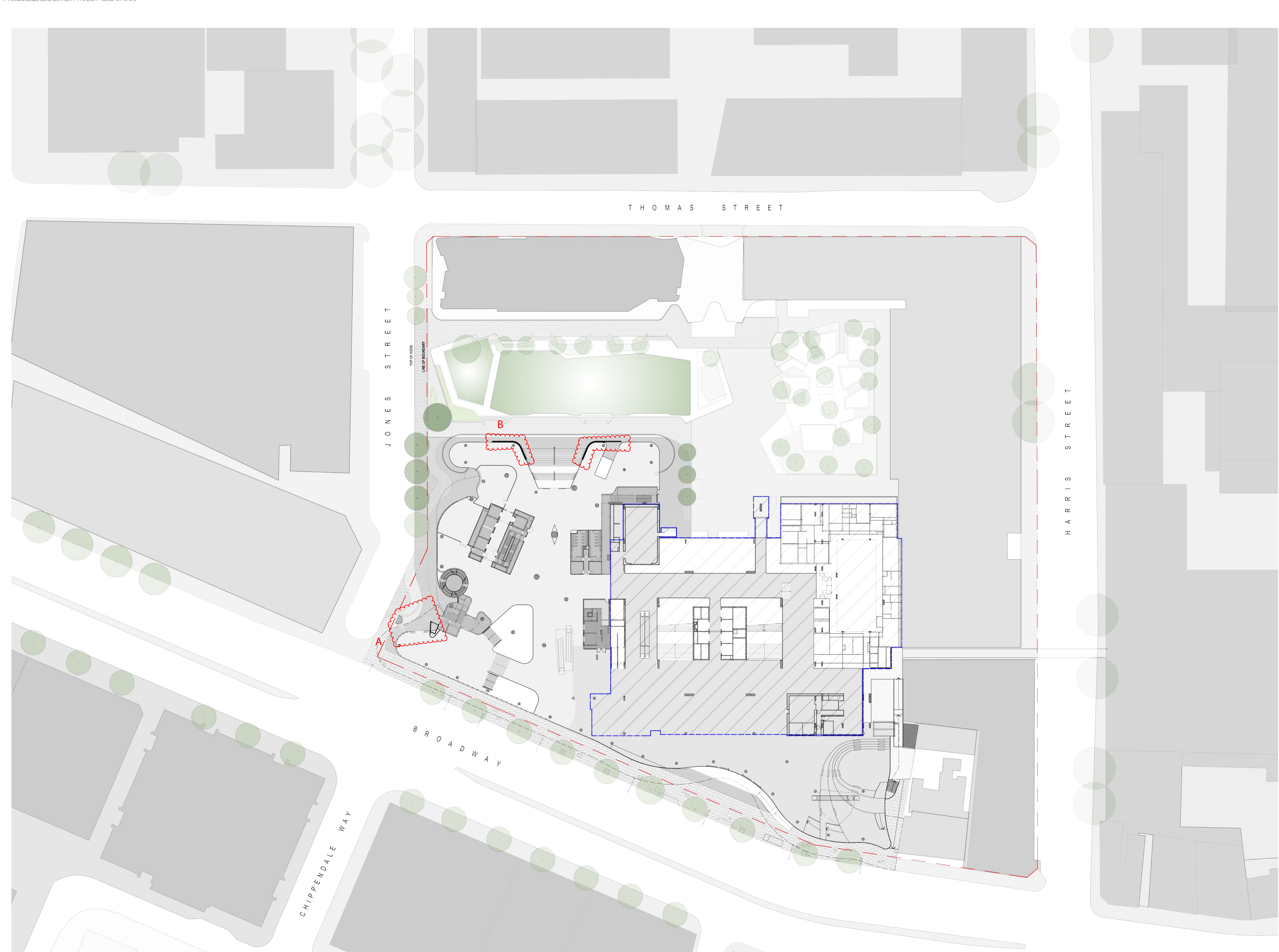



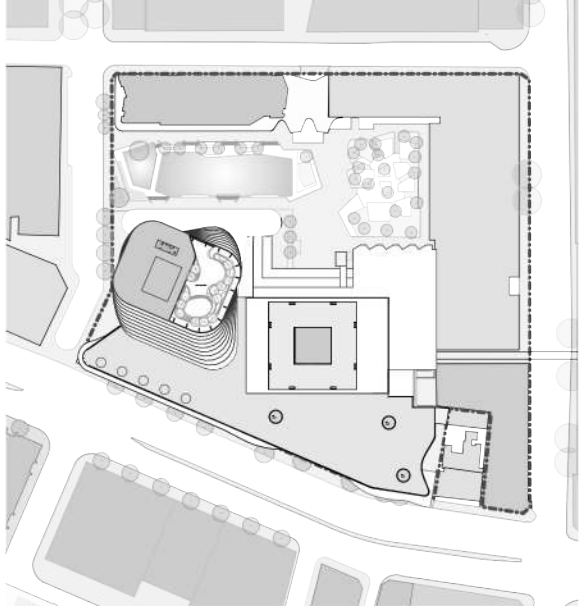
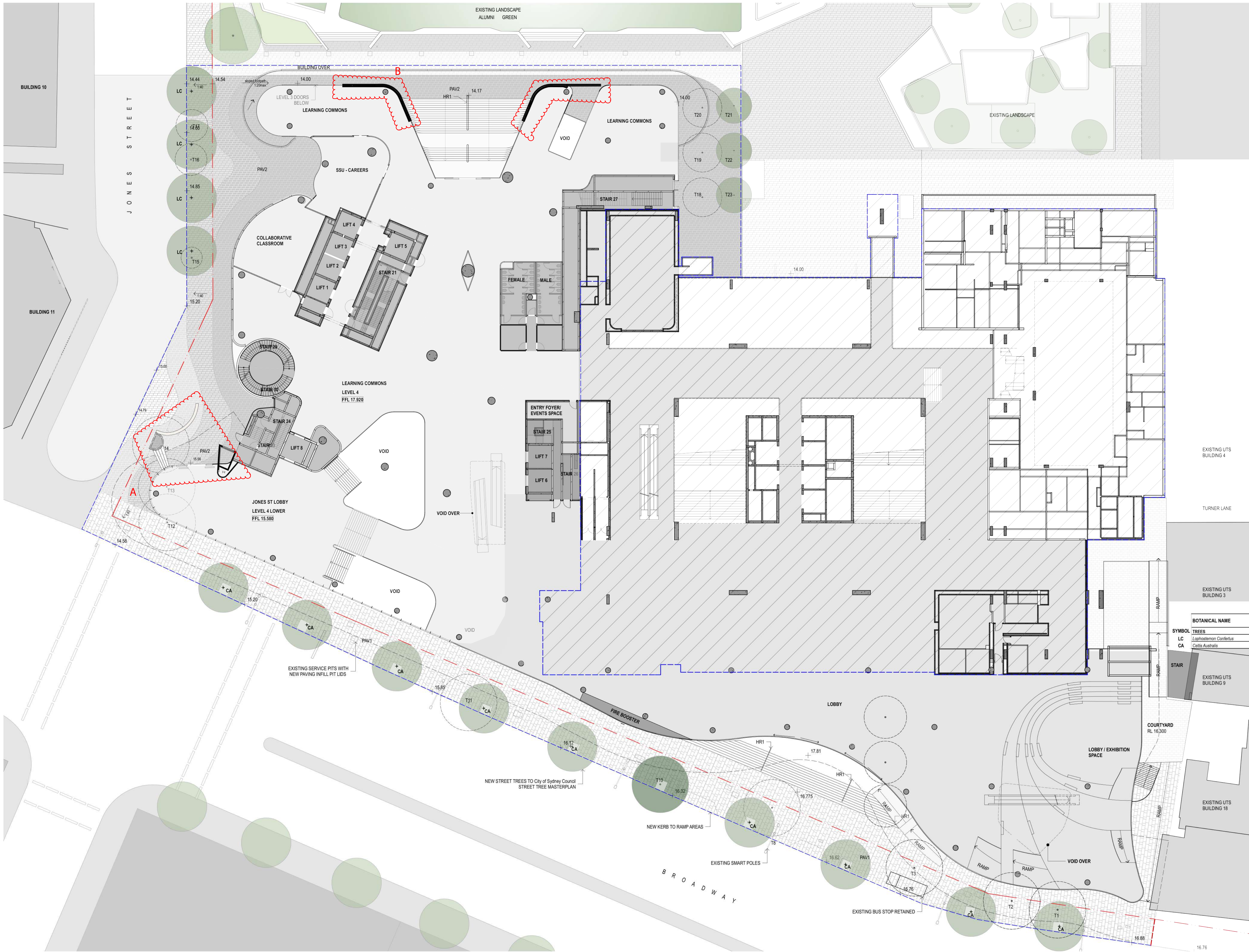
- LEGEND
- EXTENT OF DEVELOPMENT APPLICATION PROPOSAL
 - SUBSTATION VENTILATION

C	ISSUED FOR DEVELOPMENT APPLICATION S4.55	07/2018
B	ISSUED FOR DEVELOPMENT APPLICATION S96	01/2017
REV.	DESCRIPTION	DATE



- LEGEND
-  EXTENT OF EXISTING BUILDING
 - A** SUBSTATION VENTILATION
 - B** ALUMNI GREEN FACADE

C	ISSUED FOR DEVELOPMENT APPLICATION S4.55	07/2018
B	ISSUED FOR DEVELOPMENT APPLICATION S96	01/2017
REV.	DESCRIPTION	DATE



- LEGEND**
- NEW TREES
 - TREES TO BE RETAINED
 - TREES TO BE REMOVED
 - BOUNDARY LINE
 - SCOPE OF WORKS
- MPB** AREAS OF MASS PLANTING
- TRF** AREAS OF TURF
- PAV1** NEW GRANITE PAVING TO CITY OF SYDNEY SPECIFICATION
- PAV2** NEW PRECAST CONCRETE PAVING WITH VARIOUS FINISHES (RADIAL PATTERN)
- TD2** NEW TIMBER DECKING
- PAV3** PAVING LAID ON PAVING SUPPORTS OR SIMILAR
- PAV4** PRECAST CONCRETE PLANKS
- RTW1** RETAINING WALLS
- HR1** HANDRAIL
- BO1** BOLLARD
- TD1** TIMBER BENCH SEATS

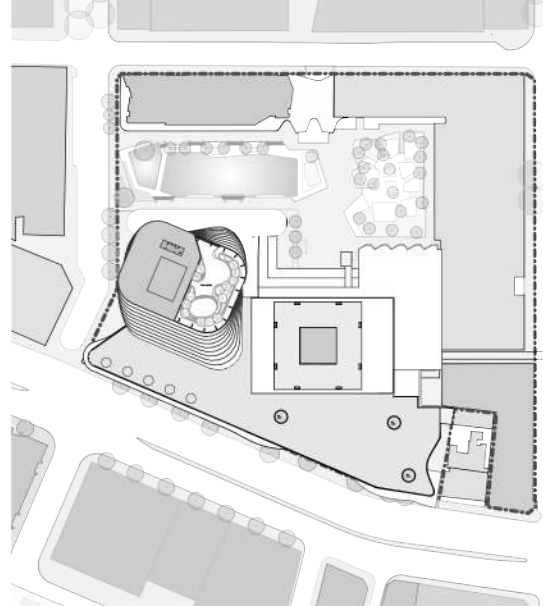
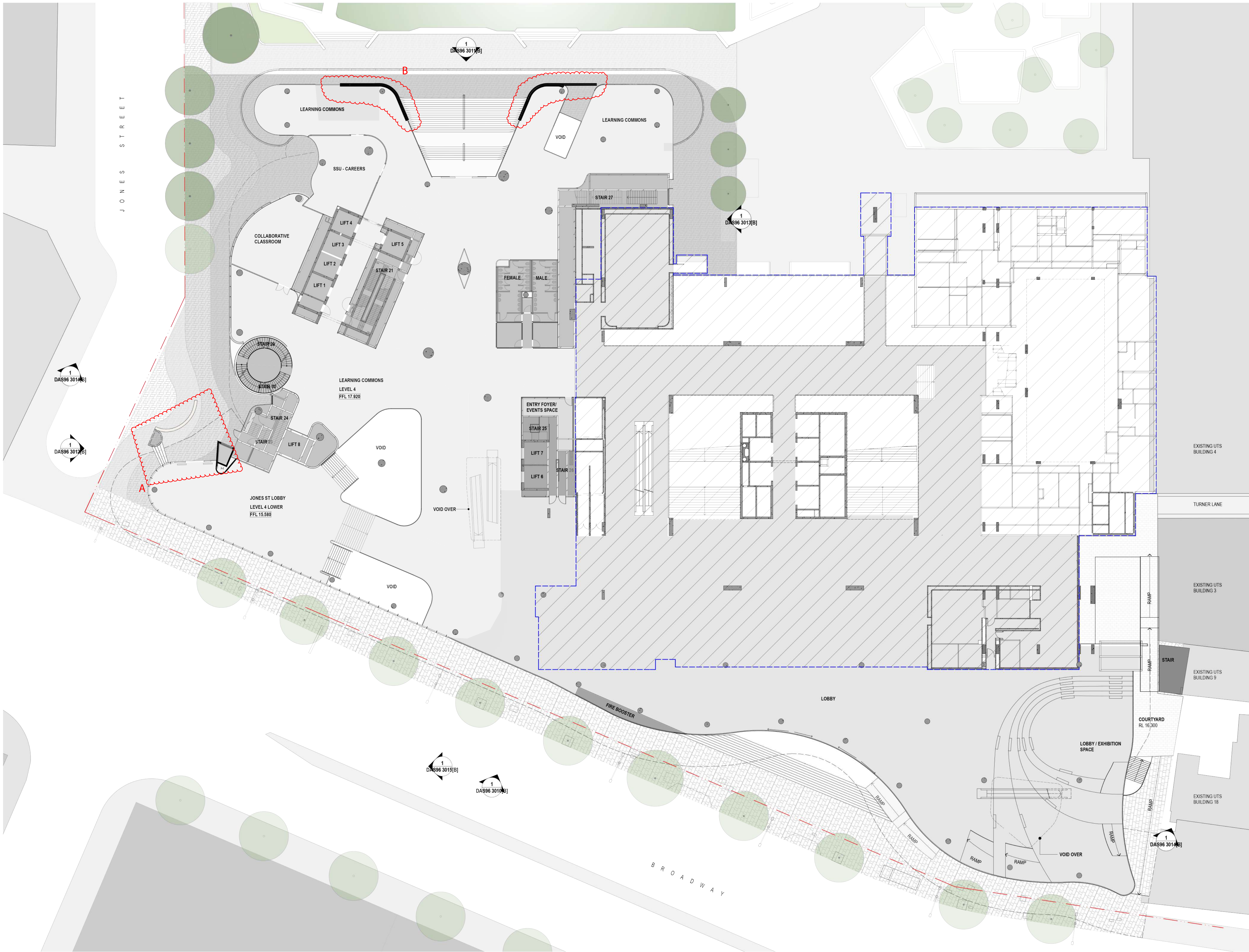
PLANTING SCHEDULE

	BOTANICAL NAME	COMMON NAME	CONTAINER SIZE	SPACING
SYMBOL TREES	LC	Leptospermum Corlettii	200L	As shown
	CA	Celtis Australis	200L	As shown

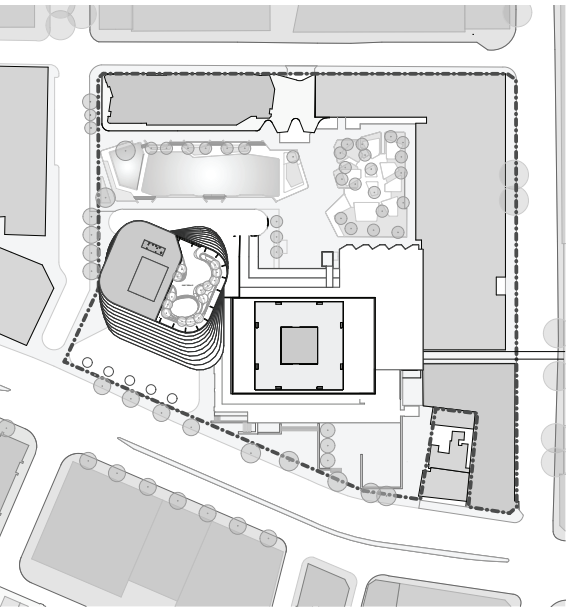
- A** SUBSTATION VENTILATION
- B** ALUMNI GREEN FACADE

C	ISSUED FOR DEVELOPMENT	07/2018
B	APPLICATION S4.55	01/2017
REV.	DESCRIPTION	DATE

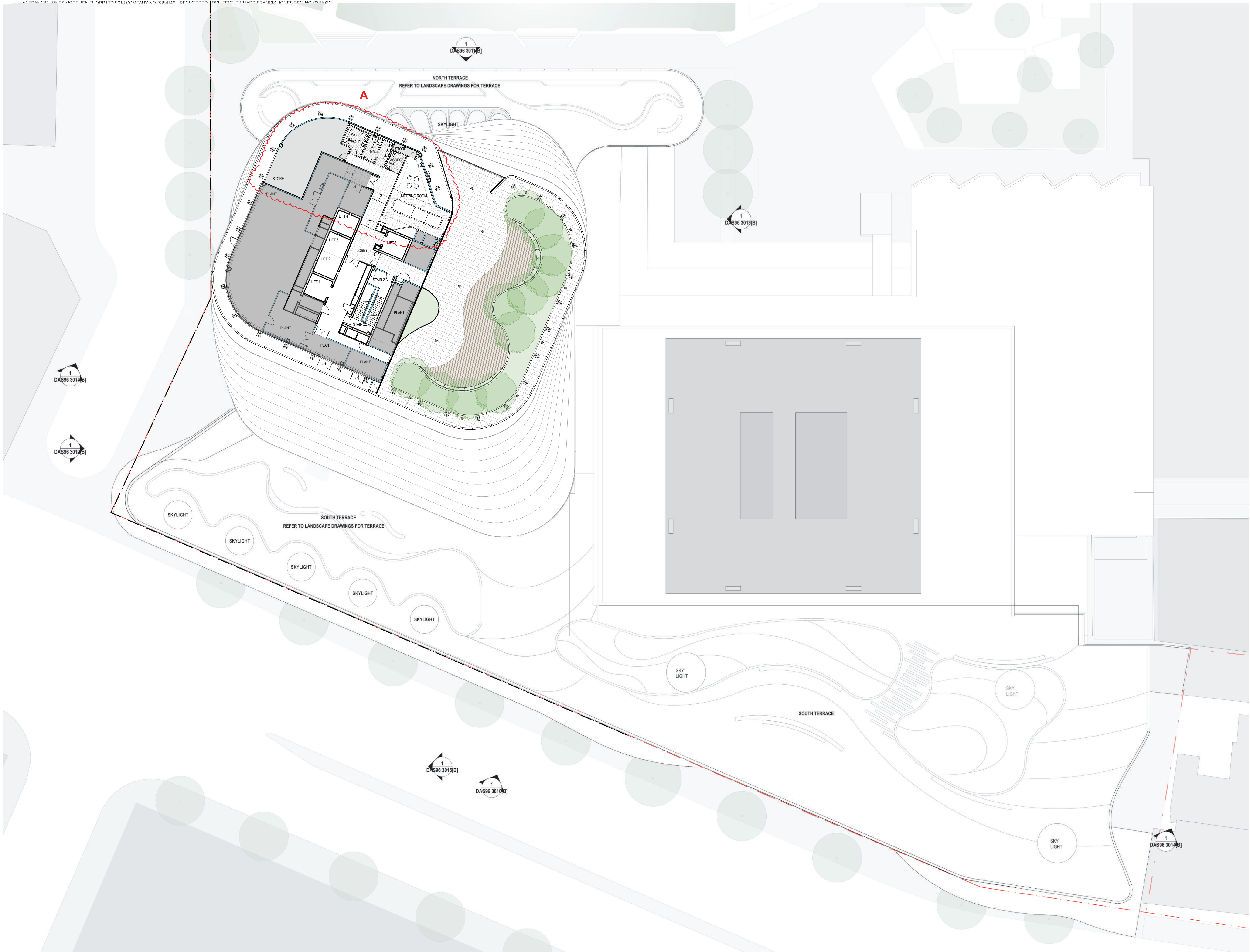
1:250 @ A1
JULY 2018
DA S96 6011 [C]
For information



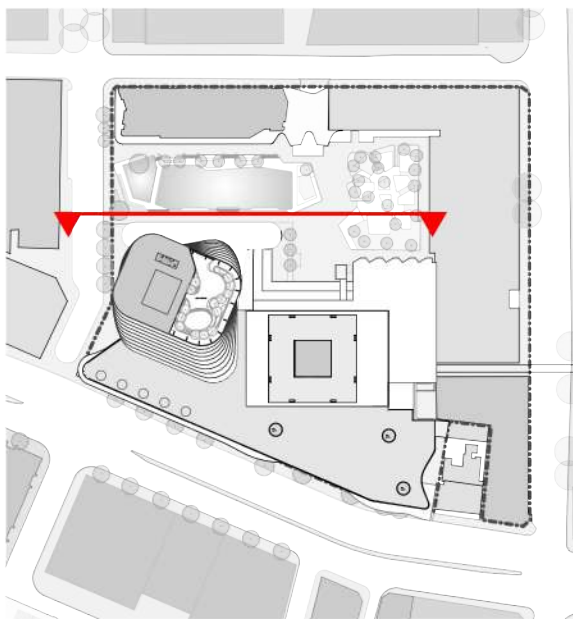
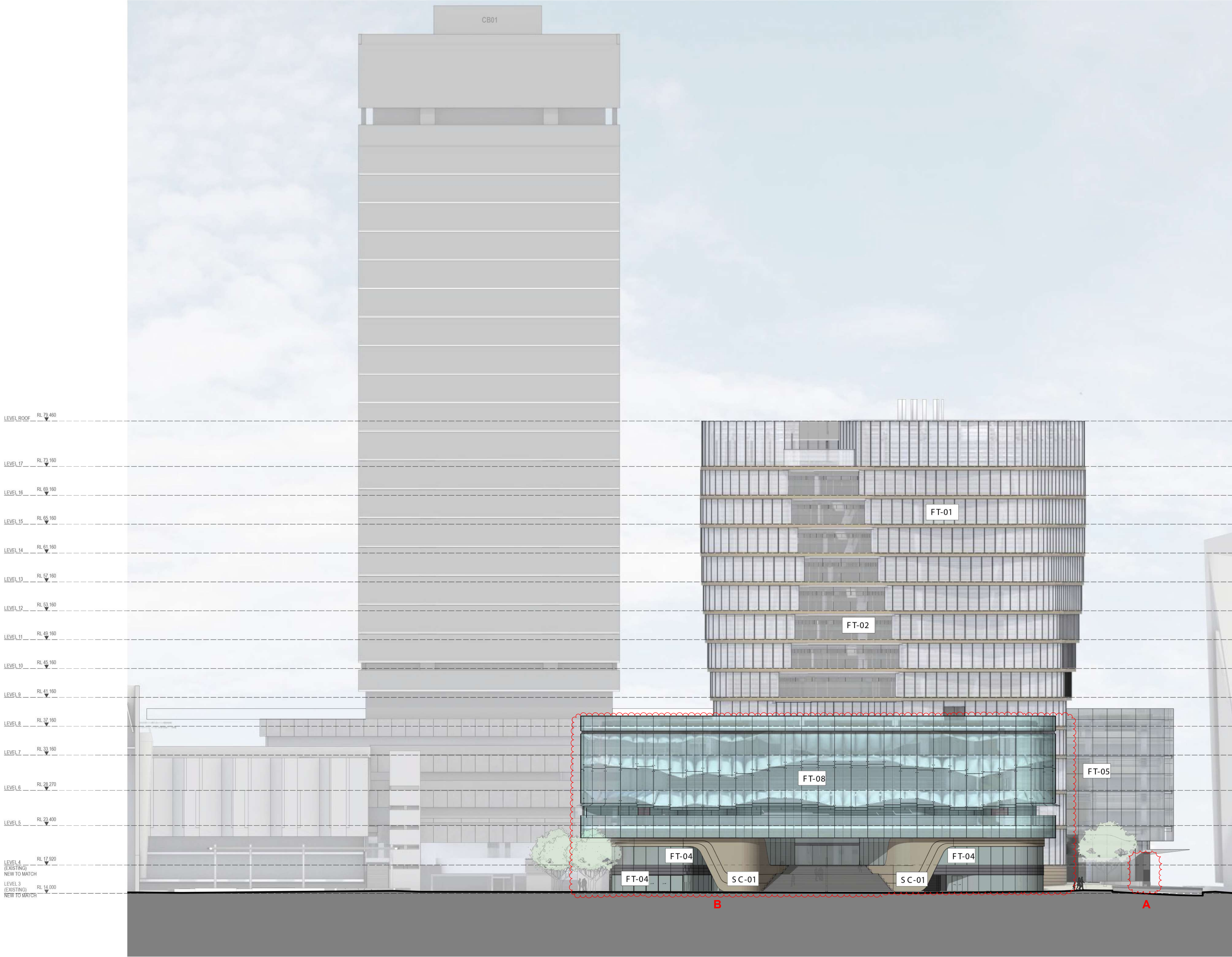
- LEGEND**
- EXTENT OF EXISTING BUILDING
- CHANGES**
- A SUBSTATION VENTILATION
 - B ALUMNI GREEN FACADE



A INTERNAL PLANNING CHANGES



C	ISSUED FOR SECTION 4.55 APPLICATION	07/2018
REV.	DESCRIPTION	DATE



- A** SUBSTATION VENTILATION
- B** ALUMNI GREEN FACADE

FACADE TYPE LEGEND

- FT01** ALUMINIUM FRAMED CLOSED CAVITY CURTAIN WALL SYSTEM WITH INTEGRATED ALUMINIUM VENETIAN BLINDS.
- FT02** GLAZED FIN SUPPORTED SINGLE LEAF GLAZING SYSTEM
- FT03** GLAZED FIN SUPPORTED SHOPFRONT GLAZING SYSTEM
- FT04** GLAZED FACADE COMPRISING VISION AND SPANDREL STRIPS WITH EXTERNAL BATTENS
- FT05** GLAZED FACADE COMPRISING VISION AND SPANDREL STRIPS. STEEL FRAMED HORIZONTAL SYSTEM WITH 3 TRANSOMS NOM. PER FLOOR
- FT06** GLAZED FRAMELESS FACADE
- FT08** FIXED SINGLE SKIN GLAZING WITH BANKS OF OPERABLE LOUVRES
- SC01** NATURAL SANDSTONE PANELS ON PROPRIETARY SUB FRAMING OR STUB WALL

C	ISSUED FOR DEVELOPMENT APPLICATION S4.55	07/2018
B	ISSUED FOR DEVELOPMENT APPLICATION S96	01/2017
REV.	DESCRIPTION	DATE

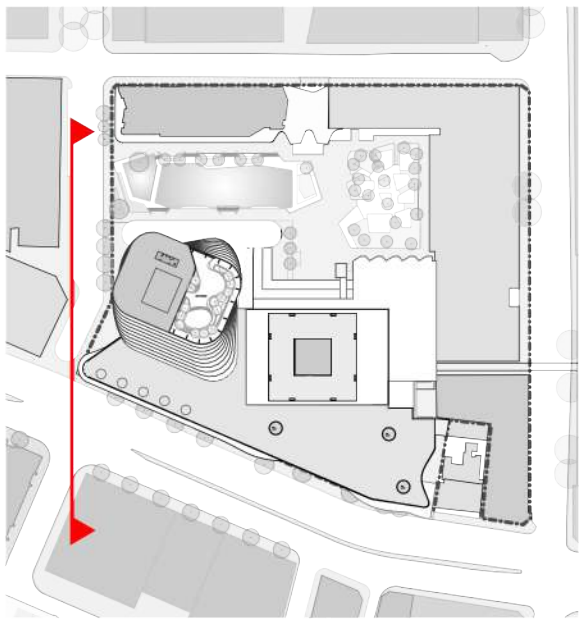
0 2.5 5 10m

1:250 @ A1

JULY 2018

For information

DAS4.55 3011[C]



A SUBSTATION VENTILATION

B ALUMNI GREEN FACADE

FACADE TYPE LEGEND

- FT01** ALUMINIUM FRAMED CLOSED CAVITY CURTAIN WALL SYSTEM WITH INTEGRATED ALUMINIUM VENETIAN BLINDS.
- FT02** GLAZED FIN SUPPORTED SINGLE LEAF GLAZING SYSTEM
- FT03** GLAZED FIN SUPPORTED SHOPFRONT GLAZING SYSTEM
- FT04** GLAZED FACADE COMPRISING VISION AND SPANDREL STRIPS WITH EXTERNAL BATTENS
- FT05** GLAZED FACADE COMPRISING VISION AND SPANDREL STRIPS. STEEL FRAMED HORIZONTAL SYSTEM WITH 3 TRANSOMS NOM. PER FLOOR
- FT06** GLAZED FRAMELESS FACADE
- FT08** FIXED SINGLE SKIN GLAZING WITH BANKS OF OPERABLE LOUVRES
- SC01** NATURAL SANDSTONE PANELS ON PROPRIETARY SUB FRAMING OR STUB WALL

C ISSUED FOR DEVELOPMENT APPLICATION S4.55			07/2018
B ISSUED FOR DEVELOPMENT APPLICATION S99			01/2017
REV.	DESCRIPTION	DATE	

0 2.5 5 10m

1:250 @ A1

JULY 2018

For Information

DAS4.55 3012[C]