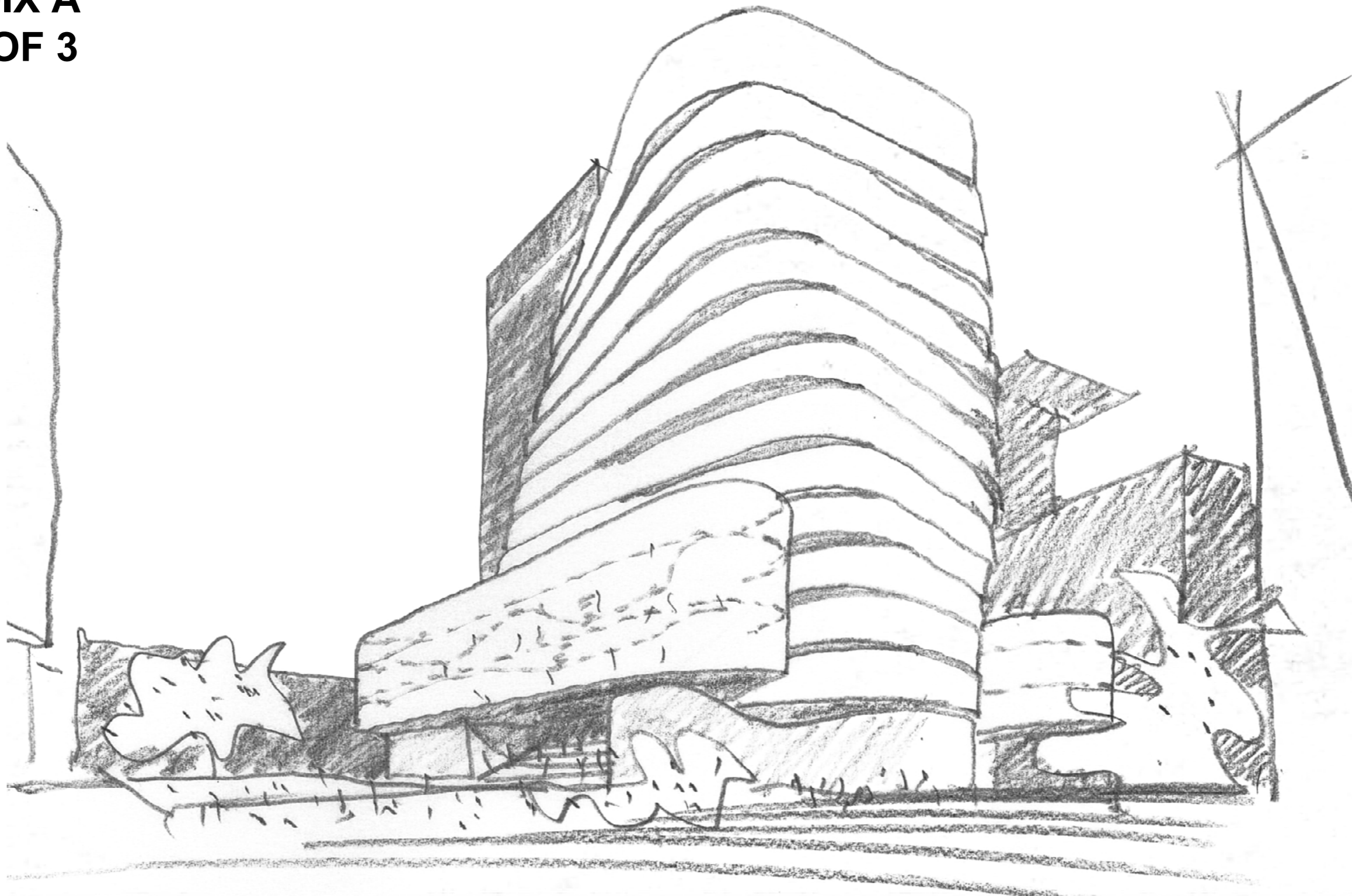


APPENDIX A

PART 1 OF 3



UTS Central Project
DA Section 96
Response to feedback

University of Technology Sydney

fjmt studio architecture interiors urban landscape

architects in association: LACOSTE + STEVENSON | DARYL JACKSON ROBIN DYKE PTY LTD

fjmt

Contents

1.0	Relationship of the Broadway facade in the Section 96 to the original DA & the principles of the competition winning design	4
2.0	Phase 2 integration with Phase 1	8
3.0	General Teaching Spaces	10
4.0	Broadway Activation	12

1.0 Relationship of the Broadway facade in the Section 96 to the original DA & principles of the competition winning design

The façade should show a closer relationship to the competition winning entry which includes curvature in the façade in three dimensions.

The Broadway facade has maintained the curvature in the facade in three dimensions and remains consistent with Lacoste + Stevenson's design intent of the original competition winning scheme.

This is most apparent at the entry from Broadway as consistent with the Concept Design intent. There have been ongoing discussions with facade specialists as to how this curvature may be achieved while providing a consistent legibility of Phase 1 and 2 across the entire Broadway facade.

The building is closely related to the ideas and principles that are represented in the original design competition. This is demonstrated across the building and the design elements that are expressed there. The facade remains "both playful and contemporary, a foil to the Brutalist architecture of the Tower above."

"The new UTS podium building marks the entrance not only to the landmark UTS Tower, but becomes a celebrated front door to the campus itself, leading directly into the ceremonial heart of the university".

The facade maintains the campus entry as depicted in the original competition, remaining an "elegant, 3-storey sweep of the glass curtain back into the body of the building". The glass facade remains "transparent at street level to reveal the activity and occupation within."

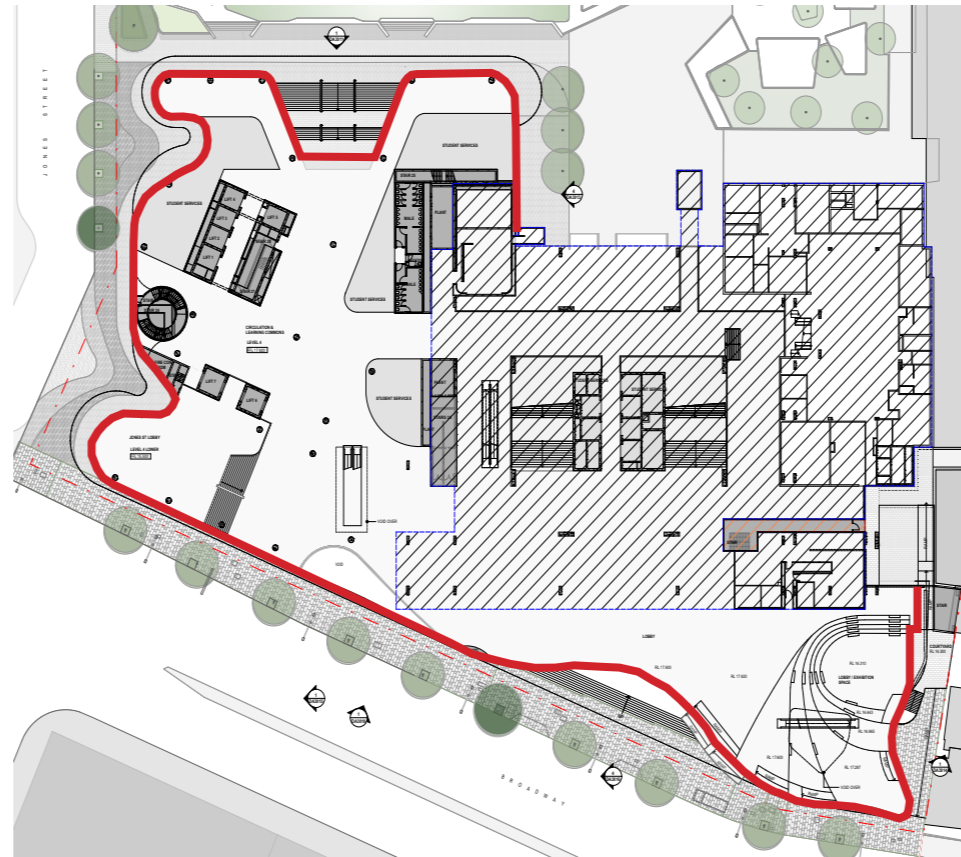
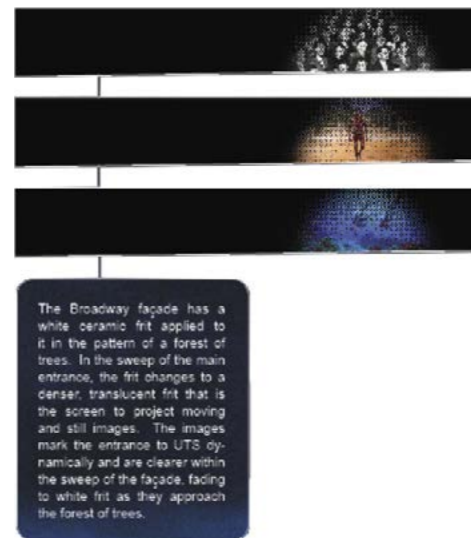
The current design contains the "frit pattern applied above the awning level." This preserves the competition principle that the "new UTS podium building's material distinctness from the Tower softens the university edge in contrast to the concrete Brutalist architecture of the University's landmark tower. It is light, transparent and open in direct contrast to the Tower's enclosed teaching and administrative levels."

The active edge along the Level 4 Broadway Facade has been maintained where the conditions of the site have allowed. One entrance from the competition (midway between the Jones st corner and the Main entrance) was found to be impractical due to the change in levels across the site.

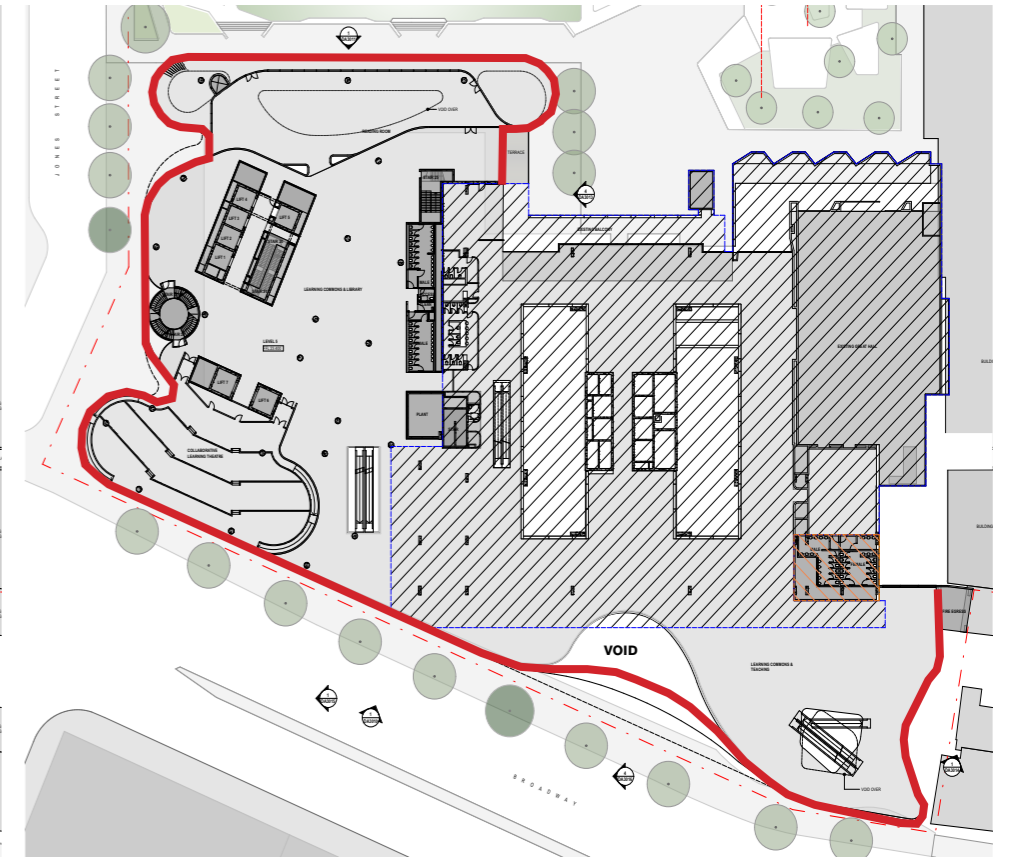
The close relationship between the Section 96 design and the original competition winning design is confirmed in a letter from Lacoste + Stevenson (28.03.2017) where they state:

"DJRD and Lacoste + Stevenson confirm that the Broadway facade as depicted in the current S96 application faithfully represents the design intent of the original competition-winning scheme.

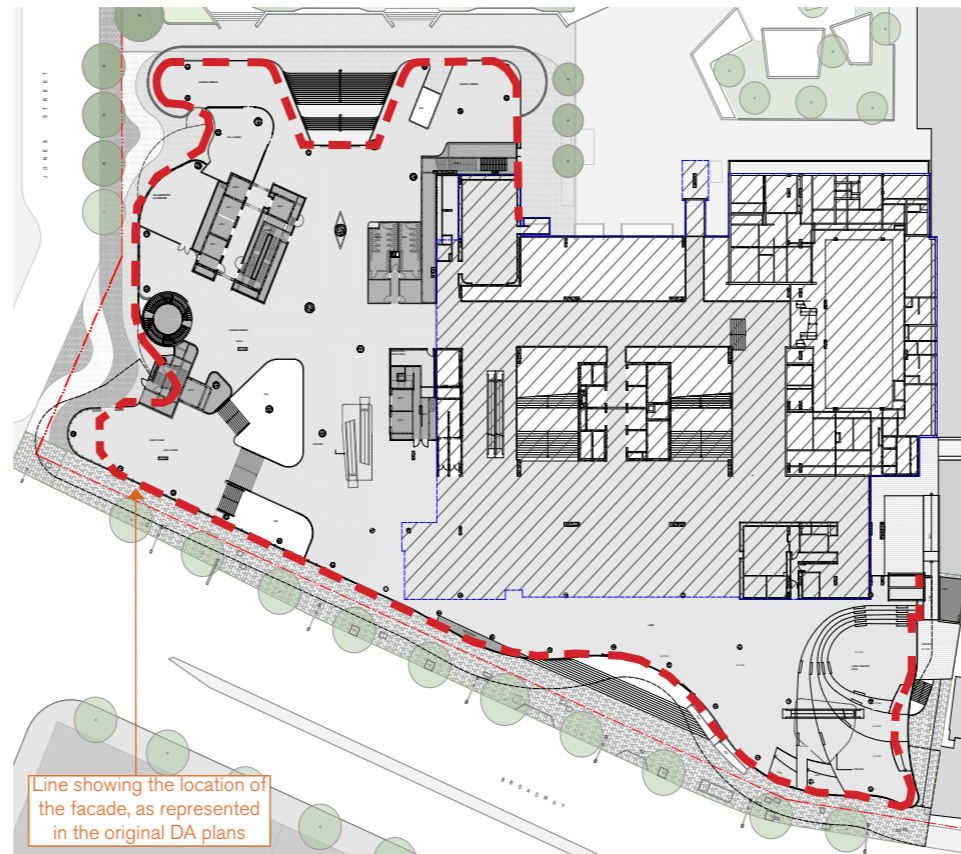
In particular, the height, width and gradient of the expressive and pronounced curved form of the main entrance in Stage 2 is maintained."



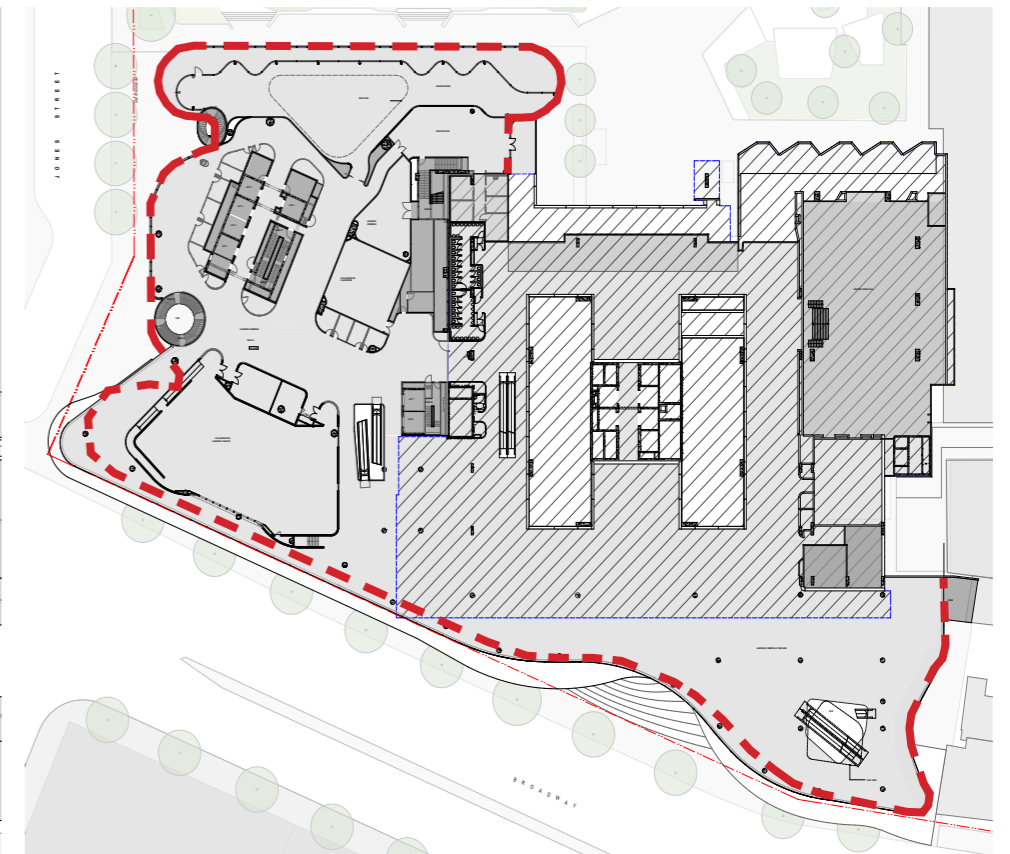
Level 4 - Original DA showing line of Broadway facade



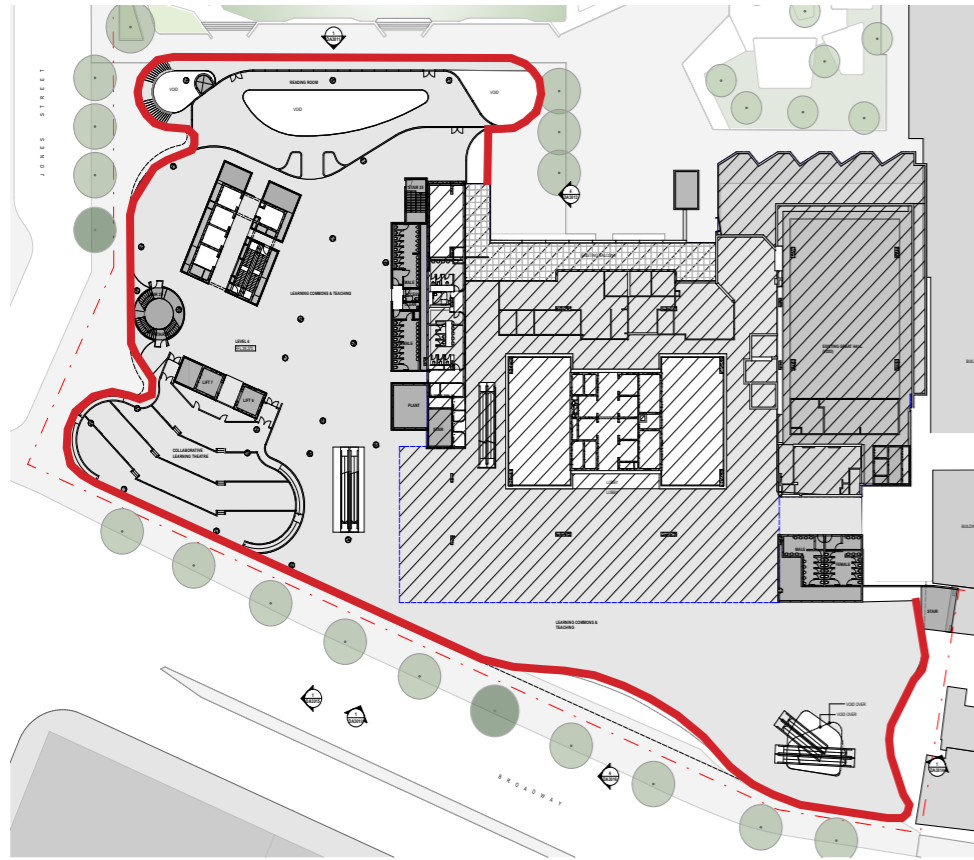
Level 5 - Original DA showing line of Broadway facade



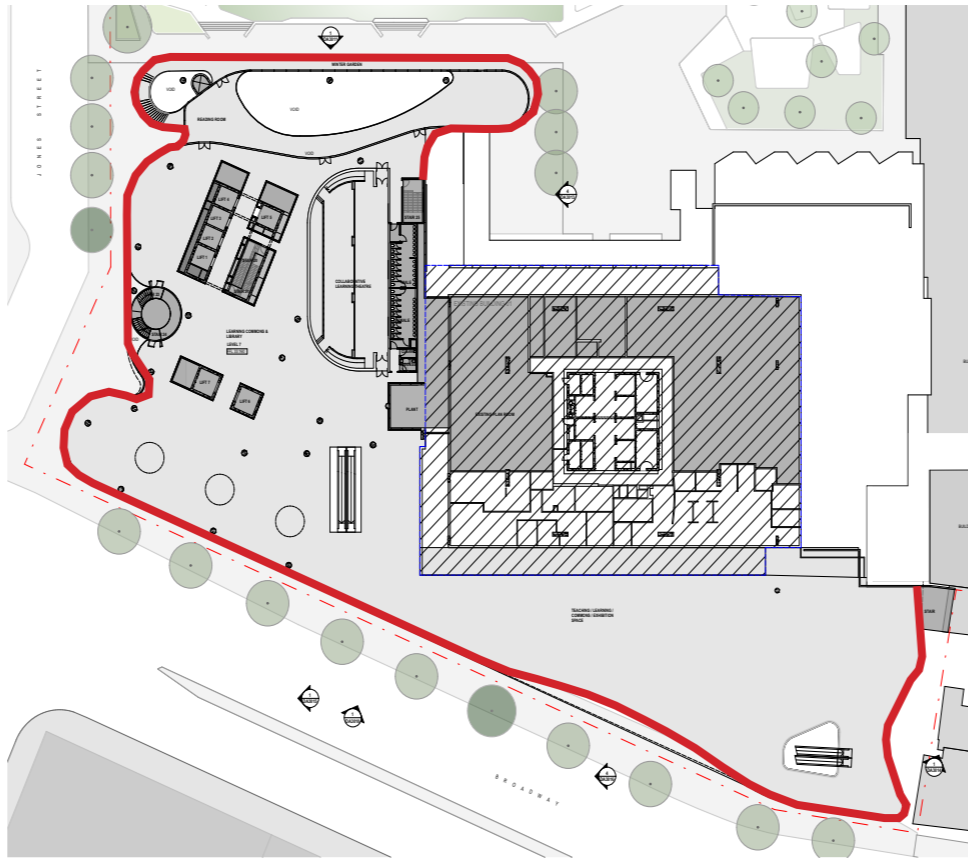
Level 4 - DA Section 96 background, with overlay of original DA facade



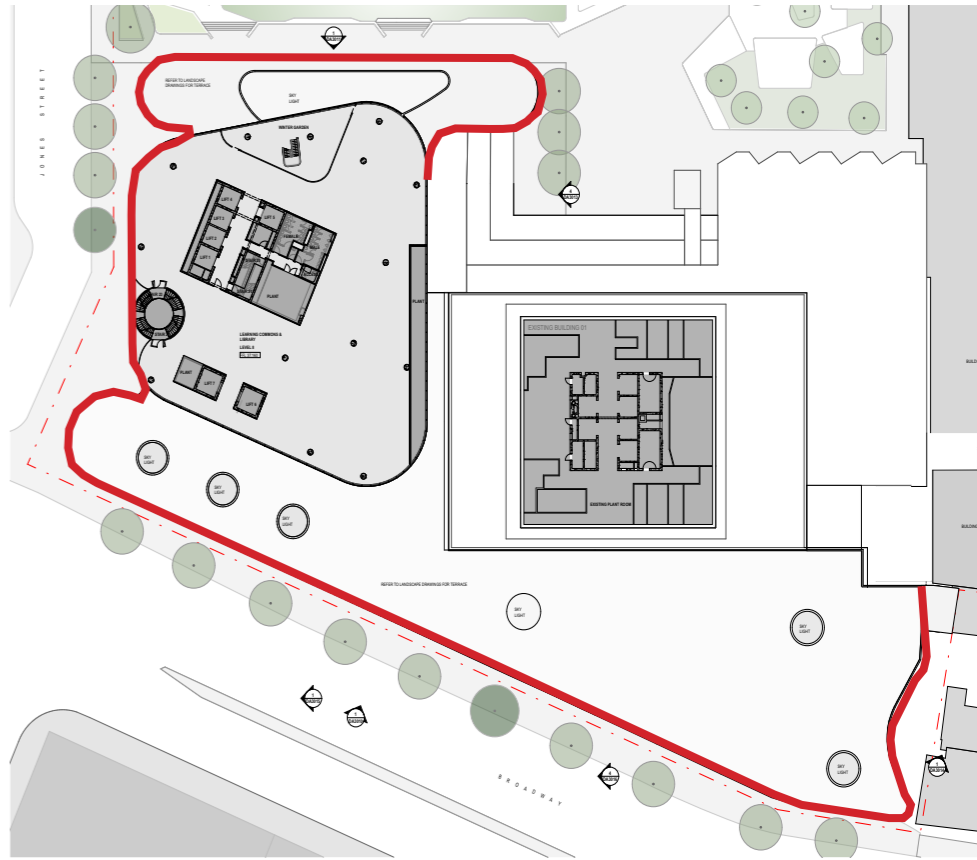
Level 5 - DA Section 96 background, with overlay of original DA facade



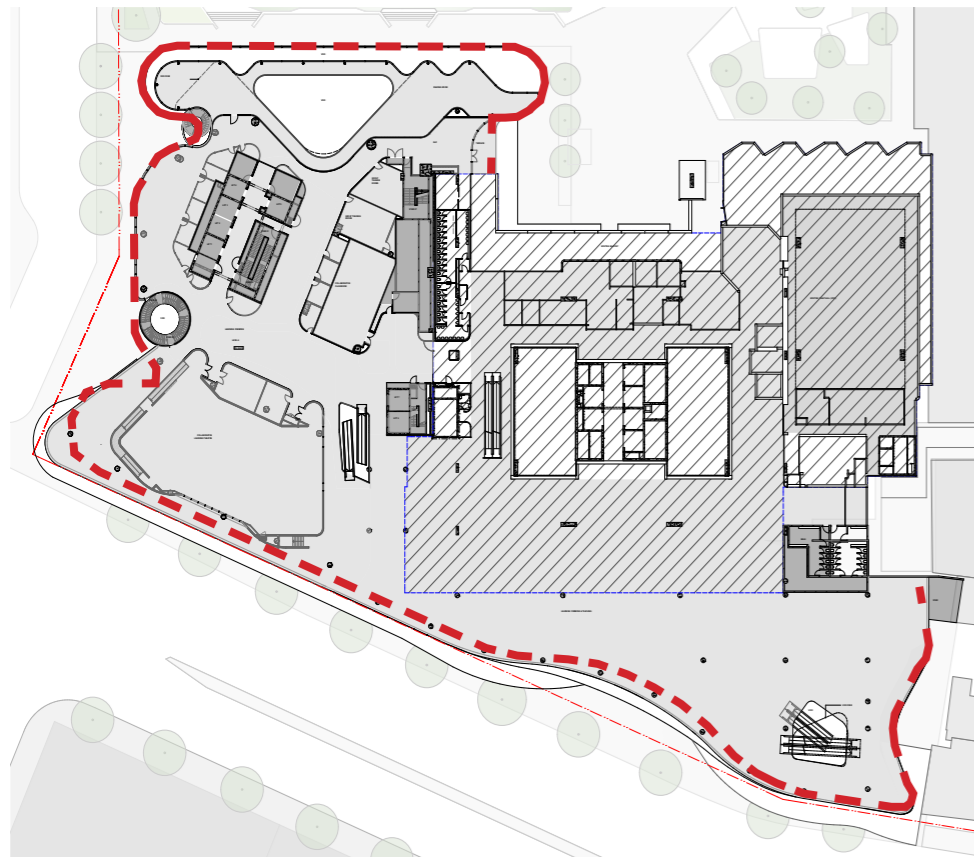
Level 6 - Original DA showing line of Broadway facade



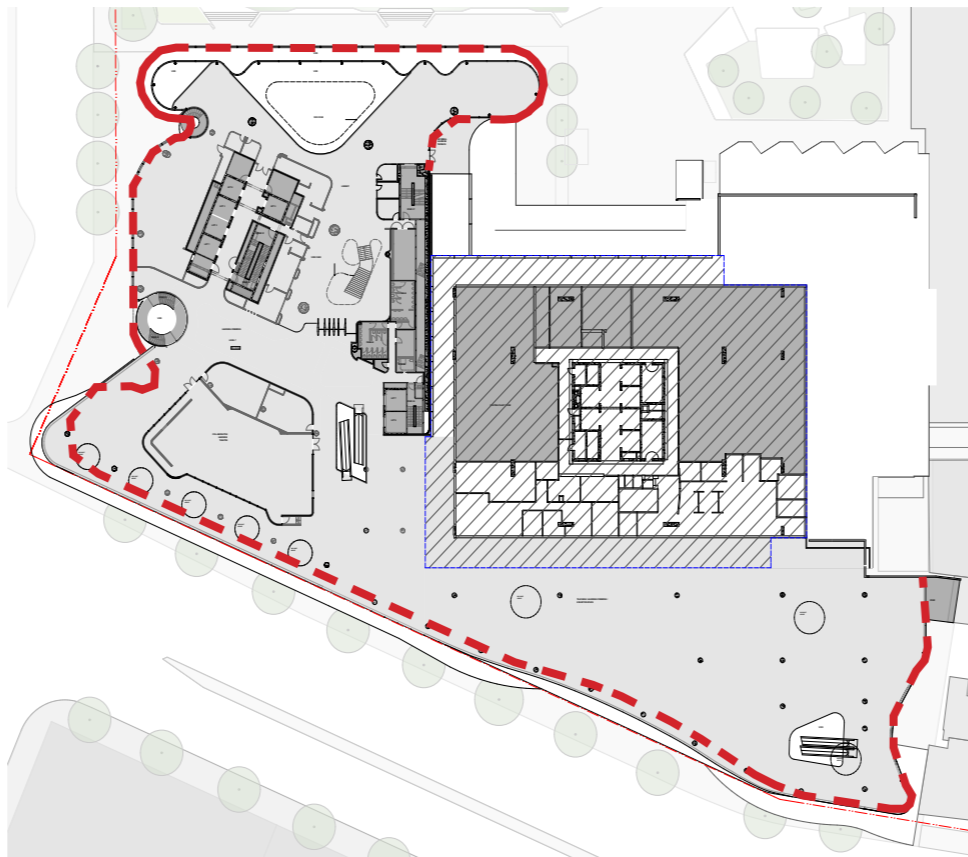
Level 7 - Original DA showing line of Broadway facade



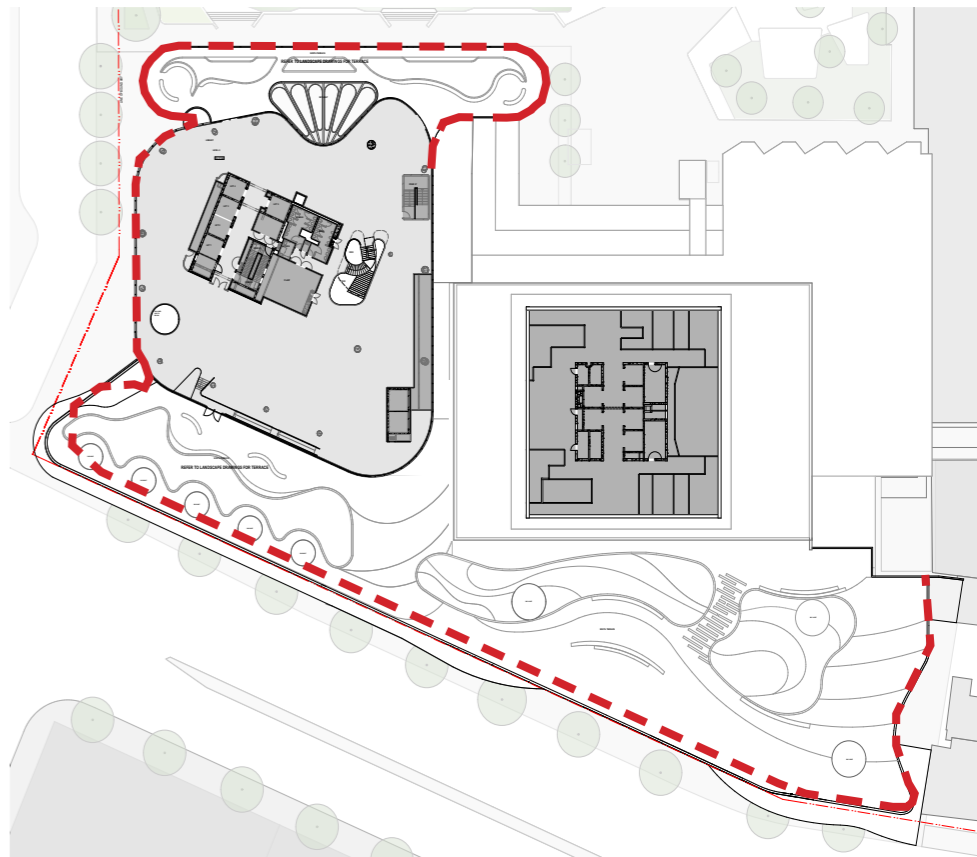
Level 8 - Original DA showing line of Broadway facade



Level 6 - DA Section 96 background, with overlay of original DA facade



Level 7 - DA Section 96 background, with overlay of original DA facade



Level 8 - DA Section 96 background, with overlay of original DA facade



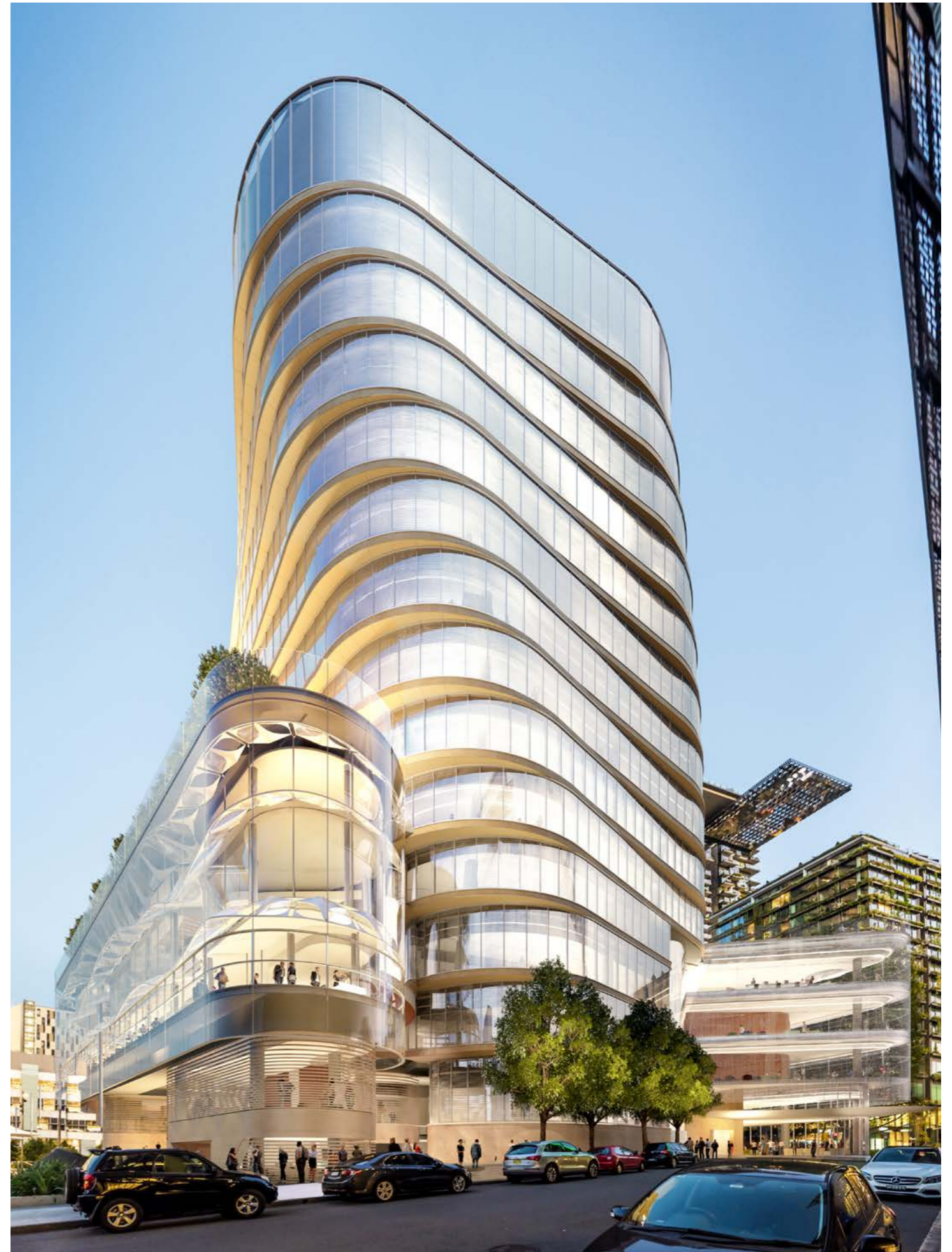
Original DA - Broadway view



Section 96 - Broadway view



Original DA - Jones Street view



Section 96 - Jones Street view