



UTS Central Project
DA Section 96
Landscape Architecture
Design Statement

fjmt studio architecture interiors urban landscape
31/01/2016 – Design Statement – Rev 2

fjmt

Project Name		UTS Central Project	
Project Code		UTSC	
Document Name		Landscape Architecture DA Design Statement	
Document ID		UTSC S96 Statement landscape	
Revision	Date	Comment	Approved
A	01.2017	Issue For Development Application S96	PP

sydney Level 5, 70 King Street, Sydney NSW 2000 Australia **t** +61 2 9251 7077
melbourne Level 2, 56 Hardware Lane, Melbourne VIC 3000 Australia **t** +61 3 9604 2500
oxford Belsyre Court, 57 Woodstock Road, Oxford OX2 6HJ United Kingdom **t** +44 1865 29 2042
london 42–43 Upper Berkeley Street, London W1H 5PW United Kingdom **t** +44 2037 52 6762

w fjmtstudio.com

Francis-Jones Morehen Thorp Pty Ltd ABN 28 101 197 219
Nominated architect Richard Francis-Jones ARB NSW 5301
Registered architect Richard Francis-Jones
Francis-Jones Morehen Thorp Ltd Company no 7384142 ARB 078103G

Contents

- 1.0 Introduction
 - 1.1 Overview
 - 1.2 Landscape Architecture Statement
- 2.0 Ground Plane and Public Domain
- 3.0 Level 8 and 17 Terraces
- 4.0 Tree Management
- 5.0 Schedule of Changes

1.0 Introduction

1.1 Overview

On 23 September 2016, the NSW Department of Planning and Environment granted development consent for State Significant Development 7382 for the University of Technology Sydney (UTS) Central Precinct. The consent was granted for the construction and use of an education building, including:

- site preparation works, including demolition of existing Building 2 to ground level and associated tree removal;
- construction of a new 15 storey Building 2, including a part five storey podium and one level of plant, above an existing two level basement;
- construction of a four storey extension of podium of Building 1 along Broadway;
- public domain improvement works;
- landscaping works;
- staged construction of the two buildings; and
- extension and augmentation of physical infrastructure/ utilities.

UTS are now seeking to submit a Section 96 (1A) application to modify the above consent (SSD_7382). The application seeks approval for the following:

- adjustment of the Broadway and Jones Street façade;
- adjustment of the Jones Street entry near Broadway;
- provision of a pedestrian awning and activated space on the Broadway frontage;
- relocation of the collaborative learning theatres;
- adjustment and increase in the number of skylights;
- provision of laboratory exhaust flues on the roof of the Level 17 Plantroom;
- addition of Superlab on Level 1;
- adjustment to open roof terrace extent;
- reconfiguration of vertical circulation; and
- landscape adjustments including removal of a tree on public land (Jones Street).

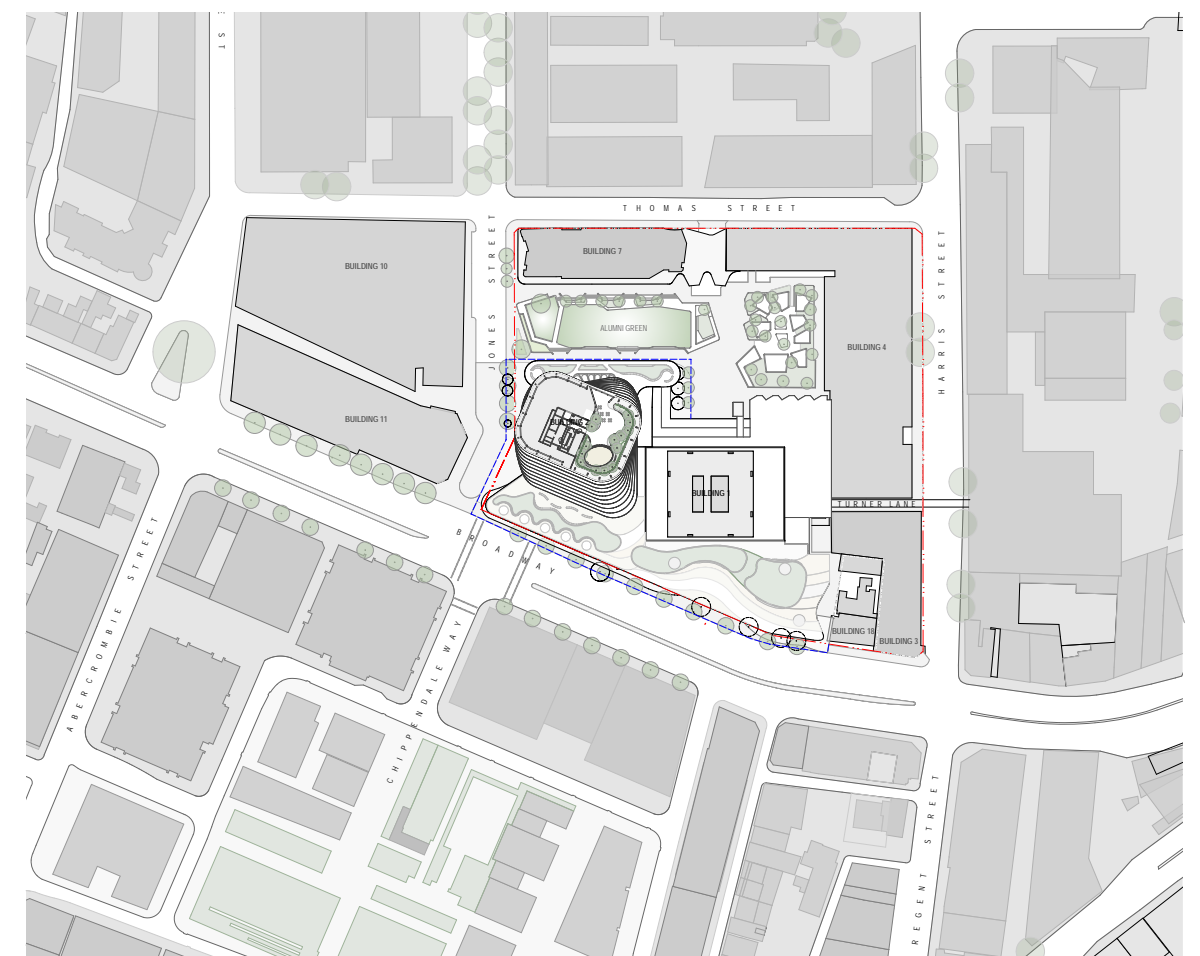
The Broadway Precinct of the UTS City Campus is located entirely within the Sydney Local Government Area on the southern edge of the Sydney Central Business District.

The Broadway Precinct of the UTS City Campus has frontages to Broadway, Thomas, Wattle and Harris Streets, and the Ultimo Pedestrian Network. Jones Street and Harris Street intersect the precinct. It is less than 700 metres from Central Railway Station.

The UTS City Campus occupies approximately 42,000m² of land within the Ultimo Cultural and Education Precinct (UCEP) which includes, among others, the Sydney Institute of TAFE, the Powerhouse Museum and the ABC.



Location Plan



Site Plan

1.1 Landscape Architecture

The proposed urban and landscape design creates a unique sense of place fully integrated with the nature of the architectural proposition, while remaining sensitive to the surrounding public realm and landscape character. The design is based on a sequence of open spaces, which provide functionality for the University Campus and enhance connectivity generally. This series of spaces include the Tower Building 1 Entry Plaza to Broadway, the new western entry and extended plaza to building 2 on the corner of Broadway and Jones Street, The Stairway entry to Level 4 adjacent to Alumni Green and the upper outdoor terraces including level 8 and the level 17 rooftop gardens.

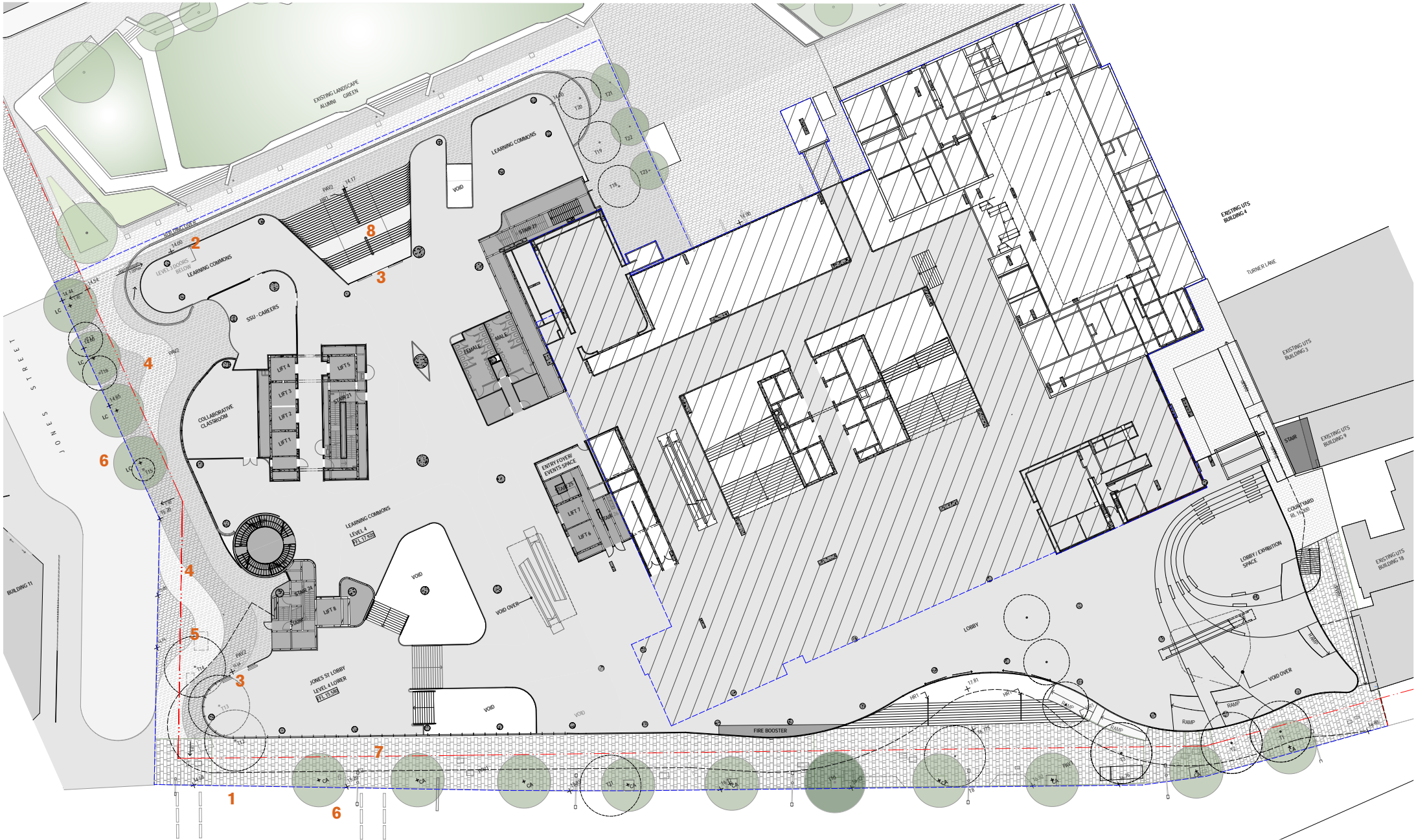


2.0 Ground Plane and Public Domain

2.0 Jones Street Plaza

The generous ground floor lobby plaza has been slightly modified from the previous Development Application to respond to the revised geometry of the facade and location of entry doors. This provided good visibility and access from Broadway and Jones Street and also via the on site links from the adjacent Building 11.

The plaza becomes the welcome mat from Broadway and Jones Street that ultimately brings people into the heart of the green campus.



Legend

- 1 Extent of Works (Blue line)
- 2 Level 3 Entry Doors
- 3 Level 4 Entry Doors
- 4 Radial gradation paving with various finishes
- 5 Jones Street Plaza
- 6 New Street trees
- 7 New Granite paving
- 8 Alumni Green Stair

Public Domain Plan



3.0 Level 8 and Level 17 Terraces

3.1 Level 8 Terraces

The Level 8 terraces have been modified to respond to the revised facade shape. The terraces both north and South will be landscaped to create an outdoor accessible space for student spill out and passive recreation. Raised planters and seating element allowing a planting / seating configuration that complements the corner radii of the building geometry.

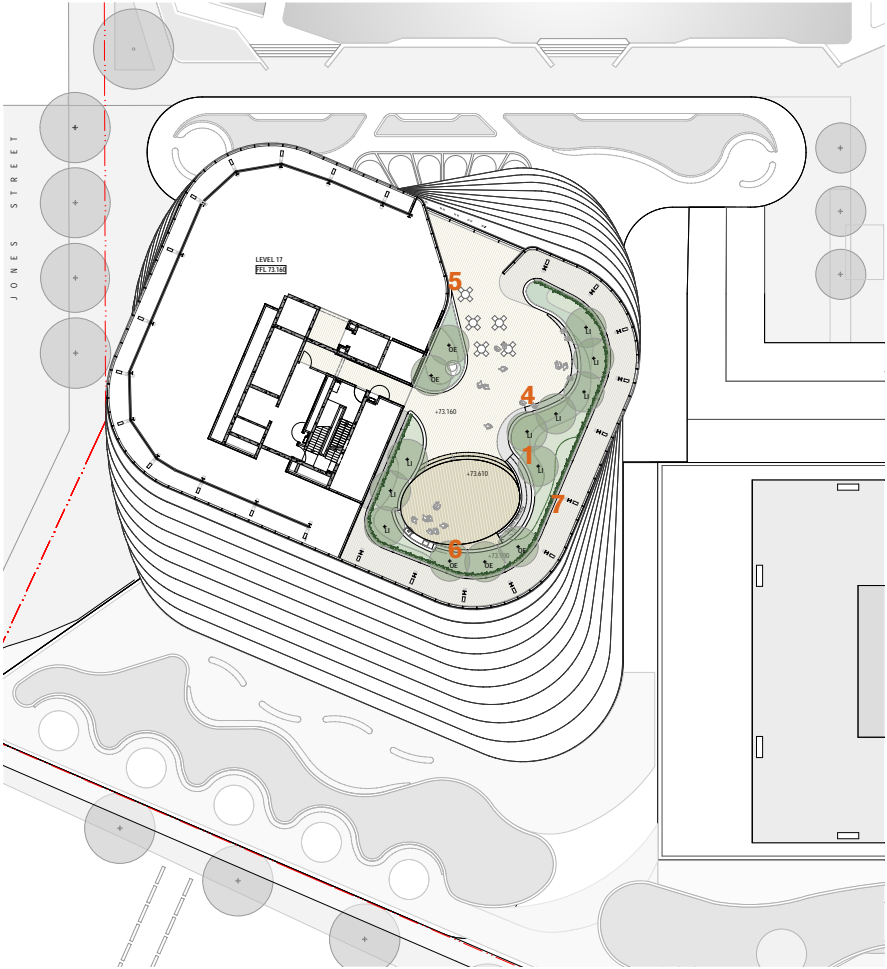
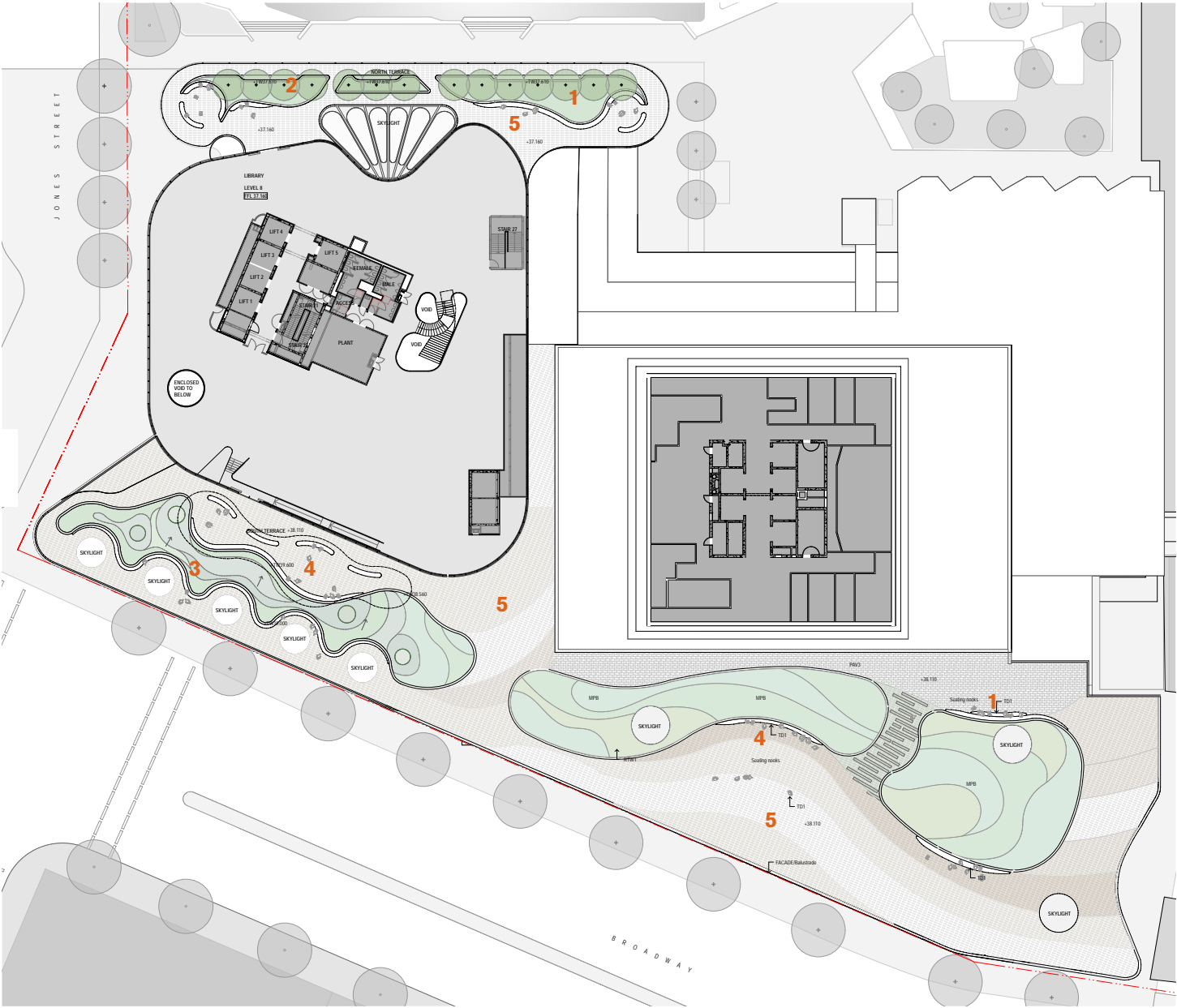
Plant selection on the terraces will be native grasses, groundcovers and small shrubs. The soil formation will be mounded or framed in raised planters to provide a variety of soil depths to ensure a diverse selection of species types. avenue of trees to the north will provide dappled shade.

The Broadway terrace is sheltered from prevailing winds due to the height of the extended Broadway facade and the sloped planter while the north facing Alumni Green terrace receives fantastic northern sun. The shifting tower volume of Building 2 provides a variety of shaded seating opportunities as the sunlight moves across the tower.

3.2 Level 17 rooftop garden

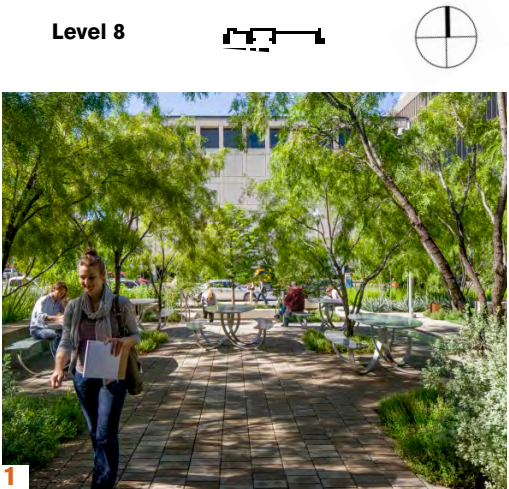
The Level 17 courtyard terrace has been modified to respond to the revised facade shape to the north. This provides a summit experience that extends and showcases the built form geometry of Building 2. The northern views over UTS to Alumni Green is further enhanced with the landscape curvilinear forms leading from the facade.

The space is envisaged to provide an array of vegetation to take full advantage of the open to the sky, including trees and a vertical green trellis that runs parallel l to the facade creating a space with a green backdrop.



Legend

- 1 Raised planters with integrated seating
- 2 Shade Trees
- 3 Sloped Raised planter with integrated seating
- 4 Seating
- 5 Paving with various finishes
- 6 Decking
- 7 Green Trellis

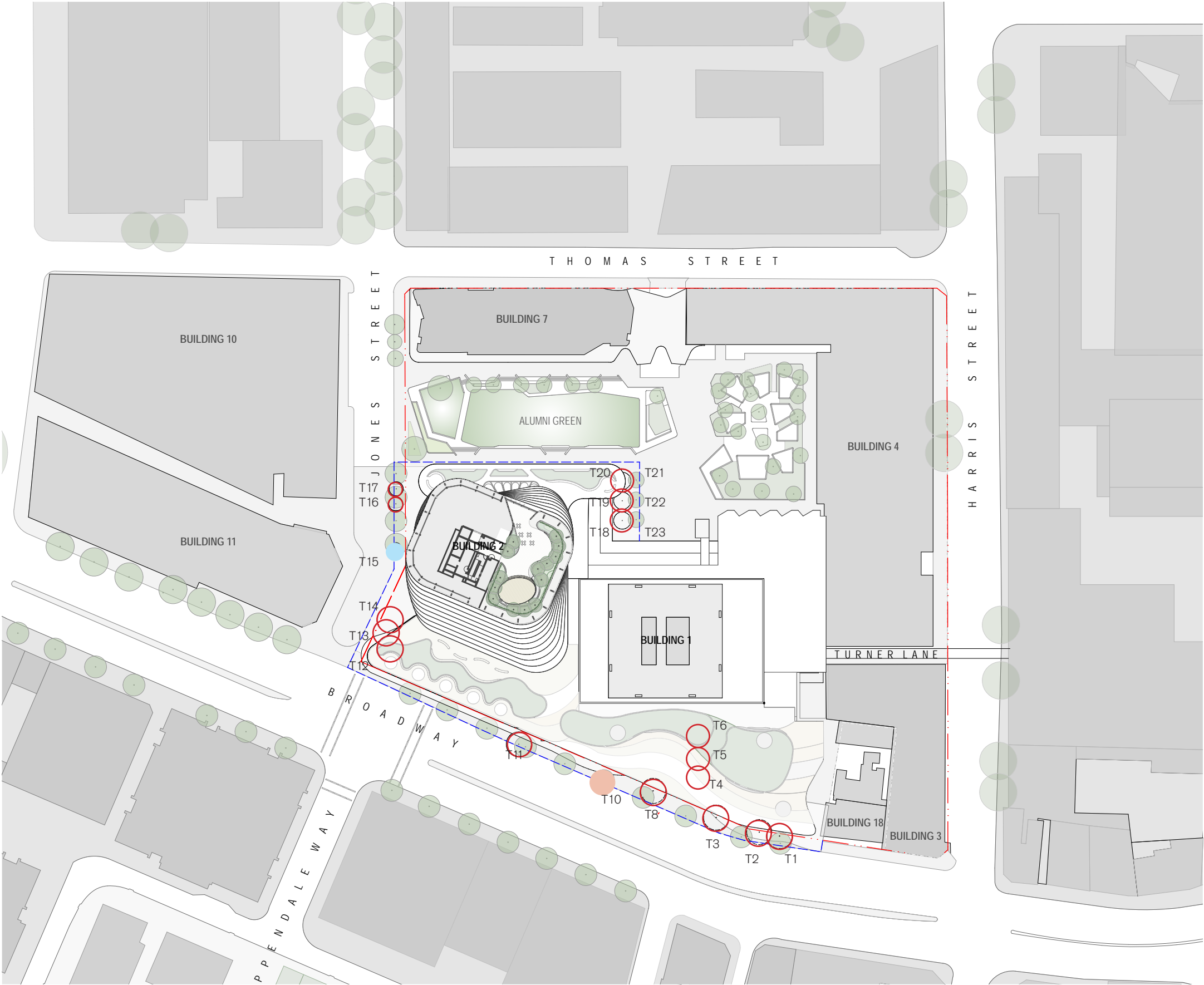


4.0 Tree Management

Tree T15 is proposed to be removed to provide for the new and upgraded avenue of street trees in accordance with the current City of Sydney street tree Masterplan and new tree pit detailing in technical guidelines.

Note: For existing tree schedule and condition report, refer to the Arboricultural Assessment report.

- Existing Tree to be retained and protected in accordance with Arboricultural Assessment
- Existing Tree to be removed as per previous Development Application
- Tree Identification Number
- Existing tree to be removed as part of S96 application
- New Street tree planting
- (Subject to council public domain submission)



5.0 Schedule of Changes

Drawing Numbers	Revision Number	Location	Change Description
6011, 6011-1	B	Level 4	Ground plane adjusted to respond to the revised position of Broadway facade moved to the boundary
	B	Level 4	Ground plane adjustment to respond to the revised Broadway /Jones St facade and entry. door location.
6012, 6012-1	B	Level 8	Amended landscape terrace geometry to respond to the adjustment to facade and Skylight extent..
	B	Level 8	Change to level of Terrace to Align with Phase 2 floor slab.
6013, 6013-1	B	Level 17	Revised vegetation and green vertical trellis to respond to the roof now being open to the sky.
	B	Level 17	Revised landscape geometry to respond to the revised facade shape to the North..



architecture
interiors
urban
landscape

Sydney
Melbourne
Oxford
London