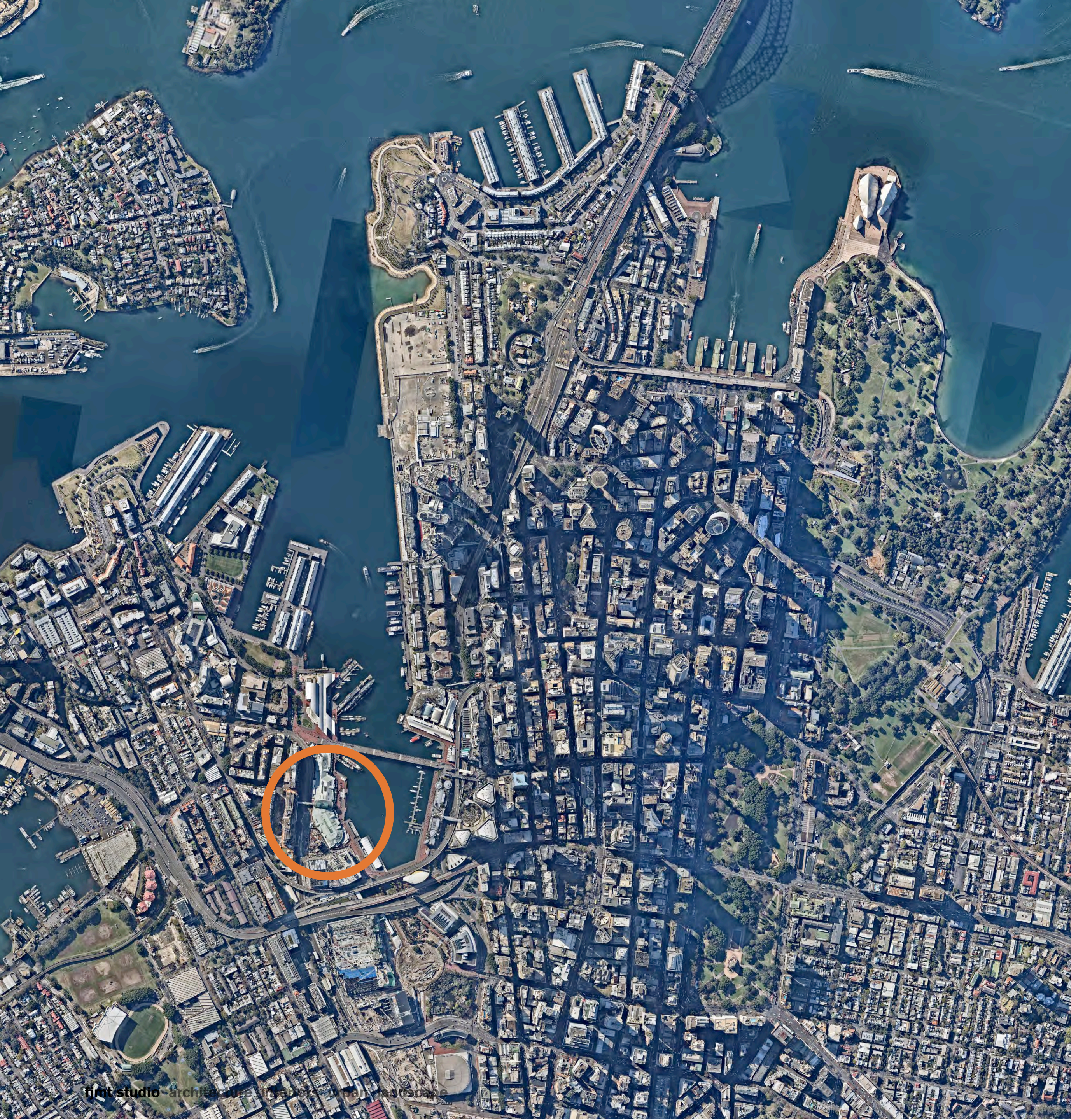


Harbourside

09 10 2015



Harbourside: Existing



tjmt
JERDE

mirvac
DRP 09 10 2015



from airport
13 km
20 mins by car
45 mins by train

FUTURE TOURISM LOOP



Sofitel Darling Harbour
Hotel: 2017

fjmt
JERDE



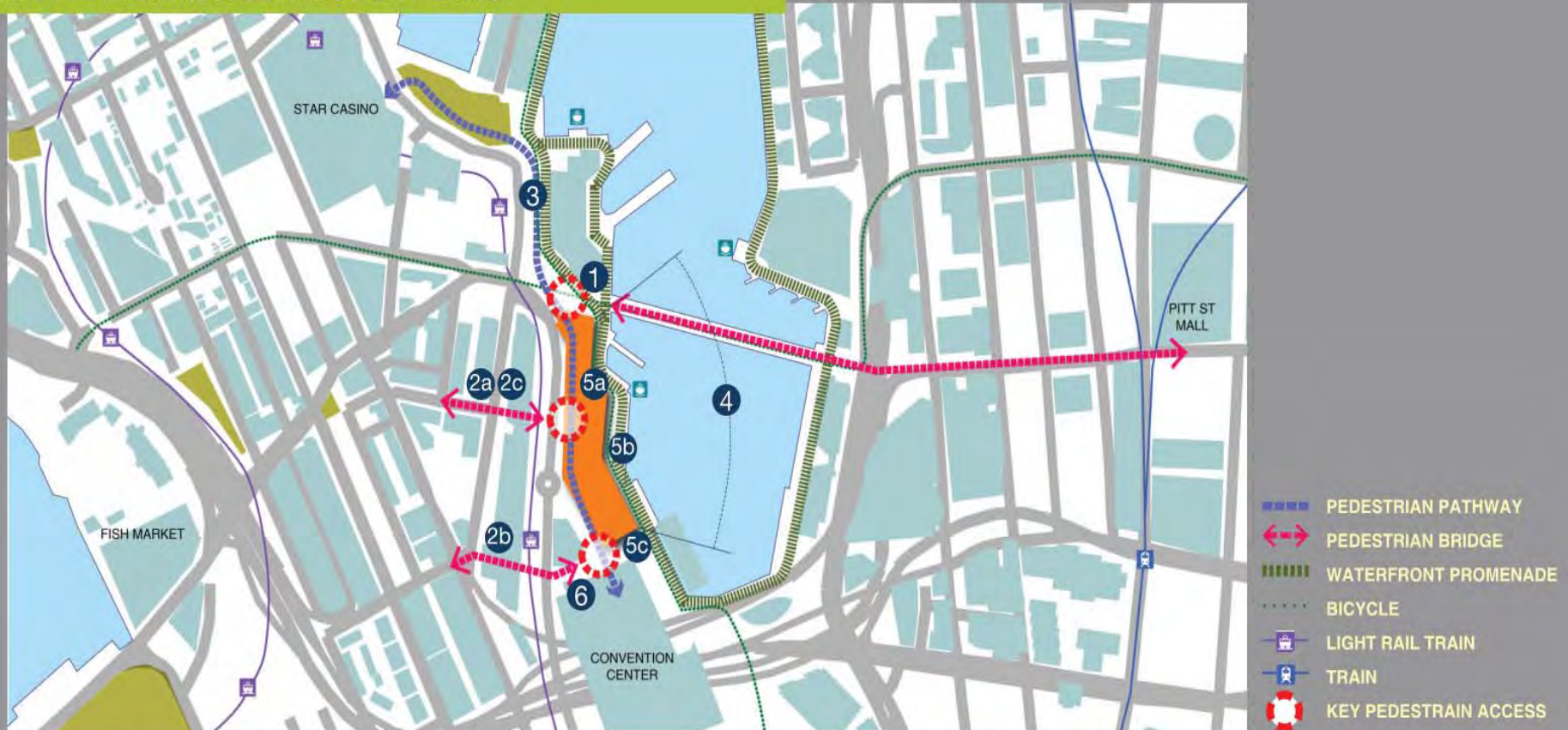
ICC Sydney
Convention Centre: 2016



ICC Sydney
Exhibition Centre: 2016

mirvac
DRP 09 10 2015

SITE OPPORTUNITIES: CONNECTION POINTS



1 Project pedestrian introduction node/ entry compliance. Precinct- user connection: gathering of pedestrian activities from multiple program user at different grade level.

2a Reinforce the public realm connection from LRT to surrounding neighbourhood. To improve visual and experiential opportunity.

2b Provide opportunity from direct link to future hotel.

2c Increase view to community corridor.

3 Pathway connects Star casino/ North precinct to the convention centre/ south precinct. It's also part of the waterfront promenade.

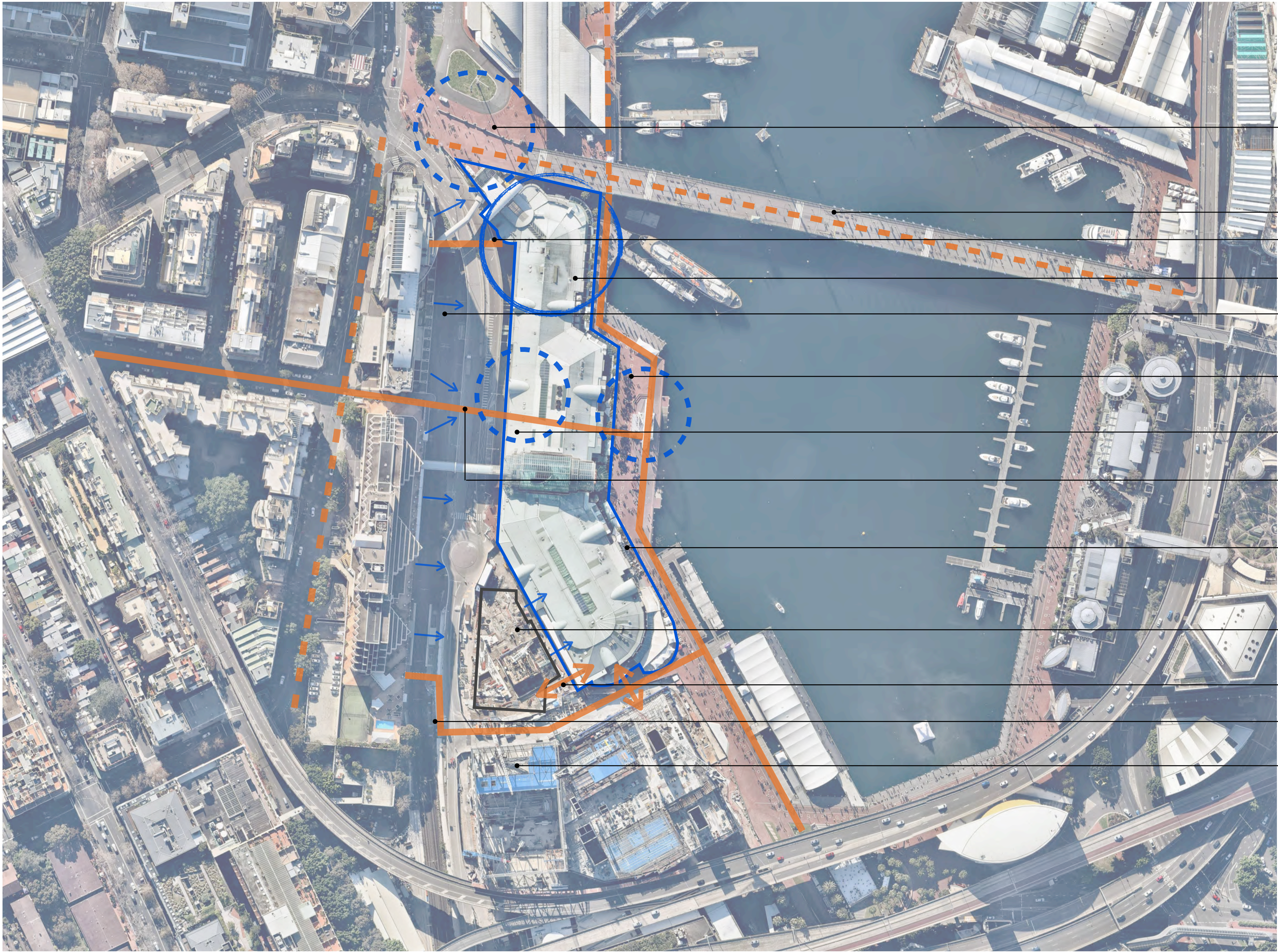
4 Embraces the waterfront/ wharf view and activities.

5a Underutilised waterfront activities/ area create stronger connection with water for pedestrian.

5b Opportunity to create a water experience with proper reasoning.

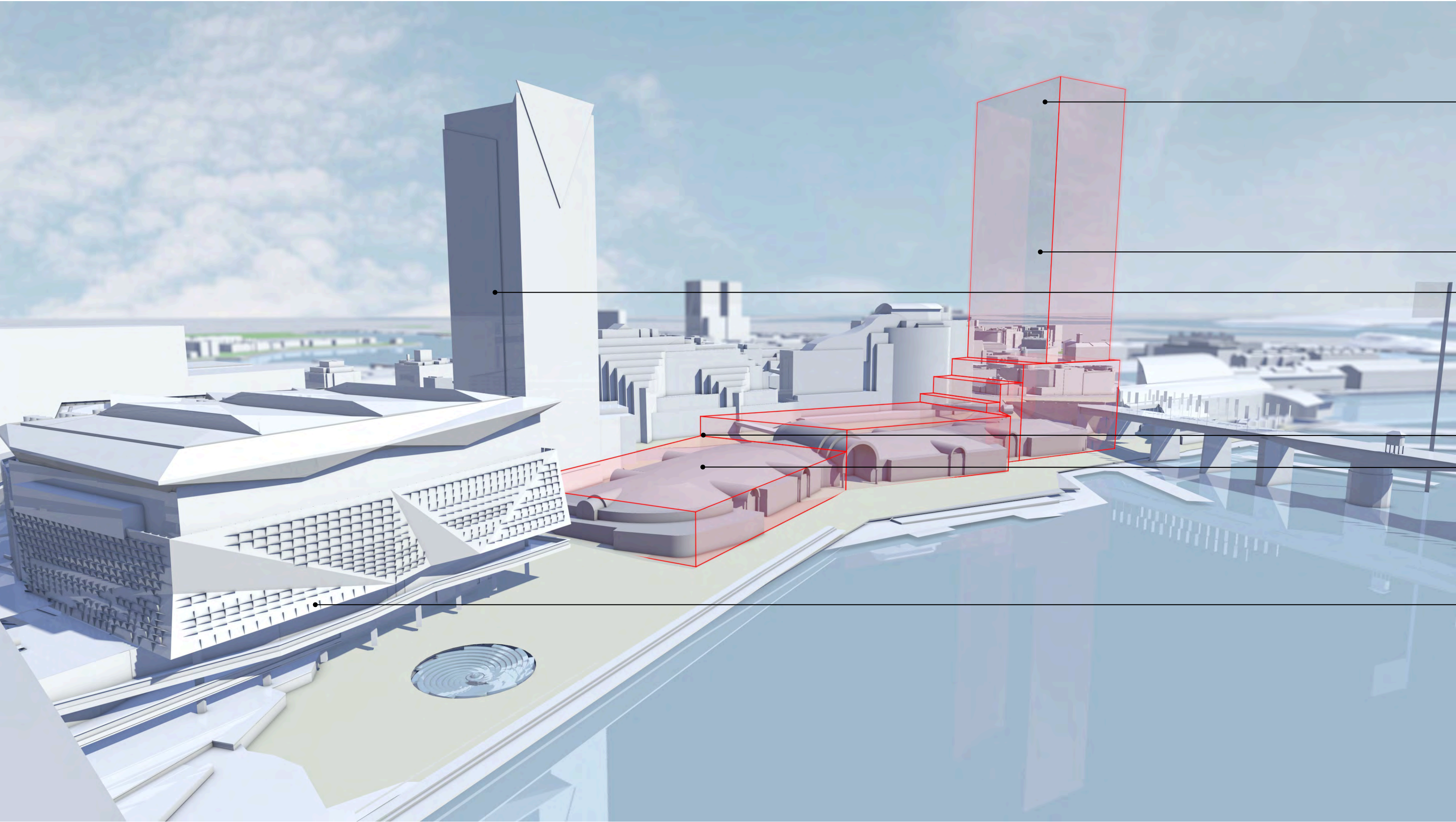
5c Create gathering/ event opportunity as connection node and rest stop after exhibition hall.

6 Create stronger visual and physical connection to gallery and conference gathering/ event.



- Node point:
Opportunity for improved relationship to Pyrmont Bridge and Australian National Maritime Museum
- Opportunity to enhance connections across Cockle Bay
- Opportunity for Darling Drive access and frontage, with connection across Darling Drive
- Tower opportunity
- Consideration of views from adjacent building required
- Node point:
Public realm opportunity with improved Pyrmont / waterfront connection
- Node point:
Opportunity for improved relationship with Pyrmont community
- Opportunity for Bunn Street connection
- Opportunities for activated frontages along waterfront
- ICC Hotel
(under construction)
- Improved connections to ICC, ICC Hotel and wider SICEEP precinct
- Pedestrian connection to light rail, via Harbourside Place
- ICC
(under construction)

site analysis and opportunities diagram



indicative height only

indicative tower envelope

ICC Hotel
(under construction)

nominal retail envelope

existing Harbourside Shopping centre shown in grey

ICC
(under construction)

nominal development envelope