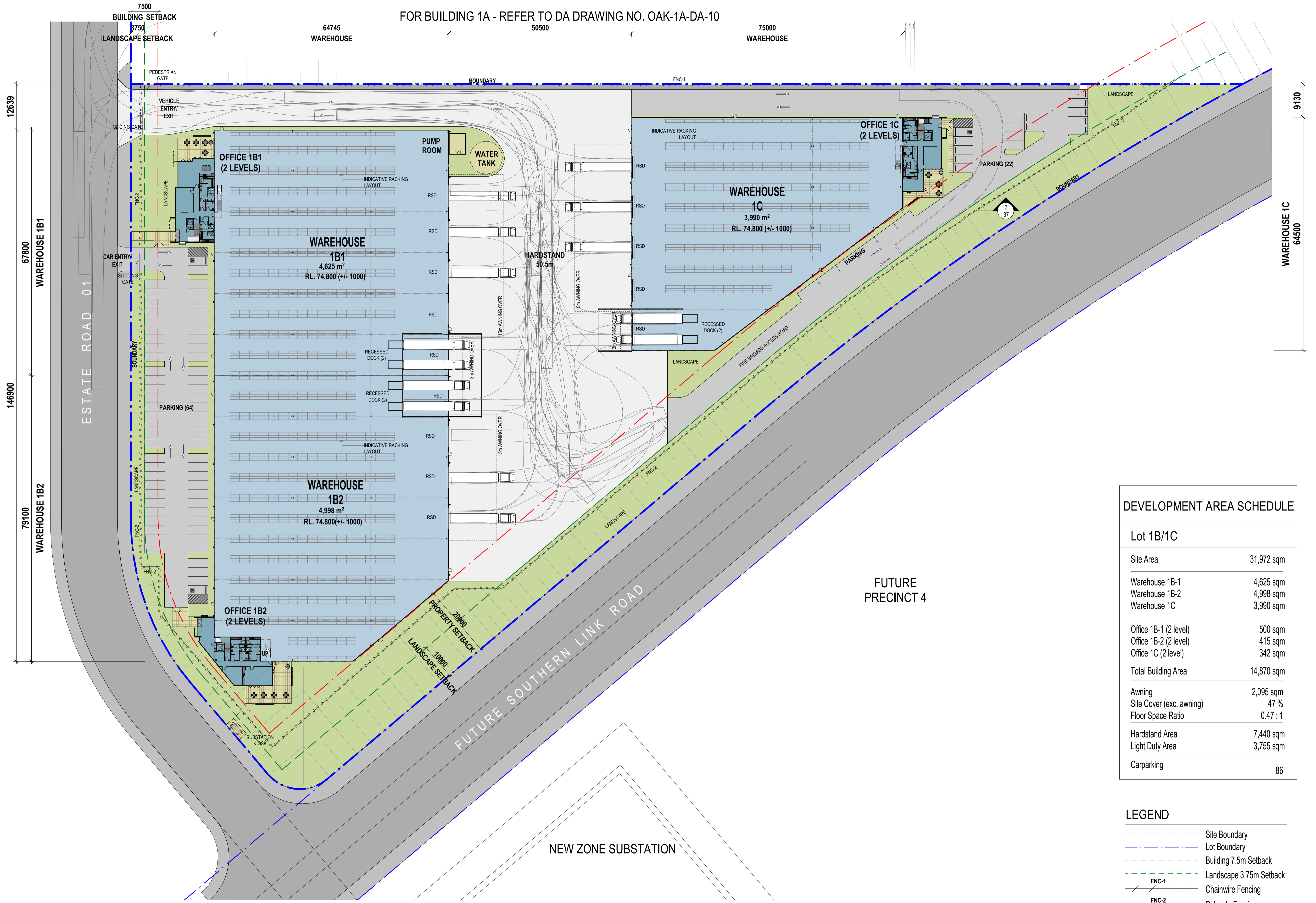
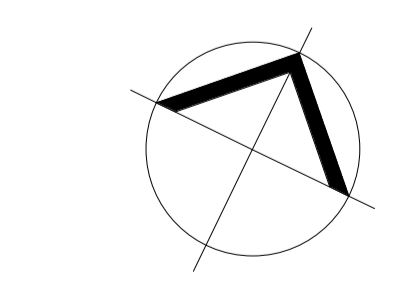


FOR BUILDING 1A - REFER TO DA DRAWING NO. OAK-1A-DA-10

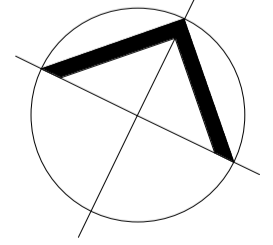
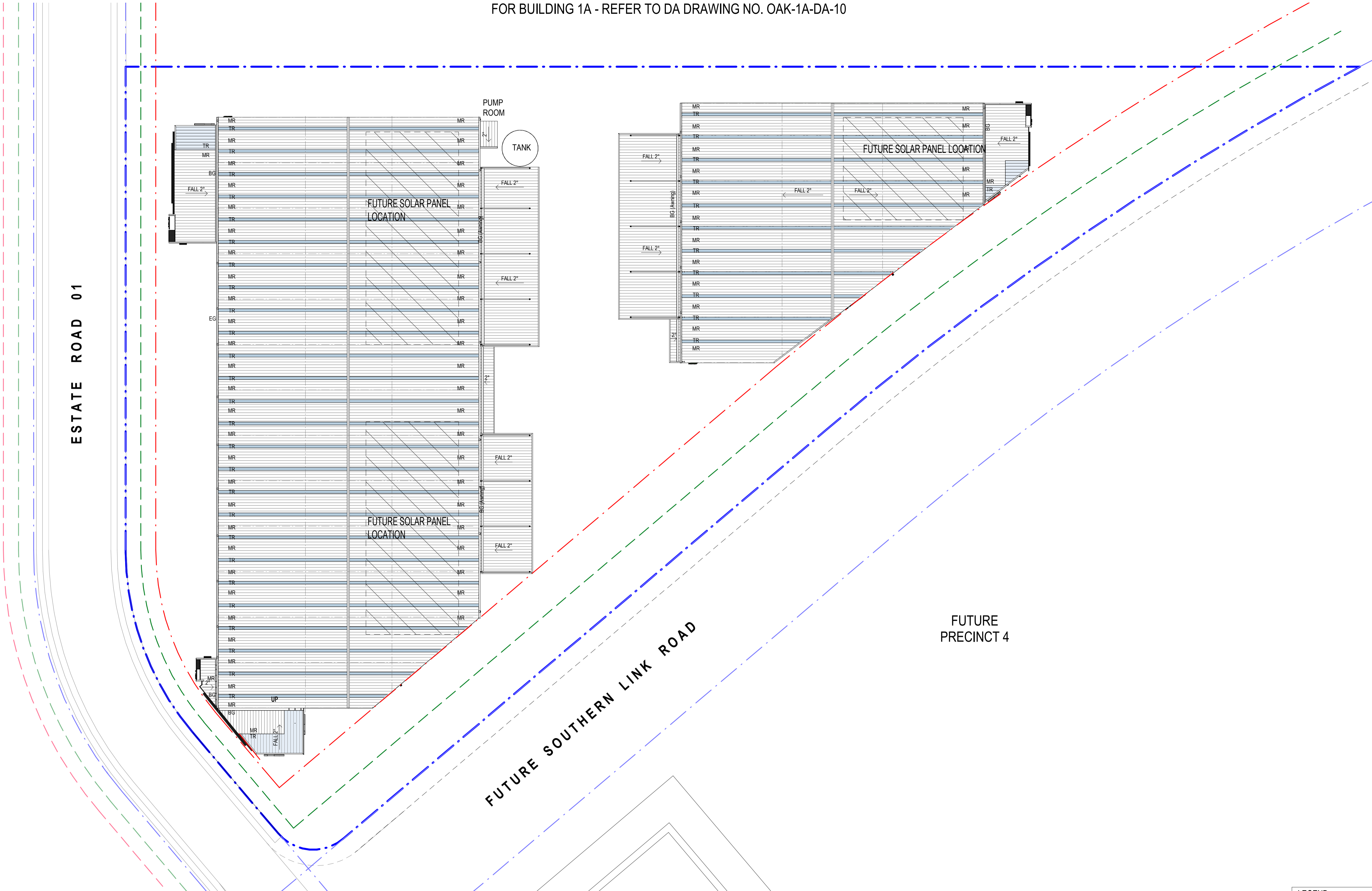


DEVELOPMENT AREA SCHEDULE	
Lot 1B/1C	
Site Area	31,972 sqm
Warehouse 1B-1	4,625 sqm
Warehouse 1B-2	4,998 sqm
Warehouse 1C	3,990 sqm
Office 1B-1 (2 level)	500 sqm
Office 1B-2 (2 level)	415 sqm
Office 1C (2 level)	342 sqm
Total Building Area	14,870 sqm
Awning	2,095 sqm
Site Cover (exc. awning)	47 %
Floor Space Ratio	0.47 : 1
Hardstand Area	7,440 sqm
Light Duty Area	3,755 sqm
Carparking	86

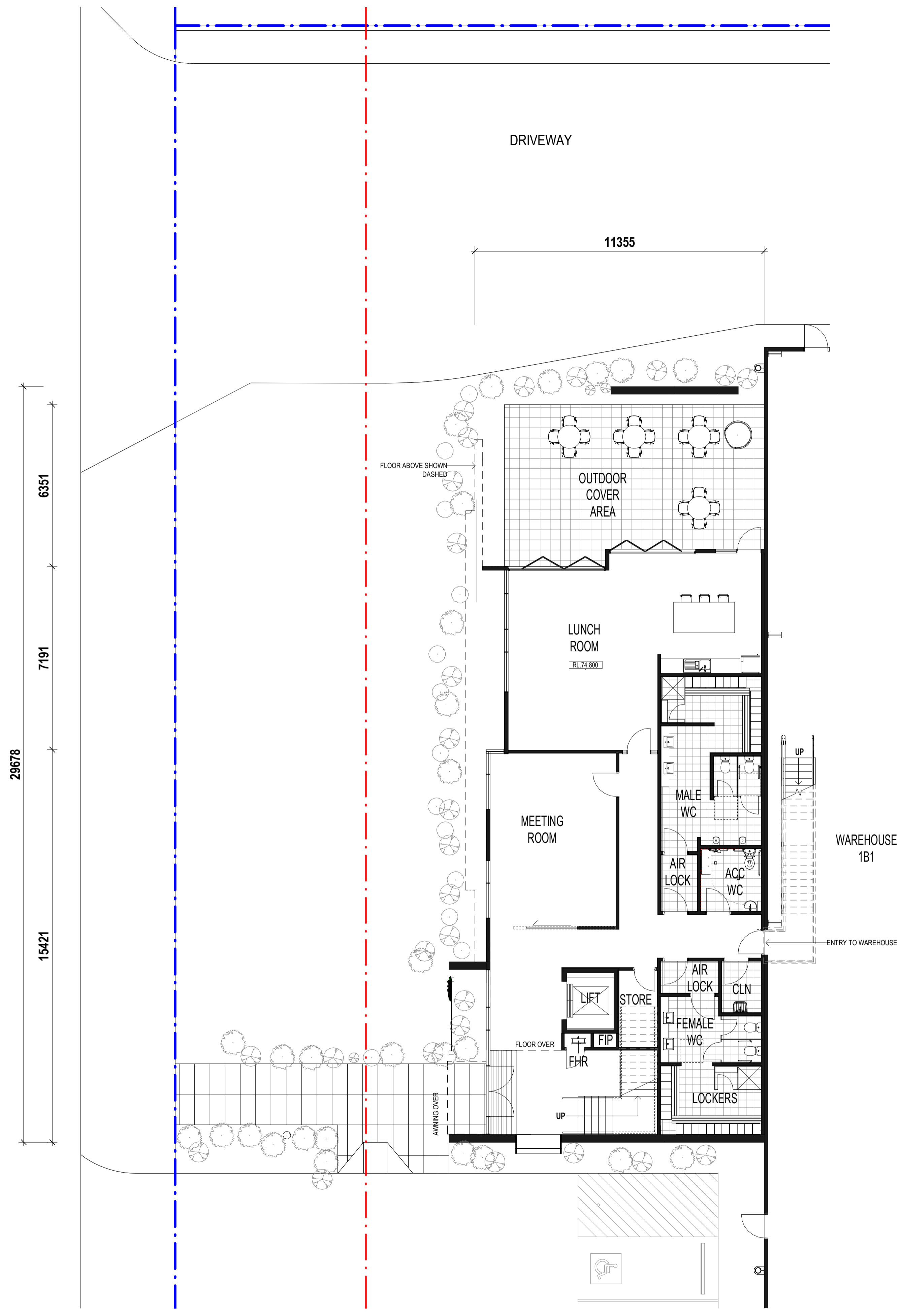
LEGEND	
	Site Boundary
	Lot Boundary
	Building 7.5m Setback
	Landscape 3.75m Setback
	Chainwire Fencing
	Palisade Fencing
	Retaining Wall



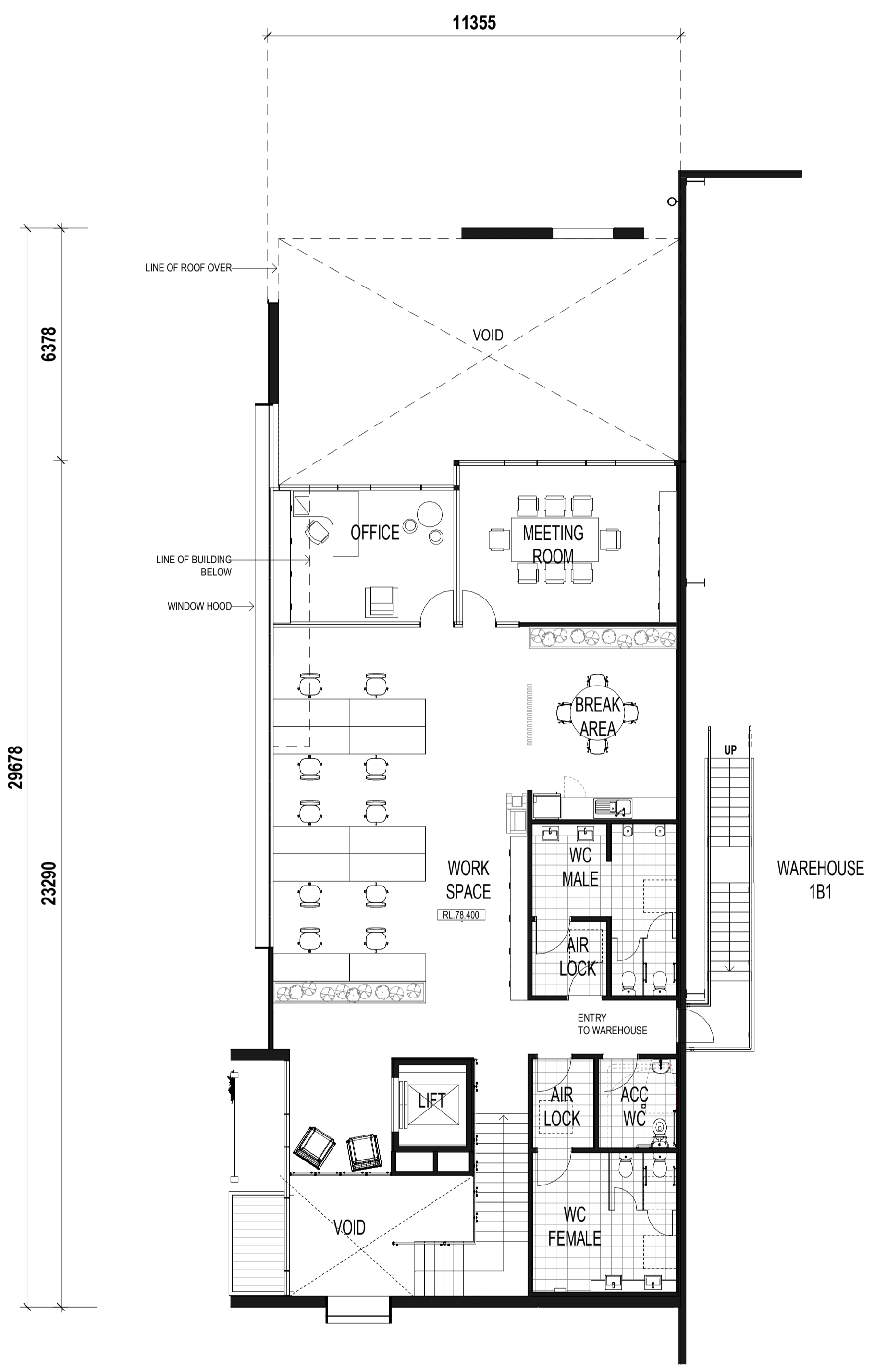
FOR BUILDING 1A - REFER TO DA DRAWING NO. OAK-1A-DA-10



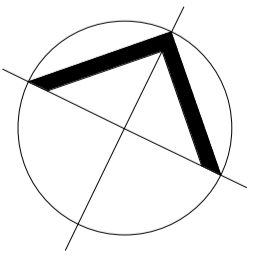
LEGEND	
BG	Box Gutter
EG	Eaves Gutter
MR	Metal Roof Sheeting
TR	Translucent Sheeting
EJ	Expansion Joint

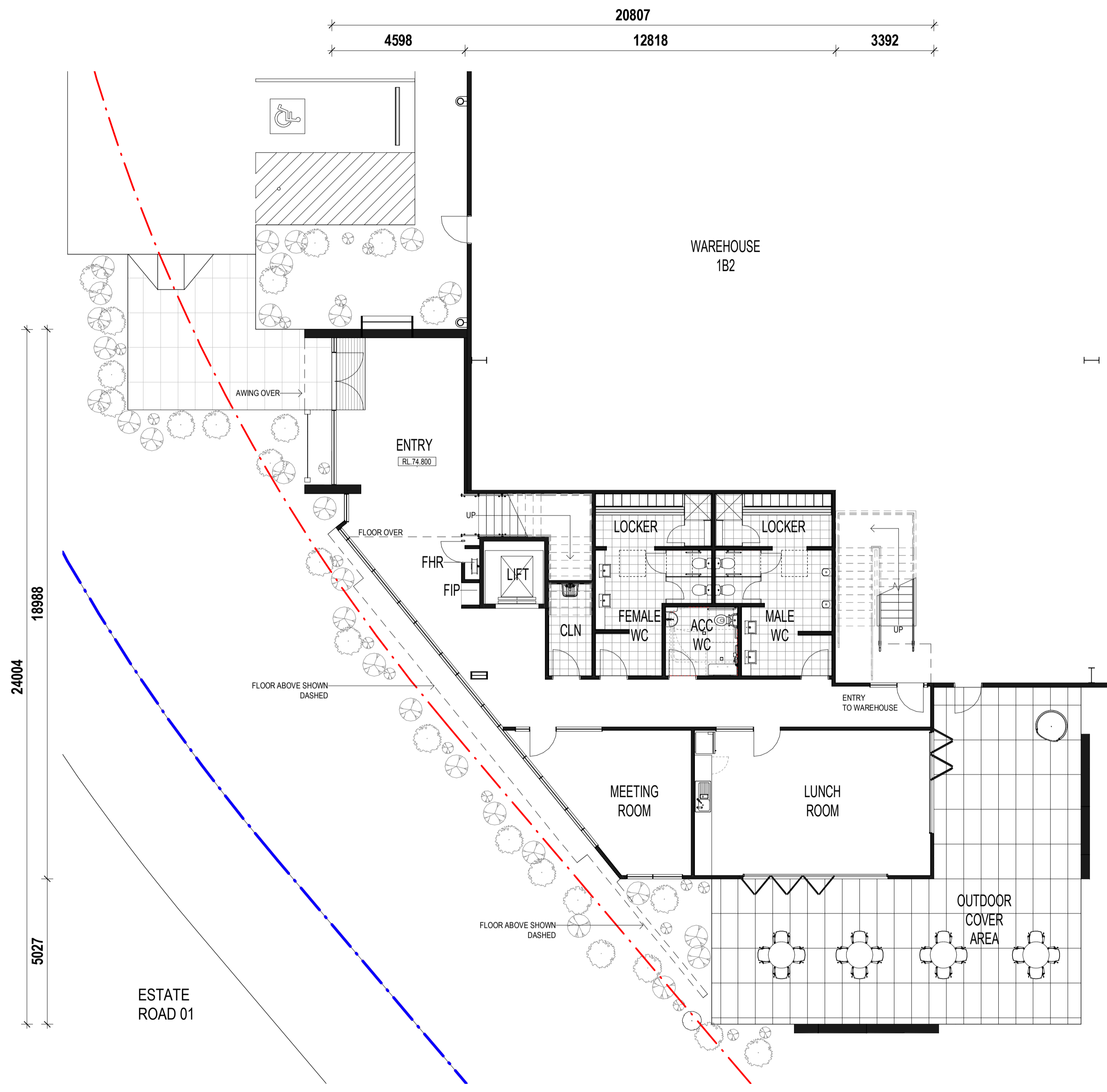


1 OFFICE 1B1 - GROUND FLOOR PLAN 1 : 100

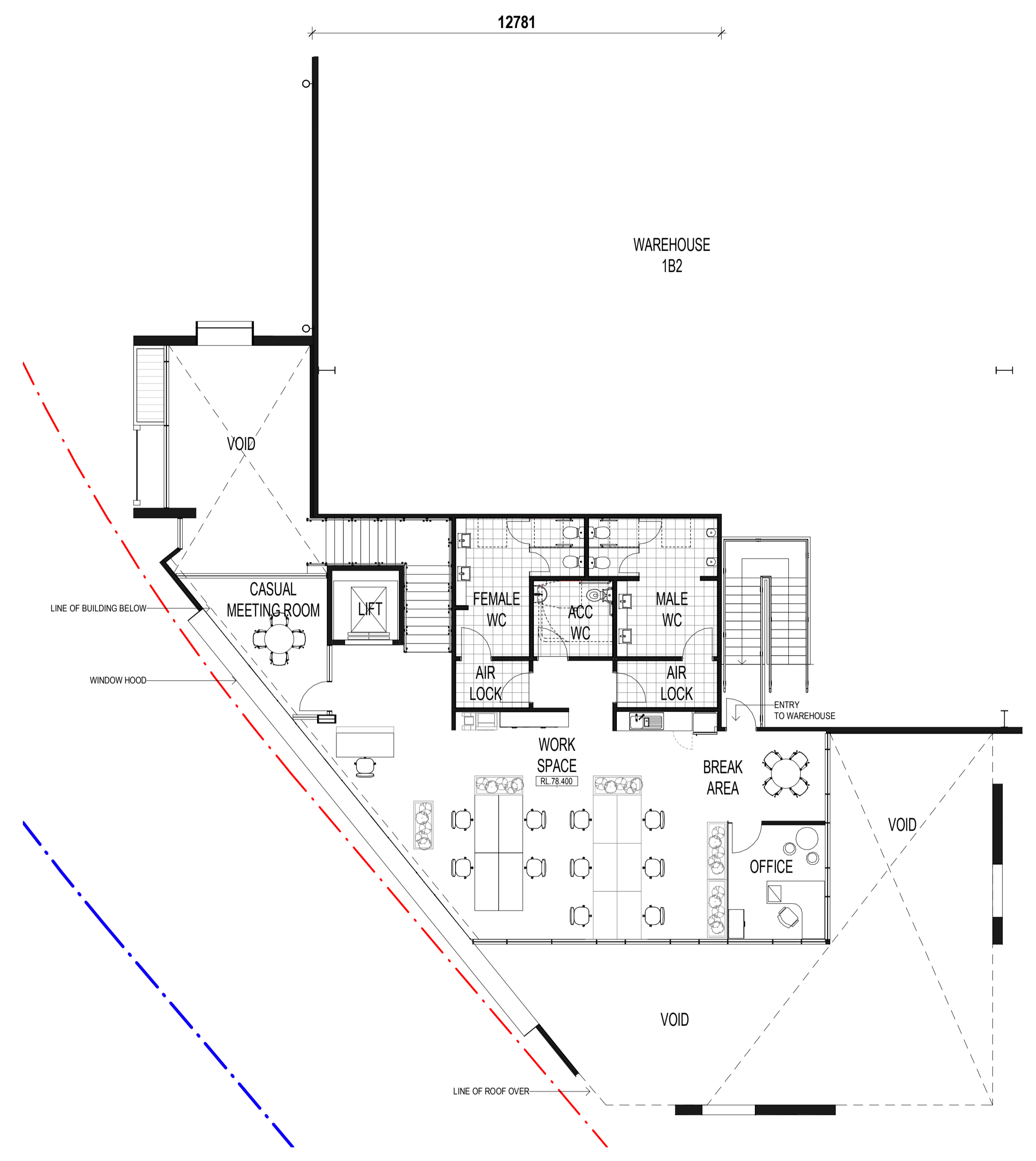


2 OFFICE 1B1 - FIRST FLOOR PLAN 1 : 100

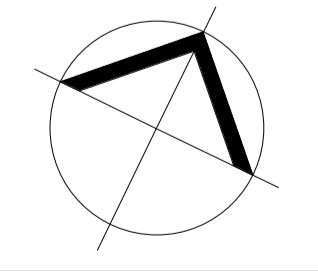




1 OFFICE 1B2 - GROUND FLOOR PLAN 1 : 100

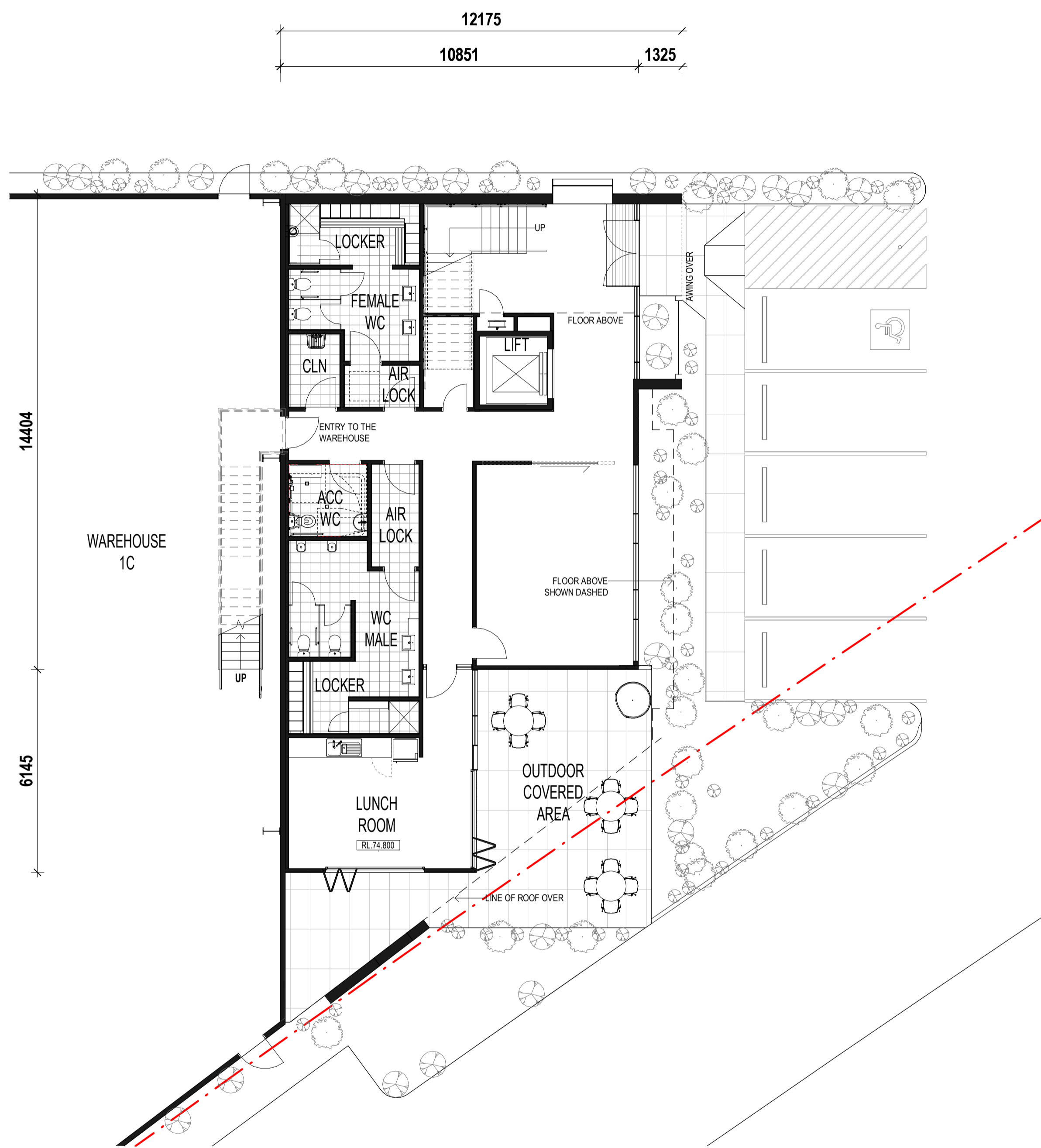


2 OFFICE 1B2 - FIRST FLOOR PLAN 1 : 100

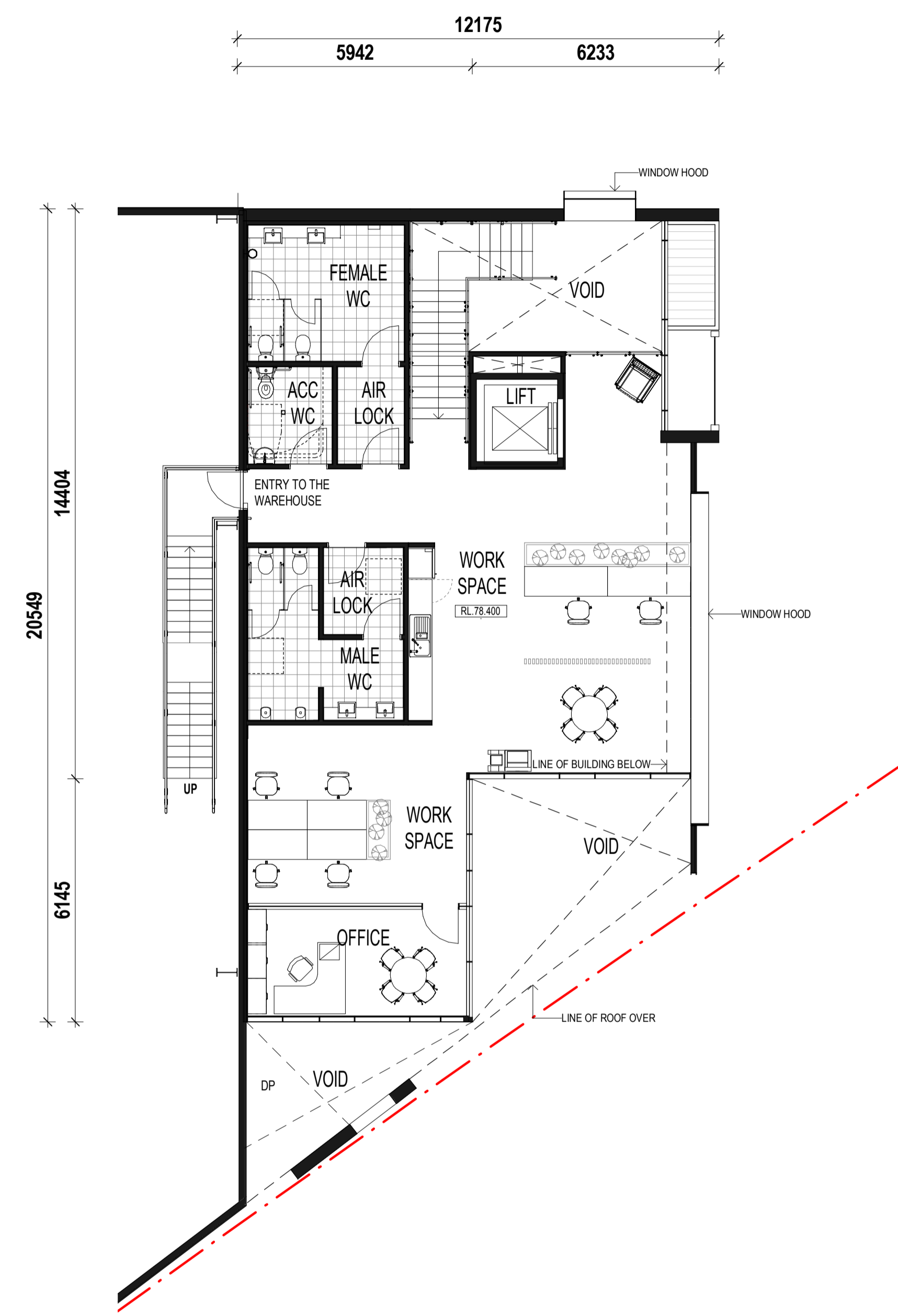


PRELIMINARY

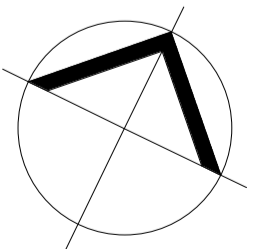


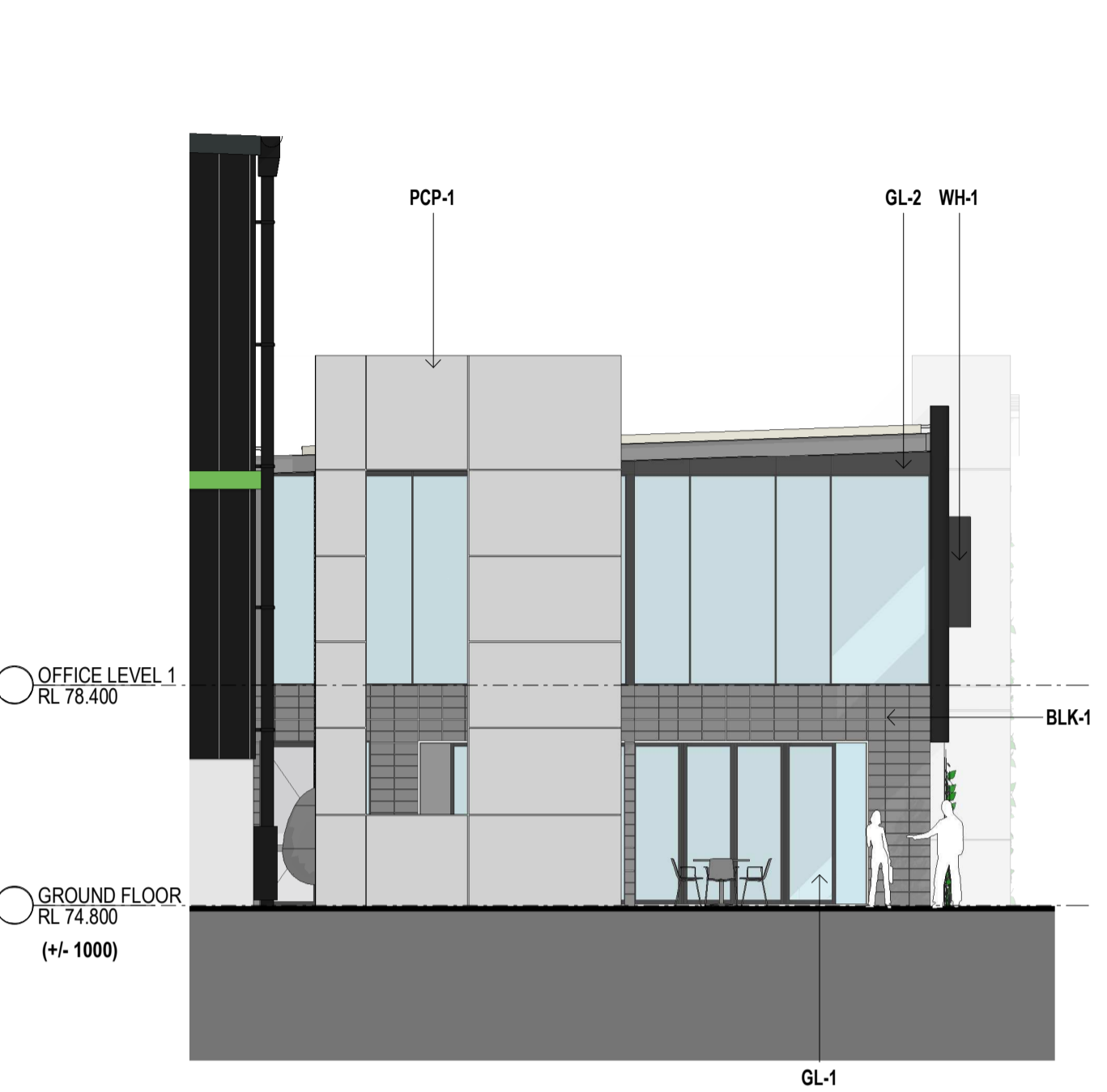


1 OFFICE 1C - GROUND FLOOR PLAN 1:100

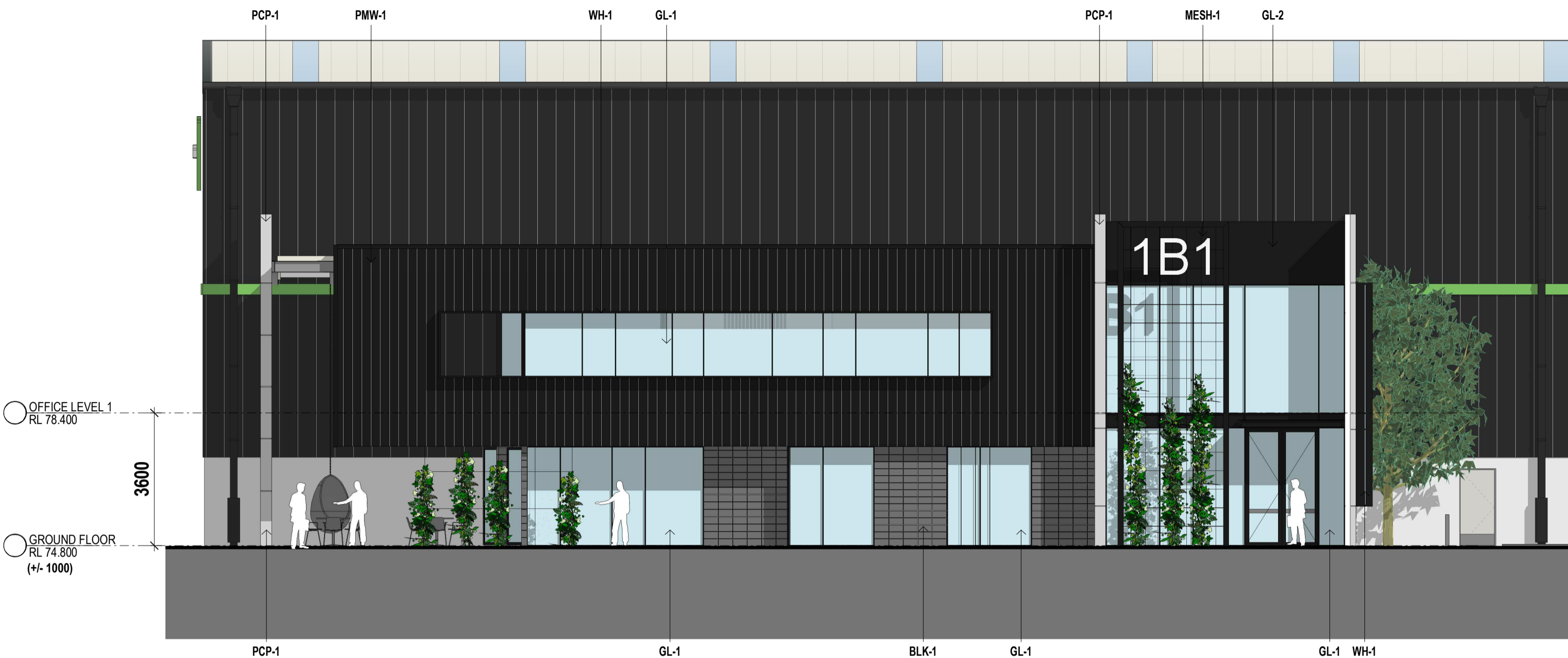


2 OFFICE 1C - FIRST FLOOR PLAN 1:100

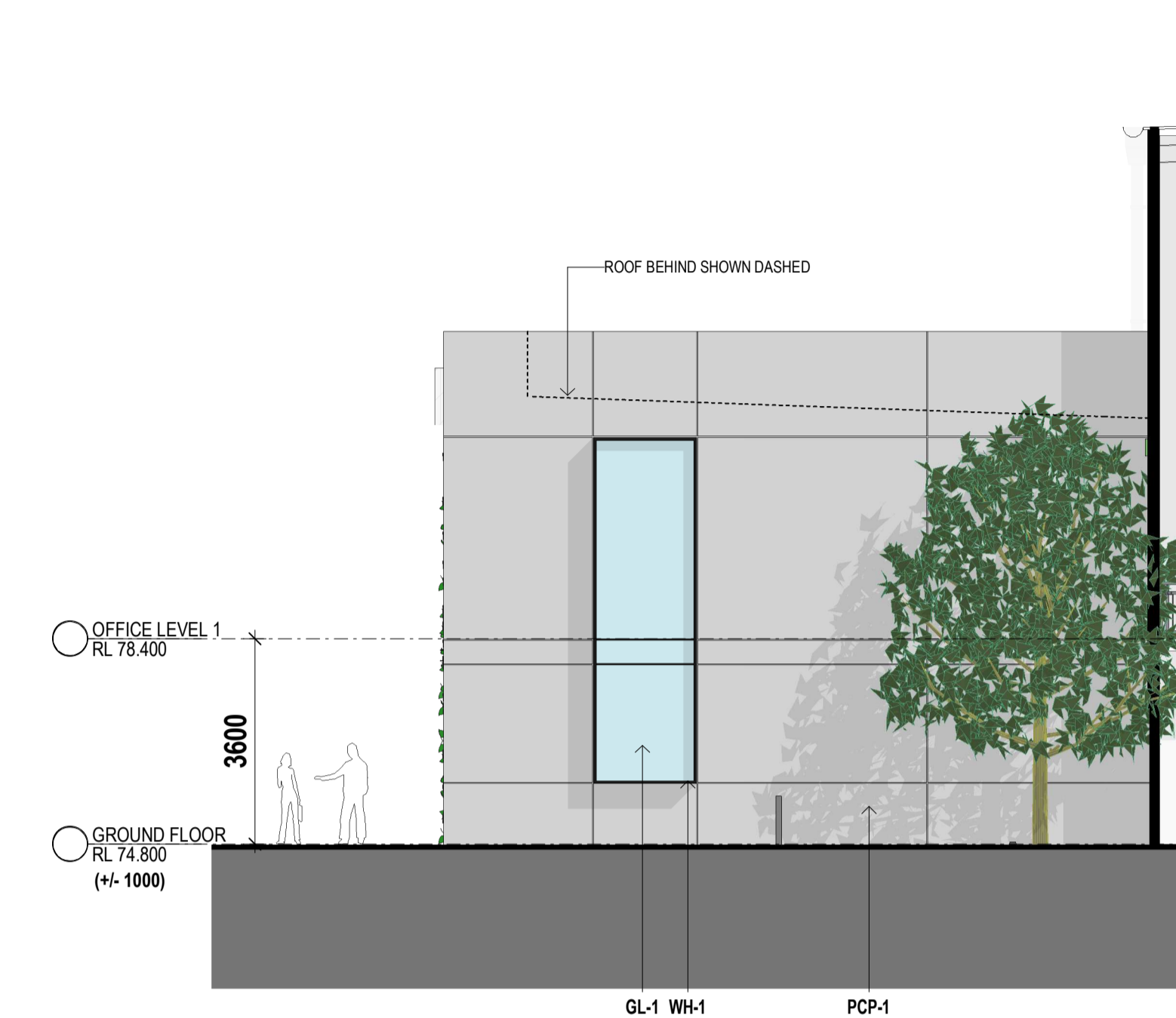




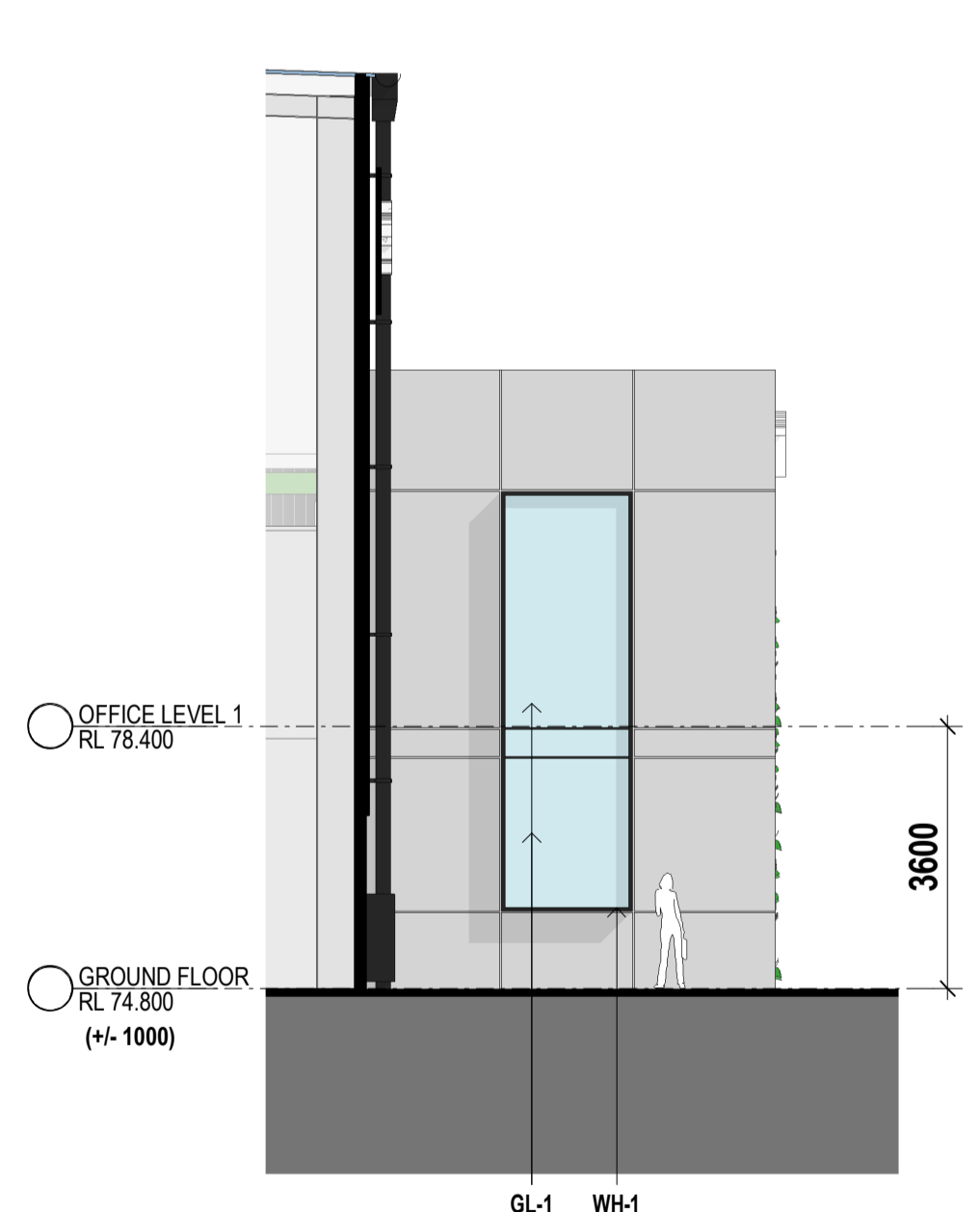
1 OFFICE 1B1 - ELEVATION NORTH 1 : 100



2 OFFICE 1B1 - ELEVATION WEST 1 : 100



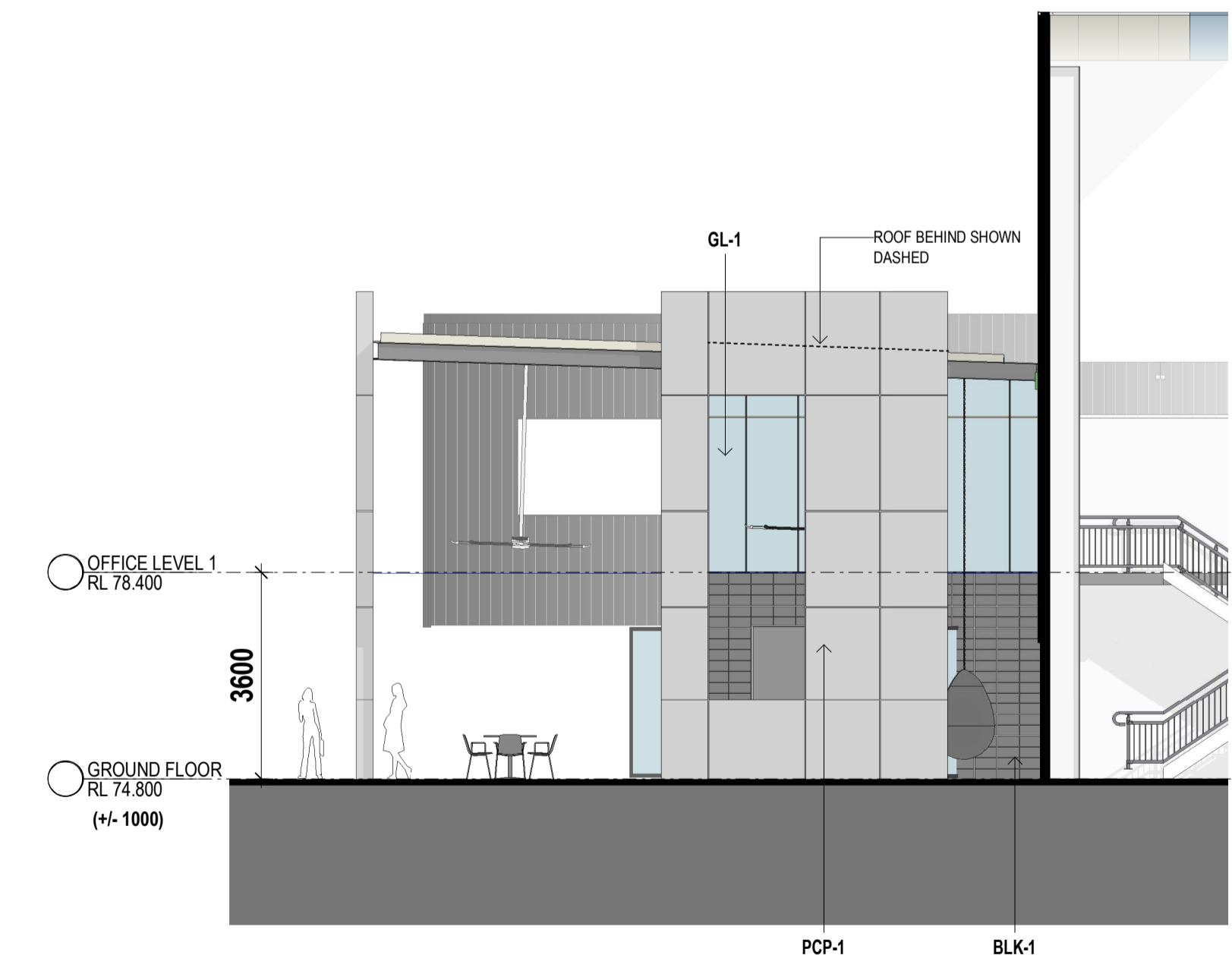
3 OFFICE 1B1 - ELEVATION SOUTH 1 : 100



4 OFFICE 1B2 - ELEVATION NORTH 1 : 100



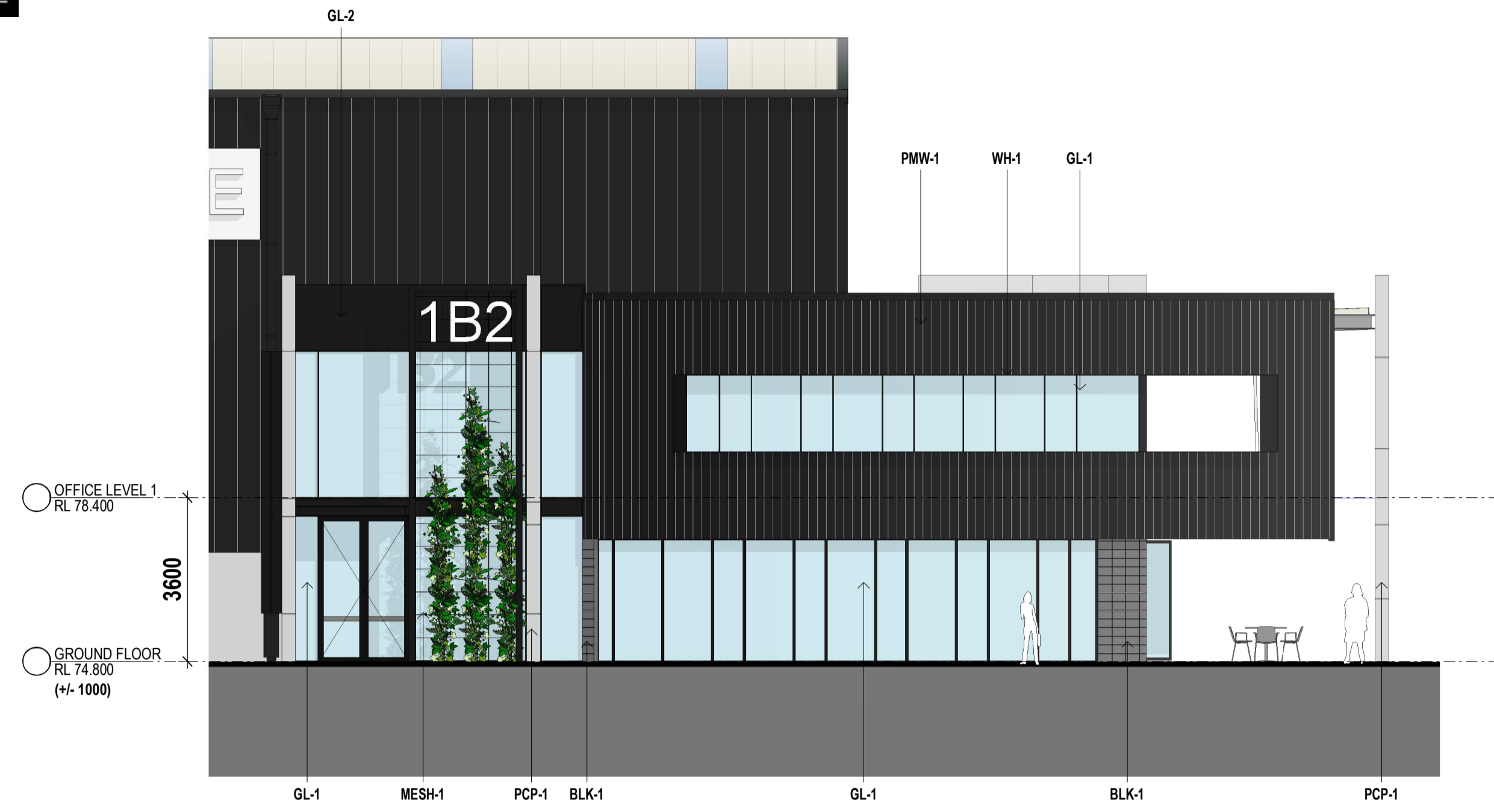
5 OFFICE 1B2 - ELEVATION EAST 1 : 100



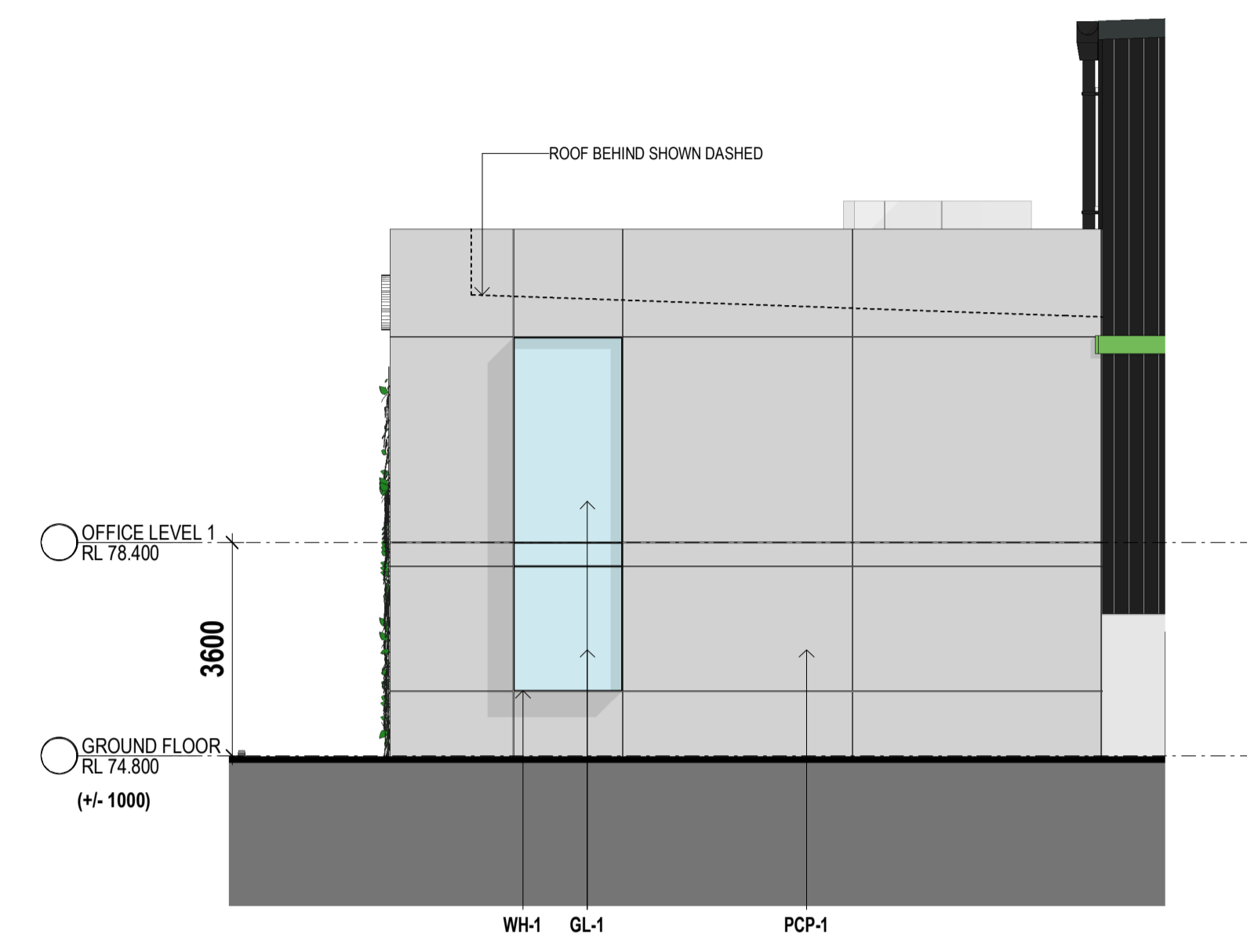
6 OFFICE 1B2 - ELEVATION SOUTH 1 : 100

INDICATIVE EXTERNAL FINISHES LEGEND

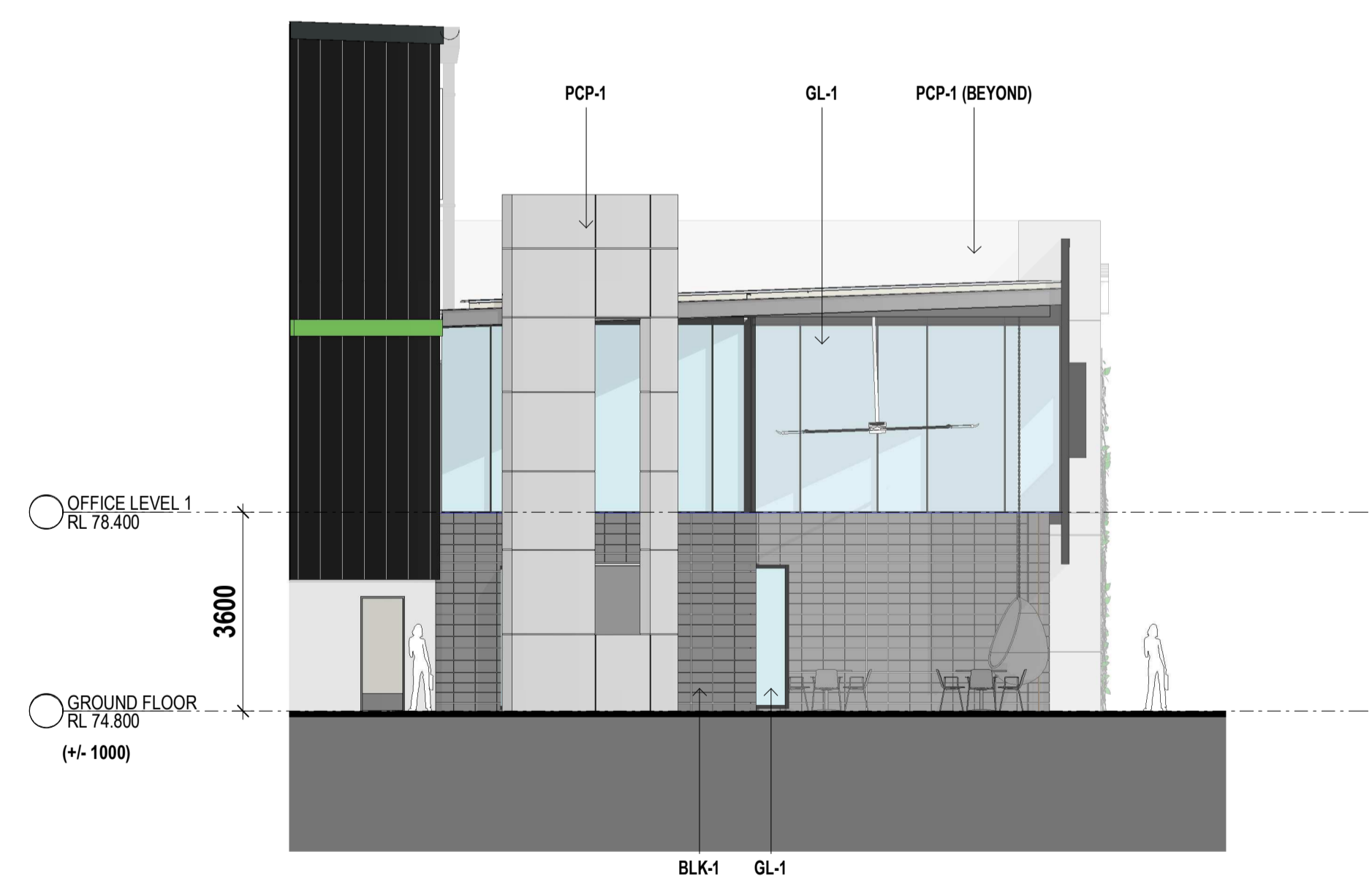
- BLK-1** STACKED BOND BLOCKS GREY
- GL-1** CLEAR GLAZING - LIGHT GREY TINT OR SIMILAR
- GL-2** PREFINISH FC SHEET
- MDR-1** METAL DECK ROOFING COLORBOND - SURFIMST
- MRS** METAL ROLLER SHUTTER
- MESH-1** STAINLESS STEEL MESH IN METAL FRAME
- PCP-1** PRE-CAST CONCRETE PANEL OFF FORM CONCRETE FINISH
- PCP-2** PRE-CAST CONCRETE PANEL PAINT FINISH
- PMW-1** PREFINISHED METAL WALL SHEET CLADDING COLORBOND - MONUMENT FINISH (OR SIMILAR)
- PMW-2** PREFINISHED METAL WALL SHEET CLADDING COLORBOND - GOODMAN GREEN FINISH
- TRS-1** TRANSLUCENT ROOF SHEET OPAL COLOUR
- TRS-2** TRANSLUCENT ROOF SHEET OPAL COLOUR (OR SIMILAR)
- WH-1** STEEL WINDOW HOOD COLORBOND MONUMENT FINISH (OR SIMILAR)



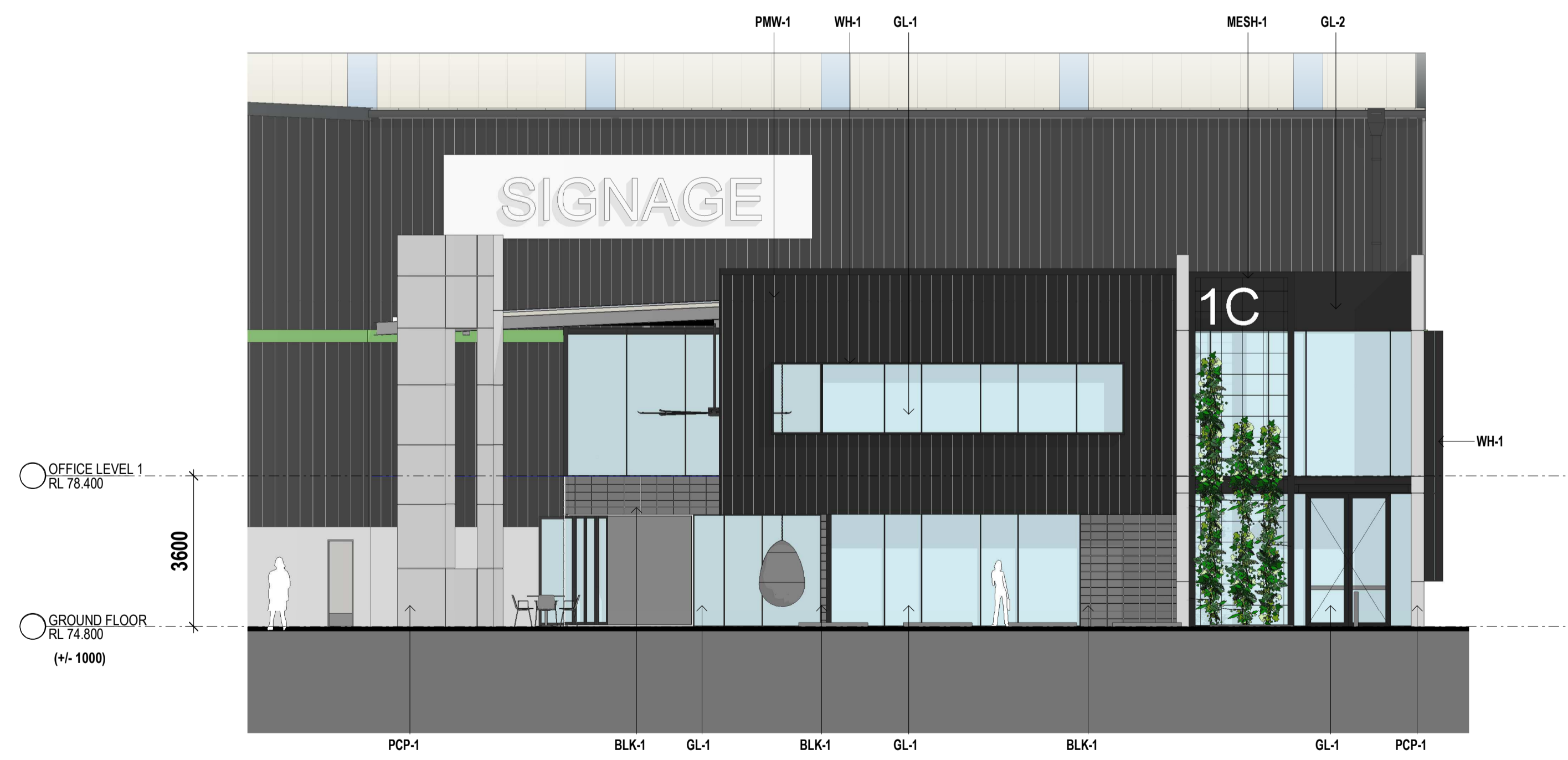
1 OFFICE 1B2 - ELEVATION WEST 1 : 100



2 OFFICE 1C - ELEVATION NORTH 1 : 100



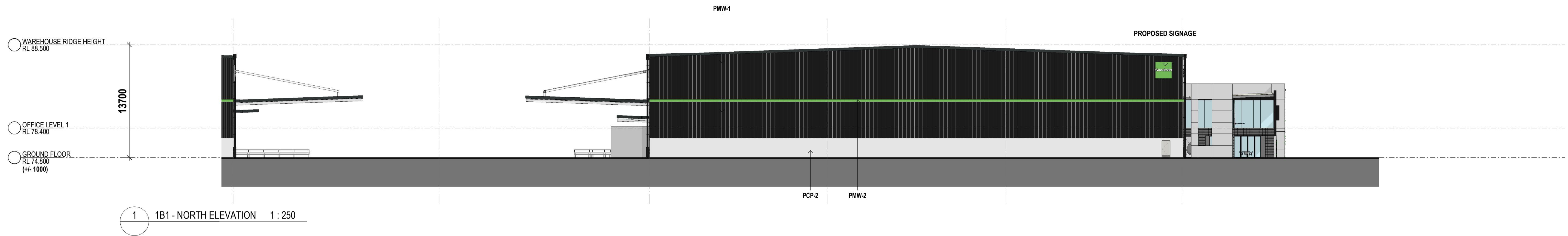
3 OFFICE 1C - ELEVATION SOUTH 1 : 100



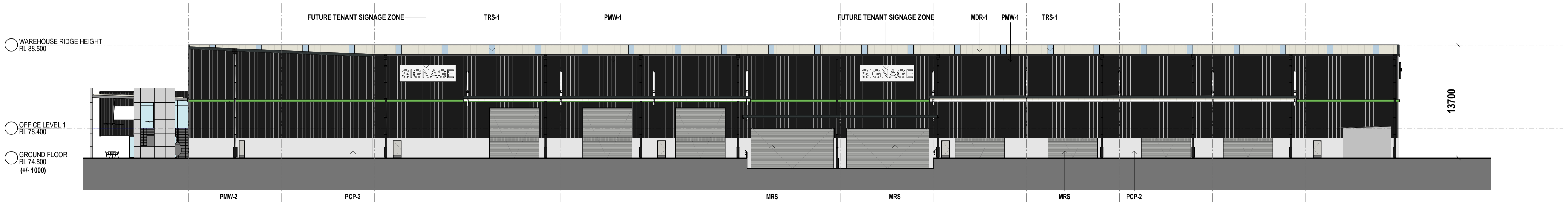
4 OFFICE 1C - ELEVATION WEST 1 : 100

INDICATIVE EXTERNAL FINISHES LEGEND

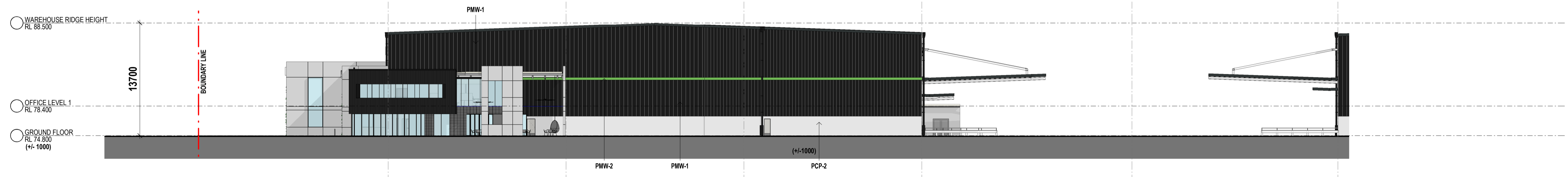
- BLK-1
STACKED BOND
BLOCKS GREY
- GL-1
CLEAR GLAZING - LIGHT
GREY TINT OR SIMILAR
- GL-2
PREFINISH FC SHEET
- MDR-1
METAL DECK ROOFING
COLORBOND - SURFMST
- MRS
METAL ROLLER
SHUTTER
- MESH-1
STAINLESS STEEL
MESH IN METAL
FRAME
- PCP-1
PRECAST CONCRETE PANEL
OFF FORM CONCRETE FINISH
- PCP-2
PRECAST CONCRETE PANEL
PAINT FINISH
- PMW-1
PREFINISHED METAL WALL SHEET
CLADDING COLORBOND -
MONUMENT FINISH (OR SIMILAR)
- PMW-2
PREFINISHED METAL WALL SHEET
CLADDING COLORBOND -
GOODMAN GREEN FINISH
- TRS-1
TRANSLUCENT ROOF SHEET
OPAL COLOUR
- TRS-2
TRANSLUCENT ROOF SHEET
OPAL COLOUR (OR SIMILAR)
- WH-1
STEEL WINDOW HOOD
COLORBOND MONUMENT FINISH (OR SIMILAR)



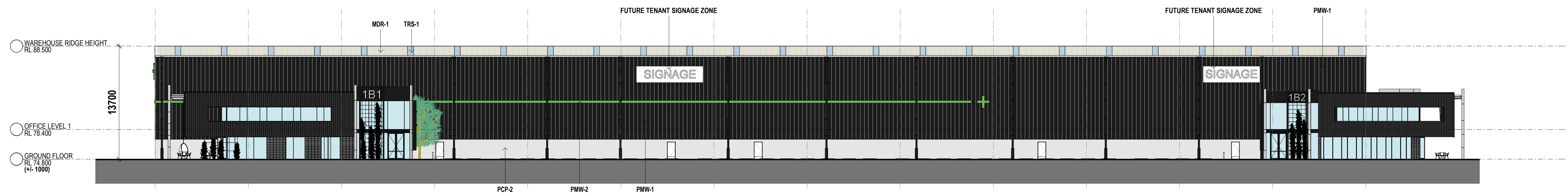
1 1B1 - NORTH ELEVATION 1 : 250



2 1B1 + 1B2 - EAST ELEVATION 1 : 250



3 1B2 - SOUTH ELEVATION 1 : 250



4 1B1 + 1B2 - WEST ELEVATION 1 : 250

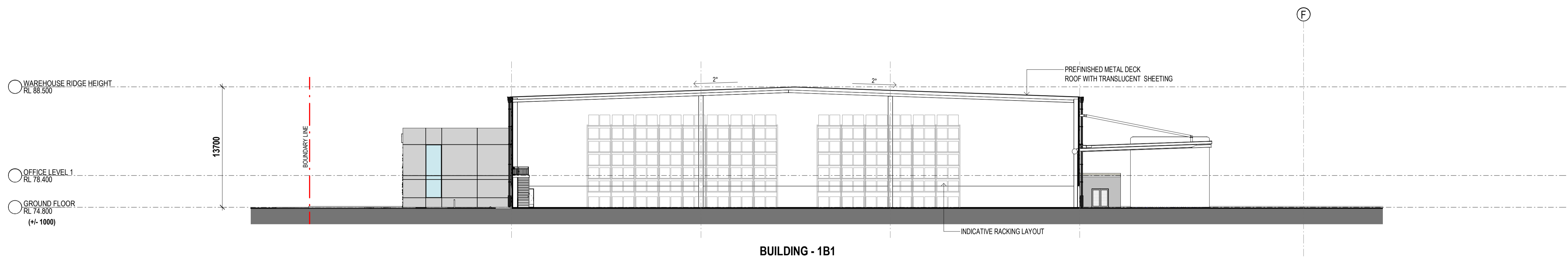
INDICATIVE EXTERNAL FINISHES LEGEND

- BLK-1
STACKED BOND
BLOCKS GREY
- GL-1
CLEAR GLAZING - LIGHT
GREY TINT OR SIMILAR
- GL-2
PREFINISH FC SHEET
- MDR-1
METAL DECK ROOFING
COLORBOND - SURFMIST
- MRS
METAL ROLLER
SHUTTER
- MESH-1
STAINLESS STEEL
MESH IN METAL
FRAME
- PCP-1
PRECAST CONCRETE PANEL
OFF FORM CONCRETE FINISH
- PCP-2
PRECAST CONCRETE PANEL
PAINT FINISH
- PMW-1
PREFINISHED METAL WALL SHEET
CLADDING COLORBOND -
MONUMENT FINISH (OR SIMILAR)
- PMW-2
PREFINISHED METAL WALL SHEET
CLADDING COLORBOND -
GOODMAN GREEN FINISH
- TRS-1
TRANSLUCENT ROOF SHEET
OPAL COLOUR
- TRS-2
TRANSLUCENT ROOF SHEET
OPAL COLOUR (OR SIMILAR)
- WH-1
STEEL WINDOW HOOD
COLORBOND MONUMENT FINISH (OR SIMILAR)

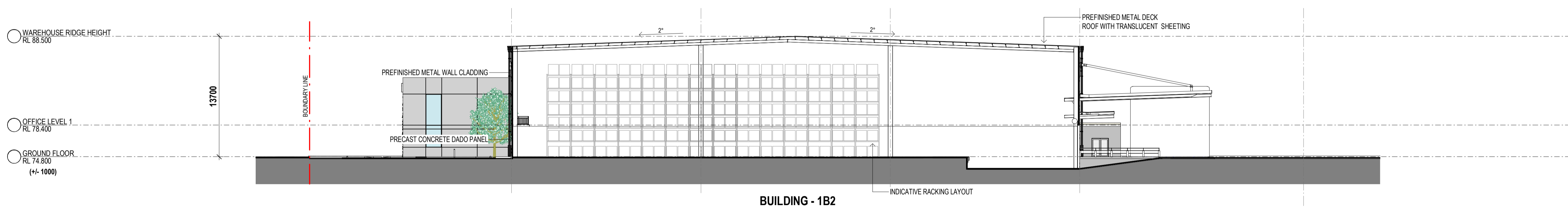


INDICATIVE EXTERNAL FINISHES LEGEND

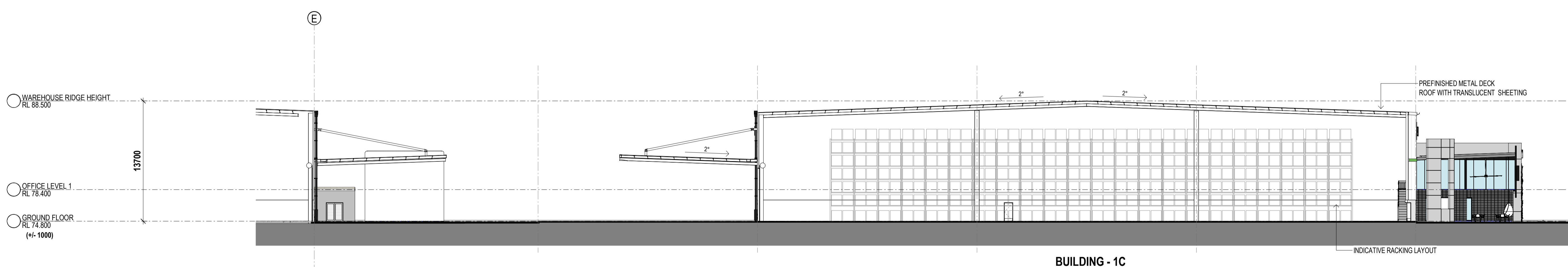
- BLK-1 STACKED BOND BLOCKS GREY
- GL-1 CLEAR GLAZING - LIGHT GREY TINT OR SIMILAR
- GL-2 PREFINISH FC SHEET
- MDR-1 METAL DECK ROOFING COLORBOND - SURFMIST
- MRS METAL ROLLER SHUTTER
- MESH-1 STAINLESS STEEL MESH IN METAL FRAME
- PCP-1 PRECAST CONCRETE PANEL OFF FORM CONCRETE FINISH
- PCP-2 PRECAST CONCRETE PANEL PAINT FINISH
- PMW-1 PREFINISHED METAL WALL SHEET CLADDING COLORBOND - MONUMENT FINISH (OR SIMILAR)
- PMW-2 PREFINISHED METAL WALL SHEET CLADDING COLORBOND - GOODMAN GREEN FINISH
- TRS-1 TRANSLUCENT ROOF SHEET OPAL COLOUR
- TRS-2 TRANSLUCENT ROOF SHEET OPAL COLOUR (OR SIMILAR)
- WH-1 STEEL WINDOW HOOD COLORBOND MONUMENT FINISH (OR SIMILAR)



1 SECTION A - BUILDING 1B1 1 : 250



2 SECTION B - BUILDING 1B2 1 : 250



3 SECTION C - BUILDING 1C 1 : 250