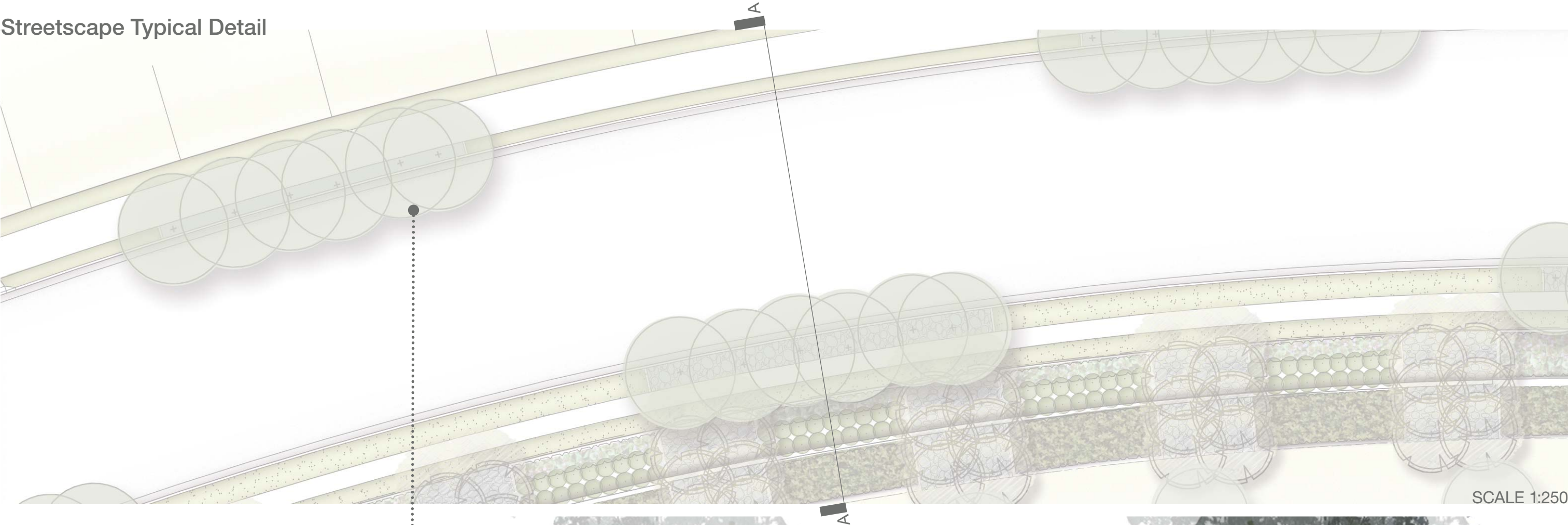


Streetscape Typical Detail

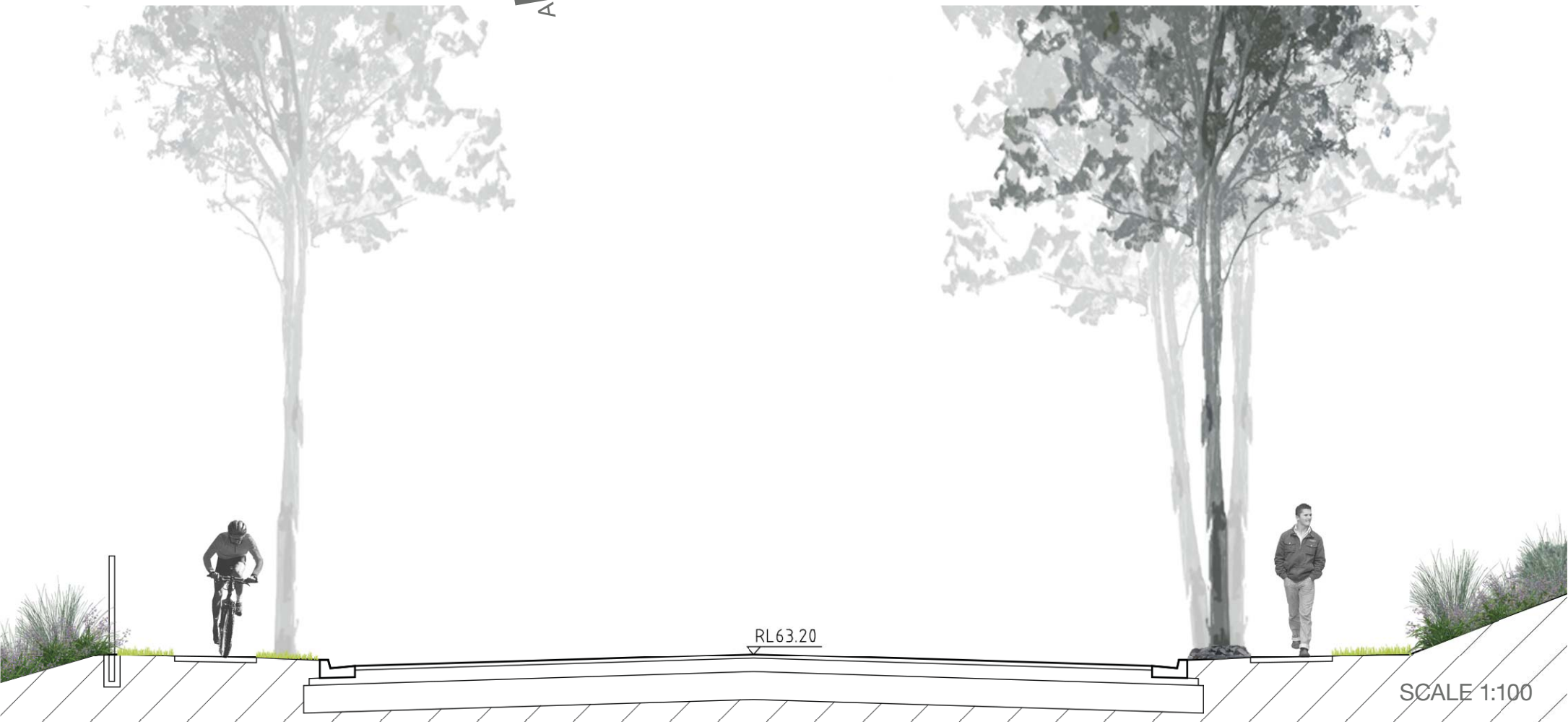


SCALE 1:250

Proposed trees flanking both side of all proposed streets. Grass verge shall separate 'copse' street tree planting, based in ballast, with organic mulch underlay.



Copses of roadside trees to be in ballast



SCALE 1:100

Typical Landscape Site Section

This section has been produced to graphically demonstrate the interfaces and relationship of intended landscape treatments across the subject site.



Bio-retention basin

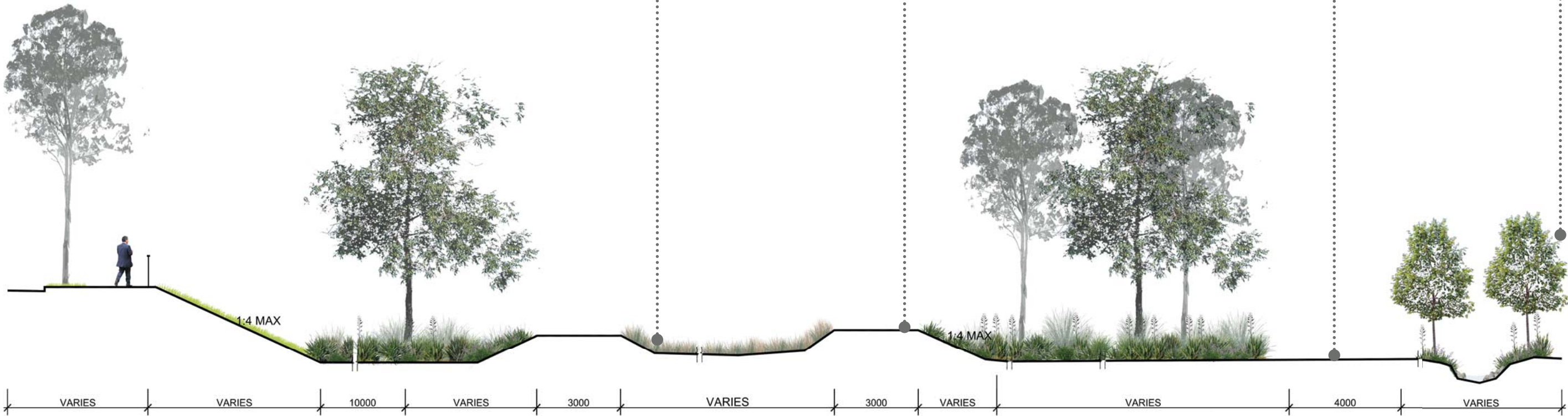


Spray seal maintenance road

4m Maintenance track, 3m for basin and biodiversity



Biodiversity zone



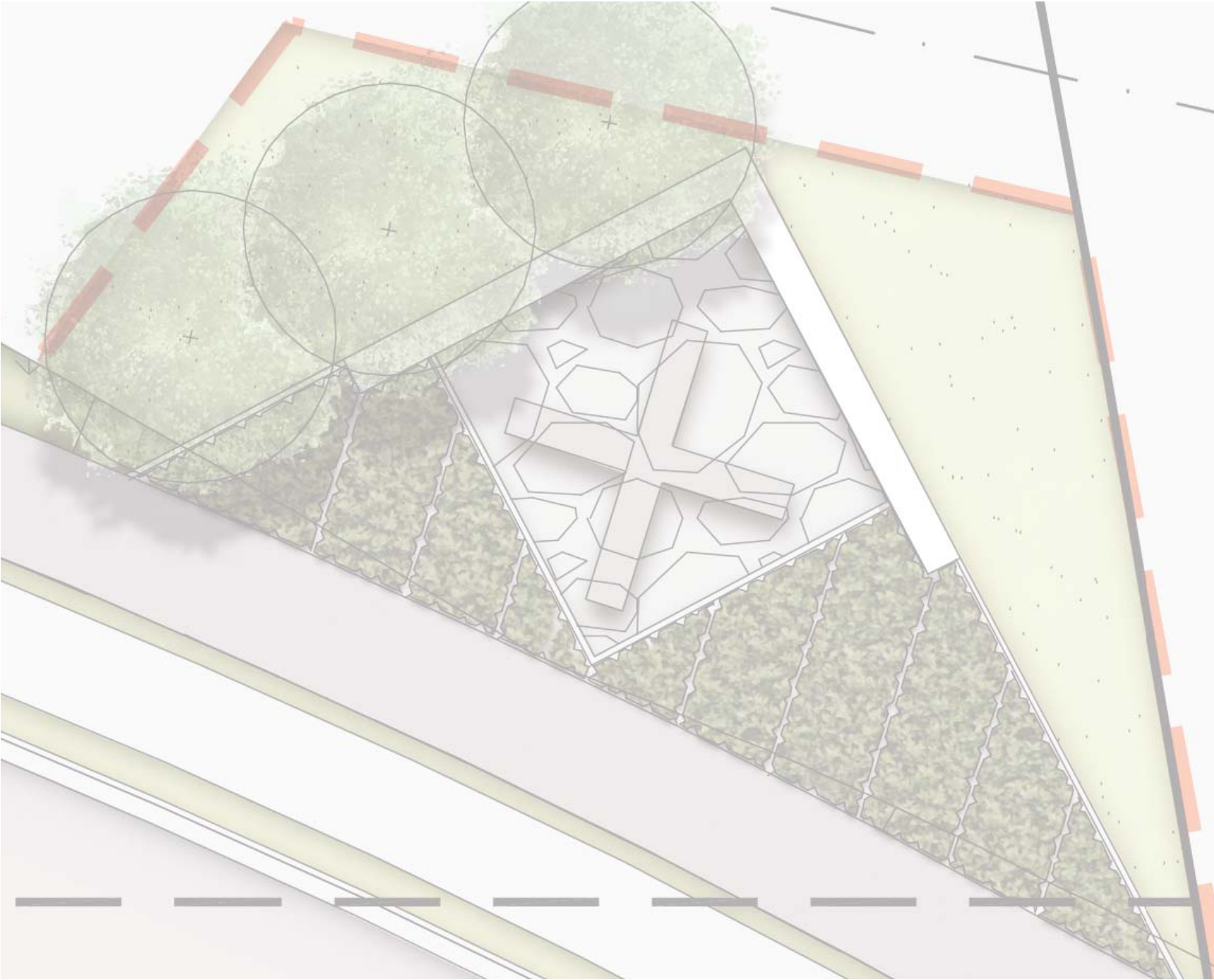
SCALE 1:150

Signage Landscape Treatment



OWE shall consist of a hierarchy of signage and wayfinding. All landscape design shall be coordinated to ensure a strong coordinated approach.

Larger entry signs will be further enhances by feature tree, shrub and groundcover planting. Hardscape elements such as ballast and wall may also be included to ‘ground’ signage and create a visual platform.



SCALE 1:75



Standard Goodman signage



Lush plantings



Feature ballast rock as apron



Signage set within landscape



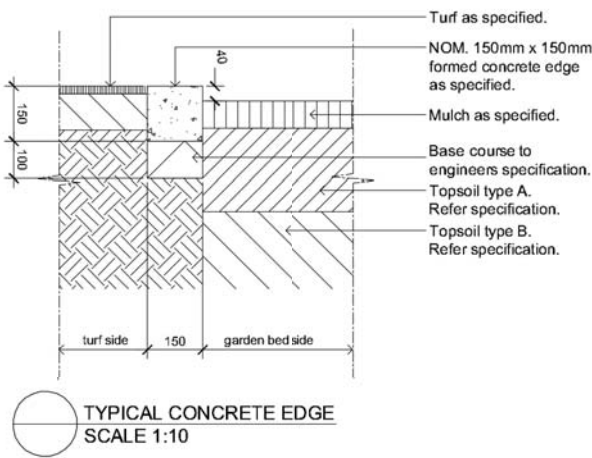
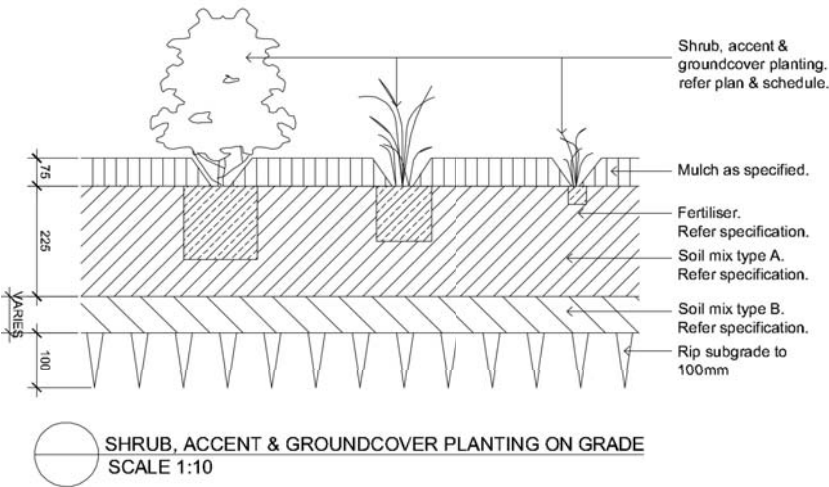
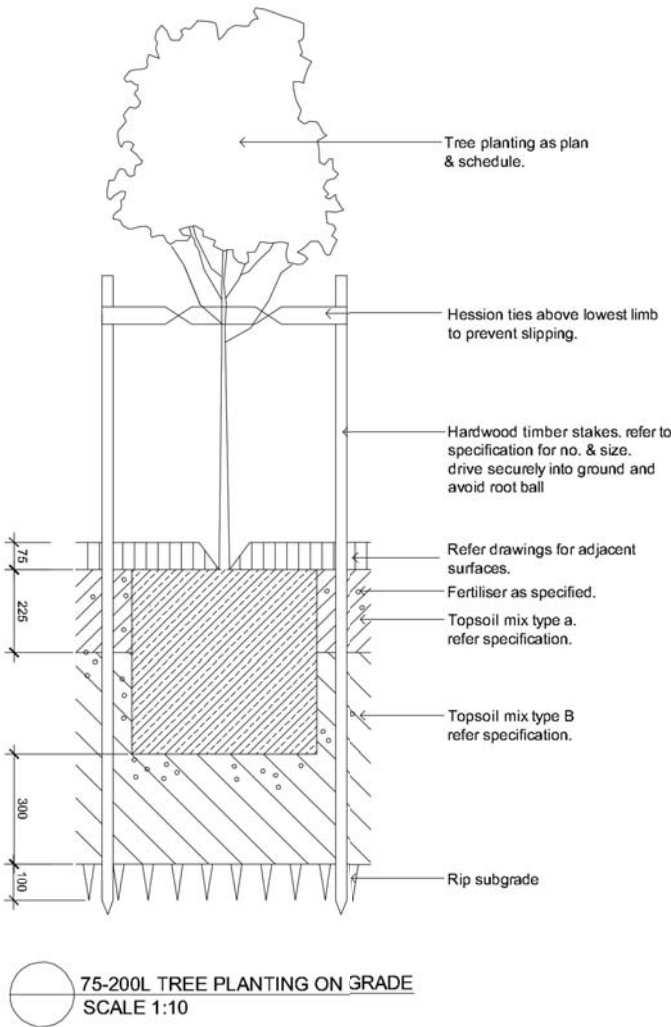
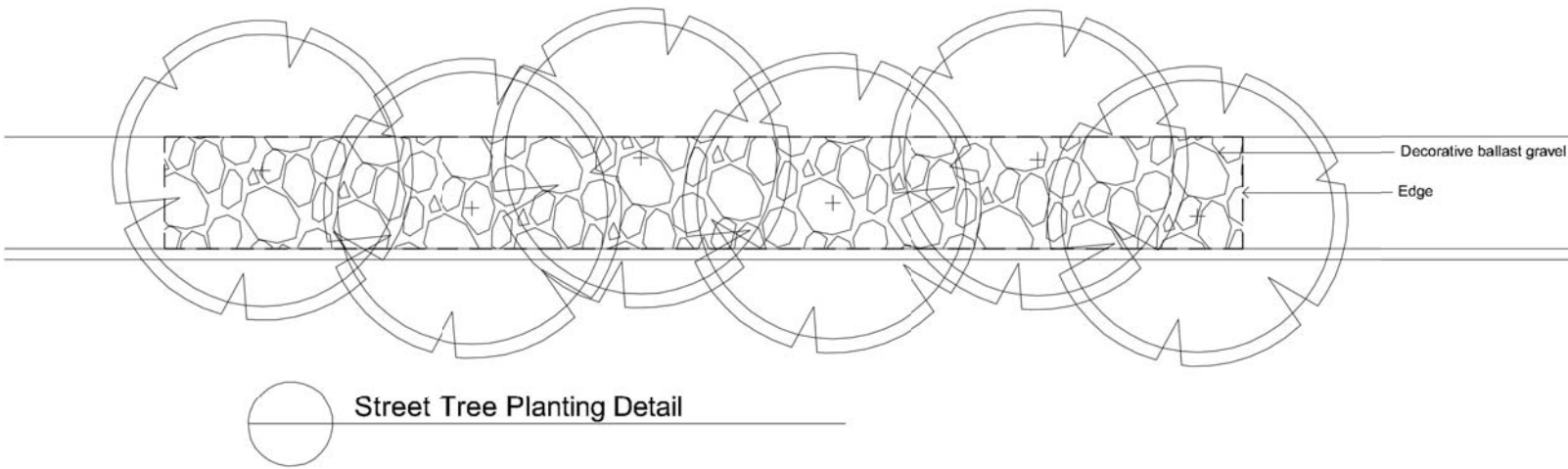
Landscape banding



Feature native deciduous trees as backdrop

Estate Landscape Works

Typical Landscape Details & Plant Schedule

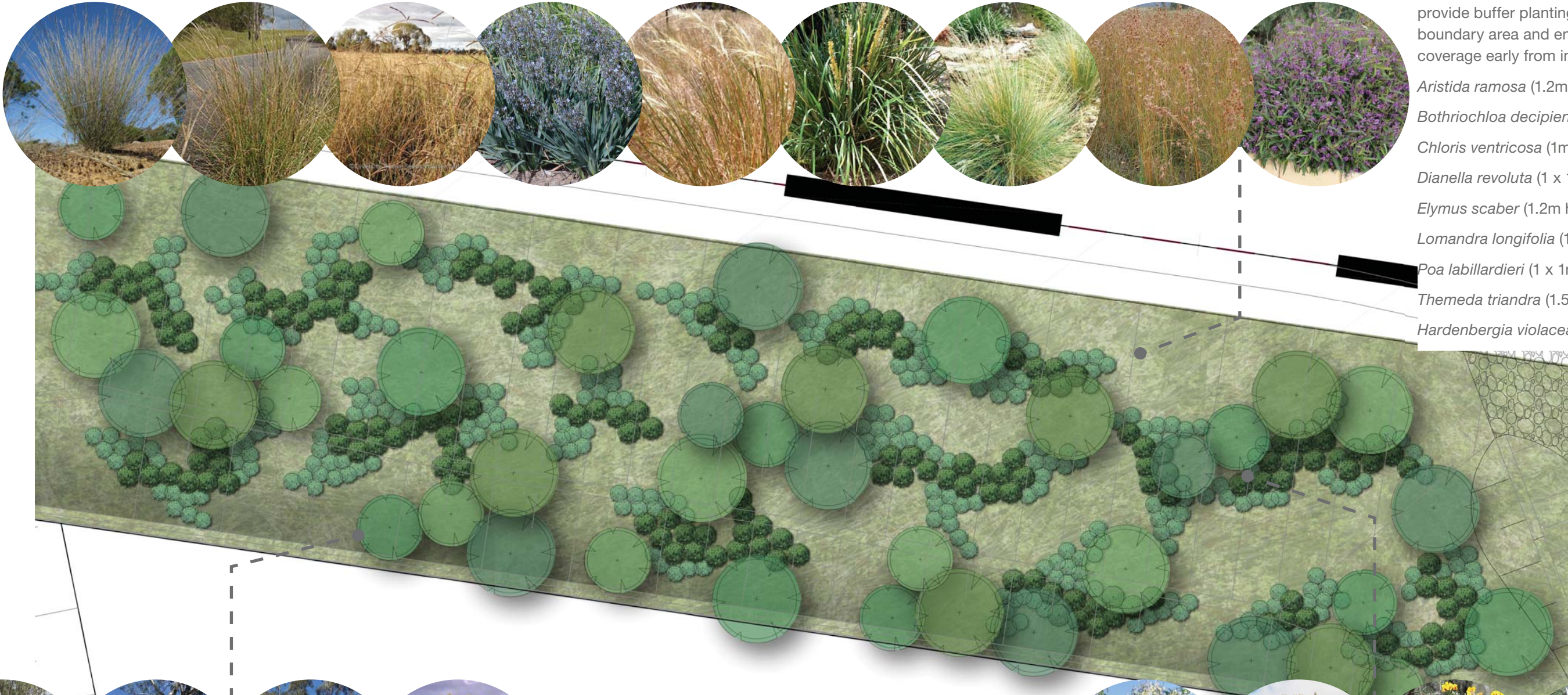


Botanical Name	Common Name	Mature Height (m.)	Mature Spread (m.)	Spacings	Pot Size	CPW
Trees						
<i>Angophora subvelutina</i>	Broad-leaved Apple	25	15	As Shown	75L	+
<i>Brachychiton acerifolius</i>	Illawarra Flame Tree	10	8	As Shown	200L	
<i>Cupaniopsis anacardioides</i>	Tuckeroo	8	8	As Shown	200L	
<i>Corymbia maculata</i>	Spotted Gum	15	7	As Shown	75L	+
<i>Eucalyptus crebra</i>	Narrow Leaved Ironbark	15	6	As Shown	75L	*
<i>Eucalyptus moluccana</i>	Grey Box	20	8	As Shown	75L	*
<i>Eucalyptus tereticornis</i>	Forest Red Gum	30	8	As Shown	75L	*
Shrubs						
<i>Acmena smithii</i> var. <i>minor</i>	Dwarf Lillypilly	3	2	As Shown	300mm	
<i>Callistemon 'Endeavour'</i>	Bottlebrush	2.5	2.5	As Shown	300mm	
<i>Callistemon viminalis</i> 'Little John'	Little John Bottlebrush	0.8	0.8	As Shown	300mm	
<i>Westringia fruticosa</i>	Coastal Rosemary	1	1	700mm	300mm	
Groundcovers and Grasses						
<i>Gazania tomentosa</i>	Yellow Gazania	0.2	0.5	5/sqm	150mm	
<i>Myoporum parvifolium</i>	Creeping Boobialla	0.2	1.5		150mm	
<i>Pennistemon 'Nafray'</i>	Nafray Pennisetum	0.6	0.6		150mm	
<i>Trachelospermum jasminoides</i>	Star Jasmine	0.2	0.5		150mm	

Plant quantities and arrangement subject to design development



Typical Detail Plan (Western Boundary)



Grasses and climbers:

A mix of native grasses shall quickly provide buffer planting across the boundary area and ensure green coverage early from inception.

- Aristida ramosa* (1.2m high)
- Bothriochloa decipiens* (1m high)
- Chloris ventricosa* (1m high)
- Dianella revoluta* (1 x 1.5m)
- Elymus scaber* (1.2m high)
- Lomandra longifolia* (1.5 x 1.3m)
- Poa labillardieri* (1 x 1m)
- Themeda triandra* (1.5 x 0.5m)
- Hardenbergia violacea* (2-3m x Climbing)



Trees: Varying species of native trees shall be used create an effective mixed height canopy screen along the boundary.

- Eucalyptus crebra* (35 x 6m)
- Eucalyptus moluccana* (25 x 8m)
- Eucalyptus tereticornis* (50 x 8m)
- Angophora floribunda* (30 x 6m)

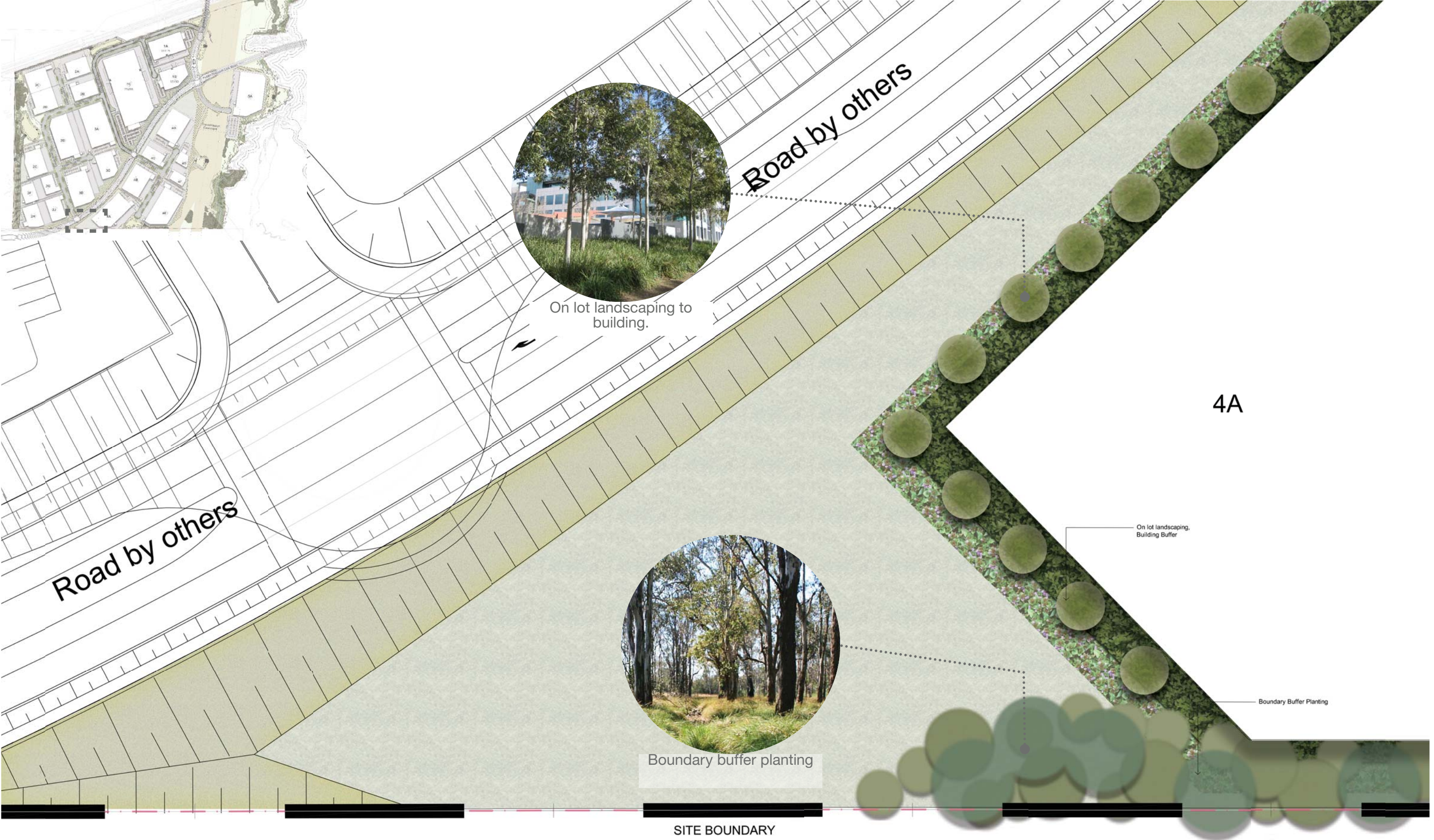


Shrubs: A range of native shrub species with varying heights is used to create a mid tier buffer screen below the larger tree species.

- Acacia falcata* (2-5m high)
- Bursaria spinosa* (5-10m high)
- Dillwynia sieberi* (0.5 - 2.5m high)
- Indigophora australis* (2.5 x 2m)

1:400

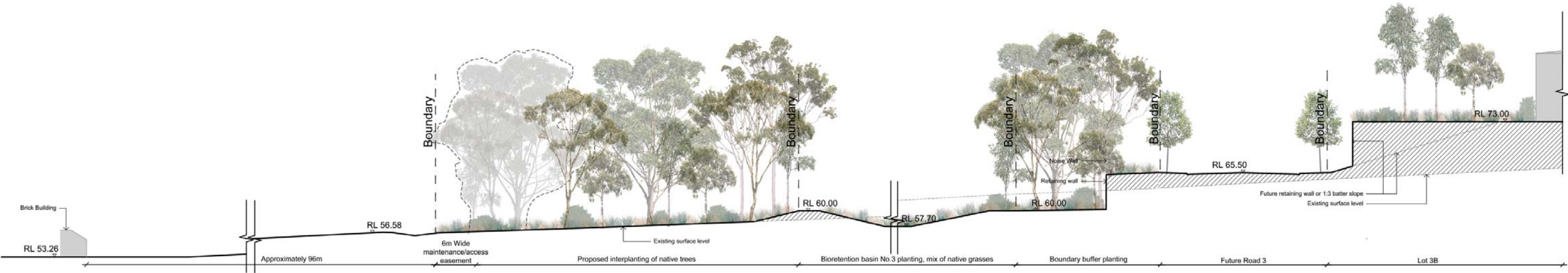
Key Plan (Detail Plan)



Boundary Treatment

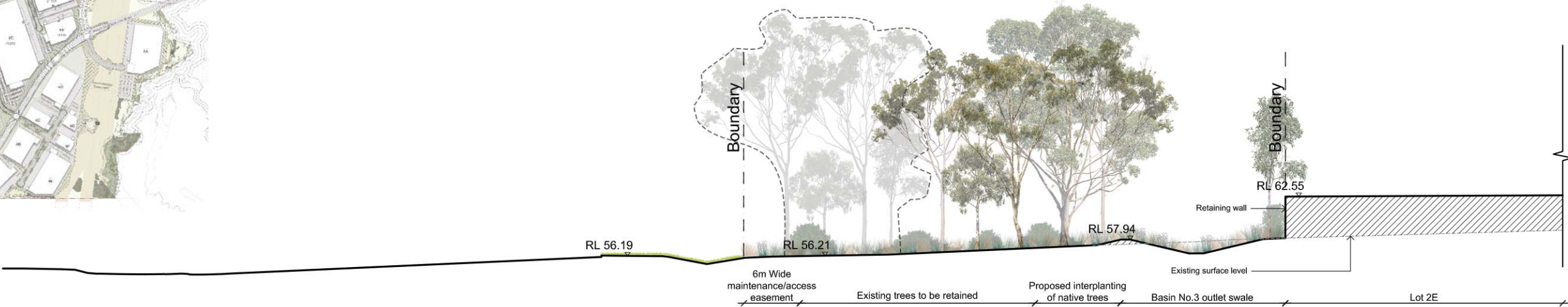


Section AA (Western Boundary)
1:500 (Adapted from Civil section 1)

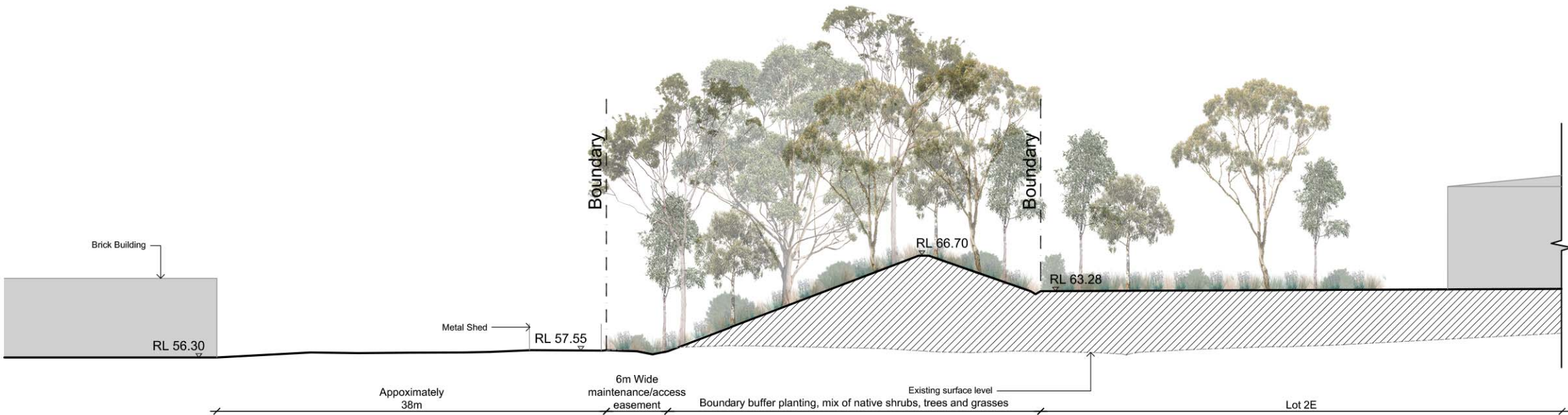


Section BB (Western Boundary)
Note to Scale (Adapted from Civil section 2)

Boundary Treatment



Section CC (Western Boundary)
1:500 (Adapted from Civil section 3)



Section DD (Western Boundary)
1:500 (Adapted from Civil section 4)