

Tuesday, 5th June 2018

Mr Matthew Rawlinson

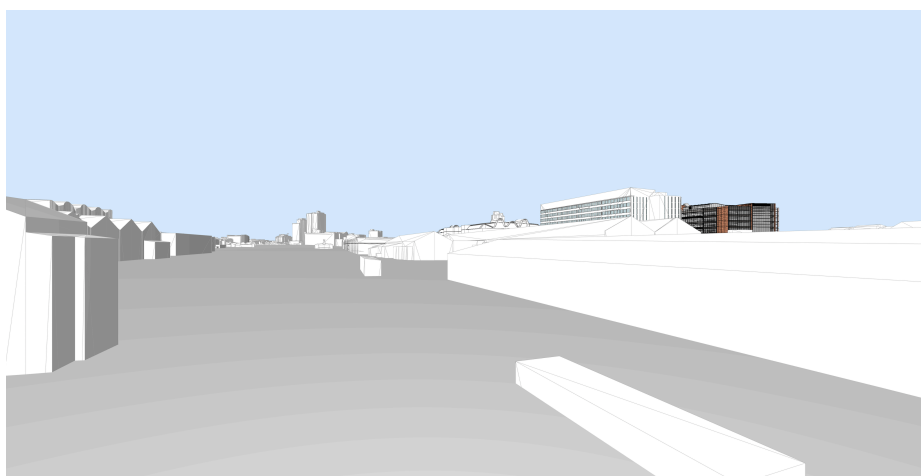
Mirvac Development
ATP, Bay 8, Eveleigh
Sydney NSW 2015

To whom it may concern,

ATP, Building 1 - Proposed Plant level Load Bank S96

The load bank has been positioned to the western end of the northern plant level floor plate to allow it to be recessed below higher level plant roofs while maximising setback from the office facades below to minimise visual impact. The north western location also minimises views from primary residential areas to the south and west of the development and the main entry to the development to the east. As such the load bank is not considered to effect the design quality of building 1.

Please refer below for visualisation images reflecting the lack of impact of the proposed Load Bank on the design quality of ATP Building 1.



Directors

Richard Francis-Jones
Jeff Morehen

Principals

Elizabeth Carpenter
Geoff Croker
David Haseler
Christine Kwong
Johnathan Redman
Sean McPeake
Adrian Yap
Simon Barr
Annie Hensley

Associate Principal

John Perry

Senior Associates

Lina Sjögren
James Perry
Phoebe Pape

Associates

Christopher Bridge
Andrew Chung
Phillip Pham
Daniel Bourke
Peter Dawson
Soenke Dethlefsen
Louise Goodman
William Pritchard
Paul Brace
Michelle Ho
Alison Jones
David Moody
Katherine Tracey

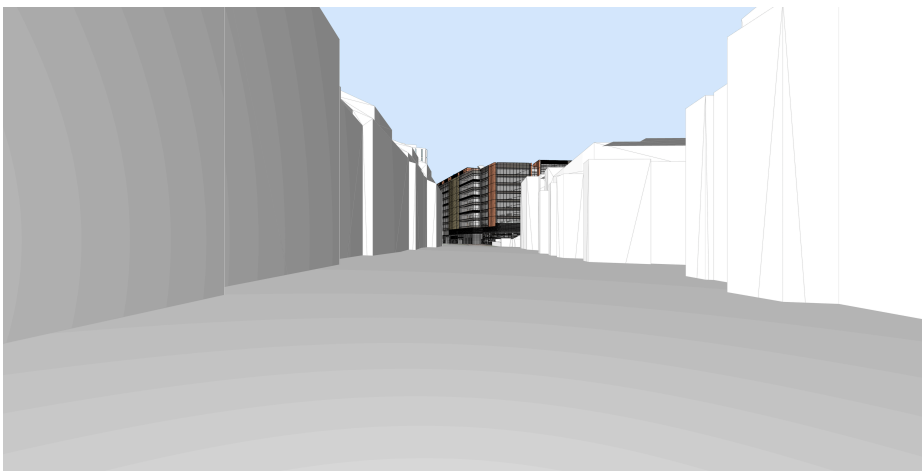


fjmt

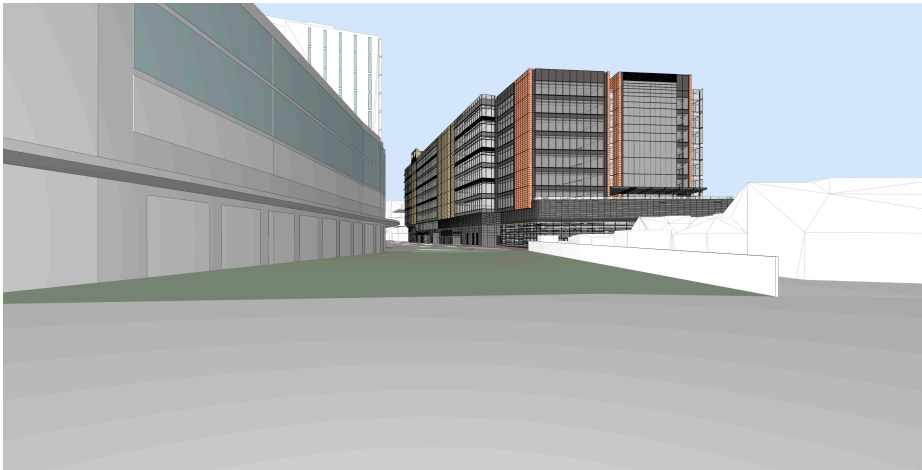
architecture
interiors
urban
landscape

Long View from North West

View from North West



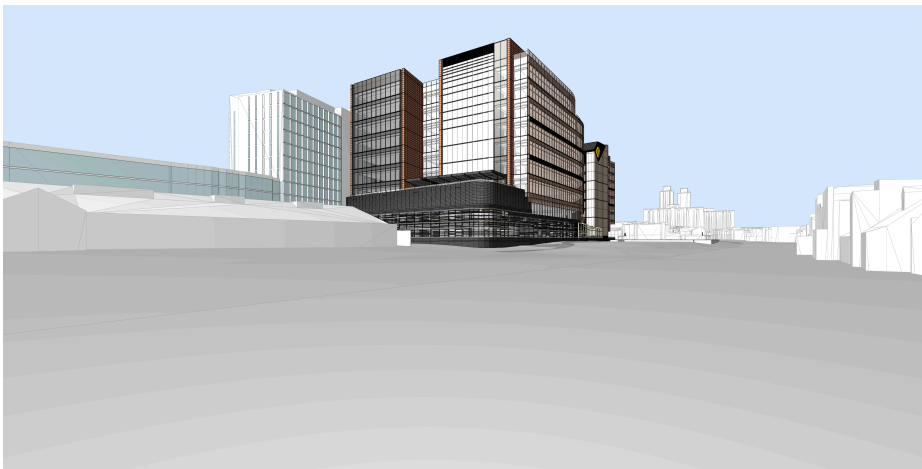
Long View from West



fjmt

architecture
interiors
urban
landscape

View from West



View from South West



architecture
interiors
urban
landscape



View from North East

Yours Sincerely

A handwritten signature in blue ink, reading 'Peter Dawson'.

Peter Dawson
Associate

cc	Sean McPeake	fjmt
	William Walker	Mirvac