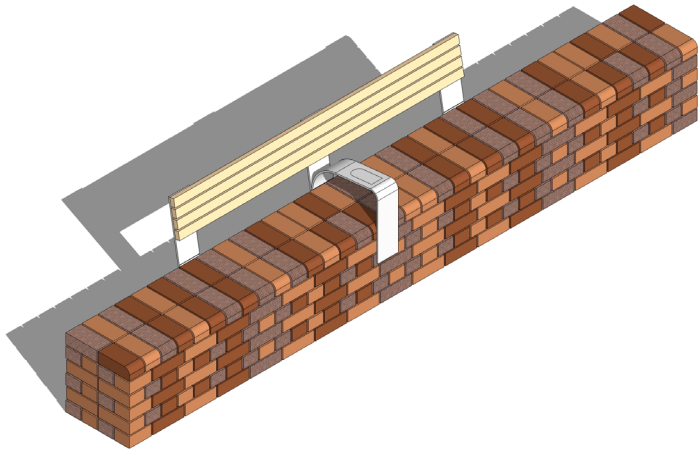
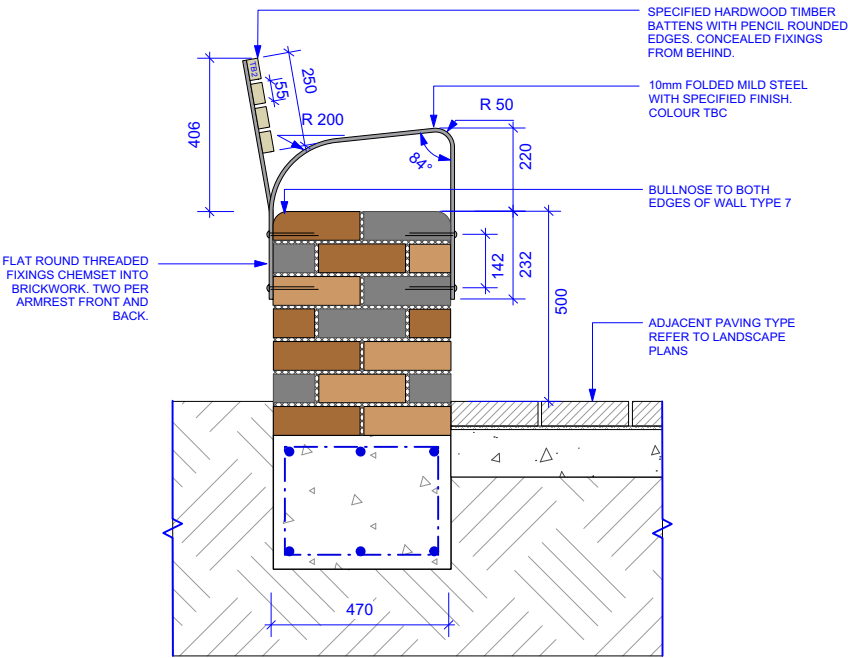


# WELLNESS PRECINCT

Furniture Details



BENCH DETAIL - EVELEIGH GREEN|NTS



BENCH DETAIL - BENCH WITH BACKREST AND ARMREST|1:20 @ A3

# WELLNESS PRECINCT

## Planting Plan



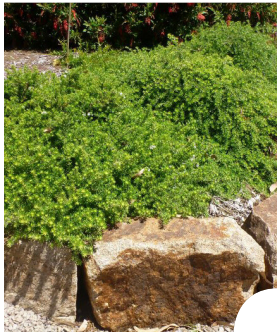
Eucalyptus leucoxylon



Magnolia x soulangeana



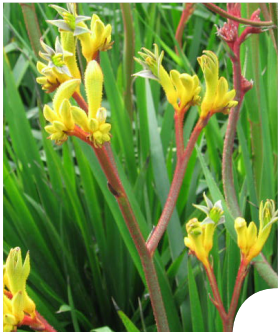
Brachyscome multifida



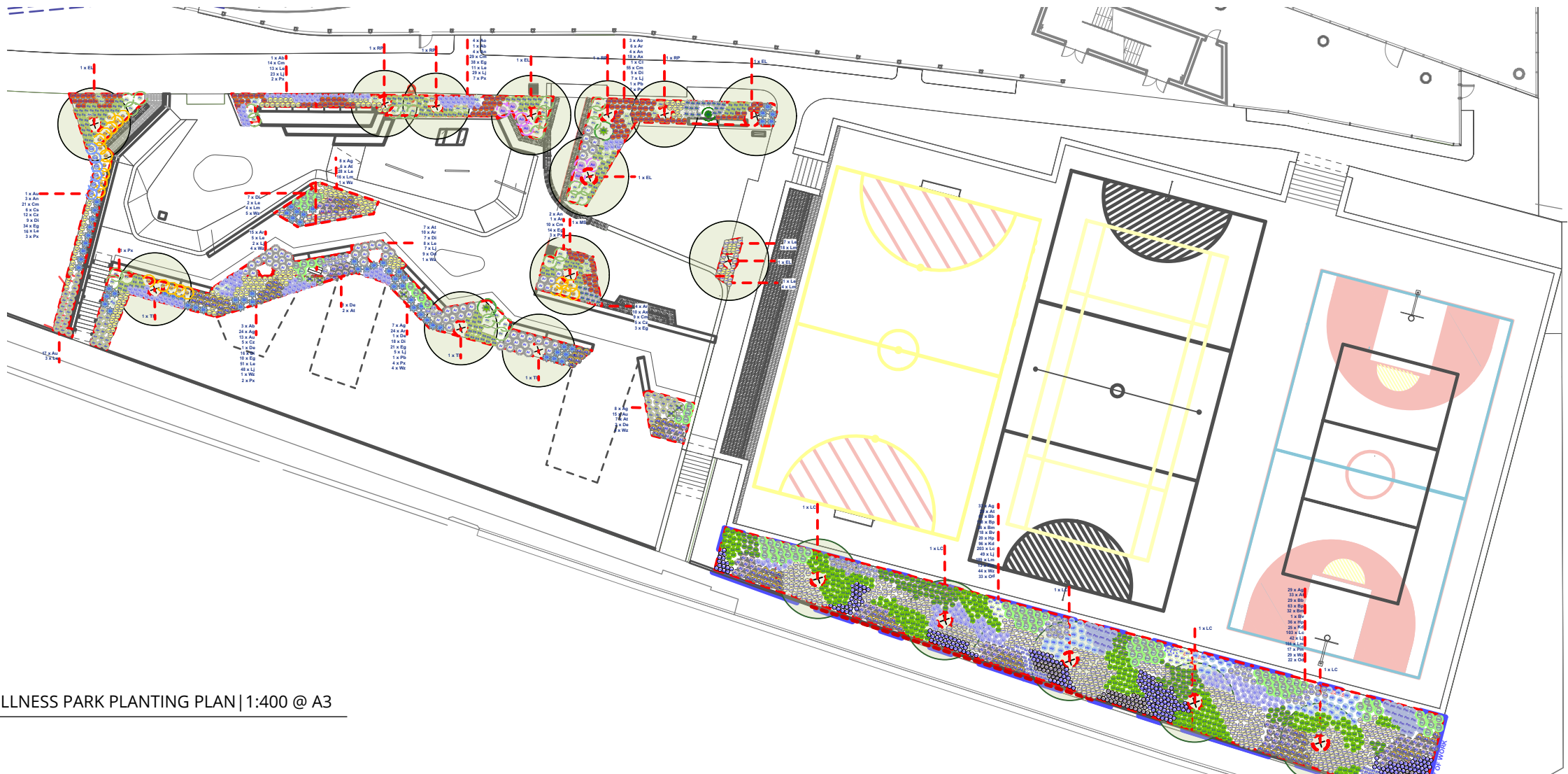
Westringia fruticosa 'Zena'



Asplenium nidus



Anigozanthos 'Gold Velvet'



WELLNESS PARK PLANTING PLAN | 1:400 @ A3

### PLANT SCHEDULE

WELLNESS PRECINCT		
TREES		
EL	<i>Eucalyptus leucoxylon</i>	Yellow Gum
LC	<i>Lophostemon confertus</i>	Brush Box
RP	<i>Robinia pseudoacacia</i> 'Frisia'	Golden Robinia
TI	<i>Tristanopsis laurina</i>	Water Gum
MS	<i>Magnolia x soulangeana</i>	Magnolia
SHRUBS		
At	<i>Anigozanthos</i> 'Regal Velvet'	Kangaroo paws 'regal Velvet'
Ag	<i>Anigozanthos</i> 'Gold Velvet'	Kangaroo paws 'Gold Velvet'
Ab	<i>Alcantarea imperialis</i>	Bromeliad
Ao	<i>Acanthus mollis</i>	Oyster Plant
Ax	<i>Anemone x hybrida</i> 'Pink'	Anemone
An	<i>Asplenium nidus</i>	Bird's Nest Fern
Cl	<i>Colocasia esculenta</i> 'Heart of the Jungle'	Elephant Ear
De	<i>Doryanthes Excelsa</i>	Gymea Lily
Cs	<i>Ctenanthe setosa</i> 'Grey Star'	Ctenanthe 'Grey Star'
Hp	<i>Helichrysum petiolare</i>	Licorice-Plant
Od	<i>Ozothamnus diosmifolius</i>	Rice Flower
Px	<i>Philodendron Xanadu</i>	Philodendron Xanadu
Pb	<i>Philodendron bipinnatifidum</i>	Philodendron Selloum
Pm	<i>Philotheca myoporoides</i> 'Profusion	Wax Flower
Wz	<i>Westringia fruticosa</i> 'Zena'	Coastal Rosemary

GRASSES AND CLUMPING PLANTS		
Ar	<i>Arthropodium cirratum</i>	New Zealand Rock Lily
Au	<i>Agapanthus africanus</i>	Lily of the Nile
Bb	<i>Brachyscome multifida</i> 'Magenta Bliss'	Magenta Bliss Daisy
Bm	<i>Brachyscome multifida</i> 'White Delight'	White Delight Daisy
Bp	<i>Brachyscome multifida</i>	Native Daisy
Bv	<i>Baeckea virgata</i> 'Compacta'	Twiggy Heath Mytle
Cm	<i>Clivia miniata</i>	Kaffir Lilly
Cz	<i>Calathea zebrina</i>	Zebra Plant
Di	<i>Dianella</i> 'Casa Blue'	Flax Lily
Eg	<i>Aspidistra elatior</i>	Cast Iron Plant
Kd	<i>Lomandra longifolia</i> 'Katrinus'	Lomandra Katrinus
Lc	<i>Lomandra confertifolia</i> 'Verdey'	Lomandra Verdey
Le	<i>Liriope muscari</i> 'Evergreen Giant'	Evergreen Giant
Lm	<i>Liriope muscari</i> 'Evergreen Giant'	Evergreen Giant
Lj	<i>Dianella caerulea</i> 'Little Jess'	Dianella Little Jess

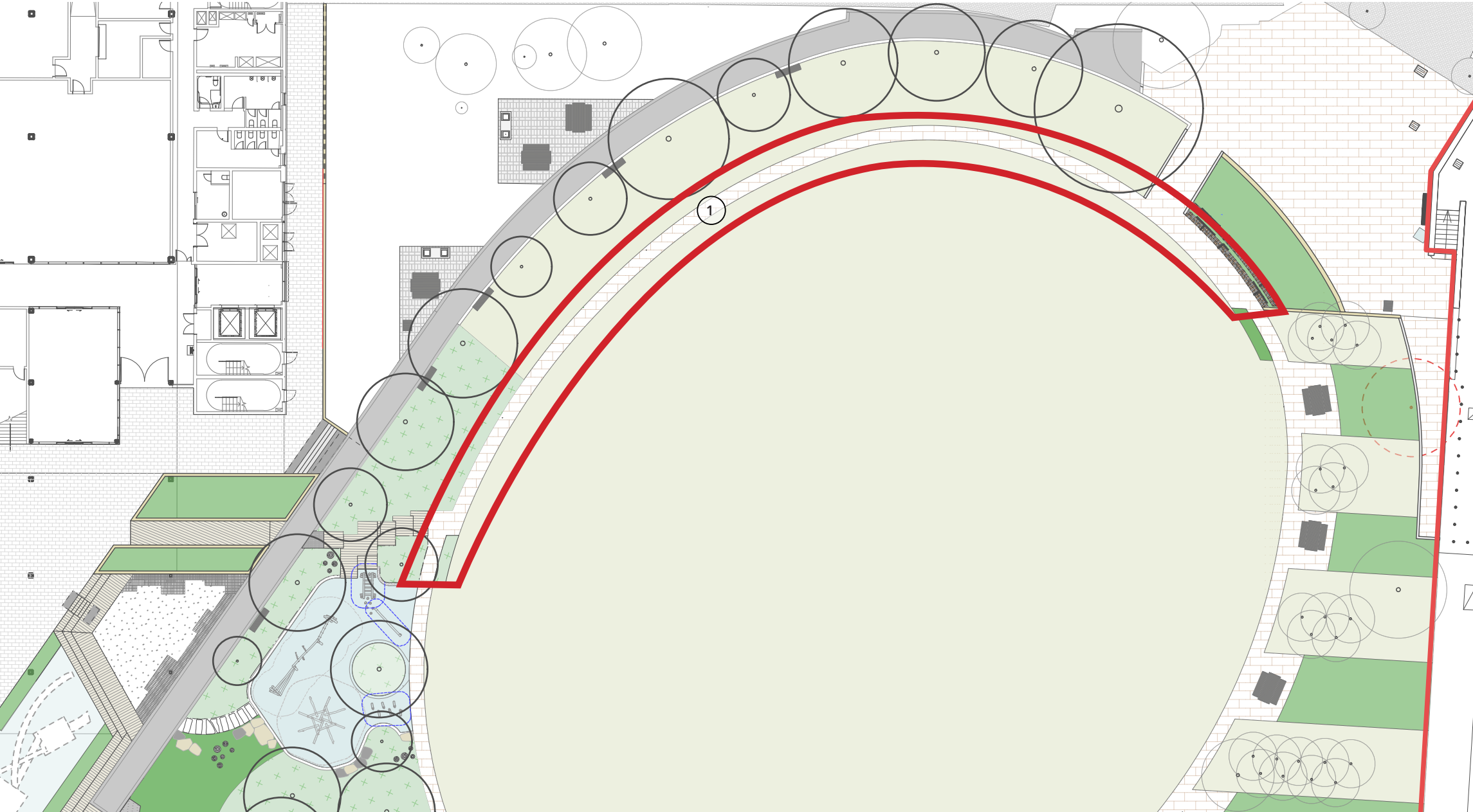
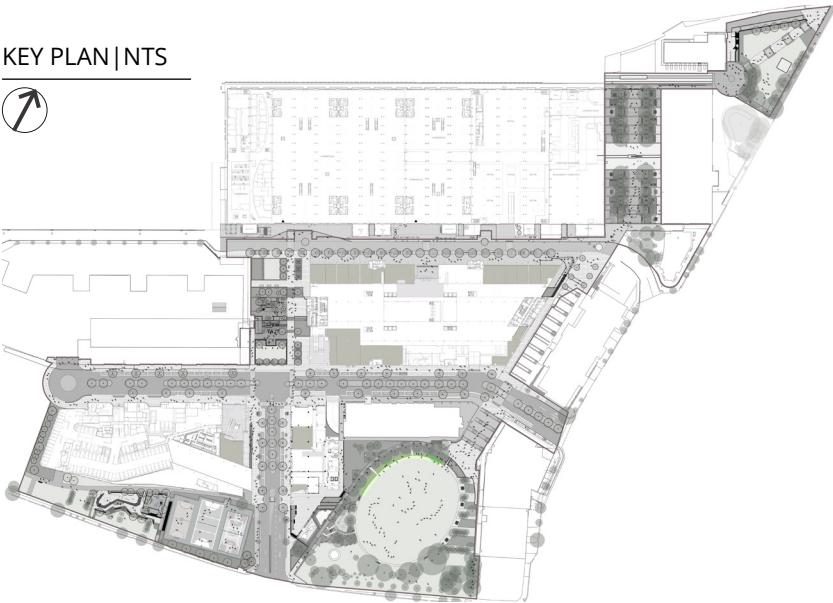




# EVELEIGH GREEN

## Landscape Plan

The proposed brick path that provides a continuous loop around the oval has been slightly modified. The northern portion of the path has been relocated approximately 1.2 metres inboard to avoid impacting on existing tree roots of the existing Ficus microcarpa trees. The location of the path has been coordinated and approved by the project arborist.



- Key**
- Eveleigh Green Pathway**
1. Realigned brick pathway

EVELEIGH GREEN LANDSCAPE PLAN | 1:400 @ A3

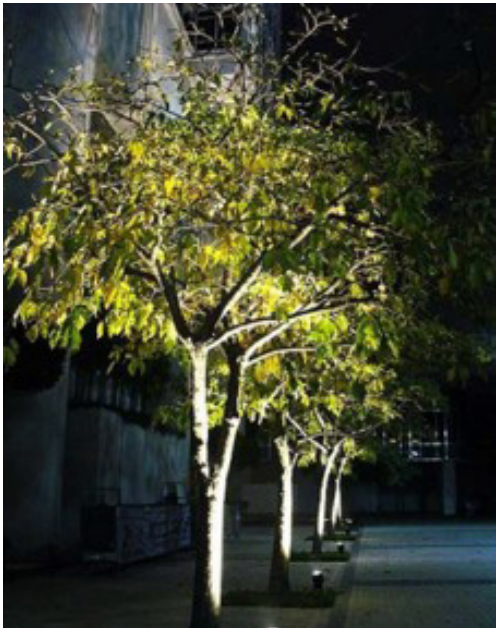
# LANDSCAPE FEATURE LIGHTING

The landscape feature lighting assists in establishing the visual identify of the ATP Public Domain. The feature lighting seeks to enhance the landscaping design by responding to the following 4 key principles:

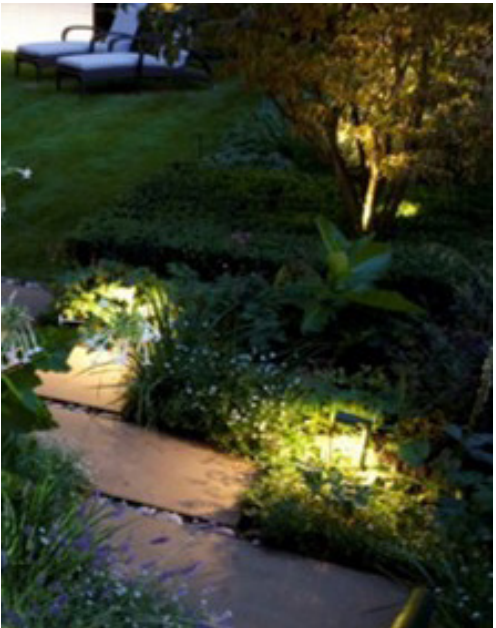
- 1. Highlight forms and finishes to enhance the environment
- 2. Provide layering of accent and ambient lighting for visual interest
- 3. Assist with wayfinding and navigation through transitional zones
- 4. Provides discreet integration to minimise visibility of fixtures and visual distraction

Key lighting concepts will include uplighting to trees, accent lighting to greenery and planting, handrail lighting to increase wayfinding and accent level changes and integrated lighting into seating and landscape walls

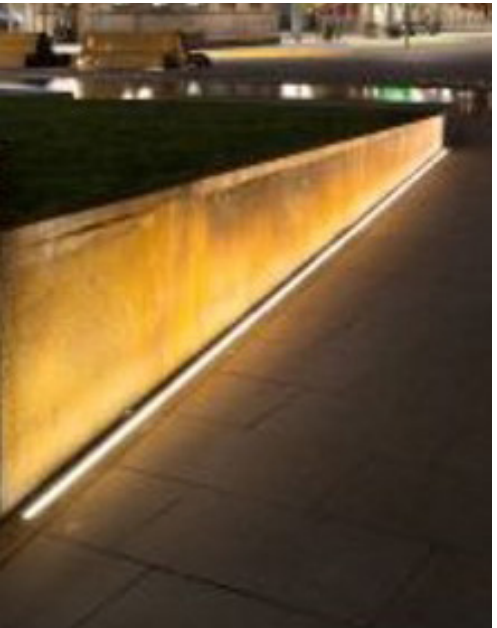
The landscape feature lighting will be designed by Point of View, who are also responsible for the feature lighting for the Locomotive Workshops. Lighting opportunities for the Heritage Objects within the Public Domain will also be developed in close consultation with the Heritage Consultant, Curio Projects and Interpretation Designer Trigger and approved as part of the Stage 2 Heritage Interpretation Plan (SSD 7317 Consent Condition F3).



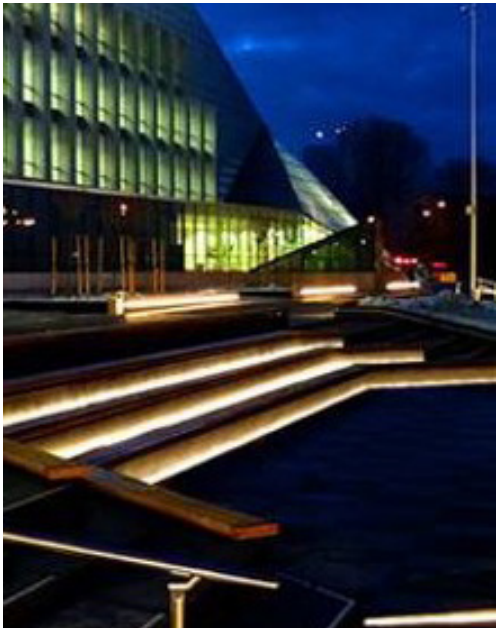
Uplighting to trees



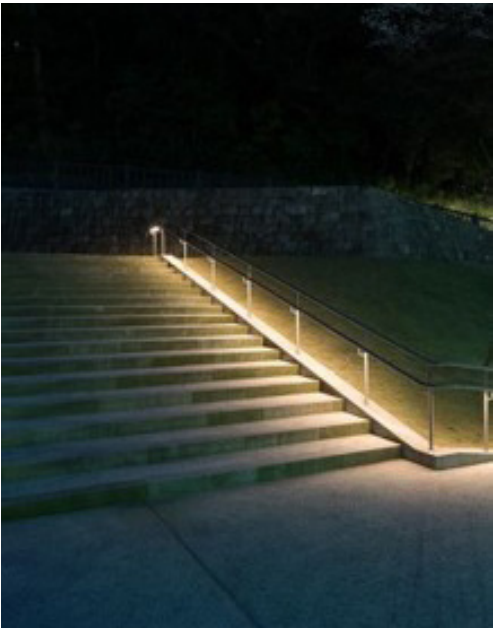
Lighting to planters and greenery



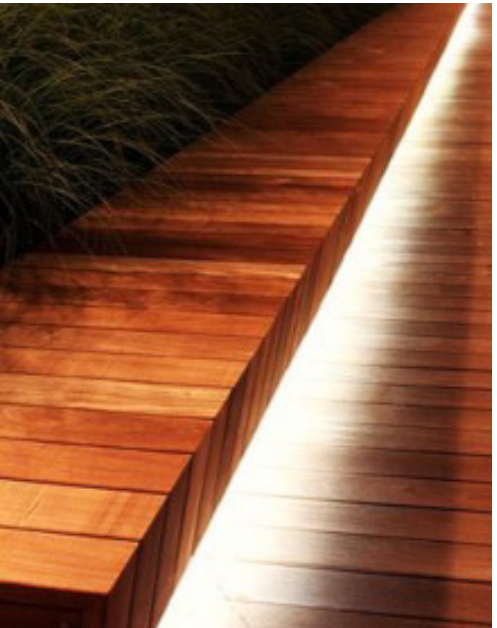
Uplighting to feature walls



Integrated lighting to seating



Accent lighting to level changes with integrated lighting to steps or handrails



Integrated lighting to timber deck/stage areas