

# Modification of Development Consent

## Section 4.55(1A) of the *Environmental Planning and Assessment Act 1979*

As delegate for the Minister for Planning, under delegation executed on 11 October 2017, I approve the modification of the development consent referred to in Schedule 1, subject to the conditions outlined in Schedule 2.



Chris Ritchie  
Director  
Industry Assessments

Sydney **4 APRIL**

2019

File: EF18/45114

### SCHEDULE 1

Application No:	SSD 7267
Applicant:	SUEZ RECYCLING & RECOVERY PTY LTD
Consent Authority:	Minister for Planning
Development:	Alterations and additions to and an increase in the processing capacity of an existing waste transfer station to 230,000 tonnes per annum (tpa) of waste including 140,000 tpa of general solid waste (putrescible) and 90,000 tpa of general solid waste (non-putrescible)
Date of Original Consent:	11 September 2017
Modification:	SSD 7267 MOD 2 – staged construction and increase in the processing capacity of general solid waste (putrescible) and amendment to site layout.

### SCHEDULE 2

This consent is modified as follows:

#### IN DEFINITIONS:

- Delete the definition for expanded operations and Secretary and insert the following definitions in alphabetical order:

Modification Assessments	The document assessing the environmental impact of a proposed modification of this consent submitted and other information submitted with the following modification applications made under the EP&A Act:
Planning Secretary	Secretary of the Department of Planning and Environment, or nominee
SSD 7267 MOD 1	Supporting documentation titled 'Wetherill Park Transfer Station Capacity Increase – Modification to Condition B6' prepared by SUEZ Recycling & Recovery Pty Ltd and dated 5 December 2017

SSD 7267 MOD 2	Supporting documentation titled 'SSD 15-7267 Wetherill Park Transfer Station Capacity Increase – Proposed Modification' prepared by SUEZ Recycling & Recovery Pty Ltd and dated 31 October 2018 and Response to Submissions report titled 'SSD 7267 Mod 2 – Response to Submissions' prepared by SUEZ Recycling & Recovery Pty Ltd and dated 7 December 2018 and updated drawings titled 'Revised Site Plan and Staging Plan Sheet No. CC01 to CC06' dated 28.08.18 prepared by Envision Group
Stage 1 construction	The carrying out of works within the area shown as Stage 1 on the plans at Appendix A of this consent, for the purpose of the development, including bulk earthworks and other infrastructure
Stage 1 operations	The point at which the site can receive more than 10,000 tonnes per year and up to 70,000 tonnes per year of general solid waste (putrescible)
Stage 2 construction	The carrying out of works within the area shown as Stage 2 on the plans at Appendix A of this consent, for the purpose of the development, including bulk earthworks and other infrastructure
Stage 2 operations	The point at which the site can receive more than 70,000 tonnes per year and up to 140,000 tonnes per year of general solid waste (putrescible)

#### **IN SCHEDULE 2; PART A: ADMINISTRATIVE CONDITIONS**

2. Delete Condition A2 and replace with the following:
  - A2. The Applicant, in acting on this consent, must carry out the Development in accordance with the:
    - (a) State significant development application SSD 7267;
    - (b) EIS and RTS;
    - (c) conditions in Schedule 2;
    - (d) SSD 7267 MOD 1;
    - (e) SSD 7267 MOD 2;
    - (f) development layout plans and drawings listed in Appendix A; and
    - (g) the Management and Mitigation Measures as identified in Appendix B.
3. Delete Condition A8 and replace with the following:
  - A8. The Applicant must not store on site more than 575 m<sup>3</sup> or 402.5 tonnes of general solid waste (putrescible) at any given time without prior approval from the Planning Secretary in consultation with the EPA.
4. In Condition A20 insert the following words 'Stage 1 construction and Stage 2' after the words 'Prior to the commencement of'.
5. In Condition A21 delete the word 'expanded' and replace with the words 'Stage 1'.
6. Delete the heading 'Requirements Prior to Commencement of Expanded Operations' and delete Condition A27 and replace with the following:

#### **REQUIREMENTS PRIOR TO COMMENCEMENT OF STAGE 1 OPERATIONS**

- A27. Prior to the commencement of Stage 1 operations, the Applicant must ensure a Final Occupation Certificate, or a Compliance Certificate has been issued for the following:
  - (a) additional pavement and hardstand;
  - (b) stormwater system;
  - (c) fire safety system upgrade; and
  - (d) temporary perimeter access road.
7. Insert new heading and new Condition A27A, immediately after Condition A27 as follows:

#### **REQUIREMENTS PRIOR TO COMMENCEMENT OF STAGE 2 OPERATIONS**

- A27. Prior to the commencement of Stage 2 operations, the Applicant must ensure a Final Occupation Certificate, or a Compliance Certificate has been issued for the following:
- (a) permanent access ring road;
  - (b) the construction of an additional exit from the main transfer building to improve internal traffic flow; and
  - (c) roller shutter within the existing waste transfer building.

8. In Condition A28 delete the word 'expanded' and replace with the words 'Stage 1'.

## IN PART B: ENVIRONMENTAL PERFORMANCE AND MANAGEMENT

9. Insert a new Condition B3(b)v immediately after B3(b)iv as follows:

B3(b)v the asbestos storage area is maintained to not impact vehicle manoeuvrability on the temporary perimeter access road and the permanent access ring road

10. In Condition B8 delete the word 'expanded' and replace with the words 'Stage 1'.

11. Delete Condition B9(a) and replace with the following:

B9(a) conduct a weekly wash-down of any tipping area contaminated with general solid waste (putrescible);

12. In Condition B12 delete the word 'expanded' and replace with the words 'Stage 2'.

13. In Condition B14 delete the word 'expanded' and replace with the words 'Stage 1 operations and Stage 2'.

14. In Condition B16 delete the word 'expanded' and replace with the words 'Stage 2'.

15. In Condition B24 delete the word 'expanded' and replace with the words 'Stage 1'.

16. Delete Condition B25 and replace with the following:

B25. Prior to the commencement of Stage 1 operations and to the satisfaction of FRNSW, the Applicant must ensure:

- (a) the sprinkler system is installed and maintained throughout the site in accordance with Specification E1.5 of the *National Construction Code* (Australian Building Codes Board, 2016) and in accordance with the latest version of AS 2118.1-1999;
- (b) the fire hydrant system is designed, installed, maintained and commissioned in accordance with Specification E1.3 of the *National Construction Code* (Australian Building Codes Board, 2016) with the latest version of AS 2419.1-2005; and
- (c) the temporary perimeter access road and the permanent ring road is constructed in accordance with *Policy No 4: Guidelines for Emergency Vehicle Access* (NSW Fire Brigade, 2010).

17. In Condition B28 delete the word 'expanded' and replace with the words 'Stage 1' and delete number '12' and replace with the number '8'.

18. In Condition B29(h) delete the number '3' and replace with the number '7' and after the semi-colon, delete the word 'and'.

19. In Condition B29(i) delete the full-stop and replace with a semicolon and insert the word 'and'.

20. Insert new Condition B29(j) immediately after Condition B29(i) as follows:

B29(j) the temporary perimeter access road is sealed.

21. In Condition B30 delete the word 'expanded' and replace with the words 'Stage 1 operations and Stage 2'.

22. In Condition B44, insert the following words 'Stage 1' after the words 'Prior to the commencement of'.

## IN PART C: ENVIRONMENTAL MANAGEMENT, REPORTING AND AUDITING

23. In Condition C1(a) delete the word 'construction' and replace with the words 'Stage 1 construction and Stage 2 construction'.

24. Insert new Condition C2(c) immediately after Condition C2(b) as follows:

C2(c) Unexpected finds protocol (see Condition B44).

25. In Condition C4(a) delete the words 'the expanded operation' and replace with the words 'Stage 1 operations and Stage 2 operations'.

**IN APPENDIX A; DEVELOPMENT LAYOUT PLANS**

26. Replace all drawings with the following drawings:

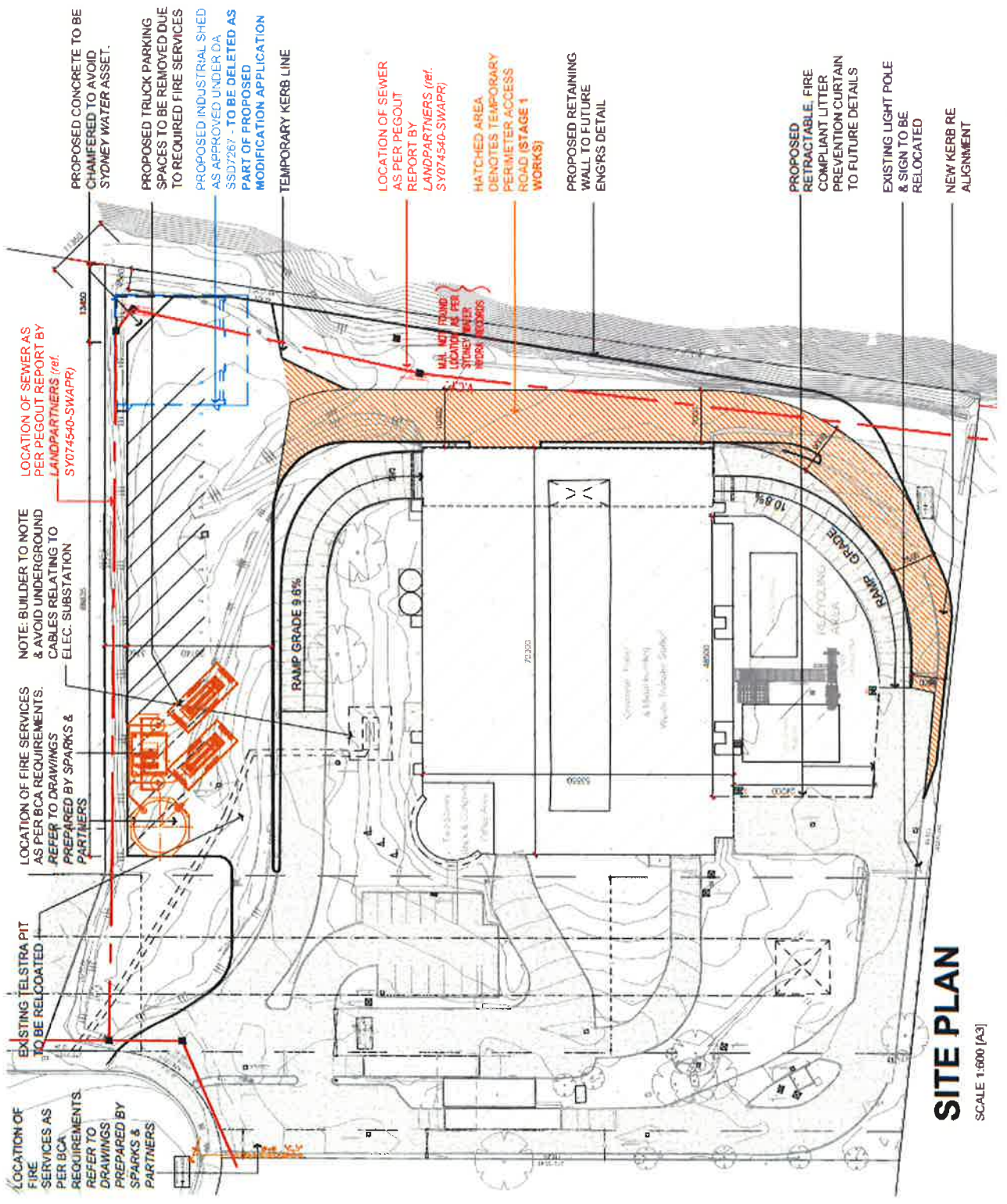
## APPENDIX A:







AMENDMENTS	
A	PRELIMINARY ISSUE
B	PRELIMINARY ISSUE
C	ISSUED FOR SUBMISSION
D	ISSUED FOR SUBMISSION



**SITE PLAN**

SCALE 1:600 [A3]

SHEET NO. CC 02  
PROJECT NO. #64



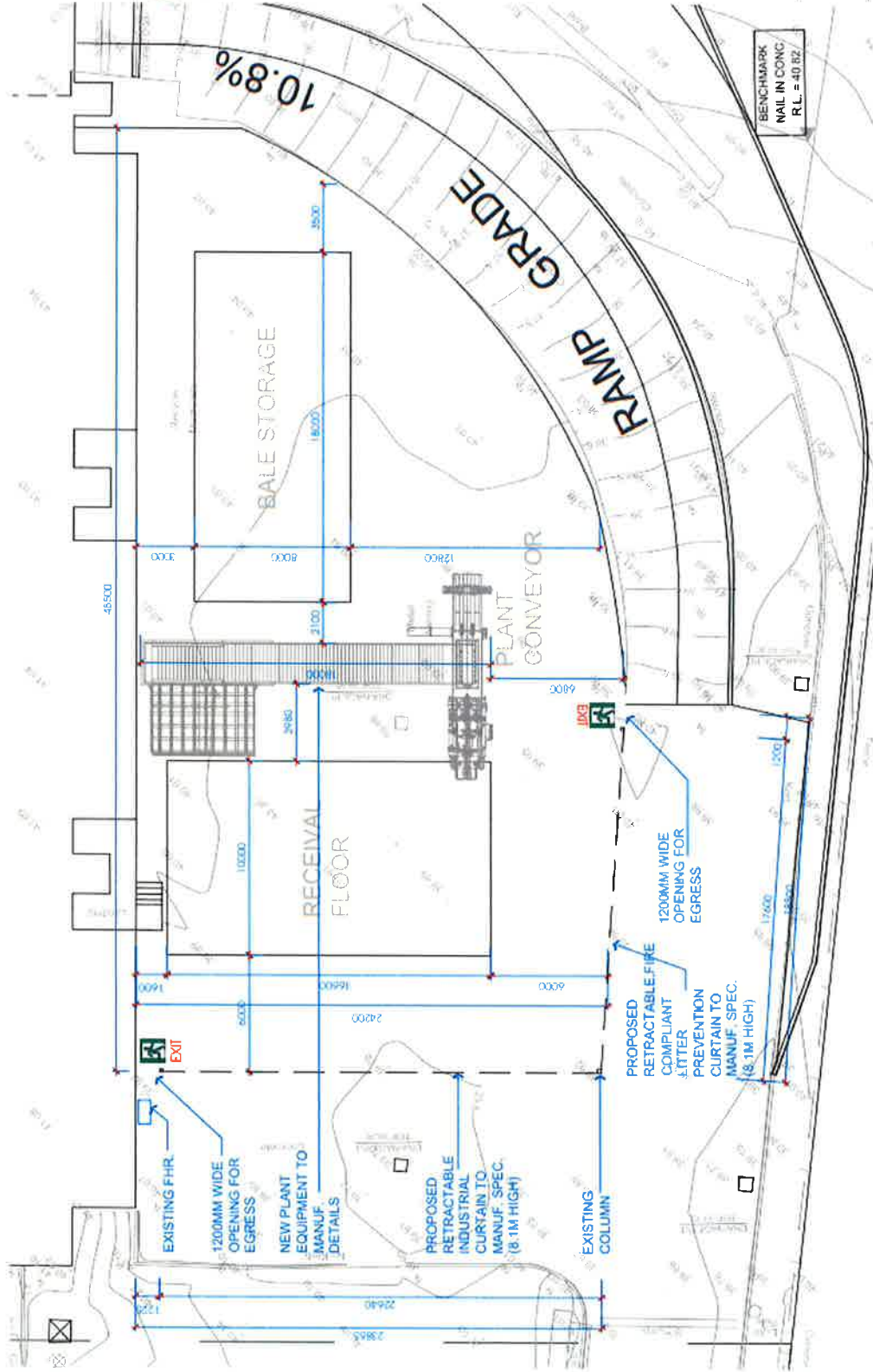


**REVISIONS**

NO.	DESCRIPTION	DATE
1	ISSUED FOR SUBMISSION	02.08.18
2	ISSUED FOR SUBMISSION	04.08.18
3	ISSUED FOR SUBMISSION	22.08.18
4	ISSUED FOR SUBMISSION	28.08.18

**AMENDMENTS**

NO.	DESCRIPTION	DATE
A	PRELIMINARY SCALE	02.08.18
B	PRELIMINARY SCALE	04.08.18
C	ISSUED FOR SUBMISSION	22.08.18
D	ISSUED FOR SUBMISSION	28.08.18



SHEET NO. CC 03  
PROJECT NO. #64

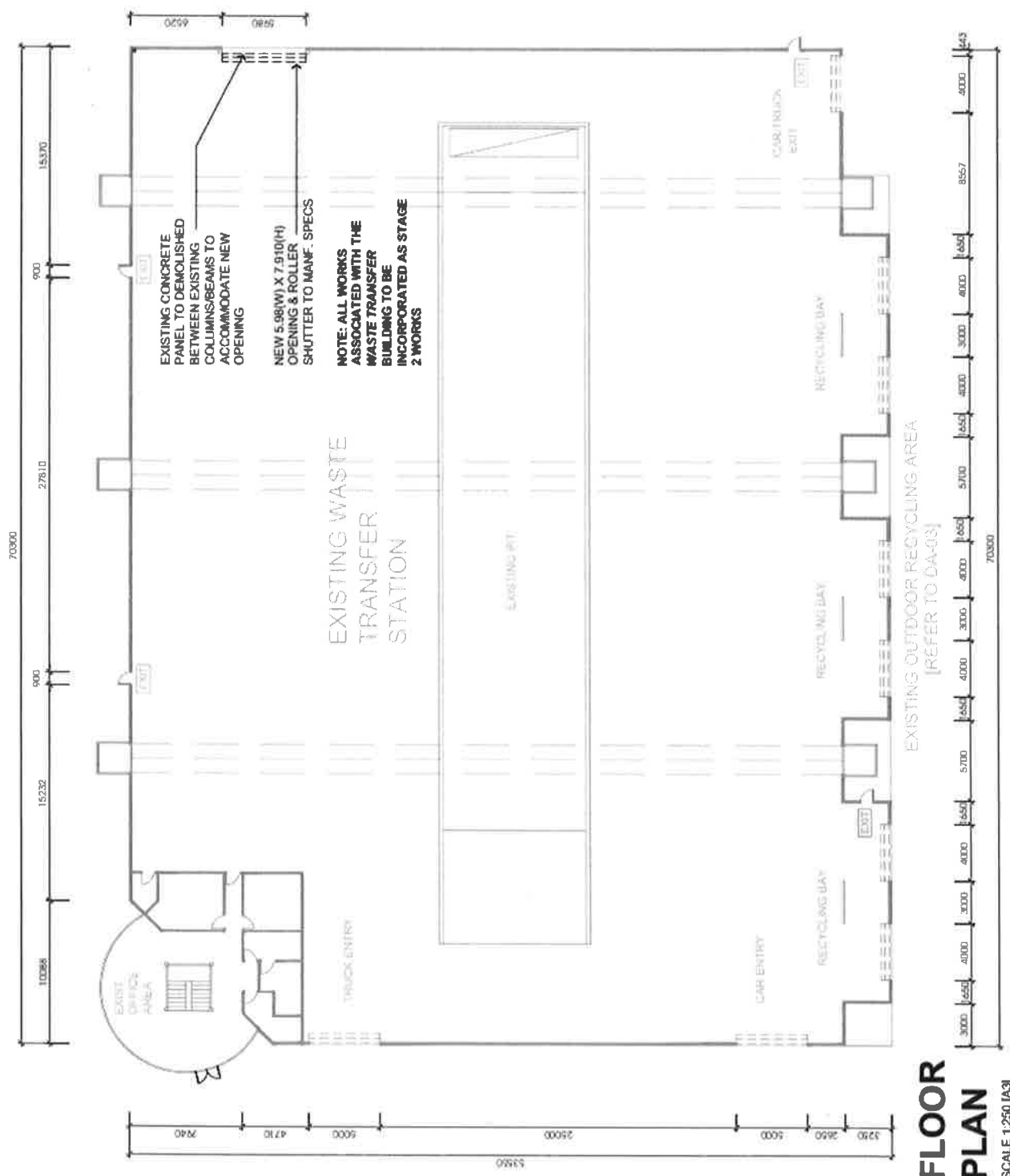
# **PART SITE PLAN** **[RECYCLING AREA]** SCALE 1:200 [A3]







AMENDMENTS	
A. PRELIMINARY ISSUE	12.08.18
B. PRELIMINARY ISSUE	04.08.18
C. ISSUED FOR SUBMISSION	22.08.18
D. REISSUED FOR SUBMISSION	28.08.18



SEEK NO. CC 04

#64



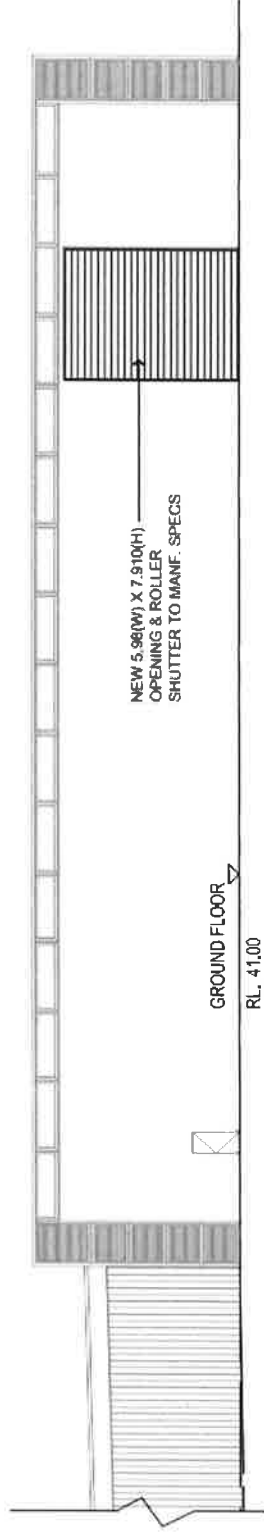


Page 1 of 10



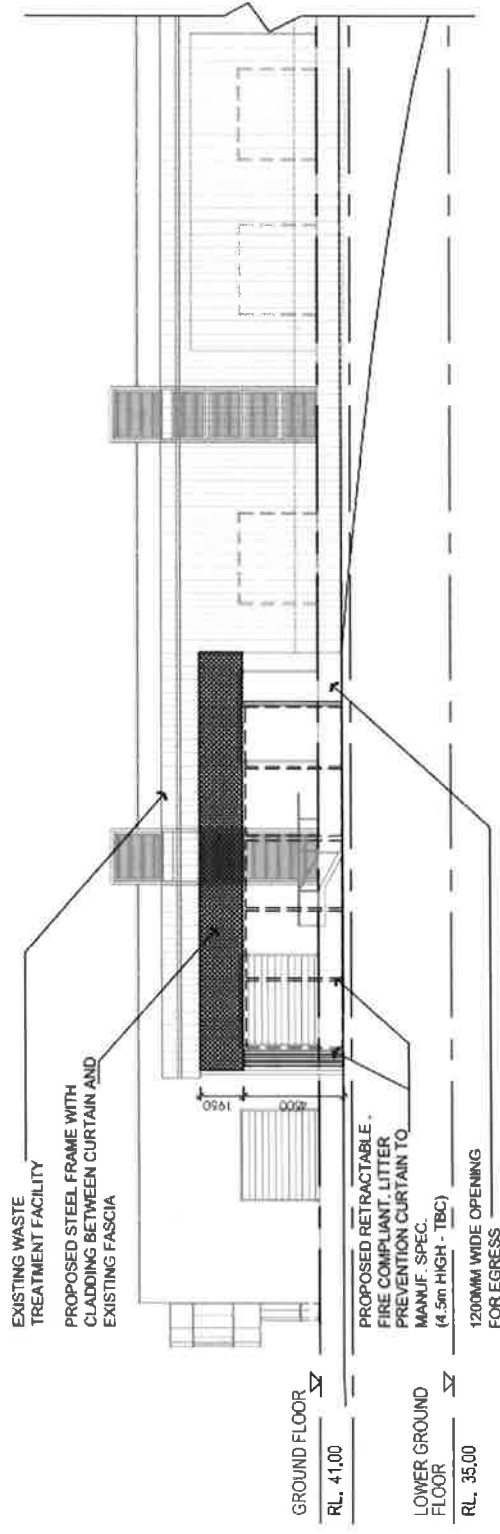
AMENDMENTS

A	PRELIMINARY ISSUE	02.06.18
B	PRELIMINARY ISSUE	04.06.18
C	ISSUED FOR SUBMISSION	22.06.18
D	RESUBMITTED FOR SUBMISSION	28.06.18



**SOUTH ELEVATION  
WASTE TRANSFER BUILDING**

SCALE 1:200 (A3)



**WEST ELEVATION  
RECYCLING AREA**

SCALE 1:200 (A3)

SHEET NO.:



CC 05

PROJECT NO.:

#64





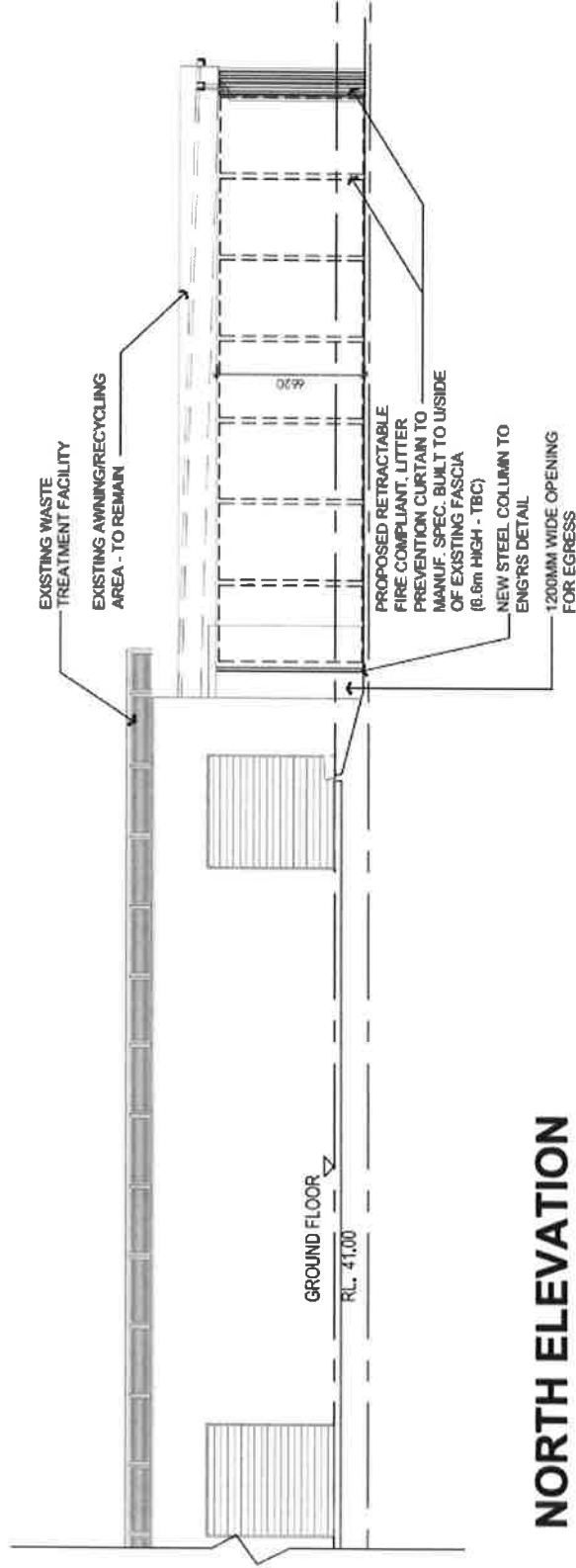
FILE NUMBER



PROJECT NO.

#### AMENDMENTS

A	PRELIMINARY ISSUE	02/08/18
B	PRELIMINARY ISSUE	04/08/18
C	ISSUED FOR SUBMISSION	22/08/18
D	REVISED FOR SUBMISSION	24/08/18



## NORTH ELEVATION RECYCLING AREA

SCALE 1:200 (A3)

SHEET NO.



CC 06

PROJECT NO.

# #64