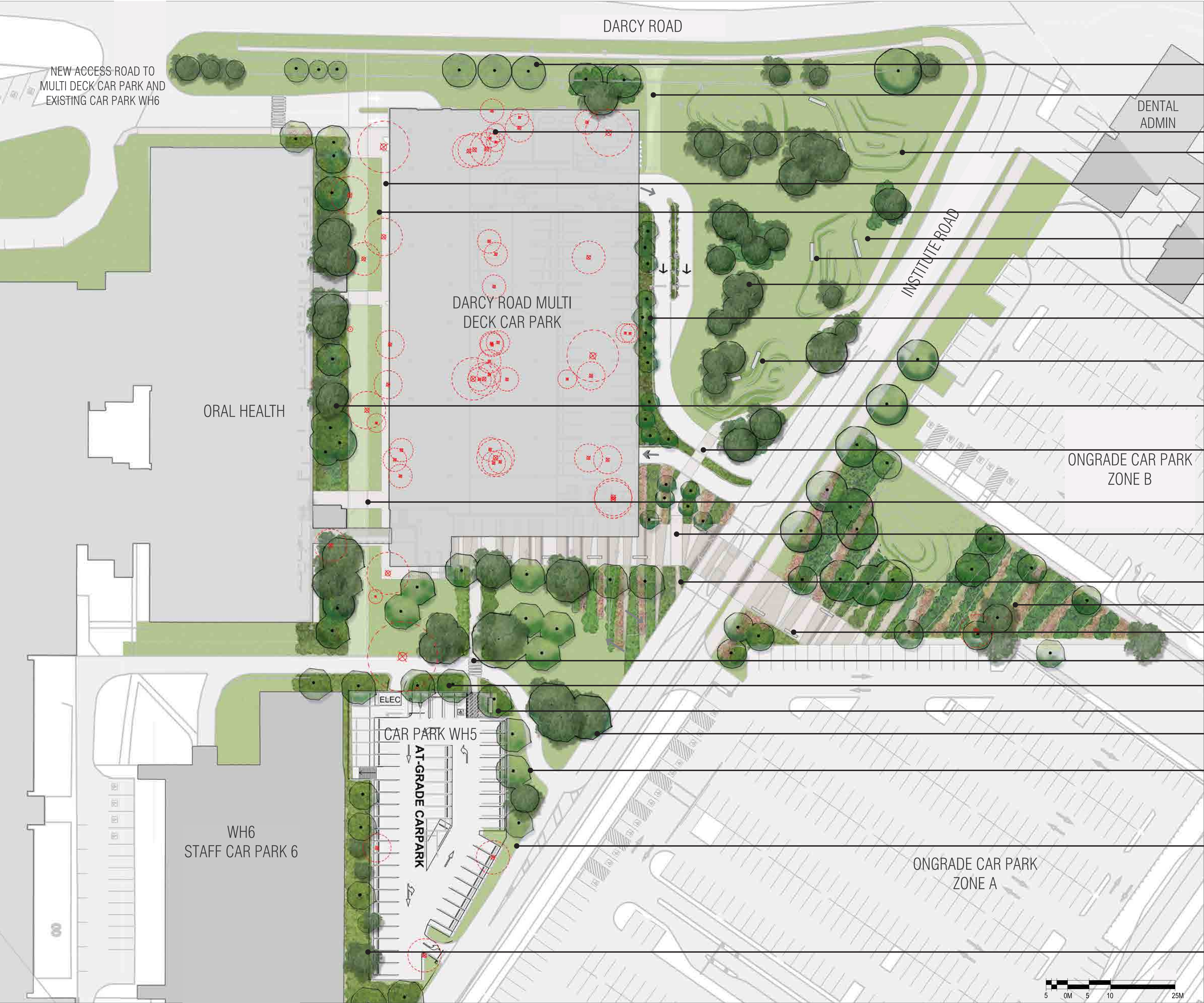


Westmead multi deck car park landscape concepts

November 2015



- Proposed trees
- Service road/ Fire access
- Demolished trees shown dashed
- Proposed berms 1.5 m high
- Proposed mass planting
- Proposed emergency exit footpath
- Proposed turf
- Proposed seating
- Existing trees
- Proposed trees and mass planting
- Proposed seating
- Proposed landscape between Oral health and Car park buildings
- Proposed pedestrian crossing
- Service road/ Fire access
- Colored insitu concrete walkway
- Crushed granite
- Proposed mass planting
- Proposed seating
- Proposed pedestrian crossing
- Proposed trees and mass planting
- Proposed seating
- Existing trees
- Proposed trees
- Proposed turf
- Proposed trees and mass planting

Date	Rev. Description	Rev

Proposed Vegetation

Shrubs, grasses, and groundcovers



Cordyline australis



Dianella caerulea "littel Jess"



Lomandra longifolia "Tanika"



Hardenbergia violacea



Liriope muscari



Lomandra longifolia



Poa labillardieri



Pennisetum alopecuroides



Phormium tenax



Santolina chamaecyparissus



Acacia cognata "limelight"



Westringia fruticosa

Trees



Angophora costata



Corymbia citridora "Scentuous"



Eucalyptus mannifera



Gordonia axillaris



Melaleuca quinquenervia

Proposed Pavement

Colour concrete



Note: Slip rating to meet Australian standards

Proposed Seating
concrete bench

