




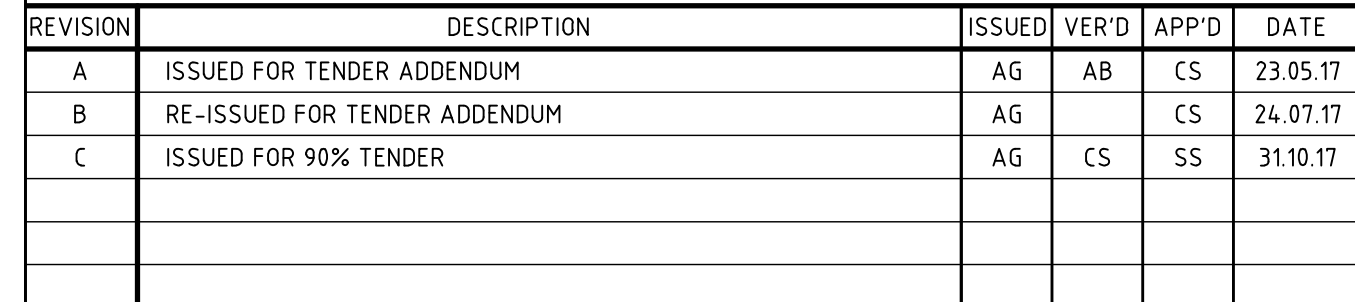
STORMWATER DRAINAGE / SITEWORKS AND GRADING

1. REFER SPECIFICATIONS NOTES FOR STORMWATER AND SITEWORKS GENERAL REQUIREMENTS.
2. ALL WORKS TO BE CARRIED OUT IN ACCORDANCE WITH COUNCIL / RELEVANT AUTHORITY SPECIFICATIONS AND DETAILS.
3. CAD FILES TO BE SUPPLIED IN AUTOCAD FORMAT FOR SETOUT PURPOSES (UPON REQUEST).
4. SUBSOIL DRAINAGE TO RETAINING WALLS, KERBS AND SWALE DRAINS NOT SHOWN FOR CLARITY – REFER RELEVANT DETAILS.
5. REFER STORMWATER LONGITUDINAL SECTIONS FOR PIPE INFORMATION.
6. REFER STORMWATER PIT SCHEDULE FOR PIT INFORMATION.
7. REFER HYDRAULIC ENGINEERS / ARCHITECTS DRAWINGS FOR DOWNPIPE LOCATIONS AND SIZING.
8. ALL STORMWATER INLET PITS WITHIN CARPARK AREA TO BE FITT WITH 'ENVIROPOD' INSERT AND 200 MICRON FILTER.
9. PROVIDE DRAINAGE CONNECTIONS TO KERB IN ACCORDANCE WITH COUNCIL STANDARD DETAILS AND SPECIFICATION.
10. CONTRACTOR TO ALLOW TO ADJUST AND LIAISE WITH RELEVANT SERVICE AUTHORITIES IN RELATION TO EXISTING SERVICE ADJUSTMENT AND MODIFICATIONS.



DIAL BEFORE YOU DIAL
www.1100.co

<h1>NOT FOR CONSTRUCTION</h1>	
TITLE FORMWORK MANAGEMENT AND LEVELS PLAN - SHEET 1	JOB NUMBER NL16619
	DRAWING NUMBER CC3.01
	DRAWING SHEET SIZE =



ARCHITECT

ASPECT Studios™
MISHO+ASSOCIATES

THE COPYRIGHT OF THIS DRAWING BELONGS WITH NORTHROP
CONSULTING ENGINEERS PTY LTD.



DRAWING TITLE

**STORMWATER MANAGEMENT
AND LEVELS PLAN
- SHEET 2**

JOB NUMBER		NL166192	
DRAWING NUMBER		REVISION	
CC3.02		C	
DRAWING SHEET SIZE = A1			

STORMWATER DRAINAGE / SITEWORKS AND GRADING


1. REFER SPECIFICATIONS NOTES FOR STORMWATER AND SITEWORKS GENERAL REQUIREMENTS.
2. ALL WORKS TO BE CARRIED OUT IN ACCORDANCE WITH COUNCIL / RELEVANT AUTHORITY SPECIFICATIONS AND DETAILS.
3. CAD FILES TO BE SUPPLIED IN AUTOCAD FORMAT FOR SETOUT PURPOSES (UPON REQUEST).
4. SUBSOIL DRAINAGE TO RETAINING WALLS, KERBS AND SWALE DRAINS NOT SHOWN FOR CLARITY – REFER RELEVANT DETAILS.
5. REFER STORMWATER LONGITUDINAL SECTIONS FOR PIPE INFORMATION.
6. REFER STORMWATER PIT SCHEDULE FOR PIT INFORMATION.
7. REFER HYDRAULIC ENGINEERS / ARCHITECTS DRAWINGS FOR DOWNPIPE LOCATIONS AND SIZING.
8. ALL STORMWATER INLET PITS WITHIN CARPARK AREA TO BE FITT WITH 'ENVIROPOD' INSERT AND 200 MICRON FILTER.
9. PROVIDE DRAINAGE CONNECTIONS TO KERB IN ACCORDANCE WITH COUNCIL STANDARDS AND SPECIFICATION.
10. CONTRACTOR TO ALLOW TO ADJUST AND LIAISE WITH RELEVANT SERVICE AUTHORITIES IN RELATION TO EXISTING SERVICE ADJUSTMENT AND MODIFICATIONS.





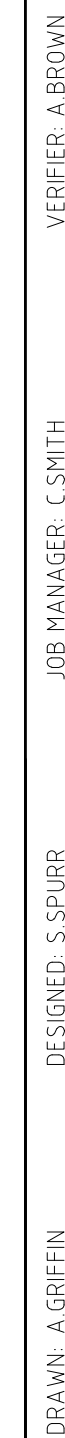
STORMWATER DRAINAGE / SITEWORKS AND GRADING

1. REFER SPECIFICATIONS NOTES FOR STORMWATER AND SITEWORKS GENERAL REQUIREMENTS.
2. ALL WORKS TO BE CARRIED OUT IN ACCORDANCE WITH COUNCIL / RELEVANT AUTHORITY SPECIFICATIONS AND DETAILS.
3. CAD FILES TO BE SUPPLIED IN AUTOCAD FORMAT FOR SETOUT PURPOSES (UPON REQUEST).
4. SUBSOIL DRAINAGE TO RETAINING WALLS, KERBS AND SWALE DRAINS NOT SHOWN FOR CLARITY – REFER RELEVANT DETAILS.
5. REFER STORMWATER LONGITUDINAL SECTIONS FOR PIPE INFORMATION.
6. REFER STORMWATER PIT SCHEDULE FOR PIT INFORMATION.
7. REFER HYDRAULIC ENGINEERS / ARCHITECTS DRAWINGS FOR DOWNPIPE LOCATIONS AND SIZING.
8. ALL STORMWATER INLET PITS WITHIN CARPARK AREA TO BE FITT WITH 'ENVIROPOD' INSERT AND 200 MICRON FILTER.
9. PROVIDE DRAINAGE CONNECTIONS TO KERB IN ACCORDANCE WITH COUNCIL STANDARD DETAILS AND SPECIFICATION.
10. CONTRACTOR TO ALLOW TO ADJUST AND LIAISE WITH RELEVANT SERVICE AUTHORITIES IN RELATION TO EXISTING SERVICE ADJUSTMENT AND MODIFICATIONS.



DIAL BEFORE YOU DIAL
www.1100.co


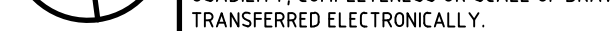


NOT FOR CONSTRUCTION							
TITLE FORMWORK MANAGEMENT AND LEVELS PLAN - SHEET 4	JOB NUMBER NL16619 <hr/> <table style="width: 100%; border-collapse: collapse;"> <tr> <td style="width: 60%; border-bottom: 1px solid black; padding: 2px;">DRAWING NUMBER</td> <td style="width: 40%; border-bottom: 1px solid black; padding: 2px;">R</td> </tr> <tr> <td style="text-align: center; padding: 10px;">CC3.04</td> <td></td> </tr> <tr> <td colspan="2" style="padding: 2px;">DRAWING SHEET SIZE =</td> </tr> </table>	DRAWING NUMBER	R	CC3.04		DRAWING SHEET SIZE =	
DRAWING NUMBER	R						
CC3.04							
DRAWING SHEET SIZE =							

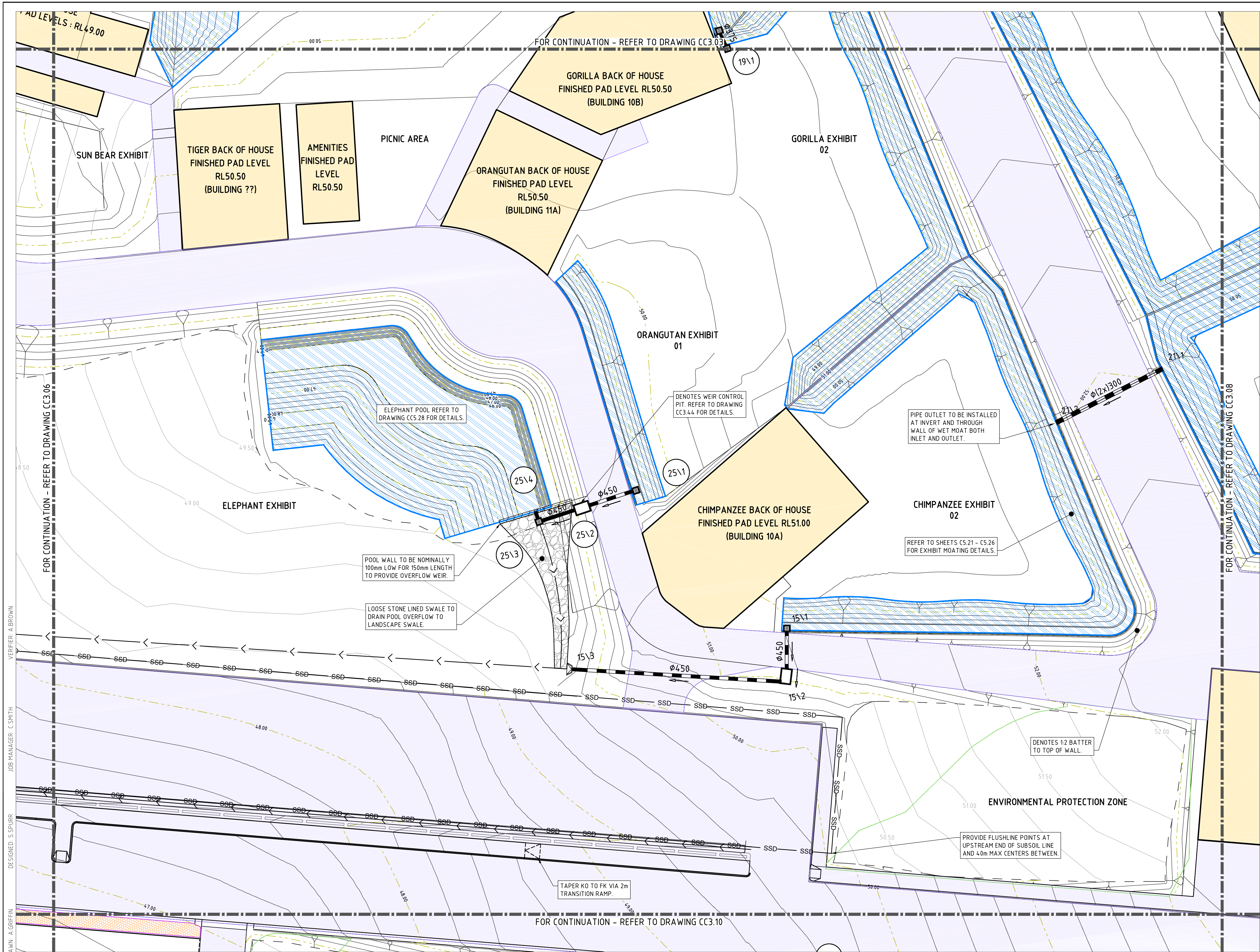


STORMWATER DRAINAGE / SITEWORKS AND GRADING

1. REFER SPECIFICATIONS NOTES FOR STORMWATER AND SITEWORKS GENERAL REQUIREMENTS.
2. ALL WORKS TO BE CARRIED OUT IN ACCORDANCE WITH COUNCIL / RELEVANT AUTHORITY SPECIFICATIONS AND DETAILS.
3. CAD FILES TO BE SUPPLIED IN AUTOCAD FORMAT FOR SETOUT PURPOSES (UPON REQUEST).
4. SUBSOIL DRAINAGE TO RETAINING WALLS, KERBS AND SWALE DRAINS NOT SHOWN FOR CLARITY - REFER RELEVANT DETAILS.
5. REFER 'STORMWATER LONGITUDINAL SECTIONS FOR PIPE INFORMATION'.
6. REFER 'STORMWATER PIT SCHEDULE FOR PIT INFORMATION'.
7. REFER HYDRAULIC ENGINEERS / ARCHITECTS DRAWINGS FOR DRAINPIPE LOCATIONS AND SIZING.
8. ALL STORMWATER INLET PITS WITHIN CARPARK AREA TO BE FITT WITH 'ENVIROPOD' INSERT AND 200 MICRON FILTER.
9. PROVIDE DRAINAGE CONNECTIONS TO KERB IN ACCORDANCE WITH COUNCIL STANDARD DETAILS AND SPECIFICATION.
10. CONTRACTOR TO ALLOW TO ADJUST AND LIAISE WITH RELEVANT SERVICE AUTHORITIES IN RELATION TO EXISTING SERVICE ADJUSTMENT AND MODIFICATIONS.



REVISION	DESCRIPTION	ISSUED	VER'D	APP'D	DATE	CLIENT	ARCHITECT	PROJECT	DRAWING TITLE	JOB NUMBER	
A	ISSUED FOR TENDER ADDENDUM	AG	AB	CS	23.05.17	 SIGNATURE Project Management	 ASPECT Studios™ MISHO ASSOCIATES	 NORTHROP Newcastle Suite 4, 215 Pacific Hwy, Charlestown NSW 2290 P.O. Box 180, Charlestown NSW 2290 Ph (02) 4943 1777 Fax (02) 4943 1577 Email newcastle@northrop.com.au ABN 81 004 433 100	SYDNEY ZOO GREAT WESTERN HIGHWAY BUNGARRIBEE NSW	STORMWATER MANAGEMENT AND LEVELS PLAN - SHEET 5	NL166192
B	RE-ISSUED FOR TENDER ADDENDUM	AG	CS	24.07.17							
C	ISSUED FOR 90% TENDER	AG	CS	31.10.17							
DRAWING NOT TO BE USED FOR CONSTRUCTION UNLESS VERIFICATION SIGNATURE HAS BEEN ADDED							THE COPYRIGHT OF THIS DRAWING REMAINS WITH NORTHROP CONSULTING ENGINEERS PTY LTD.	 PLANS 1:250	DRAWING SHEET SIZE = A1		



LEGEND

BOUNDARY LINE

**BUILDING 10
RL4.100**

**STORMWATER PIPE,
SIZE AND DIRECTION**

GRATED INLET PIT

CONCRETE HEADWALL

KERB INLET PIT

**STORMWATER PIT TAG
STRUCTURE No / LINE ID**

**DENOTES LOOSE STONE EROSION
PROTECTION U.N.O**

**V-SHAPED CHANNEL - REFER TO
DETAIL SHEET CC3.43**

**DENOTES DISH DRAIN.
REFER TO DRAWING CC4.23 FOR DETAIL**

**SUBSOIL DRAINAGE LINE. PROVIDE
SUBSOIL FLUSHING POINTS AT MAX
40m CENTRES (TYPICAL)**

**DENOTES STORMWATER STORAGE
BASIN / WATER BODY.**

**DENOTES BIO-FILTRATION BASIN.
REFER TO DETAIL SHEET CC3.44**

**DENOTES GENERAL PAVEMENT AREA.
REFER TO DRAWING 4.00 SERIES.**

DENOTES BUILDING PAD

**DENOTES MEDIAN DRAINAGE CHANNEL.
REFER TO DETAILS SHEET CC3.42**

DESIGN CONTOURS

EXISTING CONTOURS

**ENVIRONMENTAL PROTECTION ZONE
BOUNDARY**

DENOTES EXISTING SEWER MAIN

STORMWATER DRAINAGE / SITWORKS AND GRADING

- REFER SPECIFICATIONS NOTES FOR STORMWATER AND SITWORKS GENERAL REQUIREMENTS.
- ALL WORKS TO BE CARRIED OUT IN ACCORDANCE WITH COUNCIL / RELEVANT AUTHORITY SPECIFICATIONS AND DETAILS.
- CAD FILES TO BE SUPPLIED IN AUTOCAD FORMAT FOR SETOUT PURPOSES (UPON REQUEST).
- SUBSOIL DRAINAGE TO RETAINING WALLS, KERBS AND SWALE DRAINS NOT SHOWN FOR CLARITY - REFER RELEVANT DETAILS.
- REFER 'STORMWATER LONGITUDINAL SECTIONS FOR PIPE INFORMATION.
- REFER 'STORMWATER PIT SCHEDULE FOR PIT INFORMATION.
- REFER HYDRAULIC ENGINEERS / ARCHITECTS DRAWINGS FOR DOWNPIPE LOCATIONS AND SIZING.
- ALL STORMWATER INLET PITS WITHIN CARPARK AREA TO BE FITTED WITH 'ENVIROPOD' INSERT AND 200 MICRON FILTER.
- PROVIDE DRAINAGE CONNECTIONS TO KERB IN ACCORDANCE WITH COUNCIL STANDARD DETAILS AND SPECIFICATION.
- CONTRACTOR TO ALLOW TO ADJUST AND LIAISE WITH RELEVANT SERVICE AUTHORITIES IN RELATION TO EXISTING SERVICE ADJUSTMENT AND MODIFICATIONS.



NOT FOR CONSTRUCTION

REVISION	DESCRIPTION	ISSUED	VER'D	APP'D	DATE
A	ISSUED FOR TENDER ADDENDUM	AG	AB	CS	23.05.17
B	RE-ISSUED FOR TENDER ADDENDUM	AG	CS	CS	24.07.17
C	ISSUED FOR 90% TENDER	AG	CS	SS	31.10.17

SIGNATURE
Project Management

DRAWING NOT TO BE USED FOR CONSTRUCTION UNLESS VERIFICATION SIGNATURE HAS BEEN ADDED

ASPECT Studios™
MISHO ASSOCIATES

ARCHITECT

CLIENT

THE COPYRIGHT OF THIS DRAWING REMAINS WITH NORTHROP CONSULTING ENGINEERS PTY LTD.

NORTHROP
Newcastle

Suite 4, 215 Pacific Hwy, Charlestown NSW 2290
P.O. Box 180, Charlestown NSW 2290
Ph (02) 4943 1777 Fax (02) 4943 1577
Email newcastle@northrop.com.au ABN 81 094 433 100

PLANS 1:250

0 2.5 5 7.5 10 12.5m

PROJECT

SYDNEY ZOO
GREAT WESTERN HIGHWAY
BUNGARRIBEE NSW

DRAWING TITLE

**STORMWATER MANAGEMENT
AND LEVELS PLAN
- SHEET 7**

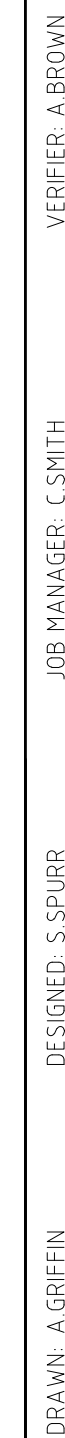
JOB NUMBER
NL166192

DRAWING NUMBER
CC3.07

REVISION
C

DRAWING SHEET SIZE = A1

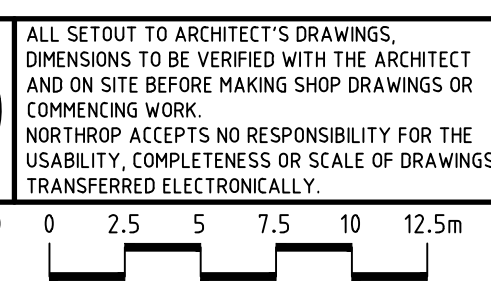
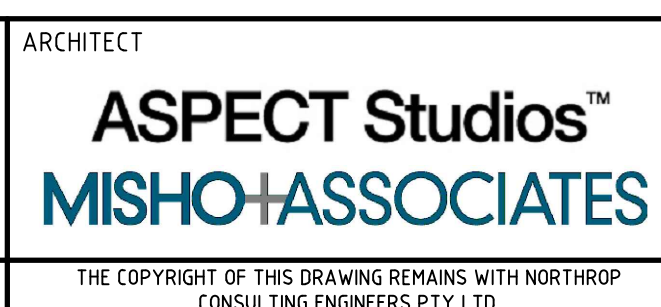
NOT FOR CONSTRUCTION



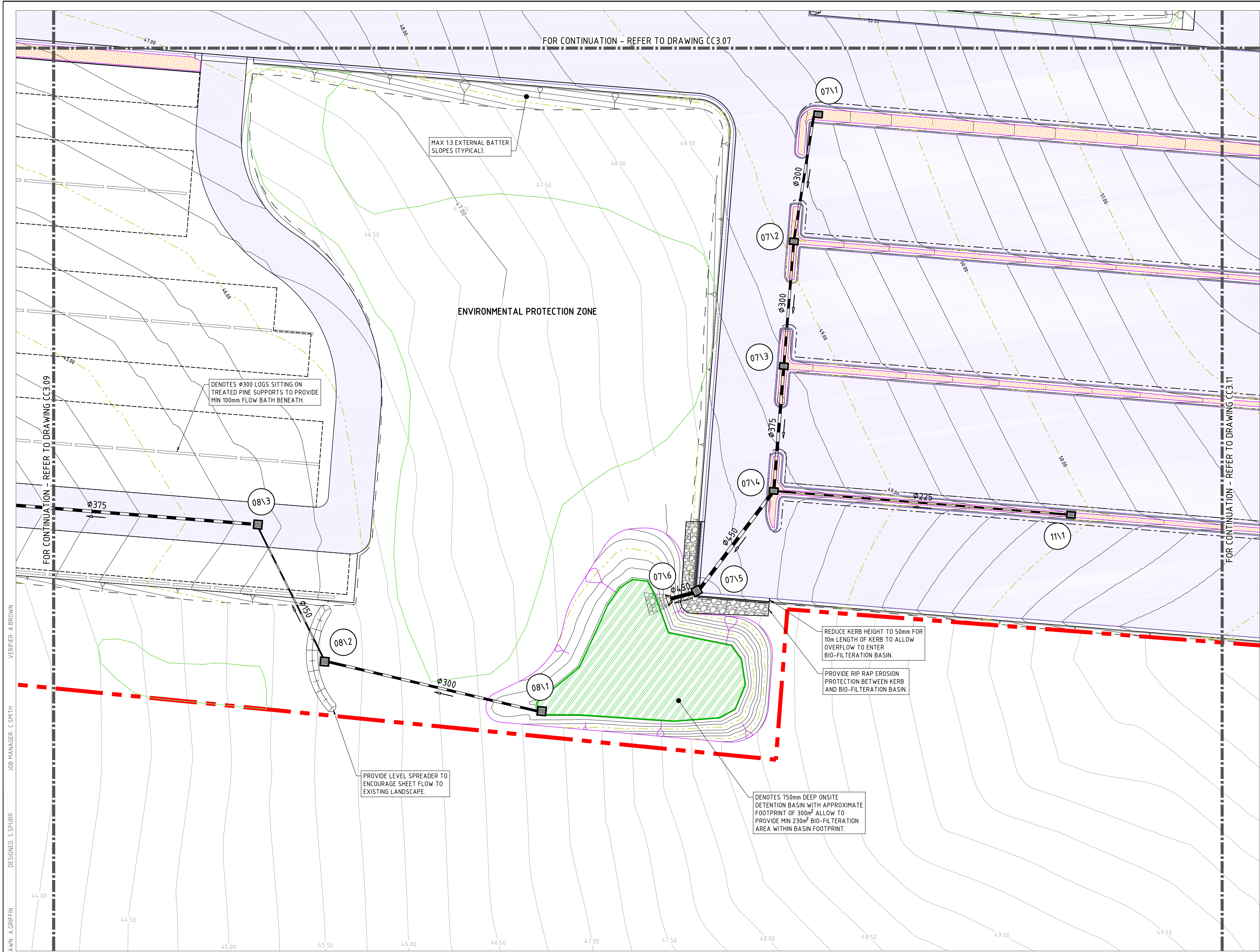
1. REFER SPECIFICATIONS NOTES FOR STORMWATER AND SITEWORKS GENERAL REQUIREMENTS.
2. ALL WORKS TO BE CARRIED OUT IN ACCORDANCE WITH COUNCIL / RELEVANT AUTHORITY SPECIFICATIONS AND DETAILS.
3. CAD FILES TO BE SUPPLIED IN AUTOCAD FORMAT FOR SETOUT PURPOSES (UPON REQUEST).
4. SUBSOIL DRAINAGE TO RETAINING WALLS, KERBS AND SWALE DRAINS NOT SHOWN FOR CLARITY - REFER RELEVANT DETAILS.
5. REFER 'STORMWATER LONGITUDINAL SECTIONS FOR PIPE INFORMATION.
6. REFER 'STORMWATER PIT SCHEDULE FOR PIT INFORMATION.
7. REFER HYDRAULIC ENGINEERS / ARCHITECTS DRAWINGS FOR DOWNPIPE LOCATIONS AND SIZING.
8. ALL STORMWATER INLET PITS WITHIN CARPARK AREA TO BE FITTED WITH 'ENVIROPOD' INSERT AND 200 MICRON FILTER.
9. PROVIDE DRAINAGE CONNECTIONS TO KERB IN ACCORDANCE WITH COUNCIL STANDARD DETAILS / SPECIFICATION.
10. CONTRACTOR TO ALLOW TO ADJUST AND LIAISE WITH RELEVANT SERVICE AUTHORITIES IN RELATION TO EXISTING SERVICE ADJUSTMENT AND MODIFICATIONS.



CLIENT	 <p>SIGNATURE Project Management</p>
DRAWING NOT TO BE USED FOR CONSTRUCTION UNLESS VERIFICATION SIGNATURE HAS BEEN ADDED	



JOB NUMBER	
NL166192	
DRAWING NUMBER	REVISION
CC3.09	C
DRAWING SHEET SIZE - A1	



LEGEND

BUILDING 10
RL.41.00

BOUNDARY LINE

DENOTES BUILDING NUMBER AND FINISHED PAD LEVEL

Ø375

STORMWATER PIPE, SIZE AND DIRECTION

GRATED INLET PIT

CONCRETE HEADWALL

KERB INLET PIT

34\02

STORMWATER PIT TAG
STRUCTURE No / LINE ID

DENOTES LOOSE STONE EROSION PROTECTION U.N.O

V-SHAPED CHANNEL - REFER TO DETAIL SHEET CC3.43

DENOTES DISH DRAIN. REFER TO DRAWING CC4.23 FOR DETAIL

SSD

SUBSOIL DRAINAGE LINE. PROVIDE SUBSOIL FLUSHING POINTS AT MAX 40m CENTRES (TYPICAL)

DENOTES STORMWATER STORAGE BASIN / WATER BODY.

DENOTES BIO-FILTRATION BASIN. REFER TO DETAIL SHEET CC3.44

DENOTES GENERAL PAVEMENT AREA. REFER TO DRAWING 4.00 SERIES.

DENOTES BUILDING PAD

DENOTES MEDIAN DRAINAGE CHANNEL. REFER TO DETAILS SHEET CC3.42

41.00

DESIGN CONTOURS

47.00

EXISTING CONTOURS

ENVIRONMENTAL PROTECTION ZONE BOUNDARY

S

DENOTES EXISTING SEWER MAIN

STORMWATER DRAINAGE / SITWORKS AND GRADING

1. REFER SPECIFICATIONS NOTES FOR STORMWATER AND SITWORKS GENERAL REQUIREMENTS.
2. ALL WORKS TO BE CARRIED OUT IN ACCORDANCE WITH COUNCIL / RELEVANT AUTHORITY SPECIFICATIONS AND DETAILS.
3. CAD FILES TO BE SUPPLIED IN AUTOCAD FORMAT FOR SETOUT PURPOSES (UPON REQUEST).
4. SUBSOIL DRAINAGE TO RETAINING WALLS, KERBS AND SWALE DRAINS NOT SHOWN FOR CLARITY - REFER RELEVANT DETAILS.
5. REFER 'STORMWATER LONGITUDINAL SECTIONS FOR PIPE INFORMATION.
6. REFER 'STORMWATER PIT SCHEDULE FOR PIT INFORMATION.
7. REFER HYDRAULIC ENGINEERS / ARCHITECTS DRAWINGS FOR DOWNPIPE LOCATIONS AND SIZING.
8. ALL STORMWATER INLET PITS WITHIN CARPARK AREA TO BE FITTED WITH 'ENVIROPOD' INSERT AND 200 MICRON FILTER.
9. PROVIDE DRAINAGE CONNECTIONS TO KERB IN ACCORDANCE WITH COUNCIL STANDARD DETAILS AND SPECIFICATION.
10. CONTRACTOR TO ALLOW TO ADJUST AND LIAISE WITH RELEVANT SERVICE AUTHORITIES IN RELATION TO EXISTING SERVICE ADJUSTMENT AND MODIFICATIONS.



NOT FOR CONSTRUCTION

REVISION	DESCRIPTION	ISSUED	VER'D	APP'D	DATE
A	ISSUED FOR TENDER ADDENDUM	AG	AB	CS	23.05.17
B	RE-ISSUED FOR TENDER ADDENDUM	AG	CS	CS	24.07.17
C	ISSUED FOR 90% TENDER	AG	CS	SS	31.10.17

CLIENT

SIGNATURE
Project Management

DRAWING NOT TO BE USED FOR CONSTRUCTION UNLESS VERIFICATION SIGNATURE HAS BEEN ADDED

ARCHITECT

ASPECT Studios™
MISHO+ASSOCIATES

THE COPYRIGHT OF THIS DRAWING REMAINS WITH NORTHROP CONSULTING ENGINEERS PTY LTD.

ALL SETOUT TO ARCHITECT'S DRAWINGS. DIMENSIONS TO BE VERIFIED WITH THE ARCHITECT AND ON SITE BEFORE MAKING SHOP DRAWINGS OR COMMENCING WORK. NORTHROP ACCEPTS NO RESPONSIBILITY FOR THE USABILITY, COMPLETENESS OR SCALE OF DRAWINGS TRANSFERRED ELECTRONICALLY.

PLANS 1:250

0 2.5 5 7.5 10 12.5m

NORTHROP
Newcastle

Suite 4, 215 Pacific Hwy, Charlestown NSW 2290
P.O. Box 180, Charlestown NSW 2290
Ph (02) 4943 1777 Fax (02) 4943 1577
Email newcastle@northrop.com.au ABN 81 094 433 100

PROJECT

SYDNEY ZOO
GREAT WESTERN HIGHWAY
BUNGARRIBEE NSW

DRAWING TITLE

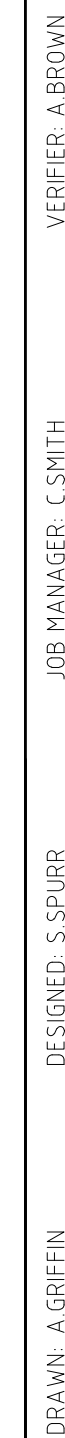
STORMWATER MANAGEMENT
AND LEVELS PLAN
- SHEET 10

JOB NUMBER

NL166192

DRAWING NUMBER	REVISION
CC3.10	C


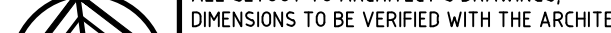


DRAWING SHEET SIZE = A1



STORMWATER DRAINAGE / SITEWORKS AND GRADING

1. REFER SPECIFICATIONS NOTES FOR STORMWATER AND SITEWORKS GENERAL REQUIREMENTS.
2. ALL WORKS TO BE CARRIED OUT IN ACCORDANCE WITH COUNCIL / RELEVANT AUTHORITY SPECIFICATIONS AND DETAILS.
3. CAD FILES TO BE SUPPLIED IN AUTOCAD FORMAT FOR SETOUT PURPOSES (UPON REQUEST).
4. SUBSOIL DRAINAGE TO RETAINING WALLS, KERBS AND SWALE DRAINS NOT SHOWN FOR CLARITY - REFER RELEVANT DETAILS.
5. REFER 'STORMWATER LONGITUDINAL SECTIONS FOR PIPE INFORMATION'.
6. REFER 'STORMWATER PIT SCHEDULE FOR PIT INFORMATION'.
7. REFER HYDRAULIC ENGINEERS / ARCHITECTS DRAWINGS FOR DRAINPIPE LOCATIONS AND SIZING.
8. ALL STORMWATER INLET PITS WITHIN CARPARK AREA TO BE FITT WITH 'ENVIROPOD' INSERT AND 200 MICRON FILTER.
9. PROVIDE DRAINAGE CONNECTIONS TO KERB IN ACCORDANCE WITH COUNCIL STANDARD DETAILS AND SPECIFICATION.
10. CONTRACTOR TO ALLOW TO ADJUST AND LIAISE WITH RELEVANT SERVICE AUTHORITIES IN RELATION TO EXISTING SERVICE ADJUSTMENT AND MODIFICATIONS.



REVISION	DESCRIPTION	ISSUED	VER'D	APP'D	DATE	CLIENT	ARCHITECT	PROJECT	DRAWING TITLE	JOB NUMBER	
A	ISSUED FOR TENDER ADDENDUM	AG	AB	CS	23.05.17	 SIGNATURE Project Manager	 ASPECT Studios™ MISHO+ASSOCIATES	 NORTHROP Newcastle Suite 4, 215 Pacific Hwy, Charlestown NSW 2290 P.O. Box 180, Charlestown NSW 2290 Ph (02) 4943 1777 Fax (02) 4943 1577 Email newcastle@northrop.com.au ABN 81 094 433 100	SYDNEY ZOO GREAT WESTERN HIGHWAY BUNGARRIBEE NSW	STORMWATER MANAGEMENT AND LEVELS PLAN - SHEET 11	NL166192
B	RE-ISSUED FOR TENDER ADDENDUM	AG		CS	24.07.17						
C	ISSUED FOR 90% TENDER	AG	CS	SS	31.10.17						
DRAWING NOT TO BE USED FOR CONSTRUCTION UNLESS VERIFICATION SIGNATURE HAS BEEN ADDED							THE COPYRIGHT OF THIS DRAWING REMAINS WITH NORTHROP CONSULTING ENGINEERS PTY LTD.		DRAWING NUMBER		REVISION
							 PLANS 1:250		CC3.11		C
DRAWING SHEET SIZE = A1											