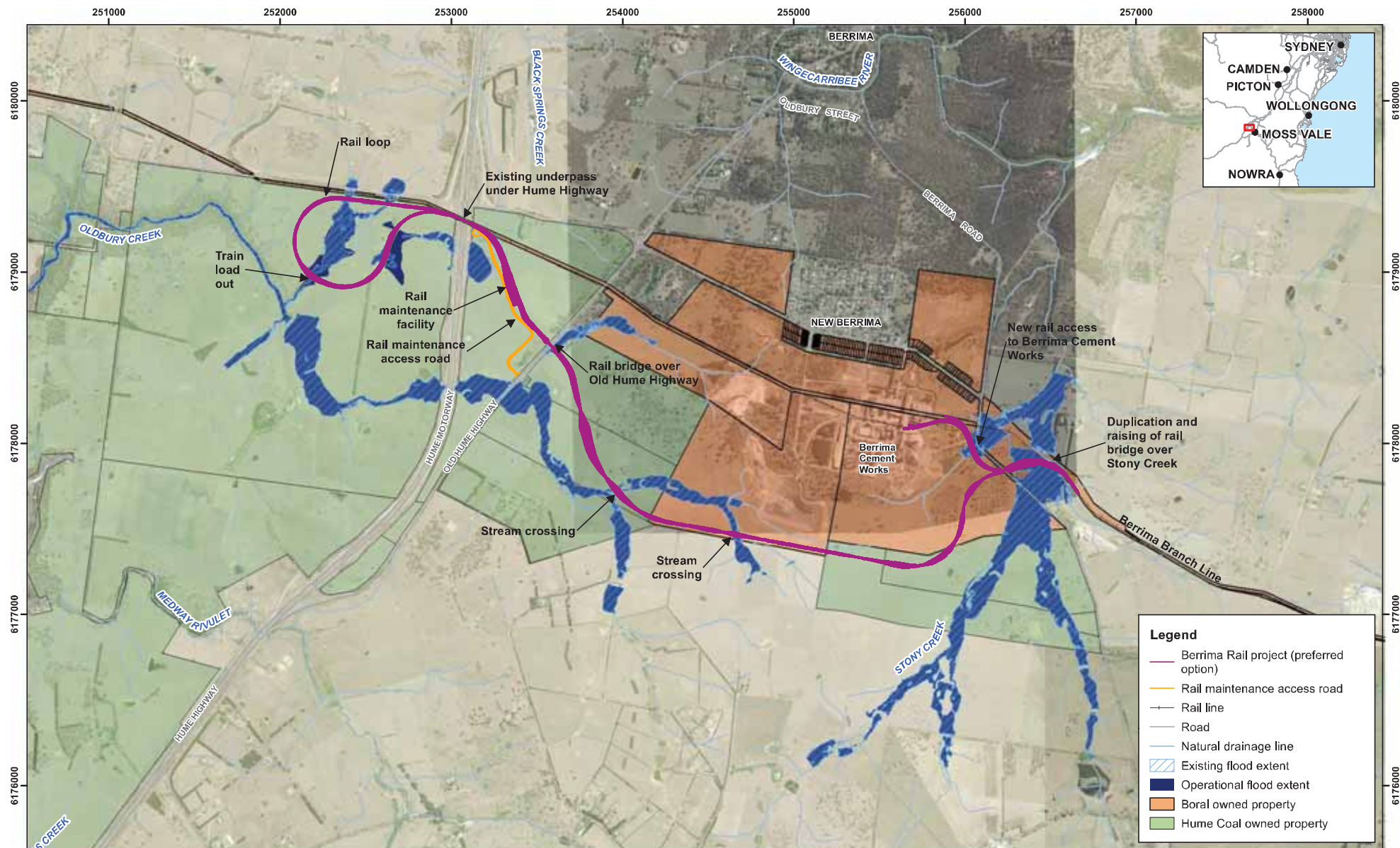


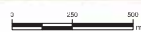
# Appendix C

**PREFERRED OPTION FLOOD MAPS**



Map: 2200569A\_GIS\_010\_A7

Author: RP



1:20,000

Date: 15/11/2016

Approved by: LR

Data source: © Land and Property Information 2015, Hume Coal

Coordinate system: GDA 1994 MGA Zone 56

Scale ratio correct when printed at A3

© WSP | Parsons Brinckerhoff Asia Pacific (PAB) Copyright in the drawings, information and data recorded is the property of WSP | PB. This document and the information are solely for the use of the authorised recipient and this document may not be used, copied or reproduced in whole or part for any purpose other than that which it was supplied by WSP | PB. WSP | PB makes no representation, undertaking, no duty and accepts no responsibility to any third party who may use or rely upon this document or the information. WSP | PB and Parsons Brinckerhoff are not responsible for any and all errors or omissions in this document.

WSP | PB | Parsons Brinckerhoff | Hume Coal | 2200569A | SURFACE WATER STUDY BERRIMA | 04/09/2016 | Map2200569A | G.S. 010 | A7.mxd



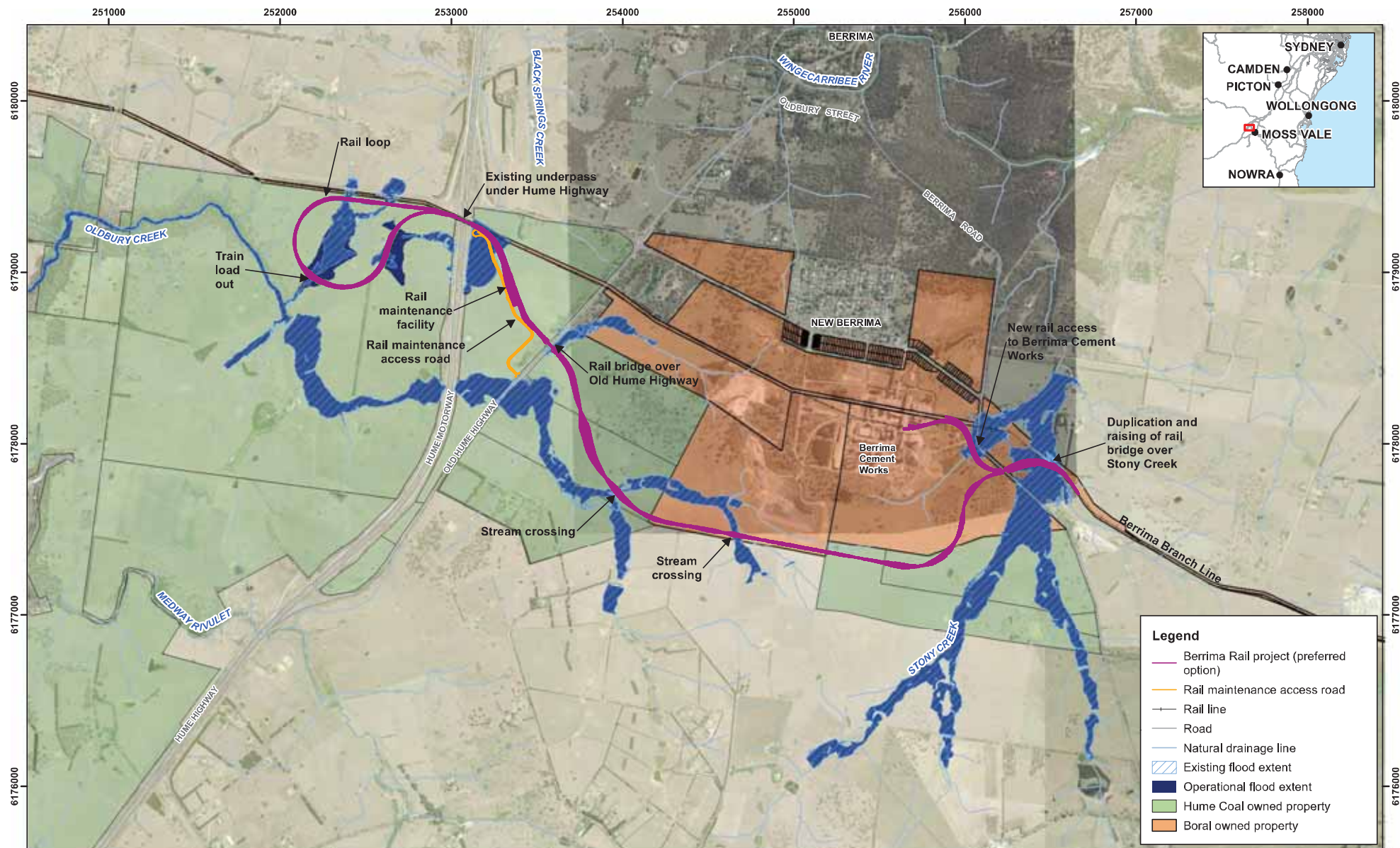
Hume Coal

## Berrima Rail Project Appendix C1

5 Year ARI flood extent - Operation (Preferred option)

www.wsp-ph.com





Map: 2200569A\_GIS\_012\_A7

Author: RP



0 250 500 m

Date: 15/11/2016

Approved by: LR

1:20,000

Data source: © Land and Property Information 2015, Hume Coal

Coordinate system: GDA 1994 MGA Zone 56

Scale ratio correct when printed at A3



Hume Coal

## Berrima Rail Project Appendix C2

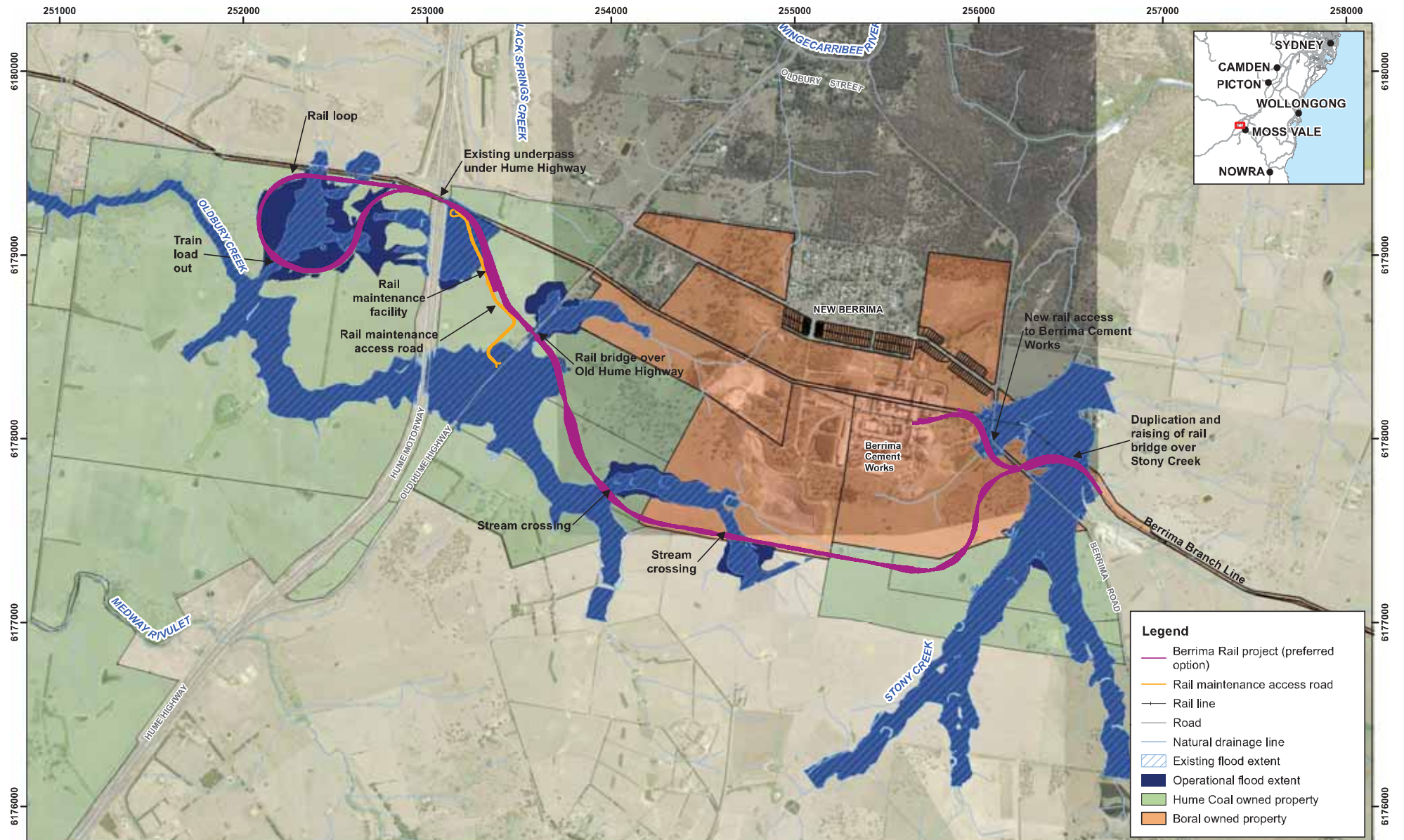
20 Year ARI flood extent - Operation (Preferred option)

© WSP | Parsons Brinckerhoff Asia Pacific (WSP|PB) Copyright in the drawings, information and data recorded is the property of WSP|PB. This document and the information are solely for the use of the authorised recipient and this document may not be used, copied or reproduced in whole or part for any purpose other than that which it was supplied by WSP|PB. WSP|PB makes no representation, undertaking, warranty and accepts no responsibility to any third party who may use or rely upon this document or the information. WSP|PB and Parsons Brinckerhoff are not responsible for any errors or omissions in this document or the information. WSP|PB and Parsons Brinckerhoff are not responsible for any errors or omissions in this document or the information.

WSP|PB\CD\Berrima\_Hume\_COAL\_TTY\_LTD\2200569A\_SURFACE\_WATER\_STUDY\BERRIMA\GIS\012\_A7.mxd

www.wsp-pb.com





Map: 2200569A\_GIS\_016\_A8

Author: RP



1:18,520

Date: 15/11/2016

Approved by: LR

Data source: © Land and Property Information 2015, Hume Coal

Coordinate system: GDA 1994 MGA Zone 56

Scale ratio correct when printed at A3



## Berrima Rail Project Appendix C3

PMF flood extent - Operation (Preferred option)

© WSP | Parsons Brinckerhoff Asia Pacific (WSP|PB) Copyright in the drawings, information and data recorded is the property of WSP|PB. This document and the information are solely for the use of the authorised recipient and this document may not be used, copied or reproduced in whole or part for any purpose other than that which it was supplied by WSP|PB. WSP|PB makes no representation, undertaking, warranty and accepts no responsibility to any third party who may use or rely upon this document or the information. WSP|PB and Parsons Brinckerhoff are not responsible for any errors or omissions in this document.

WSP|PB\Projects\HUME\_COAL\_TTY LTD\2200569A\_SURFACE\_WATER\_STUDY\BERRIMA\GIS\AppendixC3\Map2200569A\_GIS\_016\_A8.mxd

Hume Coal

www.wsp-ph.com

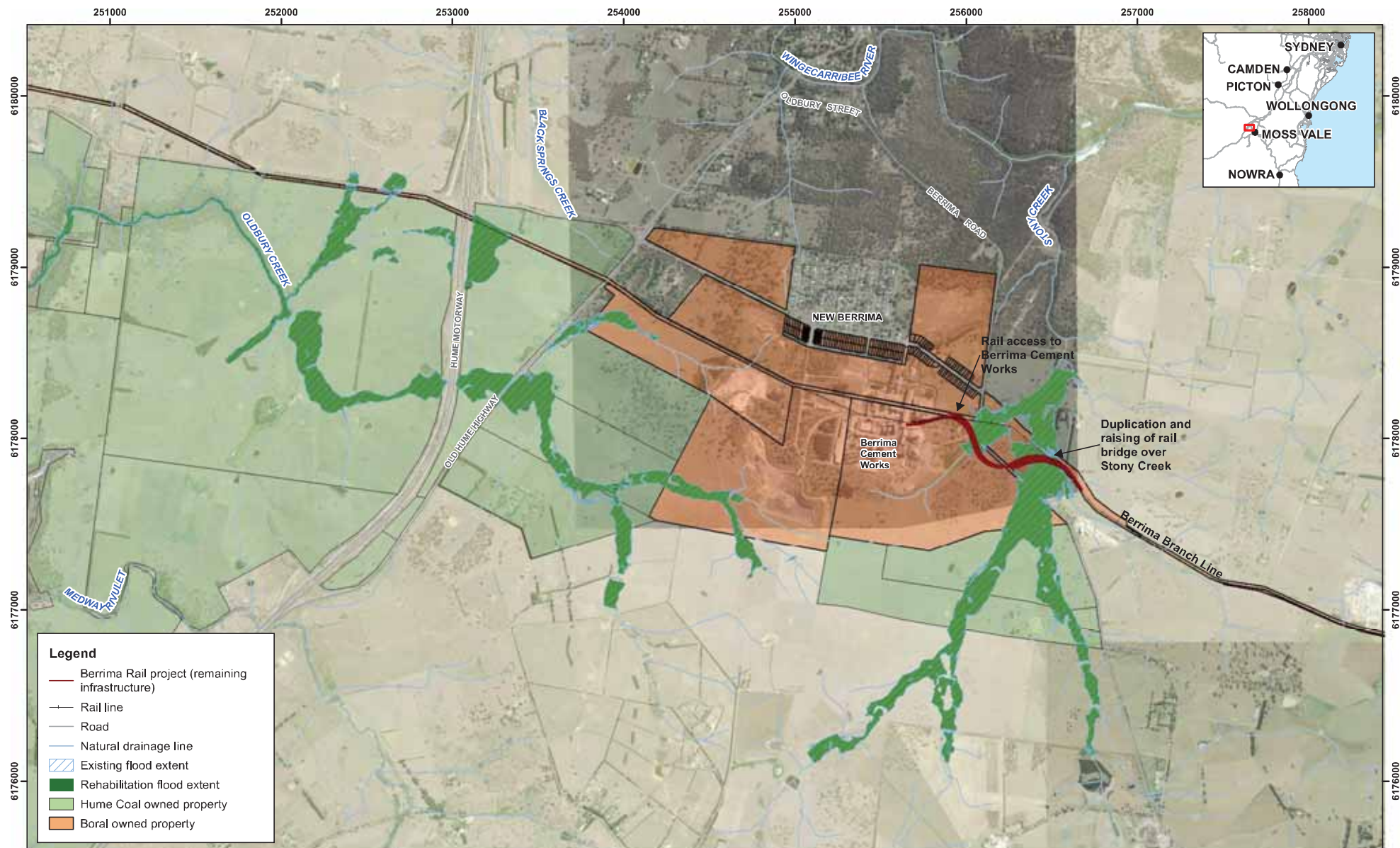
# Appendix D

**PREFERRED OPTION REHABILITATION FLOOD MAPS**









Map: 2200569A\_GIS\_013\_A7

Author: RP

Date: 15/11/2016

Approved by: LR

Data source: © Land and Property Information 2015, Hume Coal



1:20,000

Coordinate system: GDA 1994 MGA Zone 56

Scale ratio correct when printed at A3

© WSP | Parsons Brinckerhoff Asia Pacific (WSP|PB) Copyright in the drawings, information and data recorded is the property of WSP|PB. This document and the information are solely for the use of the authorised recipient and this document may not be used, copied or reproduced in whole or part for any purpose other than that which it was supplied by WSP|PB. WSP|PB makes no representation, undertaking or warranty and accepts no responsibility to any third party who may use or rely upon this document or the information. WSP|PB is a registered provider of professional services under the Professional Services Act 2004.

WSP|PB\DRG\HUME\_COAL\_TTY\_LTD\2200569A\_SURFACE\_WATER\_STUDY\_BERRIMA\06\_P\geos\Map2200569A\_GIS\_013\_A7.mxd



Hume Coal

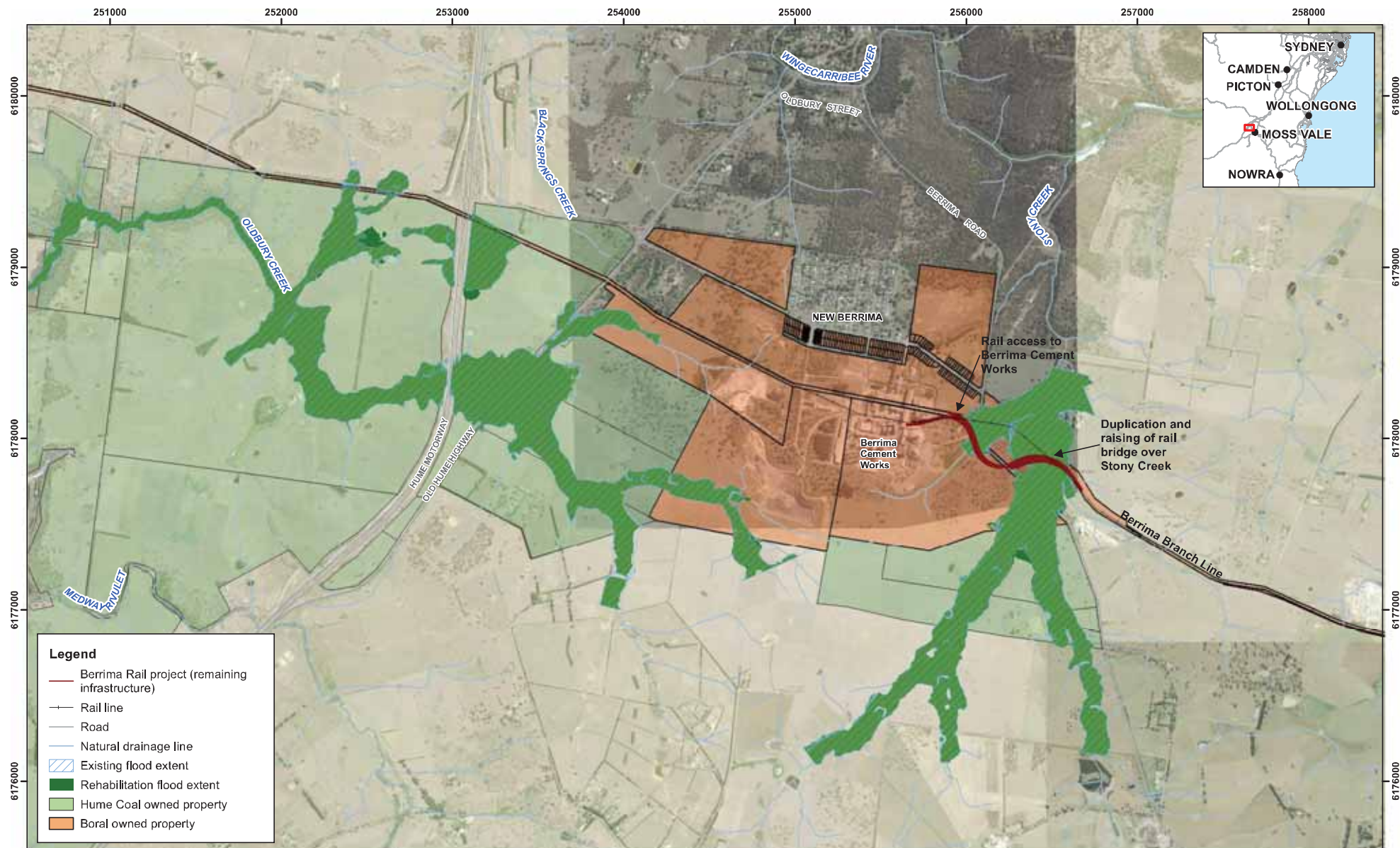
## Berrima Rail Project

### Appendix D2

20 Year ARI flood extent - Rehabilitation (Preferred option)

www.wsp-ph.com





Map: 2200569A\_GIS\_017\_A7

Author: RP



0 250 500 m

Date: 15/11/2016

Approved by: LR

1:20,000

Data source: © Land and Property Information 2015, Hume Coal

Coordinate system: GDA 1994 MGA Zone 56

Scale ratio correct when printed at A3



© WSP | Parsons Brinckerhoff Asia Pacific (WSP|PB) Copyright in the drawings, information and data recorded is the property of WSP|PB. This document and the information are solely for the use of the authorised recipient and this document may not be used, copied or reproduced in whole or part for any purpose other than that which it was supplied by WSP|PB. WSP|PB makes no representation, undertaking or warranty, and accepts no responsibility to any third party who may use or rely upon this document or the information recorded herein. WSP|PB makes no representation, undertaking or warranty, and accepts no responsibility to any third party who may use or rely upon this document or the information recorded herein.

WSP|PB\GIS\Hume\_Coal\_TY\_LTD\2016\Hume\_Surface\_Water\_Study\_Berrima\GIS\Map2200569A\_GIS\_017\_A7.mxd

Hume Coal

**Berrima Rail Project**

Appendix D3

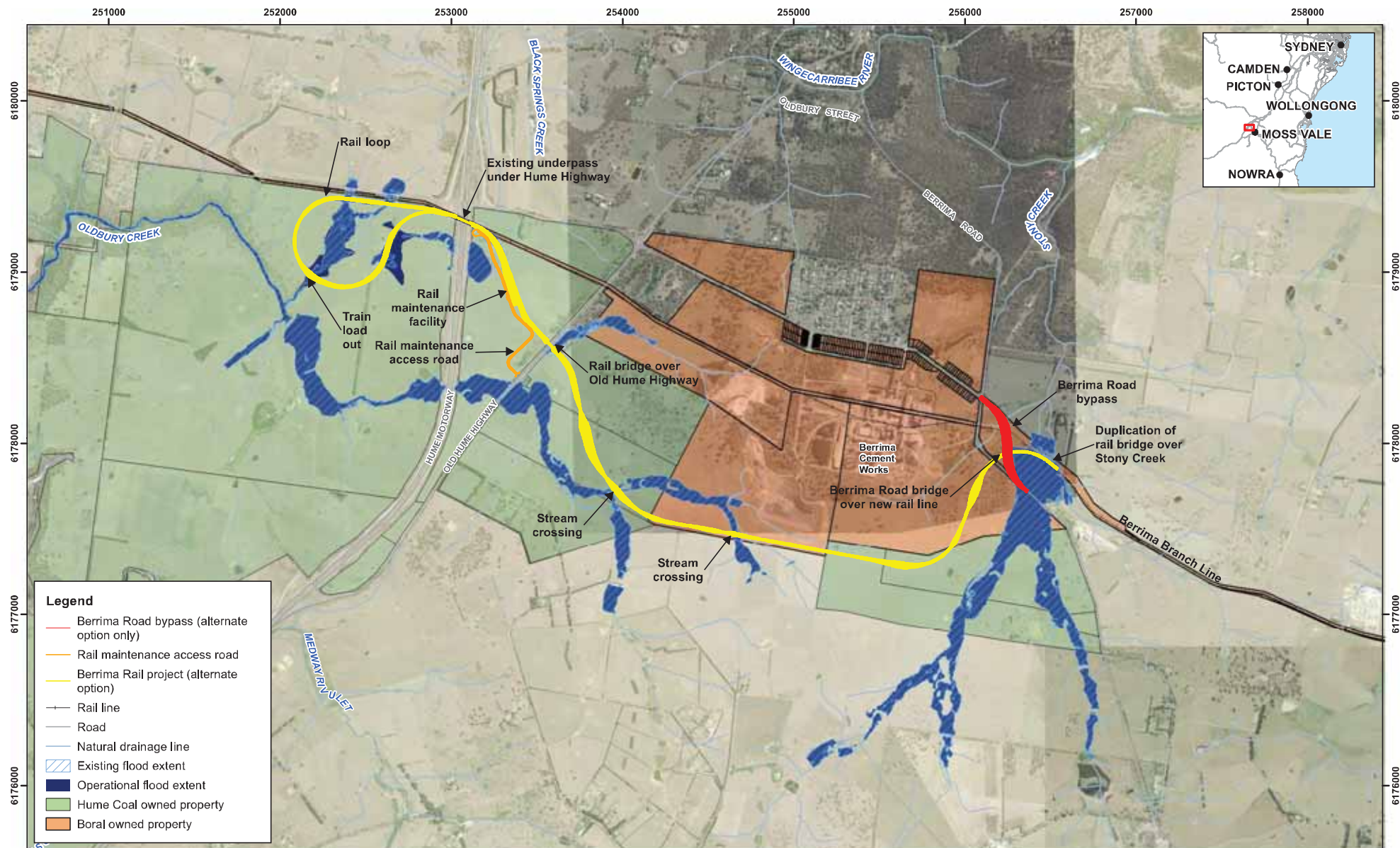
PMF flood extent - Rehabilitation (Preferred option)

www.wsp-ph.com



# Appendix E

**ALTERNATE OPTION FLOOD MAPS**



Map: 2200569A\_GIS\_002\_A7  
 Date: 15/11/2016

Author: RP  
 Approved by: LR



0 250 500 m  
 1:20,000  
 Coordinate system: GDA 1994 MGA Zone 56  
 Scale ratio correct when printed at A3

Data source: © Land and Property Information 2015, Hume Coal

© WSP | Parsons Brinckerhoff Asia Pacific (WSP|PB) Copyright in the drawings, information and data recorded is the property of WSP|PB. This document and the information are solely for the use of the authorised recipient and this document may not be used, copied or reproduced in whole or part for any purpose other than that which it was supplied by WSP|PB. WSP|PB makes no representation, undertaking or warranty and accepts no responsibility to any third party who may use or rely upon this document or the information. WSP|PB is not responsible for any and all errors or omissions in this document.

WSP|PB\DL\Group\HUME\_COAL\_TTY\_LTD\2200569A\_SURFACE\_WATER\_STUDY\_BERRIMA\GIS\002\Map2200569A\_GIS\_002\_A7.mxd

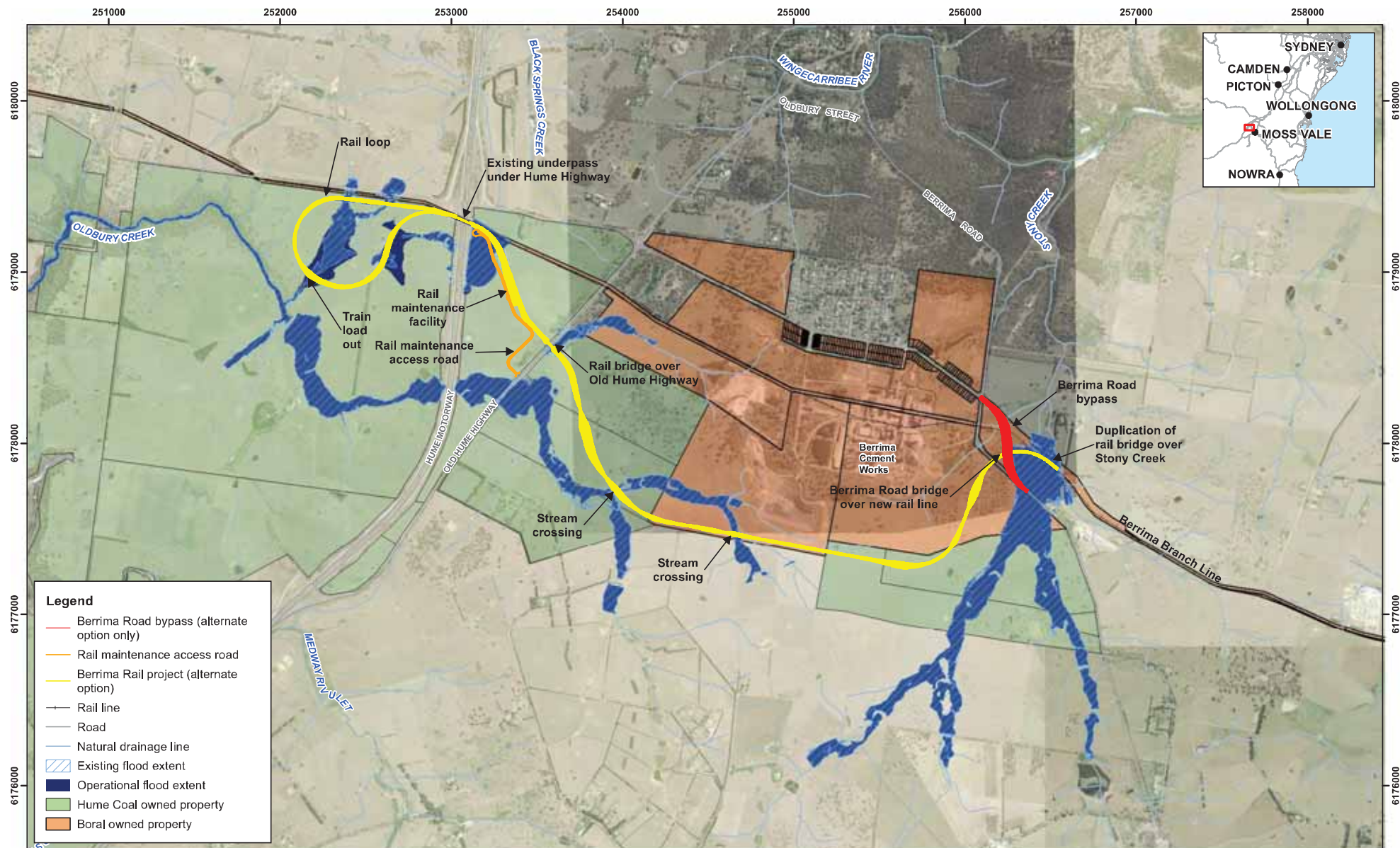


Hume Coal

# **Berrima Rail Project** Appendix E1 5 year ARI flood extent - Operation (Alternate option)

www.wsp-ph.com





Map: 2200569A\_GIS\_004\_A7

Author: RP

Date: 15/11/2016

Approved by: LR

Data source: © Land and Property Information 2015, Hume Coal



1:20,000

Coordinate system: GDA 1994 MGA Zone 56

Scale ratio correct when printed at A3

© WSP | Parsons Brinckerhoff Asia Pacific (WSP|PB) Copyright in the drawings, information and data recorded is the property of WSP|PB. This document and the information are solely for the use of the authorized recipient and this document may not be used, copied or reproduced in whole or part for any purpose other than that which it was supplied by WSP|PB. WSP|PB makes no representation, undertaking or warranty and accepts no responsibility to any third party who may use or rely upon this document or the information. WSP|PB is not responsible for any loss or damage caused by the use of this document or the information.



Hume Coal

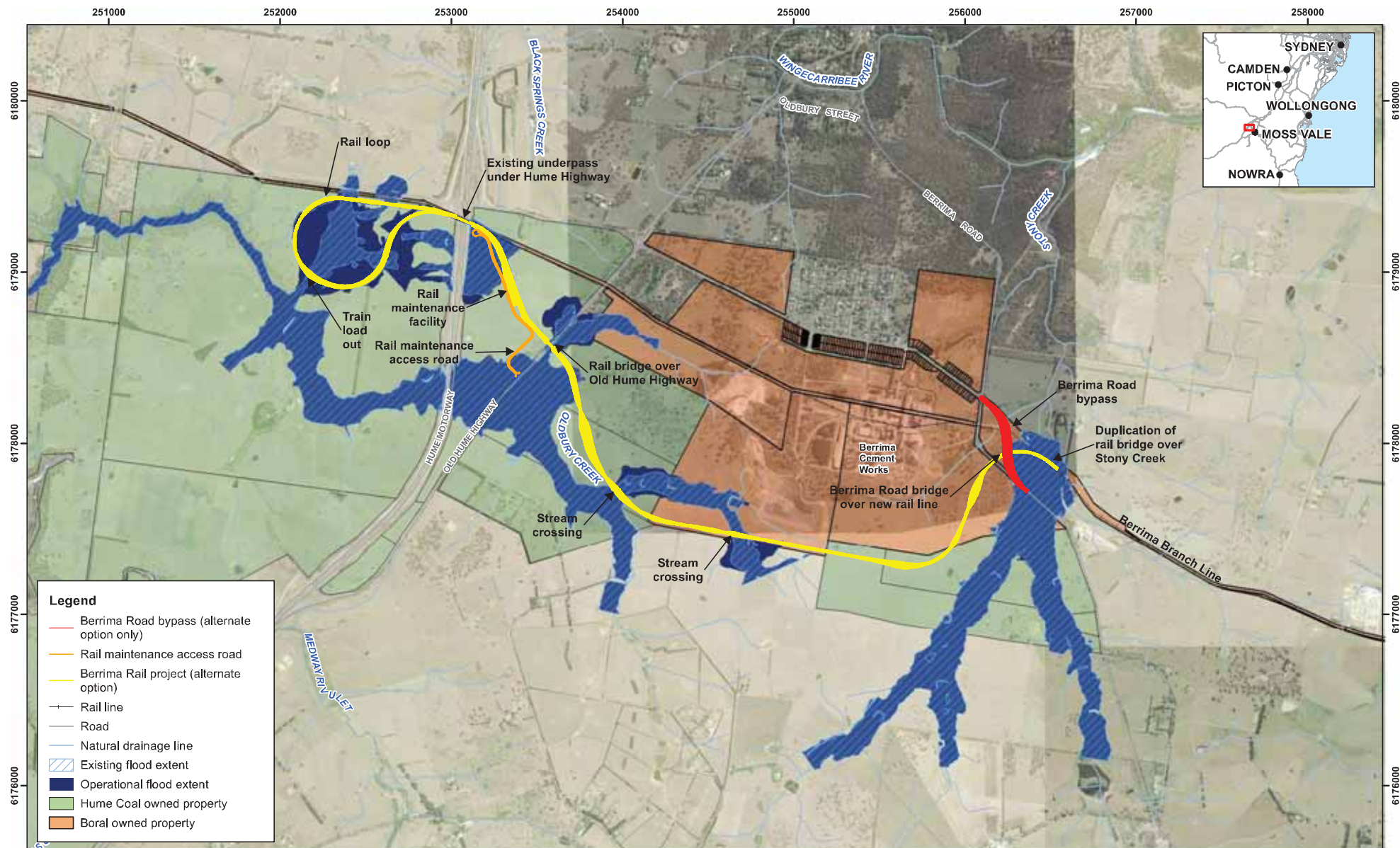
**Berrima Rail Project**

Appendix E2

20 year ARI flood extent - Operation (alternate option)

www.wsp-ph.com





Map: 2200569A\_GIS\_008\_A6

Author: RP

Date: 15/11/2016

Approved by: LR

Data source: © Land and Property Information 2015, Hume Coal

1:20,000

Coordinate system: GDA 1994 MGA Zone 56

Scale ratio correct when printed at A3

© WSP | Parsons Brinckerhoff Asia Pacific (WSP|PB) Copyright in the drawings, information and data recorded is the property of WSP|PB. This document and the information are solely for the use of the authorised recipient and this document may not be used, copied or reproduced in whole or part for any purpose other than that which it was supplied by WSP|PB. WSP|PB makes no representation, undertaking or warranty, and accepts no responsibility to any third party who may use or rely upon this document or the information recorded herein. WSP|PB makes no representation, undertaking or warranty, and accepts no responsibility to any third party who may use or rely upon this document or the information recorded herein.

WSP|PB\CD\Hume\_Coal\_TTY\_LTD\2200569A\_SURFACE\_WATER\_STUDY\BERRIMA\GIS\Map2200569A\_GIS\_008\_A6.mxd

Hume Coal



## Berrima Rail Project

### Appendix E3

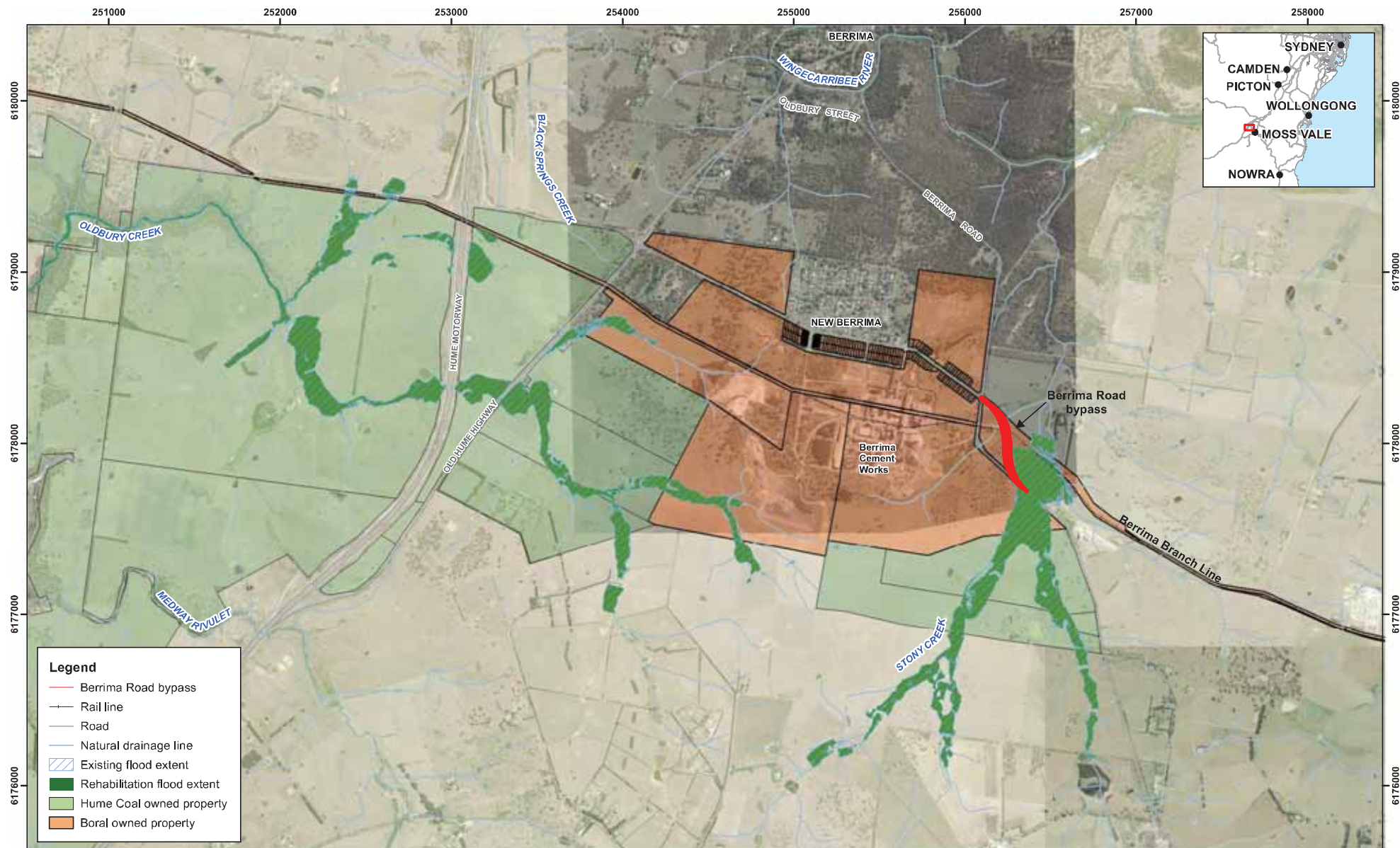
PMF flood extent - Operation (Alternate option)

www.wsp-pb.com



# Appendix F

**ALTERNATE OPTION REHABILITATION FLOOD MAPS**



Map: 2200569A\_GIS\_003\_A7

Author: RP



0 250 500 m

Date: 15/11/2016

Approved by: - LR

1:20,000

Data source: © Land and Property Information 2015, Hume Coal

Coordinate system: GDA 1994 MGA Zone 56

Scale ratio correct when printed at A3



## Berrima Rail Project

### Appendix F1

#### 5 year ARI flood extent - Rehabilitation (Alternate option)

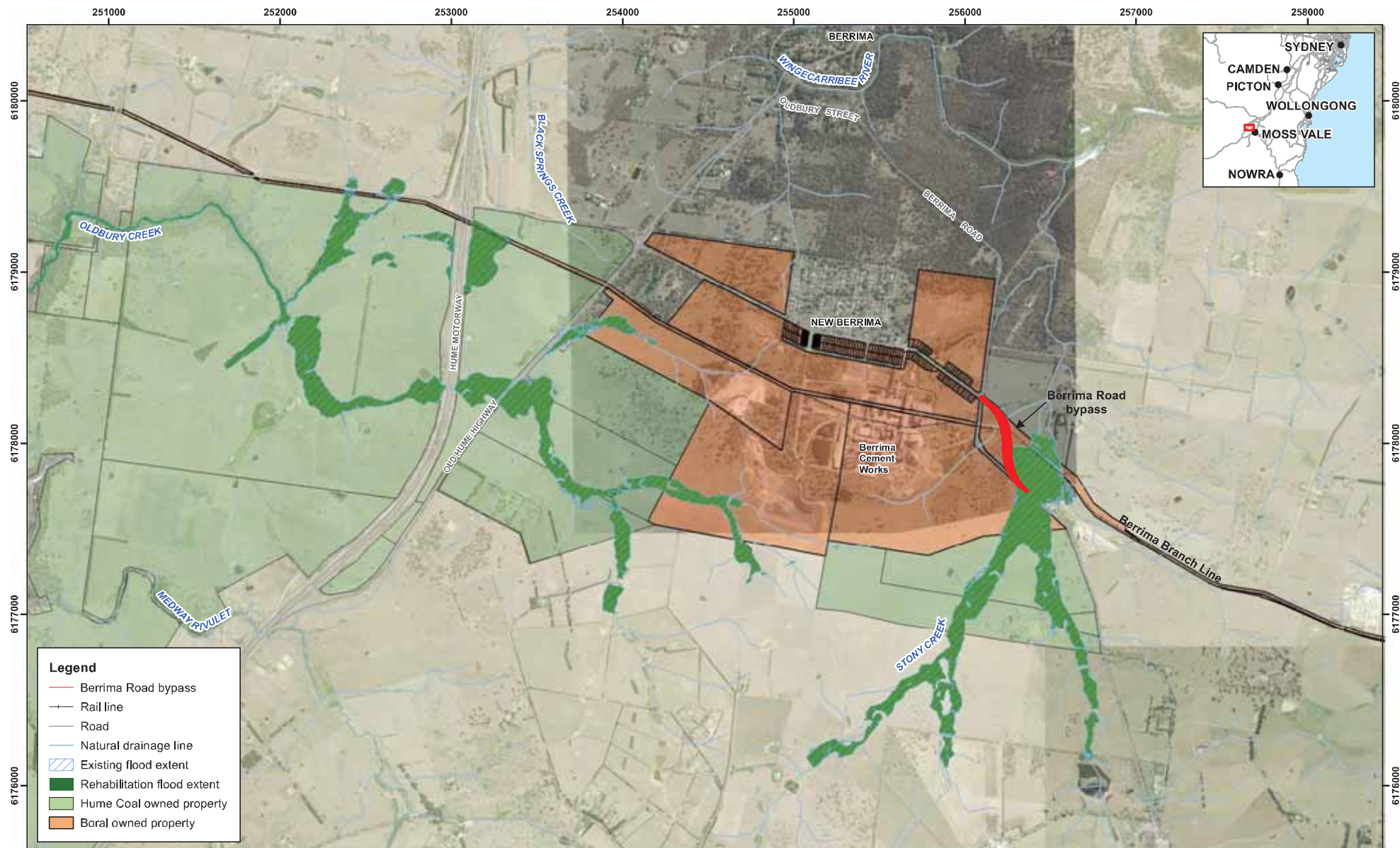
© WSP | Parsons Brinckerhoff Asia Pacific (WSP|PB) Copyright in the drawings, information and data recorded is the property of WSP|PB. This document and the information are solely for the use of the authorised recipient and this document may not be used, copied or reproduced in whole or part for any purpose other than that which it was supplied by WSP|PB. WSP|PB makes no representation, undertaking, warranty and accepts no responsibility to any third party who may use or rely upon this document or the information. WSP|PB is not responsible for any errors or omissions. WSP|PB is not responsible for any errors or omissions. WSP|PB is not responsible for any errors or omissions. WSP|PB is not responsible for any errors or omissions.

WSP|PB\DRG\HUME\_COAL\_TTY\_LTD\2016\HUME\_COAL\_SURFACE\_WATER\_STUDY\_BERRIMA\04\Map2200569A\_GIS\_003\_A7.mxd

Hume Coal

www.wsp-ph.com





Map: 2200569A\_GIS\_005\_A6

Author: RP



0 250 500 m

Date: 15/11/2016

Approved by: -LR

1:20,000

Data source: © Land and Property Information 2015, Hume Coal

Coordinate system: GDA 1994 MGA Zone 56

Scale ratio correct when printed at A3



## Berrima Rail Project

### Appendix F2

#### 20 year ARI flood extent - Rehabilitation (Alternate option)

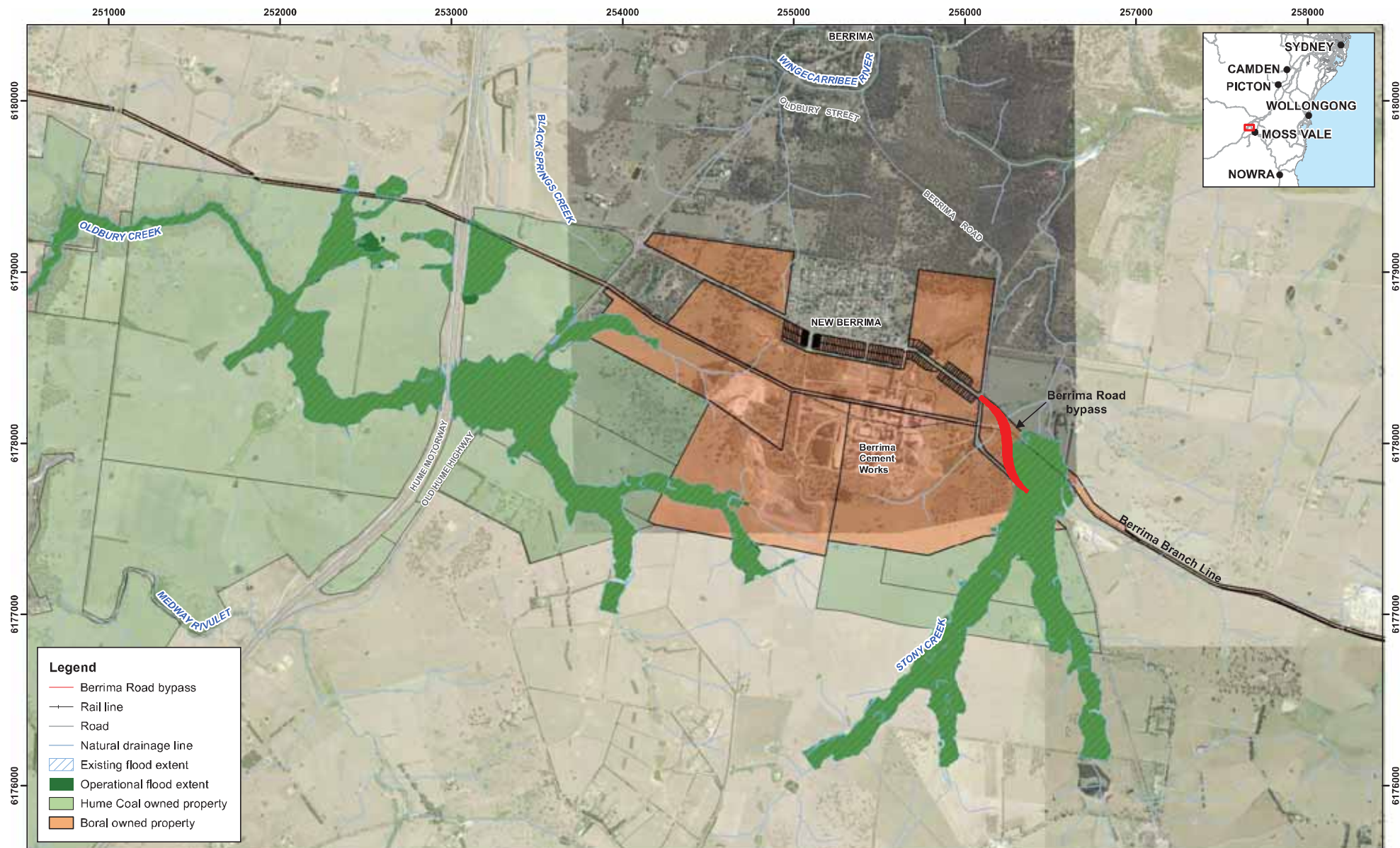
© WSP | Parsons Brinckerhoff Asia Pacific (WSP|PB) Copyright in the drawings, information and data recorded is the property of WSP|PB. This document and the information are solely for the use of the authorised recipient and this document may not be used, copied or reproduced in whole or part for any purpose other than that which it was supplied by WSP|PB. WSP|PB makes no representation, undertaking no duty and accepts no responsibility to any third party who may use or rely upon this document or the information. WSP|PB Certified Quality System to ISO 9001. SHAPROVED FOR AND ON BEHALF OF WSP|PB Parsons Brinckerhoff Asia Pacific.

WSP|PB\CD\Hume\_COAL\_TTY\_LTD\2200569A\_SURFACE\_WATER\_STUDY\_BERRIMA\040P\genMap2200569A\_GIS\_005\_A6.mxd

Hume Coal

www.wsp-pb.com





Map: 2200569A_GIS_009_A6	Author: RP		
Date: 15/11/2016	Approved by: LR		
Data source: © Land and Property Information 2015, Hume Coal		Coordinate system: GDA 1994 MGA Zone 56 Scale ratio correct when printed at A3	

© WSP | Parsons Brinckerhoff Asia Pacific (WSP|PB) Copyright in the drawings, information and data recorded is the property of WSP|PB. This document and the information are solely for the use of the authorised recipient and this document may not be used, copied or reproduced in whole or part for any purpose other than that which it was supplied by WSP|PB. WSP|PB makes no representation, undertaking or warranty as to the accuracy or completeness of any data or information provided by any third party who may use or rely upon this document or the information. WSP|PB and its subsidiaries, including WSP|PB, are not responsible for any loss or damage suffered by any third party who may use or rely upon this document or the information. WSP|PB and its subsidiaries, including WSP|PB, are not responsible for any loss or damage suffered by any third party who may use or rely upon this document or the information.

WSP|PB\DRG\HUME\_COAL\_TTY\_LTD\2200569A\_SURFACE\_WATER\_STUDY\_BERRIMA\040P\genMap2200569A\_GIS\_009\_A6.mxd



Hume Coal

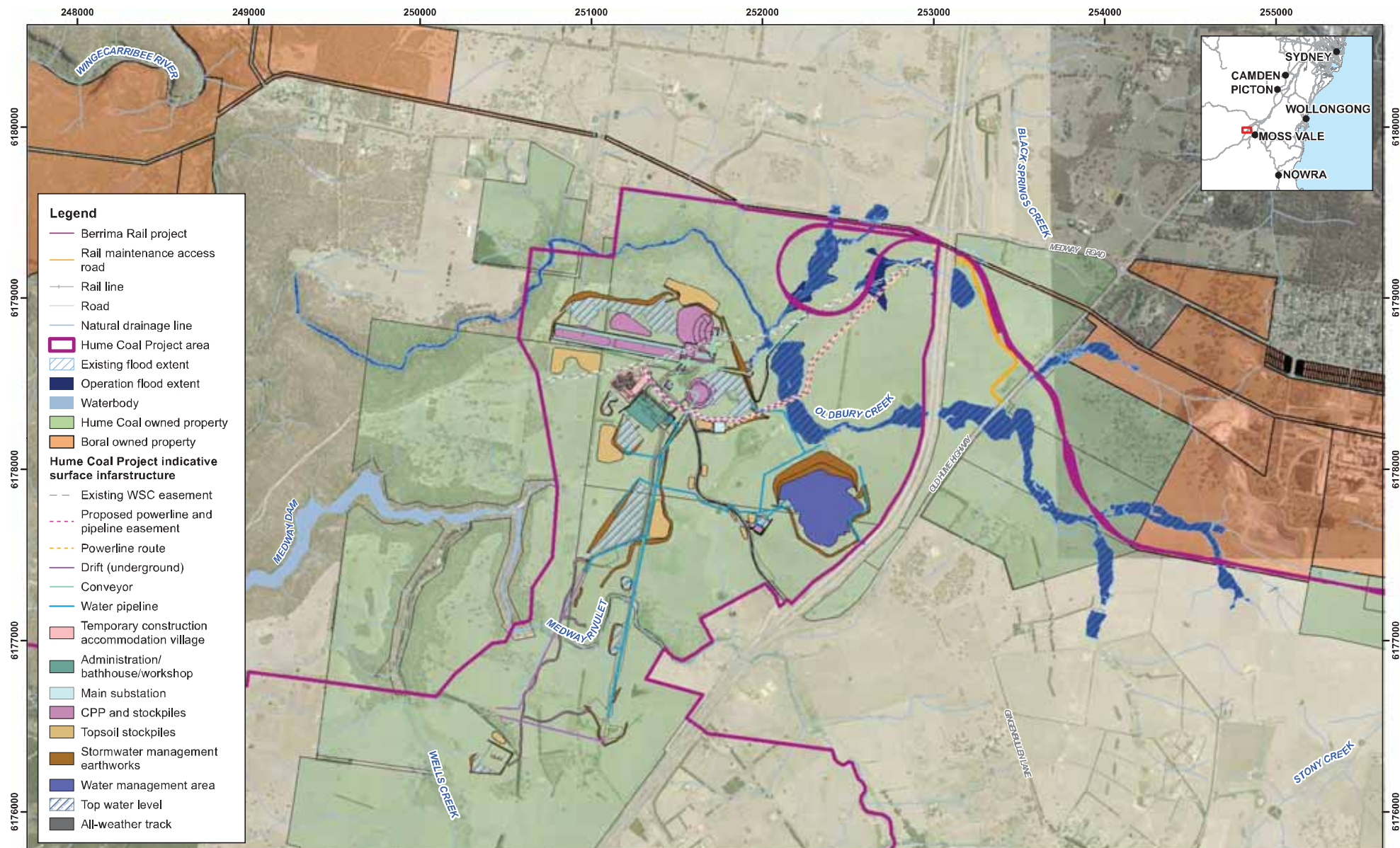
**Berrima Rail Project**  
Appendix F3  
PMF flood extent - Rehabilitation (Alternate option)

[www.wsp-pb.com](http://www.wsp-pb.com)



# Appendix G

**CUMULATIVE FLOOD MAPS**



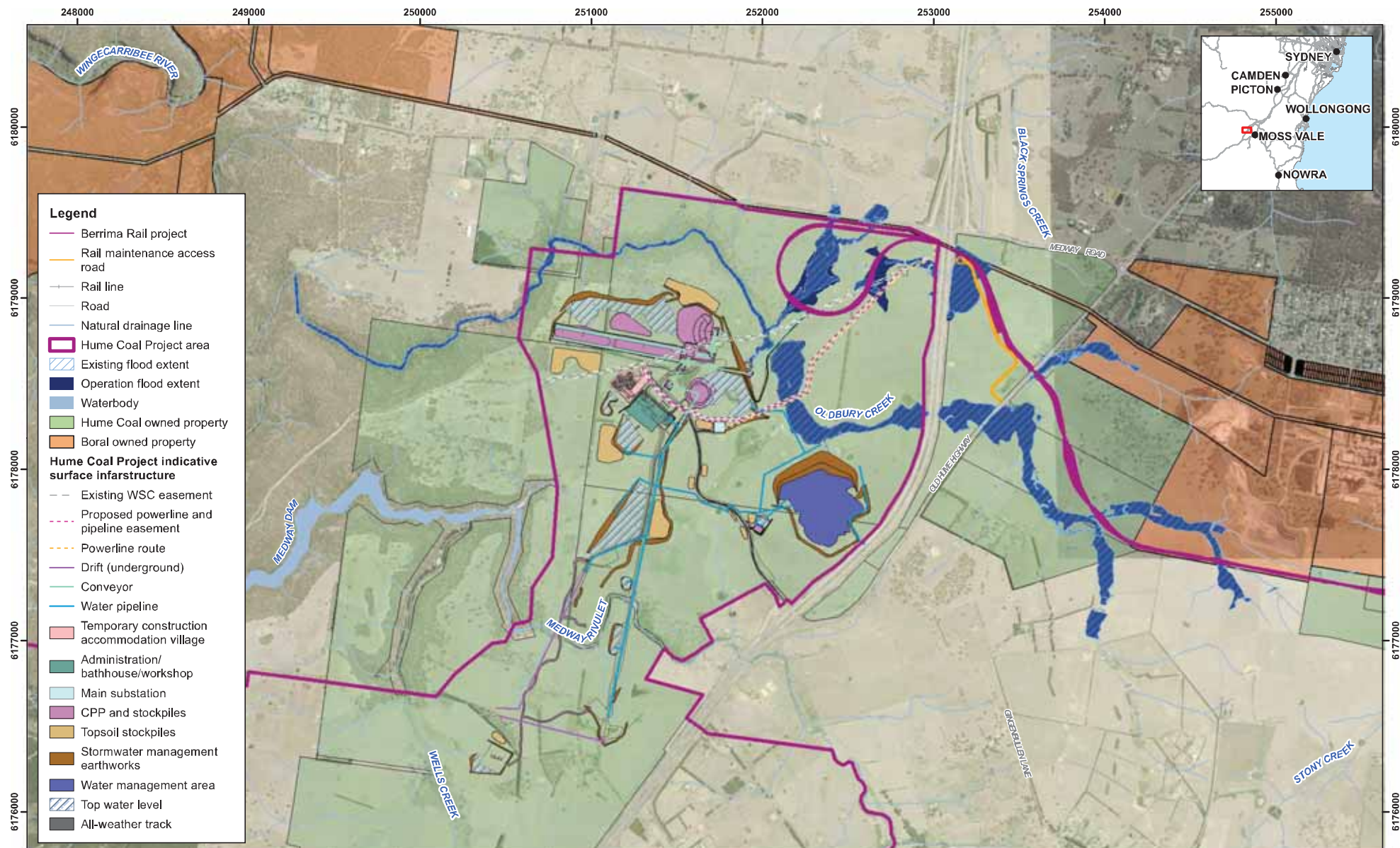
**Berrima Rail Project**  
**Appendix G1**  
**Cumulative 5 Year ARI flood extent - Operation**



Hume Coal

www.wsp-ph.com





**Berrima Rail Project**  
**Appendix G2**  
**Cumulative 20 Year ARI flood extent - Operation**

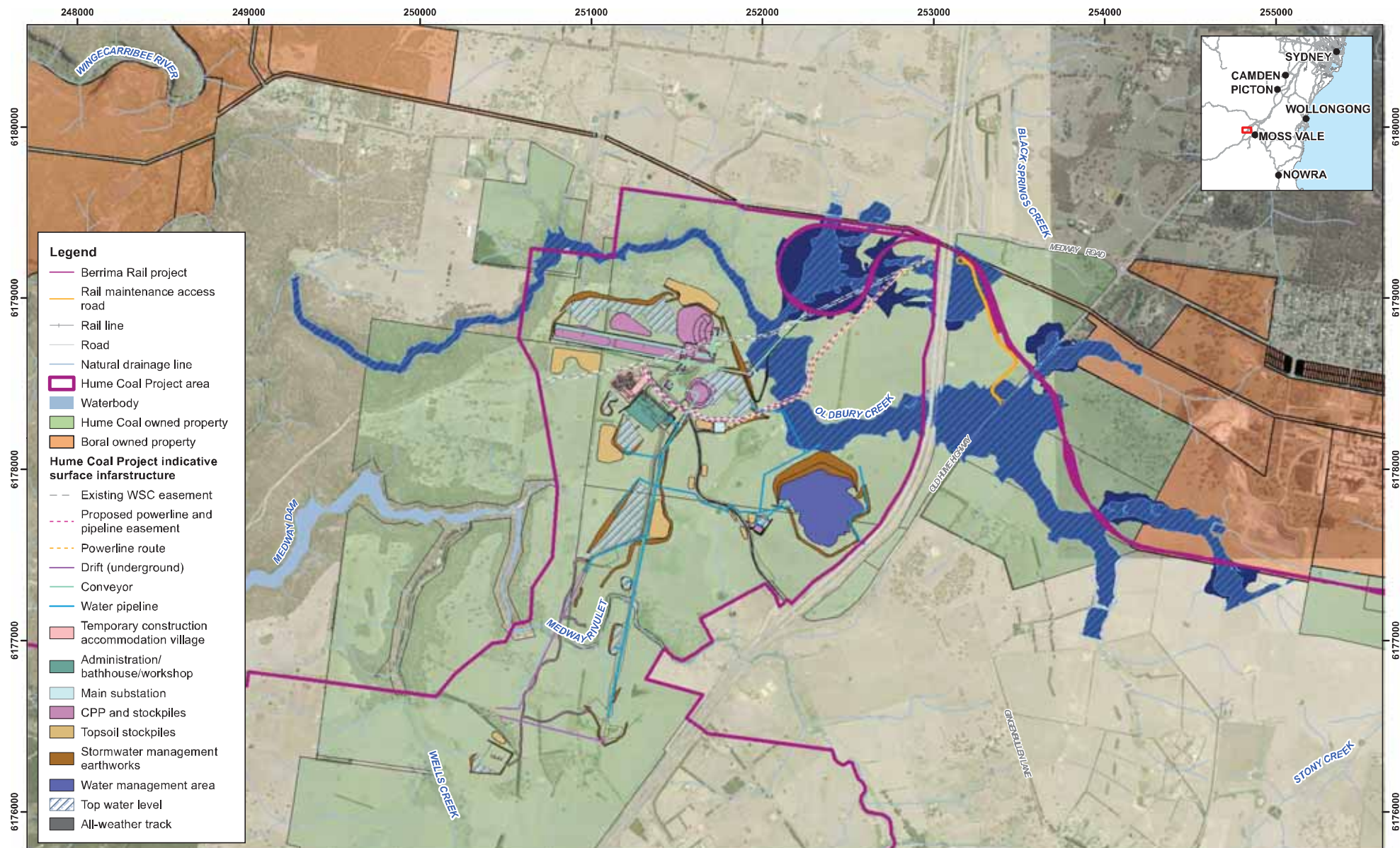
© WSP | Parsons Brinckerhoff Asia Pacific (WSP|PB) Copyright in the drawings, information and data recorded is the property of WSP|PB. This document and the information are solely for the use of the authorised recipient and this document may not be used, copied or reproduced in whole or part for any purpose other than that which it was supplied by WSP|PB. WSP|PB makes no representation, undertaking or warranty, and accepts no responsibility for any third party who may use or rely upon this document or the information recorded herein without the prior written approval of WSP|PB.

WSP|PB\DL\Group\HUME\_COAL\_TTY\_LTD\2200569A\_HUME\_SURFACE\_WATER\_EB10\_G2\Project\Map\2200569A\_G2\_031\_A6.mxd

Hume Coal

www.wsp-ph.com





Map: 2200569A\_GIS\_033\_A6

Author: RP

Date: 15/11/2016

Approved by: LR



0 200 400  
m

1:20,000

Coordinate system: GDA 1994 MGA Zone 56

Scale ratio correct when printed at A3

Data source: © Land and Property Information 2015, Hume Coal

© WSP | Parsons Brinckerhoff Asia Pacific (WSP|PB) Copyright in the drawings, information and data recorded is the property of WSP|PB. This document and the information are solely for the use of the authorised recipient and this document may not be used, copied or reproduced in whole or part for any purpose other than that which it was supplied by WSP|PB. WSP|PB makes no representation, undertaking or warranty and accepts no responsibility for any loss or damage suffered by any person who uses or relies upon this document or the information recorded herein without the prior written consent of WSP|PB.

WSP|PB\DL\Group\HUME\_COAL\_TTY\_LTD\2200569A\_HUME\_SURFACE\_WATER\_EIS\10\_GB\Project\map\2200569A\_GIS\_033\_A6.mxd



Hume Coal

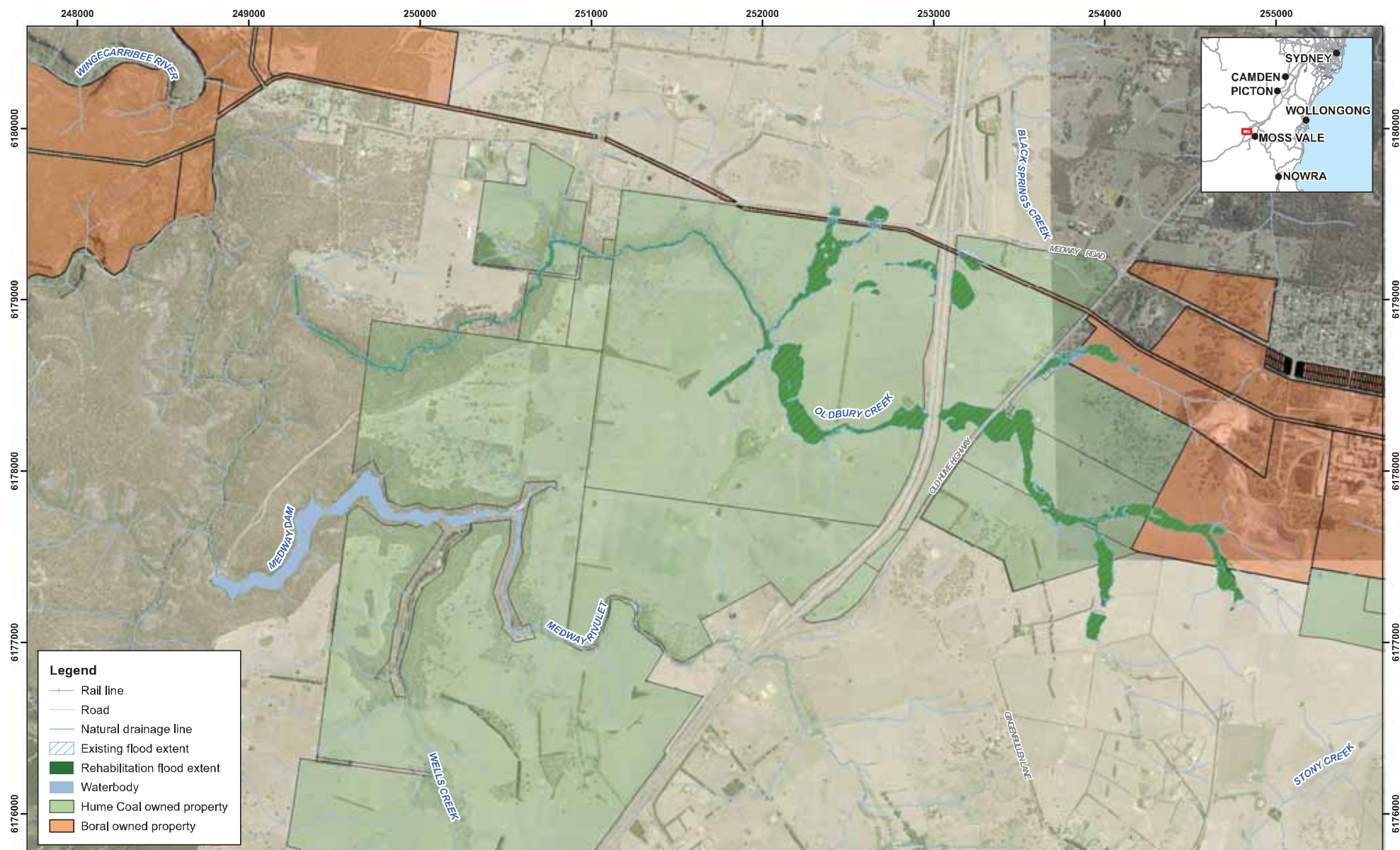
**Berrima Rail Project**  
Appendix G3  
Cumulative PMF flood extent - Operation

www.wsp-ph.com



# Appendix H

**CUMULATIVE REHABILITATION FLOOD MAPS**



Map: 2200569A\_GIS\_030\_A6  
 Date: 15/11/2016  
 Data source: © Land and Property Information 2015, Hume Coal

Author: RP  
 Approved by: LR



0 200 400  
 m

1:20,000

Coordinate system: GDA 1994 MGA Zone 56

Scale ratio correct when printed at A3



© WSP | Parsons Brinckerhoff Asia Pacific (PAB) Copyright in the drawings, information and data recorded is the property of WSP/PB. This document and the information are solely for the use of the authorised recipient and this document may not be used, copied or reproduced in whole or part for any purpose other than that which it was supplied by WSP/PB. WSP/PB makes no representation, undertaking, warranty and accepts no responsibility to any third party who may use or rely upon this document or the information recorded herein without the prior written approval of WSP/PB. WSP/PB makes no representation, undertaking, warranty and accepts no responsibility to any third party who may use or rely upon this document or the information recorded herein without the prior written approval of WSP/PB.

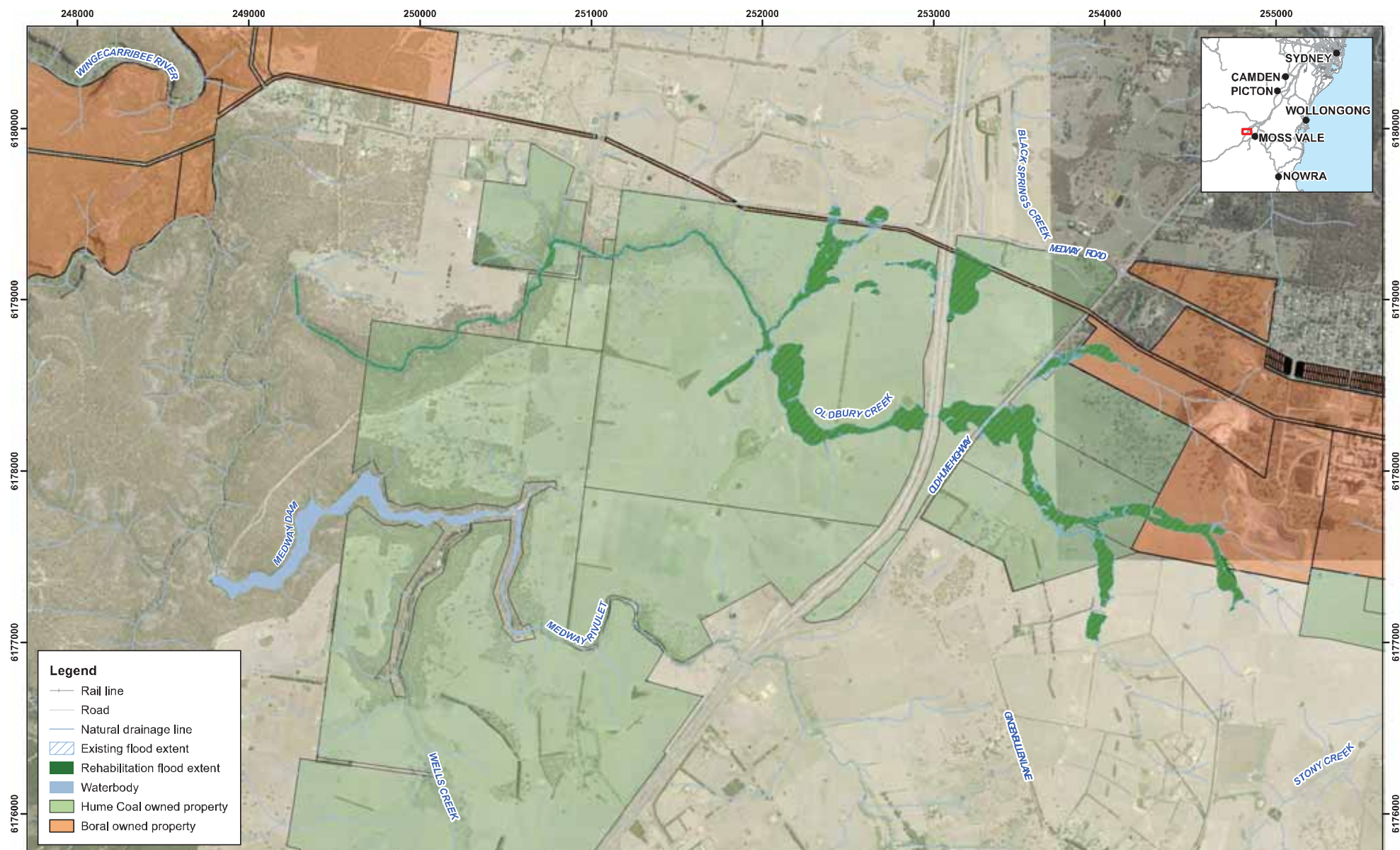
WSP/PB/CD/2015/HUME\_COAL\_TTY\_LTD/2200569A\_HUME\_SURFACE\_WATER\_EIS/10\_CD/Project/Map/2200569A\_GIS\_030\_A6.mxd

Hume Coal

**Berrima Rail Project**  
 Appendix H1  
 Cumulative 5 year ARI flood extent - Rehabilitation

www.wsp-ph.com





Map: 2200569A\_GIS\_032\_A6

Author: RP



0 200 400  
m

Date: 15/11/2016

Approved by: LR

1:20,000

Data source: © Land and Property Information 2015, Hume Coal

Coordinate system: GDA 1994 MGA Zone 56

Scale ratio correct when printed at A3



© WSP | Parsons Brinckerhoff Asia Pacific (PAB) Copyright in the drawings, information and data recorded is the property of WSP/PB. This document and the information are solely for the use of the authorised recipient and this document may not be used, copied or reproduced in whole or part for any purpose other than that which it was supplied by WSP/PB. WSP/PB makes no representation, undertaking, warranty and accepts no responsibility to any third party who may use or rely upon this document or the information recorded herein. WSP/PB is not responsible for any loss or damage caused by the use of this document or the information recorded herein.

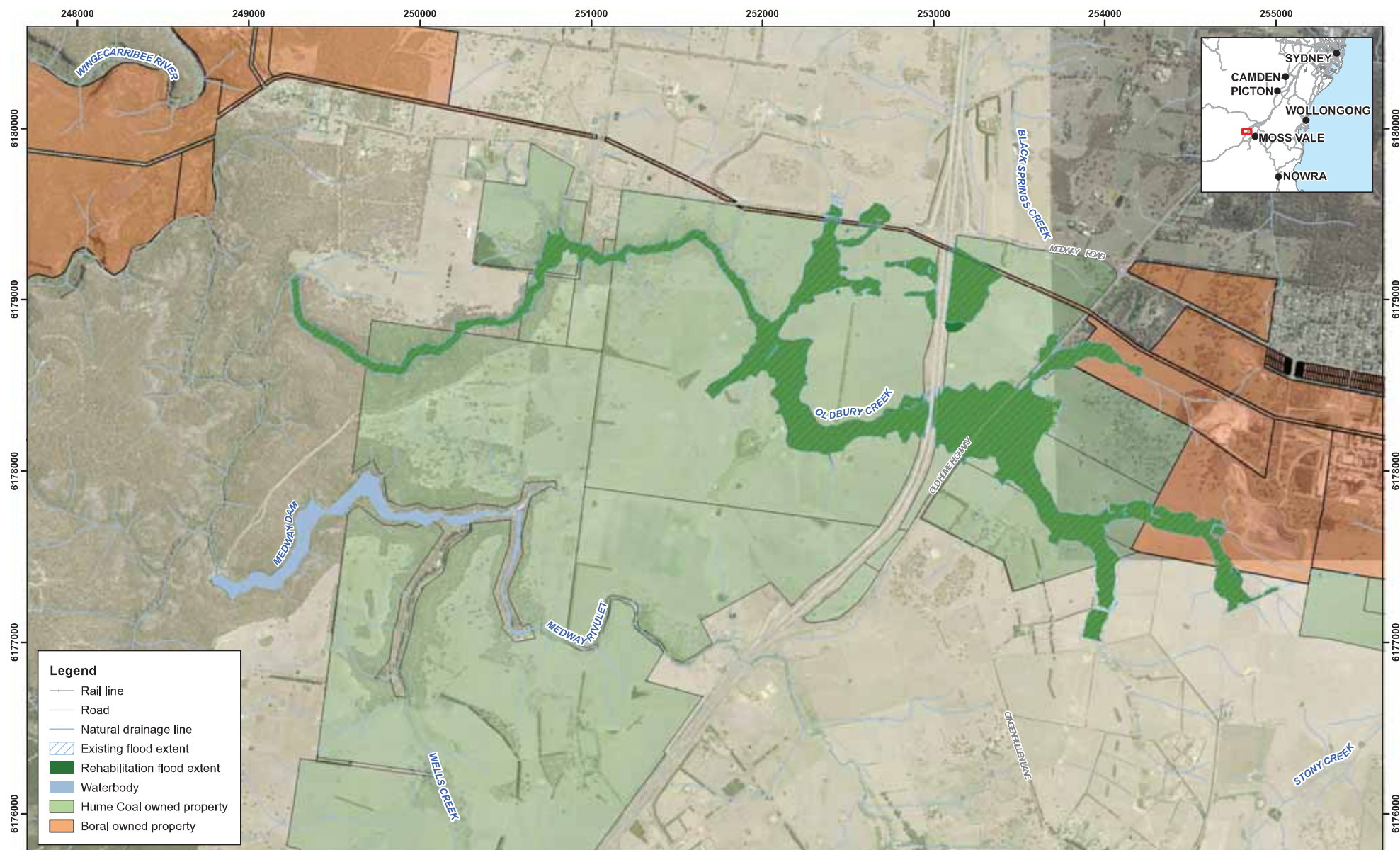
WSP/PB/CLD/2016/HUME\_COAL\_2TY\_LTD/2200569A\_HUME\_SURFACE\_WATER\_EIS/10\_OB/Project/Map/2200569A\_GIS\_032\_A6/Rehab

Hume Coal

**Berrima Rail Project**  
Appendix H2  
Cumulative 20 year ARI flood extent - Rehabilitation

www.wsp-ph.com





Map: 2200569A\_GIS\_034\_A6

Author: RP



0 200 400 m

Date: 15/11/2016

Approved by: LR

1:20,000

Data source: © Land and Property Information 2015, Hume Coal

Coordinate system: GDA 1994 MGA Zone 56

Scale ratio correct when printed at A3



© WSP | Parsons Brinckerhoff Asia Pacific (WSP|PB) Copyright in the drawings, information and data recorded is the property of WSP|PB. This document and the information are solely for the use of the authorized recipient and this document may not be used, copied or reproduced in whole or part for any purpose other than that which it was supplied by WSP|PB. WSP|PB makes no representation, undertaking, warranty and accepts no responsibility to any third party who may use or rely upon this document or the information recorded herein without the written consent of WSP|PB. WSP|PB makes no representation, undertaking, warranty and accepts no responsibility to any third party who may use or rely upon this document or the information recorded herein without the written consent of WSP|PB.

WSP|PB\DRG\HUME\_COAL\_TTY\_LTD\2200569A\_HUME\_SURFACE\_WATER\_EIS\10\_GB\Project\Map\2200569A\_GIS\_034\_A6.mxd

Hume Coal

**Berrima Rail Project**  
Appendix H3  
Cumulative PMF flood extent - Rehabilitation

[www.wsp-ph.com](http://www.wsp-ph.com)



# Appendix I

**ADJUSTMENT OF NUTRIENT BACKGROUND CONCENTRATIONS IN  
SWALES**

A key input parameter in MUSIC treatment nodes is the background pollutant levels, C\* (stormflow background pollutant concentration) and C\*\* (baseflow background pollutant levels) values. The default MUSIC background concentrations for TP and TN in swales are set high and are required to be revised to simulate more realistic values.

The C\* estimate for total suspended solids (TSS) is obtained by Fletcher (2004) from the particle size at which only 20% removal is achieved. The method and particle distribution figures are provided in Fletcher (2004).

Applying the Fletcher (2004) methodology for TP results in a C\* value of 0.18mg/L and an EMC of 0.26mg/L. This is significantly higher than the TP EMC recorded in the Hume Coal project baseline water quality data at 0.14mg/L. Therefore, it was considered reasonable to adjust the C\* and C\*\* values to reflect the lower recorded TP concentrations in the watercourses in the project area.

The C\* was adjusted by identifying the ratio between the C\* and the EMC identified in Fletcher (2004) and the EMC from the project area in the equation below.

$$C_{new}^* = EMC_{from\ baseline\ data} * \frac{C_{fletcher}^*}{EMC_{fletcher}}$$

MUSIC applies the same value for both C\* and C\*\* for swales. Therefore, the C\*<sub>new</sub> value was applied for both C\* and C\*\*.

The same method was applied for TN and the revised C\* and C\*\* for swales for both TP and TN are shown in the table below.

**Table 1: Revised C\* and C\*\* values for swales**

	k	C*	C**
TSS	8000	20	14
TP	6000	0.096^	0.096^
TN	500	0.89^	0.89^

^C\* and C\*\* values that were revised

By adjusting the C\* it is assumed that the background concentration of the swales will not increase because the swales will be properly maintained.



# Appendix J

**MUSIC MODELLING OUTPUT – CUMULATIVE FREQUENCY PLOTS**

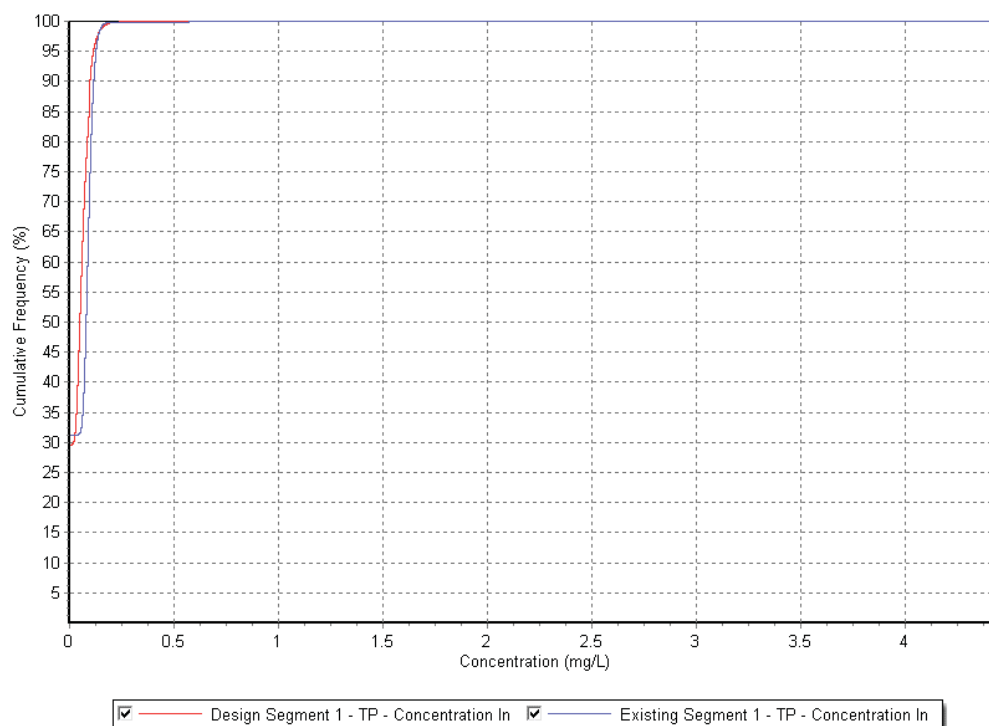


Figure J1: Cumulative Frequency Plots of TP for pre development (existing) and post development (operation) with treatment for Segment 1 of Oldbury Creek preferred and alternate options

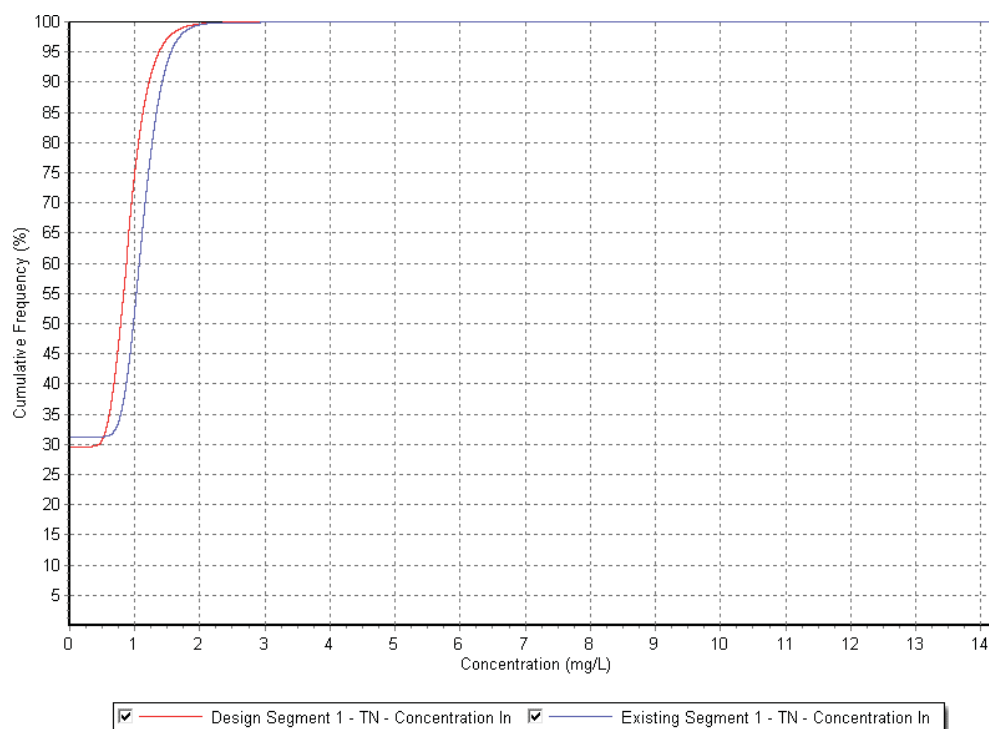


Figure J2: Cumulative Frequency Plots of TN for pre development (existing) and post development (operation) with treatment for Segment 1 of Oldbury Creek preferred and alternate options



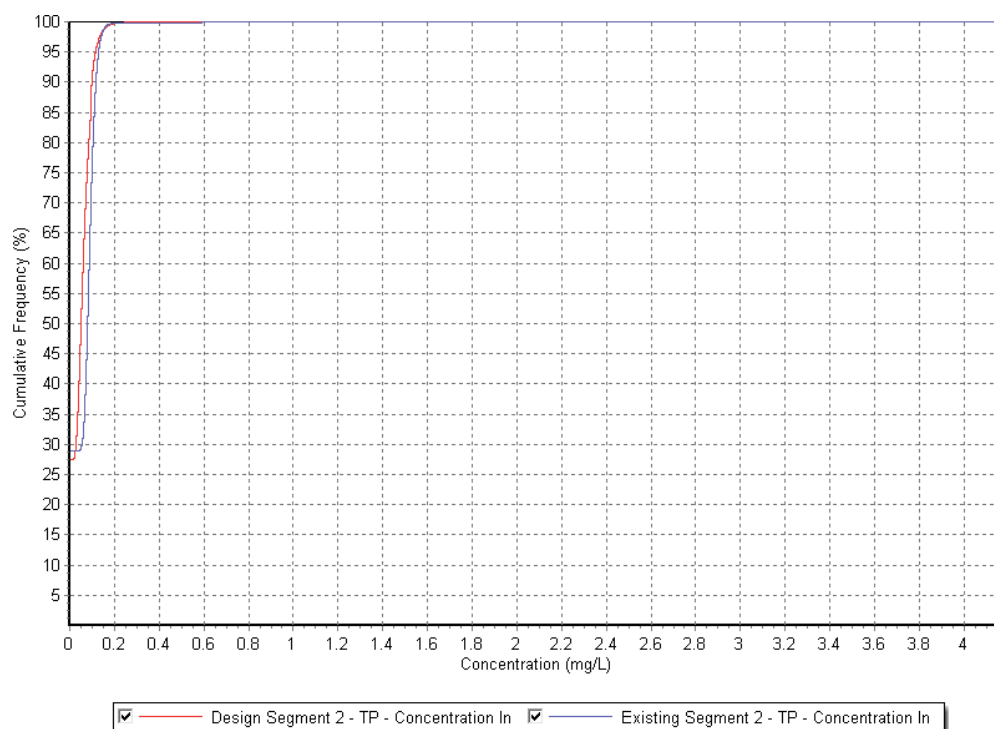


Figure J3: Cumulative Frequency Plots of TP for pre development (existing) and post development (operation) with treatment for Segment 2 of Oldbury Creek preferred and alternate options

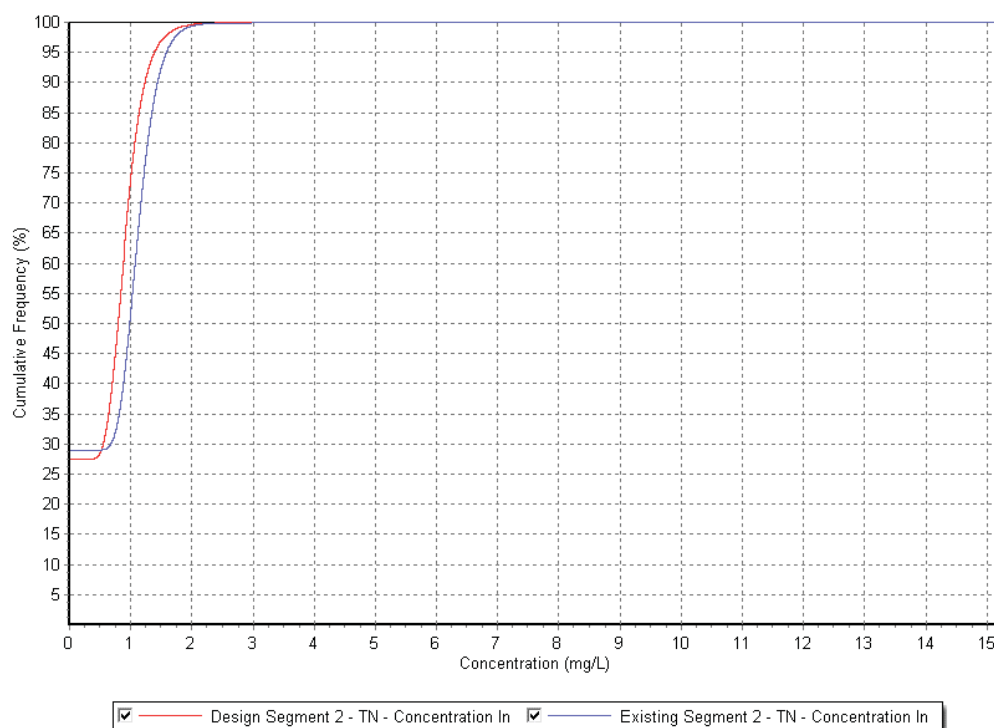


Figure J4: Cumulative Frequency Plots of TN for pre development (existing) and post development (operation) with treatment for Segment 2 of Oldbury Creek preferred and alternate options

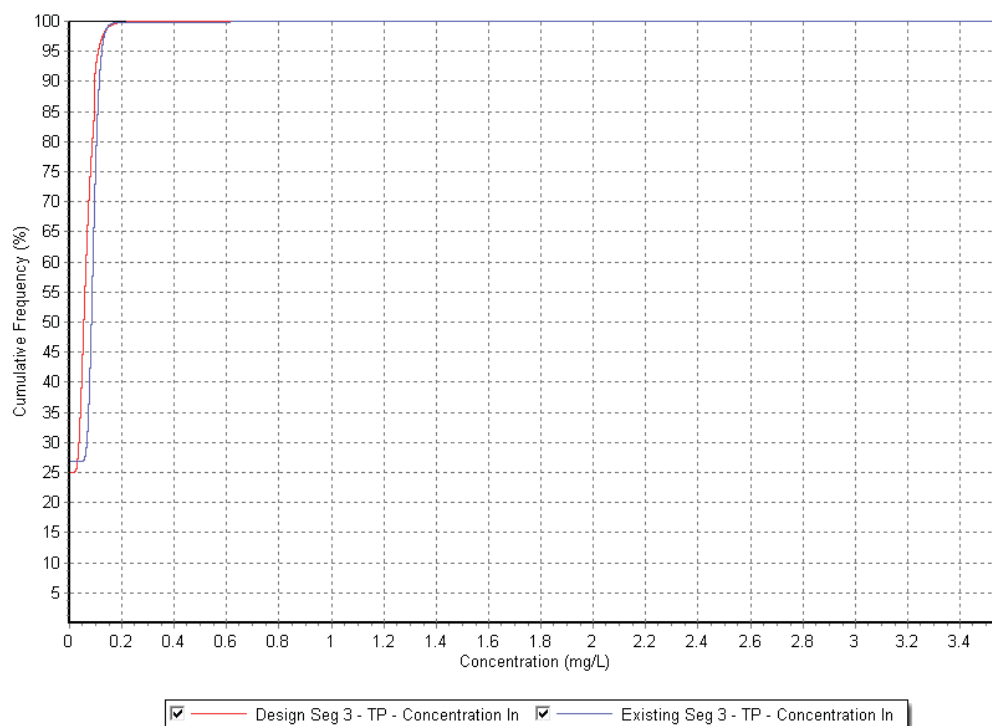


Figure J5: Cumulative Frequency Plots of TP for pre development (existing) and post development (operation) with treatment for Segment 3 of Oldbury Creek preferred and alternate options

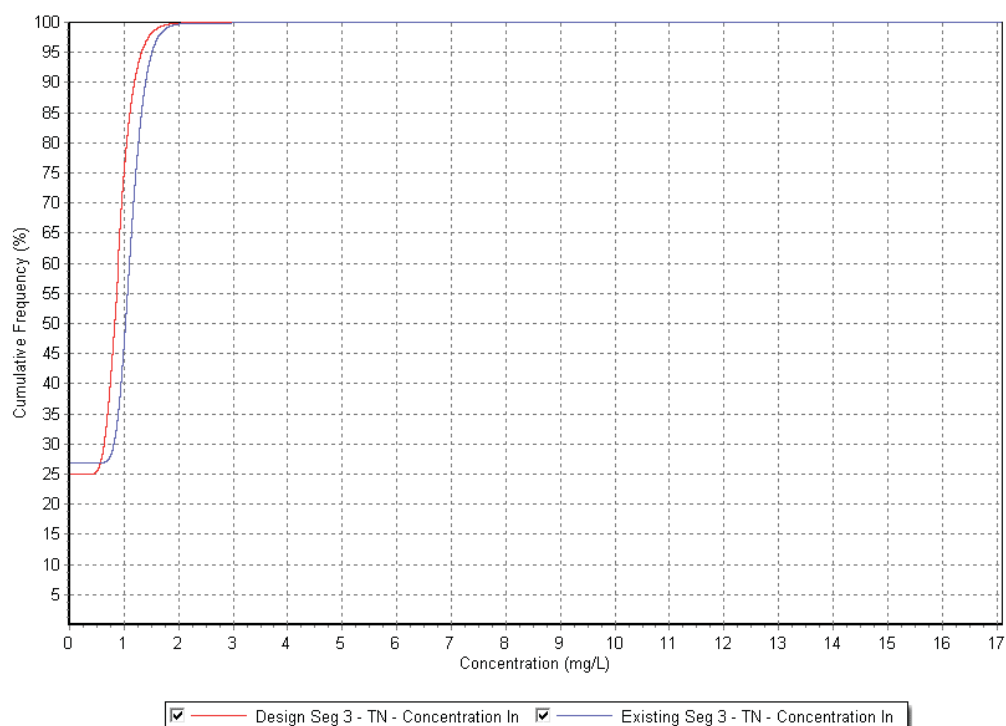


Figure J6: Cumulative Frequency Plots of TN for pre development (existing) and post development (operation) with treatment for Segment 3 of Oldbury Creek preferred and alternate options



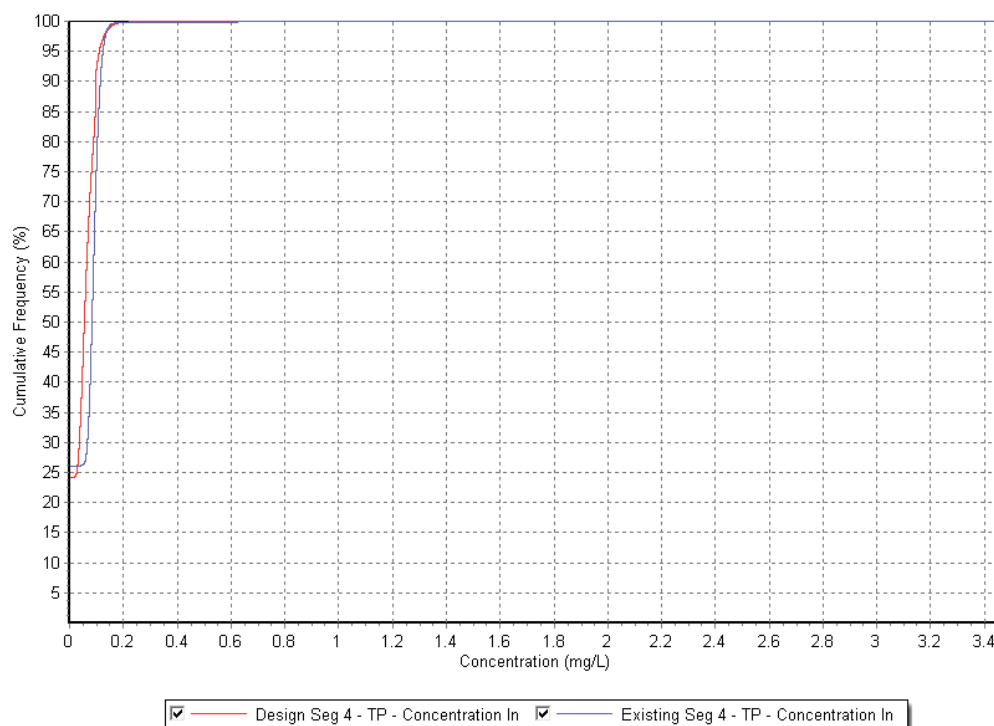


Figure J7: Cumulative Frequency Plots of TP for pre development (existing) and post development (operation) with treatment for Segment 4 of Oldbury Creek preferred and alternate options

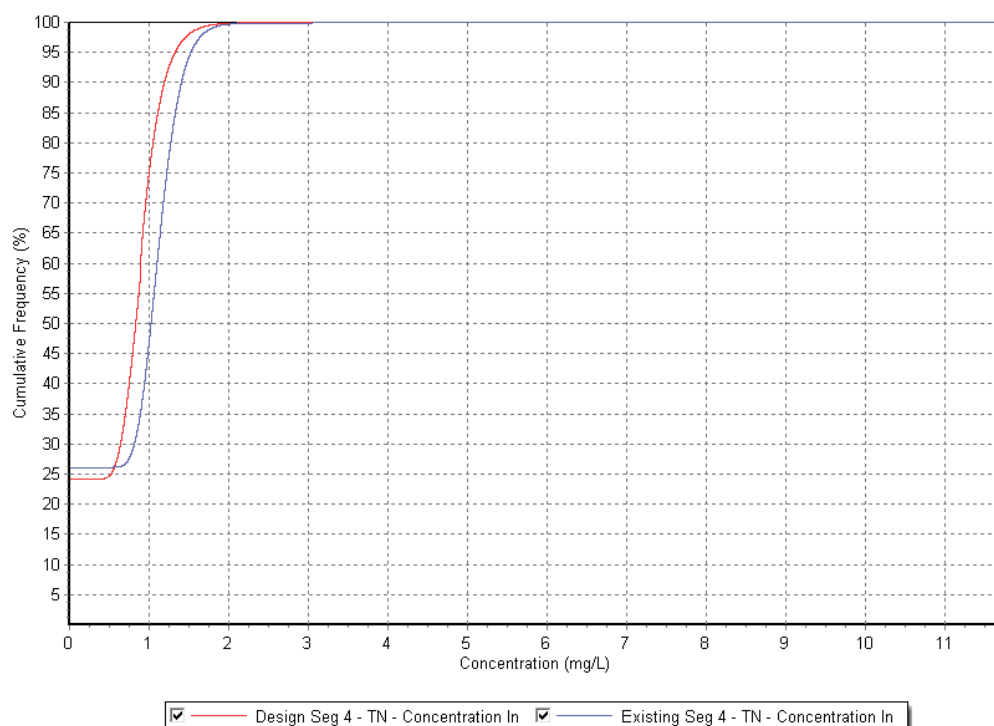


Figure J8: Cumulative Frequency Plots of TN for pre development (existing) and post development (operation) with treatment for Segment 4 of Oldbury Creek preferred and alternate options

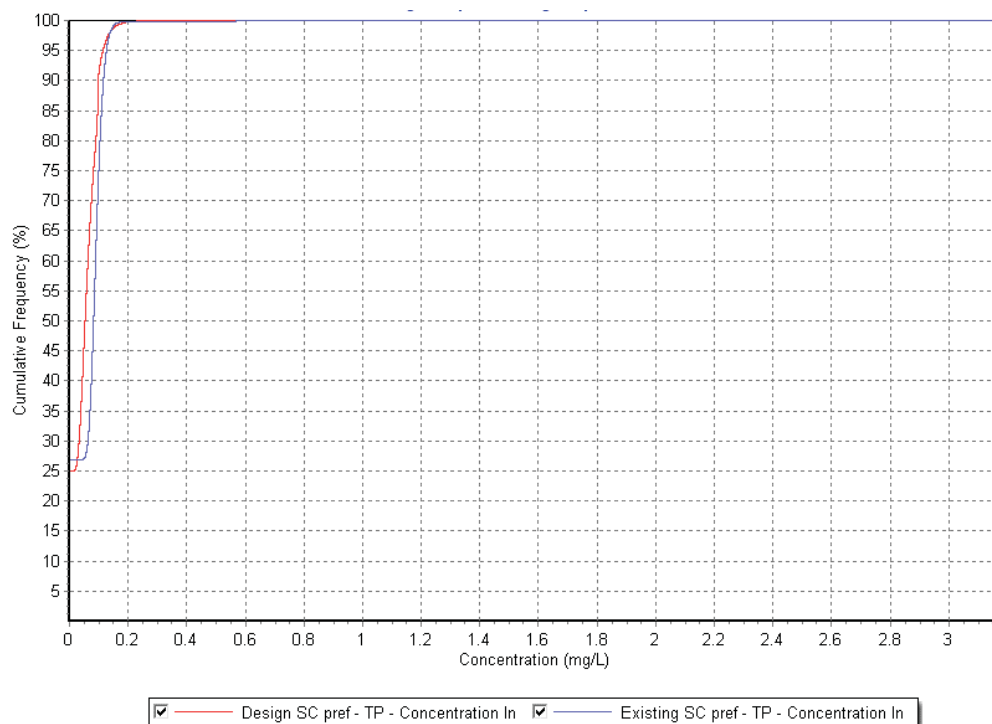


Figure J9: Cumulative Frequency Plots of TP for pre development (existing) and post development (operation) with treatment for Stony Creek preferred option

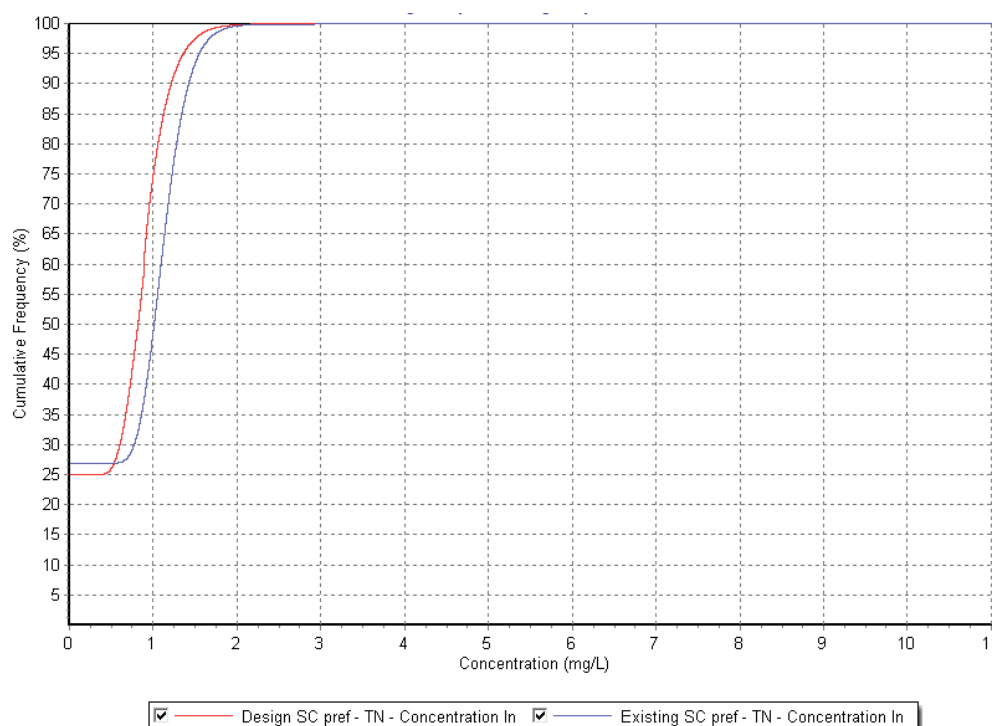


Figure J10: Cumulative Frequency Plots of TN for pre development (existing) and post development (operation) with treatment for Stony Creek preferred option



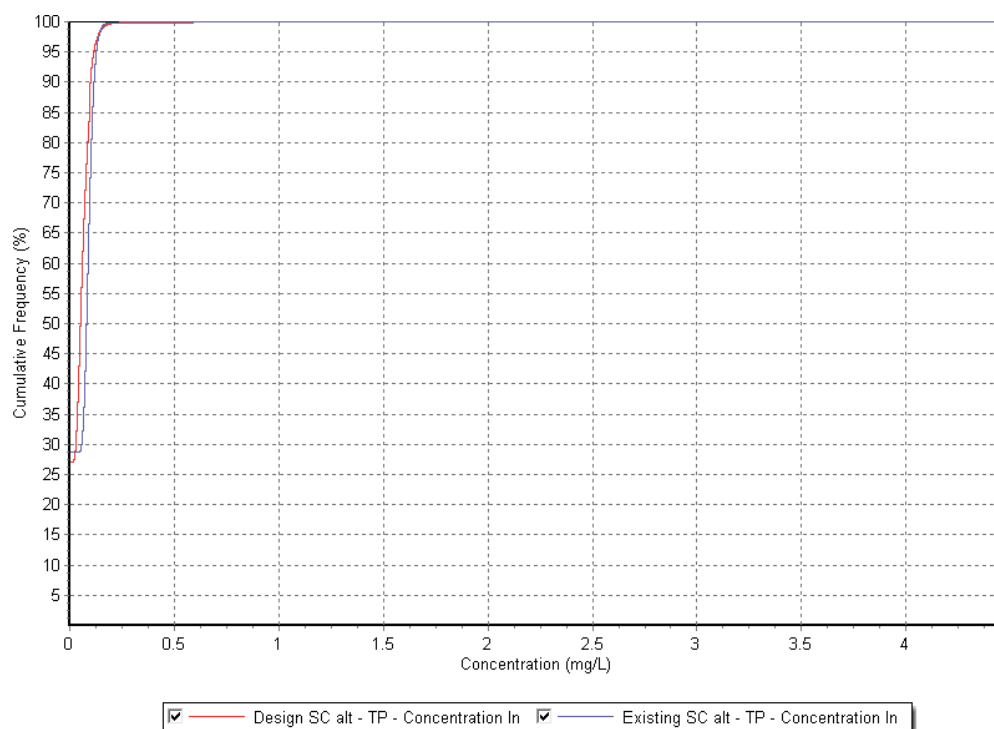


Figure J11: Cumulative Frequency Plots of TP for pre development (existing) and post development (operation) with treatment for Stony Creek alternate option

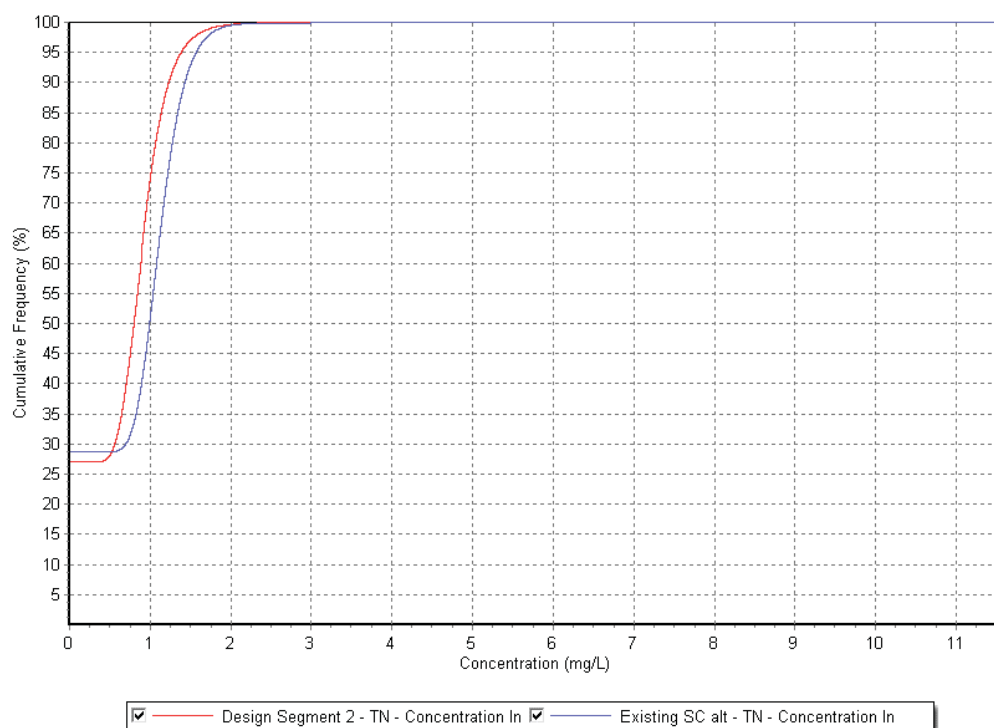


Figure J12: Cumulative Frequency Plots of TN for pre development (existing) and post development (operation) with treatment for Stony Creek alternate option

