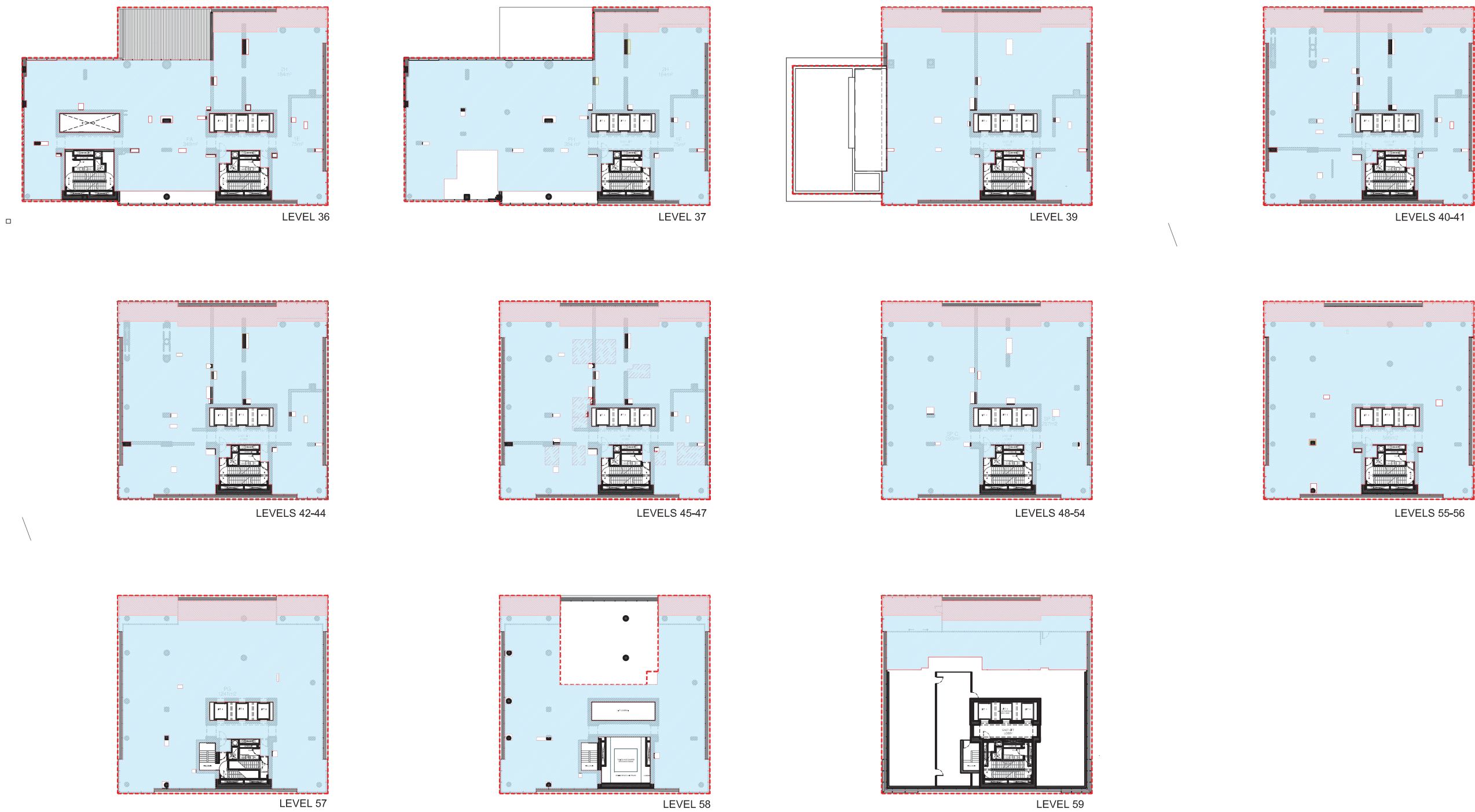


Appendix C: GFA Area Plans Tower A (Kerry Hill Architects)



Appendix C: GFA Area Plans
Tower A (Kerry Hill Architects)



Appendix C:

GFA Area Schedule - Tower A (Kerry Hill Architects)

LEVEL	SLEP 2012 Gross Floor Area (GFA) sqm		Balconies (Non GFA)	GBA
	Retail	Residential		
59 Roof Plant		237.57		712
58		441.19		566
57		592.59		712
56		599.56		712
55		599.56		712
54		595.99		712
53		595.99		712
52		595.99		712
51		595.99		712
50		595.99		712
49		595.99		712
48		595.99		712
47		592.77		712
46		592.77		712
45		592.77		712
44		593.10		712
43		593.10		712
42		593.10		712
41		592.51		712
40		592.51		712
39 Roof Terrace		594.48	204	908
38		698.08	18	866
37		687.01	18	866
36		663.23	90	946
35		754.01	17	947
34		754.01	17	947
33		754.01	17	947
32		750.61	17	947
31		750.61	17	947
30		750.61	17	947
29		750.61	17	947
28		750.61	17	947
27		750.61	17	947
26		750.61	17	947
25		750.61	17	947
24		750.61	17	947
23		750.61	17	947
22		750.61	17	947
21		750.61	17	947
20		752.84	17	947
19		752.84	17	947
18		752.84	17	947
17		752.84	17	947
16		752.84	17	947
15		752.84	17	947
14		752.61	17	947
13		752.61	17	947
12		752.61	17	947
11		774.04		947
10		774.04		947
9		774.04		947
8		774.04		947
7		758.16		928
6 TRANSFER		271.26		947
5		435.53		627
4		435.53		627
3		435.53		627
2		441.00		627
1				660
0 Ground	111.56	233.15		929
Ground -1	310.07			896
Total	421.63	38178.37	738	51064

SLEP 2012 GROSS FLOOR AREA - Tower A	
GFA Residential	38178.37 sqm
GFA Retail	421.63 sqm
Total GFA:	38600.00 sqm
Total Balconies (Non GFA):	738 sqm
Total GBA:	51064 sqm

COMMENTS

- 1) All measurements according to SLEP 2012 Gross Floor Area: Gross floor area (GFA) means the sum of the floor area of each floor of a building measured from the internal face of external walls, or from the internal face of walls separating the building from any other building, measured at a height of 1.4 metres above the floor, and includes:
- a- the area of a mezzanine, and
 - b- habitable rooms in a basement or an attic, and
 - c- any shop, auditorium, cinema, and the like, in a basement or attic,
- but excludes:
- d- any area for common vertical circulation, such as lifts and stairs, and
 - e- any basement:
 - i- storage, and
 - ii- vehicular access, loading areas, garbage and services, and
 - f- plant rooms, lift towers and other areas used exclusively for mechanical services or ducting, and(g) car parking to meet any requirements of the consent authority (including access to that car parking), and
 - h- any space used for the loading or unloading of goods (including access to it), and
 - i- terraces and balconies with outer walls less than 1.4 metres high, and
 - j- voids above a floor at the level of a storey or storey above.
- 2) The revised total building height is 194m (RL200).
- 3) GBA (Gross Building Area) is measured to the outside face of the building outline with deletions for voids in excess of 1m2 other than service risers and lift shafts which are not deducted. Covered outside areas and balconies are included in the GBA and Level 39 Terrace ha been included in the GBA for Level 39.

Appendix C: GFA Area Plans
Tower B (Proposed Stage 2DA)

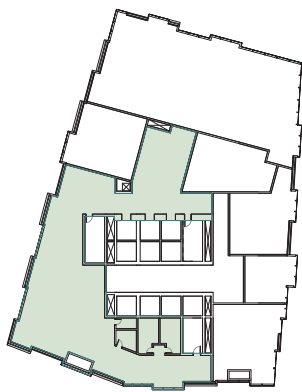


Key

Non GFA
Retail
Hotel

Appendix C: GFA Area Plans

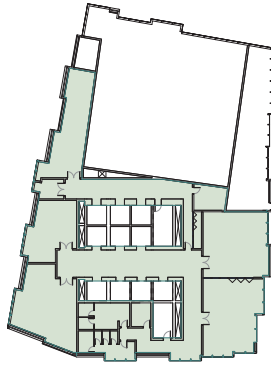
Tower B (Proposed Stage 2DA)



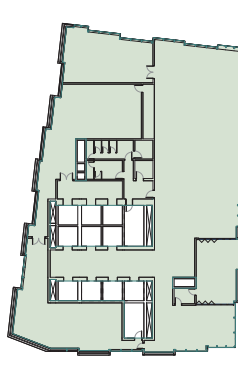
1 LEVEL 02 - EXECUTIVE OFFICE
SCALE 1 : 400



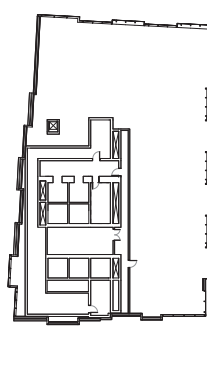
2 LEVEL 03 - GRAND BALLROOM
SCALE 1 : 400



3 LEVEL 03 MEZZANINE - MEETING ROOM
SCALE 1 : 400



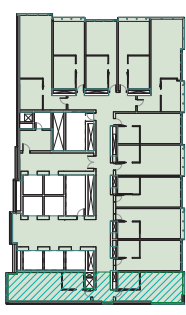
4 LEVEL 04 - ALL DAY DINING
SCALE 1 : 400



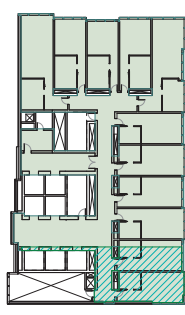
5 LEVEL 05 - PLANT
SCALE 1 : 400



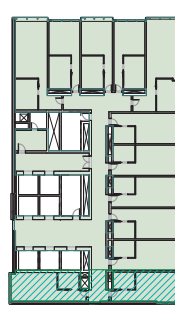
6 LEVEL 06 - HOTEL STANDARD
SCALE 1 : 400



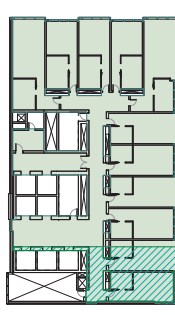
7 LEVEL 07 - HOTEL STANDARD
SCALE 1 : 400



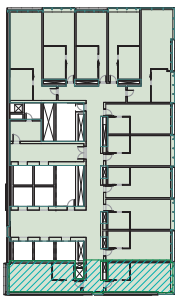
8 LEVEL 08 - HOTEL STANDARD
SCALE 1 : 400



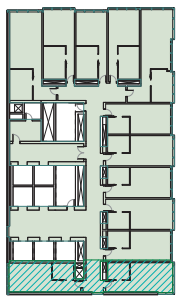
9 LEVEL 09 - HOTEL STANDARD
SCALE 1 : 400



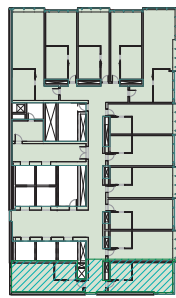
10 LEVEL 10 - HOTEL STANDARD
SCALE 1 : 400



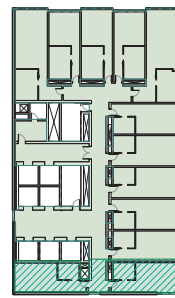
11 LEVEL 11 - HOTEL STANDARD
SCALE 1 : 400



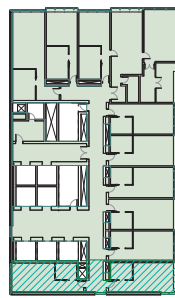
12 LEVEL 12 - HOTEL STANDARD
SCALE 1 : 400



13 LEVEL 13 - HOTEL STANDARD
SCALE 1 : 400



14 LEVEL 14 - HOTEL STANDARD
SCALE 1 : 400



15 LEVEL 15 - HOTEL SUITE
SCALE 1 : 400

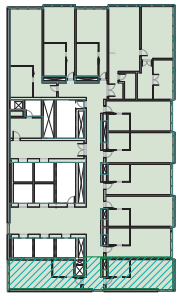
Key

Non GFA

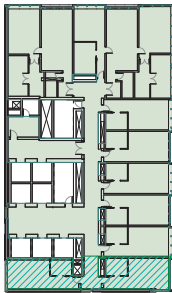
Retail

Hotel

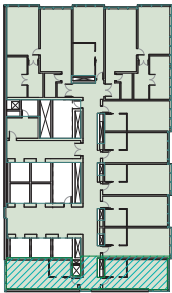
Appendix C: GFA Area Plans Tower B (Proposed Stage 2DA)



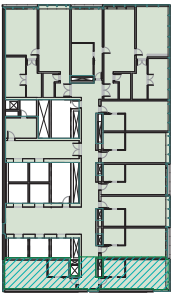
10 LEVEL 16 - HOTEL SUITE
1802 SCALE 1 : 400



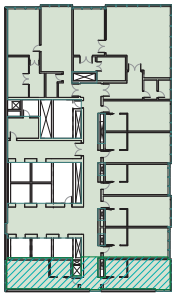
9 LEVEL 17 - HOTEL SUITE
1802 SCALE 1 : 400



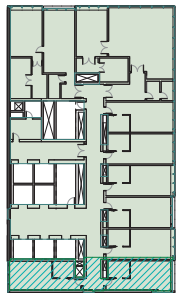
8 LEVEL 18 - HOTEL SUITES
1802 SCALE 1 : 400



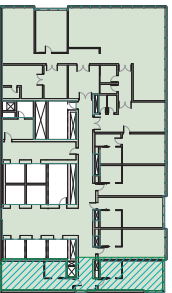
7 LEVEL 19 - HOTEL SUITES
1802 SCALE 1 : 400



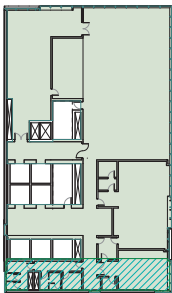
6 LEVEL 20 - HOTEL PREMIER SUITES
1802 SCALE 1 : 400



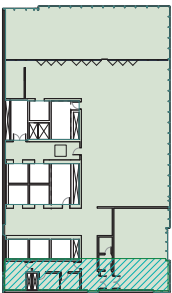
5 LEVEL 21 - HOTEL PREMIER SUITES
1802 SCALE 1 : 400



4 LEVEL 22 - HOTEL PRESIDENTIAL SUITE
1802 SCALE 1 : 400



3 LEVEL 23 - CLUB RESTAURANT
1802 SCALE 1 : 400



2 LEVEL 24 - CLUB BAR
1802 SCALE 1 : 400



1 LEVEL 25 - CLUB ROOFTOP BAR
1802 SCALE 1 : 400

Key

Non GFA

Retail

Hotel

Appendix C:

GFA Area Schedule (Proposed Stage 2DA)

Area Schedule based on Indicative Scheme

1. GFA (Gross Floor Area) measured according to SLEP 2012:

Gross Floor Area means the sum of the floor area of each floor of a building measured from the internal face of external walls, or from the internal face of walls separating the building from any other building, measured at a height of 1.4 metres above the floor, and includes:

- (a) the area of a mezzanine, and
- (b) habitable rooms in a basement or an attic, and
- (c) any shop, auditorium, cinema, and the like, in a basement or attic, but excludes:
- (d) any area for common vertical circulation, such as lifts and stairs, and
- (e) any basement:
- (i) storage, and
- (ii) vehicular access, loading areas, garbage and services, and
- (f) plant rooms, lift towers and other areas used exclusively for mechanical services or ducting, and
- (g) car parking to meet any requirements of the consent authority (including access to that car parking), and
- (h) any space used for the loading or unloading of goods (including access to it), and
- (i) terraces and balconies with outer walls less than 1.4 metres high, and
- (j) voids above a floor at the level of a storey or storey above.

2. The Indicative Scheme Area Schedule include the Design Excellence 10% additional floor space.

Refer to GFA Area Plans - Tower B (Indcative Scheme) for details.

LEVELS	USE	HOTEL GFA	RETAILN GFA
Roof			
LEVEL 25	BAT TERRACE & PLANT	114m²	
LEVEL 24	BAR & KTV	683m²	
LEVEL 23	CHINESE RESTAURANT	702m²	
LEVEL 22	HOTEL PRESIDENTIAL	685m²	
LEVEL 21	HOTEL PREMIER	679m²	
LEVEL 20	HOTEL PREMIER	678m²	
LEVEL 19	HOTEL SUITES	680m²	
LEVEL 18	HOTEL SUITES	680m²	
LEVEL 17	HOTEL SUITE	680m²	
LEVEL 16	HOTEL SUITE	682m²	
LEVEL 15	HOTEL SUITE	682m²	
LEVEL 14	HOTEL STANDARD KEYS	672m²	
LEVEL 13	HOTEL STANDARD KEYS	672m²	
LEVEL 12	HOTEL STANDARD KEYS	673m²	
LEVEL 11	HOTEL STANDARD KEYS	673m²	
LEVEL 10	HOTEL STANDARD KEYS	635m²	
LEVEL 9	HOTEL STANDARD KEYS	675m²	
LEVEL 8	HOTEL STANDARD KEYS	643m²	
LEVEL 7	HOTEL STANDARD KEYS	687m²	
LEVEL 6	HOTEL STANDARD KEYS	803m²	
LEVEL 5	PLANT	0m²	
TOWER		13,078m²	
LEVEL 4	ALL DAY DINING	957m²	
LEVEL 3 MEZANINE	MEETING ROOMS BOH	632m²	
LEVEL 3	GRAND BALLROOM KITCHEN	1,118m²	
LEVEL 2	EXECUTIVE OFFICE	431m²	
LEVEL 1	FITNESS CAFÉ & POOL + SPA	1,247m²	
GROUND MEZANINE	PLANT	44m²	
GROUND	HOTEL LOBBY RETAIL	610m²	336m²
PODIUM		5,039m²	336m²
ABOVE GROUND		18,117m²	336m²
BASEMENT 1	SHARED LOADING AREAS BOH MEP	48m²	
BASEMENT 2	HOTEL CARPARK VIP DROP OFF	68m²	
BASEMENT 3	HOTEL CARPARK BOH	550m²	
BASEMENT 4	RESIDENTIAL CARPARK	0m²	
BASEMENT 5	RESIDENTIAL CARPARK	0m²	
BASEMENT 6	RESIDENTIAL CARPARK	0m²	
BASEMENT		666m²	
TOTAL		18,783m²	336m²
		HOTEL GFA	RETAIL GFA
WANDA SYDNEY PROJECT - TOWER B	INCLUDES: HOTEL, RETAIL	19,119m²	

Key

Non GFA

Retail

Hotel