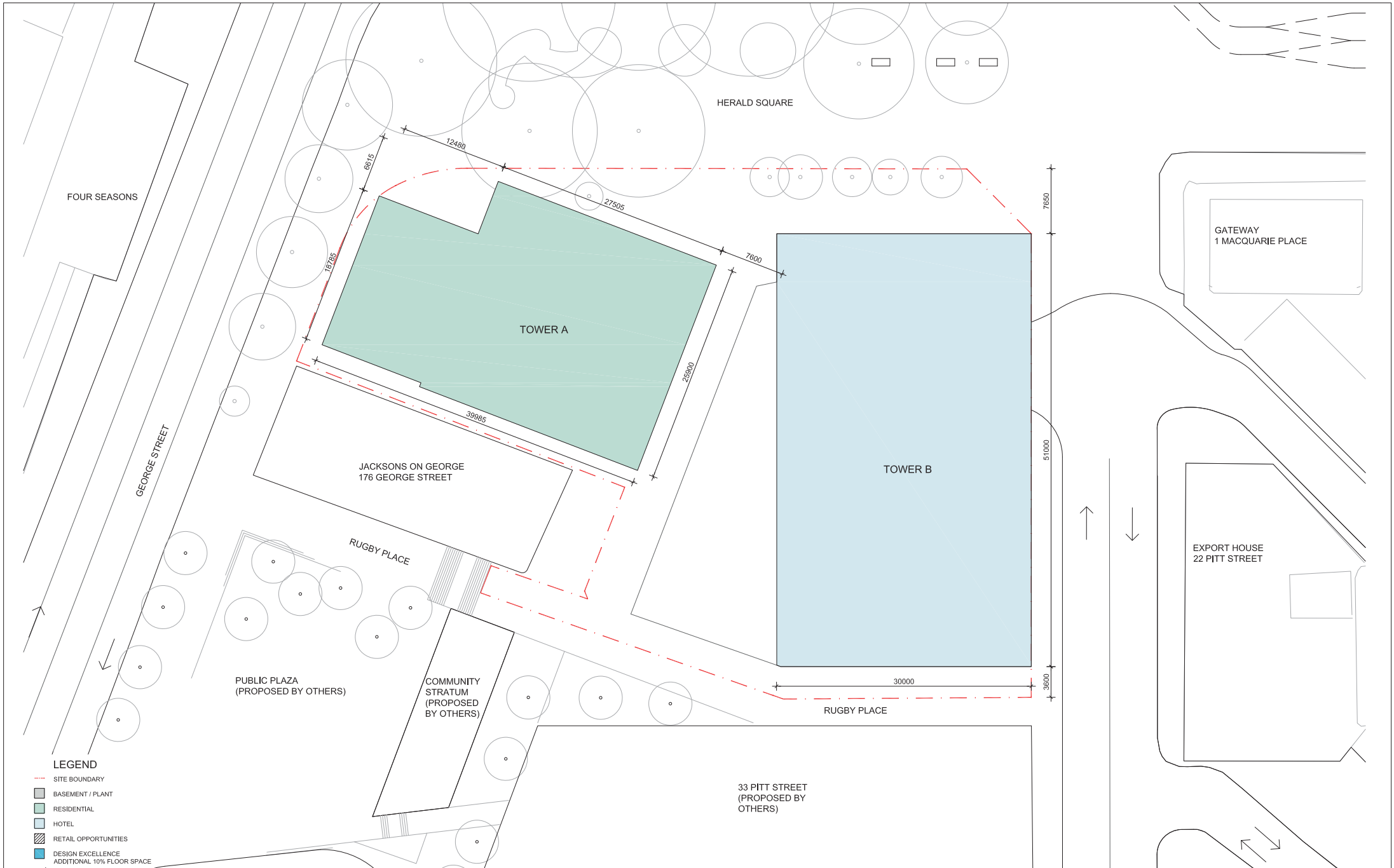
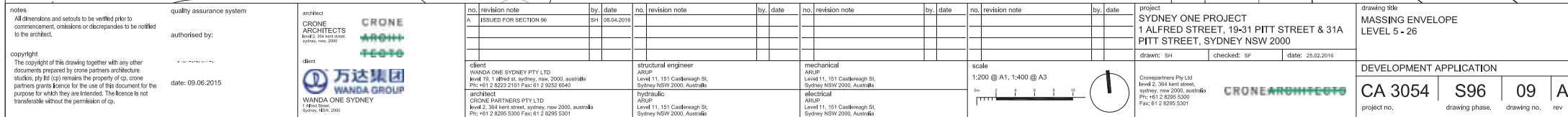
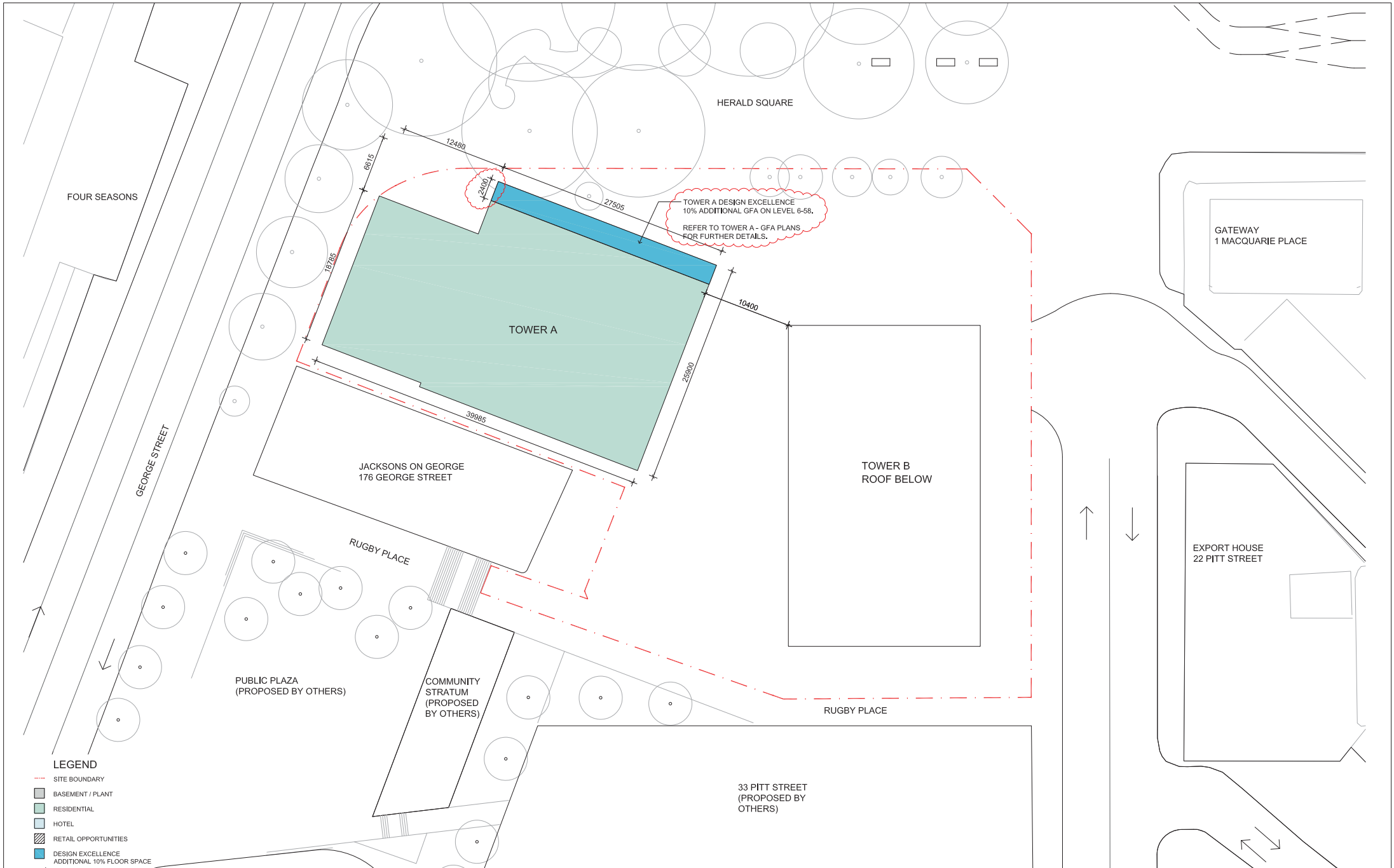





notes All dimensions and setbacks to be verified prior to commencement, omissions or discrepancies to be notified to the architect.		quality assurance system authorised by:		architect CRONE ARCHITECTS Level 2, 364 Kent Street, Sydney, NSW 2000		client 万达集团 WANDA GROUP WANDA ONE SYDNEY 1 Alfred Street, Sydney, NSW 2000		no. revision note by. date A ISSUED FOR SECTION 96 SH 08.04.2016		no. revision note by. date		no. revision note by. date		no. revision note by. date		project SYDNEY ONE PROJECT 1 ALFRED STREET, 19-31 PITT STREET & 31A PITT STREET, SYDNEY NSW 2000		drawing title MASSING ENVELOPE LEVEL 3	
copyright The copyright of this drawing together with any other documents prepared by crone partners architecture studios, pty ltd (cp) remains the property of cp. crone partners grants licence for the use of this document for the purpose for which they are intended. The licence is not transferable without the permission of cp.		date: 09.06.2015		client 万达集团 WANDA GROUP WANDA ONE SYDNEY 1 Alfred Street, Sydney, NSW 2000		client WANDA ONE SYDNEY PTY LTD Level 19, 1 Alfred St, Sydney, NSW, 2000, Australia P/O: +61 2 8223 2101 Fax: 61 2 8252 6540		structural engineer ARUP Level 11, 151 Castlereagh St, Sydney NSW 2000, Australia		mechanical ARUP Level 11, 151 Castlereagh St, Sydney NSW 2000, Australia		electrical ARUP Level 11, 151 Castlereagh St, Sydney NSW 2000, Australia		scale 1:200 @ A1, 1:400 @ A3 		drawn: SH checked: SF date: 25.02.2016		development application CA 3054 S96 07 A	
																		project no. drawing phase. drawing no. rev	



<div>notes</div> <div>The copyright of this drawing together with any other documents prepared by crone partners architecture studios, pty ltd (cp) remains the property of cp. crone partners grants licence for the use of this document for the purpose for which they are intended. The licence is not transferable without the permission of cp.</div>		<div>quality assurance system</div> <div>authorised by:</div> <div>date: 09.06.2015</div>		<div>architect</div> <div>CRONE ARCHITECTS</div> <div>Level 2, 364 Kent Street, Sydney, NSW 2000</div> <div>client</div> <div>万达集团 WANDA GROUP</div> <div>WANDA ONE SYDNEY</div> <div>1 Alfred Street, Sydney, NSW 2000</div>		<div>no. revision note</div> <div>by. date</div> <div>SH 08.04.2016</div> <div>no. revision note</div> <div>by. date</div> <div>no. revision note</div> <div>by. date</div> <div>no. revision note</div> <div>by. date</div> <div>no. revision note</div> <div>by. date</div>		<div>project</div> <div>SYDNEY ONE PROJECT</div> <div>1 ALFRED STREET, 19-31 PITT STREET & 31A PITT STREET, SYDNEY NSW 2000</div> <div>drawn: SH checked: SF date: 25.02.2016</div>		<div>drawing title</div> <div>MASSING ENVELOPE LEVEL 4</div> <div>DEVELOPMENT APPLICATION</div>		<div>scale</div> <div>1:200 @ A1, 1:400 @ A3</div> <div>0m 2 4 6 8 10</div>		<div>structural engineer</div> <div>ARUP</div> <div>Level 11, 151 Castlereagh St, Sydney NSW 2000, Australia</div> <div>mechanical</div> <div>ARUP</div> <div>Level 11, 151 Castlereagh St, Sydney NSW 2000, Australia</div> <div>electrical</div> <div>ARUP</div> <div>Level 11, 151 Castlereagh St, Sydney NSW 2000, Australia</div> <div>hydraulic</div> <div>ARUP</div> <div>Level 11, 151 Castlereagh St, Sydney NSW 2000, Australia</div>		<div>crone partners pty ltd</div> <div>Level 2, 364 Kent Street, Sydney, NSW 2000, Australia</div> <div>Pic +61 2 8295 5300 Fax 61 2 8295 5301</div> <div>crone partners pty ltd</div> <div>Level 2, 364 Kent Street, Sydney, NSW 2000, Australia</div> <div>Pic +61 2 8295 5300 Fax 61 2 8295 5301</div>		<div>project no.</div> <div>CA 3054</div> <div>drawing phase.</div> <div>S96</div> <div>drawing no.</div> <div>08</div> <div>rev</div> <div>A</div>	
---	--	---	--	---	--	---	--	---	--	---	--	---	--	---	--	---	--	---	--





notes		quality assurance system		architect		no. revision note		by. date		no. revision note		by. date		no. revision note		by. date		no. revision note		by. date		project			
All dimensions and setbacks to be verified prior to commencement, omissions or discrepancies to be notified to the architect.		authorised by:		CRONE ARCHITECTS Level 2, 364 Kent Street, Sydney, NSW 2000		A ISSUED FOR SECTION 96		SH 08.04.2016														SYDNEY ONE PROJECT 1 ALFRED STREET, 19-31 PITT STREET & 31A PITT STREET, SYDNEY NSW 2000			
copyright				client																		drawn: SH checked: SF date: 25.02.2016			
The copyright of this drawing together with any other documents prepared by crone partners architecture studios, pty ltd (cp) remains the property of cp. crone partners grants licence for the use of this document for the purpose for which they are intended. No licence is not transferable without the permission of cp.		date: 09.06.2015		 WANDA ONE SYDNEY 1 Alfred Street, Sydney, NSW 2000		client WANDA ONE SYDNEY PTY LTD Level 15, 1 Alfred St, Sydney, NSW 2000, Australia Pty +61 2 6232 1101 Fax 61 2 9252 6540		structural engineer ARUP Level 11, 151 Castlereagh St, Sydney NSW 2000, Australia Pty +61 2 6232 1101 Fax 61 2 9252 6540		mechanical ARUP Level 11, 151 Castlereagh St, Sydney NSW 2000, Australia Pty +61 2 6232 1101 Fax 61 2 9252 6540		scale 1:200 @ A1, 1:400 @ A3				electrical ARUP Level 11, 151 Castlereagh St, Sydney NSW 2000, Australia Pty +61 2 6232 1101 Fax 61 2 9252 6540		architect ARUP Level 11, 151 Castlereagh St, Sydney NSW 2000, Australia Pty +61 2 6232 1101 Fax 61 2 9252 6540		cronepartners Pty Ltd Level 2, 364 Kent Street, Sydney, NSW 2000, Australia Pty +61 2 6236 5300 Fax 61 2 6235 5301				DRAWING TITLE MASSING ENVELOPE LEVEL 27 - 38	
DEVELOPMENT APPLICATION																									
CA 3054 S96 10 A																									
project no. drawing phase. drawing no. rev																									