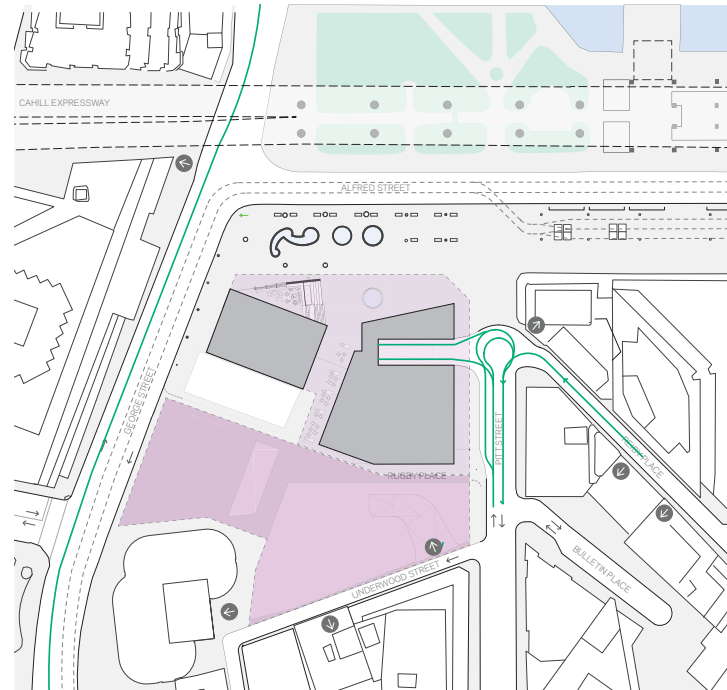


The Ground Plane

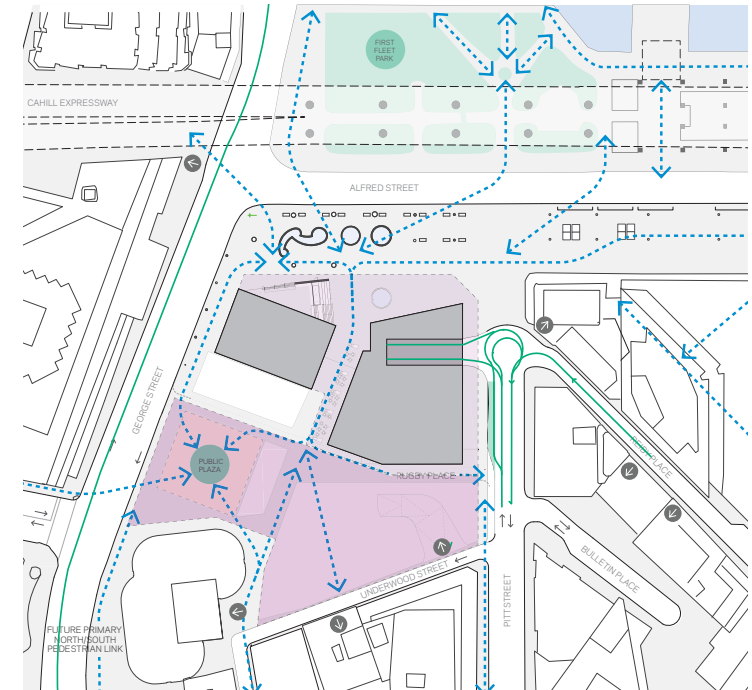
Vehicular & Pedestrian Networks

Bringing life into the streets

The renewed APDG block will inspire and link together existing and new forms of public transport, providing the gateway to and from the north. It will establish connectivity across the city core primarily from north, south and will promote a better quality public realm. Connected by vibrant laneways, the precinct will offer greater opportunities for outdoor dining, sitting and shopping. The ground and first floor levels of both proposed new buildings are activated with a mixture of boutique retail, café/bars and a registered club uses. The development is committed to addressing both the existing Herald Square and the proposed public square south of the development, limiting the extent of passive facade at ground and avoiding a publicly visible back of house for the hotel development.



Vehicular Network



Pedestrian Network

Key

	33-35 Pitt Proposed Basement Extents
	Proposed Basement Extents
	Future Bicycle Facilities
	Drop-Off Zone
	Vehicular Access
	Pedestrian Network

The Ground Plane

Urban Design & Public Art

Urban Design Objectives

The public plaza and through-site link are intended to be landscaped in order to encourage pedestrian utilisation, enabling development of frontages as one of the major focal points for Circular Quay, maintaining its current status as a celebratory public space.

The ground plane strategy supports a series of active programs at ground which enhance connections with Herald Square and encourage visitations by anyone from international tourists to local commuters. Through façade design relief will be articulated to encourage pedestrians to approach and use local amenities.

Public Art Strategy

The proposed development is committed to incorporating high quality public art. It will compliment the design excellence target in the architectural and urban landscape design. The artworks aim to be used as an instrument for place making, producing attractions for public visitation to match the high profile of this landmark site location.



Black Slide Mantra, Japan - Isamu Noguchi



Serpentine Gallery Pavilion - Sou Fujimoto



Open space in Hafencity, Hamburg Germany - EMBT



Fantasia mixed-use landscape - EDAW/AECOM

The Ground Plane
Artist's Impression



Sydney One Public Domain — Indicative Scheme (Herald Square view looking south)

The Ground Plane
Artist's Impression



Sydney One Public Domain — Indicative Scheme (Rugby Place view looking west)

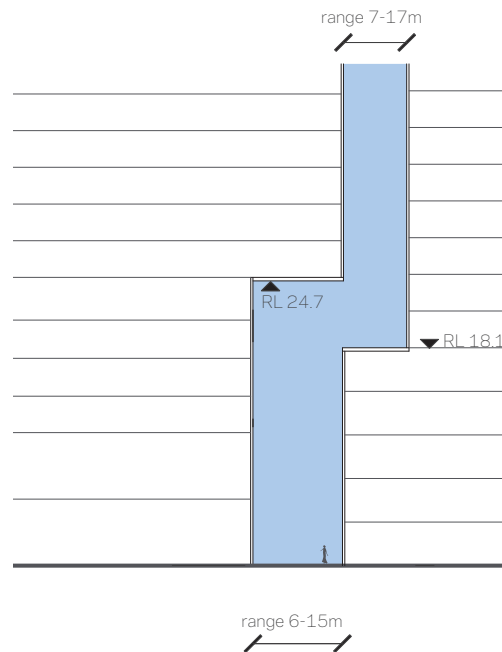
The Ground Plane

Daylight Access

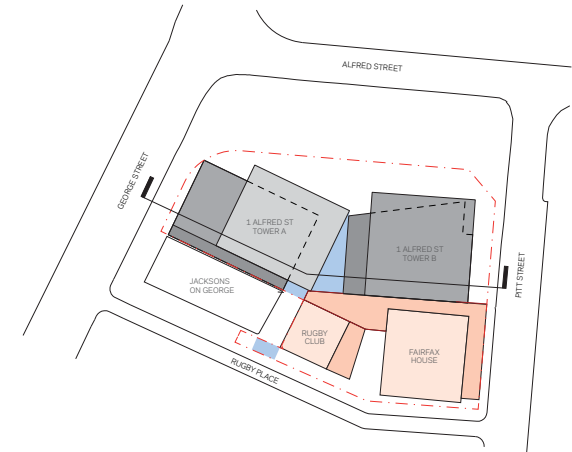
Approved DA



Approved DA Perspective (courtesy of Kerry Hill Architects)

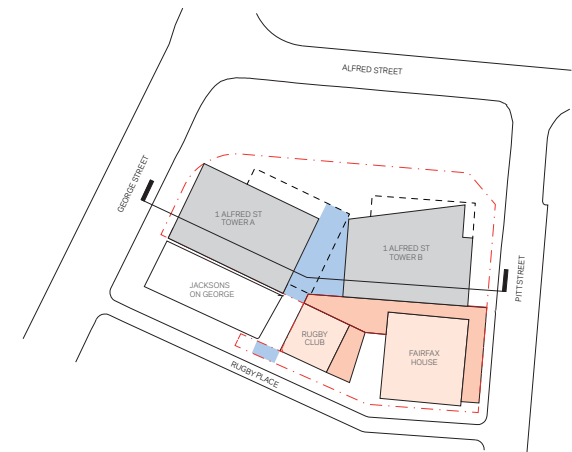


Approved DA Elevation



Approved DA Plan - Roof Plan

129m² open to sky



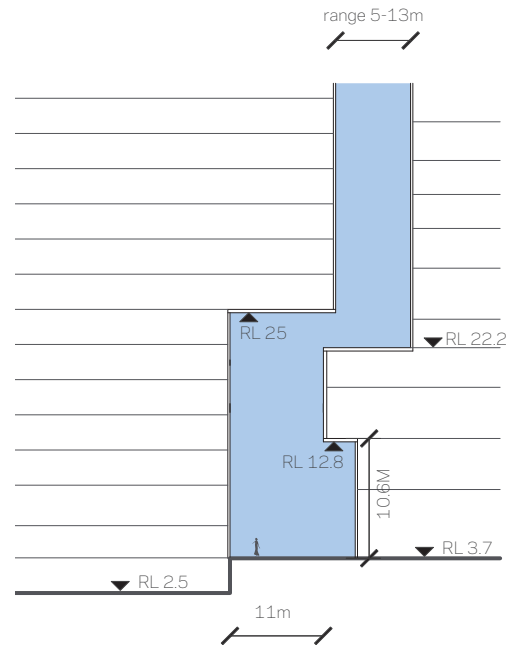
Approved DA Plan - Ground Floor

The Ground Plane Daylight Access

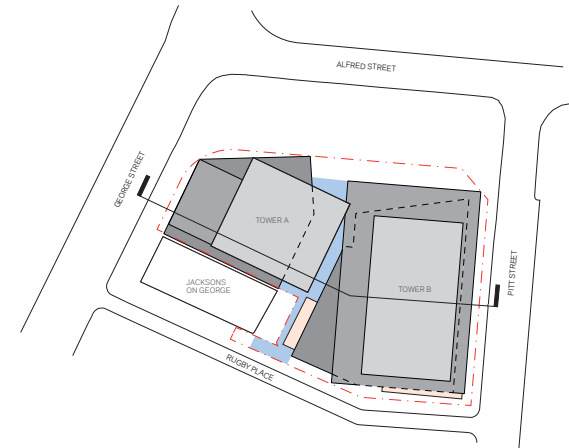
Proposed Envelope



Proposed Envelope Perspective (courtesy of Kerry Hill Architects)

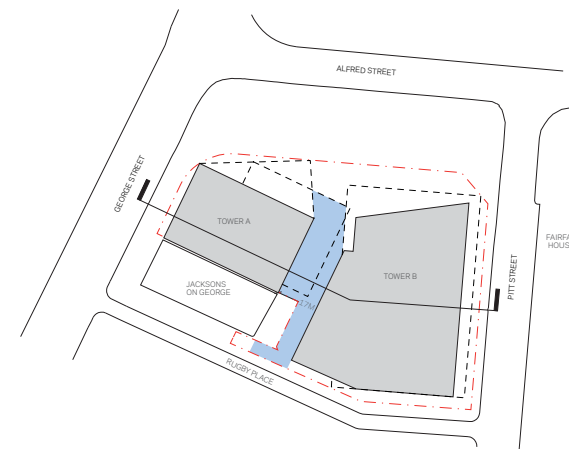


Proposed Envelope Elevation



Proposed Envelope Plan - Roof Plan

233m² open to sky



Proposed Envelope Plan - Ground Floor

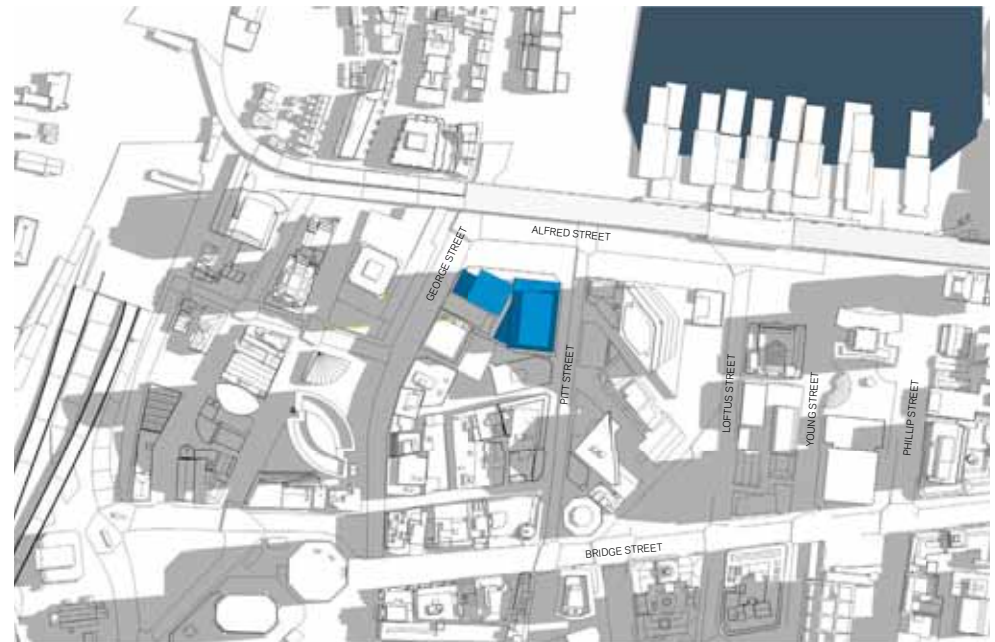
05 — Shadow Analysis



Shadow Analysis

Impact on Context

Proposed Envelope
Summer Solstice - 21 December



9am

Key

- Existing Context & Approved DA Envelope Shadow
- Proposed Envelope Shadow
- Rooftops affected by Proposed Envelope
- Street Level affected by Proposed Envelope
- Macquarie Place Extents

Shadow Analysis

Impact on Context

Proposed Envelope
Summer Solstice - 21 December



10am



11am

Key

- Existing Context & Approved DA Envelope Shadow
- Proposed Envelope Shadow
- Rooftops affected by Proposed Envelope
- Street Level affected by Proposed Envelope
- Macquarie Place Extents

Shadow Analysis Impact on Context

Proposed Envelope
Summer Solstice - 21 December



12pm



1pm

Key

- Existing Context & Approved DA Envelope Shadow
- Proposed Envelope Shadow
- Rooftops affected by Proposed Envelope
- Street Level affected by Proposed Envelope
- Macquarie Place Extents

Shadow Analysis

Impact on Context

Proposed Envelope
Summer Solstice - 21 December



2pm



3pm

Key

- Existing Context & Approved DA Envelope Shadow
- Proposed Envelope Shadow
- Rooftops affected by Proposed Envelope
- Street Level affected by Proposed Envelope
- Macquarie Place Extents

Shadow Analysis Impact on Context

Proposed Envelope
Winter Solstice - 21 June



9am

Key

- Existing Context & Approved DA Envelope Shadow
- Proposed Envelope Shadow
- Rooftops affected by Proposed Envelope
- Street Level affected by Proposed Envelope
- Macquarie Place Extents

Shadow Analysis Impact on Context

Proposed Envelope
Winter Solstice - 21 June



10am



11am

Key

- Existing Context & Approved DA Envelope Shadow
- Proposed Envelope Shadow
- Rooftops affected by Proposed Envelope
- Street Level affected by Proposed Envelope
- Macquarie Place Extents

Shadow Analysis

Impact on Context

Proposed Envelope
Winter Solstice - 21 June



12pm



1pm

Key

- Existing Context & Approved DA Envelope Shadow
- Proposed Envelope Shadow
- Rooftops affected by Proposed Envelope
- Street Level affected by Proposed Envelope
- Macquarie Place Extents

Shadow Analysis Impact on Context

Proposed Envelope
Winter Solstice - 21 June



2pm



3pm

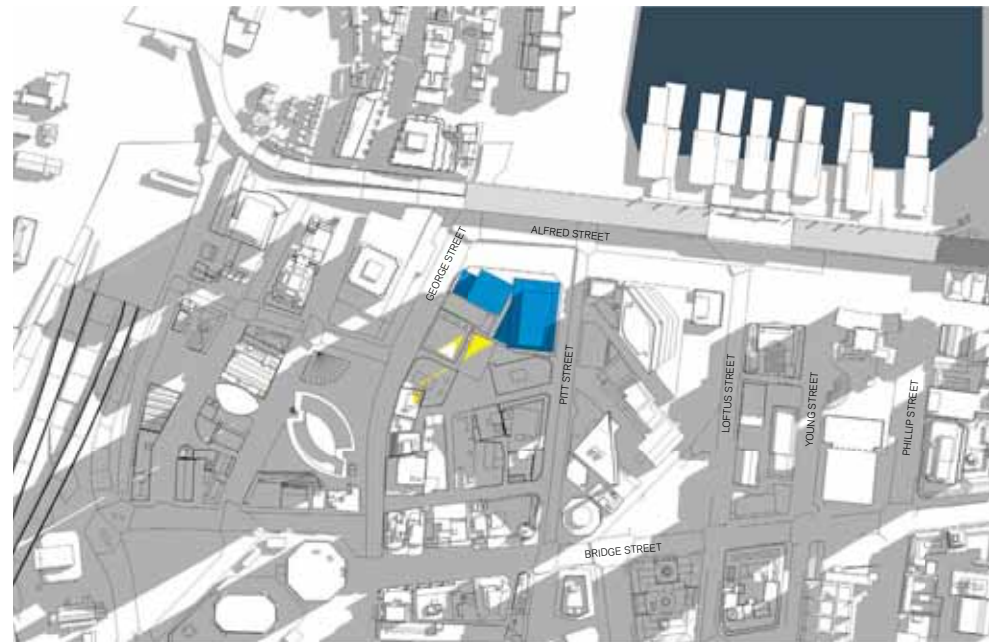
Key

- Existing Context & Approved DA Envelope Shadow
- Proposed Envelope Shadow
- Rooftops affected by Proposed Envelope
- Street Level affected by Proposed Envelope
- Macquarie Place Extents

Shadow Analysis





Impact on Context

Proposed Envelope
Equinox - 21 March/ 23 Sept



9am

Key

	Existing Context & Approved DA Envelope Shadow
	Proposed Envelope Shadow
	Rooftops affected by Proposed Envelope
	Street Level affected by Proposed Envelope

Shadow Analysis

Impact on Context

Proposed Envelope
Equinox - 21 March/ 23 Sept



10am



11am

Key

- Existing Context & Approved DA Envelope Shadow
- Proposed Envelope Shadow
- Rooftops affected by Proposed Envelope
- Street Level affected by Proposed Envelope